

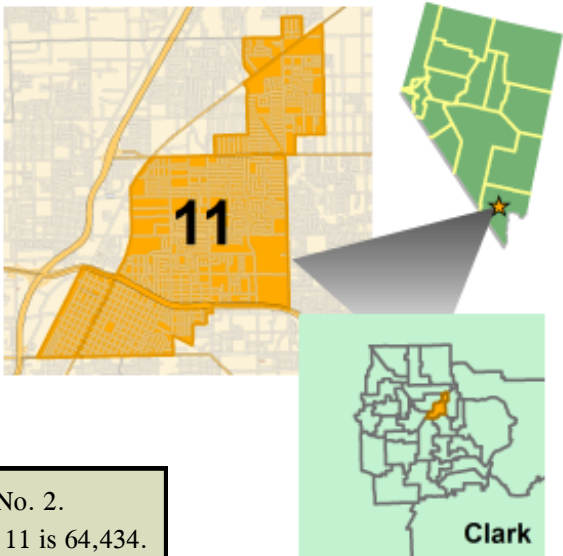
Demographic Profile of Nevada Assembly District No. 11* of the 77th Session (2013)



Assemblywoman Olivia Diaz

Democrat

Olivia.Diaz@asm.state.nv.us
(702) 501-8994 (H)



Assembly District No. 11 is nested within Senate District No. 2.
Total population from the 2010 Census for Assembly District No. 11 is 64,434.

Race and Ethnicity**

Race/Ethnicity	Assembly District No. 11	Nevada
White	67.2%	73.5%
Black	11.0%	8.0%
AIAN	0.6%	1.1%
Asian	2.6%	7.1%
NHOPI	0.1%	0.6%
Some Other	16.3%	6.2%
Two or More	2.2%	3.6%
Hispanic or Latino	68.0%	26.1%

Household Income

Income	Assembly District No. 11	Nevada
< \$25,000	40.9%	19.5%
\$25,000-34,999	18.0%	10.6%
\$35,000-49,999	14.5%	14.3%
\$50,000-74,999	15.7%	20.6%
\$75,000-99,999	7.3%	13.7%
\$100,000-149,999	2.6%	13.4%
\$150,000-199,999	0.6%	4.3%
> \$199,999	0.3%	3.6%

Veteran Status

Veteran Type	Assembly District No. 11	Nevada
Gulf War 1990–2011	20.5%	22.3%
Other Wartime	50.2%	51.8%
Peacetime	29.4%	25.9%

Home Occupancy Status

Status	Assembly District No. 11	Nevada
Owner Occupied	30.7%	59.1%
Renter Occupied	69.3%	40.8%
Vacant	19.6%	14.9%

Age Distribution

Age Range	Assembly District No. 11	Nevada
< 5	9.5%	7.0%
5-17	21.1%	17.7%
18-39	34.4%	30.9%
40-59	23.7%	26.9%
60-74	8.6%	12.7%
> 74	2.6%	4.6%

Educational Attainment (25 Years and Older)

Education Level	Assembly District No. 11	Nevada
No High School Diploma	47.8%	15.7%
High School Graduate	29.2%	29.2%
Associate's Degree	17.3%	32.9%
Bachelor's Degree	4.3%	14.7%
Graduate Degree	1.4%	7.4%

Employment By Industry—Top Five

Industry	Assembly District No. 11	Nevada
Accommodation and Food	20.9%	15.2%
Construction	16.0%	7.6%
Professional	12.8%	9.5%
Retail	11.1%	10.8%
Arts and Recreation	9.2%	8.2%

Active Voters by Party†

Party	Assembly District No. 11	Nevada
Democrat	64.5%	42.1%
Independent American	3.3%	4.7%
Libertarian	0.7%	0.7%
Non-Partisan	17.4%	17.5%
Other	0.7%	0.6%
Republican	13.4%	34.4%

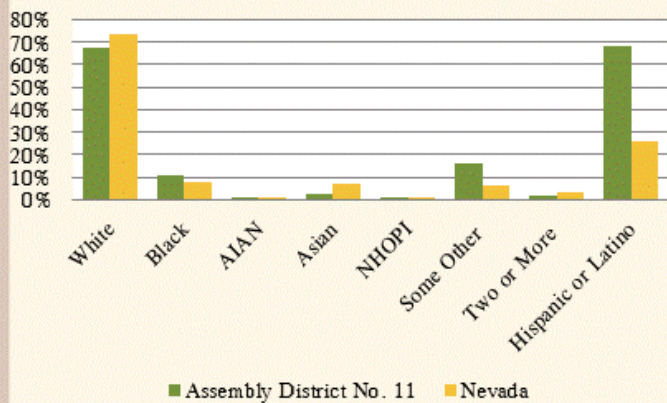
*Source: American Community Survey, United States Census Bureau, 2011.

**The "Hispanic or Latino Origin" category is not considered a racial group by the U.S. Census Bureau. Only the other seven categories shown on this page will total 100 percent. The U.S. Census Bureau has reported that, in the past, a majority of persons selecting the "Some Other Race" category were of Hispanic or Latino origin. Please note that American Indian and Alaska Native is represented as AIAN and Native Hawaiian and Other Pacific Islander is represented as NHOPI.

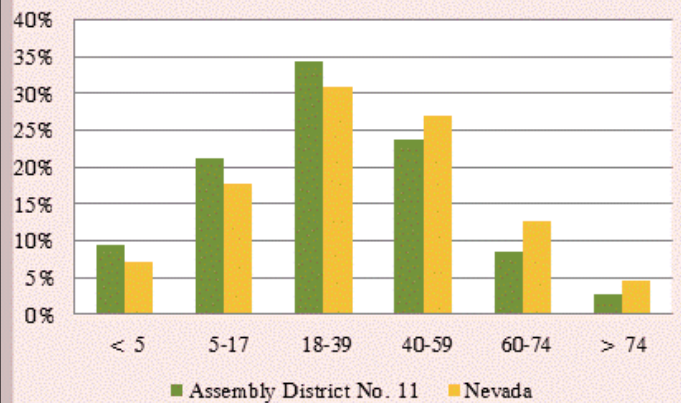
†"Active Voter" includes any registered voter who is legally entitled to vote. Source: Secretary of State, December 2012.

Statistical Profile of Nevada Assembly District No. 11 of the 77th Session (2013)

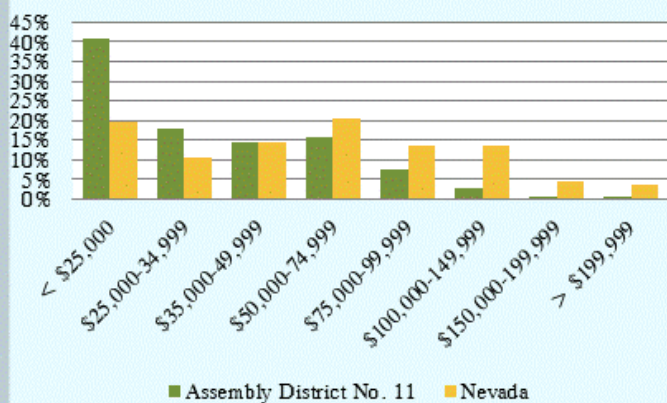
Race and Ethnicity**



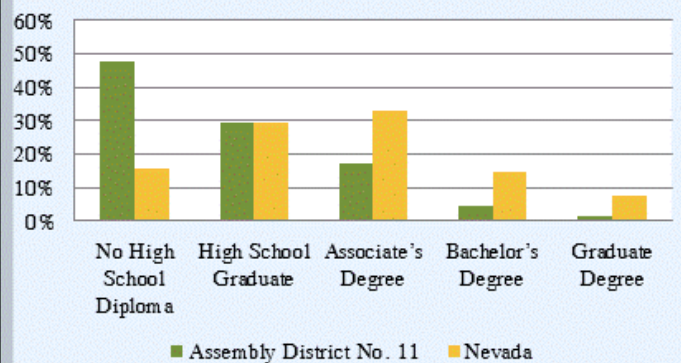
Age Distribution



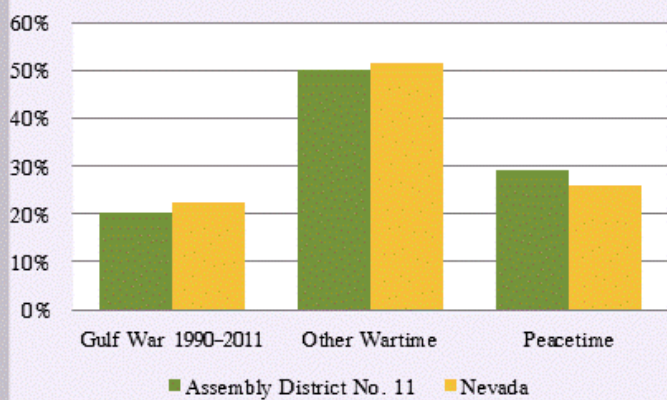
Household Income



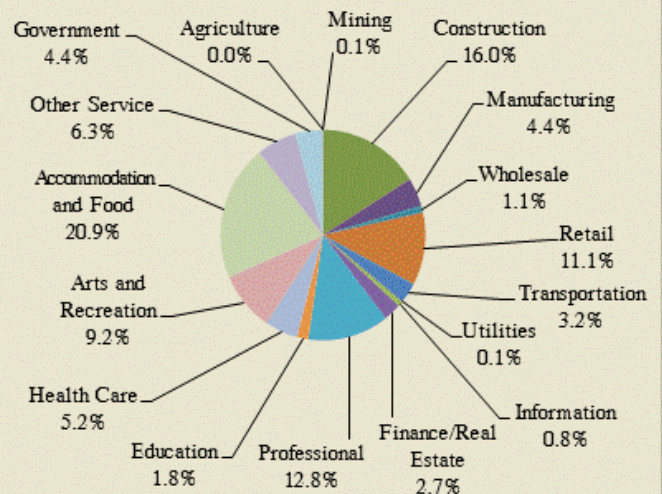
Educational Attainment (25 Years and Older)



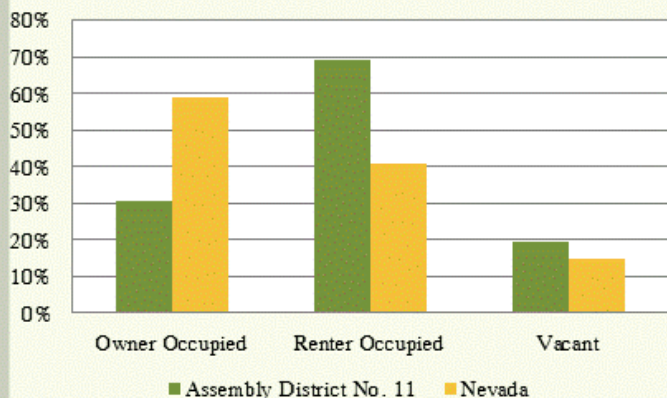
Veteran Status



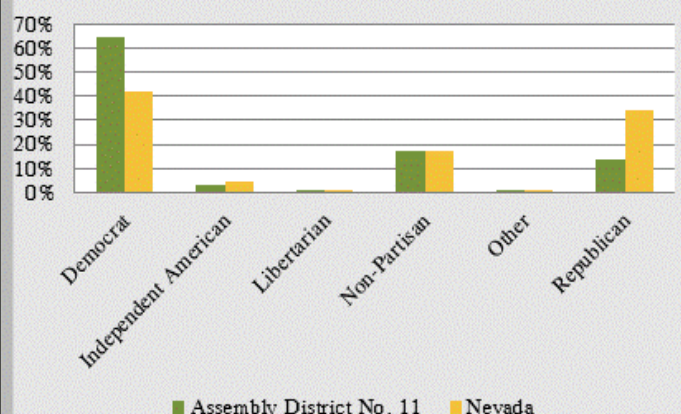
Employment By Industry



Home Occupancy Status



Active Voters By Party†



**Hispanic or Latino is reported by the U.S. Census Bureau as a language group, separately. Racial population data is based on self-identification. Respondents have the option of selecting one or more races. Please note that American Indian and Alaska Native is represented as AIAN and Native Hawaiian and Other Pacific Islander is represented as NHOPI.
†Source: Secretary of State, December 2012.