



BRIAN SANDRA AL
Director

STATE OF NEVADA
PUBLIC UTILITIES COMMISSION

SAM THOMPSON
Chairman

REBECCA WAGNER
Commissioner

ALAINA BURFENSHAW
Commissioner

CRYSTAL JACKSON
Executive Director

January 27, 2011

Lorne Malkiewich, Director
Legislative Counsel Bureau
Carson City, Nevada 89710

Dear Mr. Malkiewich:

Pursuant to the requirements of NRS 704.754, the following is a list and description of active transmission plans or transmission projects proposed within the State of Nevada that the Public Utilities Commission of Nevada ("Commission") has been made aware of since the last legislative session.

1. The One Nevada Transmission Line Project ("ON Line")

This is a project that both Great Basin Transmission, LLC ("GBT") and NV Energy were proposing to construct separately (i.e. two distinct projects, two separate lines). The ON Line is a proposed 234 mile, 500 kilovolt ("kV") line that will originate 18 miles northwest of Ely, Nevada pass through eastern Nevada, and end 20 miles northeast of Las Vegas, Nevada. The purpose of the ON Line project is to link the northern and southern parts of the State and allow for the transfer of renewable energy between the north and south. See Attachment A to this report.

As part of Docket No. 10-02009, GBT and NV Energy proposed to combine their separate transmission projects and develop one joint project. The Commission approved development and construction of the joint ON Line project, with GBT owning 75% of the proposed ON Line project and NV Energy owning the remaining 25%. Construction of the ON Line project is proposed to begin in the 1st Quarter of 2011 and be completed and operational by January 1, 2013. Once constructed the project is expected to allow the transfer of almost 800 MW of energy between northern and southern Nevada.

2. The South West Intertie Project – North ("SWIP-North")

This project is being developed by GBT. The project consists of a proposed 275 mile, 500 kV transmission line from the northern point of the ON Line project (near Ely, Nevada) to the Midpoint substation located in central Idaho. See Attachment A to this report. The purpose of the

proposed project is to allow renewable energy from the Pacific Northwest and Central United States (Utah, Wyoming and Montana) to be delivered into the Las Vegas load centers and potentially to California. GBT has yet to file an application for a Utility Environmental Protection Act ("UEPA") Permit to Construct with the Commission, but based upon Staff's conversations with GBT, a request to construct the SWIP-North line is expected sometime during the first half of 2011.

3. The Southern Nevada Intertie Project ("SNIP")

This project is also being developed by GBT. The project consists of a proposed 60 mile, 500 kV transmission line from the Harry Allen substation, located 20 miles northeast of Las Vegas, Nevada (the southern point of the ON Line project), to the Eldorado substation located near Boulder City, Nevada. See Attachment A to this report. The purpose of the proposed project is to transfer the renewable energy from the SWIP-North and ON Line transmission lines to the Eldorado substation for access into California. GBT has filed an application for a UEPA Permit to Construct with the Commission. Construction of the SNIP transmission line is expected in 2011 with an in-service date of 2013. (See Docket No. 08-12010.)

4. Vulcan Power Company – Nevada to California Transmission Line Project

This project is being developed by Vulcan Power Company. The proposed project consists of two segments of 500 kV transmission line to interconnect Vulcan Power Company's proposed geothermal generation plants, located near Fernley, Nevada and Salt Wells, Nevada, to Bishop, California. See Attachment B to this report. The combined distance of the 500 kV transmission line would be 263 miles. Vulcan Power Company has filed an application for a UEPA Permit to Construct with the Commission. (See Docket No. 08-07017.)

5. Vulcan Power Company – Yerington to Las Vegas Transmission Project

This project is being developed by Vulcan Power Company. The Project consists of a proposed 347 mile, 500 kV transmission line from Yerington, Nevada to Jean, Nevada. See Attachment C to this report. The purpose of the proposed project is to deliver energy from geothermal resources located in northern Nevada into the Las Vegas load center and into California. Vulcan Power Company has filed an application for a UEPA Permit to Construct with the Commission. (See Docket No. 08-12014.)

6. TransWest Express Transmission Project

This project is proposed by TransWest Express, LLC. The project consists of a proposed 765 mile, 600 kV Direct Current ("DC") transmission line from a proposed terminal converter station located in Carbon County, Wyoming to a proposed terminal converter station located near the Marketplace substation near Boulder City, Nevada. Approximately 111 miles of the 600 kV DC transmission line will be located in Nevada. See Attachment D to this report. The purpose of this project is to deliver approximately 3,000 Megawatts ("MW") of power from renewable wind resources located in Wyoming to the Desert Southwest Region. TransWest Express has filed an

application for a UEPA Permit to Construct with the Commission. Construction is expected to begin in 2013, with an in-service date of 2015. (See Docket No. 09-11005.)

7. Energy Gateway South Transmission Project

This project is proposed by Rocky Mountain Power, a division of PacifiCorp. The proposed project consists of a 750 mile, 500 kV transmission line from the Aeolus substation, located in Carbon County, Wyoming, to the Crystal substation located in Clark County, Nevada. PacifiCorp filed an application for a UEPA Permit to Construct with the Commission in May 2009 and withdrew the application on January 5, 2011. PacifiCorp stated that interested third parties have not been able to make the financial commitments necessary to allow the project to be built and therefore has postponed the project indefinitely. (See Docket No. 09-05029.)

8. Eldorado to Ivanpah 230 kV Transmission Project

This project is being developed by Southern California Edison ("SCE"). The proposed project would upgrade 35 miles of an existing SCE 115 kV transmission line to 220 kV from a proposed substation at Ivanpah to the Eldorado substation, located near Boulder City, Nevada. The proposed Ivanpah substation is a 220/115 kV substation 7 miles west of the California/Nevada border in the Ivanpah Dry Lake area in San Bernardino County, CA. See Attachment E to this report. The purpose of this project is to allow renewable solar resources near the California/Nevada border to be delivered into the Eldorado substation for access into California. SCE has filed an application for a UEPA Permit to Construct with the Commission and is expecting a Record of Decision from the Bureau of Land Management to be issued at the end of January 2011. Construction is expected to begin in 2011 with an in-service date of 2013. (See Docket No. 10-04027.)

9. Solar Express Transmission Project

This project is being developed by Renewable Energy Transmission Company ("Retco"). The proposed project consists of a 122 mile, 500 kV DC transmission line between Amargosa Valley, Nevada and the Eldorado-Marketplace-McCullough substations near Boulder City, Nevada. Two 500 kV DC terminals are to be constructed; one in Amargosa Valley, Nevada and one south of Pahrump, Nevada. See Attachment F to this report. The purpose of this project is to allow renewable solar resources located near Amargosa Valley to be delivered into the Eldorado Substation for access to the California and Nevada Energy Markets. Retco has yet to file an application for a UEPA Permit to Construct with the Commission.

10. Gateway West Transmission Project

This is a project being jointly developed by Idaho Power and Rocky Mountain Power Company. This proposed project would be comprised of 1,150 miles of high voltage transmission line from Glenrock, Wyoming to Melba, Idaho. The project would include approximately 300

miles of 230 kV lines in Wyoming and approximately 850 miles of 500 kV lines in Wyoming and Idaho. The proposed route of the Gateway West transmission line does not encompass Nevada; however, an alternative route includes portions of the Nevada-Utah-Idaho border. See Attachment G to this report. The purpose of this project is to improve system reliability and increase transmission capacity for renewable energy projects located within Idaho Power's and Rocky Mountain Power's service territories. The BLM is scheduled to release the Draft Environmental Impact Statement in the 1st Quarter of 2011. As of yet, an application for a UEPA Permit to Construct has not been filed with the Commission.

11. Anaconda-Molly Substation Expansion Project

This project is being developed by NV Energy. The proposed project consists of 6 miles of 230 kV transmission line and an expansion of the Anaconda-Moly Substation located near Tonopah, Nevada for interconnection of a 230 kV transmission line. See Attachment H to this report. The purpose of this project is to interconnect the Crescent Dunes Solar Energy Project. The Crescent Dunes Solar Project, developed by Tonopah Solar, LLC, is expected to generate 110 MW of solar generated renewable energy. The BLM issued a Record of Decision in December 2010, approving the Crescent Dunes Project. NV Energy has filed an application for a UEPA Permit to Construct with the Commission. Construction of the Crescent Dunes Project is expected to start in mid 2011 with a completion date of 2013. (See Docket 10-09026.)

12. Chinook Power Transmission Line Project

This project is being developed by TransCanada Pipeline Company ("TransCanada"), via one of its subsidiaries. The proposed project would be comprised of a 1,000 mile, 500 kV high voltage DC transmission line that will originate near Harlowton, Montana (i.e. Central Montana), pass through eastern Nevada, and terminate south of Las Vegas, Nevada in the Eldorado Valley. See Attachment I to this report. The purpose of this project, which has a line rating of 3000 MW, is to deliver the energy from high quality wind resources located in Montana to energy markets in the Desert Southwest Region, including California, Nevada and Arizona. The Federal Energy Regulatory Commission ("FERC") issued an Order Authorizing Proposals and Granting Waivers for the project in February 2009. (See FERC Docket No. ER09-432-000.) TransCanada issued an open season during the second half of 2010 where it sought to gather interest from developers and utilities in subscribing for transmission service via the Chinook Power transmission line. The open season closed on December 16, 2010, and TransCanada is currently evaluating the results. No application for a UEPA Permit to Construct the Chinook project has been filed with the Commission.

13. Zephyr Power Transmission Line Project

This project is also being developed by TransCanada, via one of its subsidiaries. The proposed project would consist of a 1,100 mile, 500 kV high voltage DC transmission line that will originate near Medicine Bow, Wyoming (i.e. Southeast Wyoming), pass through eastern Nevada,

and terminate south of Las Vegas, Nevada in the Eldorado Valley. See Attachment I to this report. The purpose of this project, which has a line rating of 3000 MW, is to deliver the energy from high quality wind resources located in Wyoming to energy markets in the Desert Southwest Region, including California, Nevada and Arizona. The FERC issued an Order Authorizing Proposals and Granting Waivers for the project in February 2009. (See FERC Docket No. ER09-433-000.) TransCanada issued an open season during the first half of 2010 where it sought to gather interest from developers and utilities in subscribing for transmission service via the Zephyr Power transmission line. The open season results were announced on May 20, 2010, and TransCanada reported interest in the full allocation of 3000 MW of transmission capacity. TransCanada's decision to proceed with the regulatory/permitting phase and construction of the estimated \$3 billion project is predicated on the ability of the Wyoming wind generators to secure long-term power purchase agreements, which TransCanada and the wind developers are currently pursuing in a coordinated manner. No application for a UEPA Permit to Construct has been filed with the Commission. If the project does proceed, construction is currently scheduled to begin in the 2014 time period with completion to occur sometime during 2016.

14. Ft. Sage Transmission Line Project

This project is being developed by NV Energy. This proposed project would consist of development of 50 miles of 345 kV transmission line from the Fort Sage substation located near the California/Nevada border southeast of Honey Lake to the East Tracy Substation located near the Tracy Power Plant in Storey County, Nevada. The project would also expand the Fort Sage and Tracy substations with additional 345 kV portals. See Attachment J to this report. The purpose of this project is to increase transmission capacity to support additional renewable energy generation and system reliability to the North Valley areas of the Truckee Meadows. NV Energy has filed an application for a UEPA Permit to Construct with the Commission. (See Docket No. 09-04007.)

15. Renewable Energy Conceptual Transmission Plan

Pursuant to the requirements of Assembly Bill 387 and the proposed regulations in the Commission's rulemaking Docket No. 09-07011, regarding the development of transmission facilities to serve renewable energy zones within the State of Nevada, NV Energy filed a Renewable Energy Conceptual Transmission Plan ("RECTP") as part of Docket No. 10-07003. See Attachment K to this report. The Commission, as a part of its Orders in Docket No. 10-07003, accepted the RECTP; however, there are no plans to construct any of the incremental facilities detailed in the RECTP until renewable energy developers request transmission interconnection with NV Energy.

16. Valley Electric Association Transmission Project

This project is being developed by Valley Electric Association. This proposed project consists of 52 miles of 230 kV transmission line from the Northwest substation located in North Las Vegas, Nevada to a proposed Sterling Mountain substation located southwest of Mercury,

Nevada and looping into Valley Electric's substation in Pahrump, Nevada. See Attachment L to this report. The purpose of this project is to provide needed transmission reliability to residents in Valley Electric's service territory, while opening up future transmission potential for green energy sources to serve the greater Las Vegas area. Construction of the transmission line began in December 2010 and is expected to be completed in early 2012.

17. Navajo Transmission Project

This project is being developed by Dine Power Authority, an enterprise of the Navajo Nation. The proposed project consists of 470 miles of 500 kV transmission line from the Four Corners area of New Mexico to the Marketplace substation located near Boulder City, Nevada. See Attachment M to this report. The purpose of the project is to improve reliability of the high voltage transmission system in the region, allow increased economical power sales and purchases, improve economic conditions of the Navajo Nation, and facilitate development of Navajo Nation energy resources. In March 2009, the Board of Indian Appeals of the U.S. Department of Interior vacated the Record of Decision by the Navajo Regional Director of the Bureau of Indian Affairs and remanded the matter back to the Navajo Regional Director for further consideration and a new decision. Currently no updated information is available regarding a construction schedule or completion date for this project.

Please feel free to contact me should you have questions about this report.

Sincerely,


Crystal Jackson
Executive Director

ATTACHMENT A
Oregon

Idaho
Owyhee County

Midpoint Substation
Twin Falls
Twin Falls County

Lincoln County
Jerome County
Cassia County
Power County
Bannock County
Caribou County
Oneida County
Franklin County
Bear Lake County

SWIP North

Humboldt County

Pershing County

Churchill County

Nevada

Mineral County

Esmeralda County

California

Lander County

Eureka County

Elko

Elko County

White Pine County

Thirtymile Substation
(Robinson Summit)

Ely

ON Line

Nye County

Lincoln County

Pioche

Harry Allen Substation

Clark County

SNIP

Las Vegas

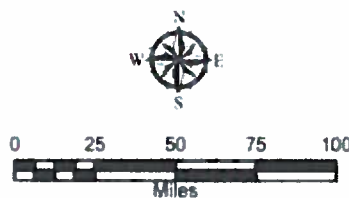
Eldorado Substation

Utah

Arizona

Legend

- ON Line
- SWIP North
- SNIP
- Substations
- States
- Counties



Great Basin Transmission, LLC

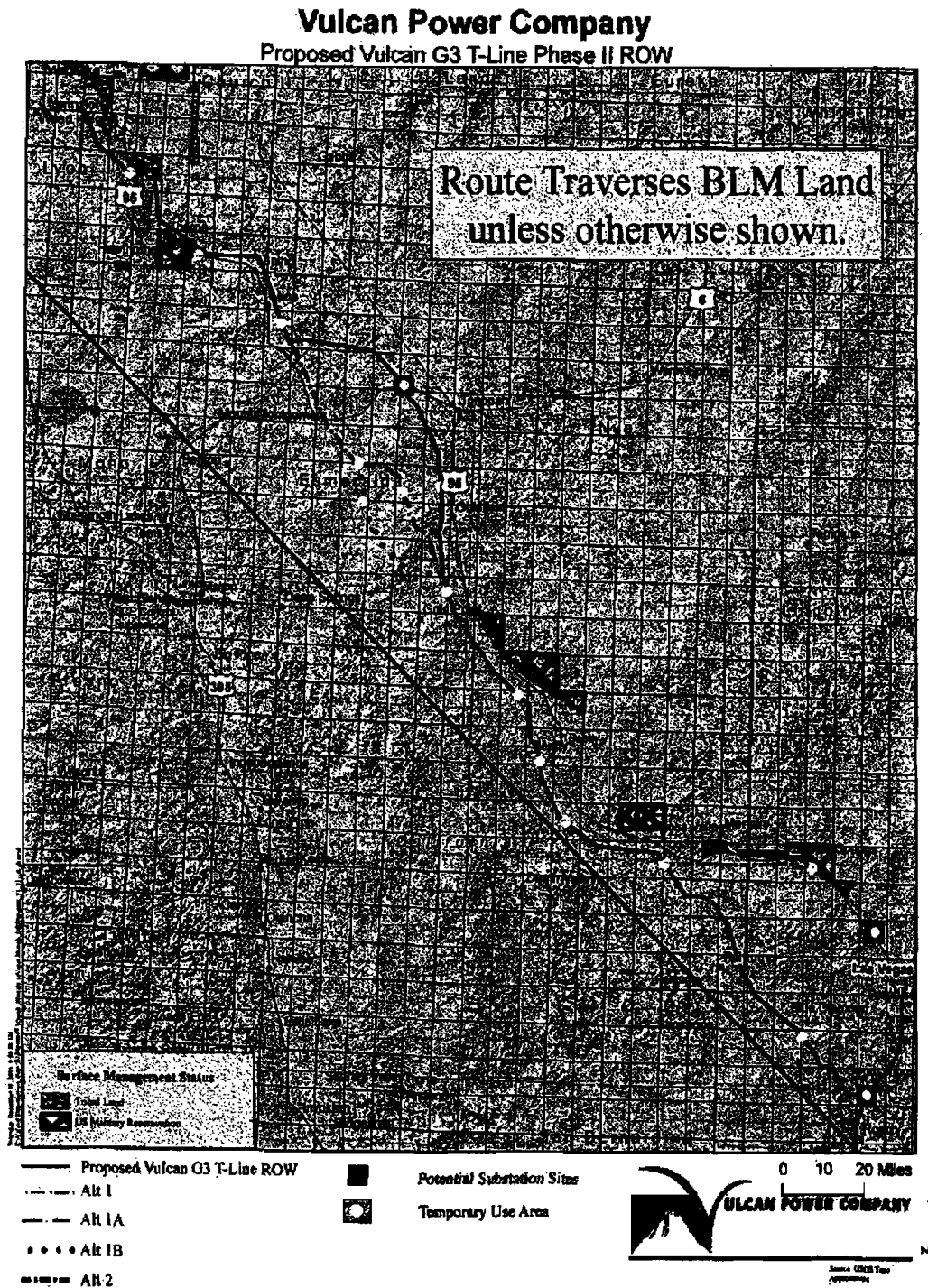
Project Location Map

Attachment B



3/1 1948 dr
Source 1905 Topo
Approximate

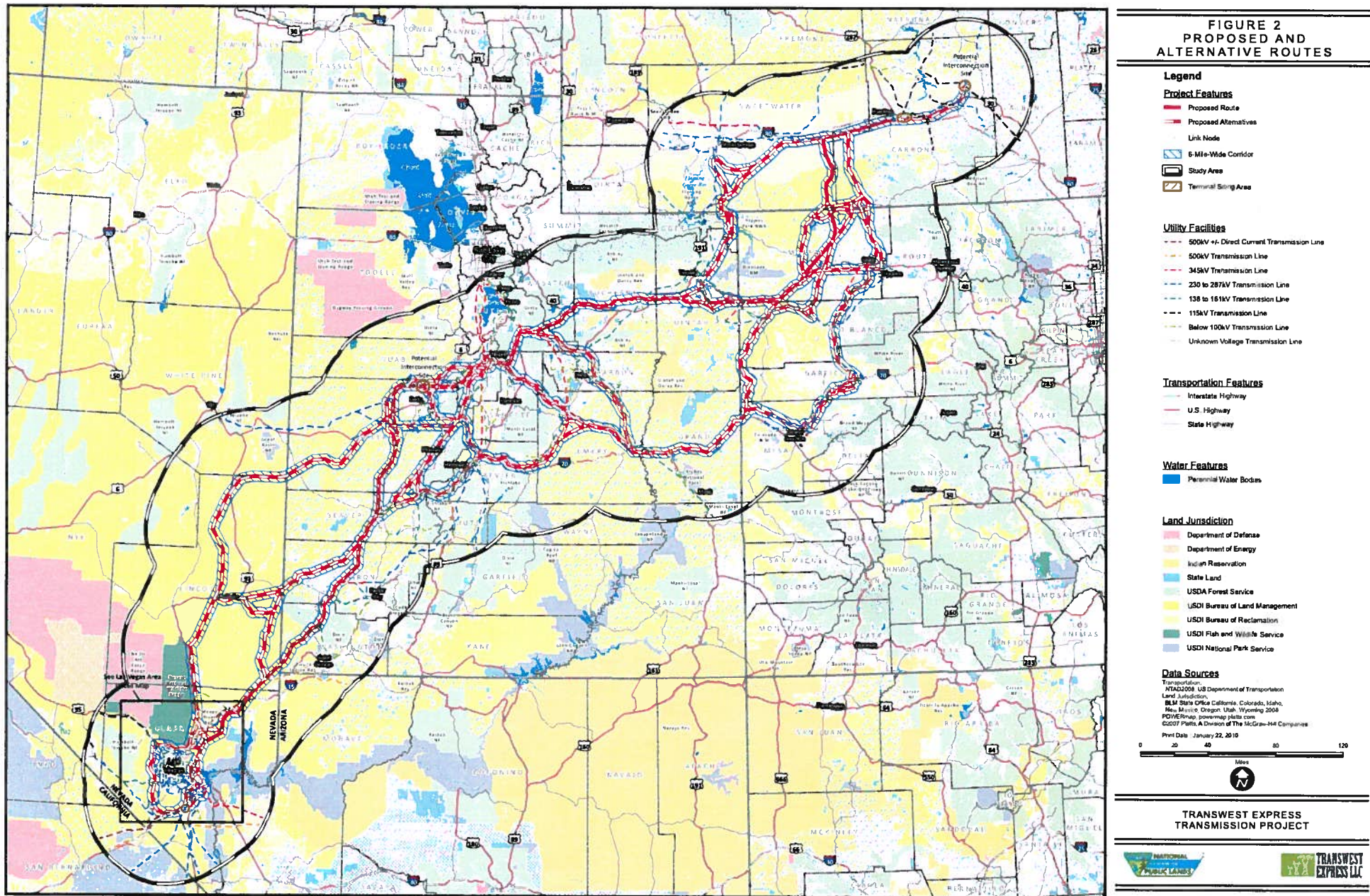
UEPA Application Vulcan Power Company 500kV Transmission Line Project
November 2008



Black and White Map

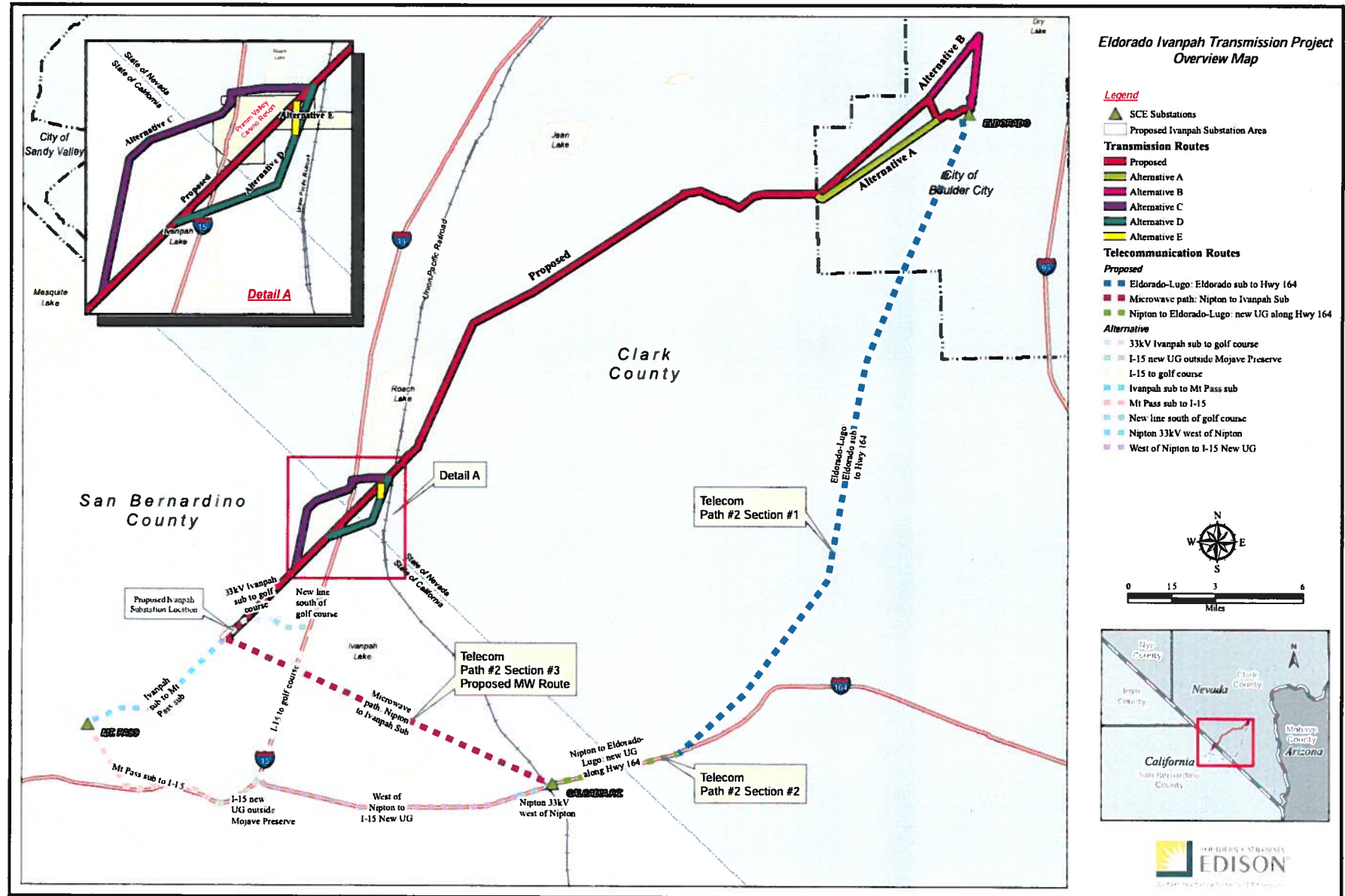
Attachment D

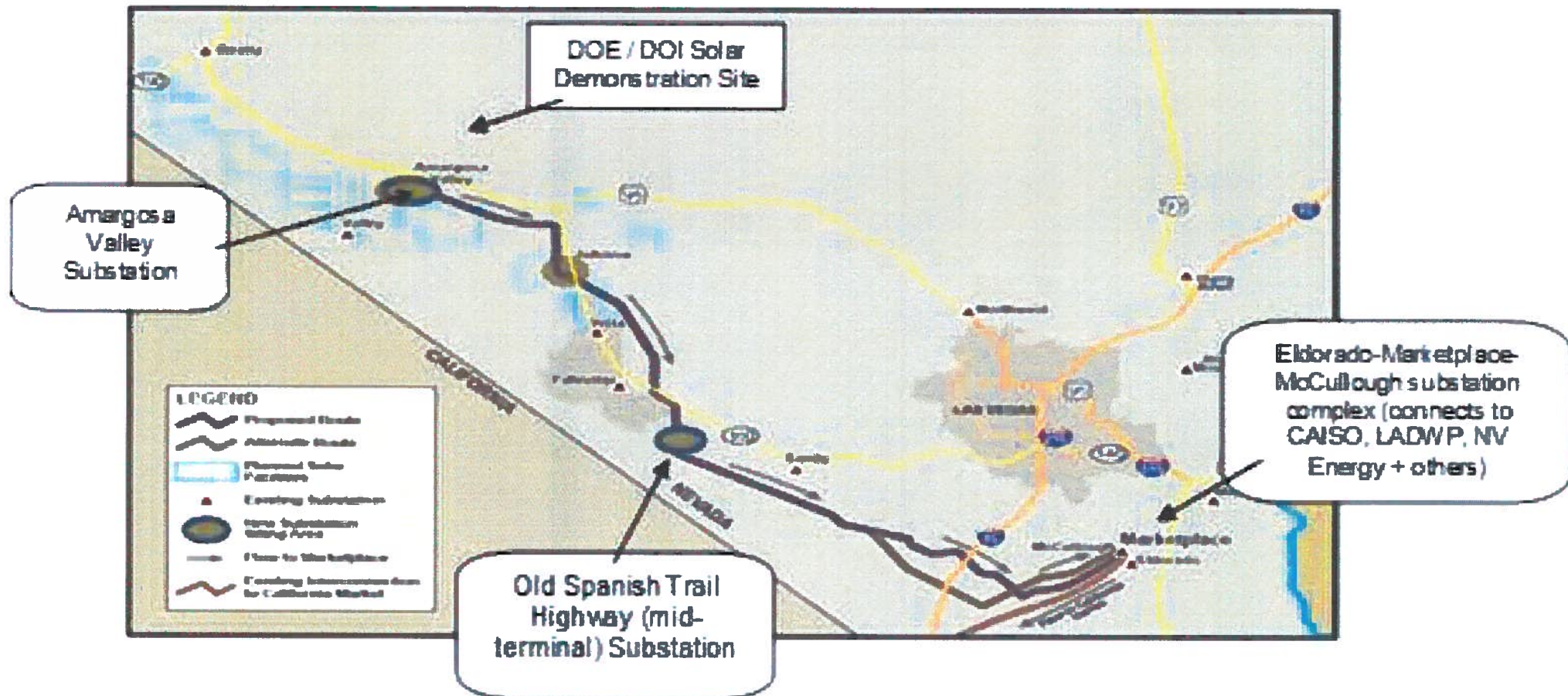
**FIGURE 2
PROPOSED AND
ALTERNATIVE ROUTES**



Attachment E

Eldorado Ivanpah Transmission Project Overview Map





Project Fact Sheet

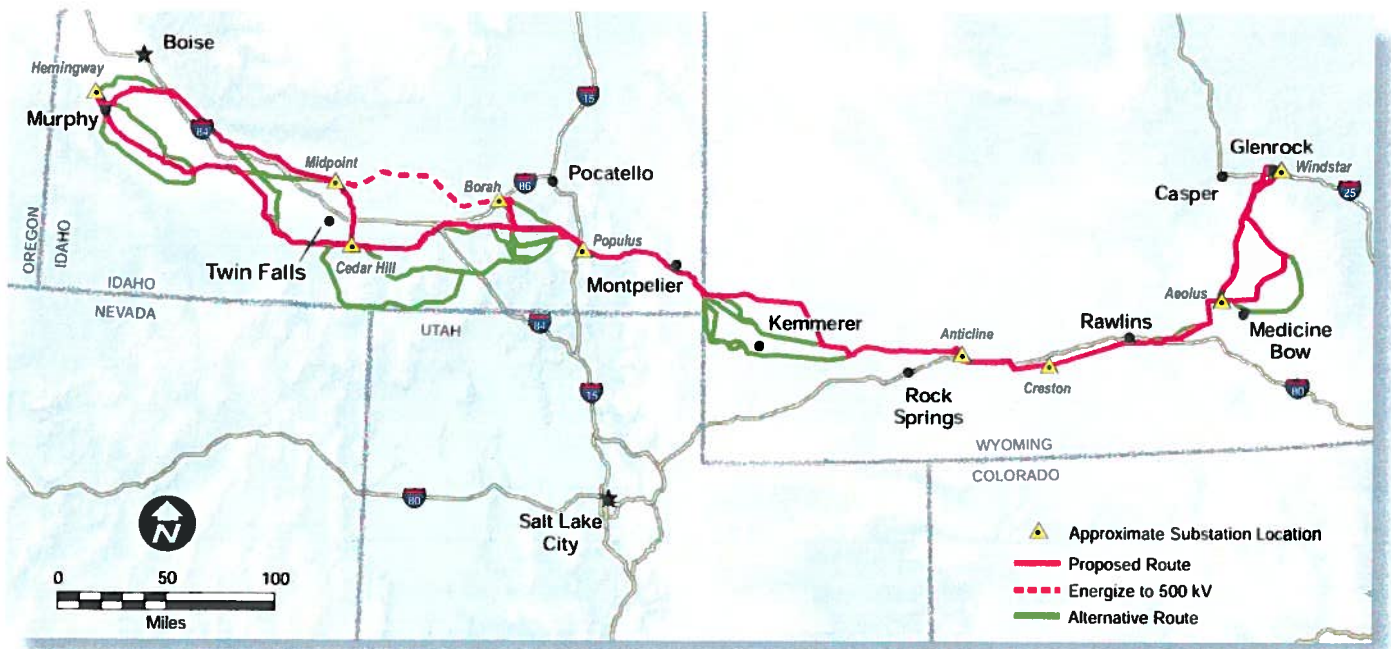
Gateway West Transmission Line Project

Idaho Power and Rocky Mountain Power are planning to build a high voltage transmission line across southern Wyoming and southern Idaho. This project will supply present and future needs of customers and improve electric system reliability in the service territories of both companies. In addition, the project will enable delivery of new generating resources, including wind, to more customers in the region. Known as Gateway West, line segments will be completed in phases between 2014 and 2018.

At certain times of high customer demand, transmission lines reach full capacity. Idaho Power and Rocky Mountain Power are committed to ensuring reliable electric service to customers and respond to others requesting use of the transmission system. Work has begun to complete this project in the next five to seven years.

Preliminary Corridor Map and Study Area

This project is jointly proposed by Idaho Power and Rocky Mountain Power to build and operate approximately 1,150 miles of new high-voltage transmission lines between the planned Windstar Substation near Glenrock, Wyoming and the planned Hemingway Substation near Melba, Idaho. The project would include approximately 300 miles of 230 kilovolt (kV) lines in Wyoming and approximately 850 miles of 500 kV lines in Wyoming and Idaho.



Map as of 1/29/2010.

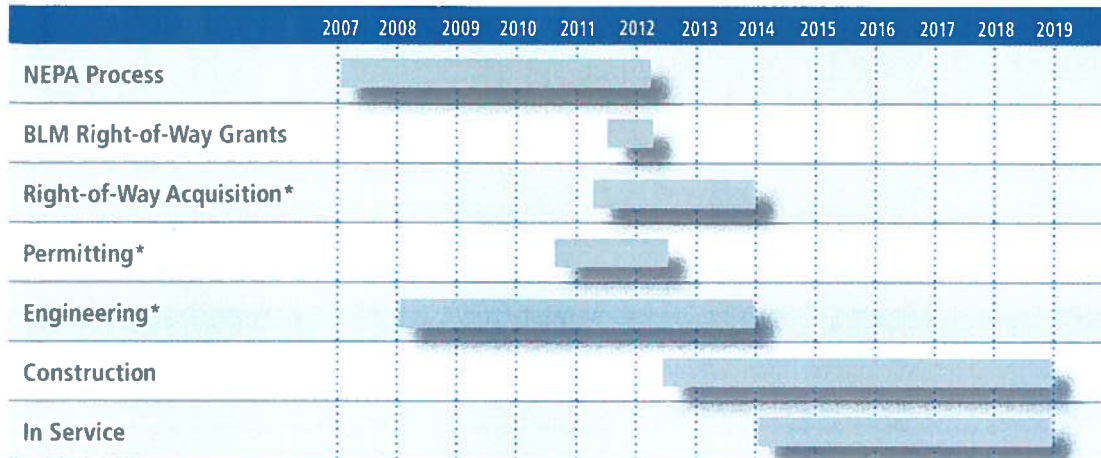
April 2010



GATEWAY WEST

Transmission Line Project

Proposed Project Timeline



*Dates for segments between the Populus and Hemingway substations are to be determined.

Environmental Review & Permitting Process

Idaho Power and Rocky Mountain Power need to obtain a right-of-way grant from the Bureau of Land Management (BLM) and U.S. Forest Service (USFS) to build the proposed transmission lines on federal property. The companies will also apply for all necessary permits and approvals from other federal agencies, state agencies and local jurisdictions.

The BLM is the lead agency for the National Environmental Policy Act (NEPA) process. NEPA is a federal law that requires federal agencies to complete an environmental impact statement (EIS) for actions that may significantly affect the quality of the human

environment. An EIS provides a detailed analysis of the potential environmental impacts of a proposed range of reasonable alternatives. For the Gateway West Project, the BLM will prepare the EIS in cooperation with agencies such as the USFS and the states of Idaho and Wyoming.

The public will be invited to participate in the NEPA process, beginning with public scoping, and comment on the draft EIS. The BLM will also hold an official public comment period between finalizing the EIS and issuing a record of decision on the project. Dates and locations of public meetings will be published in local newspapers, mailed to project-specific mailing lists and posted on company and BLM Web sites.

For More Information

www.gatewaywestproject.com

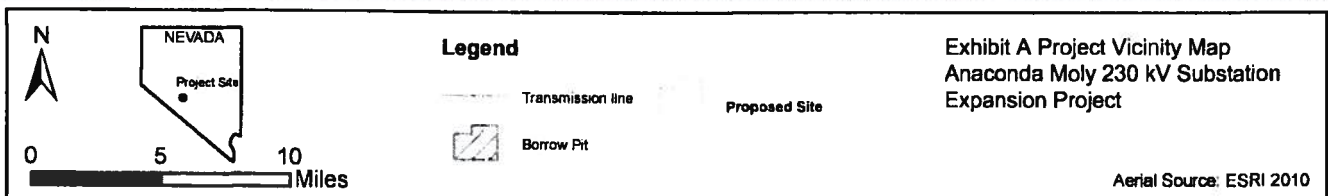
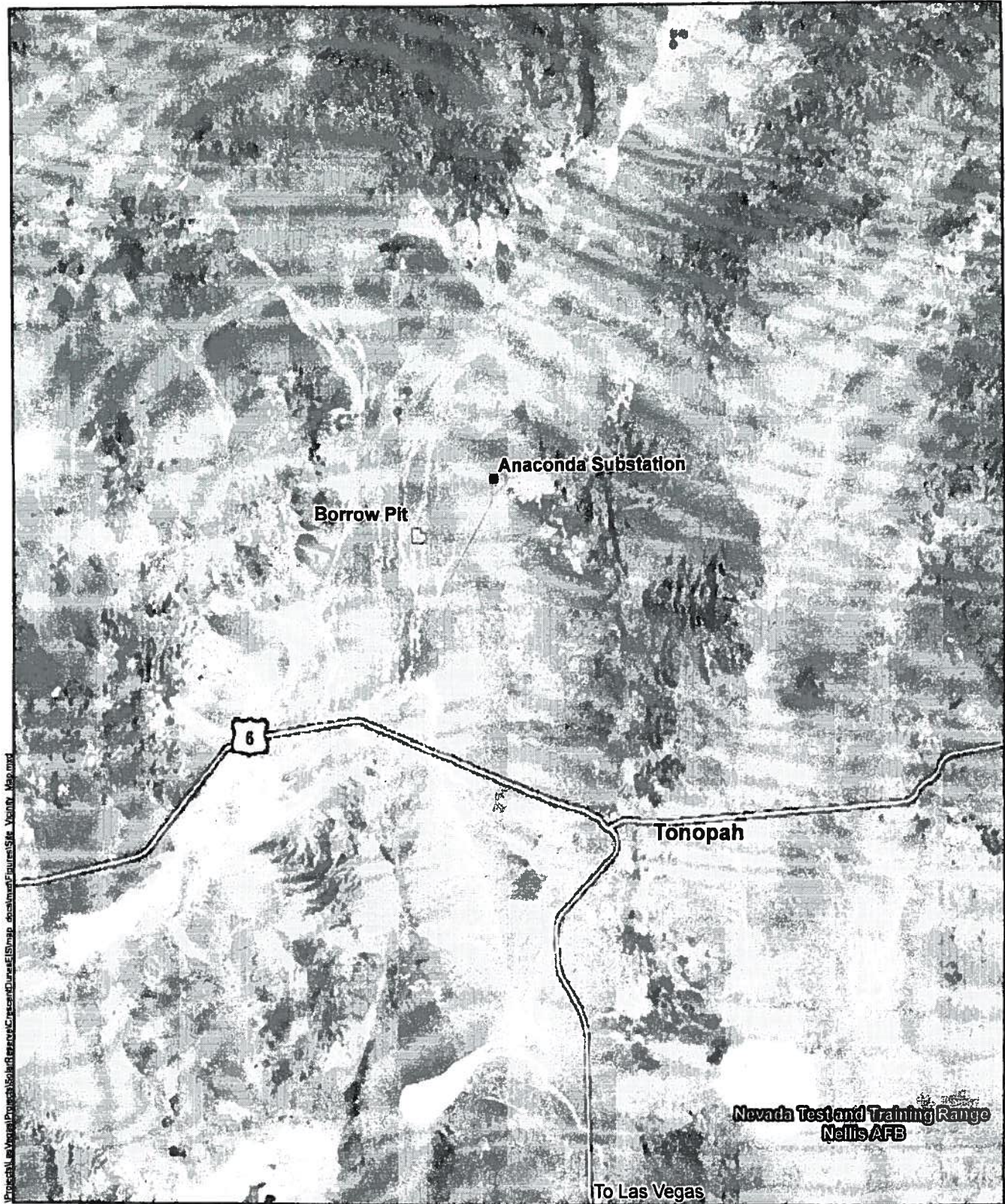
Idaho Power customers

- E-mail: gatewaywest@idahopower.com
- Call 888-757-6957

Rocky Mountain Power customers

- E-mail: ConstructionProjects@pacificorp.com
- Call 801-220-4221

To submit official public comment on the Gateway West Project, please contact the BLM directly at Bureau of Land Management, Gateway West Project, P.O. Box 20879, Cheyenne, WY 82003 or E-mail at Gateway_West_WYMail@blm.gov or visit www.wy.blm.gov/nepa/cfodocs/gateway_west. Comments submitted to either Idaho Power or Rocky Mountain Power are not considered part of the official record.





Montana

Harlowton

Oregon

Idaho

Wyoming

Borah

Chugwater

Cheyenne

Salt Lake City

Carson City

Nevada

Utah

Denver

Colorado

California

Las Vegas

Arizona

Eldorado Valley

New Mexico

Los Angeles

+J

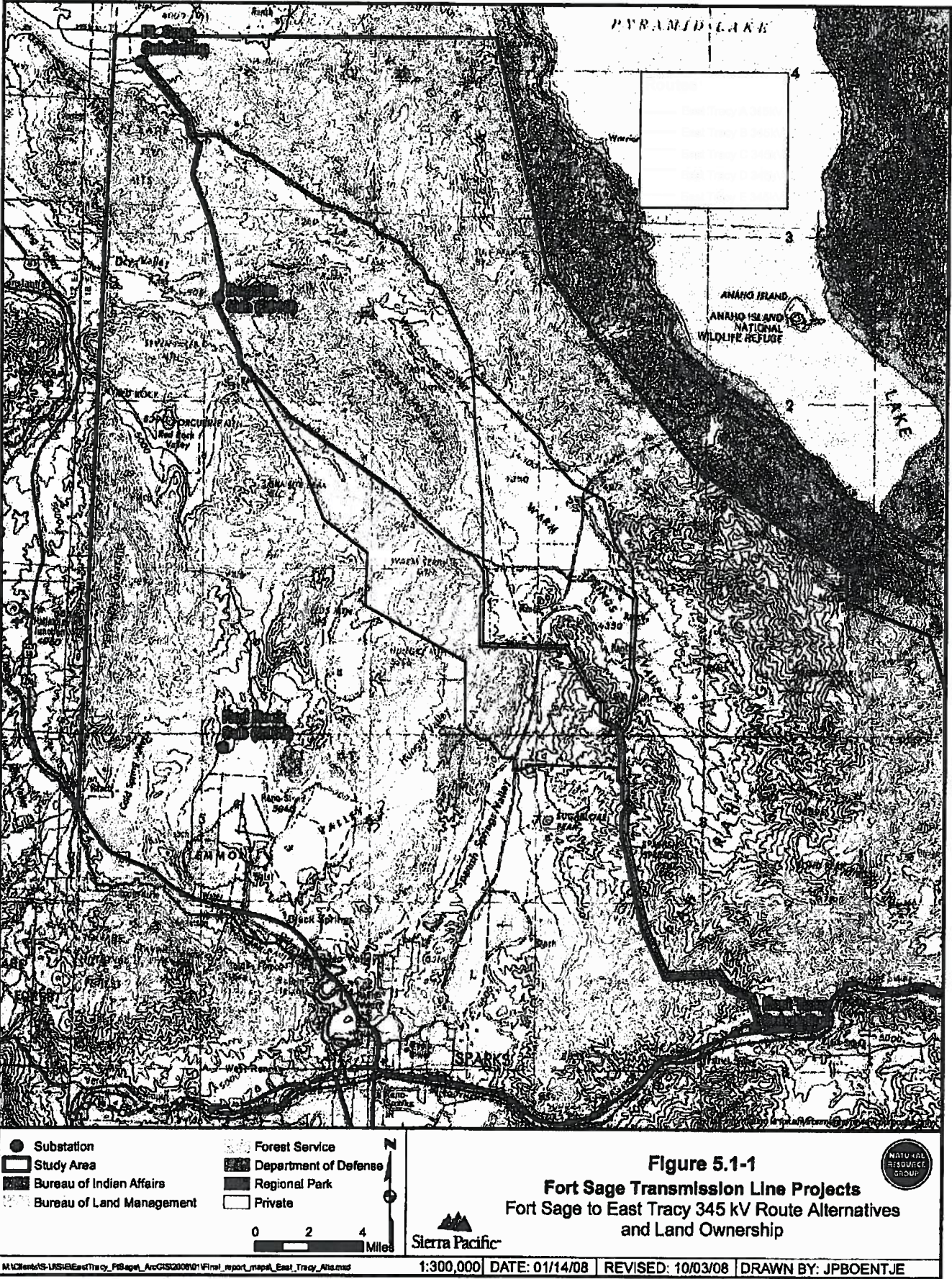
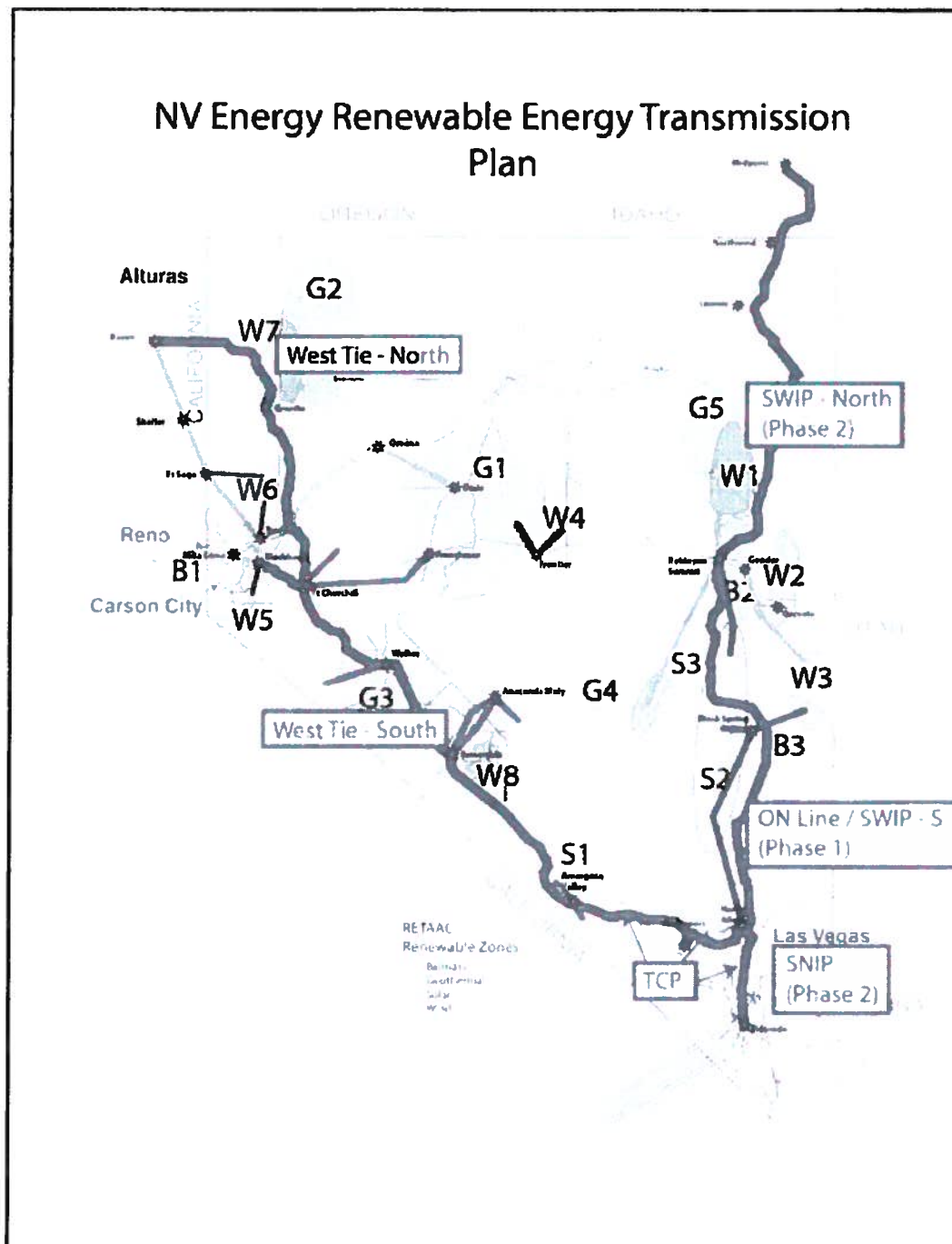
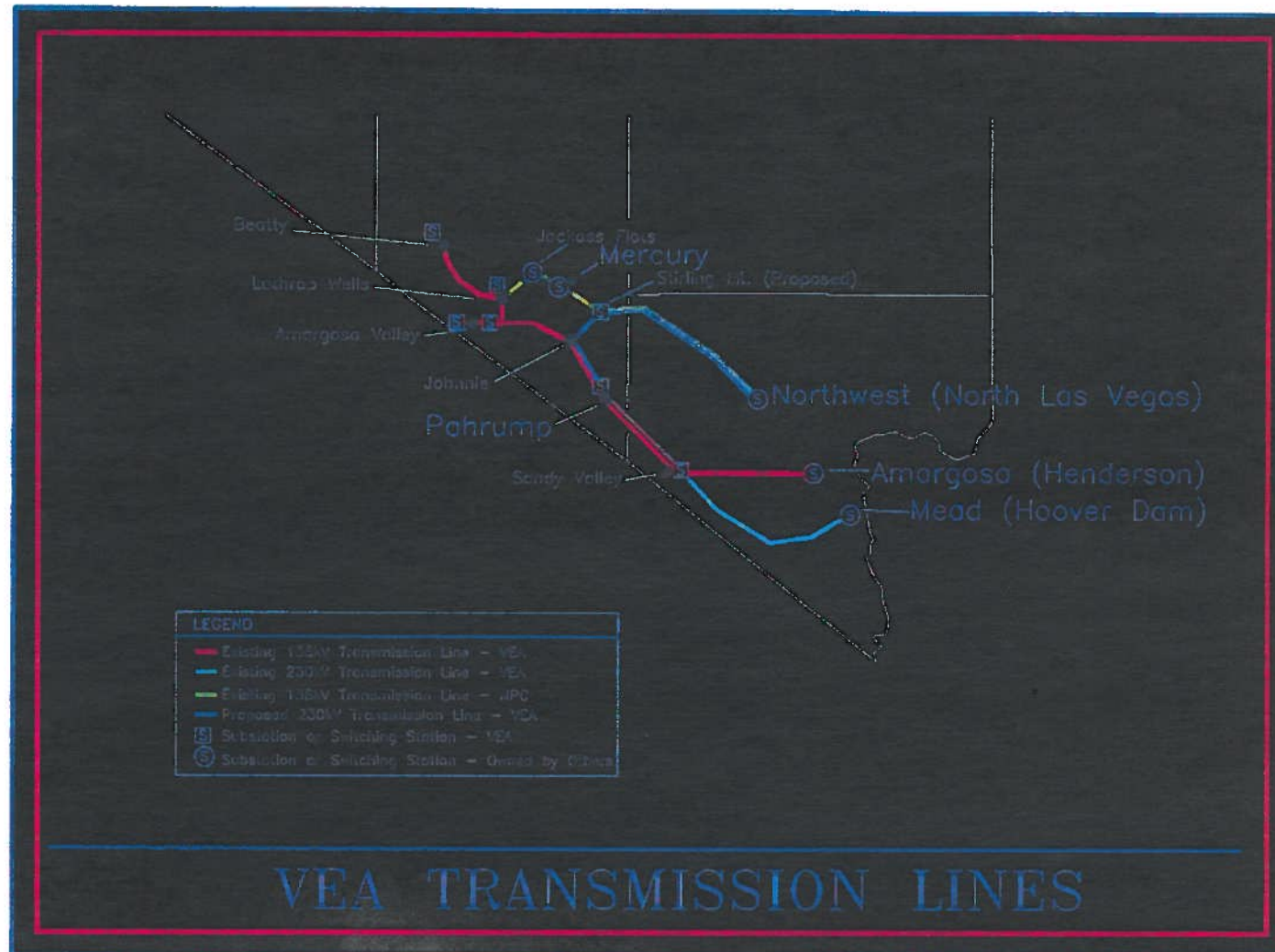


Figure TRAN-1 4
NV Energy Renewable Energy conceptual transmission plan



Attachment L



Map B

Attachment M

