

**REPORT ON ACTIVITIES AND OPERATIONS OF THE
DEPARTMENT OF HEALTH AND HUMAN SERVICES**

DIVISION OF HEALTH CARE FINANCING and POLICY

PURSUANT TO NRS 449.450 through 449.530

October 1, 2009



MICHAEL J. WILLDEN, DIRECTOR DEPARTMENT OF HEALTH AND HUMAN SERVICES
CHARLES DUARTE, ADMINISTRATOR DIVISION OF HEALTH CARE FINANCING AND POLICY

**REPORT ON ACTIVITIES AND OPERATIONS OF THE
DEPARTMENT OF HEALTH AND HUMAN SERVICES
DIVISION OF HEALTH CARE FINANCING and POLICY
PURSUANT TO NRS 449.450 through 449.530
October 1, 2009**

INDEX

NARRATIVE

SECTION 1

AUTHORITY AND OVERVIEW

**SUMMARY INFORMATION and ANALYSES
HOSPITALS WITH 100 or MORE BEDS**

**SUMMARY INFORMATION AND ANALYSIS
ALL HOSPITALS**

EXHIBITS

SECTION 2

HOSPITAL INFORMATION

EXHIBIT 1

SECTION 3

CAPITAL IMPROVEMENTS

EXHIBIT 2

SECTION 4

INVENTORY OF SERVICES

EXHIBIT 3

SECTION 5

COMMUNITY BENEFITS

EXHIBIT 4

SECTION 6	
HOME OFFICE ALLOCATION	EXHIBIT 5
SECTION 7	
ACCOUNTS RECEIVABLE POLICIES	EXHIBIT 6
SECTION 8	
COMPARATIVE FINANCIAL INDICATORS	EXHIBIT 7
SECTION 9	
FIVE YEAR COMPARATIVE FINANCIAL SUMMARIES	EXHIBIT 8
SECTION 10	
10 YEAR CHARTS AND GRAPHS (from Published Summary Utilization Report, December 31, 2008)	EXHIBIT 9

SECTION 1

AUTHORITY AND OVERVIEW

Pages 1 - 7

SUMMARY INFORMATION and ANALYSES HOSPITALS WITH 100 or MORE BEDS

Pages 1 – 3

SUMMARY INFORMATION AND ANALYSIS - ALL HOSPITALS

Pages 1 – 9

**REPORT ON ACTIVITIES AND OPERATIONS OF THE
DEPARTMENT OF HEALTH AND HUMAN SERVICES
DIVISION OF HEALTH CARE FINANCING and POLICY
PURSUANT TO NRS 449.450 through 449.530
October 1, 2009**

AUTHORITY AND OVERVIEW

AUTHORITY

The Division of Health Care Financing and Policy was created on July 1, 1997 (state fiscal year 1998). The division is responsible for carrying out the provisions of NRS 449, "Medical and Other Related Facilities".

NRS 449.520 requires the Director of the Department of Health and Human Services (DHHS) to prepare a report on DHHS activities and operations pertaining to the provisions of NRS 449.450 through 449.530, inclusive, for the preceding fiscal year. The report must be transmitted to the Governor, the Legislative Committee on Health Care and the Interim Finance Committee on or before October 1 of each year.

The functions and activities subject to NRS 449.450 through 449.530, inclusive, have been delegated to the Division of Health Care Financing and Policy (DHCFP).

DHCFP's responsibilities include:

1. Collecting financial information and other reports from hospitals;
2. Collecting health care information from hospitals and other providers;
3. Conducting analyses and studies relating to the cost of health care in Nevada and comparisons with other states;
4. Preparing and disseminating reports based on such information and analyses; and
5. Suggesting policy recommendations and reporting the information assimilated.

OVERVIEW OF NRS 449.450 - 449.530

Definitions and Regulations

NRS 449.450 provides definitions of specific titles and terminology used in NRS 449.450 through 449.530, inclusive.

NRS 449.460 authorizes the Director to adopt regulations, conduct public hearings and investigations, and exercise other powers reasonably necessary to carry out the provisions of NRS 449.450 through 449.530, inclusive.

Administration Fees Imposed for SFY 2009¹

NRS 449.465 authorizes the Director to impose fees upon admitted health care insurers to pay the costs of carrying out the duties and functions mandated or authorized in NRS 445.450 through 449.530, inclusive.

Amount authorized by Legislature	\$1,539,823
----------------------------------	-------------

Number of admitted health insurers:	Billed	700
	Paid	695
Companies not required to pay, determined late	Adjustment	5
Fee per admitted health insurer for:	DHCFP	2,144
	LCB	<u>50</u>
TOTAL FEE		2,194

Total fees received (including penalties)	\$1,642,330
Amount transferred to Legislative Committee	\$ 34,750
Penalties collected by DHCFP	\$ 117,500

Carrying Out Duties

NRS 449.470 authorizes the Director to utilize staff or contract with appropriate independent and qualified organizations to carry out the duties mandated by NRS 445.450 through NRS 449.530, inclusive.

Hospital Quality of Care

NRS 449.476 requires each hospital in Nevada to form a committee to ensure the quality of care provided by the hospital. Requirements for such committees are specified by the Joint Commission on Accreditation of Healthcare Organizations or by the federal government. In 2008 Nevada hospitals were in compliance with this provision.

Submission of Data by Hospitals – NRS Provisions

NRS 449.485 requires all hospitals in Nevada to use the UB-04 (or then current) form for all patients discharged from the hospital, and authorizes DHHS to adopt regulations requiring the submission of specific information by Nevada hospitals. DHHS previously adopted regulations implementing this section and DHCFP continues the activities necessary to carry out the regulations.

In conjunction with the University of Nevada, Las Vegas Center for Health Information Analysis (CHIA), DHCFP continues to maintain a statewide database of UB-04 information obtained from hospitals pursuant to this section. This database is the basic source of data used for

¹ Assessed 9-1-08 and due 10-1-08

hospital cost comparisons included in the Nevada Health Division's Personal Health Choices publication. The UB-04 database is also utilized by outside providers to analyze Nevada's health care trends. It may also be used to track the utilization of Nevada hospital services by non-residents. Additional information is included under Published Reports.

The information reported by hospitals includes admission source, payor class, zip code, acuity level, diagnosis, and procedures. This level of detail allows for trend analysis regarding various parameters, including specific illnesses and quality of care issues. The complete detail of the UB-04 database is also available in an electronic medium for those users desiring to conduct their own studies.

In December 2008 DHCFP adopted regulations to implement Assembly Bill 146 that requires greater transparency in reporting. The purpose is to increase public awareness of health care information concerning Hospitals and Ambulatory Surgical Centers in this State. DHCFP contracted with UNLV CHIA to create a Transparency Website that facilitates the public posting of information on Diagnostic Related Groups (DRG), diagnoses and treatments, as well as nationally recognized Quality Indicators. This information will be available in both fixed and interactive reports. These reports will enable the consumer and researchers to do comparative analyses between hospitals, indicators and diagnoses. The website is currently operational capability at www.nevadacomparecare.net. Currently only inpatient hospital information is posted. Both outpatient and ASC data are being collected, however they are not yet ready for posting. CHIA is also working to develop a program that adequately and accurately reports the information collected.

Manner in Which Hospitals are Reporting Information

[NRS 449.520 (2) (d)]

The hospitals report information in a consistent manner on their quarterly reports. Hospitals may use different generally accepted accounting procedures as promulgated by the American Institute of Certified Public Accountants. There is no reasonable way to compare these procedures between hospitals.

A new database has been implemented requiring electronic submission of the Nevada Hospital Quarterly Reports (NHQR). Information is recorded by the hospitals based on the best information available at the time the reports are submitted. Revised NHQRs are filed by the hospitals when material changes are discovered. These occur when a hospital's external auditors recommend changes or if the hospital itself discovers new information that results in changes. The database is housed at CHIA.

DHCFP is working with CHIA, the Nevada Hospital Association, and other stakeholders, to continually update the NHQR to assure consistency and to be a more useful tool for users.

NRS 449.490 requires the institutions subject to NRS 449.450 through 449.530 to file various reports that include financial and utilization data. Annual reports on capital improvements,

corporate home office allocation methodologies, expenses incurred for providing community benefits and statements of policies and procedures for providing discounted services and the manner in which patients' accounts receivables are handled are also required. Additionally, each hospital is required to have a complete charge master available that certain parties may review.

NRS 449.500 and NRS 449.510 requires the Director to conduct analyses and studies relating to the cost of health care in Nevada and other states, and other related matters.

NRS 449.530 authorizes the Director to impose an administrative fine if an institution violates any of the provisions of NRS 449.450 through 449.530, inclusive.

PUBLISHED REPORTS

NRS 449.510 requires the Director to prepare and file summaries of relevant information for public inspection and dissemination. DHCFP in conjunction with CHIA publishes or makes available various reports deemed "desirable to the public interest". Various documents including quarterly reports received from hospitals and utilization reports from other health care providers are maintained by DHCFP for public review and use.

CHIA has developed and continues to maintain a statewide database of UB-04 information obtained from hospitals pursuant to this section. This database is the basic source of data used for hospital cost comparisons included in the Nevada Health Division's publication, *Personal Health Choices*. The latest edition for the period 2004 - 2008 published in April of 2009 is included as ATTACHMENT A. *Personal Health Choices* and more information on the UB-04 data base may be found at the CHIA website at www.unlv.edu/research_centers/chia/.

During SFY 2008 CHIA continued to publish a package of standard reports based upon the UB-04 hospital utilization and cost information. These reports are now available for calendar years 1992 through 2008.

CHIA produces a wide array of reports used in market and trend analysis as well as studies in demographics. In addition to the standard reports available as noted, CHIA has the capability of analyzing billed charges, lengths of stay, cases and case mix by facility, patient location, admission type, admission source, discharge status, payer, Primary Service Area (PSA), and other items. CHIA is also able to search for trends by diagnosis codes and procedure utilization, service line, or any of the previously mentioned field categories. Facility statistics can be compared to other facilities, within or outside of its PSA or county. Close to one hundred variations of reports can be produced.

DHCFP provides comprehensive summaries of the utilization and financial data reported by Nevada hospitals and other health care providers. These reports, in the form of Excel workbooks, provide full access to most of the information maintained by DHCFP for anyone wishing to perform analyses. The reports are titled the Nevada Hospital Quarterly Reports (NHQRs). Complete reports are available for download on CHIA's website at www.unlv.edu/research_centers/chia/.

For the acute care and non acute care hospitals utilization and financial reports are available. A summary of the Utilization and Financial information for the acute and non acute care hospitals is also available. Another set of reports is available for Ambulatory Surgery, Imaging, Skilled Nursing/Intermediate Care, and Hospice Facilities. However, these facilities lay outside the scope of this report.

Below is the information available in the financial and utilization reports:

Acute Hospitals

Financial Reports:

Section A: Revenue And Expenses

- A01: Revenue And Expenses Totals
- A02: Inpatient Operating Revenue
- A03: Outpatient Operating Revenue
- A04: LTC Operating Revenue
- A05: Clinic Operating Revenue
- A06: Sub-Acute Operating Revenue
- A07: Operating Expenses
- A08: Non-Operating Revenue And Expenses

Section B: Assets And Liabilities

- B01: Assets And Liabilities Totals
- B02: Current Assets
- B03: Property, Facilities, Equipment Assets
- B04: Intangible And Other Assets
- B05: Liabilities

Acute Hospitals

Utilization Reports:

Section A: Admissions, Days, Beds

- A01: Admissions By Payer
- A02: Days By Payer
- A03: Admissions By Service
- A04: Inpatient Days By Service
- A05: Licensed Beds By Service

Section B: Surgeries And Procedures

- B01: Inpatient Surgeries
- B02: Inpatient Procedures
- B03: Inpatient Surgeries And Procedures - Patients And Hours
- B04: Outpatient Surgeries
- B05: Outpatient Procedures
- B06: Outpatient Surgeries And Procedures - Patients And Hours

Section C: Imaging

C01: CT Tests And MRI Tests

Section D: Other Services

D01: Other Services

- Cardiac Catheterizations
- Dialysis Patients
- Dialysis Treatments
- Lithotripsies

Section E: FTEs

E01: FTEs

Section F: Services Inventory

F01: Services Inventory

F02: Other Services Inventory

Non-Acute Hospitals

Financial Reports:

Section A: Revenue And Expenses

A01: Revenue And Expenses Totals

A02: Inpatient Operating Revenue

A03: Outpatient Operating Revenue

A04: LTC Operating Revenue

A05: Clinic Operating Revenue

A06: Sub-Acute Operating Revenue

A07: Operating Expenses

A08: Non-Operating Revenue And Expenses

Section B: Assets And Liabilities

B01: Assets And Liabilities Totals

B02: Current Assets

B03: Property, Facilities, Equipment Assets

B04: Intangible And Other Assets

B05: Liabilities

Non-Acute Hospitals

Utilization Reports:

Section A: Admissions, Days, Beds

A01: Admissions By Payer

A02: Days By Payer

A03: Admissions By Service

A04: Inpatient Days By Service

A05: Licensed Beds By Service

Section B: Surgeries And Procedures

B01: Inpatient Surgeries

B02: Inpatient Procedures

B03: Inpatient Surgeries And Procedures - Patients And Hours

B04: Outpatient Surgeries

B05: Outpatient Procedures

B06: Outpatient Surgeries And Procedures - Patients And Hours

Section C: Imaging

C01: CT Tests And MRI Tests

Section D: Other Services

D01: Other Services

- Cardiac Catheterizations

- Dialysis Patients

- Dialysis Treatments

- Lithotripsies

Section E: FTEs

E01: FTEs

Section F: Services Inventory

F01: Services Inventory

F02: Other Services Inventory

REPORT ON ACTIVITIES AND OPERATIONS OF THE DEPARTMENT OF HEALTH AND HUMAN SERVICES

DIVISION OF HEALTH CARE FINANCING and POLICY

PURSUANT TO NRS 449.450 through 449.530

October 1, 2009

SUMMARY INFORMATION AND ANALYSES HOSPITALS WITH 100 or MORE BEDS

HOSPITAL INFORMATION

General hospital information concerning the seventeen hospitals with more than 100 beds is presented in EXHIBIT 1. The information includes ownership, bed size, location and other data.

SUMMARY OF CAPITAL IMPROVEMENT REPORTS

Capital improvements cover three areas, major services lines, major expansions and major equipment. The key term in all instances is "major". The statute appears to provide for overlapping reporting, especially for costs of the three major areas. For example, the establishment of a major service line may include major expansion and/or major equipment. A major expansion may include major equipment. In order to avoid duplication of reporting, no costs are reported for the addition of major service lines. The costs for major expansions do not include equipment. Some equipment reported may be part of a major expansion. A threshold of \$500,000 has been established for reporting major equipment additions. Capital improvements that do not meet the reporting thresholds are reported in aggregate and included where available.

Costs reported for projects that are in progress are those incurred during each hospital's fiscal year ending in calendar year 2008. The previous years' costs are also noted in Exhibit 2.

The hospitals reported costs of Capital Improvements as follows: (in millions)

Major Expansions	\$121.9
Major Equipment	56.5
Additions not required to be Reported Separately	<u>166.0</u>
	\$344.5
Total	

See EXHIBIT 2, Pages 1 – 6 for details.

\$97.7 million for the "Additions not required to be Reported Separately" category was for the new Centennial Hills Hospital which opened in January 2008. Centennial did not report last year, so its construction is being reported this year in the third category. This year's 344.5 million

total is down from last year's 493.3 total even taking into account the inclusion of Centennial's 2007 construction costs.

EXPENSES INCURRED FOR PROVIDING COMMUNITY BENEFITS

The total value of community benefits reported was \$760.6¹ million. Subsidized health care costs account for \$662.8¹ million of the total while providing health care professional education totaled \$37.6 million, community health services \$30.6 million and other categories \$29.6 million. The largest amount reported under "Other" was the payment of Nevada property and other taxes by the for-profit facilities totaling \$23.3 million. The \$760.6 million total reflects an increase from calendar year 2007's total of \$623.2 million.

See EXHIBIT 4, Pages 1 – 4 for details.

ANALYSIS OF CORPORATE HOME OFFICE ALLOCATION METHODOLOGIES

The formulas for allocating home office allocations appear reasonable and evenly applied within a company. Additionally, the methodologies for the hospitals that were subject to the "Agreed upon Procedures" engagements were reviewed by the accounting firm of Clifton Gunderson, LLP.

See EXHIBIT 5 for the methodologies.

REVIEW AND COMPARISON OF POLICIES AND PROCEDURES REGARDING DISCOUNTS OFFERED TO PATIENTS AND REVIEW OF POLICIES AND PROCEDURES USED TO COLLECT UNPAID PATIENT ACCOUNTS

EXHIBIT 6 recaps the policies of the hospitals in regard to charity care, discounts and accounts receivable collection policies. Additionally, those hospitals subject to the "Agreed Upon Procedures" engagements were in compliance with offering the 30% discount mandated by NRS 439B.260.

See Summary of Trends Noted from Required or Performed Audits below.

SUMMARY OF TRENDS NOTED FROM REQUIRED OR PERFORMED AUDITS

NRS 439B.440 allows the Director to engage an auditor to conduct an examination to determine whether hospitals are in compliance with provisions of chapter NRS 439B. The statute refers to these engagements as audits. However, in accordance with the American Institute of Certified Public Accountants promulgations, these are "Agreed-Upon Procedures" engagements, not audits. These engagements were performed by Clifton/Gunderson LLP,

¹ UMC's total is net the DSH IGT payment for Clark County, resulting in a \$55 million net increase in Community Benefits

SUMMARY INFORMATION – OVER 100 BEDS
October 1, 2009

Certified Public Accountants & Consultants at all 16 hospitals. The period reviewed was 7/01/05 thru 6/30/07.

The engagement tests hospitals for compliance with NRS 439B.260, 30% discount required for uninsured patients; NRS 439B.410, appropriateness of emergency room patient logs and transfers into or out of the hospital; NRS439B.420, review of contractual arrangements between hospital and physicians or other medical care providers; and review of related party transactions and methodology to allocate them to audited financial statements of the hospital.

NRS 449.520 requires a summary of any trends noted from these “audits” be reported. The only trend is that the hospitals, in terms of their procedures, are in compliance with the provisions of Chapter 439B. Several hospitals did not in all cases comply with their procedures. However, in all cases these appeared to be isolated errors rather than a pattern of non-compliance.

A copy of these audits maybe found at the Cost Containment web site:
<http://dhcfp.state.nv.us/hcfpdata.htm>

Audits are again planned for Winter 2009 / Spring 2010.

CHARGE MASTER AVAILABILITY AT HOSPITALS

A complete current charge master must be available at each hospital during normal business hours for review by the Director, any payor that has a contract with the hospital to pay for services provided by the hospital, any payor that has received a bill from the hospital and any state agency that is authorized to review such information pursuant to NRS 449.490, Sec. 4. This applies to hospitals with 100 or more beds.

No violations of charge master availability have been reported to the Division.

**REPORT ON ACTIVITIES AND OPERATIONS OF THE
DEPARTMENT OF HUMAN RESOURCES
DIVISION OF HEALTH CARE FINANCING and POLICY
PURSUANT TO NRS 449.450 through 449.530
October 1, 2009**

SUMMARY INFORMATION AND ANALYSIS - ALL HOSPITALS

SUMMARY INFORMATION

Hospital Groupings

The acute care hospitals are grouped by the following designations:

- Statewide (totals)
- Clark County Hospitals
- Washoe County/Carson City Hospitals
- Rural Hospitals

The Rehabilitation/Specialty Hospitals and the Psychiatric Hospitals are each addressed as one group. None of these hospitals are located in a rural county.

The CHIA web site contains both financial and utilization information. The following pages summarize this data. None of the state or federally operated facilities reported. They are as follows: Desert Willow Treatment Center, Nellis Air Force Base VA Medical Center, Southern Nevada Adult Mental Health Services, Ioannis A. Lougaris VA Medical Center (in Reno), and Northern Nevada Adult Mental Health Services.

Thirty-four acute care hospitals reported in 2008. The two federal Veterans hospitals did not report, but two new hospitals began reporting. Centennial Hills, a 171 bed facility located in northwest Las Vegas, opened in January 2008. Desert View, opened approximately a 1 hour drive away from Centennial Hills in Pahrump. Desert View Regional Medical Center serves the 30,000 residents of Pahrump and California residents in Inyo County. It opened in April 2006, but did not submit NHQRs until 2008. It has 24 beds and a 24/7 emergency room.

Two hospitals, Incline Village Community (Washoe County at Lake Tahoe) and Boulder City (Clark County at the Arizona border) were re-classified as rural hospitals. Please note that the previous years' numbers were not changed to reflect the new categorizations. The numbers still reflect the then current rural/urban categories. Also, there were 32 hospitals included in the statewide group in 2007 and 2006, 30 in 2005 and 2004, 26 in 2003, and 25 in 2002.

FINANCIAL SUMMARY STATEMENTS

Financial Summary Statements are included in Exhibits 7 and 8. The five year summary statements in Exhibit 7 present condensed Income Statement information and selected utilization information.

Comparative Financial Indicators

In order to compare hospitals across categories, financial indicators are use. The indicators used in this report are Per Adjusted Inpatient Day and Per Adjusted Admission for the following:

- Billed Charges
- Operating Revenue
- Operating Expenses
- Profit (Loss) from Hospital Operations

The adjusted inpatient days and adjusted admissions are calculated using the American Hospital Association formula that converts outpatient revenue to inpatient units. The calculations for the indicators are derived by using information from the Financial Summary Statements for hospitals, billed charges, operating revenue, operating expenses and profit (loss) from hospital operations and dividing those amounts by adjusted inpatient days or adjusted admissions. The amounts calculated due to the conversion are not actual amounts, but are useful for comparisons and trending analyses. Operating revenue represents the amounts paid by patients or their third party payors. The profit (loss) reported is from hospital operations.

Common Size Statements

Common size statements are “vertical analyses” that use percentages to facilitate trend analysis for businesses and business sectors. The components of financial information are presented as percentages of a total within each year presented. In a Statement of Income, the Operating Revenue figure is 100% while Operating Expenses and Income (Loss) are percentages of Operating Revenue.

The five year Comparative Financial Summary statements include the vertical analysis. See EXHIBIT 7, Pages 1 – 4.

ANALYSIS

Comparative Financial Summary – Five Years

Five year trend tables (Exhibit 7) were prepared for the acute care hospitals. The Comparative Financial Summary statements (2004 – 08) report both the financial and the common size statement information (vertical analysis).

The upper section of Exhibit 7 reports billed charges, deductions and operating revenue. Operating revenue is the amount paid by patients (or their third party payer) and is the amount recognized as a hospital's income in accordance with generally accepted accounting principles. The middle section is a condensed "statement of income".

The lower section reports inpatient days and admissions and other patient statistical information along with the calculated "per adjusted inpatient day" and "per adjusted admission" information.

Hospital Profitability

The Comparative Financial Summary, Statewide Totals show that Hospital Net Revenues as a percentage of Total Operating and Non-Operating Revenues have fluctuated somewhat but have remained low. The percentages from EXHIBIT 7, Page 1 are:

<u>2008</u>	<u>2007</u>	<u>2006</u>	<u>2005</u>	<u>2004</u>
-0.8%	1.8%	3.3%	3.2%	1.7%

This past year, the hospitals reported that they collectively lost money. One contributing factor could have been the beginnings of the national and state economic downturns. Another factor could have been the opening of Centennial Hills in January 2008. It reported a loss of 6.6 million dollars and likely took market share from its competitors.

Despite the reporting of overall losses, the nationwide corporate hospitals have been operating successfully. Catholic Healthcare West (CHW) operates the three St. Rose hospitals in Clark County and St. Mary's in Reno. The four combined lost approximately \$10 million in 2008. However, CHW's corporate consolidated balance sheet for the fiscal year ending June 30, 2008 showed that the non-profit corporation's revenues exceeded expenses by \$169,958,000. CHW experienced a 2.0% Net Margin (Net Income ÷ Net Revenue)

Universal Health Systems showed robust profits in CY 2008. All five of the six UHS facilities in Nevada profited. The lone exception was Northern Nevada Medical which reported losses of 156,039. The corporation experienced a 4.0% Net Margin which exceeded the previous year's 3.6%¹.

All three HCA (Hospital Corporation of America) reported that they lost money in Nevada. However, nationwide HCA had an income of 7 billion. HCA is the nation's largest hospital chain owning or managing about 500 hospitals including Mountain View, Southern Hills, and Sunrise in Clark County. HCA has capital assets totaling \$24 billion and in 2007 had a Net Margin of 2.4% which was down from 2007's 3.3%².

¹ Consolidated Balance Sheet (Unaudited)

² Condensed Consolidated Income Statements (For the Years Ended 12-31-08 and 2007)

The American Hospital Association (AHA) reported that community hospitals over the period 1991-2005 had Total Margins (or profit margins) between 4% and 6%³. Nevada hospitals did collectively experience a profit downturn last year to -0.8 percent. Because of time lags in reporting though, national figures for comparison are not yet available for recent calendar years.

In 2008 three rural hospitals made robust profits. Humboldt General (Winnemucca), Northeastern Nevada Regional (Elko), and William Bee Ririe (Ely) respectively made 9.3 million, 24.0 million, and 5.0 million in profits in CY 08. One rural hospital reported significant losses. Mesa View (Mesquite) lost 2.0 million. The other 11 rural hospitals reported net income ranging from losses of \$647,506 to gains of 1.6 million.

County and hospital district taxes are often applied to rural hospitals and contribute to their bottom line. These tax proceeds are not seen separately, but are reported in the Non-operating revenue category. For example, in 2009/2010 Mount Grant anticipates collecting \$ 6,139 in mining taxes and \$181,225 in property taxes for hospital operations

One explanation for these profit and loss patterns is the geographic isolation of these hospitals. The isolation prevents insurers from being able to negotiate among more than one hospital. The most profitable of the rural hospitals was Northeastern which is 288 miles from Reno. Humboldt was closer, but is still 165 miles from Reno. Mesa View is only 77 miles from North Las Vegas.

A second explanation is the payer mix. 57.7% of Northeastern Nevada Regional Hospital's patients had insurance (excluding Medicaid and Medicare) whereas the average for rural hospitals was 34.4%. Meanwhile, Pershing, which lost \$254,092 last year, only had 25.5%. In addition 10 of the 15 rural hospitals are designated as Critical Access Hospitals. This means that Medicare and Medicaid reimburse the facilities at their costs.

AHA reported that over a fifteen year period approximately 25% of community hospitals nationwide lost money annually. In Nevada in CY 08, sixteen of the thirty-four acute care hospitals lost money. In CY 07 fourteen of thirty-two lost money.

In terms of hospital beds, NV had 2.0 per 1,000 population. The national average is 2.7 beds per 1,000 population. The lowest is Washington with 1.7, then New Mexico, Oregon and Utah with 1.8, and California with 1.9⁴.

While Nevada had fewer beds than most states, its occupancy rate was actually lower than average. Nationally, in 2007 the average occupancy rate was 66.47%⁵. Generally though, urban areas have higher occupancy levels than rural ones. Nevada's average occupancy rate in CY 08 was 61.06%. And over the last four years Nevada's occupancy rates have declined

³ Trendwatch Chartbook 2007

⁴ Beds per 1000 data are from AHA Hospital Statistics via the Nevada Hospital Association in 2008.

⁵ Cost Report Data Resources

each year. In CY 07 the rate was 64.63%, in CY 06 the rate was 67.22%, in CY 05 it was 67.56%. Of note, Clark County's occupancy rate was at 72.80% in CY 2005, peaked in CY 06 at 75.99%, and fell in 2007 to 71.67% and further declined in 2008 to 70.55%. This sudden drop could have occurred for several reasons. One likely factor is that in Clark County, the hospitals were increasing capacity to keep up with the phenomenal population growth rate. Unfortunately, since the population boom has ended, there may now be an excess of capacity for acute care hospital beds. At the tail end of the boom Centennial Hills Hospital, a 165 bed acute care hospital, started construction and opened in January of 2008.

Hospitals have high fixed costs for buildings and state of the art equipment. The capacity to treat more patients is available, but occupancy percentages have declined. Additionally, numerous studies show that many consumers are without health benefits and what health dollars they do have no longer go as far as they once did. Hence hospitals are limited in their ability to pass the building and equipment costs on to consumers – especially in the face of competition. Clark County, with the addition of Centennial Hills, now has fourteen (including Boulder City) acute care hospitals. Plus Desert View opened in nearby Pahrump in 2006.

Government and private insurers continually change policies and rates and it is beyond the scope of this report to discuss the many financial changes Nevada hospitals face. However, two high profile CY 2008 changes merit brief discussions. Effective September 8, 2008 Nevada Medicaid cut in-patient hospital rates by 5%. The 5% represents two tenths of a percent of the hospitals' gross revenues. Lastly, effective October 1, 2008, Medicare ceased paying for hospital acquired conditions. If a patient suffers a fall or develops a condition such as a urinary tract infection while hospitalized, Medicare will not reimburse the hospital for the subsequent treatment.

In effect, all 17 Nevada Counties are billed for services provided to their indigent residents. Two funds the counties pay into are the Indigent Accident Fund and the Supplemental Fund. In addition, each facility is unique and may have funding arrangements with special districts, the county, the State, and / or the federal government.

Operating Revenue / Deductions (Contractual Allowances and Bad Debts)

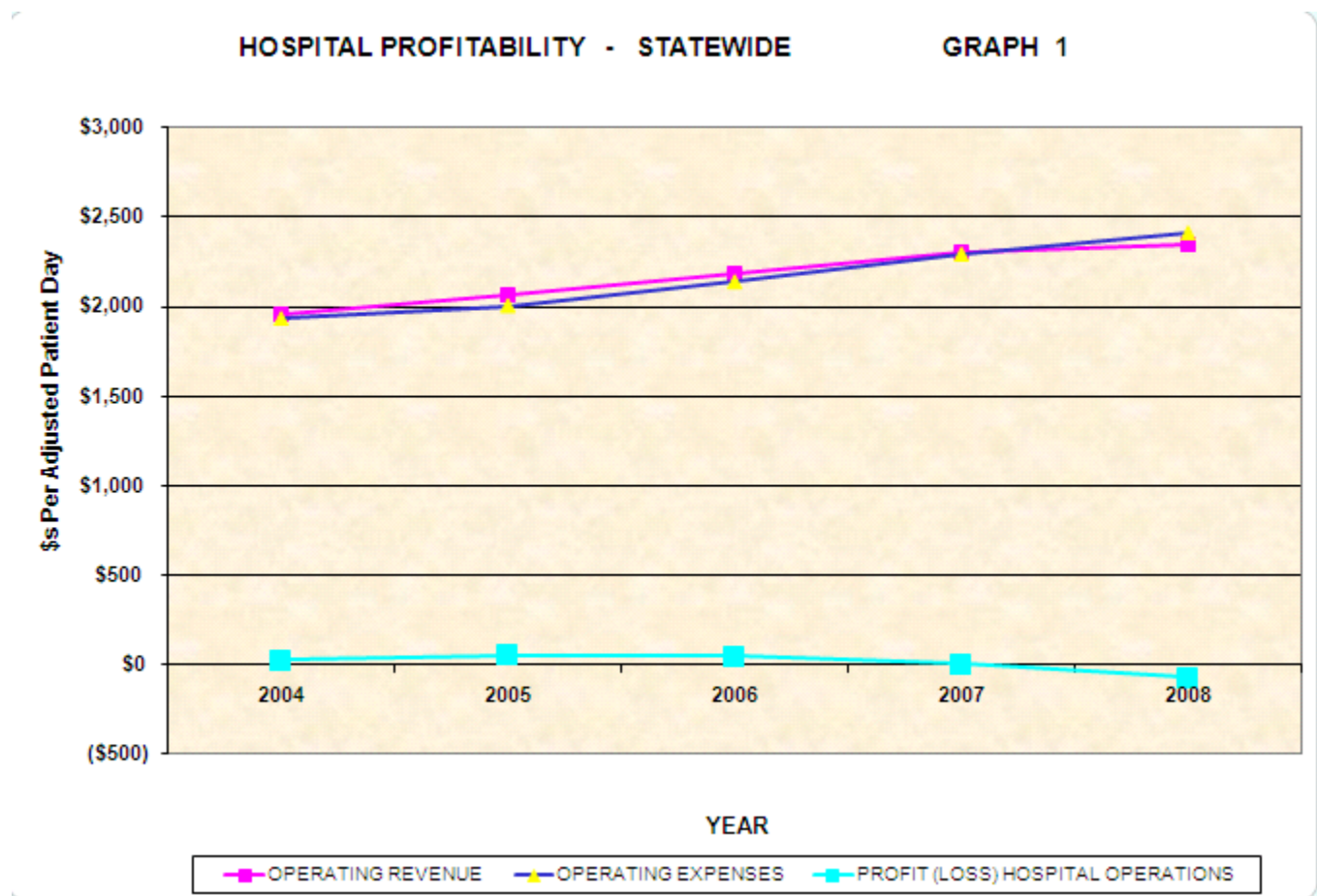
The Billed Charges, when compared to the Deductions (Contractual Allowances and Bad Debts), provide insight into the market competition between health care providers. These percentages reflect the discounting that the hospitals provide to patients, their insurance companies, and other third party payers.

For vertical analysis, the Billed Charges are the 100% figure when comparing Deductions and Operating Revenue. Operating Revenue when included with other operating revenue becomes the 100% figure for statement of income presentation.

Deductions on a statewide basis were 72.5% of billed charges in 2004 and steadily increased to 76.2% in 2008. Clark County hospitals' 2004 Deductions were 74.8% and increased to 78.7% in 2008. Washoe County/Carson City hospitals' Deductions were 68.1% in 2004 and 70.2% in 2008. The rural hospitals' Deductions were 45.2% in 2004 and 50.4% in 2008. Conversely, Operating Revenue on a Statewide basis (the amount patients or their third party payers actually pay) decreased as a percentage of Billed Charges from 27.5% in 2004 to 23.8% in 2008 statewide.

The Clark County hospitals are affected the most by preferred provider contractual arrangements with large employee groups. In general, rural hospitals are not in competition with other hospitals. Also, rural counties normally do not have large employee groups so the hospitals do not have to offer large preferred provider discounts. As a result, operating revenues at rural hospitals are a larger percentage of their billed charges.

EXHIBIT 7, Pages 1 – 4, supports the above information.



Using per adjusted patient day information, the above graph presents the relationship of Operating Revenue, Operating Expenses and Profits (Loss) from Hospital Operations on a

Statewide basis over the five year period. The Financial Indicators presented in EXHIBIT 7 are the basis for this graph.

Operating Revenue Compared with the Consumer Price Index (CPI)⁶

Over the last five years, Total Operating Expenses per Adjusted Inpatient Day and Total Operating Revenue per Adjusted Inpatient Day have risen faster than the CPI and even faster than the medical component of the CPI. From the table it appears as if the national CPI increase in 2008 exceeded the increases for the CPI Medical and the Nevada Operating components. However, last year the CPI peaked in the summer and then fell back 10 points to 210 in December (only a 0.8% increase). This annual report has consistently used the July number for reference. However, using any month's number can lead to misleading results. For example the 2008 summer surge in fuel prices contributed to a temporary CPI spike.

Base # / Percentage	2008	2007	2006	2005	2004
NV Operating Expenses	\$2,414	\$2,295	\$2,140	\$2,005	\$1,934
%	5.2%	7.24%	6.73%	3.67%	7.80%
NV Operating Revenue	\$2,346	\$2,300	\$2,189	\$2,063	\$1,960
%	2.0%	5.1%	6.1%	5.3%	5.2%
CPI Medical	364.0	351.6	337.0	324.1	311.0
%	3.5%	4.3%	4.0%	4.2%	4.5%
CPI (all)	220.0	208.3	203.5	195.4	189.4
%	5.6%	2.5%	4.2%	3.1%	3.0%

SPECIALTY / REHABILITATION HOSPITALS

The Specialty Hospitals reported a Net Operating Revenue of \$43.5 million from a Total Operating Revenue of \$274.5 million or 15.8%. The numbers reflect record revenues and a higher than average profit margin. And all facilities, except Desert Canyon, realized a profit. That is an improvement over 2007 when six of the fourteen facilities lost money led by Desert Canyon's losses of 1.8 million in just a 6 month period. Desert Canyon is Nevada's newest specialty hospital that opened in July 2007. It is owned by a group of Nevada physicians. In 2008 its occupancy percentage was only 29.0% whereas the state average for specialty hospitals was 58.7%. See EXHIBIT 8 pages 5 and 6 for details.

In calendar year 2008 these hospitals reported Net Operating Revenues of \$23.7 million from a Total Operating Revenue of \$226.7 million or 10.5%.

⁶ The CPI is published by the Bureau of Labor Statistics, U. S. Department of Labor.

The trend over the last five years has been as follows:

	2008	2007	2006	2005	2004
Total Operating Revenue	274.5	241.7	226.7	264.6	233.5
Net Operating Revenue	43.5	21.8	23.8	37.2	48.1
Profit Margin	15.8%	9.0%	10.5%	14.1%	20.6%

PSYCHIATRIC HOSPITALS

Overall, the psychiatric hospitals reported healthy profits. As a group they reported a Net Operating Revenue of \$4.8 million from a Total Operating Revenue of \$53.4 million or 9.0%. The only facility losing money is the UHS facility Spring Mountain. As noted under the acute care section, UHS facilities nationwide collectively experienced robust profits in 2008.

Net Operating Revenues are reported below: (from EXHIBIT 8, Page 7)

Facility	<u>CY 08</u> <u>Net Income</u>	<u>CY 07</u> <u>Net Income</u>
Montevista Hospital	2,468,501	2,227,423
Red Rock Behavioral Health	760,891	540,535
Spring Mountain Treatment Center	-1,353,397	-714,783
West Hills Hospital	913,066	901,741
Willow Springs Center	<u>2,932,364</u>	<u>1,798,604</u>
TOTAL	5,721,425	4,753,520

The revenue growth and profit trends over the last five years have been as follows:

	2008	2007	2006	2005	2004
Total Operating Revenue	60.4	53.4	46.9	43.5	37.7
Net Operating Revenue	7.1	4.8	1.6	5.3	2.4
Profit Margin	11.8%	9.0%	3.4%	12.2%	6.4%

UTILIZATION REPORTS (Ten Year Charts and Graphs)

Ten year charts are provided for acute care hospital utilization. The charts include average daily census, occupancy percentages, average length of stay, beds per 1000 population, and admissions. The charts for inpatient days and average licensed beds are on a per 1,000 population basis.

Nevada's population grew from approximately 1.96 million in 1999 to 2.78 million in 2008. The average daily census increased from 2,331 in 1999 to 3,379 in 2008 while the average number of beds per 1,000 population increased from 1.9 in 1999 to 2.0 in 2008. Admissions per 1000

population have declined every year since 2004. The number of Inpatient Days per 1000 also dropped over the last four years. See EXHIBIT 9 for the Ten Year Charts and Graphs.

The ten year trend using the State's estimated population, average daily census, occupancy percentages, average licensed beds per 1,000 population and admission per 1,000 population are noted as follows:

Parameter	2008	1999	Change	Percent Change
Estimated Population	2,783,733	1,961,660	882,073	41.9%
Average Daily Census	3,379	2,331	1,078	45.0%
Occupancy Percentages	61.1%	63.4%	-2.3%	-3.6%
Average Licensed Beds	5,533	3,684	1,429	50.2%
Licensed Beds per 1,000 Population	2.0	1.9	-0.10	-5.0%
Admissions	262,802	184,059	82,203	42.8%
Admissions per 1,000 Population	94.4	93.8	0.6	0.6%

TRENDS

Profit margins of the hospitals have declined over the last three years and this year turned negative. However many facilities are owned by large national corporations that do continue to show profits. The reason that Nevada hospitals report that they are losing money, as shown on page 7, is that the rise in operating expenses per adjusted bed day has, over the last three years, risen more rapidly than the revenue realized by these same bed days.

It is of interest to note that the Total Operating Revenue has risen substantially for the last five years. It rose by 54.2% while the inflation rate was 19.6% and the population growth was 21.4%. By mathematically combining the inflation and population growths, the anticipated revenue growth would have been $1.196 * 1.214 = 1.452$ or the equivalent of 45.2%.

The state's population percentage growth peaked in 2004 with an influx of 94,589 persons (5.84% growth) over 2003. In 2008 there was only an increase 13,397 (0.69% growth). In the interim years the growth ranged from 4.7% to 4.2%. Since 2005 the Admissions per 1000 Residents and the Inpatient Days per 1000 Residents also declined each year. The table below summarizes these three trends.

	2005	2006	2007	2008
Population	1,796,380	1,874,837	1,954,319	1,967,716
% Population Growth	4.72%	4.37%	4.24%	0.69%
Admissions / 1,000	97.7	97.2	94.5	94.4
Inpatient Days / 1,000	458.5	457.4	445.2	444.2

SECTION 2

HOSPITAL INFORMATION

EXHIBIT 1

9/21/2009

EXHIBIT 1

**NEVADA HOSPITALS
HOSPITAL INFORMATION
October 1, 2009**

CLARK COUNTY HOSPITALS**HCA Inc. Hospitals**

MountainView Hospital
Southern Hills Hospital & Medical Center
Sunrise Hospital & Medical Center

Universal Health Systems Hospitals (UHS)

Centennial Hills Hospital & Medical Center
Desert Springs Hospital
Spring Valley Hospital Medical Center
Summerlin Hospital Medical Center
Valley Hospital Medical Center

Catholic Healthcare West

Saint Rose Dominican Hospital
- Rose de Lima Campus
- San Martin Campus
- Siena Campus

IASIS Hospital

North Vista Hospital

Clark County Owned Hospital

University Medical Center

WASHOE COUNTY/CARSON CITY HOSPITALS**Carson Tahoe Regional Healthcare**

Carson Tahoe Regional Medical Center

UHS

Northern Nevada Medical Center

Catholic Health Care West

St. Mary's Regional Medical Center

Renown Health

Renown Regional Medical Center

Data as of	Number of Beds	Type of Ownership	Does the Hospital Have or Offer			Is the Hospital a Sole Provider of Some Services in the Service Area	
			Community Benefits Coordinator	Charitable Foundation	Conduct Teaching Research	Trauma	Other
12/31/08	235	For-Profit	No	No	Yes	No	No
12/31/08	139	For-Profit	No	No	Yes	No	No
12/31/08	701	For-Profit	No	No	Yes	Level II	Yes
12/31/08	171	For-Profit	Yes	No	No	No	No
12/31/08	286	For-Profit	No	No	No	No	No
12/31/08	210	For-Profit	Yes	No	No	No	No
12/31/08	281	For-Profit	No	No	No	No	Yes
12/31/08	404	For-Profit	No	No	Yes	No	No
---	---	---	---	---	---	---	---
6/30/08	138	Not-for-Profit	Yes	Yes	Yes	No	No
6/30/08	141	Not-for-Profit	Yes	Yes	Yes	No	No
6/30/08	214	Not-for-Profit	Yes	Yes	Yes	No	No
9/30/08	185	For-Profit	Yes	No	No	No	No
6/30/08	541 (1)	Not-for Profit	No	Yes	Yes	Level I	Yes
12/31/08	172	Not-for Profit	No	Yes	No	No	Yes
12/31/08	100	For-Profit	No	No	No	No	No
6/30/08	380	Not-for-Profit	Yes	Yes	Yes	No	No
6/30/08	808	Not-for-Profit	There is a committee	Yes	Yes	Level II	Yes

(1) The Bureau of Health Care Quality and Compliance reclassified 34 of UMC's beds as rehabilitation beds within a separate facility

SECTION 3

CAPITAL IMPROVEMENTS

RECAP
MAJOR EXPANSIONS
MAJOR EQUIPMENT

EXHIBIT 2

Page 1
Pages 2 – 4
Pages 5 - 6

**NEVADA HOSPITALS
CAPITAL IMPROVEMENT REPORT
RECAP**

October 1, 2009

CLARK COUNTY HOSPITALS

HCA Inc. Hospitals

MountainView Hospital

Southern Hills Hospital & Medical Center

Sunrise Hospital & Medical Center

Universal Health Systems Hospitals (UHS)

Centennial Hills Hospital & Medical Center (1)

Desert Springs Hospital

Spring Valley Hospital Medical Center

Summerlin Hospital Medical Center

Valley Hospital Medical Center

Catholic Healthcare West

Saint Rose Dominican Hospitals

Rose de Lima Campus

San Martin Campus

Siena Campus

IASIS Hospital

North Vista Hospital

Clark County Owned Hospital

University Medical Center

TOTAL CLARK COUNTY HOSPITALS

WASHOE COUNTY/CARSON CITY HOSPITALS

Carson Tahoe Regional Healthcare

Carson Tahoe Regional Medical Center

UHS

Northern Nevada Medical Center

Catholic Healthcare West

St. Mary's Regional Medical Center

Renown Health

Renown Regional Medical Center

**TOTAL WASHOE COUNTY /
CARSON CITY HOSPITALS**

GRAND TOTALS

Data as of	MAJOR EXPANSIONS Pages 2 - 4	MAJOR EQUIPMENT Pages 5 - 6	CAPITAL ADDITIONS NOT REQUIRED TO BE SEPARATELY REPORTED	CAPITAL IMPROVEMENTS TOTAL
12/31/08	\$0	\$4,700,225	\$2,833,473	\$7,533,698
12/31/08	\$0	\$0	\$1,524,575	\$1,524,575
12/31/08	\$0	\$6,363,876	\$3,404,114	\$9,767,990
12/31/08	\$3,934,213	\$1,570,425	\$111,093,433	\$116,598,071
12/31/08	\$1,646,386	\$522,236	\$4,918,866	\$7,087,488
12/31/08	\$3,011,837	\$0	\$1,806,879	\$4,818,716
12/31/08	\$38,000,000	\$3,794,400	\$2,605,800	\$44,400,200
12/31/08	\$10,361,674	\$0	\$1,037,459	\$11,399,133
6/30/08	\$0	\$2,007,247	\$1,785,909	\$3,793,156
6/30/08	\$0	\$0	\$1,046,126	\$1,046,126
6/30/08	\$3,556,656	\$2,606,631	\$6,360,626	\$12,523,913
9/30/08	\$2,055,258	\$2,213,986	\$2,094,747	\$6,363,991
6/30/08	\$6,718,684	\$958,991	\$3,355,520	\$11,033,195
	\$69,284,708	\$24,738,017	\$143,867,527	\$237,890,252
12/31/08	\$1,386,760	\$0	\$3,198,223	\$4,584,983
12/31/08	\$0	\$1,248,121	\$3,725,532	\$4,973,653
6/30/08	\$9,651,294	\$0	\$632,019	\$10,283,313
6/30/08	\$41,625,221	\$30,525,017	\$14,595,761	\$86,745,999
	\$52,663,275	\$31,773,138	\$22,151,535	\$106,587,948
	\$121,947,983	\$56,511,155	\$166,019,062	\$344,478,200

(1) Centennial Hills opened in January 2008. It did not report last year. But its prior year costs are included this year in the "not required to be separately reported" column

9/21/2009

EXHIBIT 2

Page 3 of 6

**NEVADA HOSPITALS
CAPITAL IMPROVEMENTS
MAJOR EXPANSIONS
October 1, 2009**

Data as of	DESCRIPTION	In Progress (IP) Completed (C)	MAJOR EXPANSIONS COSTS INCURRED		
			THIS PERIOD	PREVIOUS PERIODS	To DATE
12/31/08	Parking Lot Development	C	\$2,132,381		\$2,132,381
	Surgical Service Expansion/Renovation	IP	\$8,229,293	\$3,471,815	\$11,701,108
	TOTAL		\$10,361,674	\$3,471,815	\$13,833,489
6/30/08	NONE		\$0	\$0	\$0
			\$0	\$0	\$0
			\$0	\$0	\$0
6/30/08	NONE		\$0	\$0	\$0
			\$0	\$0	\$0
			\$0	\$0	\$0
6/30/08	Level III NICU	C	\$3,556,656	\$0	\$3,556,656
	TOTAL		\$3,556,656	\$0	\$3,556,656
9/30/08	New Cath Lab	C	\$886,460		\$886,460
	MRI Buildout	C	\$1,168,798	\$2,117,248	\$3,286,046
	TOTAL		\$2,055,258	\$2,117,248	\$4,172,506
6/30/08	NE Tower (construction, soft costs, etc)	C	\$6,718,684	\$54,158,443	\$60,877,127
	TOTAL		\$6,718,684	\$54,158,443	\$60,877,127
	TOTAL (this page)		\$22,692,272	\$59,747,506	\$82,439,778

CLARK COUNTY HOSPITALS - continued

Universal Health Systems Hospitals (UHS) - con't
Valley Hospital Medical Center

Catholic Healthcare West

Saint Rose Dominican Hospitals
Rose de Lima Campus

San Martin Campus

Siena Campus

IASIS Hospital

North Vista Hospital

Clark County Owned Hospital

University Medical Center

9/21/2009

EXHIBIT 2

Page 4 of 6

NEVADA HOSPITALS
CAPITAL IMPROVEMENTS
MAJOR EXPANSIONS
October 1, 2009

WASHOE COUNTY/CARSON CITY HOSPITALS

Carson Tahoe Regional Healthcare

Carson Tahoe Regional Medical Center

UHS

Northern Nevada Medical Center

Catholic Healthcare West

St. Mary's Regional Medical Center

Renown Health

Renown Regional Medical Center

Data as of	MAJOR EXPANSIONS				
	DESCRIPTION	In Progress (IP) Completed (C)	COSTS INCURRED		
			THIS PERIOD	PREVIOUS PERIODS	To DATE
12/31/08	Tenant Improvements Medical Ofc Bldg	C	638,000		638,000
	Tenant Improvements/Equipment MICA	C	748,760		748,760
	TOTAL		\$1,386,760	\$0	\$1,386,760
12/31/08	None reported		\$0		\$0
	TOTAL		\$0	\$0	\$0
6/30/08	Emergency Room Expansion	C	\$9,651,294	\$1,317,591	\$10,968,885
	TOTAL		\$9,651,294	\$1,317,591	\$10,968,885
6/30/08	254 bed patient tower and parking	C	\$39,617,437	\$271,225,616	\$310,843,053
	Upgrade Sierra Tower's patient areas	C	\$2,007,784		
	TOTAL		\$41,625,221	\$271,225,616	\$310,843,053
	TOTAL (this page)		\$52,663,275	\$272,543,207	\$323,198,698
	MAJOR EXPANSIONS TOTALS (all 3 pages)		\$121,947,983	\$441,921,752	\$561,861,951

**NEVADA HOSPITALS
CAPITAL IMPROVEMENTS
MAJOR EQUIPMENT
October 1, 2009**

CLARK COUNTY HOSPITALS**HCA Hospitals**

MountainView Hospital

Southern Hills Hospital & Medical Center

Sunrise Hospital & Medical Center

Universal Health Systems Hospitals (UHS)

Centennial Hills Hospital & Medical Center

Desert Springs Hospital

Spring Valley Hospital Medical Center

Summerlin Hospital Medical Center

Valley Hospital Medical Center

Catholic Healthcare WestSaint Rose Dominican Hospitals
Rose de Lima Campus

San Martin Campus

Siena Campus

Data as of	MAJOR EQUIPMENT		
	DESCRIPTION	COSTS INCURRED PREVIOUS PERIODS	COSTS INCURRED THIS PERIOD
12/31/08	Patient monitors MRI Equipment Boiler for heat and sterilization Total Major Equipment	4,329,228	\$3,327,090 \$723,803 \$649,332 \$4,700,225
12/31/08	None Total Major Equipment		\$0 \$0
12/31/08	Information Systems Infrastructure Automated Line Chemistry Systems Endoscopic Equipment Pharmacy Automation Patient Monitoring System Ultrasound/Fetal Monitoring System Total Major Equipment		\$855,651 \$1,627,025 \$1,231,922 \$1,151,998 \$950,283 \$546,997 \$6,363,876
12/31/08	X-ray system Aquilion 64 CT Scanner Prior year purchases not reported last year Total Major Equipment	\$7,123,841	\$539,061 \$1,031,364 \$0 \$1,570,425
12/31/08	Special Procedures Bi-Plane Total Major Equipment		\$522,236 \$522,236
12/31/08	None Total Major Equipment		\$0 \$0
12/31/08	Aquilion 64-slice CT Scanner Robotics equip., misc. projects Elevator additions Total Major Equipment	\$280,100 \$446,700	\$960,000 \$2,100,000 \$734,400 \$3,794,400
12/31/08	None in excess of threshold Total Major Equipment		\$0 \$0
6/30/08	GE Packs Omniceil Total Major Equipment		\$771,025 \$1,236,222 \$2,007,247
6/30/08	None in excess of threshold Total Major Equipment		\$0 \$0
6/30/08	IT Telecom Infrastructure Upgrade Robotic Arm Total Major Equipment		\$956,631 \$1,650,000 \$2,606,631

**NEVADA HOSPITALS
CAPITAL IMPROVEMENTS
MAJOR EQUIPMENT
October 1, 2009**

CLARK COUNTY HOSPITALS - continued**IASIS Hospital**

North Vista Hospital

Clark County Owned Hospital

University Medical Center

WASHOE COUNTY/CARSON CITY HOSPITALS**Carson Tahoe Regional Healthcare**

Carson Tahoe Regional Medical Center

UHS

Northern Nevada Medical Center

Catholic Healthcare West

St. Mary's Regional Medical Center

Renown Health

Renown Regional Medical Center

Data as of	MAJOR EQUIPMENT		
	DESCRIPTION	COSTS INCURRED PREVIOUS PERIODS	COSTS INCURRED THIS PERIOD
9/30/08	MRI Achieva 1.5T System Cath - Allura XPER FD20 Total Major Equipment		\$1,177,531 \$1,036,455 \$2,213,986
6/30/08	Cat Scan Unit Total Major Equipment		\$958,991 \$958,991
12/31/08	None in excess of threshold Total Major Equipment		\$0 \$0
12/31/08	Diagnostic Imaging Wound care - hyperbaric chamber Total Major Equipment		\$738,823 \$509,298 \$1,248,121
6/30/08	None in excess of threshold Total Major Equipment		\$0 \$0
6/30/08	Magnetic Resonance Imagery System 64 Slice Computed Tomography Scanner da Vinci S HD Robotic Surgical System Innova 3100 Cath Lab System Medication Dispenser System Anesthesia Machines Patient Beds Surgical Rooms Central Patient Monitoring System GE Digital Portable Imaging System GE Digital Radiology System Siemens Imaging System Mobile X-Ray Neuro-OPMI Microscopes OR Control System Surgical and Specialty Tables Washers/Dryers/Sterilizers Epic Electronic Medical Record Total Major Equipment		\$1,493,918 \$1,232,122 \$1,654,000 \$1,724,997 \$1,393,761 \$745,667 \$1,719,204 \$2,332,526 \$3,295,500 \$597,000 \$798,000 \$988,905 \$1,030,751 \$698,561 \$1,384,058 \$887,050 \$1,592,009 \$6,956,988 \$30,525,017
MAJOR EQUIPMENT TOTALS (both pages)			12,179,869 \$56,511,155

SECTION 4

MAJOR SERVICE LINES

EXHIBIT 3

9/21/2009

EXHIBIT 3

**NEVADA HOSPITALS
CAPITAL IMPROVEMENTS
MAJOR SERVICE LINES ADDED
October 1, 2009**

CLARK COUNTY HOSPITALS**HCA Inc. Hospitals**

MountainView Hospital
Southern Hills Hospital & Medical Center
Sunrise Hospital & Medical Center

Universal Health Systems Hospitals (UHS)

Centennial Hills Hospital & Medical Center
Desert Springs Hospital
Spring Valley Hospital Medical Center
Summerlin Hospital Medical Center
Valley Hospital Medical Center

Catholic Healthcare West

Saint Rose Dominican Hospitals
Rose de Lima Campus
San Martin Campus
Siena Campus

IASIS Hospital

North Vista Hospital

Clark County Owned Hospital

University Medical Center

WASHOE COUNTY/CARSON CITY HOSPITALS**Carson Tahoe Regional Healthcare**

Carson Tahoe Regional Medical Center

UHS

Northern Nevada Medical Center

Catholic Healthcare West

St. Mary's Regional Medical Center

Renown Health

Renown Regional Medical Center

Data as of	MAJOR SERVICE LINES ADDED	
	DESCRIPTION	
12/31/08	- No major service lines added	
12/31/08	Neurosurgery	
12/31/08	- No major service lines added	
12/31/08	The entire hospital opened in January 2008	
12/31/08	- No major service lines added	
12/31/08	Open Heart Program Stroke Certification	
12/31/08	Robotic Surgery	
12/31/08	- No major service lines added	
6/30/08	- No major service lines added	
6/30/08	- No major service lines added	
6/30/08	Level III NICU	
9/30/2008	- No major service lines added	
6/30/08	- No major service lines added	
12/31/08	- No major service lines added	
12/31/08	Wound care / Hyperbaric Chamber (HBOC)	
6/30/08	- No major service lines added	
6/30/08	- No major service lines added	

An inventory of services provided by all Nevada hospitals is included in the Summary Financial Report - 2 located on the website as noted in the report. The inventory list is provided with this report as EXHIBIT 4.

SECTION 5

COMMUNITY BENEFITS

EXHIBIT 4

RECAP

Page 1

SUBSIDIZED HEALTH CARE

Page 2

HEALTH CARE PROFESSIONAL EDUCATION

Page 3

COMMUNITY HEALTH SERVICES

Page 3

OTHER CATEGORIES

Page 4

NEVADA HOSPITALS COMMUNITY BENEFITS RECAP October 1, 2009						
CLARK COUNTY HOSPITALS	Data as of	SUBSIDIZED HEALTH CARE Page 2	HEALTH CARE PROFESSIONAL EDUCATION Page 3	COMMUNITY HEALTH SERVICES Page 3	OTHER CATEGORIES Page 4	TOTAL COMMUNITY BENEFITS
HCA Inc. Hospitals						
MountainView Hospital	12/31/08	\$36,005,693	\$139,040	\$427,692	\$3,298,266	\$39,870,691
Southern Hills Hospital & Medical Center	12/31/08	\$17,093,014	\$192,379	\$328,380	\$2,059,814	\$19,673,587
Sunrise Hospital & Medical Center	12/31/08	\$109,795,172	\$2,137,105	\$2,574,310	\$7,258,990	\$121,765,577
Universal Health Systems Hospitals (UHS)						
Centennial Hills Hospital & Medical Center	12/31/08	\$14,736,119	\$574	\$292,946	\$2,243,615	\$17,273,254
Desert Springs Hospital	12/31/08	\$13,821,140	\$443,663	\$440,352	\$2,168,380	\$16,873,535
Spring Valley Hospital Medical Center	12/31/08	\$19,508,843	\$1,045	\$397,530	\$1,822,765	\$21,730,183
Summerlin Hospital Medical Center	12/31/08	\$19,922,736	\$28,339	\$455,794	\$3,625,360	\$24,032,229
Valley Hospital Medical Center	12/31/08	\$31,618,193	\$4,181,299	\$471,671	\$3,053,739	\$39,324,902
Catholic Healthcare West						
Saint Rose Dominican Hospitals						
Rose de Lima Campus	6/30/08	\$25,435,090	\$188,273	\$1,550,722	\$412,813	\$27,586,898
San Martin Campus	6/30/08	\$31,674,093	\$119,154	\$919,783	\$281,969	\$32,994,999
Siena Campus	6/30/08	\$37,710,579	\$478,338	\$1,878,388	\$666,050	\$40,733,355
IASIS Hospital						
North Vista Hospital	9/30/08	\$17,361,321	\$134,594	\$666,010	\$562,313	\$18,724,238
Clark County Owned Hospital						
University Medical Center	6/30/08	\$115,876,736	\$26,733,511	\$6,837,109	\$259,852 (1)	\$149,707,208
TOTAL CLARK COUNTY HOSPITALS		\$475,822,610	\$34,776,740	\$16,947,741	\$25,470,311	\$553,017,402
WASHOE COUNTY/CARSON CITY HOSPITALS						
Carson Tahoe Regional Healthcare						
Carson Tahoe Regional Medical Center	12/31/08	\$31,880,092	\$156,615	\$1,984,000	\$651,792	\$34,672,499
UHS						
Northern Nevada Medical Center	12/31/08	\$11,018,669	\$82,911	\$342,787	\$901,592	\$12,345,959
Catholic Healthcare West						
St. Mary's Regional Medical Center	6/30/08	\$43,906,053	\$437,506	\$3,029,463	\$1,153,845	\$48,526,867
Renown Health						
Renown Regional Medical Center	6/30/08	\$100,157,145	\$2,115,530	\$8,328,495	\$1,396,782	\$111,997,952
TOTAL WASHOE COUNTY/ CARSON CITY HOSPITALS		\$186,961,959	\$2,792,562	\$13,684,745	\$4,104,011	\$207,543,277
GRAND TOTALS		\$662,784,569	\$37,569,302	\$30,632,486	\$29,574,322 (1)	\$760,560,679

(1) UMC's total is net the DSH IGT payment for Clark County, resulting in a \$75 million net increase in Community Benefits

NEVADA HOSPITALS COSTS OF COMMUNITY BENEFITS SUBSIDIZED HEALTH CARE October 1, 2009		SUBSIDIZED HEALTH CARE						
	Data as of	Uncompensated Cost Report	Uncompensated Medicare	Uncompensated Other	Less DSH & Other Payments		Less Costs Reported Elsewhere	TOTAL
CLARK COUNTY HOSPITALS								
HCA Inc. Hospitals								
MountainView Hospital	12/31/08	\$15,897,029	\$20,981,654	\$39,026	\$331,069		\$580,947	\$36,005,693
Southern Hills Hospital & Medical Center	12/31/08	\$9,803,273	\$8,089,738	\$0	\$634,504		\$165,493	\$17,093,014
Sunrise Hospital & Medical Center	12/31/08	\$93,879,206	\$29,252,089	\$843,506	\$8,490,547		\$5,689,082	\$109,795,172
Universal Health Systems Hospitals (UHS)								
Centennial Hills Hospital & Medical Center	12/31/08	\$9,834,612	\$5,862,349	\$0	\$788,441		\$172,401	\$14,736,119
Desert Springs Hospital	12/31/08	\$12,748,314	\$3,052,187	\$0	\$1,609,795		\$369,566	\$13,821,140
Spring Valley Hospital Medical Center	12/31/08	\$15,604,332	\$5,166,578	\$0	\$927,602		\$334,465	\$19,508,843
Summerlin Hospital Medical Center	12/31/08	\$10,414,579	\$10,090,641	\$0	\$226,268		\$356,216	\$19,922,736
Valley Hospital Medical Center	12/31/08	\$30,194,505	\$6,829,526	\$0	\$1,096,075		\$4,309,763	\$31,618,193
Catholic Healthcare West								
Saint Rose Dominican Hospitals								
Rose de Lima Campus	6/30/08	\$17,532,837	\$9,460,015	\$17,461	\$1,035,077		\$540,146	\$25,435,090
San Martin Campus	6/30/08	\$17,634,556	\$14,611,219	\$11,419	\$375,392		\$207,709	\$31,674,093
Siena Campus	6/30/08	\$20,816,459	\$17,721,221	\$84,780	\$309,964		\$601,917	\$37,710,579
IASIS Hospital								
North Vista Hospital	9/30/08	\$17,301,921	\$3,388,314	\$0	\$2,662,904		\$666,010	\$17,361,321
Clark County Owned Hospital								
University Medical Center	6/30/08	\$203,992,522	\$18,502,151	\$13,200,614	\$85,818,401	(1)	\$34,000,150	\$115,876,736
TOTAL CLARK COUNTY HOSPITALS		\$465,819,533	\$147,145,333	\$14,196,806	\$103,517,598		\$47,821,464	\$475,822,610
WASHOE COUNTY/CARSON CITY HOSPITALS								
Carson Tahoe Regional Healthcare								
Carson Tahoe Regional Medical Center	12/31/08	\$16,361,317	\$16,528,306	\$275,524	\$986,349		\$298,706	\$31,880,092
UHS								
Northern Nevada Medical Center	12/31/08	\$6,431,727	\$4,997,495	\$0	\$379,220		\$31,333	\$11,018,669
Catholic Healthcare West								
St. Mary's Regional Medical Center	6/30/08	\$23,464,653	\$19,578,821	\$2,753,843	\$438,781		\$1,452,483	\$43,906,053
Washoe Health System								
Renown Regional Medical Center	6/30/08	\$87,281,675	\$33,335,554	\$6,310,590	\$16,490,743		\$10,279,931	\$100,157,145
TOTAL WASHOE COUNTY/ CARSON CITY HOSPITALS		\$133,539,372	\$74,440,176	\$9,339,957	\$18,295,093		\$12,062,453	\$186,961,959
GRAND TOTALS		\$599,358,905	\$221,585,509	\$23,536,763	\$121,812,691	(1)	\$59,883,917	\$662,784,569 (1)

(1) UMC's total is net the DSH IGT payment for Clark County, resulting in a \$75 million net increase in Community Benefits

NEVADA HOSPITALS COSTS OF COMMUNITY BENEFITS HEALTH CARE PROFESSIONAL EDUCATION and COMMUNITY HEALTH SERVICES October 1, 2009		PROFESSIONAL EDUCATION				COMMUNITY HEALTH SERVICES			
	Data as of	EDUCATION PHYSICIANS	NURSING	OTHERS	TOTAL	EDUCATION	CLINICAL	SUPPORT	TOTAL
CLARK COUNTY HOSPITALS									
HCA Inc. Hospitals									
MountainView Hospital	12/31/08	\$0	\$11,184	\$127,856	\$139,040	\$71,311	\$6,120	\$350,261	\$427,692
Southern Hills Hospital & Medical Center	12/31/08	\$0	\$192,379	\$0	\$192,379	\$119,660	\$14,340	\$194,380	\$328,380
Sunrise Hospital & Medical Center	12/31/08	\$1,754,733	\$11,765	\$370,607	\$2,137,105	\$43,124	\$0	\$2,531,186	\$2,574,310
Universal Health Systems Hospitals (UHS)									
Centennial Hills Hospital & Medical Center	12/31/08	\$0	\$0	\$574	\$574	\$82,155	\$35,100	\$175,691	\$292,946
Desert Springs Hospital	12/31/08	\$0	\$432,213	\$11,450	\$443,663	\$0	\$46,098	\$394,254	\$440,352
Spring Valley Hospital Medical Center	12/31/08	\$0	\$0	\$1,045	\$1,045	\$47,616	\$0	\$349,914	\$397,530
Summerlin Hospital Medical Center	12/31/08	\$0	\$28,339	\$0	\$28,339	\$53,481	\$46,098	\$356,215	\$455,794
Valley Hospital Medical Center	12/31/08	\$3,863,685	\$317,614	\$0	\$4,181,299	\$3,559	\$15,974	\$452,138	\$471,671
Catholic Healthcare West									
Saint Rose Dominican Hospitals									
Rose de Lima Campus	6/30/08	\$93,399	\$56,155	\$38,719	\$188,273	\$551,042	\$527,980	\$471,700	\$1,550,722
San Martin Campus	6/30/08	\$79,142	\$0	\$40,012	\$119,154	\$534,267	\$231,692	\$153,824	\$919,783
Siena Campus	6/30/08	\$181,036	\$160,880	\$136,422	\$478,338	\$1,024,456	\$396,260	\$457,672	\$1,878,388
IASIS Hospital									
North Vista Hospital	9/30/08	\$0	\$8,025	\$126,569	\$134,594	\$0	\$0	\$666,010	\$666,010
Clark County Owned Hospital									
University Medical Center	6/30/08	\$25,817,995	\$50,000	\$865,516	\$26,733,511	\$567,900	\$2,214,410	\$4,054,799	\$6,837,109
TOTAL CLARK COUNTY HOSPITALS		\$31,789,990	\$1,268,554	\$1,718,196	\$34,776,740	\$3,016,416	\$3,498,972	\$10,432,353	\$16,947,741
WASHOE COUNTY/CARSON CITY HOSPITALS									
Carson Tahoe Regional Healthcare									
Carson Tahoe Regional Medical Center	12/31/08	\$0	\$98,349	\$58,266	\$156,615	\$1,125,663	\$309,968	\$548,369	\$1,984,000
UHS									
Northern Nevada Medical Center	12/31/08	\$0	\$82,911	\$0	\$82,911	\$311,454	\$0	\$31,333	\$342,787
Catholic Healthcare West									
St. Mary's Regional Medical Center	6/30/08	\$8,344	\$271,529	\$157,633	\$437,506	\$1,563,576	\$604,997	\$860,890	\$3,029,463
Washoe Health System									
Renown Regional Medical Center	6/30/08	\$1,829,284	\$280,796	\$5,450	\$2,115,530	\$110,638	\$6,529,435	\$1,688,422	\$8,328,495
TOTAL WASHOE COUNTY/ CARSON CITY HOSPITALS		\$1,837,628	\$733,585	\$221,349	\$2,792,562	\$3,111,331	\$7,444,400	\$3,129,014	\$13,684,745
GRAND TOTALS		\$33,627,618	\$2,002,139	\$1,939,545	\$37,569,302	\$6,127,747	\$10,943,372	\$13,561,367	\$30,632,486

NEVADA HOSPITALS COSTS OF COMMUNITY BENEFITS OTHER CATEGORIES October 1, 2009		OTHER CATEGORIES					
	Data as of	Nevada Taxes Sales/Property Etc.	Financial Contributions	Advocacy for Improved Health	Other Community Activities/Coalitions	Other	TOTAL OTHER CATEGORIES
CLARK COUNTY HOSPITALS							
HCA Inc. Hospitals							
MountainView Hospital	12/31/08	\$3,106,488	\$159,533	\$0	\$32,245	\$0	\$3,298,266
Southern Hills Hospital & Medical Center	12/31/08	\$1,924,547	\$33,120	\$0	\$74,906	\$27,241	\$2,059,814
Sunrise Hospital & Medical Center	12/31/08	\$6,147,318	\$1,052,330	\$0	\$3,299	\$56,043	\$7,258,990
Universal Health Systems Hospitals (UHS)							
Centennial Hills Hospital & Medical Center	12/31/08	\$2,108,102	\$87,792	\$0	\$2,721	\$45,000	\$2,243,615
Desert Springs Hospital	12/31/08	\$2,122,658	\$45,722	\$0	\$0	\$0	\$2,168,380
Spring Valley Hospital Medical Center	12/31/08	\$1,585,634	\$80,602	\$0	\$156,529	\$0	\$1,822,765
Summerlin Hospital Medical Center	12/31/08	\$3,497,216	\$250	\$0	\$53,481	\$74,413.00	\$3,625,360
Valley Hospital Medical Center	12/31/08	\$2,878,266	\$142,773	\$0	\$0	\$32,700	\$3,053,739
Catholic Healthcare West							
Saint Rose Dominican Hospitals							
Rose de Lima Campus	6/30/08	\$1,349	\$201,334	\$4,304	\$114,859	\$90,967	\$412,813
San Martin Campus	6/30/08	\$7,178	\$118,667	\$1,672	\$67,269	\$87,183	\$281,969
Siena Campus	6/30/08	\$45,103	\$260,939	\$8,486	\$187,744	\$163,778	\$666,050
IASIS Hospital							
North Vista Hospital	9/30/08	\$560,813	\$1,500	\$0	\$0	\$0	\$562,313
Clark County Owned Hospital							
University Medical Center	6/30/08	\$0	\$25,282	\$1,931	\$66,000	\$166,639	\$259,852
TOTAL CLARK COUNTY HOSPITALS		\$21,876,570	\$2,122,052	\$16,393	\$756,332	\$698,964	\$25,470,311
WASHOE COUNTY/CARSON CITY HOSPITALS							
Carson Tahoe Regional Healthcare							
Carson Tahoe Regional Medical Center	12/31/08	\$311,756	\$339,836	\$0	\$200	\$0	\$651,792
UHS							
Northern Nevada Medical Center	12/31/08	\$899,092	\$2,500	\$0	\$0	\$0	\$901,592
Catholic Healthcare West							
St. Mary's Regional Medical Center	6/30/08	\$147,264	\$702,809	\$10,707	\$204,010	\$89,055	\$1,153,845
Washoe Health System							
Renown Regional Medical Center	6/30/08	\$64,840	\$931,122	\$0	\$75,261	\$325,559	\$1,396,782
TOTAL WASHOE COUNTY/ CARSON CITY HOSPITALS		\$1,422,952	\$1,976,267	\$10,707	\$279,471	\$414,614	\$4,104,011
GRAND TOTALS		\$23,299,522	\$4,098,319	\$27,100	\$1,035,803	\$1,113,578	\$29,574,322

SECTION 6

HOME OFFICE ALLOCATION

EXHIBIT 5

**NEVADA HOSPITALS
HOME OFFICE ALLOCATION
October 1, 2009**

CLARK COUNTY HOSPITALS

HCA Inc. Hospitals

MountainView Hospital
Southern Hills Hospital & Medical Center
Sunrise Hospital & Medical Center
*(MV & SH's Agreed Upon Procedures
Audts 7/1/05-6/30/07 say the fee is 1%)*

Universal Health Systems Hospitals (UHS)

Centennial Hills Hospital & Medical Center
Desert Springs Hospital
Spring Valley Hospital Medical Center
Summerlin Hospital Medical Center
Valley Hospital Medical Center

Catholic Healthcare West

Saint Rose Dominican Hospitals
Rose de Lima Campus
San Martin Campus
Siena Campus

IASIS Hospital

North Vista Hospital

Clark County Owned Hospital

University Medical Center

WASHOE COUNTY/CARSON CITY HOSPITALS

Carson Tahoe Regional Healthcare

Carson Tahoe Regional Medical Center

UHS

Northern Nevada Medical Center

Catholic Healthcare West

St. Mary's Regional Medical Center

Renown Health

Renown Regional Medical Center

BASIC FORMULA FOR ALLOCATION

* The fee is based on 6.5% of net revenues. General insurance, payroll and related taxes, workers comp, employee benefits, construction and other hospital specific costs are based on hospital specific expenditures.

HCA Inc. is self insured for malpractice insurance. The cost is passed to hospitals using on actuarially based calculations. Other home office costs are determined by the service provided and allocated based on patient days. Intercompany interest is also allocated and passed to the hospitals.

* Facilities' monthly operating costs as a percentage of total monthly operating costs to all entities.

Insurance, payroll and related taxes, workers comp, employee benefits are based on actual costs.

A capital charge is based on UHS's average cost of capital. The formula uses the hospitals' balance sheet data.

* The home office charges a Corporate Office Assessment (e.g., senior management, tax return preparation costs), an IT Assessment, and their Phoenix Services (centralized billing, etc).
Corporate Assessment is 1.91% of budgeted operating expenses

Corporate office computes management fees at 2.25% of hospital's net revenues.

However, the fees are adjusted to actual at the end of every fiscal year.

* The County Indirect Cost Allocation Plan uses a double-apportionment method to allocate centralized county government services costs to the various county departments.

N/A

* See **UHS** hospitals in Clark County section above.

See **Catholic Healthcare West** section above

* Actual costs are allocated at the % of entity budgeted revenue to total combined revenue of all entities.

* Based on information included in the
compliance engagement reports performed
by independent accountants

SECTION 7

ACCOUNTS RECEIVABLE POLICIES

EXHIBIT 6

**NEVADA HOSPITALS
ACCOUNTS RECEIVABLE POLICIES**

CLARK COUNTY HOSPITALS

HCA Inc. Hospitals

MountainView Hospital
Southern Hills Hospital & Medical Center

Sunrise Hospital & Medical Center

Universal Health Systems Hospitals (UHS)

Centennial Hills Hospital & Medical Center
Desert Springs Hospital
Spring Valley Hospital Medical Center
Summerlin Hospital Medical Center
Valley Hospital Medical Center

Catholic Healthcare West

Saint Rose Dominican Hospitals
Rose de Lima Campus
San Martin Campus
Siena Campus

IASIS Hospital

North Vista Hospital

Clark County Owned Hospital

University Medical Center

WASHOE COUNTY/CARSON CITY HOSPITALS

Carson Tahoe Regional Healthcare

Carson Tahoe Regional Medical Center

UHS

Northern Nevada Medical Center

Catholic Healthcare West

St. Mary's Regional Medical Center

Washoe Health System

Renown Regional Medical Center

ALL POLICIES ARE FORMALLY WRITTEN

CHARITY CARE POLICY

% of Federal Poverty Level	Maximum Time to Make Arrangements	Maximum Charity Discount
200%	Unlimited	100%
200%	Based on account balance	100%
200%	Unlimited	100%
200%		100%
500%	30 days	100%
200%	1 year	100%
500%	2 years	70%
400%	Based on need	100%
200%	1 year	100%
500%	30 days	100%
1000%	No limit	Lesser of \$200 co pay or 90 %

DISCOUNT POLICY

Maximum Discount Rate	Maximum Time to Make Arrangements
40-55%	Unlimited
55%	Case by case basis
49-68%	Case by case
30% plus	30 days after discharge
30% plus	30 days
50%	30 days
I/P 30% O/P 50%	2 years
50%	30 days
30% IP 20% OP	90 days
30%	none
40%	30 days

ACCOUNTS RECEIVABLE COLLECTION POLICY

Effort to Assist	Comply with FDCPA	Number of Contacts	Contact Method	Time Referral to Collections	Notify Before Referral	Notify Before Law Suit
Yes	Yes	Varies	Phone & Letter	140 days Maximum Average 71 days	Yes	Yes
Yes	Yes	Varies	Phone & Letter		Yes	Yes
Yes	Yes	3	Phone & Letter	180 days	Yes	Yes
Yes	Yes	Varies	Phone & Letter	30 - 90 days	Yes	Yes
Yes	Yes	3	Phone & Letter	90 days	Yes	Collection agency may sue
Yes	Yes	6	Phone & Letter	120 days	Yes	Yes
Yes	Yes	5	Phone & Letter	90 to 180 days	Yes	Yes
Yes	Yes	3	Phone & Letter	180 days minimum	Yes	Yes
Yes	Yes	7	Phone & Letter	120 days minimum	Yes	Yes

SECTION 8

FIVE YEAR COMPARATIVE FINANCIAL SUMMARIES

EXHIBIT 7

Five Year Comparative Financial Summary Statements	Page Number
---	--------------------

- | | |
|---------------------------------------|---|
| ▪ Statewide | 1 |
| ▪ Clark County Hospitals | 2 |
| ▪ Washoe County/Carson City Hospitals | 3 |
| ▪ Rural Hospitals | 4 |

STATEWIDE TOTALS

Exhibit 7

9/15/09

		FOR THE YEARS ENDED									
COMPARATIVE FINANCIAL SUMMARY		12/31/2008		12/31/2007		12/31/2006		12/31/2005		12/31/2004	
		Amount	%	Amount	%	Amount	%	Amount	%	Amount	%
BILLED CHARGES		\$ 16,604,319,875	100.0%	\$ 14,921,671,701	100.0%	\$ 13,074,873,077	100.0%	\$ 11,641,196,773	100.0%	\$ 10,260,171,000	100.0%
Inpatient		\$ 11,954,163,770		\$ 10,844,663,731		\$ 9,764,190,109		\$ 8,799,119,902		\$ 7,784,002,864	
Outpatient		\$ 4,650,156,105		\$ 4,077,007,970		\$ 3,310,682,968		\$ 2,842,076,871		\$ 2,476,168,136	
TOTAL DEDUCTIONS		\$ 12,648,206,931	76.2%	\$ 11,206,311,340	75.1%	\$ 9,665,759,557	73.9%	\$ 8,500,217,551	73.0%	\$ 7,443,700,308	72.5%
Inpatient		\$ 9,741,192,041		\$ 8,881,682,477		\$ 7,854,963,424		\$ 6,889,208,914		\$ 6,012,679,724	
Outpatient		\$ 2,907,014,890		\$ 2,324,628,863		\$ 1,810,796,133		\$ 1,601,921,116		\$ 1,426,146,409	
OPERATING REVENUE		\$ 3,956,112,944	23.8%	\$ 3,715,360,361	24.9%	\$ 3,409,113,520	26.1%	\$ 3,140,979,222	27.0%	\$ 2,816,470,692	27.5%
Inpatient		\$ 2,212,971,729		\$ 1,962,981,254		\$ 1,909,226,685		\$ 1,930,723,768		\$ 1,797,010,634	
Outpatient		\$ 1,743,141,215		\$ 1,752,379,107		\$ 1,499,886,835		\$ 1,249,166,029		\$ 1,061,365,627	
OTHER OPERATING REVENUE		\$ 97,479,359	2.4%	\$ 154,477,531	4.0%	\$ 147,735,707	4.2%	\$ 146,232,381	4.4%	\$ 140,069,020	4.7%
TOTAL OPERATING REVENUE		\$ 4,053,592,303	100.0%	\$ 3,869,837,893	100.0%	\$ 3,556,849,227	100.0%	\$ 3,287,211,603	100.0%	\$ 2,956,539,712	100.0%
OPERATING EXPENSES		\$ 4,170,227,194	102.9%	\$ 3,861,701,103	99.8%	\$ 3,477,399,277	97.8%	\$ 3,195,707,802	97.2%	\$ 2,916,557,440	98.6%
PROFIT (LOSS) HOSPITAL OPERATIONS		\$ (60,363,841)	-1.5%	\$ 8,136,790	0.2%	\$ 79,449,950	2.2%	\$ 91,503,801	2.8%	\$ 39,982,272	1.4%
Non-operating Income		\$ 82,838,716	2.0%	\$ 109,703,092	2.8%	\$ 56,939,561	1.6%	\$ 52,097,835	1.6%	\$ 44,175,891	1.5%
Non-operating Expense		\$ 55,876,783	1.4%	\$ 46,515,940	1.2%	\$ 20,622,146	0.6%	\$ 36,973,307	1.1%	\$ 33,769,429	1.1%
REVENUE OVER (UNDER) EXPENSES		\$ (33,401,908)	-0.8%	\$ 71,323,942	1.8%	\$ 115,767,365	3.3%	\$ 106,628,329	3.2%	\$ 50,388,734	1.7%

INPATIENT DAYS	\$ 1,236,578	\$ 1,210,190	1,199,844	1,173,758	1,113,025
ADMISSIONS	\$ 262,802	\$ 256,934	254,845	252,626	235,378
AVG. LENGTH OF STAY	4.71	4.71	4.71	4.65	4.73
AVG. DAILY CENSUS	3,378.63	3,315.59	3,287.2	3,215.8	3,038.8
OCCUPANCY PERCENTAGE	61.06%	64.63%	67.22%	67.56%	64.98%
Adjusted I/P Days	1,727,689	1,682,395	1,624,822	1,593,498	1,508,157
Adjusted Admissions	367,175	357,187	345,110	338,421	314,490
PER ADJUSTED ADMISSION					
Billed Charges + Other Operating Rev	45,487	42,208	38,314	34,831	33,070
Total Operating Revenue	11,040	10,834	10,306	9,713	9,401
Operating Expenses	11,358	10,811	10,076	9,443	9,274
Profit	-164.40	22.78	230.22	270.38	127.13
PER ADJUSTED INPATIENT DAY					
Billed Charges + Other Operating Rev	9,667	8,961	8,138	7,397	6,896
Total Operating Revenue	2,346	2,300	2,189	2,063	1,960
Operating Expenses	2,414	2,295	2,140	2,005	1,934
Profit	-67.51	4.84	48.90	57.42	26.61

TOTAL CLARK COUNTY HOSPITALS

Exhibit 7

9/15/09

FOR THE YEARS ENDED											
COMPARATIVE FINANCIAL SUMMARY		12/31/2008		12/31/2007		12/31/2006		12/31/2005		12/31/2004	
		Amount	%	Amount	%	Amount	%	Amount	%	Amount	%
BILLED CHARGES		12,794,314,912	100.0%	11,542,492,697	100.0%	9,969,360,054	100.0%	\$ 8,823,456,584	100.0%	\$ 7,667,417,571	100.0%
Inpatient		9,725,345,986		8,838,129,026		7,851,155,320		7,000,368,416		6,113,430,416	
Outpatient		3,068,968,926		2,704,363,671		2,118,204,734		1,823,088,168		1,553,987,155	
TOTAL DEDUCTIONS		10,074,496,100	78.7%	8,988,656,197	77.9%	7,668,352,084	76.9%	6,682,771,760	75.7%	5,734,953,258	74.8%
Inpatient		8,168,746,301		7,500,853,804		6,555,982,930		5,630,932,572		4,815,985,173	
Outpatient		1,905,749,799		1,487,802,393		1,112,369,154		1,051,839,188		918,968,085	
OPERATING REVENUE		2,719,818,812	21.3%	2,553,836,500	22.1%	2,301,007,970	23.1%	2,140,684,824	24.3%	1,932,464,313	25.2%
Inpatient		1,556,599,685		1,337,275,222		1,295,172,390		1,369,435,844		1,297,445,243	
Outpatient		1,163,219,127		1,216,561,278		1,005,835,580		771,248,980		635,019,070	
OTHER OPERATING REVENUE		41,175,378	1.5%	84,474,980	3.2%	83,180,199	3.5%	75,341,492	3.4%	69,014,326	3.4%
TOTAL OPERATING REVENUE		2,760,994,190	100.0%	2,638,311,480	100.0%	2,384,188,169	100.0%	2,216,026,316	100.0%	2,001,478,639	100.0%
OPERATING EXPENSES		2,866,728,277	103.8%	2,678,127,763	101.5%	2,364,203,980	99.2%	2,173,191,515	98.1%	1,995,030,058	99.7%
PROFIT (LOSS) HOSPITAL OPERATIONS		-70,371,120	-2.5%	-39,816,283	-1.5%	19,984,189	0.8%	42,834,801	1.9%	6,448,581	0.3%
Non-operating Revenue		52,502,573	1.9%	74,614,572	2.8%	24,710,149	1.0%	19,405,223	0.9%	17,009,691	0.8%
Non-operating Expense		15,763,299	0.6%	29,740,005	1.1%	3,634,005	0.2%	21,106,878	1.0%	24,154,320	1.2%
REVENUE OVER (UNDER) EXPENSES		-33,631,846	-1.2%	5,058,284	0.2%	41,060,333	1.7%	\$ 41,133,146	1.9%	\$ (696,048)	0.0%
INPATIENT DAYS		944,240		928,873		914,613		884,993		839,884	
ADMISSIONS		196,245		191,859		187,575		183,712		173,462	
AVG. LENGTH OF STAY		4.81		4.84		4.88		4.82		4.84	
AVG. DAILY CENSUS		2,579.89		2,544.86		2,505.79		2,424.6		2,294.8	
OCCUPANCY PERCENTAGE		70.55%		71.67%		75.99%		72.80%		70.22%	
Adjusted I/P Days		1,246,206		1,221,975		1,171,061		1,133,878		1,072,880	
Adjusted Admissions		259,004		252,399		240,169		233,533		219,513	
PER ADJUSTED ADMISSION											
Billed Charges + Other Operating Rev		49,557		46,066		41,856		38,105		35,244	
Total Operating Revenue		10,660		10,453		9,927		9,489		9,118	
Operating Expenses		11,068		10,611		9,844		9,306		9,088	
Profit		-408.23		-157.75		83.21		183.42		29.38	
PER ADJUSTED INPATIENT DAY											
Billed Charges + Other Operating Rev		10,300		9,515		8,584		7,848		7,211	
Total Operating Revenue		2,216		2,159		2,036		1,954		1,866	
Operating Expenses		2,300		2,192		2,019		1,917		1,860	
Profit		-84.84		-32.58		17.07		37.78		6.16	

TOTAL WASHOE COUNTY/CARSON CITY HOSPITALS

Exhibit 7

9/15/09

COMPARATIVE FINANCIAL SUMMARY	FOR THE YEARS ENDED									
	12/31/2008		12/31/2007		12/31/2006		12/31/2005		12/31/2004	
	Amount	%	Amount	%	Amount	%	Amount	%	Amount	%
BILLED CHARGES	3,299,440,693	100.0%	2,993,663,858	100.0%	2,764,905,539	100.0%	\$ 2,508,283,545	100.0%	\$ 2,346,438,567	100.0%
Inpatient	2,059,079,286		1,877,264,466		1,788,883,661		1,685,447,126		1,579,936,444	
Outpatient	1,240,361,407		1,116,399,392		976,021,878		822,836,419		766,502,123	
TOTAL DEDUCTIONS	2,316,428,604	70.2%	2,042,082,235	68.2%	1,848,432,785	66.9%	1,679,152,210	66.9%	1,597,303,991	68.1%
Inpatient	1,491,469,493		1,324,041,851		1,243,177,319		1,211,009,043		1,157,740,809	
Outpatient	824,959,111		718,040,384		605,255,466		468,143,167		439,563,182	
OPERATING REVENUE	983,012,089	29.8%	951,581,623	31.8%	916,472,754	33.1%	829,131,335	33.1%	749,134,576	31.9%
Inpatient	567,609,793		553,222,615		545,706,342		474,438,083		422,195,635	
Outpatient	415,402,296		398,359,008		370,766,412		354,693,252		326,938,941	
OTHER OPERATING REVENUE	12,079,042		31,530,808	3.2%	30,235,984	3.2%	37,467,990	4.3%	40,530,311	5.1%
TOTAL OPERATING REVENUE	995,091,131	100.0%	983,112,431	100.0%	946,708,738	100.0%	866,599,325	100.0%	789,664,887	100.0%
OPERATING EXPENSES	1,028,794,426	103.4%	955,382,554	97.2%	908,330,727	95.9%	829,587,063	95.7%	759,802,114	96.2%
PROFIT (LOSS) HOSPITAL OPERATIONS	-14,608,719	-1.5%	27,729,877	2.8%	38,378,011	4.1%	\$ 37,012,262	4.3%	\$ 29,862,773	3.8%
Non-operating Revenue	14,665,133	1.5%	21,407,663	2.2%	21,305,778	2.3%	22,875,494	2.6%	18,916,509	2.4%
Non-operating Expense	39,957,719	4.0%	10,905,218	1.1%	9,117,926	1.0%	8,822,840	1.0%	4,598,910	0.6%
REVENUE OVER (UNDER) EXPENSES	-39,901,305	-4.0%	38,232,322	3.9%	50,565,863	5.3%	\$ 51,064,916	5.9%	\$ 44,180,372	5.6%

INPATIENT DAYS	261,446	253,934	258,531	243,792	235,627
ADMISSIONS	56,402	55,822	56,781	53,449	48,802
AVG. LENGTH OF STAY	4.64	4.55	4.55	4.56	4.83
AVG. DAILY CENSUS	714.33	695.7	708.3	667.9	643.8
OCCUPANCY PERCENTAGE	46.06%	54.01%	56.19%	56.39%	54.56%
Adjusted I/P Days	420,471	409,212	403,956	370,510	359,045
Adjusted Admissions	90,709	89,957	88,721	80,731	73,730
PER ADJUSTED ADMISSION					
Billed Charges + Other Operating Rev	36,507	33,629	31,505	31,534	32,374
Total Operating Revenue	10,970	10,929	10,671	10,734	10,710
Operating Expenses	11,342	10,620	10,238	10,276	10,305
Profit	-371.56	308.26	432.57	458.46	405.03
PER ADJUSTED INPATIENT DAY					
Billed Charges + Other Operating Rev	7,876	7,393	6,919	6,871	6,648
Total Operating Revenue	2,367	2,402	2,344	2,339	2,199
Operating Expenses	2,447	2,335	2,249	2,239	2,116
Profit	-80.16	67.76	95.01	99.90	83.17

TOTAL RURAL HOSPITALS

Exhibit 7

9/15/09

		FOR THE YEARS ENDED									
COMPARATIVE FINANCIAL SUMMARY		12/31/2008		12/31/2007		12/31/2006		12/31/2005		12/31/2004	
		Amount	%	Amount	%	Amount	%	Amount	%	Amount	%
BILLED CHARGES		510,564,270	100.0%	385,515,146	100.0%	\$ 340,607,484	100.0%	\$ 309,456,644	100.0%	\$ 246,314,862	100.0%
Inpatient		169,738,498		129,270,239		\$ 124,151,128		\$ 113,304,360		\$ 90,636,004	
Outpatient		340,825,772		256,244,907		\$ 216,456,356		\$ 196,152,284		\$ 155,678,858	
TOTAL DEDUCTIONS		257,282,227	50.4%	175,572,908	45.5%	\$ 148,974,688	43.7%	\$ 138,293,581	44.7%	\$ 111,443,059	45.2%
Inpatient		80,976,247		56,786,822		\$ 55,803,175		\$ 47,267,299		\$ 38,953,742	
Outpatient		176,305,980		118,786,086		\$ 93,171,513		\$ 81,938,761		\$ 67,615,142	
OPERATING REVENUE		253,282,043	49.6%	209,942,238	54.5%	\$ 191,632,796	56.3%	\$ 171,163,063	55.3%	\$ 134,871,803	54.8%
Inpatient		88,762,251		72,483,417		\$ 68,347,953		\$ 86,849,841		\$ 77,369,756	
Outpatient		164,519,792		137,458,821		\$ 123,284,843		\$ 123,223,797		\$ 99,407,616	
OTHER OPERATING REVENUE		44,224,939	14.9%	38,471,743	15.5%	\$ 34,319,524	15.2%	\$ 33,422,899	16.3%	\$ 30,524,383	18.5%
TOTAL OPERATING REVENUE		297,506,982	100.0%	248,413,982	100.0%	\$ 225,952,320	100.0%	\$ 204,585,962	100.0%	\$ 165,396,186	100.0%
OPERATING EXPENSES		274,704,491	92.3%	228,190,786	91.9%	\$ 204,864,570	90.7%	\$ 192,929,224	94.3%	\$ 161,725,268	97.8%
PROFIT (LOSS) HOSPITAL OPERATIONS		24,615,998	8.3%	20,223,196	8.1%	\$ 21,087,750	9.3%	\$ 11,656,738	5.7%	\$ 3,670,918	2.2%
Non-operating Income		15,671,010	5.3%	13,680,857	5.5%	\$ 10,923,634	4.8%	\$ 9,817,118	4.8%	\$ 8,249,691	5.0%
Non-operating Expense		155,765	0.1%	5,870,717	2.4%	\$ 7,870,215	3.5%	\$ 7,043,589	3.4%	\$ 5,016,199	3.0%
REVENUE OVER (UNDER) EXPENSES		40,131,243	12.8%	28,033,336	10.7%	\$ 24,141,169	10.2%	\$ 14,430,267	6.7%	\$ 6,904,410	4.0%
INPATIENT DAYS		30,892		27,383		26,700		26,028		21,881	
ADMISSIONS		10,155		9,253		10,489		8,993		7,621	
AVG. LENGTH OF STAY		3.04		2.96		2.55		2.89		2.87	
AVG. DAILY CENSUS		84.40		75.02		73.2		71.3		59.8	
OCCUPANCY PERCENTAGE		25.97%		25.78%		21.99%		29.11%		25.71%	
Adjusted I/P Days		100,970		89,812		80,632		89,109		76,231	
Adjusted Admissions		33,192		30,350		31,676		27,158		23,063	
PER ADJUSTED ADMISSION											
Billed Charges + Other Operating Rev		16,715		13,970		11,836		13,805		14,867	
Total Operating Revenue		8,963		8,185		7,133		8,320		8,871	
Operating Expenses		8,276		7,519		6,468		7,543		8,365	
Profit		687.00		666.34		665.73		776.48		505.44	
PER ADJUSTED INPATIENT DAY											
Billed Charges + Other Operating Rev		5,495		4,721		4,650		4,207		4,498	
Total Operating Revenue		2,946		2,766		2,802		2,536		2,684	
Operating Expenses		2,721		2,541		2,541		2,299		2,531	
Profit		225.83		225.17		261.53		236.65		152.91	

SECTION 9

INDIVIDUAL HOSPITAL BREAKOUTS

EXHIBIT 8

- Clark County Hospitals
- Washoe County/Carson City Hospitals
- Rural Hospitals
- Rehab/Specialty Hospitals
- Psychiatric Hospitals

Page Number

1 - 2

3

4 - 5

6 - 7

8

Exhibit 8

CLARK COUNTY HOSPITALS	Centennial Hills Hospital	Desert Springs Hospital	Mountain View Hospital	North Vista Hospital	Southern Hills Hospital & Medical Center	Spring Valley Hospital Medical	St. Rose Dominican Rose de Lima	St. Rose Dominican San Martin
Inpatient Billed Charges	255,930,015	769,217,818	738,575,639	348,225,924	236,521,787	703,819,983	365,587,222	393,282,653
Outpatient Billed Charges	102,617,110	209,334,991	216,559,641	115,403,005	107,600,650	191,265,393	182,261,568	131,958,128
Billed Charges	358,547,125	978,552,809	955,135,280	463,628,929	344,122,437	895,085,376	547,848,790	525,240,781
Inpatient Deductions	213,943,951	632,135,291	592,176,793	306,595,860	188,488,963	703,097,670	307,784,299	313,328,534
Outpatient Deductions	70,996,749	152,333,321	168,206,335	72,189,484	80,724,386	26,362,398	125,038,474	91,412,408
Deductions	284,940,700	784,468,612	760,383,128	378,785,344	269,213,349	729,460,068	432,822,773	404,740,942
Inpatient Operating Revenue	41,986,064	137,082,527	146,398,846	41,630,064	48,032,824	722,313	57,802,923	79,954,119
Outpatient Operating Revenue	31,620,361	57,001,670	48,353,306	43,213,521	26,876,264	164,902,995	57,223,094	40,545,720
Operating Revenue	73,606,425	194,084,197	194,752,152	84,843,585	74,909,088	165,625,308	115,026,017	120,499,839
Other Operating Revenue	0	0	242,132	357,069	512,173	64,054	507,407	443,466
Total Operating Revenue	73,606,425	194,084,197	194,994,284	85,200,654	75,421,261	165,689,362	115,533,424	120,943,305
Operating Expenses	80,207,200	165,249,440	196,241,361	84,609,657	111,718,918	147,158,871	121,996,879	136,908,487
Net Operating Revenue	(6,600,775)	30,487,678	-755,177	954,298	-36,126,375	18,604,328	-5,994,783	-15,447,036
Non-Operating Revenue	31,459	0	0	1,469	0	0	1,574,030	-262,366
Non-Operating Expense	0	101,964	0	0	0	80,401	0	0
Net Income (Loss)	(6,569,316)	30,385,714	-755,177	955,767	-36,126,375	18,523,927	-4,420,753	-15,709,402
Inpatient Days	22,430	66,525	68,376	44,534	25,438	60,377	37,257	32,732
Admissions	6,496	12,897	15,056	8,287	6,239	14,181	8,754	7,986
Avg Length Of Stay	2.99	5.16	4.54	5.37	4.08	4.26	4.26	4.10
Avg Daily Census	53.09	181.76	186.82	121.68	69.50	164.96	101.80	89.43
Occupancy (%)	33.72	63.55	79.50	65.77	50.00	78.55	70.20	60.84
Adjusted Inpatient Days	27,220.61	84,629.12	88,447.12	59,338.35	37,065.57	76,790.14	55,882.99	43,751.48
Adjusted Admissions	9,100.62	16,406.79	19,475.54	11,041.83	9,090.81	18,036.02	13,130.41	10,674.55
Per Adjusted Admission								
Billed Charges + Other Oper. Rev.	39,398.09	59,643.16	49,055.24	42,020.75	37,910.21	49,631.20	41,762.31	49,246.51
Operating Revenue	8,088.07	11,829.50	10,012.26	7,716.17	8,296.43	9,186.58	8,798.92	11,330.06
Operating Expenses	8,813.38	10,072.02	10,076.30	7,662.65	12,289.21	8,159.16	9,291.17	12,825.69
Profit	-725.31	1,757.49	-64.03	53.52	-3,992.78	1,027.42	-492.25	-1,495.63
Per Adjusted Day								
Billed Charges + Other Oper. Rev.	13,171.90	11,562.84	10,801.68	7,819.33	9,297.97	11,657.09	9,812.58	12,015.23
Operating Revenue	2,704.07	2,293.35	2,204.64	1,435.84	2,034.81	2,157.69	2,067.42	2,764.33
Operating Expenses	2,946.56	1,952.63	2,218.74	1,425.88	3,014.09	1,916.38	2,183.08	3,129.23
Profit	-242.49	340.72	-14.10	9.96	-979.28	241.31	-115.66	-364.91

Exhibit 8

CLARK COUNTY HOSPITALS		St. Rose Dominican Siena Campus	Summerlin Hospital Medical Center LLC	Sunrise Hospital & Medical Center	University Medical Center	Valley Hospital Medical Center	TOTAL CLARK Co.
Inpatient Billed Charges	Continued	816,564,920	901,974,051	1,736,527,279	1,312,494,246	1,146,624,449	9,725,345,986
Outpatient Billed Charges		338,727,551	293,721,345	490,247,042	491,885,596	197,386,906	3,068,968,926
Billed Charges		1,155,292,471	1,195,695,396	2,226,774,321	1,804,379,842	1,344,011,355	12,794,314,912
Inpatient Deductions		643,536,526	912,091,876	1,396,665,453	1,011,346,568	947,554,517	8,168,746,301
Outpatient Deductions		236,581,850	42,788,603	362,835,645	336,060,415	140,219,731	1,905,749,799
Deductions		880,118,376	954,880,479	1,759,501,098	1,347,406,983	1,087,774,248	10,074,496,100
Inpatient Operating Revenue	Continued	173,028,394	-10,117,825	339,861,826	301,147,678	199,069,932	1,556,599,685
Outpatient Operating Revenue		102,145,701	250,932,742	127,411,397	155,825,181	57,167,175	1,163,219,127
Operating Revenue		275,174,095	240,814,917	467,273,223	456,972,859	256,237,107	2,719,818,812
Other Operating Revenue		1,079,723	243,181	2,167,670	35,393,810	164,693	41,175,378
Total Operating Revenue		276,253,818	241,058,098	469,440,893	492,366,669	256,401,800	2,760,994,190
Operating Expenses		247,566,966	221,770,662	513,880,158	593,991,778	245,427,900	2,866,728,277
Net Operating Revenue	Continued	29,718,851	19,515,868	-42,456,648	-73,245,249	10,973,900	-70,371,120
Non-Operating Revenue		1,989,509	62,919	79,941	48,508,908	516,704	52,502,573
Non-Operating Expense		0	6,436,048	2,445,064	0	6,699,822	15,763,299
Net Income (Loss)		31,708,360	13,142,739	-44,821,771	-24,736,341	4,790,782	-33,631,846
Inpatient Days		72,120	90,463	171,024	153,460	99,504	944,240
Admissions		17,072	19,837	31,312	27,979	20,149	196,245
Avg Length Of Stay	Continued	4.22	4.56	5.46	5.48	4.94	4.81
Avg Daily Census		197.05	247.17	467.28	419.29	271.87	2,579.89
Occupancy (%)		89.98	87.96	66.66	77.50	67.29	70.55
Adjusted Inpatient Days		102,132.19	119,946.01	219,520.06	215,110.78	116,647.52	1,246,205.88
Adjusted Admissions		24,176.38	26,302.12	40,190.92	39,219.24	23,620.47	259,003.72
Per Adjusted Admission							
Billed Charges + Other Oper. Rev.	Continued	47,830.65	45,469.28	55,458.84	46,909.98	56,907.26	49,557.17
Operating Revenue		11,426.60	9,164.97	11,680.27	12,554.21	10,855.07	10,660.06
Operating Expenses		10,240.03	8,431.66	12,785.98	15,145.42	10,390.48	11,068.29
Profit		1,186.57	733.30	-1,105.70	-2,591.21	464.59	-408.23
Per Adjusted Day							
Billed Charges + Other Oper. Rev.		11,322.31	9,970.64	10,153.71	8,552.68	11,523.40	10,299.65
Operating Revenue		2,704.87	2,009.72	2,138.49	2,288.90	2,198.09	2,215.52
Operating Expenses		2,423.99	1,848.92	2,340.93	2,761.33	2,104.01	2,300.36
Profit		280.88	160.80	-202.44	-472.43	94.08	-84.84

Exhibit 8

WASHOE/CARSON CITY HOSPITALS	Carson Tahoe Hospital	Northern Nevada Medical	Renown	Renown South Meadows	Saint Mary's	Sierra Surgery	TOTAL WASHOE Co. CARSON CITY
Inpatient Billed Charges	313,594,031	143,433,568	991,662,881	92,712,903	486,203,329	31,472,574	2,059,079,286
Outpatient Billed Charges	159,155,960	82,976,779	467,257,463	121,675,888	360,045,084	49,250,233	1,240,361,407
Billed Charges	472,749,991	226,410,347	1,458,920,344	214,388,791	846,248,413	80,722,807	3,299,440,693
Inpatient Deductions	217,325,063	102,469,929	713,262,751	69,843,742	368,898,637	19,669,371	1,491,469,493
Outpatient Deductions	107,742,114	71,630,601	297,596,168	76,534,513	241,668,113	29,787,602	824,959,111
Deductions	325,067,177	174,100,530	1,010,858,919	146,378,255	610,566,750	49,456,973	2,316,428,604
Inpatient Operating Revenue	96,268,968	40,963,639	278,400,130	22,869,161	117,304,692	11,803,203	567,609,793
Outpatient Operating Revenue	51,413,846	11,346,178	169,661,295	45,141,375	118,376,971	19,462,631	415,402,296
Operating Revenue	147,682,814	52,309,817	448,061,425	68,010,536	235,681,663	31,265,834	983,012,089
Other Operating Revenue	1,080,086	7,251	1,757,863	1,601,873	7,524,029	107,940	12,079,042
Total Operating Revenue	148,762,900	52,317,068	449,819,288	69,612,409	243,205,692	31,373,774	995,091,131
Operating Expenses	152,822,150	53,684,861	460,327,116	63,424,425	269,024,112	29,511,762	1,028,794,426
Net Operating Revenue	-2,474,430	-1,367,793	-1,473,550	7,511,661	-18,666,619	1,862,012	-14,608,719
Non-Operating Revenue	10,135,466	2,231,365	4,233,601	0	-2,011,754	76,455	14,665,133
Non-Operating Expense	13,635,619	1,019,611	22,584,181	14,753	2,703,555	0	39,957,719
Net Income (Loss)	-5,974,583	-156,039	-19,824,130	7,496,908	-23,381,928	1,938,467	-39,901,305
Inpatient Days	38,993	16,860	137,095	12,703	53,436	2,359	261,446
Admissions	9,777	3,660	26,184	3,265	12,603	913	56,402
Avg Length Of Stay	3.99	4.61	5.24	3.89	4.24	2.58	4.64
Avg Daily Census	106.54	46.07	374.58	34.71	146.00	6.45	714.33
Occupancy (%)	61.94	46.07	46.36	45.67	38.42	42.97	46.06
Adjusted Inpatient Days	58,917.12	26,614.42	201,935.24	29,593.82	93,833.55	6,058.60	420,471.22
Adjusted Admissions	14,772.72	5,777.51	38,567.94	7,606.38	22,130.85	2,344.85	90,708.67
Per Adjusted Admission							
Billed Charges + Other Oper. Rev.	32,074.67	39,189.50	37,872.86	28,395.99	38,578.38	34,471.60	36,507.20
Operating Revenue	10,070.11	9,055.30	11,663.04	9,151.85	10,989.44	13,379.86	10,970.19
Operating Expenses	10,344.89	9,292.05	11,935.49	8,338.32	12,156.07	12,585.78	11,341.74
Profit	-274.78	-236.74	-272.45	813.53	-1,166.63	794.09	-371.56
Per Adjusted Day							
Billed Charges + Other Oper. Rev.	8,042.32	8,507.33	7,233.40	7,298.50	9,098.80	13,341.49	7,875.73
Operating Revenue	2,524.95	1,965.74	2,227.54	2,352.26	2,591.88	5,178.39	2,366.61
Operating Expenses	2,593.85	2,017.13	2,279.58	2,143.16	2,867.04	4,871.05	2,446.77
Profit	-68.90	-51.39	-52.04	209.10	-275.15	307.33	-80.16

								Exhibit 8
RURAL HOSPITALS	Banner Churchill Community	Battle Mountain General Hospital	Boulder City Hospital Inc	Carson Valley Medical	Desert View Regional	Grover C Dils Medical Center	Humboldt General Hospital	Incline Village Community
Inpatient Billed Charges	38,078,619	408,148	10,243,898	17,828,710	4,504,943	913,822	13,392,193	450,728
Outpatient Billed Charges	51,283,558	5,454,140	24,421,272	58,451,902	7,058,956	2,095,618	29,876,460	12,360,189
Billed Charges	89,362,177	5,862,288	34,665,170	76,280,612	11,563,899	3,009,440	43,268,653	12,810,917
Inpatient Deductions	18,650,766	40,168	4,633,189	10,678,536	2,899,620	131,729	5,801,793	279,005
Outpatient Deductions	28,521,182	2,475,116	15,437,421	35,417,010	4,533,959	677,967	11,739,268	3,980,516
Deductions	47,171,948	2,515,284	20,070,610	46,095,546	7,433,579	809,696	17,541,061	4,259,521
Inpatient Operating Revenue	19,427,853	367,980	5,610,709	7,150,174	1,605,323	782,093	7,590,400	171,723
Outpatient Operating Revenue	22,762,376	2,979,024	8,983,851	23,034,892	2,524,997	1,417,651	18,137,192	8,379,673
Operating Revenue	42,190,229	3,347,004	14,594,560	30,185,066	4,130,320	2,199,744	25,727,592	8,551,396
Other Operating Revenue	7,097,494	2,602,560	3,626,571	3,343,524	99,905	2,049,186	3,384,476	320,445
Total Operating Revenue	49,287,723	5,949,564	18,221,131	33,528,590	4,230,225	4,248,930	29,112,068	8,871,841
Operating Expenses	47,619,493	8,039,669	18,962,603	34,665,151	4,877,731	4,828,012	25,409,700	9,169,221
Net Operating Revenue	1,668,230	-2,048,223	-741,472	-428,761	-647,506	-610,039	3,702,368	-29,793
Non-Operating Revenue	1,381	2,581,821	333,474	45,911	0	650,737	5,664,796	1,113,215
Non-Operating Expense	0	15,554	14,018	0	0	3,530	0	0
Net Income (Loss)	1,669,611	518,044	-422,016	-382,850	-647,506	37,168	9,367,164	1,083,422
Inpatient Days	6,487	215	2,936	2,908	838	400	2,138	60
Admissions	2,121	72	800	785	404	129	674	19
Avg Length Of Stay	3.06	2.99	3.67	3.7	2.07	3.1	3.1	3.16
Avg Daily Census	17.72	0.59	8.02	7.95	2.29	1.09	5.84	0.16
Occupancy (%)	59.19	6.53	11.97	34.55	9.54	5.46	26.55	4.1
Adjusted Inpatient Days	16,432.68	4,459.03	10,974.78	12,987.31	2,169.68	2,214.27	7,447.95	1,748.02
Adjusted Admissions	5,372.86	1,493.26	2,990.40	3,505.86	1,046.00	714.10	2,347.95	553.54
Per Adjusted Admission								
Billed Charges + Other Oper. Rev.	17,953.14	5,668.72	12,804.87	22,711.73	11,150.85	7,083.89	19,869.72	23,722.53
Operating Revenue	9,173.47	3,984.29	6,093.20	9,563.59	4,044.19	5,950.03	12,398.93	16,027.47
Operating Expenses	8,862.97	5,383.99	6,341.15	9,887.78	4,663.22	6,760.95	10,822.08	16,564.70
Profit	310.49	-1,399.70	-247.95	-324.19	-619.03	-810.92	1,576.85	-537.23
Per Adjusted Day								
Billed Charges + Other Oper. Rev.	5,869.99	1,898.36	3,489.07	6,130.92	5,375.83	2,284.55	6,263.89	7,512.13
Operating Revenue	2,999.37	1,334.27	1,660.27	2,581.64	1,949.70	1,918.88	3,908.74	5,075.36
Operating Expenses	2,897.85	1,803.01	1,727.83	2,669.16	2,248.14	2,180.41	3,411.64	5,245.49
Profit	101.52	-468.74	-67.56	-87.51	-298.43	-261.52	497.10	-170.12
								Page 4

Exhibit 8

REHAB / SPECIALTY HOSPITALS	Desert Canyon Rehabilitation Hospital	Harmon Medical and Rehabilitation	Healthsouth Hospital at Tenaya	Healthsouth Rehabilitation of Henderson	Healthsouth Rehabilitation of Las Vegas	Horizon Specialty Hospital-Las Vegas	Kindred Hospital Las Vegas at Desert Springs
Inpatient Billed Charges	10,667,244	82,059,573	76,283,769	45,611,913	60,252,226	20,947,139	68,457,772
Outpatient Billed Charges	373,665	0	0	3,487,395	1,117,516	0	0
Billed Charges	11,040,909	82,059,573	76,283,769	49,099,308	61,369,742	20,947,139	68,457,772
Inpatient Deductions	3,823,170	56,903,764	48,149,382	19,640,639	29,724,996	9,869,361	50,284,238
Outpatient Deductions	214,510	0	0	1,409,522	661,010	0	0
Deductions	4,037,680	56,903,764	48,149,382	21,050,161	30,386,006	9,869,361	50,284,238
Inpatient Operating Revenue	6,844,074	0	28,134,387	25,971,274	30,527,230	11,077,778	18,173,534
Outpatient Operating Revenue	159,155	0	0	2,077,873	456,506	0	0
Operating Revenue	7,003,229	0	28,134,387	28,049,147	30,983,736	11,077,778	18,173,534
Other Operating Revenue	77,049	25,155,809	80,608	28,505	23,232	0	0
Total Operating Revenue	7,080,278	25,155,809	28,214,995	28,077,652	31,006,968	11,077,778	18,173,534
Operating Expenses	8,980,209	22,929,982	25,584,814	19,434,305	21,159,227	10,934,495	14,821,642
Net Operating Revenue	(1,899,931)	2,225,827	2,629,035	8,643,347	9,847,741	143,283	3,351,892
Non-Operating Revenue	0	0	40	0	0	2,530	1,008
Non-Operating Expense	0	0	0	0	0	0	0
Net Income (Loss)	(1,899,931)	2,225,827	2,629,075	8,643,347	9,847,741	145,813	3,352,900
Inpatient Days	5,299	42,023	20,353	22,115	25,635	10,692	12,722
Admissions	591	3,548	734	1,193	1,906	371	422
Avg Length Of Stay	8.97	11.84	27.73	18.54	13.45	28.82	30.15
Avg Daily Census	14.48	114.82	55.61	60.42	70.04	29.21	34.76
Occupancy (%)	28.96	98.98	79.44	86.32	88.66	47.89	86.90
Adjusted Inpatient Days	5,522.89	54,905.38	20,374.51	23,819.69	26,120.34	10,692.00	12,722.00
Adjusted Admissions	615.97	4,635.66	734.78	1,284.96	1,942.09	371.00	422.00
Per Adjusted Admission							
Billed Charges + Other Oper. Rev.	18,049.48	23,128.40	103,928.84	38,232.95	31,611.87	56,461.29	162,222.21
Operating Revenue	11,494.50	5,426.59	38,399.47	21,850.99	15,965.81	29,859.24	43,065.25
Operating Expenses	14,578.95	4,946.43	34,819.90	15,124.44	10,895.10	29,473.03	35,122.37
Profit	(3,084.45)	480.15	3,579.57	6,726.55	5,070.70	386.21	7,942.87
Per Adjusted Day							
Billed Charges + Other Oper. Rev.	2,013.07	1,952.73	3,748.04	2,062.49	2,350.39	1,959.14	5,381.05
Operating Revenue	1,281.99	458.17	1,384.82	1,178.76	1,187.08	1,036.08	1,428.51
Operating Expenses	1,626.00	417.63	1,255.73	815.89	810.07	1,022.68	1,165.04
Profit	(344.01)	40.54	129.09	362.87	377.01	13.40	263.47

Exhibit 8

REHAB / SPECIALTY HOSPITALS	Kindred Hosp. Las Vegas Flamingo	Kindred Hospital Las Vegas-Sahara	Progressive Hospital- Stonecreek	Renown Rehabilitation	Spring Mountain Sahara	Tahoe Pacific Hospital	UMC-Rancho Rehabilitation Center	TOTAL REHAB / SPECIALITY
Inpatient Billed Charges	122,410,649	77,144,904	17,472,193	27,821,298	8,712,600	73,647,009	13,571,809	705,060,098
Outpatient Billed Charges	2,249,532	2,697,992	0	16,772,783	0	0	0	26,698,883
Billed Charges	124,660,181	79,842,896	23,921,421	44,594,081	8,712,600	73,647,009	13,571,809	738,208,209
Inpatient Deductions	88,203,318	54,797,090	10,542,095	16,845,718	3,811,025	46,703,073	5,753,692	445,051,561
Outpatient Deductions	1,287,214	1,848,918	0	9,669,371	0	0	0	15,090,545
Deductions	89,490,532	56,646,008	14,468,221	26,515,089	3,811,025	46,703,073	5,753,692	464,068,232
Inpatient Operating Revenue	34,207,331	22,347,814	9,453,200	10,975,580	4,901,575	26,943,936	7,818,117	237,375,830
Outpatient Operating Revenue	962,318	849,074	0	7,103,412	0	0	0	11,608,338
Operating Revenue	35,169,649	23,196,888	9,453,200	18,078,992	4,901,575	26,943,936	7,818,117	248,984,168
Other Operating Revenue	0	0	3,741	166,422	1,546	200	237	25,537,349
Total Operating Revenue	35,169,649	23,196,888	9,456,941	18,245,414	4,903,121	26,944,136	7,818,354	274,521,517
Operating Expenses	33,595,304	21,051,028	9,078,003	18,867,467	3,941,777	17,039,824	4,402,108	231,820,185
Net Operating Revenue	1,574,345	2,145,860	385,033	235,500	965,834	9,908,083	3,416,731	43,572,580
Non-Operating Revenue	208,343	52,592	0	0	1,633	6,272	0	272,418
Non-Operating Expense	9,120	0	0	1,051	777,563	2,102,099	0	2,889,833
Net Income (Loss)	1,773,568	2,198,452	93,481	234,449	189,904	7,812,256	3,416,731	40,663,613
Inpatient Days	26,609	16,308	8,701	7,986	4,659	12,027	6,697	221,826
Admissions	906	528	397	659	471	433	411	12,571
Avg Length Of Stay	29.37	30.89	21.90	12.12	9.89	27.75	16.29	17.65
Avg Daily Census	72.70	44.56	23.77	21.82	12.73	32.86	18.30	606.08
Occupancy (%)	69.53	85.69	99.06	35.19	56.68	54.77	53.82	58.73
Adjusted Inpatient Days	27,097.99	16,878.34	11,914.98	12,848.34	4,659.83	12,026.70	6,697.12	240,289.62
Adjusted Admissions	922.65	546.47	544.08	1,060.24	471.08	433.33	411.01	13,616.98
Per Adjusted Admission								
Billed Charges + Other Oper. Rev.	135,111.09	146,107.77	43,973.64	42,217.45	18,498.09	169,954.64	33,021.43	56,087.73
Operating Revenue	38,118.10	42,448.93	17,381.54	17,208.81	10,408.18	62,178.61	19,022.43	20,160.23
Operating Expenses	36,411.77	38,522.13	16,685.06	17,795.52	8,367.47	39,322.56	10,710.54	17,024.34
Profit	1,706.33	3,926.80	696.48	-586.71	2,040.71	22,856.04	8,311.89	3,135.89
Per Adjusted Day								
Billed Charges + Other Oper. Rev.	4,600.35	4,730.49	2,007.99	3,483.76	1,870.06	6,123.64	2,026.55	3,178.44
Operating Revenue	1,297.87	1,374.36	793.70	1,420.06	1,052.21	2,240.36	1,167.42	1,142.46
Operating Expenses	1,239.77	1,247.22	761.90	1,468.48	845.91	1,416.83	657.31	964.75
Profit	58.10	127.14	31.80	-48.42	206.30	823.53	510.11	177.71

Exhibit 8

PSYCHIATRIC HOSPITALS	Montevista Hospital	Red Rock Behavioral Health	Spring Mountain Treatment	West Hills Hospital	Willow Springs Center	TOTAL PSYCHIATRIC
Inpatient Billed Charges	33,364,784	6,560,259	17,383,770	19,345,813	18,229,873	94,884,499
Outpatient Billed Charges	5,407,241	0	0	1,593,384	2,729,347	9,729,972
Billed Charges	38,772,025	6,560,259	17,383,770	20,939,197	20,959,220	104,614,471
Inpatient Deductions	17,440,487	2,723,977	7,634,985	8,123,030	6,357,125	42,279,604
Outpatient Deductions	2,197,282	0	0	578,407	940,386	3,716,075
Deductions	19,637,769	2,723,977	7,634,985	8,701,437	7,297,511	45,995,679
Inpatient Operating Revenue	15,924,297	3,836,282	9,748,785	11,222,783	11,872,748	52,604,895
Outpatient Operating Revenue	3,209,959	0	0	1,014,977	1,788,961	6,013,897
Operating Revenue	19,134,256	3,836,282	9,748,785	12,237,760	13,661,709	58,618,792
Other Operating Revenue	0	0	1,386,026	31,512	375,611	1,793,149
Total Operating Revenue	19,134,256	3,836,282	11,134,811	12,269,272	14,037,320	60,411,941
Operating Expenses	16,744,647	3,076,054	10,977,867	11,391,263	11,133,055	53,322,886
Net Operating Revenue	2,389,609	760,228	165,296	913,066	2,917,731	7,145,930
Non-Operating Revenue	78,892	663	21,493	0	15,474	116,522
Non-Operating Expense	0	0	1,540,186	0	841	1,541,027
Net Income (Loss)	2,468,501	760,891	-1,353,397	913,066	2,932,364	5,721,425
Inpatient Days	24,848	5,061	12,358	15,733	25,702	83,702
Admissions	3,470	541	754	2,091	285	7,141
Avg Length Of Stay	7.2	9.4	16.4	7.5	90.2	11.72
Avg Daily Census	67.9	13.8	33.8	43.0	70.2	228.69
Occupancy (%)	84.86	65.85	82.35	45.25	92.40	64.60
Adjusted Inpatient Days	28,874.97	5,061.00	13,343.32	17,054.45	30,079.63	93,867.08
Adjusted Admissions	4,032.36	541.00	814.12	2,266.63	333.54	8,008.23
Per Adjusted Admission						
Billed Charges + Other Oper. Rev.	9,615.21	12,126.17	23,055.40	9,251.94	63,964.47	13,287.28
Operating Revenue	4,745.17	7,091.09	13,677.16	5,413.01	42,085.62	7,543.73
Operating Expenses	4,152.56	5,685.87	13,484.38	5,025.64	33,378.28	6,658.51
Profit	592.61	1,405.23	192.78	387.36	8,707.35	885.22
Per Adjusted Day						
Billed Charges + Other Oper. Rev.	1,342.76	1,296.24	1,406.68	1,229.63	709.28	1,133.60
Operating Revenue	662.66	758.01	834.49	719.42	466.67	643.59
Operating Expenses	579.90	607.80	822.72	667.94	370.12	568.07
Profit	82.76	150.21	11.76	51.48	96.55	75.52

SECTION 10

10 YEAR UTILIZATION CHARTS AND GRAPHS

EXHIBIT 9

Ten Year Charts

Page Number

- Average Daily Census
- Occupancy Percentages
- Average Length of Stay
- Admissions per 1,000 Population
- Inpatient Days per 1,000 Population
- Average Licensed Beds per 1,000 Population

1
2
3
4
5
6

Ten Year Graphs

- Average Daily Census
- Occupancy Percentages
- Average Length of Stay
- Admissions per 1,000 Population
- Inpatient Days per 1,000 Population
- Average Licensed Beds per 1,000 Population

7
8
9
10
11
12

NEVADA ACUTE CARE HOSPITALS

AVERAGE DAILY CENSUS

CALENDAR YEARS 1999 THROUGH 2008

FACILITY NAME	1999	2000	2001	2002	2003	2004	2005	2006	2007	2008
STATEWIDE TOTAL	2,331.0	2,463.4	2,618.7	2,781.1	2,830.7	2,996.3	3,163.9	3,291.7	3,315.6	3,378.6
CLARK COUNTY										
Centennial Hills Hospital										53.09
Desert Springs Hospital	178.7	156.9	163.3	179.7	166.4	166.1	175.9	182.2	186.0	181.8
MountainView Hospital	109.8	122.0	158.2	168.5	182.7	188.4	196.2	203.6	181.5	186.8
North Vista Hospital	105.8	113.2	113.1	116.3	115.5	102.2	108.2	117.0	129.2	121.7
St. Rose Dominican - Rose de Lima Campus	72.4	94.9	87.9	103.4	98.9	96.2	97.9	97.7	97.3	101.8
St. Rose Dominican - San Martin Campus								4.1	56.2	89.4
St. Rose Dominican - Siena Campus		35.6	112.9	133.6	148.6	180.6	188.3	190.4	190.7	197.1
Southern Hills Hospital & Medical Center						47.1	68.6	70.3	69.5	69.5
Spring Valley Hospital Medical Center					12.1	80.4	104.1	134.7	152.8	165.0
Summerlin Hospital Medical Center	103.5	127.4	136.1	151.0	172.8	183.1	231.3	249.1	259.5	247.2
Sunrise Hospital & Medical Center	502.1	519.4	499.1	512.7	519.5	509.5	521.6	530.5	484.3	467.3
University Medical Center	403.6	416.3	421.4	457.3	436.4	451.7	469.2	459.3	451.7	419.3
Valley Hospital Medical Center	265.5	259.3	261.9	270.8	274.2	279.8	253.7	267.1	277.0	271.9
Total Clark County	1,751.9	1,857.1	1,965.8	2,106.4	2,137.9	2,294.7	2,424.6	2,515.8	2,544.9	2,579.9
WASHOE COUNTY / CARSON CITY										
Carson Tahoe Regional Medical Center	66.6	69.0	72.3	80.2	81.1	78.2	88.0	113.4	105.4	106.54
Northern Nevada Medical Center	41.0	47.5	48.5	48.3	50.8	47.4	41.7	45.3	51.1	46.07
Renown Medical Center	251.0	260.8	294.7	314.7	330.5	336.5	352.6	349.4	345.3	374.58
Renown Medical Center - South Meadows						8.8	18.4	29.4	32.2	34.71
Saint Mary's Regional Medical Center	164.0	171.4	178.1	171.2	174.3	172.8	167.0	165.1	156.2	146.00
Sierra Surgery Hospital									5.3	6.45
Total Washoe County / Carson City	523.6	549.0	593.9	614.7	637.0	643.9	668.0	702.9	695.7	714.4
RURAL HOSPITALS										
Battle Mountain General Hospital	0.9	0.8	0.6	0.5	0.4	0.4	0.4	0.4	0.5	0.8
Boulder City Hospital	10.5	12.1	11.9	13.1	10.9	9.6	9.8	9.8	9.1	8.0
Carson Valley Medical Center						3.5	6.2	7.1	7.3	8.0
Churchill Community Hospital	18.6	17.3	15.3	16.0	15.0	16.6	18.0	15.9	17.6	17.7
Desert View										2.3
Grover C. Dils Medical Center	1.1	1.3	1.0	1.4	1.3	1.2	1.1	1.4	1.3	1.1
Humboldt General Hospital	5.6	5.5	5.9	4.2	2.8	4.0	5.7	4.0	6.8	5.8
Incline Village Community Hospital	1.0	0.3	0.3	0.3	0.3	0.2	0.3	0.2	0.2	0.2
Mesa View Regional Hospital						0.2	6.2	6.7	6.0	7.8
Mount Grant General Hospital	2.0	1.3	1.8	2.5	1.9	2.9	2.9	2.6	2.8	3.9
Northeastern Nevada Regional Hospital	16.5	20.1	21.8	21.9	21.0	18.0	19.6	21.9	18.5	17.2
Nye Regional Medical Center	1.4	0.8	2.5	2.5	2.5	2.2	1.9	1.6	1.2	1.4
Pershing General Hospital	1.1	1.2	1.2	0.9	1.4	1.1	1.3	2.7	3.4	3.1
South Lyon Medical Center	1.9	2.2	2.2	2.6	3.0	2.8	3.0	2.9	2.6	1.9
William B. Ririe Hospital	6.4	6.8	6.7	7.5	6.4	4.7	5.0	5.9	7.0	5.4
	67.0	69.7	71.2	73.4	67.0	67.5	81.4	83.1	84.3	84.6

Source: Nevada Hospital Utilization Report, All Beds (Table 1)

NEVADA ACUTE CARE HOSPITALS

OCCUPANCY PERCENTAGES

CALENDAR YEARS 1999 THROUGH 2008

FACILITY NAME	1999	2000	2001	2002	2003	2004	2005	2006	2007	2008
STATEWIDE	63.4%	64.0%	64.5%	66.8%	65.9%	64.1%	66.5%	67.2%	64.7%	61.1%
CLARK COUNTY										
Centennial Hills										33.7%
Desert Springs Hospital	75.5%	66.1%	50.5%	51.4%	0.0%	52.6%	61.5%	63.7%	65.0%	63.6%
MountainView Hospital	93.4%	77.9%	82.4%	87.8%	92.6%	94.7%	86.8%	86.6%	77.2%	79.5%
North Vista Hospital	59.4%	57.0%	57.1%	58.7%	58.3%	51.6%	54.7%	62.2%	69.8%	65.8%
St. Rose Dominican - Rose de Lima Campus	77.2%	78.9%	67.3%	74.9%	71.7%	69.7%	70.9%	70.8%	67.1%	70.2%
St. Rose Dominican - San Martin Campus								24.7%	38.2%	60.8%
St. Rose Dominican - Siena Campus		50.1%	80.1%	92.4%	90.6%	84.4%	88.0%	89.0%	89.1%	90.0%
Southern Hills Hospital & Medical Center					28.3%	36.3%	49.4%	50.6%	50.0%	50.0%
Spring Valley Hospital Medical Center						46.1%	59.2%	64.2%	72.7%	78.6%
Summerlin Hospital Medical Center	66.6%	76.4%	80.6%	85.3%	90.1%	80.3%	84.4%	88.6%	92.3%	88.0%
Sunrise Hospital & Medical Center	76.5%	79.0%	76.1%	78.2%	73.5%	72.7%	74.4%	75.6%	69.1%	66.7%
University Medical Center	79.5%	81.7%	80.2%	84.4%	80.2%	83.1%	85.1%	82.9%	76.8%	77.5%
Valley Hospital Medical Center	64.0%	62.3%	64.5%	66.7%	67.5%	68.9%	62.4%	66.1%	68.6%	67.3%
Clark County Average	73.3%	72.7%	71.2%	74.8%	72.4%	70.2%	72.8%	74.4%	71.7%	70.6%
WASHOE COUNTY / CARSON CITY										
Carson Tahoe Regional Medical Center	52.0%	53.6%	56.5%	62.6%	62.6%	59.7%	67.2%	65.9%	61.3%	61.9%
Northern Nevada Medical Center	41.4%	47.3%	48.5%	48.3%	50.8%	47.4%	41.7%	45.3%	51.1%	46.1%
Renown Regional Medical Center	49.2%	51.0%	57.8%	56.8%	62.5%	63.6%	66.1%	65.1%	64.2%	46.4%
Renown South Meadows Medical Center						24.3%	51.1%	55.6%	42.4%	45.7%
Saint Mary's Regional Medical Center	46.8%	48.7%	50.8%	48.8%	46.3%	45.5%	43.9%	43.5%	41.1%	38.4%
Sierra Surgery and Imaging LLC								36.3%	35.4%	43.0%
Washoe County / Carson City Average	47.8%	49.9%	54.1%	54.0%	55.9%	54.6%	56.4%	56.2%	54.1%	46.1%
RURAL COUNTIES										
Battle Mountain General Hospital	13.5%	9.3%	6.2%	7.0%	6.3%	6.2%	6.1%	2.0%	7.0%	6.5%
Boulder City Hospital	52.3%	60.7%	59.7%	65.6%	54.3%	48.1%	50.2%	48.6%	56.7%	12.0%
Carson Valley Medical Center						23.5%	41.7%	47.2%	31.8%	34.6%
Churchill Community Hospital	46.4%	43.1%	38.2%	40.1%	37.4%	41.4%	44.9%	35.1%	44.0%	59.2%
Desert View										9.5%
Grover C. Dils Medical Center	26.9%	32.2%	26.1%	35.1%	32.5%	29.3%	28.2%	9.0%	7.0%	5.5%
Humboldt General Hospital	25.3%	24.7%	26.8%	19.2%	12.9%	18.3%	26.1%	24.0%	30.7%	26.6%
Incline Village Community Hospital	5.2%	4.2%	3.7%	4.3%	8.2%	5.9%	6.6%	5.9%	4.4%	4.1%
Mesa View Regional Hospital						19.3%	24.8%	26.9%	24.0%	31.4%
Mount Grant General Hospital	18.4%	12.2%	16.8%	22.5%	17.4%	26.3%	26.3%	23.9%	25.4%	11.3%
Northeastern Nevada Regional Hospital	32.9%	40.1%	34.8%	29.2%	28.0%	24.0%	26.1%	23.4%	24.7%	23.0%
Nye Regional Medical Center	14.2%	16.2%	25.0%	25.1%	25.1%	21.8%	19.2%	15.7%	8.4%	9.7%
Pershing General Hospital	22.8%	24.5%	23.7%	18.2%	25.4%	15.6%	18.4%	12.4%	22.9%	8.9%
South Lyon Medical Center	13.7%	15.9%	15.6%	18.2%	21.4%	20.0%	21.2%	17.7%	18.6%	3.8%
William B. Ririe Hospital	20.7%	21.9%	29.3%	50.0%	42.9%	31.1%	33.1%	23.7%	28.1%	21.6%
	26.5%	27.5%	28.1%	29.0%	26.5%	22.4%	27.0%	27.6%	28.0%	26.0%

Source: Nevada Hospital Utilization Report, All Beds (Table 1)

NEVADA ACUTE CARE HOSPITALS

AVERAGE LENGTH OF STAY

CALENDAR YEARS 1999 THROUGH 2008

FACILITY NAME	1999	2000	2001	2002	2003	2004	2005	2006	2007	2008
STATEWIDE TOTAL	4.7	4.7	4.7	4.76	4.76	4.76	4.7	4.7	4.7	4.7
CLARK COUNTY										
Centennial Hills										3.0
Desert Springs Hospital	4.4	4.4	4.3	4.3	4.4	4.7	4.9	5.0	5.2	5.2
MountainView Hospital	5.5	5.3	5.3	4.8	5.1	4.3	4.3	4.2	4.3	4.5
North Vista Hospital	3.7	3.7	4.0	4.2	4.5	4.9	5.2	5.0	5.6	5.4
St. Rose Dominican - Rose de Lima Campus	3.7	3.8	4.1	4.6	4.7	4.5	4.3	4.3	4.0	4.3
St. Rose Dominican - San Martin Campus								3.5	3.6	4.1
St. Rose Dominican - Siena Campus		4.1	3.8	3.9	4.1	4.1	4.1	4.0	3.9	4.2
Southern Hills Hospital & Medical Center						4.8	4.6	4.4	4.4	4.1
Spring Valley Hospital Medical Center					3.6	4.0	3.7	4.2	4.4	4.3
Summerlin Hospital Medical Center	4.6	4.8	4.9	4.6	4.4	4.5	4.8	4.8	4.7	4.6
Sunrise Hospital & Medical Center	4.8	4.9	4.8	5.0	5.2	5.2	5.2	5.5	5.6	5.5
University Medical Center	5.4	5.4	5.4	5.6	5.5	5.5	5.5	5.6	5.5	5.5
Valley Hospital Medical Center	5.1	5.2	5.3	5.1	4.9	5.0	4.8	4.9	4.8	4.9
Total Clark County	4.8	4.8	4.8	4.8	4.9	4.8	4.8	4.9	4.8	4.8
WASHOE COUNTY / CARSON CITY										
Carson Tahoe Regional Medical Center	3.2	3.3	3.4	3.5	3.5	3.4	3.4	4.0	3.8	4.0
Northern Nevada Medical Center	5.7	6.0	5.7	5.7	5.6	5.6	5.1	5.1	4.8	4.6
Renown Regional Medical Center	4.9	4.8	4.7	4.9	5.1	5.0	4.9	5.0	5.0	5.2
Renown South Meadows Medical Center						3.9	3.9	4.2	4.0	3.9
Saint Mary's Regional Medical Center	4.7	4.6	4.6	5.0	5.3	5.3	4.6	2.3	4.4	4.2
Sierra Surgery and Imaging LLC									2.5	2.6
Total Washoe County / Carson City	4.6	4.5	4.5	4.7	4.9	4.8	4.6	4.6	4.6	4.6
RURAL HOSPITALS										
Battle Mountain General Hospital	2.6	3.0	3.2	3.4	3.1	3.1	2.7	2.7	2.5	3.1
Boulder City Hospital *	4.1	4.3	4.1	4.5	4.0	3.7	3.7	3.7	3.9	3.0
Carson Valley Medical Center						2.4	3.0	3.6	3.8	3.7
Churchill Community Hospital	3.0	3.1	3.0	3.2	3.1	3.2	3.2	1.7	2.8	3.7
Desert View										2.1
Grover C. Dils Medical Center	2.6	2.7	3.3	2.9	2.6	2.8	2.8	3.2	3.4	3.1
Humboldt General Hospital	2.6	2.8	3.6	3.0	2.5	3.1	2.8	2.5	2.9	3.1
Incline Village Community Hospital										3.2
Mesa View Regional Hospital						2.5	2.5	2.4	2.7	2.7
Mount Grant General Hospital	3.4	3.2	2.9	3.1	3.0	3.2	3.2	3.6	3.7	4.0
Northeastern Nevada Regional Hospital	2.6	2.8	2.5	3.0	3.1	2.9	3.0	3.1	2.9	2.8
Nye Regional Medical Center	2.8	2.5	2.8	2.1	2.1	1.8	2.0	2.2	2.0	2.2
Pershing General Hospital	3.2	2.9	2.7	3.9	4.6	3.0	3.0	3.8	4.0	5.3
South Lyon Medical Center	2.9	3.4	3.1	3.0	3.3	2.8	2.7	2.7	2.8	2.8
William B. Ririe Hospital	2.6	2.7	2.5	2.8	3.0	2.7	2.7	2.8	3.0	2.3
Total Rural Hospitals	3.4	3.4	3.5	3.7	3.6	3.2	3.3	2.9	3.3	3.0

Note * - 2006 data is estimated for Boulder City.

Source: Nevada Hospital Utilization Report, All Beds (Table 1)

NEVADA ACUTE CARE HOSPITALS
ADMISSIONS PER 1,000 POPULATION
CALENDAR YEARS 1999 THROUGH 2008

	1999	2000	2001	2002	2003	2004	2005	2006	2007	2008
NEVADA										
Admissions	184,059	192,877	205,751	213,379	213,367	229,885	246,154	254,845	256,935	262,802
Population Estimate	1,961,660	2,058,606	2,132,498	2,206,022	2,296,566	2,410,768	2,518,869	2,623,050	2,718,337	2,783,733
Admissions/1,000 Nevada	93.8	93.7	96.5	96.7	92.9	95.4	97.7	97.2	94.5	94.4
CLARK COUNTY										
Admissions	134,800	141,309	150,602	158,694	160,091	173,462	183,712	187,575	191,860	196,245
Population Estimate	1,337,400	1,418,719	1,485,855	1,549,657	1,620,748	1,715,337	1,796,380	1,874,837	1,954,319	1,967,716
Admissions/1,000 Clark County	100.8	99.6	101.4	102.4	98.8	101.1	102.3	100.0	98.2	99.7
WASHOE COUNTY / CARSON CITY										
Admissions	41,960	44,182	47,795	47,353	46,482	48,802	53,449	56,781	55,822	56,402
Population Estimate	381,809	392,812	409,218	415,029	429,844	445,596	456,253	468,448	475,784	481,433
Admissions/1,000 Washoe County / Carson City	109.9	112.5	116.8	114.1	108.1	109.5	117.1	121.2	117.3	117.2
RURAL COUNTIES										
Admissions	7,299	7,386	7,354	7,332	6,794	7,621	8,993	10,489	9,253	10,155
Population Estimate	242,451	247,075	237,425	241,336	245,974	249,835	266,236	279,765	288,234	334,584
Admissions/1,000 All Rural Counties	30.1	29.9	31.0	30.4	27.6	30.5	33.8	37.5	32.1	30.4

Source:

Nevada Hospital Utilization Report, All Beds (Table 1)

Population information from Nevada State Demographer

NEVADA ACUTE CARE HOSPITALS
INPATIENT DAYS PER 1,000 POPULATION
CALENDAR YEARS 1999 THROUGH 2008

	1999	2000	2001	2002	2003	2004	2005	2006	2007	2008
NEVADA - STATEWIDE										
Inpatient Days	856,659	900,333	955,825	1,015,139	1,033,229	1,097,392	1,154,813	1,199,844	1,210,190	1,236,578
Population Estimate	1,961,660	2,058,606	2,132,498	2,206,022	2,296,566	2,410,768	2,518,869	2,623,050	2,718,337	2,783,733
Inpatient Days/1,000 Nevada	436.7	437.4	448.2	458.3	449.9	455.2	458.5	457.4	445.2	444.2
CLARK COUNTY										
Inpatient Days	645,126	678,798	717,521	768,872	780,363	839,884	884,993	914,613	928,873	944,240
Population Estimate	1,337,400	1,418,719	1,485,855	1,549,657	1,620,748	1,715,337	1,796,380	1,874,837	1,954,319	1,967,716
Inpatient Days/1,000 Clark County	482.4	478.5	482.9	499.7	481.5	489.6	492.7	487.8	475.3	479.9
WASHOE COUNTY / CARSON CITY										
Inpatient Days	191,273	200,309	216,785	224,354	232,506	235,627	243,792	258,531	253,934	261,446
Population Estimate	381,809	392,812	409,218	415,029	429,844	445,596	456,253	468,448	475,784	481,433
Inpatient Days/1,000 Washoe County / Carson City	501.0	509.9	529.8	540.6	540.9	528.8	534.3	551.9	533.7	543.1
RURAL COUNTIES										
Inpatient Days	20,260	21,226	21,519	21,913	20,360	21,881	26,028	26,700	27,383	30,892
Population Estimate	242,451	247,075	237,425	241,336	245,974	249,835	266,236	279,765	288,234	334,584
Inpatient Days/1,000 Rural Counties	83.6	85.9	90.6	90.8	82.8	87.6	97.8	95.4	95.0	92.3

Source:

Nevada Hospital Utilization Report, All Beds (Table 1)

Population information from Nevada State Demographer

NEVADA ACUTE CARE HOSPITALS
AVERAGE LICENSED BEDS PER 1,000 POPULATION
CALENDAR YEARS 1999 THROUGH 2008

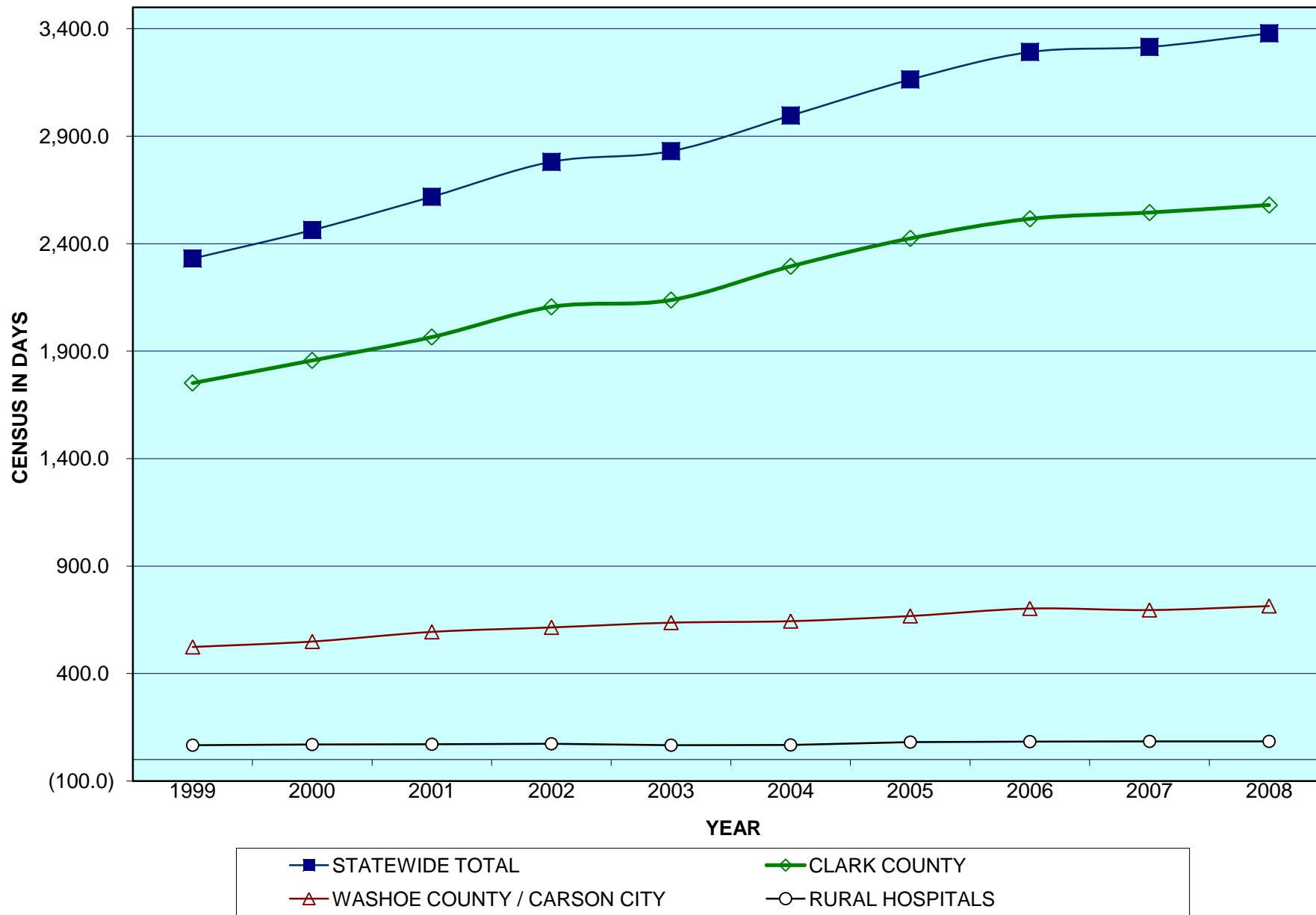
	1999	2000	2001	2002	2003	2004	2005	2006	2007	2008
NEVADA										
Licensed Beds	3,684	3,854	4,059	4,140	4,298	4,682	4,723	4,921	5,107	5,533
Population Estimate	1,961,660	2,058,606	2,132,498	2,206,022	2,296,566	2,410,768	2,518,869	2,623,050	2,718,337	2,783,733
Beds/1,000 Nevada	1.9	1.9	1.9	1.9	1.9	1.9	1.9	1.9	1.9	2.0
CLARK COUNTY										
Licensed Beds	2,391	2,561	2,761	2,823	2,955	3,269	3,305	3,385	3,551	3,657
Population Estimate	1,337,400	1,418,719	1,485,855	1,549,657	1,620,748	1,715,337	1,796,380	1,874,837	1,954,319	1,967,716
Beds/1,000 Clark County	1.8	1.8	1.9	1.8	1.8	1.9	1.8	1.8	1.8	1.9
WASHOE COUNTY/ CARSON CITY										
Licensed Beds	1,097	1,097	1,097	1,114	1,140	1,180	1,185	1,262	1,285	1,551
Population Estimate	381,809	392,812	409,218	415,029	429,844	445,596	456,253	468,448	475,784	481,433
Beds/1,000 Washoe County / Carson City	2.9	2.8	2.7	2.7	2.7	2.6	2.6	2.7	2.7	3.2
RURAL COUNTIES										
Licensed Beds	196	196	201	203	203	233	233	274	291	325
Population Estimate	242,451	247,075	237,425	241,336	245,974	249,835	266,236	279,765	288,234	334,584
Beds/1,000 Rural Counties	0.8	0.8	0.8	0.8	0.8	0.9	0.9	1.0	1.0	1.0

Source:

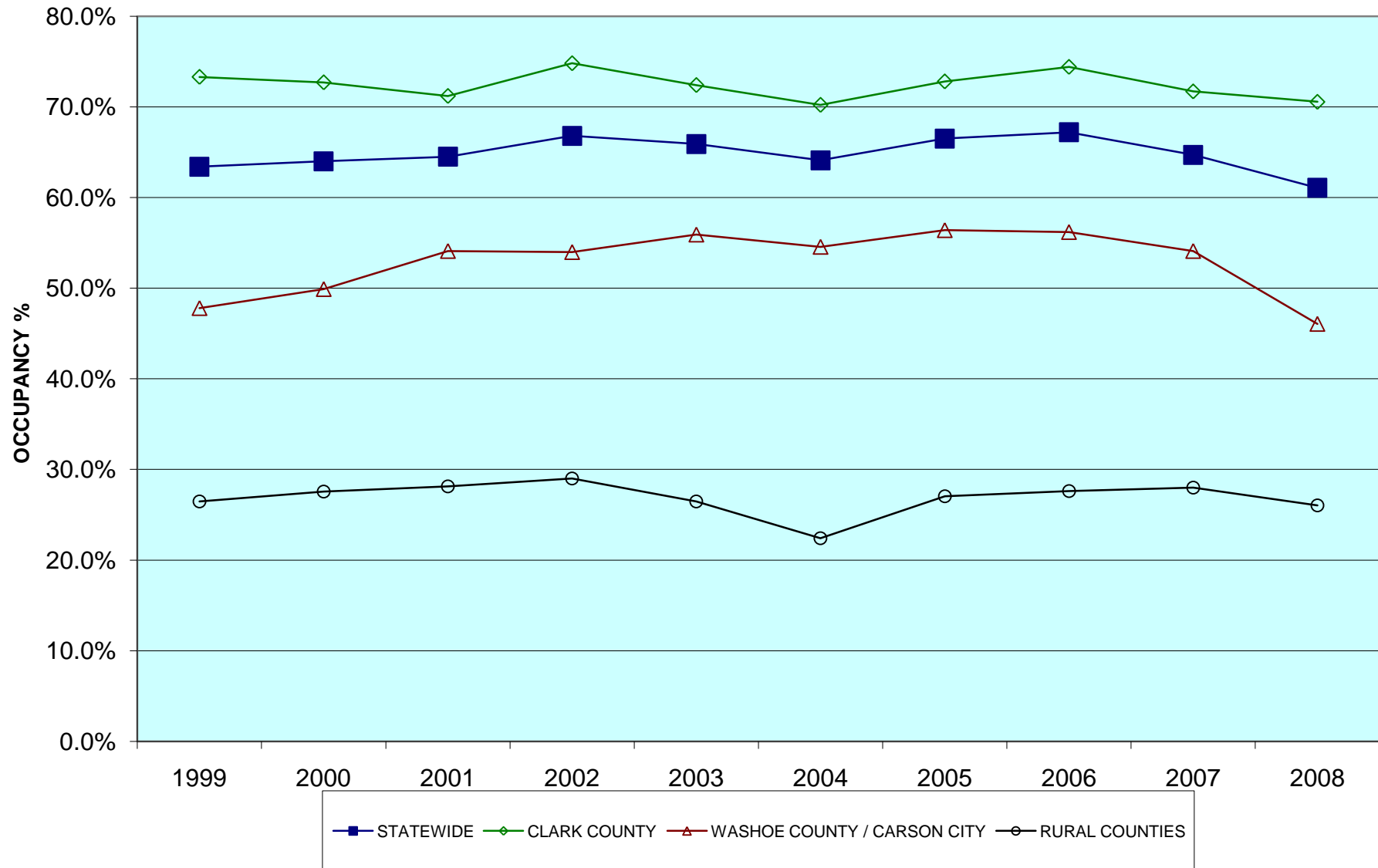
Nevada Hospital Utilization Report, All Beds (Table 1)

Population information from Nevada State Demographer

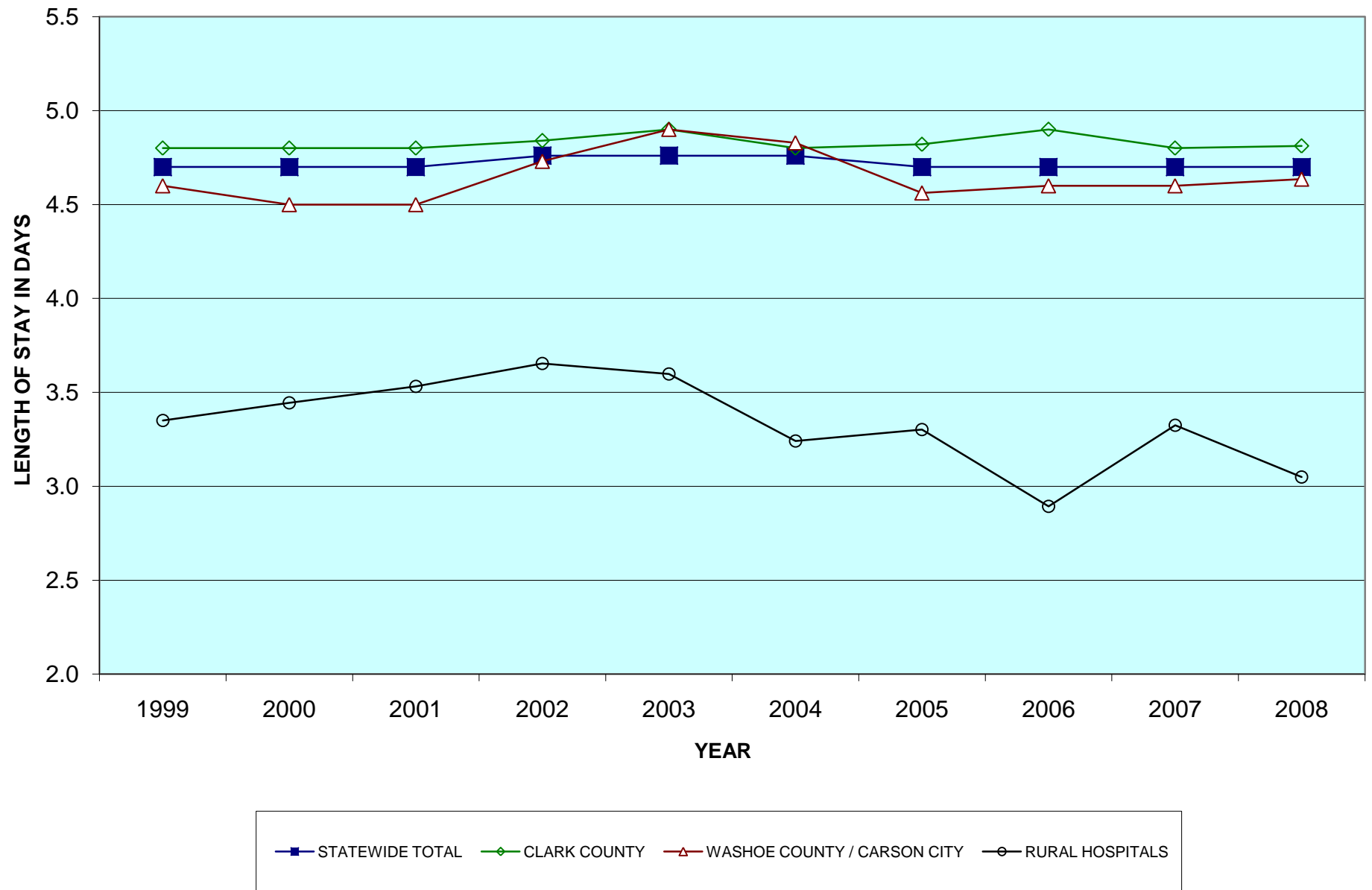
NEVADA ACUTE CARE HOSPITALS AVERAGE DAILY CENSUS



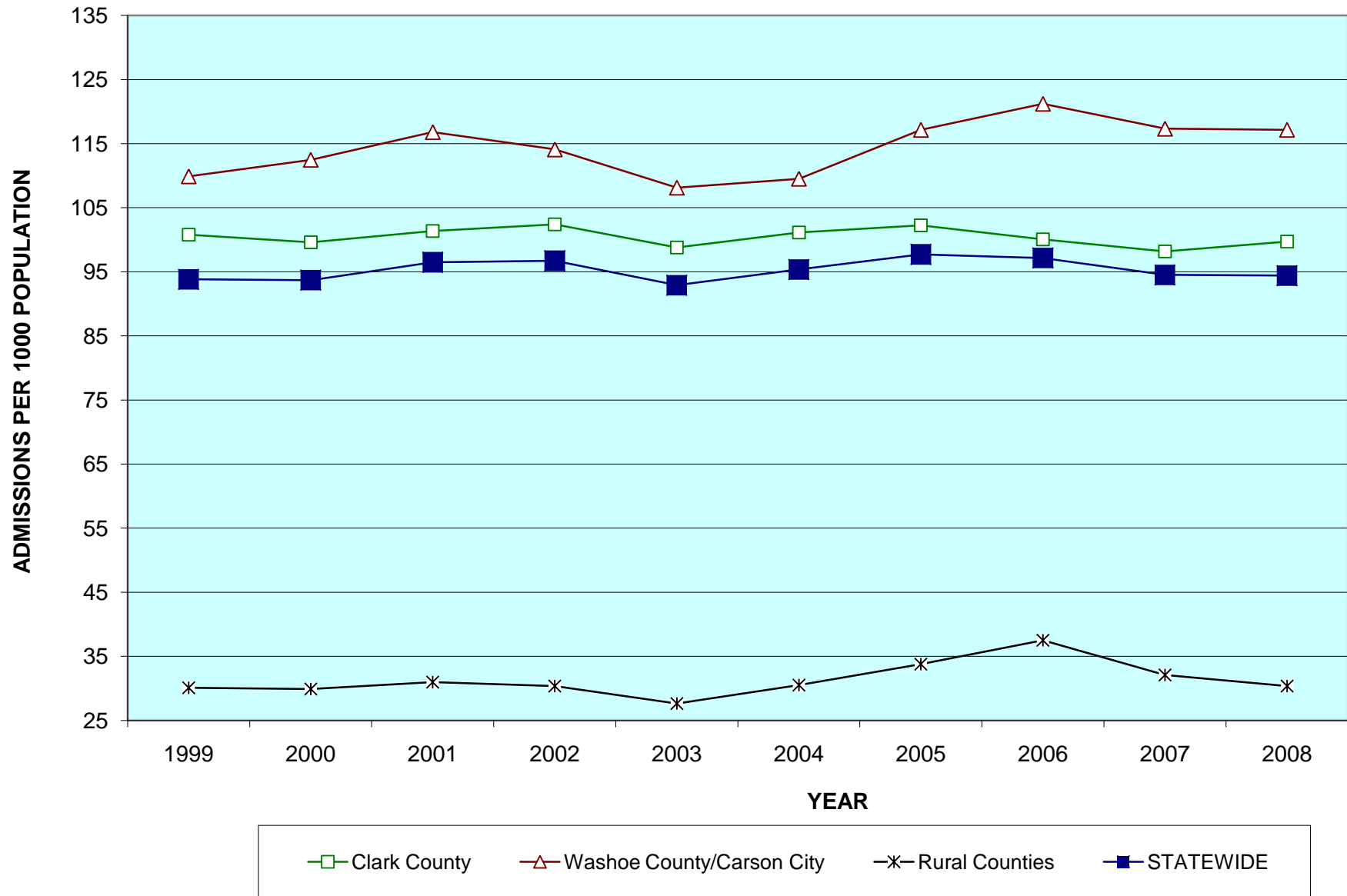
NEVADA ACUTE CARE HOSPITALS
OCCUPANCY PERCENTAGES



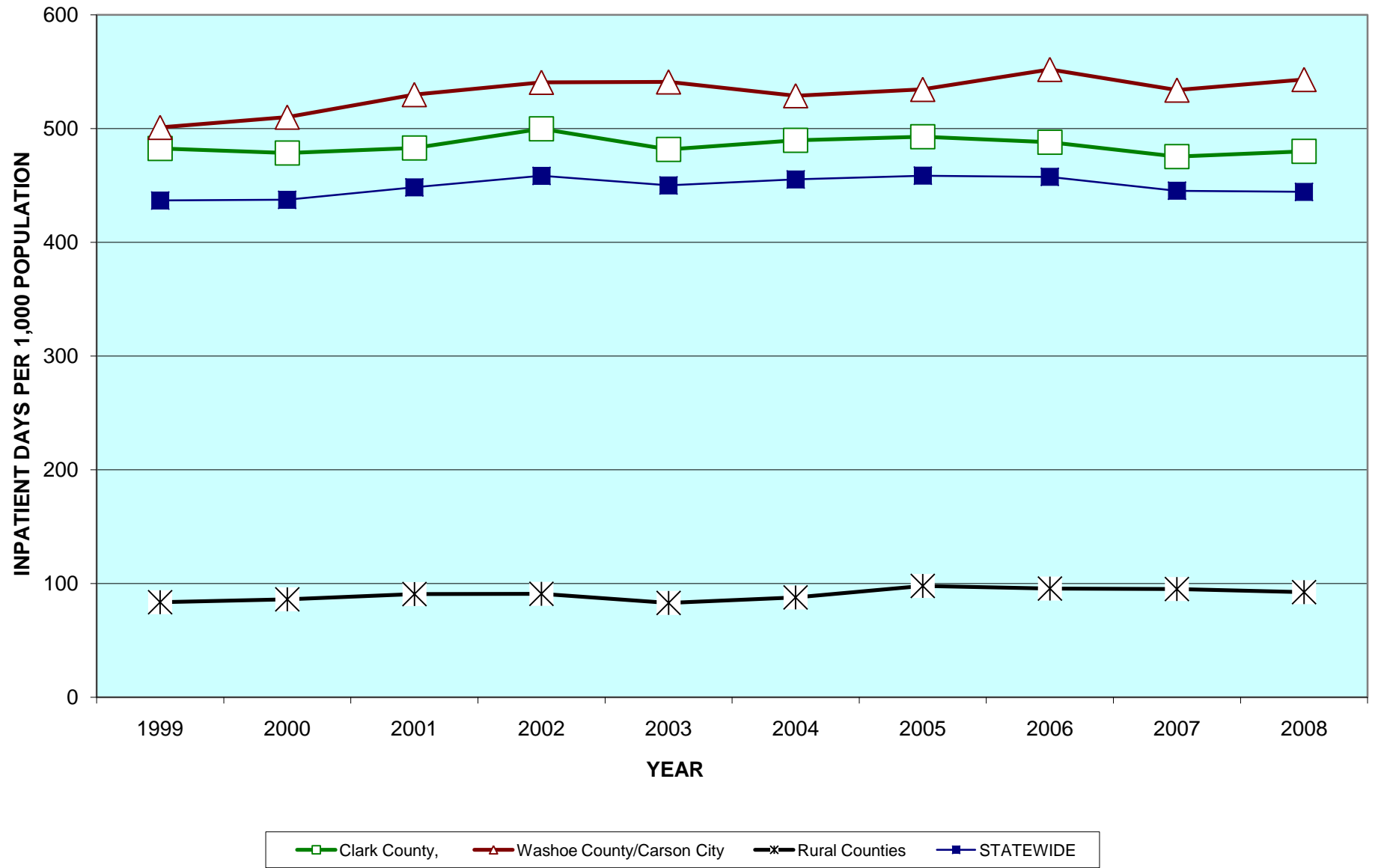
NEVADA ACUTE CARE HOSPITALS
AVERAGE LENGTH OF STAY



NEVADA ACUTE CARE HOSPITALS
ADMISSIONS PER 1,000 POPULATION



NEVADA ACUTE CARE HOSPITALS
INPATIENT DAYS PER 1,000 POPULATION



NEVADA ACUTE CARE HOSPITALS
BEDS PER 1,000 POPULATION

