

DISCLAIMER

Electronic versions of the exhibits in these minutes may not be complete.

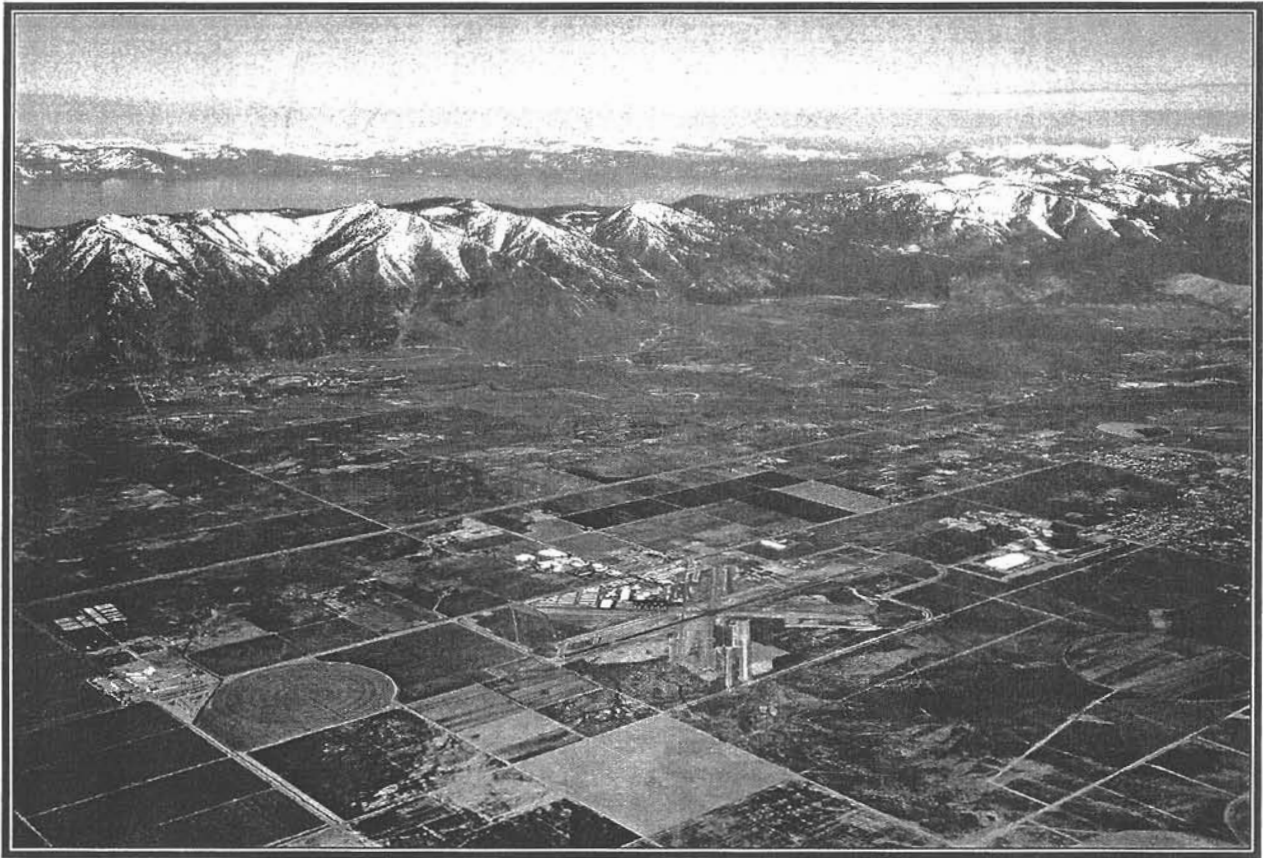
This information is supplied as an informational service only and should not be relied upon as an official record.

Original exhibits are on file at the Legislative Counsel Bureau Research Library in Carson City.

Contact the Library at (775) 684-6827 or library@lcb.state.nv.us.

Presentation to
Assembly Government Affairs

Douglas County, NV



Presented by
Doug N. Johnson, Chairman

Douglas County Board of Commissioners

February 9, 2007

Table of Contents

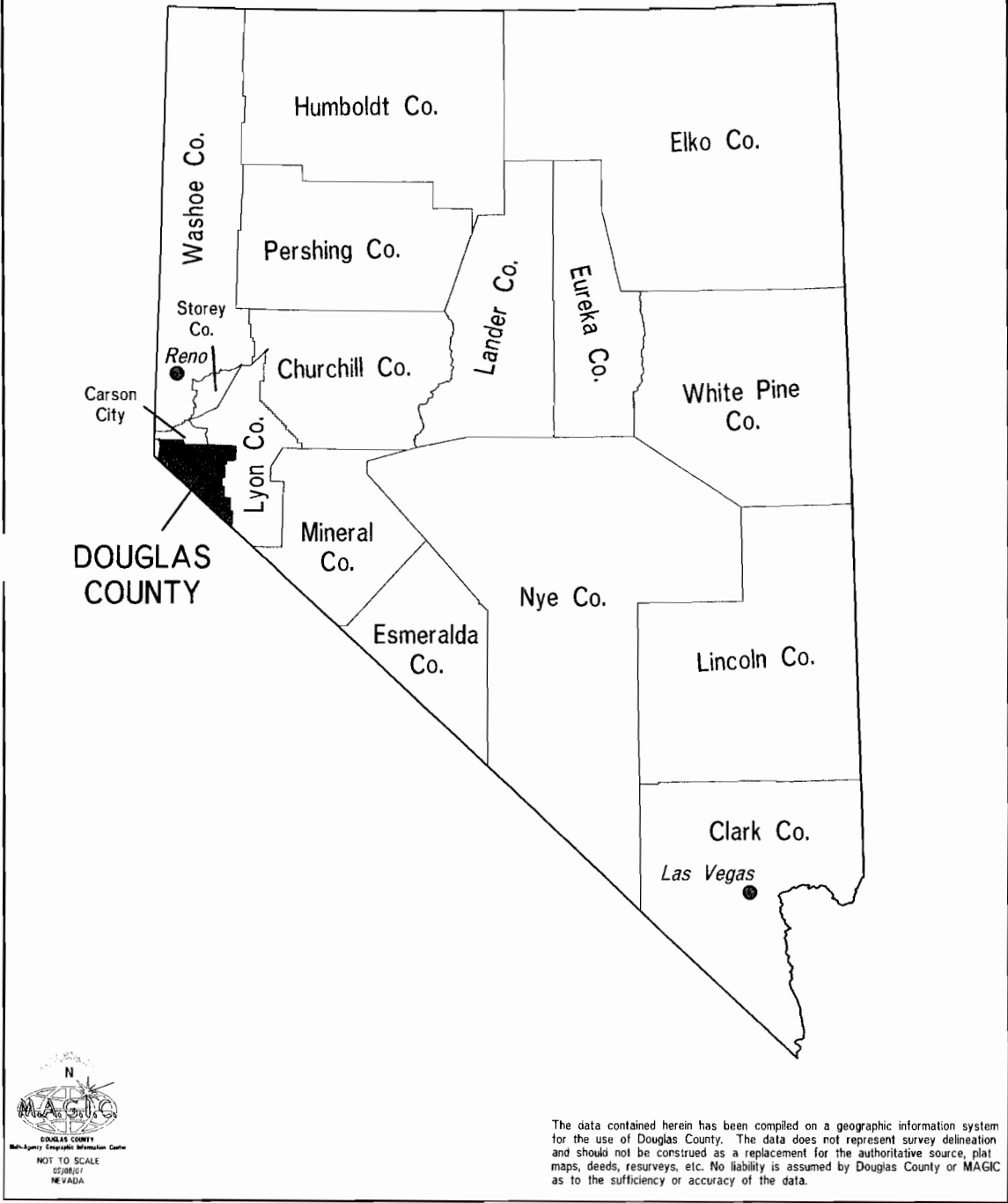
I. Introduction to Douglas County

Douglas County Vicinity Map (Nevada Counties)	
Douglas County Area Map	
About Douglas County	1
Organizational Chart	5
Douglas County Elected and Appointed Officials	6
Board Vision, Mission and Strategic Directions.....	7

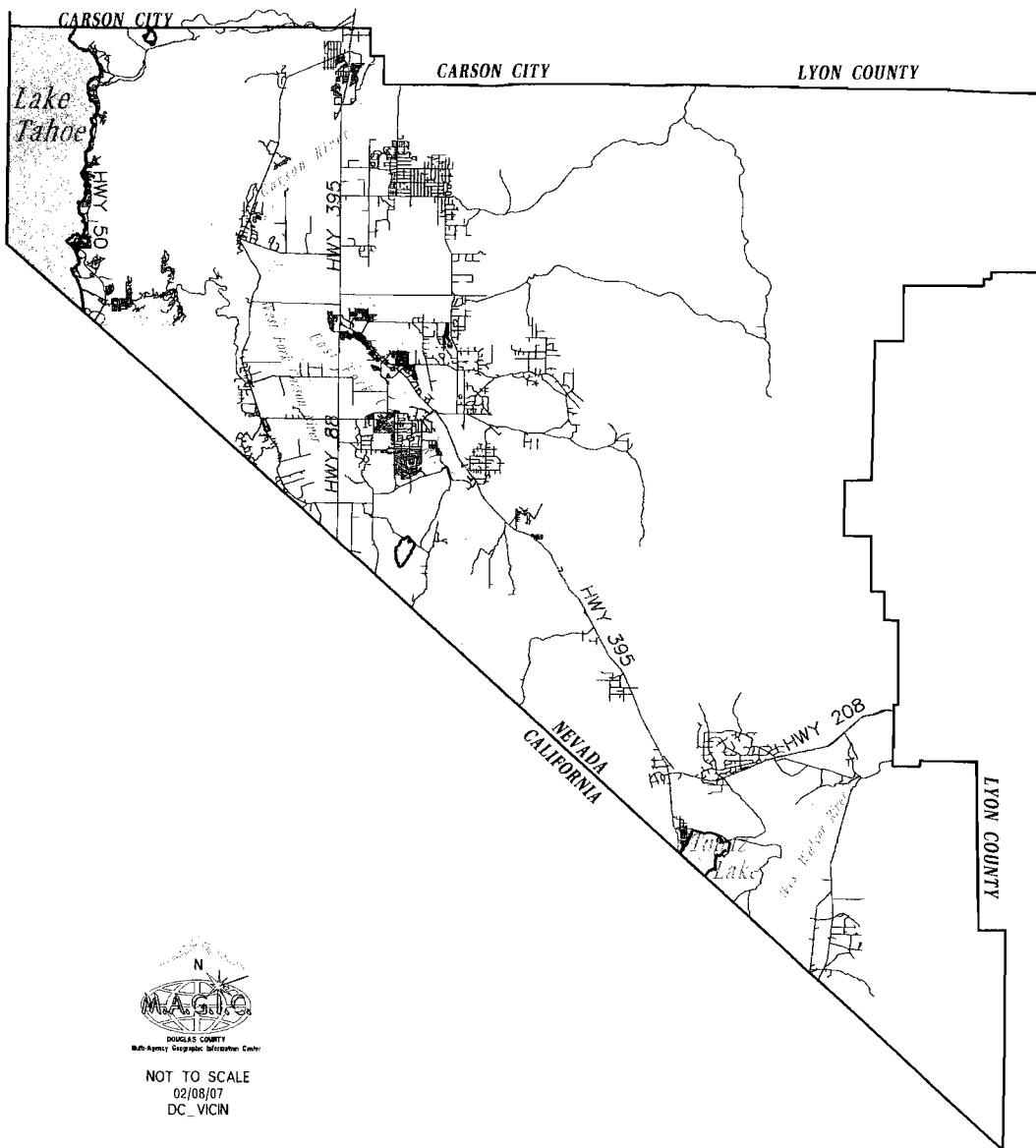
II. General Overview & Key County Issues

Overview of Douglas County	9
Key County Issues	10
FY06-07 Revenues & Expenditures – All Funds	11
FY06-07 General Fund Revenues & Expenditures	12
Douglas County Public Lands Map	
Economic Diversification	13
Sales Tax Growth	13
Taxable Sales & Tourism Efforts	14
Room Tax Revenues	15
Assessed Valuation	16
10 Largest Assessed Values.....	17
Redevelopment Agency Assessed Valuation.....	17
Property Tax Rate History & Statewide Overlapping Tax Rates	18
Housing Cost Trend	19
Age Trend	20
Key Legislative Items	21

Douglas County Vicinity Map



DOUGLAS COUNTY, NEVADA



The data contained herein has been compiled on a geographic information system for the use of Douglas County. The data does not represent survey delineation and should not be construed as a replacement for the authoritative source, plat maps, deeds, resurveys, etc. No liability is assumed by Douglas County or MAGIC as to the sufficiency or accuracy of the data.

About Douglas County

Douglas County is a political subdivision of the State of Nevada, operating under provisions of Title 20 of *Nevada Revised Statutes* (NRS). On November 25, 1861, Douglas County became one of the first nine counties established by the first Nevada Territorial Legislature, with the County seat located in the town of Genoa. The County was retained when the territory became a state on October 31, 1864. Douglas County is named for Stephen A. Douglas, a former United States Senator from Illinois, who opposed Lincoln in the 1860 election for President.

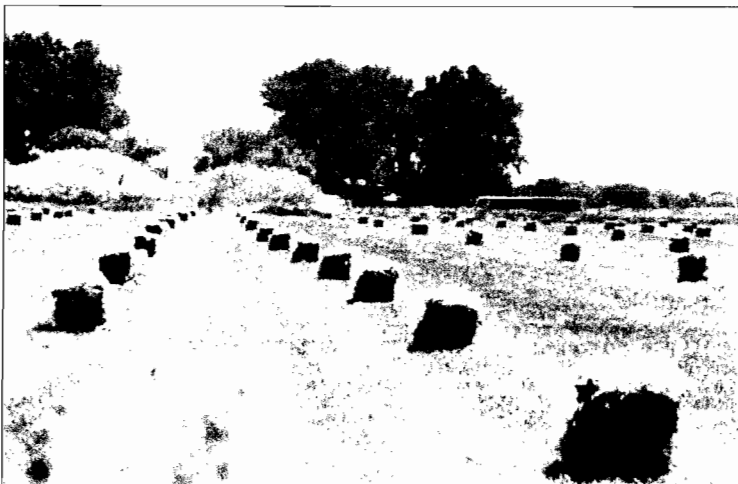
Douglas County is the site of some of Nevada's earliest development. Many small communities are scattered along the base of the Sierra Nevada Mountain Range, remnants of some of the first towns in the state. A good number of these communities were established in the 1850's as trading posts and centers of ranching and farming. Genoa, originally known as Mormon Station, is the oldest of these and was settled in 1851. In 1910, the Douglas County Courthouse in Genoa was badly damaged by fire. This disaster, along with a population decline within the town of Genoa and subsequent growth in the town of Minden, prompted the Nevada Legislature to change the location of the County seat during the 1915 session. Today, the County seat is located in the town of Minden.

County Government

County residents elect officials to provide community leadership and administration. Currently, the County operates under a commission-manager form of government. Douglas County government includes elected officials, departments, boards, commissions, and committees.

The Board of Commissioners, the governing body of the County, is comprised of five members who are elected at-large by district to serve four-year, overlapping terms. Commissioners perform this community service with limited compensation. The Chair of the Board, elected by the five members, presides over public meetings. The Board of Commissioners provide County leadership, develop policies to guide the County in delivering services and achieving community goals, and encourage resident awareness and involvement.

The Board of Commissioners also preside as the Board of Adjustments, Liquor Board, License Board, Tahoe-Douglas Transportation District Board, Water District Board, Redevelopment Agency Board, and East Fork Fire District and Paramedic District Boards. The County Commissioners hold meetings as a Board on the first Thursday of each month in the Historic County Court House in Minden, Nevada, and



on the third Thursday of each month in Stateline, Nevada, in the Douglas County Administrative Services Building. Meetings will occasionally take place on the second Thursday of the month for special meetings and workshops. The agendas are posted at several locations, including: the Historic County Courthouse, the Minden Inn, the Judicial/Law Enforcement Building, the Douglas County Libraries in Minden and Zephyr Cove, and the post offices in Gardnerville, Genoa, Minden, Roundhill, Kingsbury, and Glenbrook.

The unincorporated Towns of Gardnerville, Genoa, and Minden are governed by their own separate elected boards in those areas for which authority has been granted to them.

The Douglas County Library is governed by a Board of Trustees and administered by an appointed Library Director. An appointed Fire Chief oversees the East Fork Fire & Paramedic Districts, all East Fork Fire stations, including paid staff and volunteer firefighters. Fire and paramedic services in the Tahoe area are provided by the Tahoe Douglas Fire District that has a separate elected Board.



The various departments, boards, commissions, and committees within Douglas County government provide a full range of services to residents. Services provided by the County include:

- Airport
- Animal Care and Services
- Building Safety
- Fire Protection and Paramedic Services
- General Administrative Services
- Zoning and Code Enforcement Clerk
- Law Enforcement
- Street Construction and Maintenance
- District and Justice Courts
- District Attorney
- Assessor
- Clerk
- Parks and Recreation
- Water and Sewer Services
- Welfare and Social Services
- Weed Control

Geographic Information

The County covers an approximate area of 751 square miles, and is located in the western portion of the State. Douglas County borders the State of California to the west, Lyon County to the east, and the state capital of Carson City to the north. Included within the County's boundaries are portions of the Sierra



Nevada Mountain Range, Lake Tahoe, Topaz Lake, and the Carson and Walker Rivers. Since statehood, the boundaries of Douglas County have only been realigned two times: between Douglas County and Ormsby County (now Carson City) in 1965, and between Douglas County and Lyon County in 1967. Elevations within the County vary from a low of 4,625 feet on the valley floor to a high of 9,500 feet at East Peak. The proximity of the