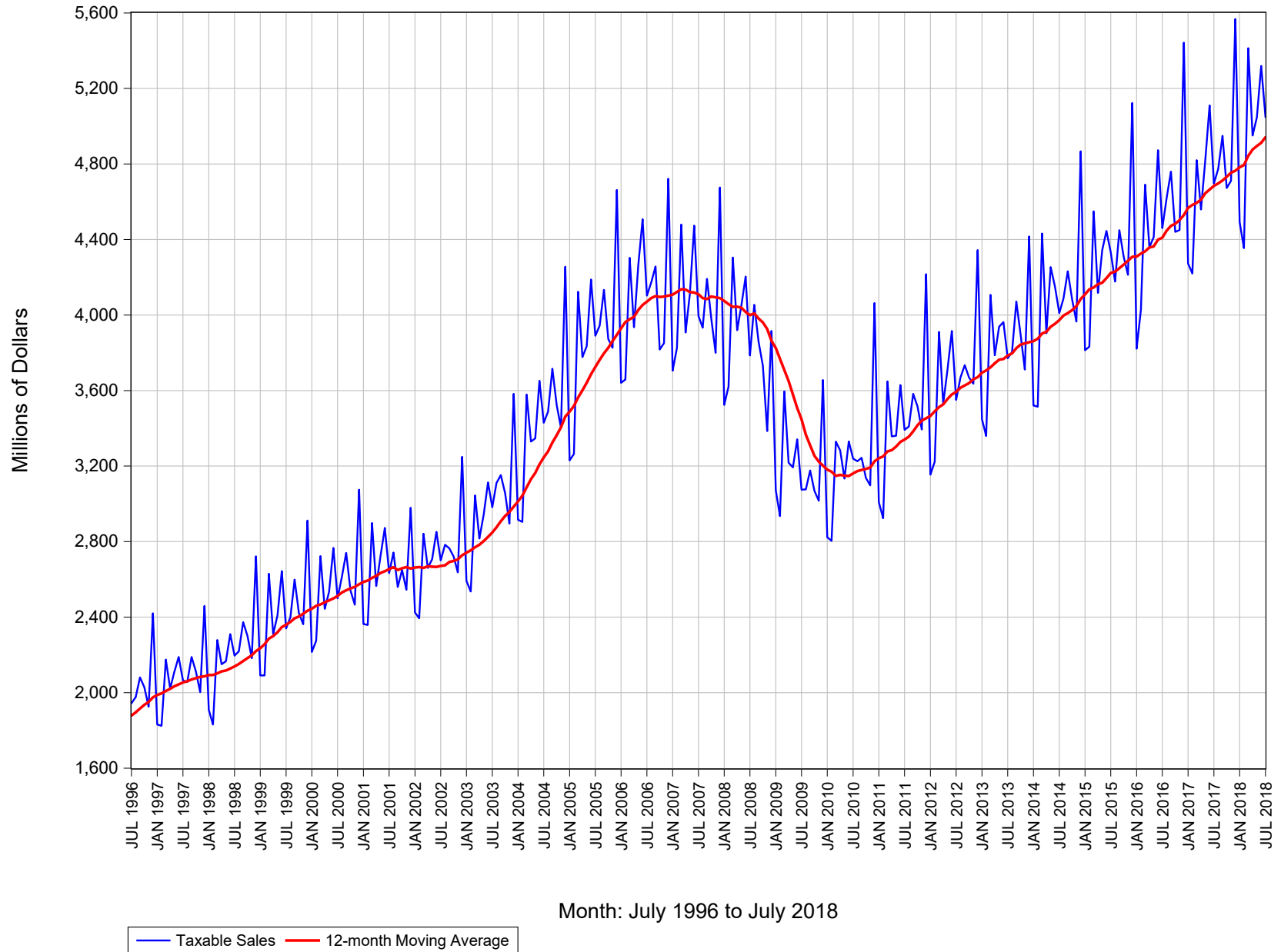
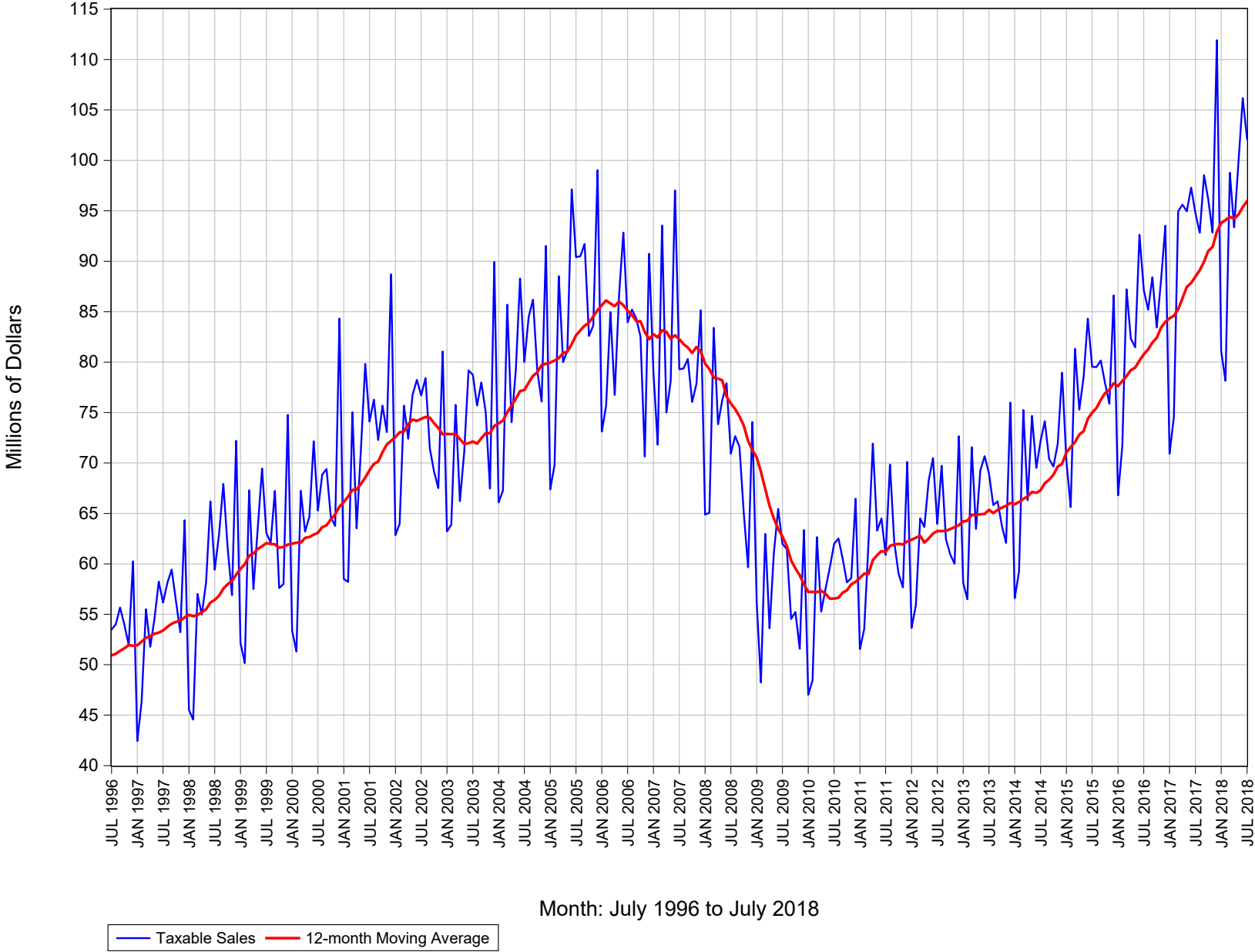


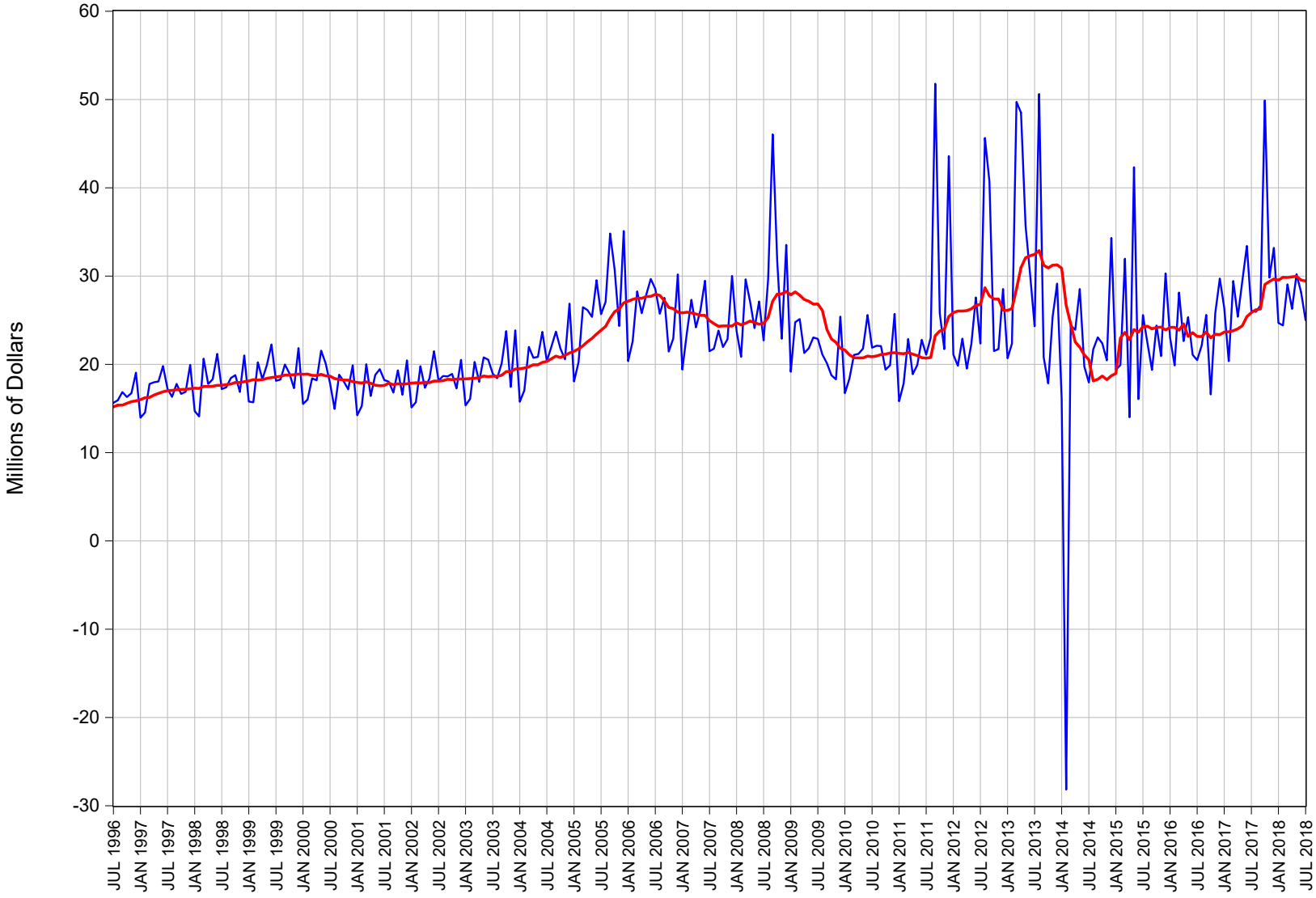
Statewide Taxable Sales: Monthly



Carson City Taxable Sales: Monthly



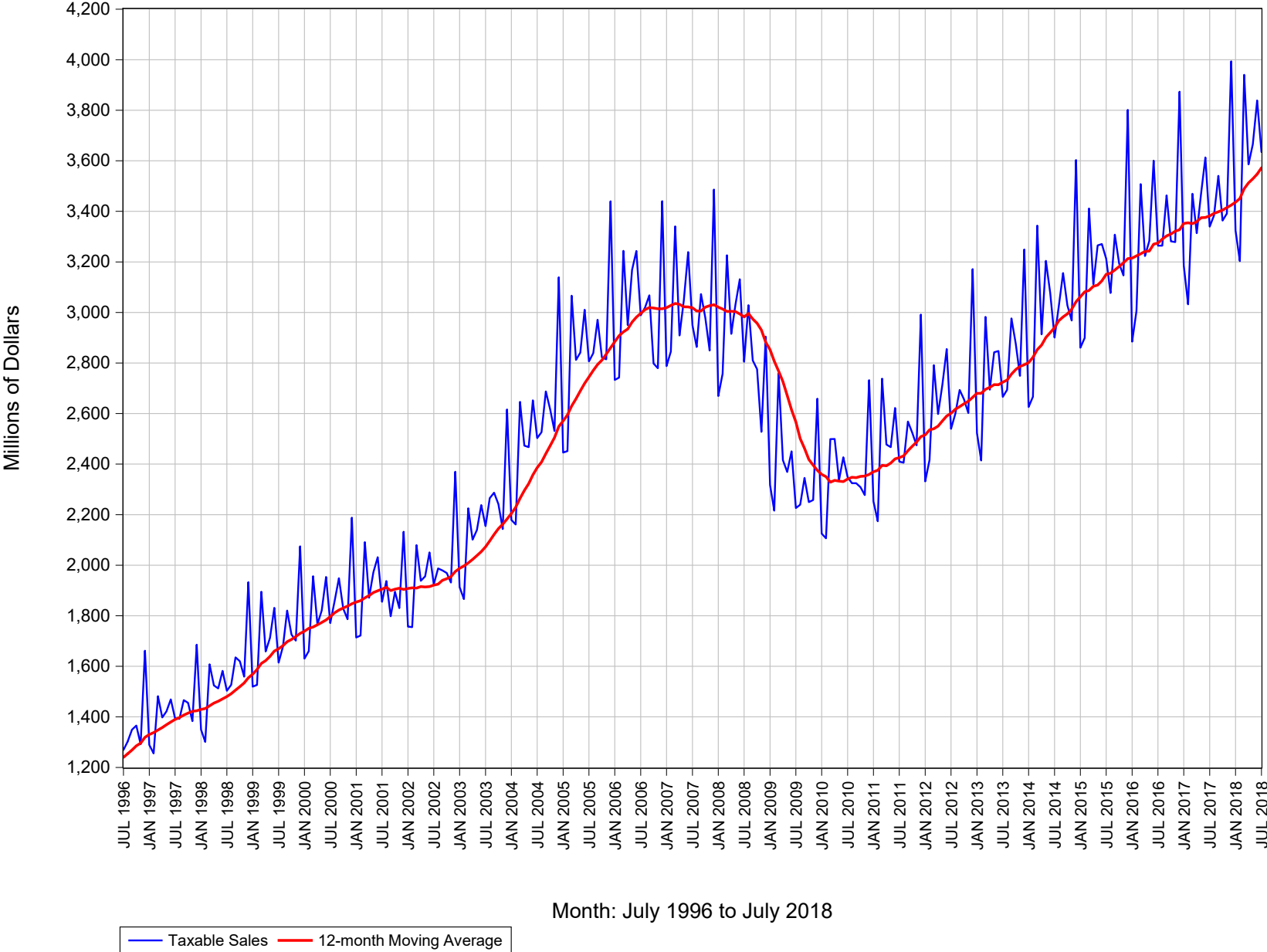
Churchill County Taxable Sales: Monthly



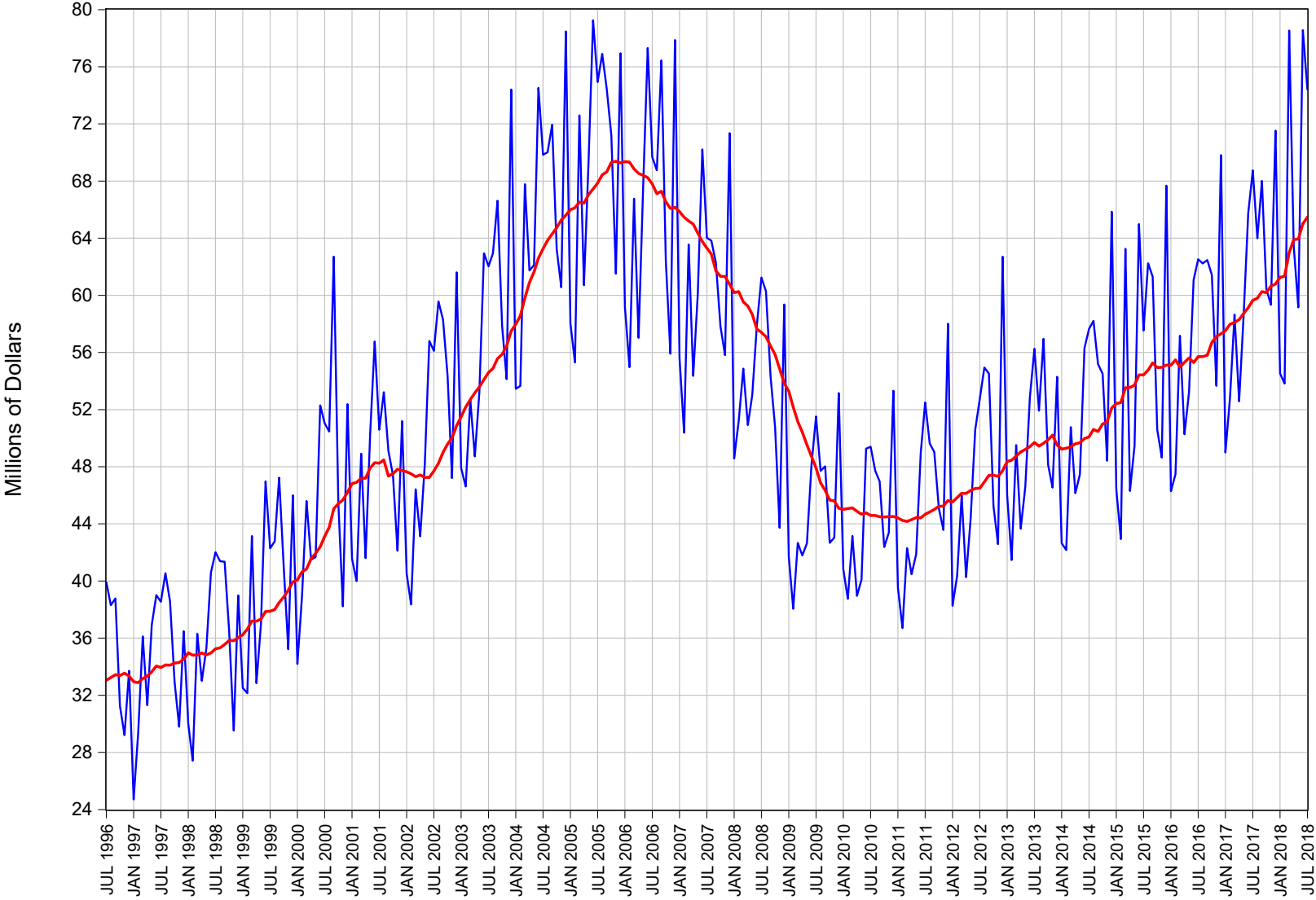
Month: July 1996 to July 2018

— Taxable Sales — 12-month Moving Average

Clark County Taxable Sales: Monthly



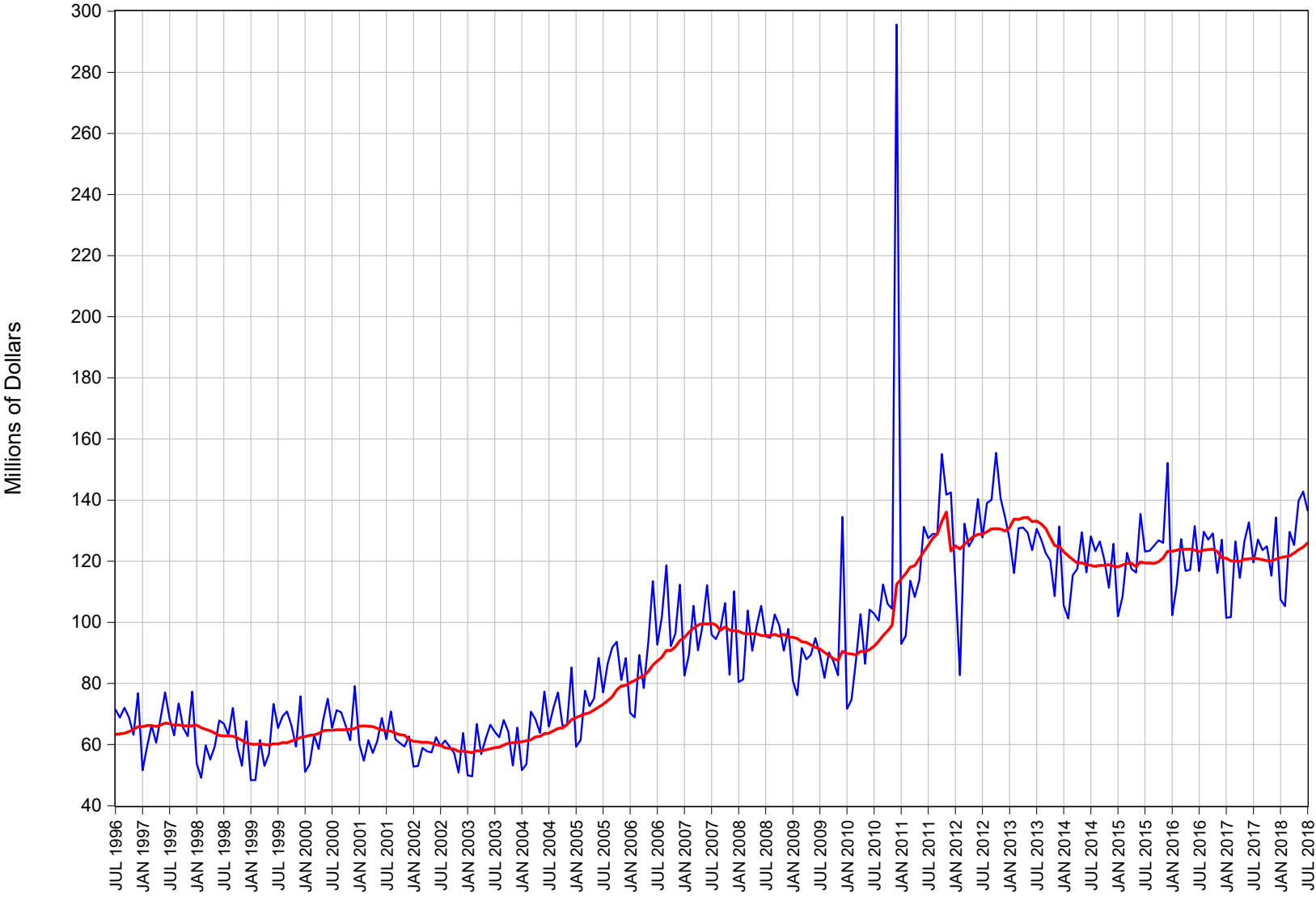
Douglas County Taxable Sales: Monthly



Month: July 1996 to July 2018

— Taxable Sales — 12-month Moving Average

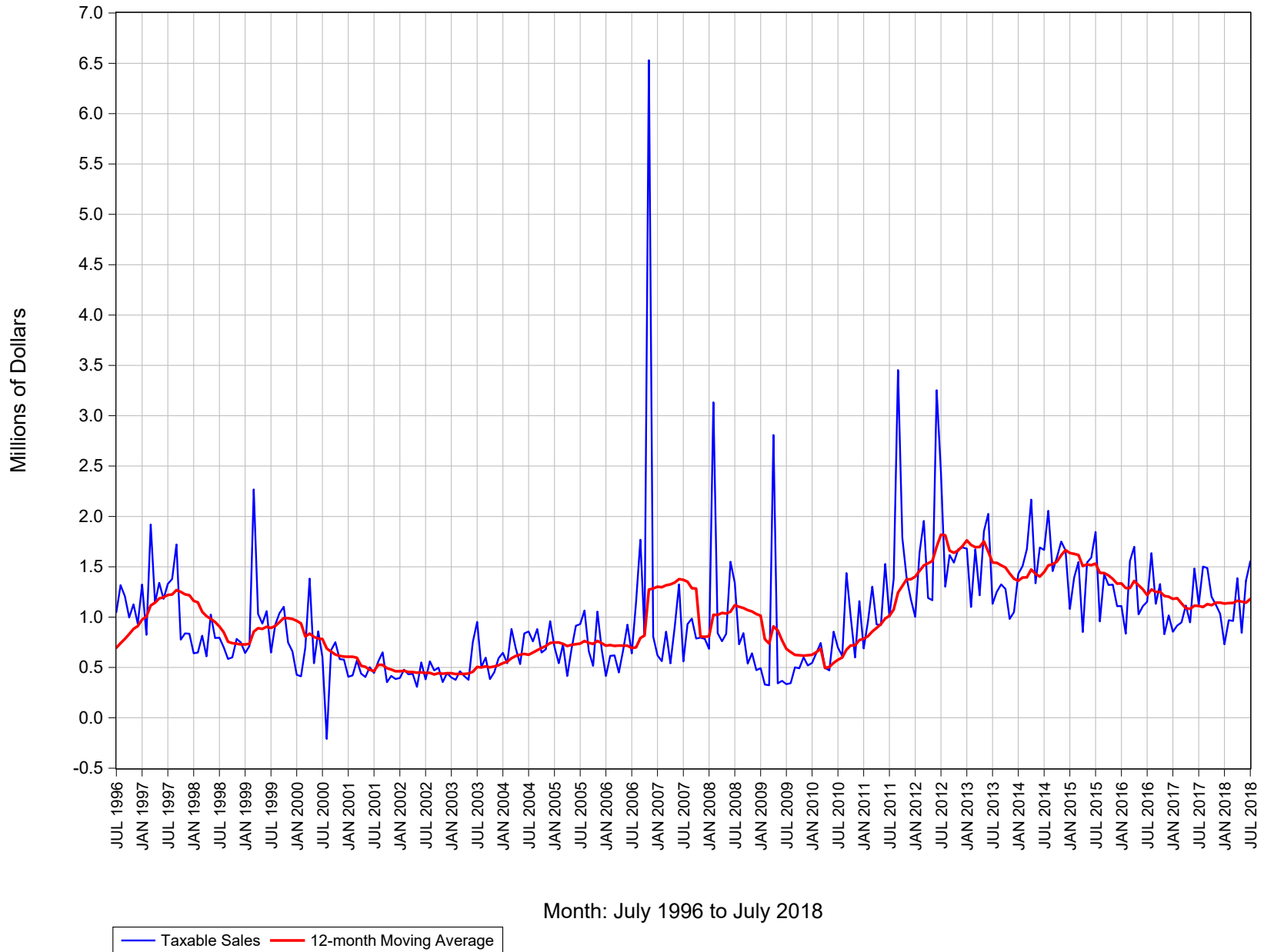
Elko County Taxable Sales: Monthly



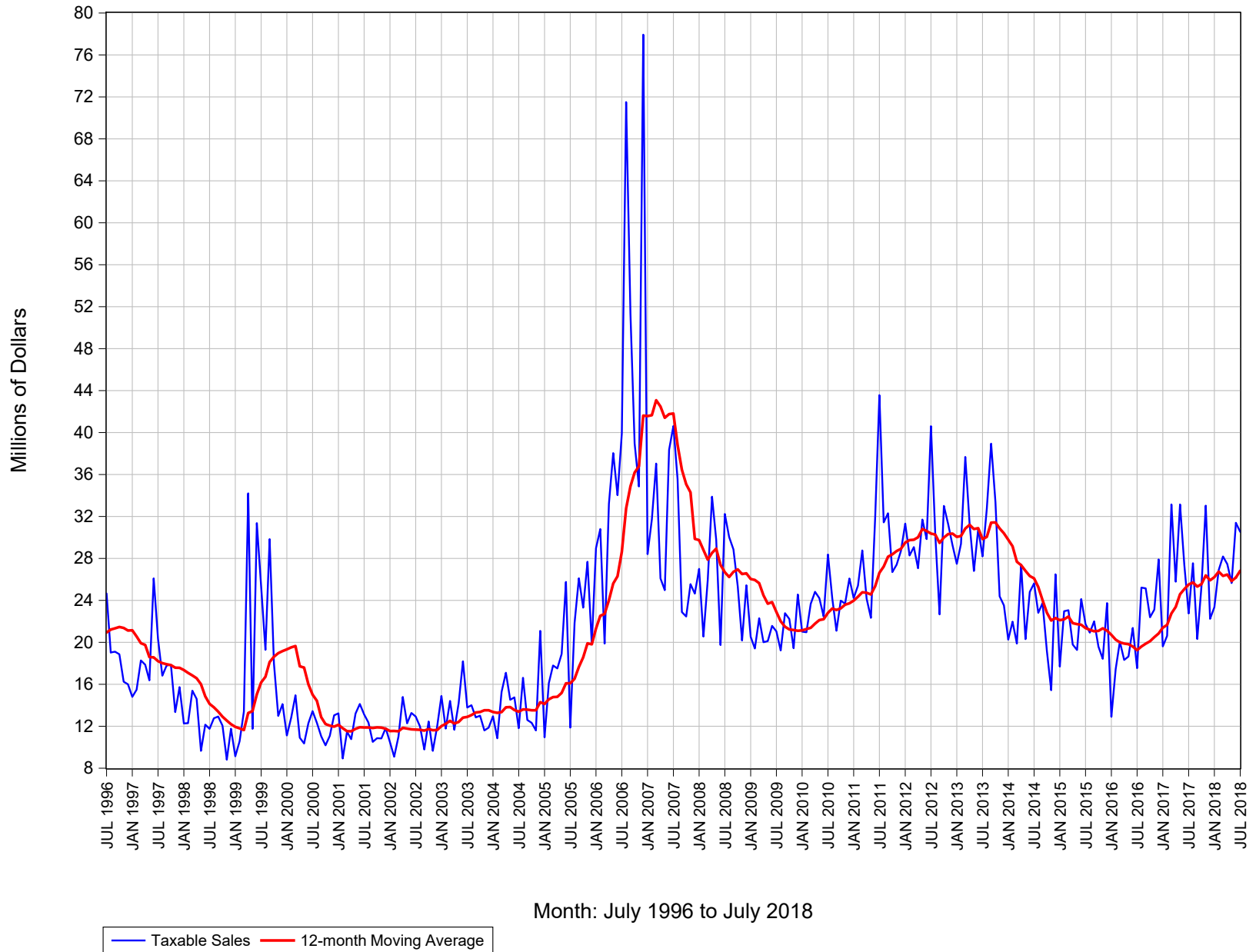
Month: July 1996 to July 2018

— Taxable Sales — 12-month Moving Average

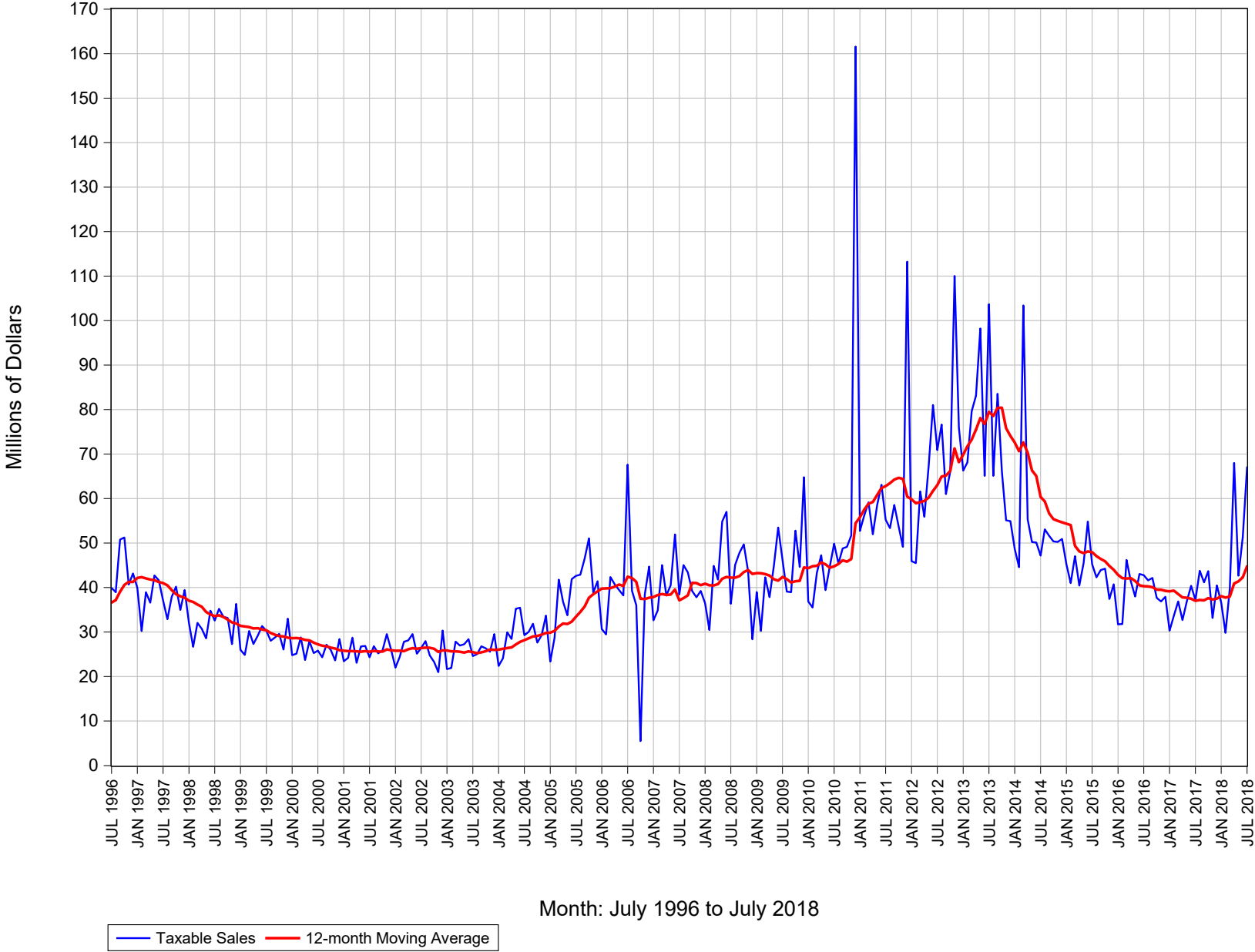
Esmeralda County Taxable Sales: Monthly



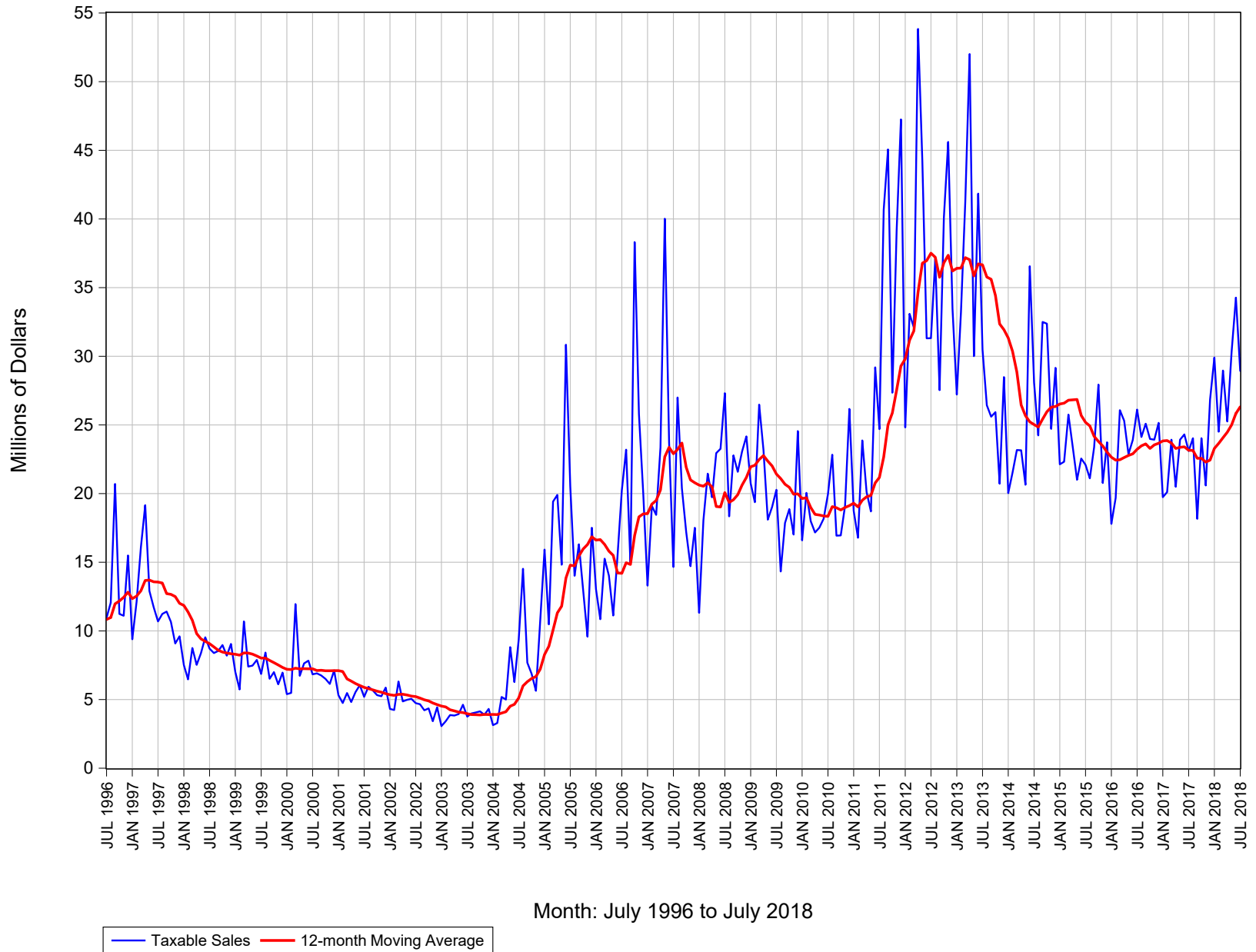
Eureka County Taxable Sales: Monthly



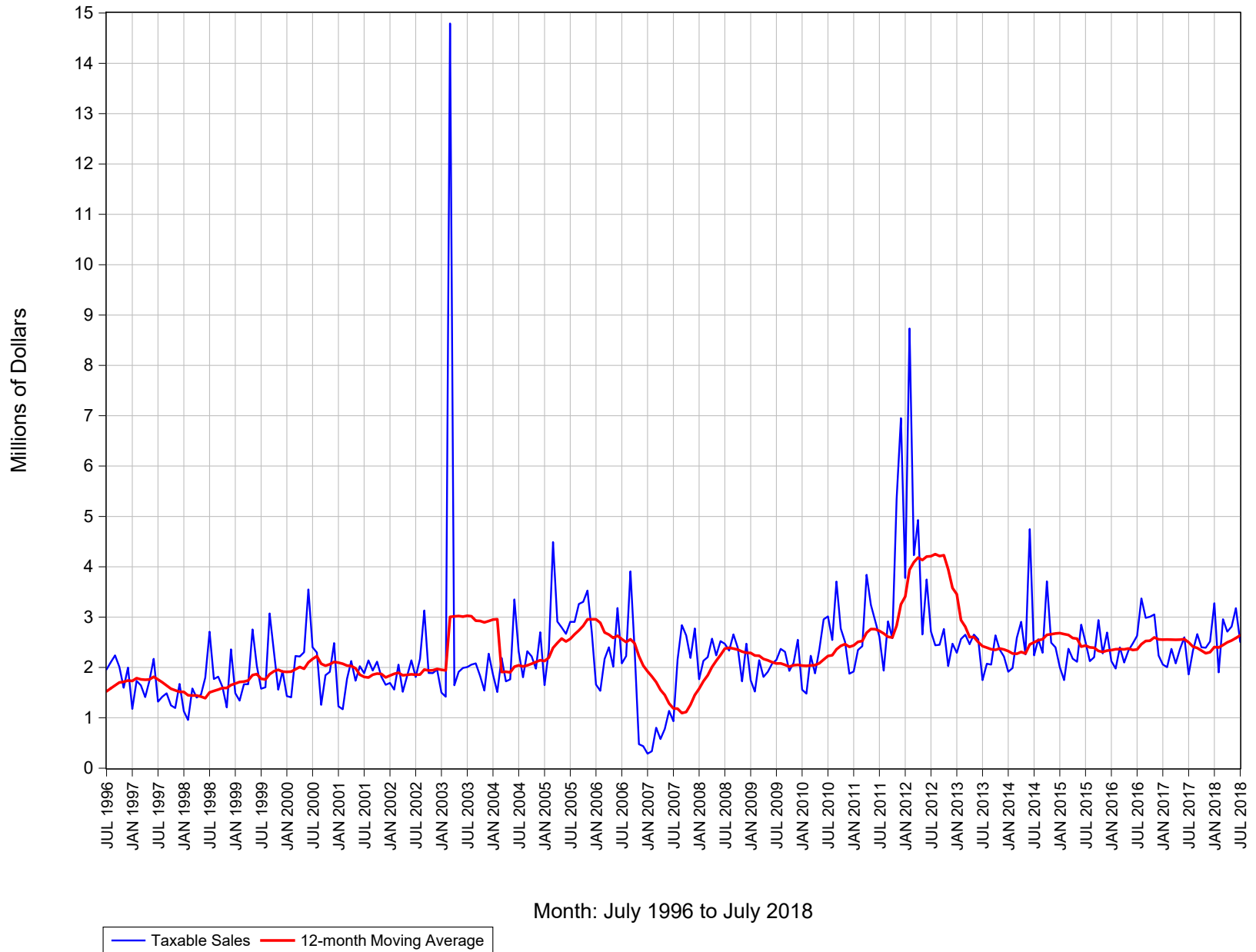
Humboldt County Taxable Sales: Monthly



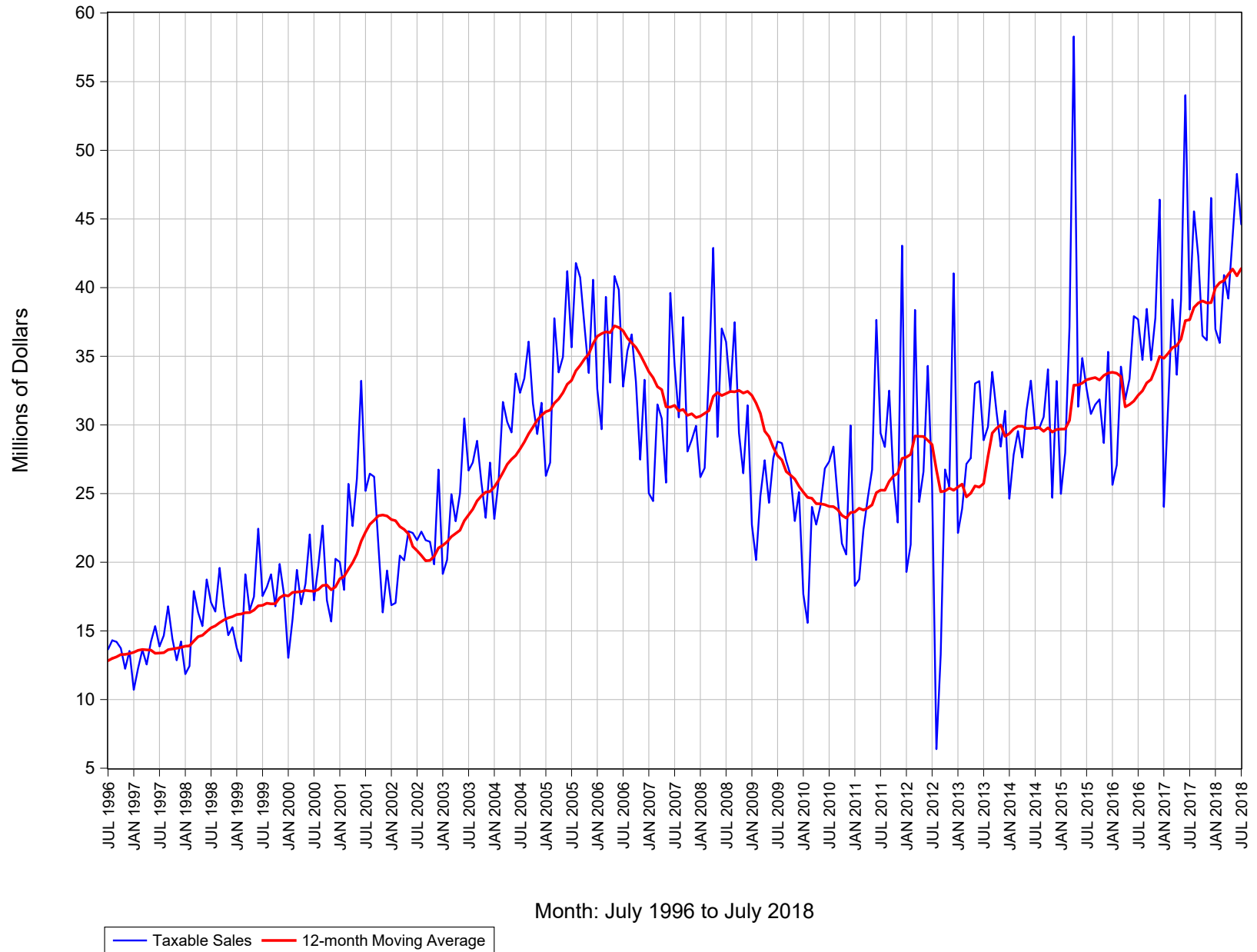
Lander County Taxable Sales: Monthly



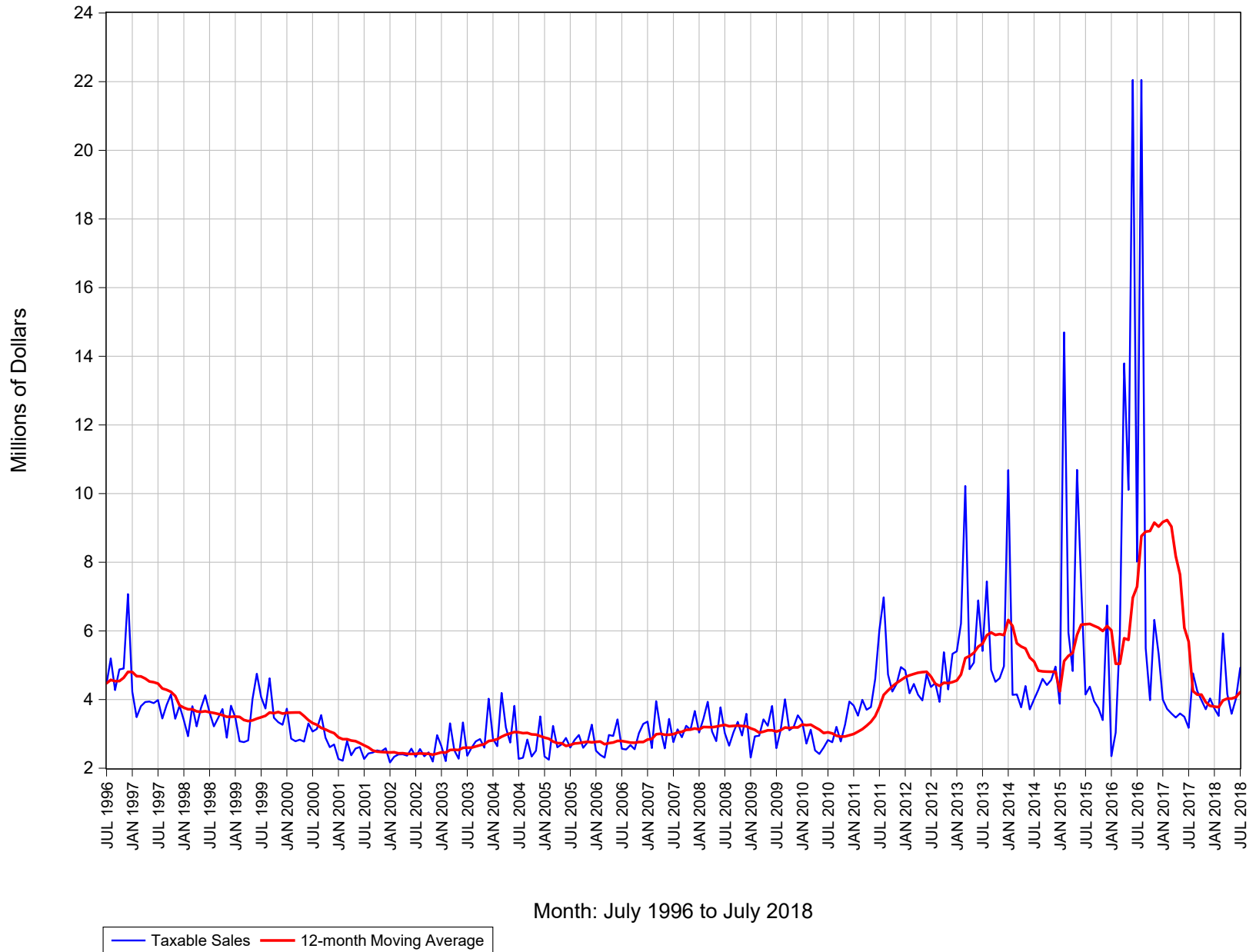
Lincoln County Taxable Sales: Monthly



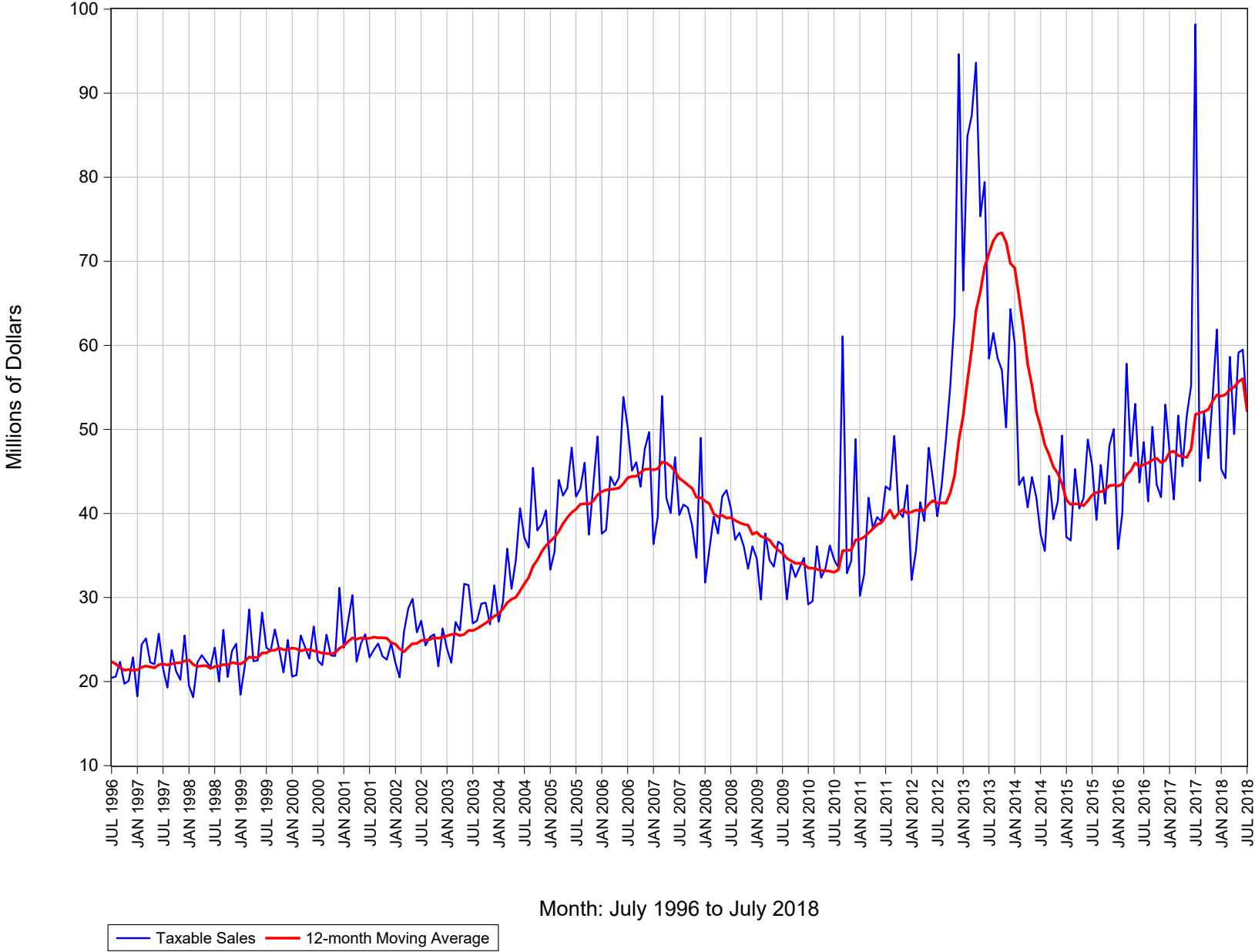
Lyon County Taxable Sales: Monthly



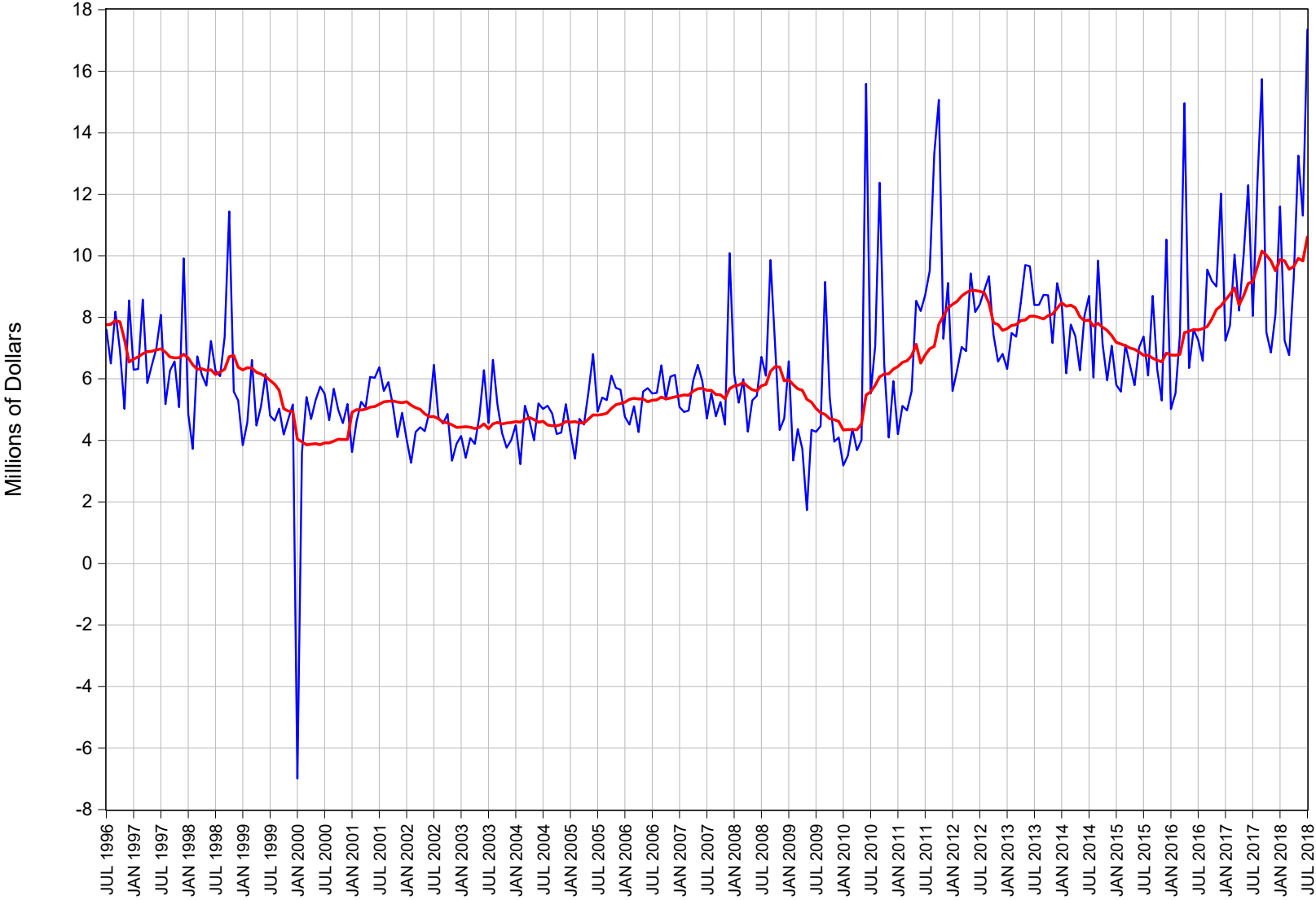
Mineral County Taxable Sales: Monthly



Nye County Taxable Sales: Monthly



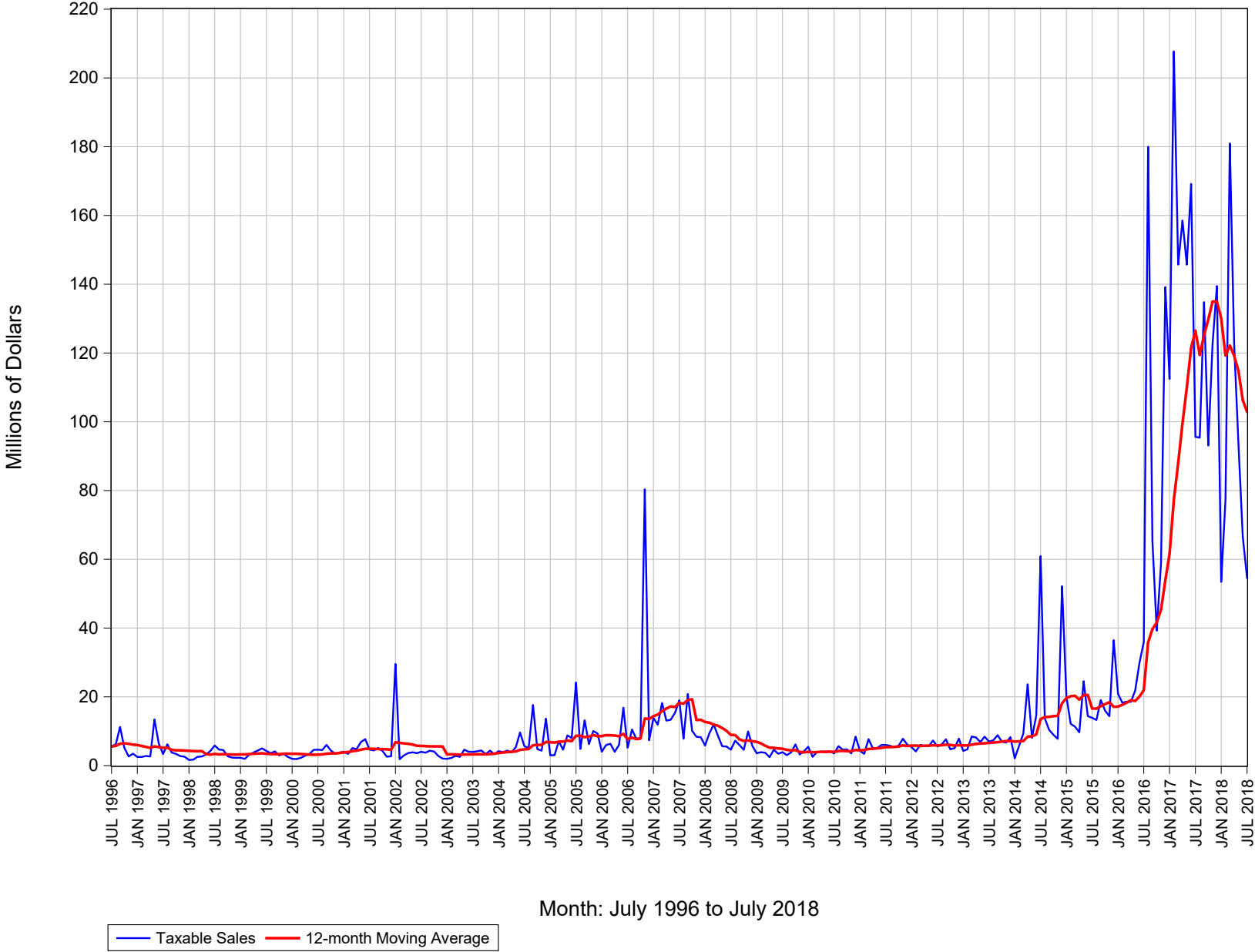
Pershing County Taxable Sales: Monthly



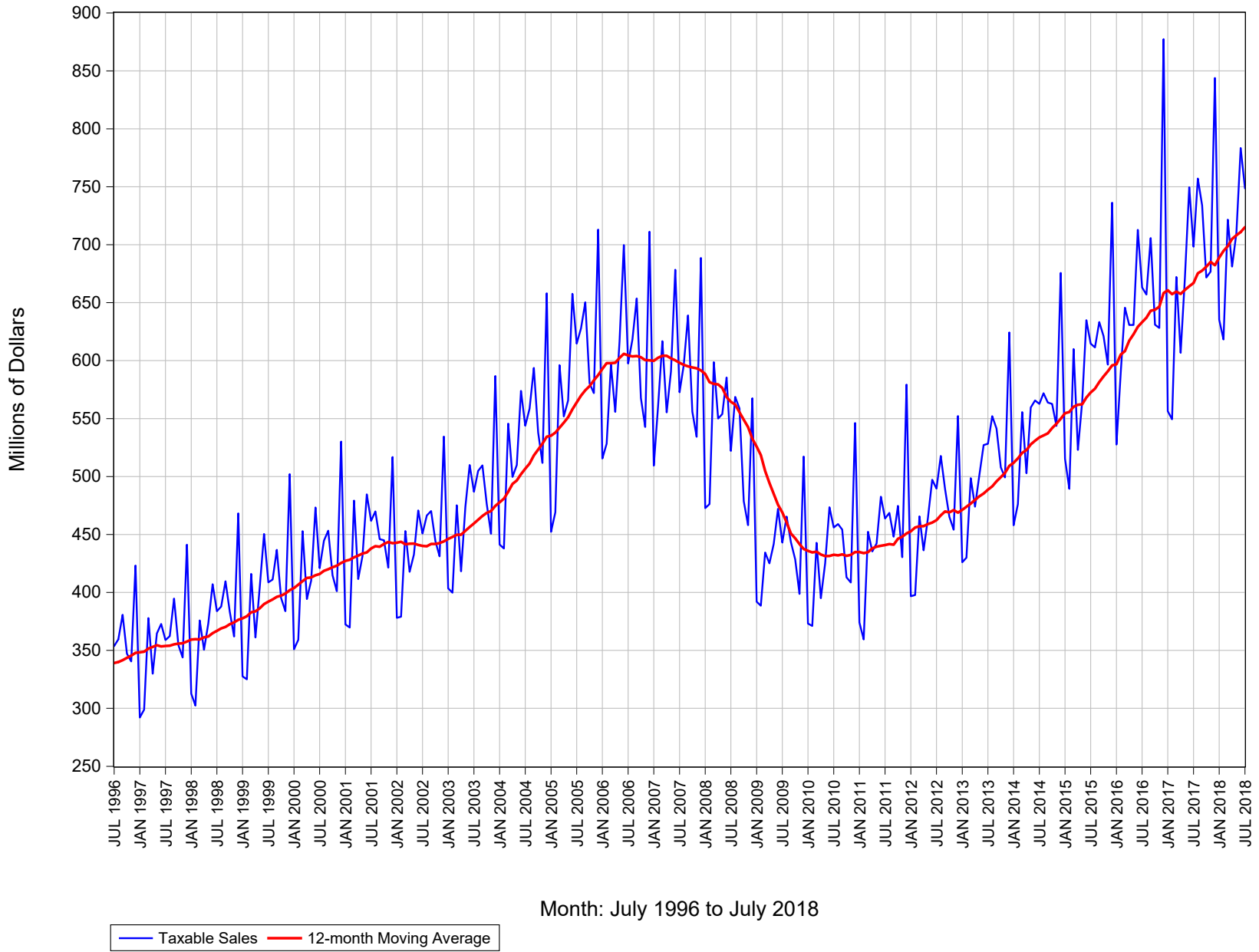
Month: July 1996 to July 2018

— Taxable Sales — 12-month Moving Average

Storey County Taxable Sales: Monthly



Washoe County Taxable Sales: Monthly



White Pine County Taxable Sales: Monthly

