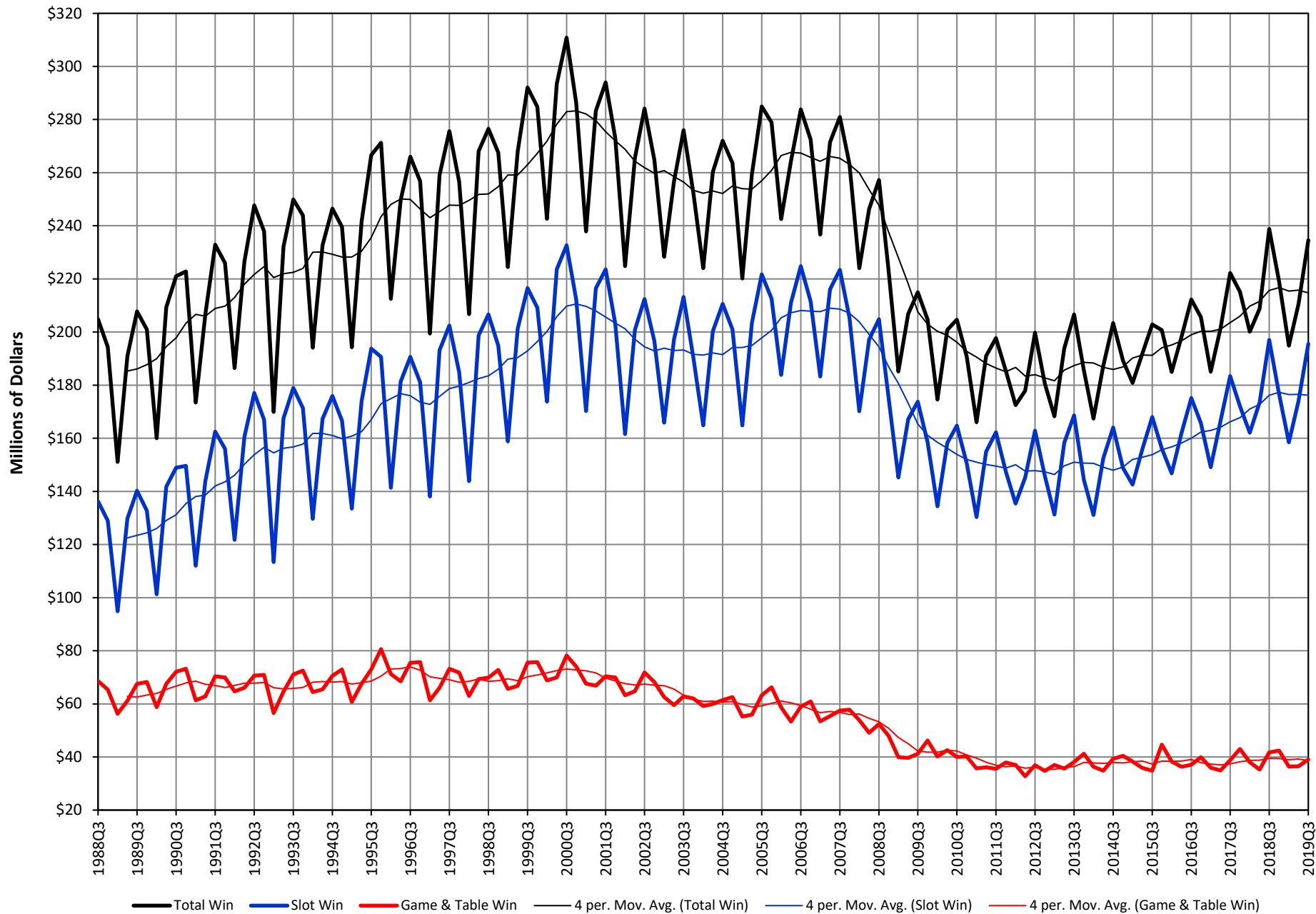
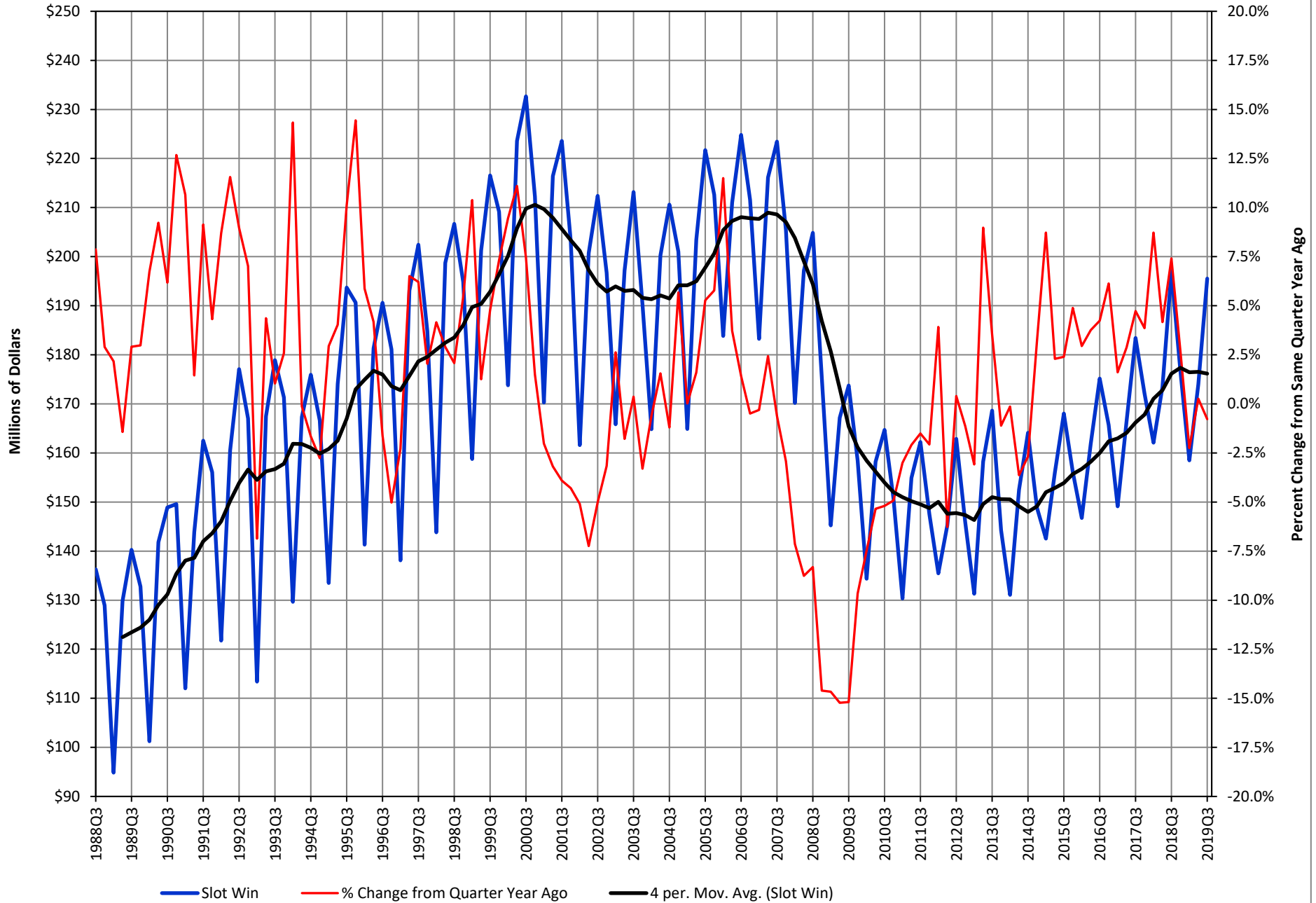


**CHART 1 - Washoe County**  
**Total Gaming Win, Slot Win and Game & Table Win**  
 Quarterly Fiscal Year Business Activity Period: 1988Q3 - 2019Q3



## CHART 2 - Washoe County Total Slot Win

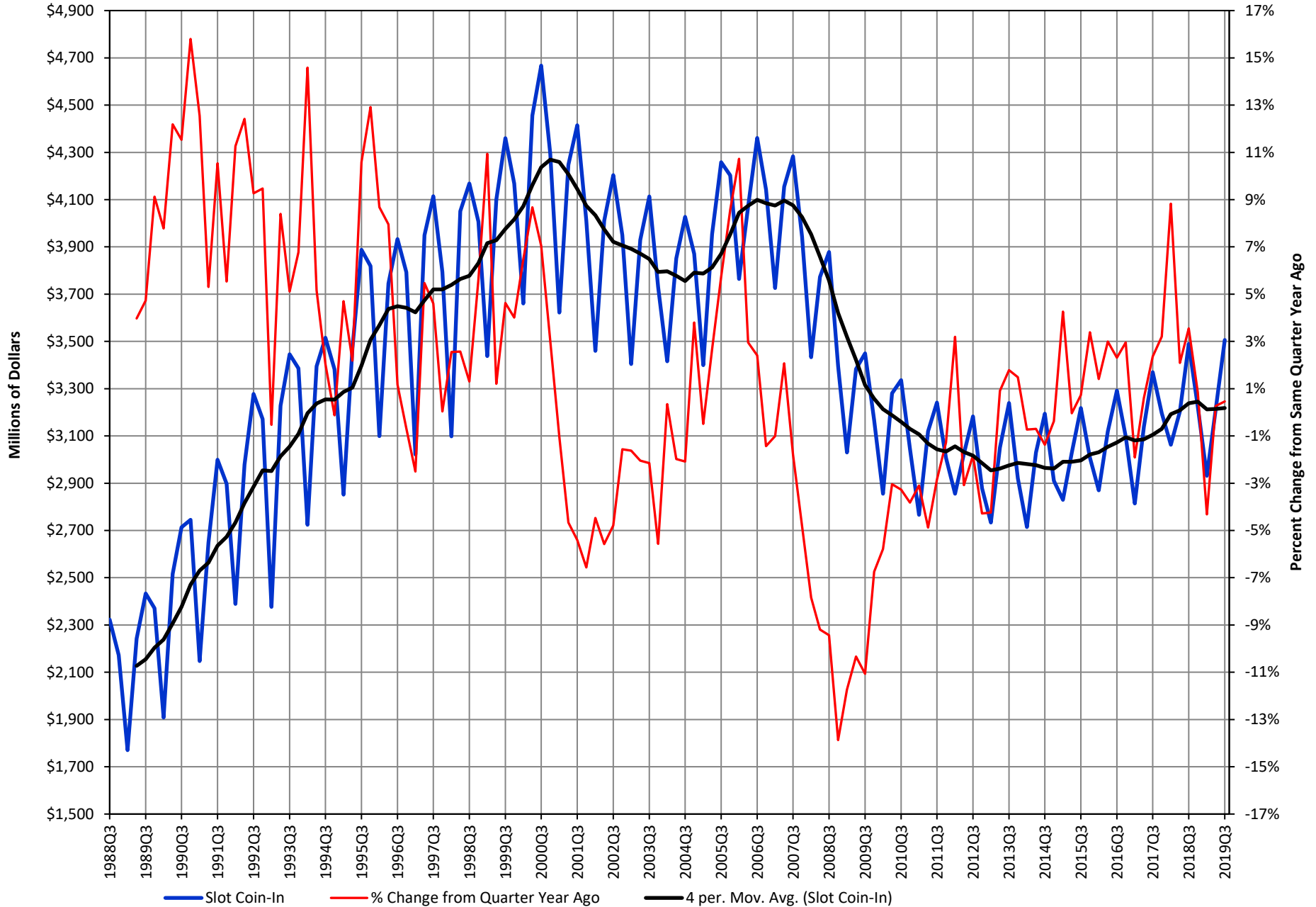
Quarterly Fiscal Year Business Activity Period: 1988Q3 - 2019Q3



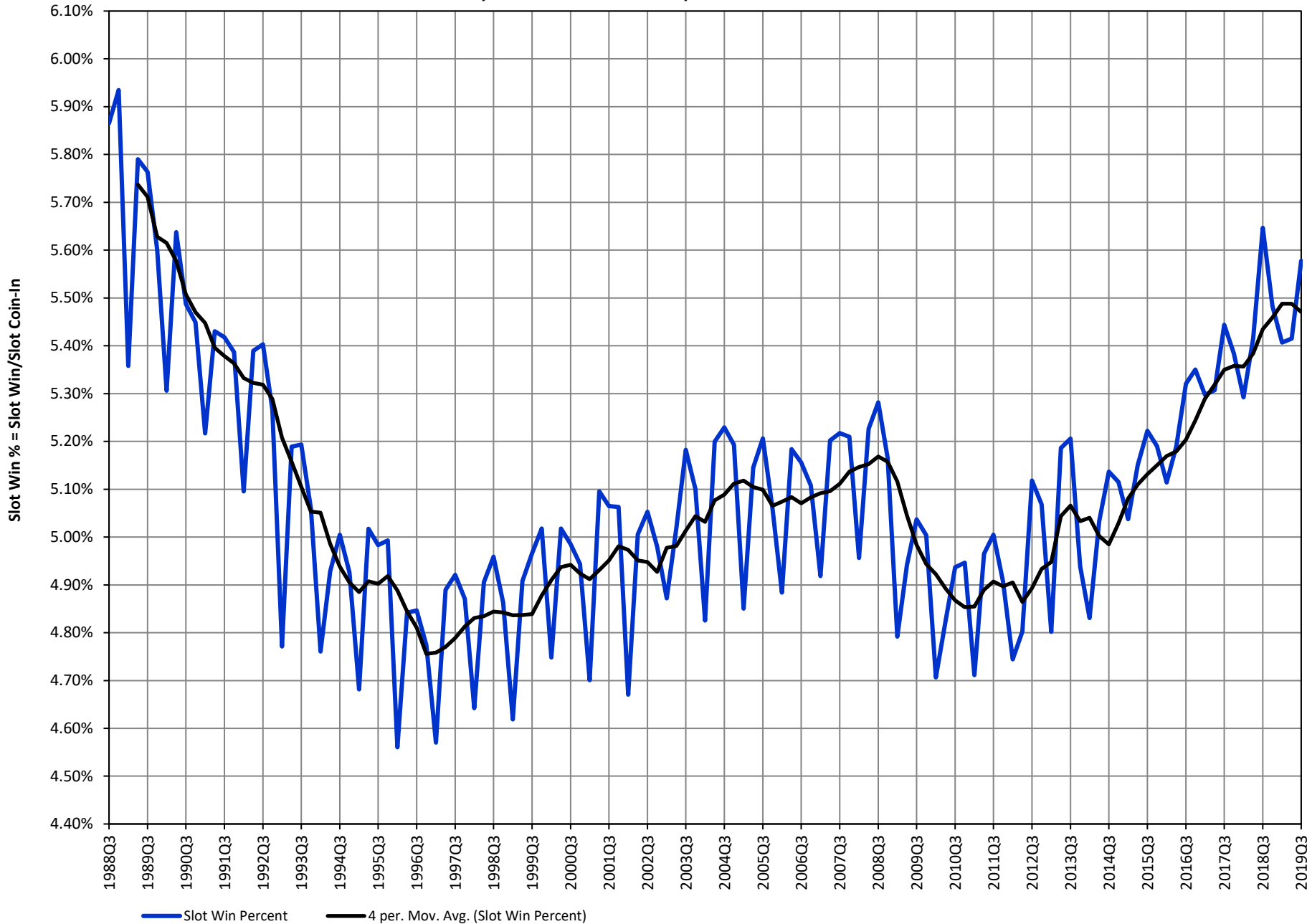
### CHART 3 - Washoe County

#### Total Slot Coin-In

Quarterly Fiscal Year Business Activity Period: 1988Q3 - 2019Q3

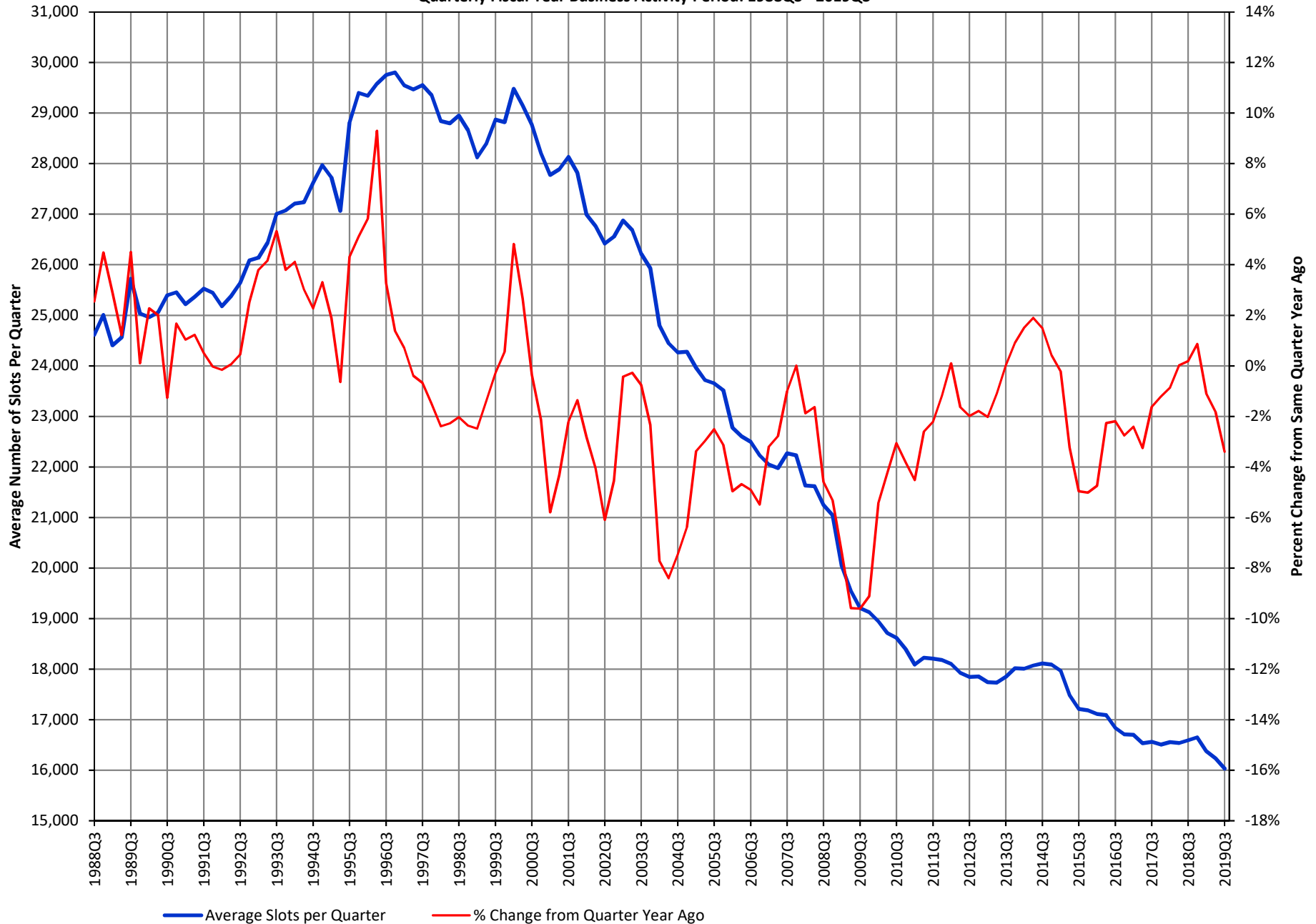


**CHART 4 - Washoe County**  
**Slot Win Percent**  
 Quarterly Fiscal Year Business Activity Period: 1988Q3 - 2019Q3

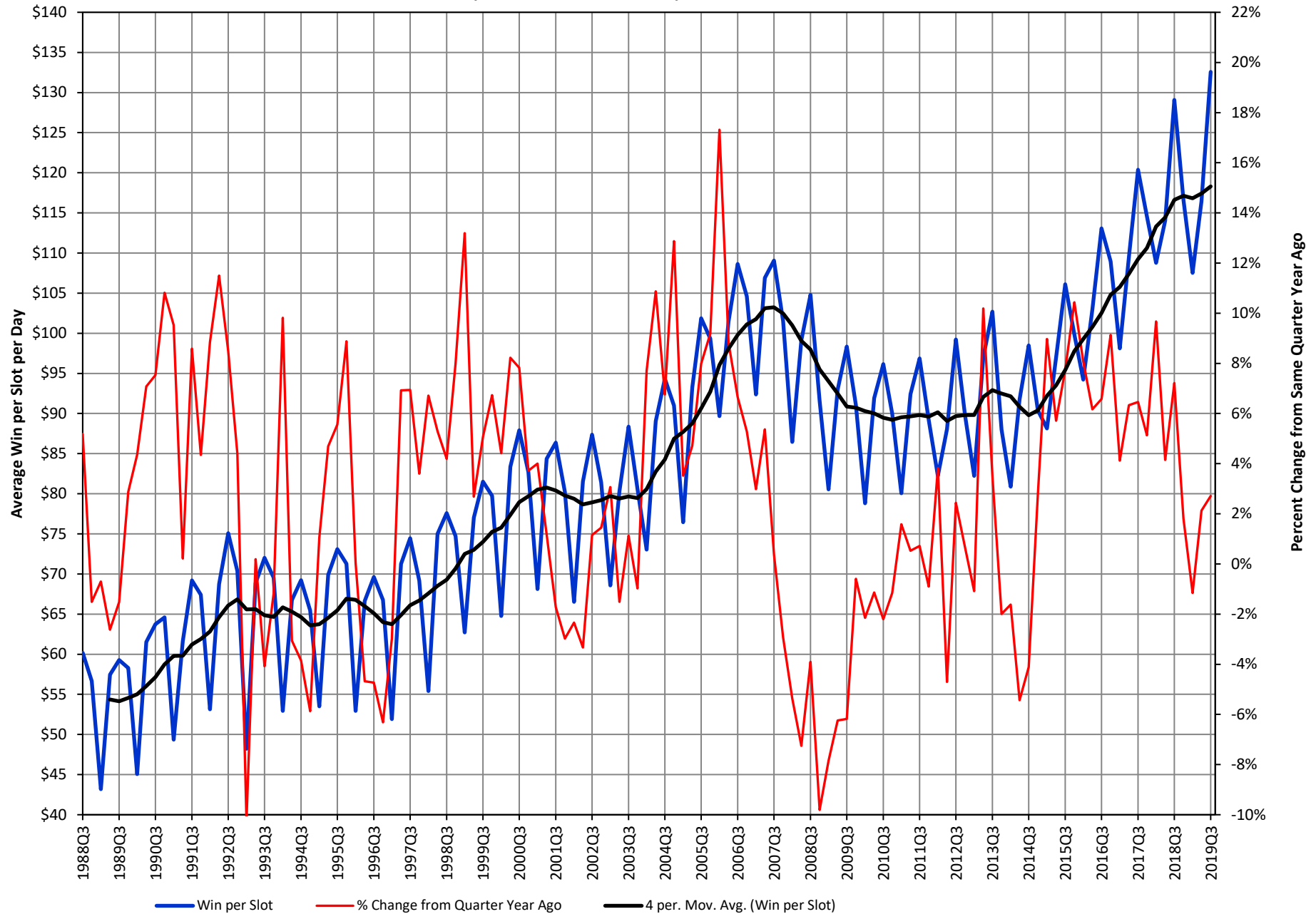


### CHART 5 - Washoe County Total Slot Count

Quarterly Fiscal Year Business Activity Period: 1988Q3 - 2019Q3

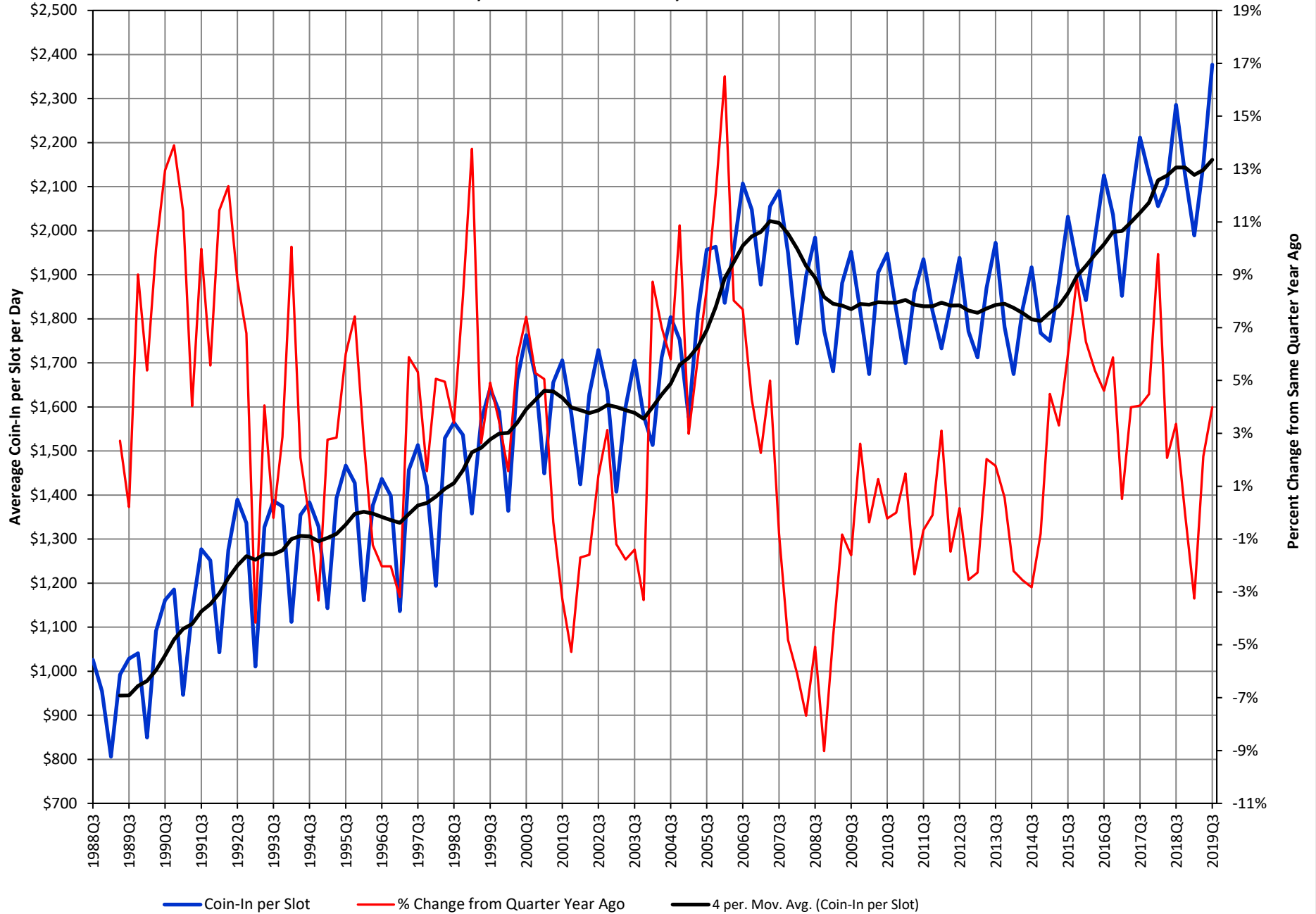


**CHART 6 - Washoe County**  
**Win per Slot per Day**  
 Quarterly Fiscal Year Business Activity Period: 1988Q3 - 2019Q3



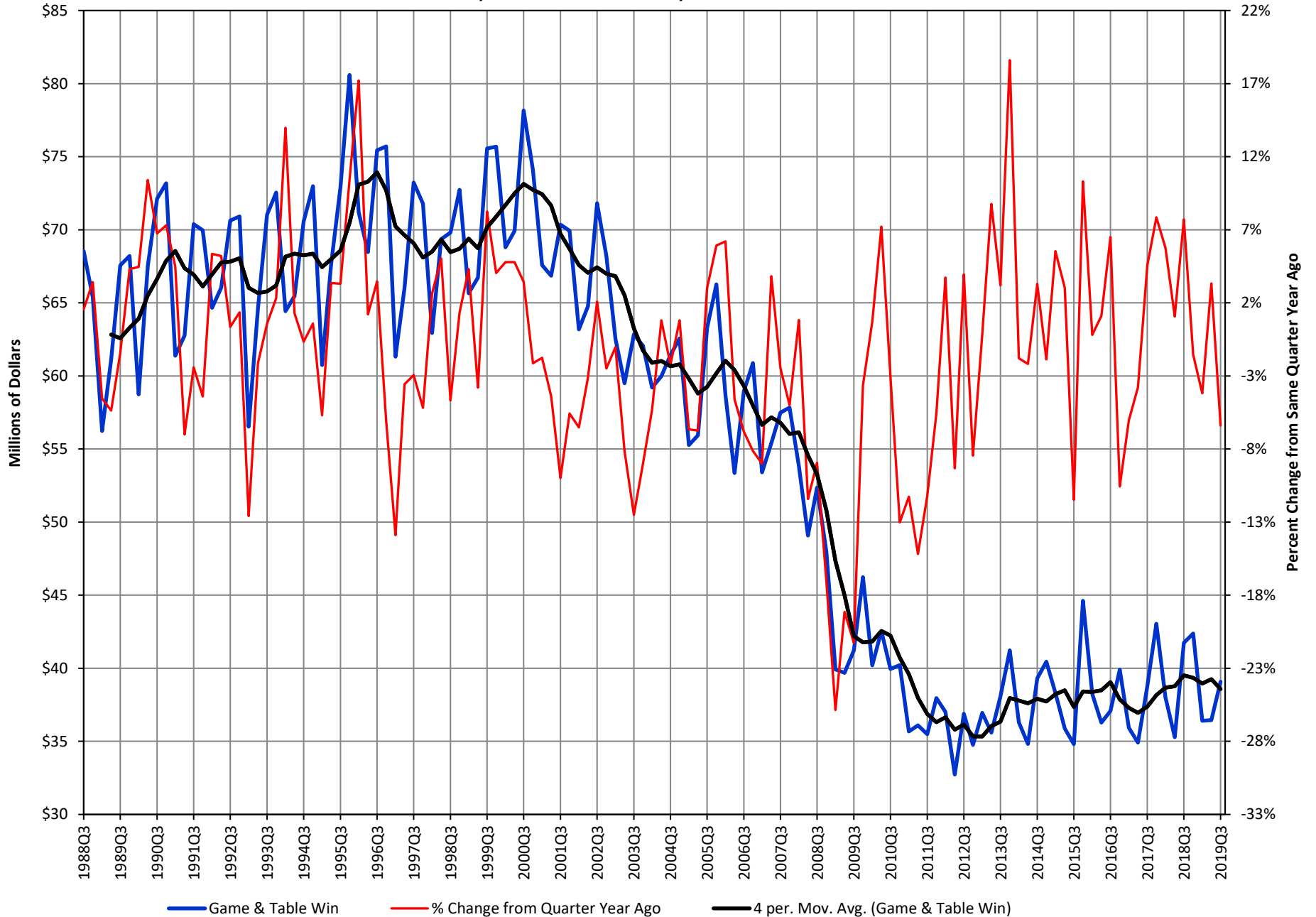
### CHART 7 - Washoe County Coin-In per Slot per Day

Quarterly Fiscal Year Business Activity Period: 1988Q3 - 2019Q3



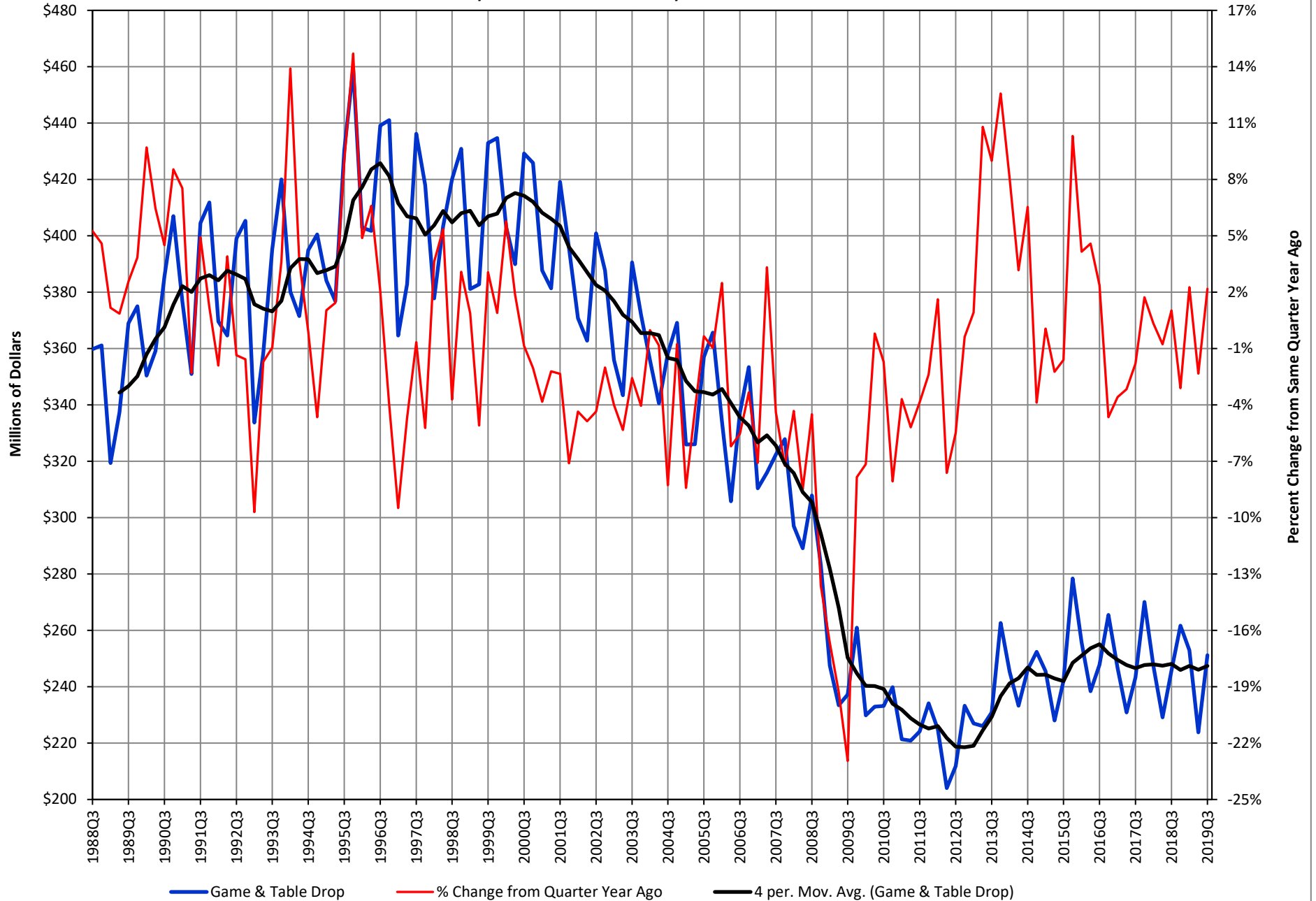
### CHART 8 - Washoe County Total Game & Table Win

Quarterly Fiscal Year Business Activity Period: 1988Q3 - 2019Q3

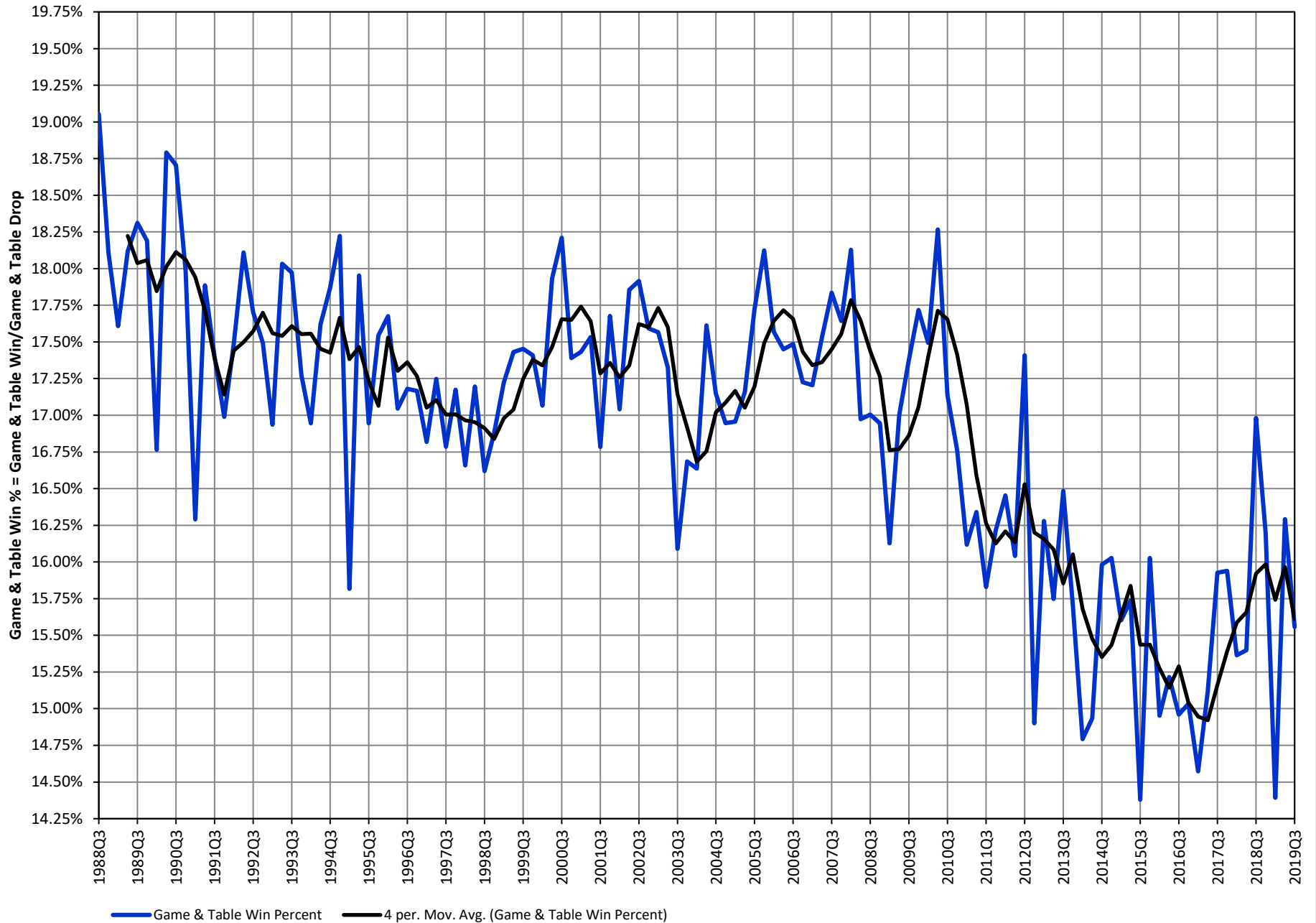


### CHART 9 - Washoe County Total Game & Table Drop

Quarterly Fiscal Year Business Activity Period: 1988Q3 - 2019Q3

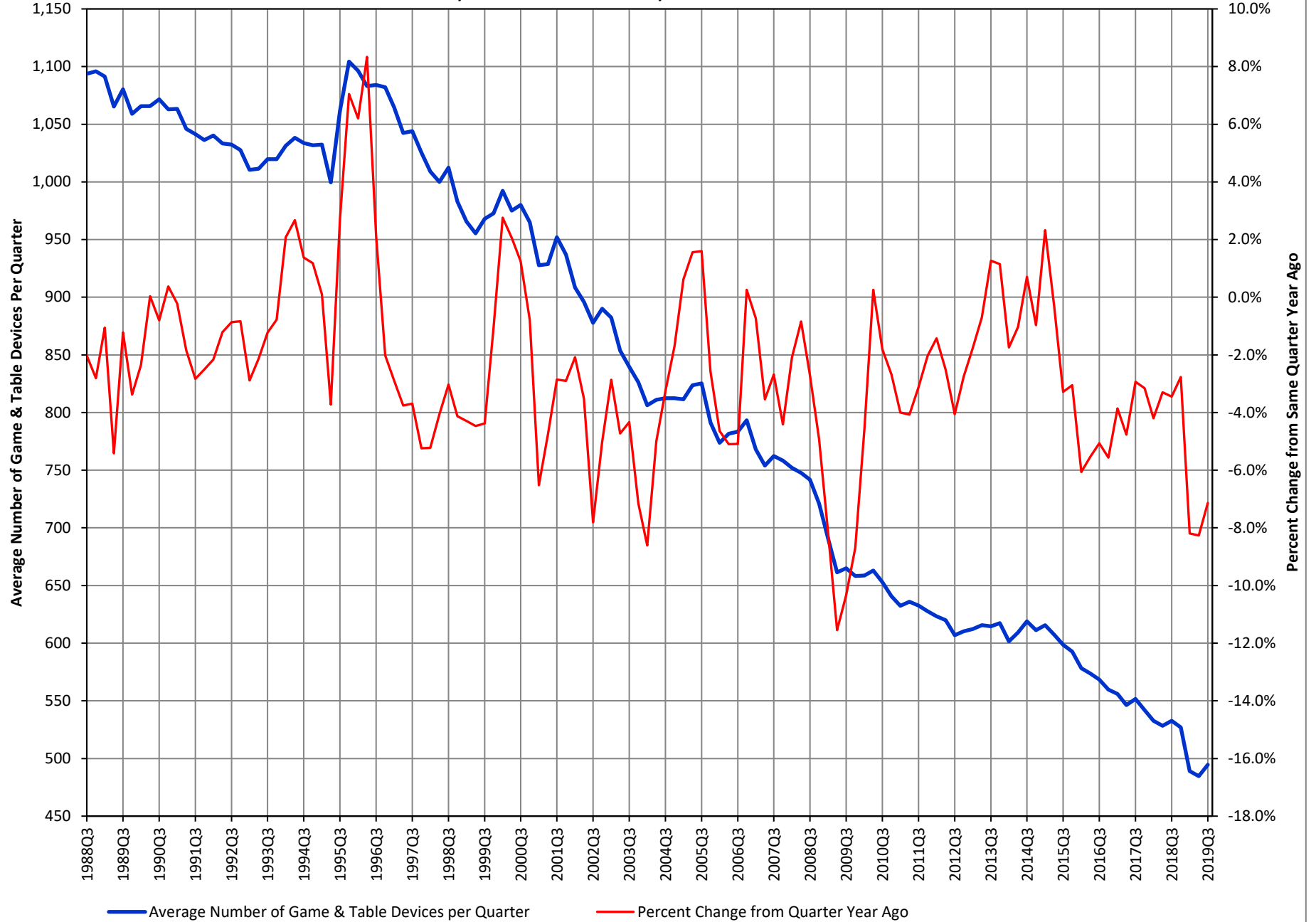


**CHART 10 - Washoe County  
Game & Table Win Percent**  
Quarterly Fiscal Year Business Activity Period: 1988Q3 - 2019Q3

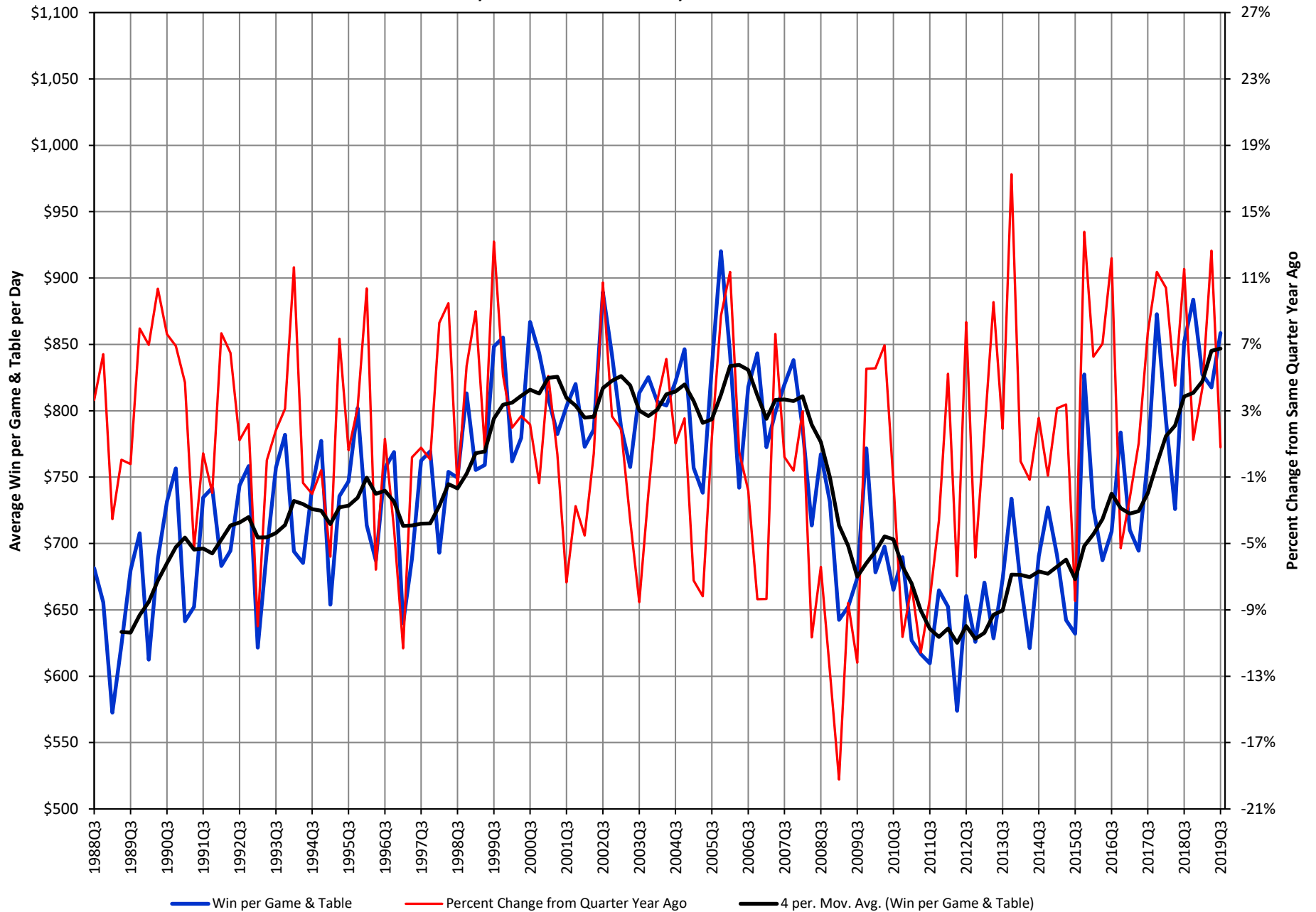


### CHART 11 - Washoe County Total Game & Table Count

Quarterly Fiscal Year Business Activity Period: 1988Q3 - 2019Q3



**CHART 12 - Washoe County**  
**Win per Game & Table per Day**  
 Quarterly Fiscal Year Business Activity Period: 1988Q3 - 2019Q3



**CHART 13 - Washoe County**  
**Drop per Game & Table per Day**  
 Quarterly Fiscal Year Business Activity Period: 1988Q3 - 2019Q3

