



Bureau of Land Management Ely District

Shane DeForest
Acting District Manager

Legislative Committee on Public Lands

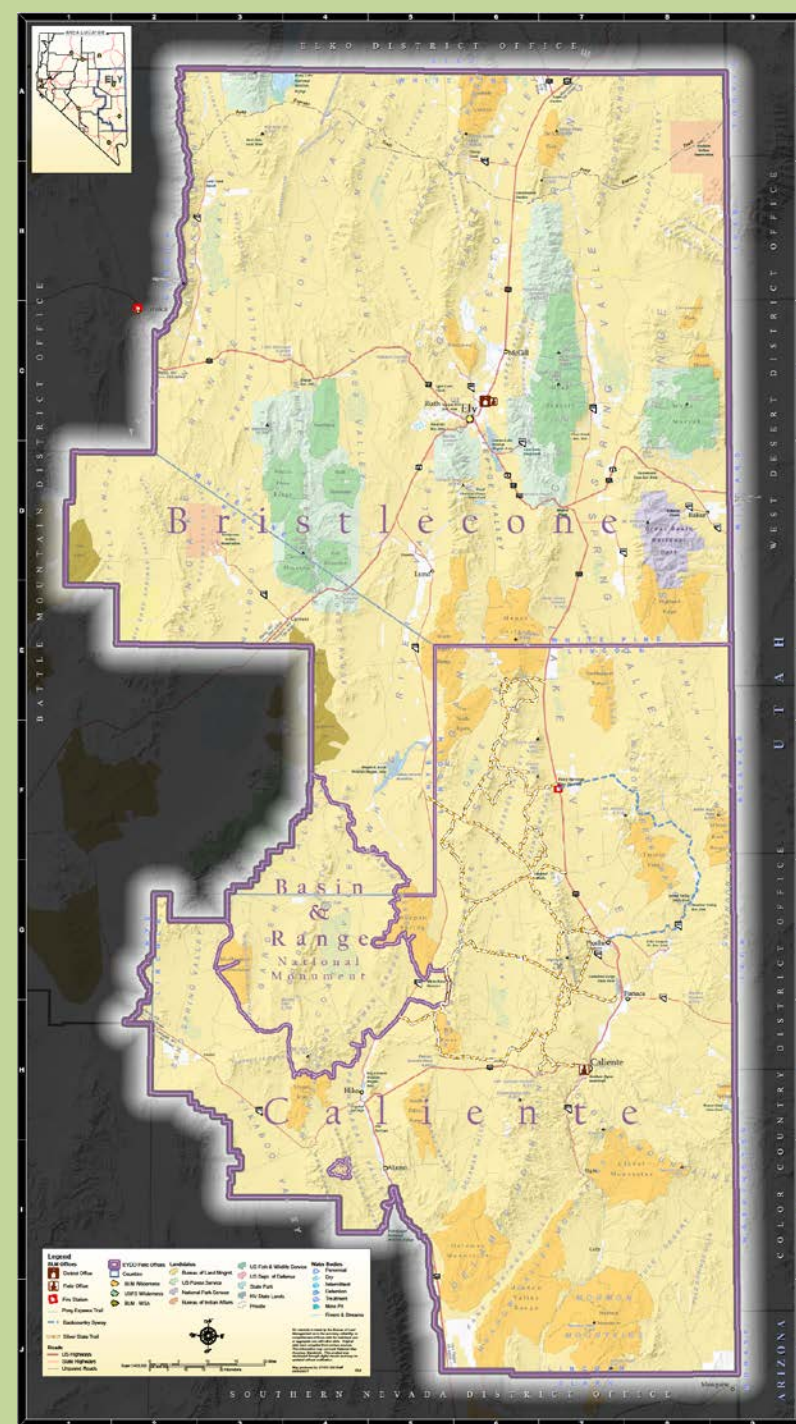
March 3, 2020

**Ely District
12 million acres**

**Bristlecone Field
Office**

Caliente Field Office

**Basin and Range
National Monument**





Major Program Areas

**RECREATION AND VISITOR
SERVICES AND WILDERNESS
MANAGEMENT**

**GRAZING AND RANGELAND
HEALTH**

**WILD HORSE AND BURRO
MANAGEMENT**

**WILDLIFE AND SPECIAL
STATUS SPECIES**

**LANDS, REALTY, MINING,
OIL & GAS**

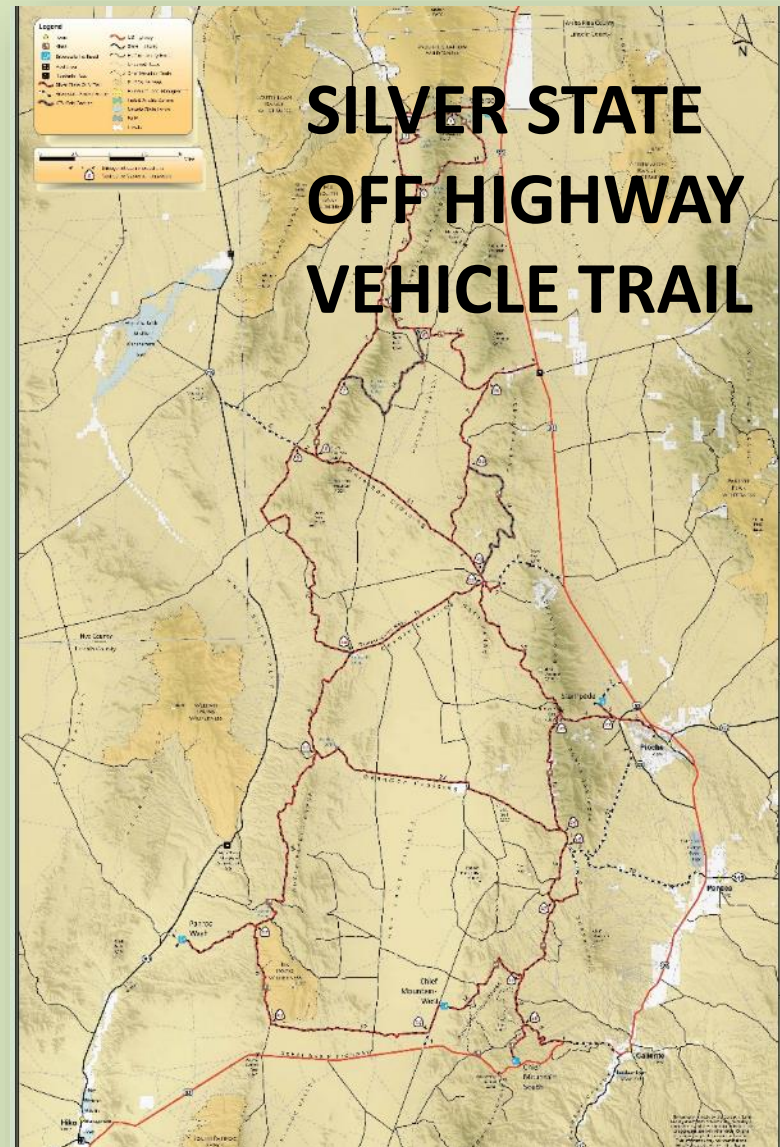
**SPECIAL LEGISLATION
(DINGELL ACT; SNPLMA
LCCRDA; WPCRDA, LCLA)**

**FUELS REDUCTION AND
HABITAT RESTORATION**

**ARCHAEOLOGY AND
PARTNERSHIPS**

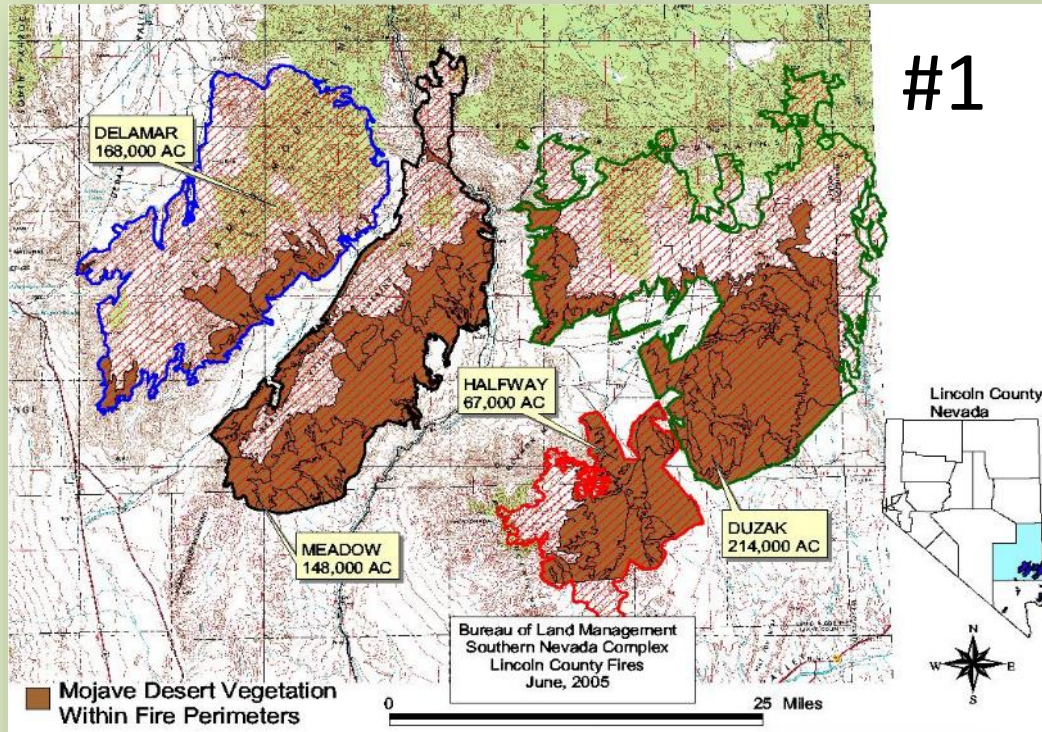


Recreation





Grazing, Range, Weeds, Fire





Wild Horses and Burros

Ely Resource Management Plan

“Maintain and manage healthy, self-sustaining wild horse herds inside herd management areas within appropriate management levels to ensure a thriving natural ecological balance while preserving a multiple use relationship with other uses and resources”





Wildlife Management

**SAGE GROUSE
CONSERVATION**



ELECTROFISHING



**BIG GAME HABITAT
MGMT**



**THREATENED AND
ENDANGERED SPECIES**



SENSITIVE SPECIES





Lands, Realty, Mining

LANDS AND REALTY

The Ely District processes an average of 146 realty actions per year and receives an average of 81 new requests per year.

MINING

Bald Mountain -Gold Mine
Robinson Mine - Copper
and other minerals

PAN GOLD MINE





Special Legislation

SNPLMA (1998)

**Mountain Bike
Trails**

Fuels Reduction

**Habitat
Restoration**

**LCCRDA (2004)
WPCRDA (2006)**

**Public land
sales, Silver
State Trail and
various other
actions in
Lincoln and
White Pine
Counties**

Dingell Act (2019)

**400 ac. Land
conveyance to
Lincoln County
for landfill
Corrective Patent
for Coyote
Springs
Investment LLC**



Fuels Reduction, Habitat

BEFORE TREATMENT



AFTER TREATMENT



**SNPLMA ROUND 15 ATLANTA ROAD SAGE GROUSE
HABITAT IMPROVEMENT PROJECT
TO EXPAND AND IMPROVE SAGE GROUSE HABITAT**



Bureau of Land Management Ely District

QUESTIONS?

Shane DeForest, Acting Ely District Manager

775-289-1800

sdefores@blm.gov