

TABLE 1M
Statewide Total Percentage Fee Collections and
Percentage Fee Collections from Taxable Gaming Revenue
Fiscal Year Tax Collection Basis: July 1993 - July 2010

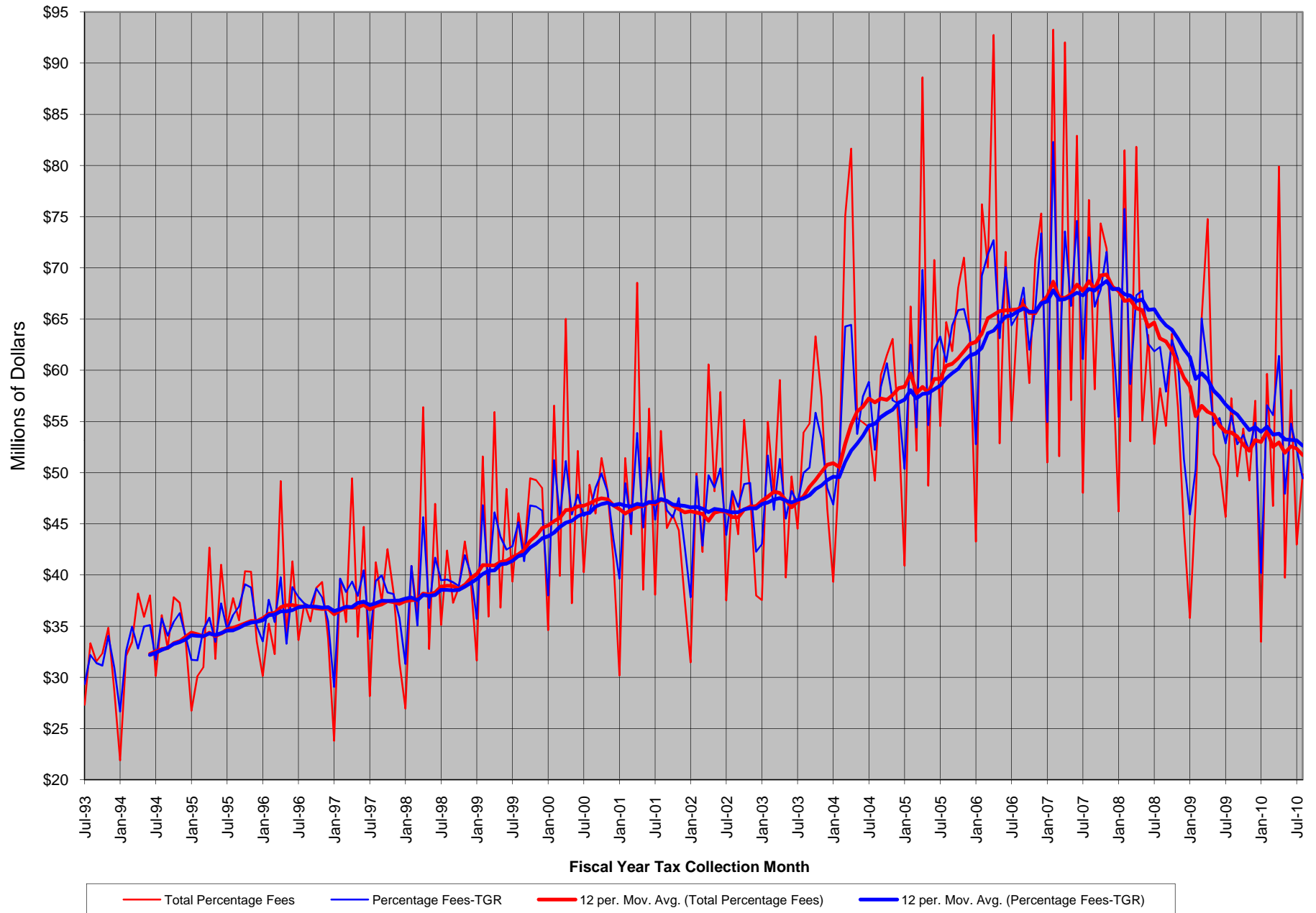


TABLE 2M
Comparison of the Growth in Statewide Total Percentage Fee Collections and Percentage Fee Collections from
Taxable Gaming Revenue - Month versus Same Month Year Ago
Fiscal Year Tax Collection Basis: July 1993 - July 2010

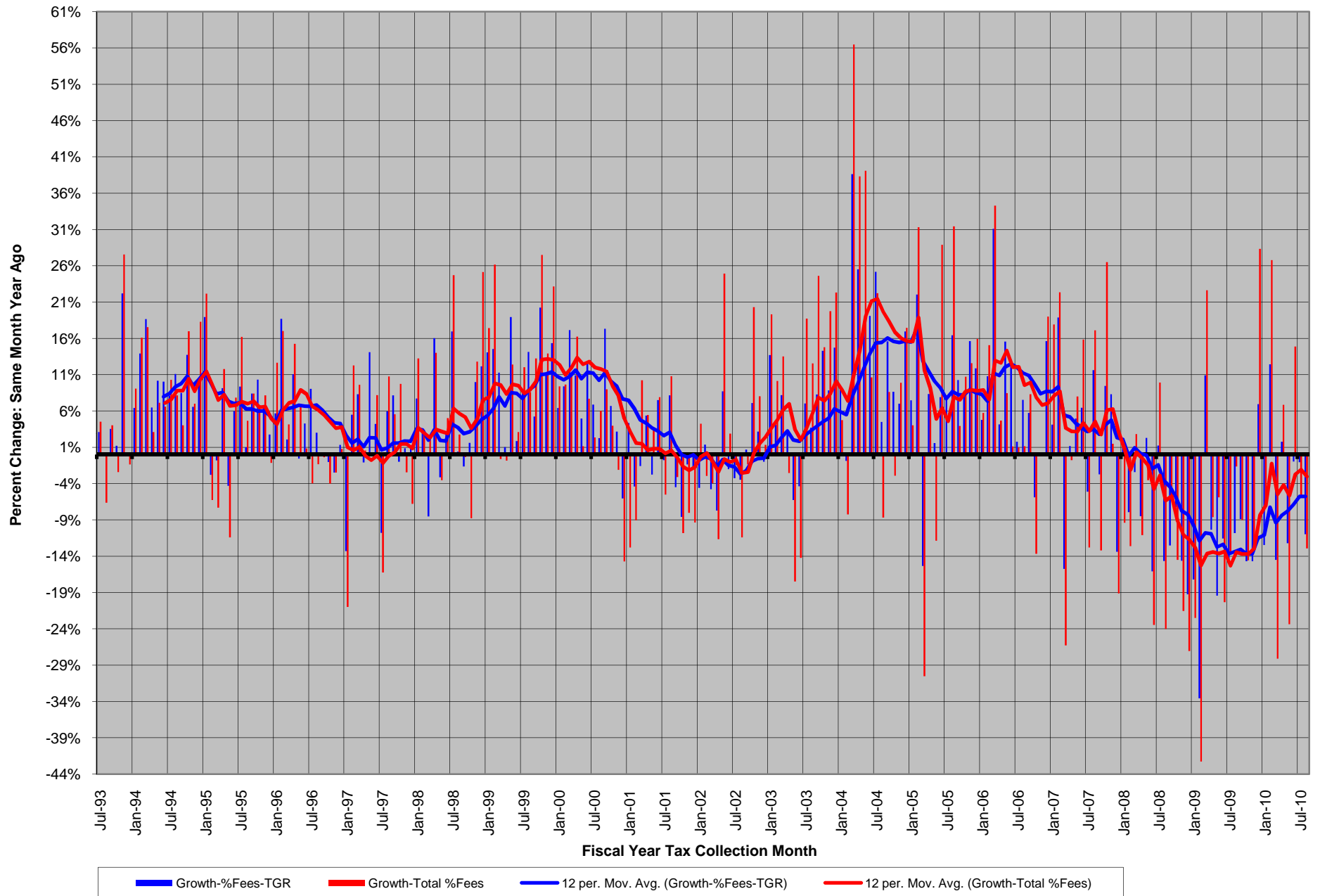


TABLE 3M
Statewide Estimated Fee Adjustment by Month and Cumulative Fiscal Year-to-Date by Fiscal Year
Fiscal Year Tax Collection Basis: July 1993 - July 2010

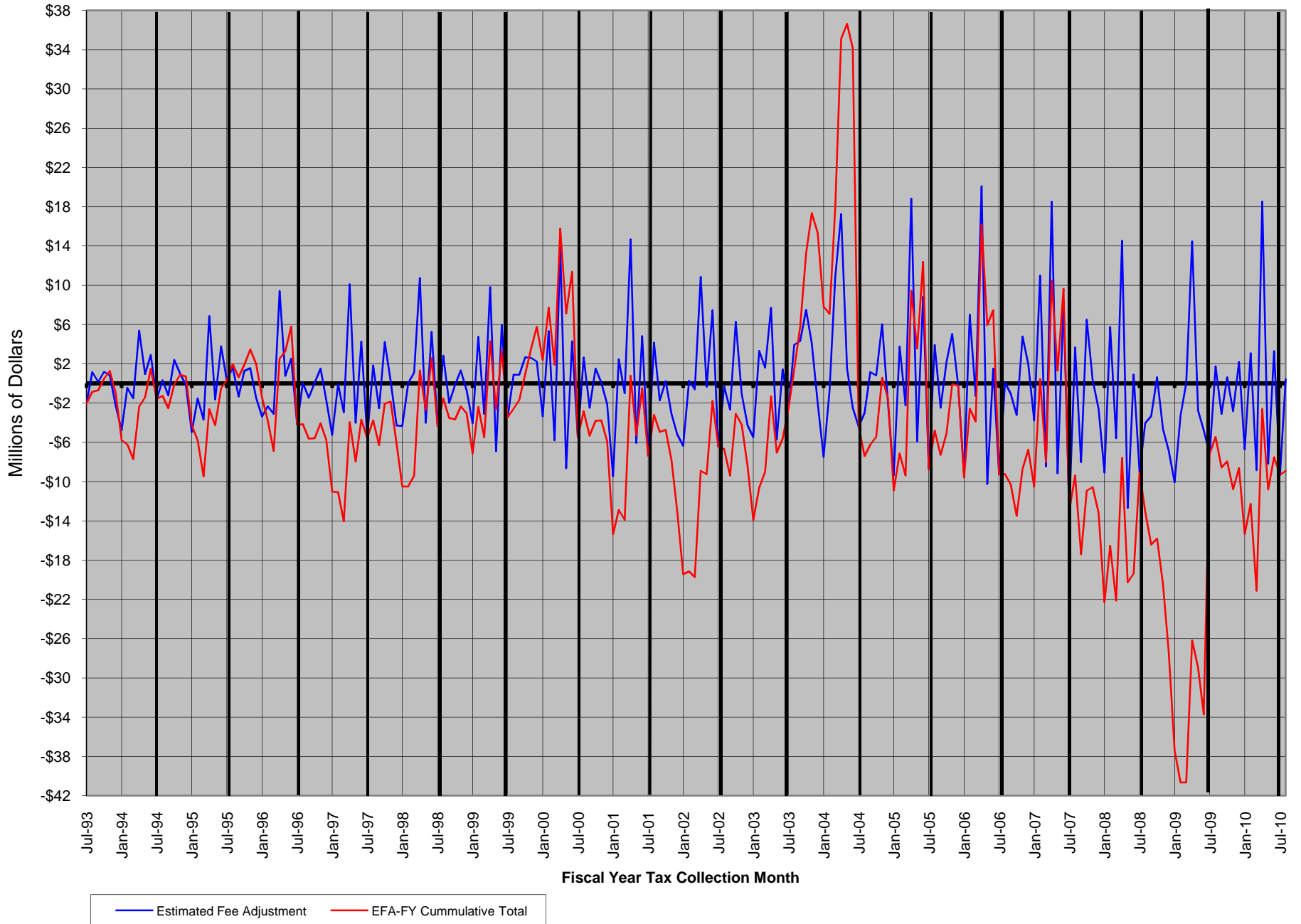


TABLE 4M
Statewide Total Win and Taxable Gaming Revenue
Fiscal Year Tax Collection Basis: July 1993 - July 2010

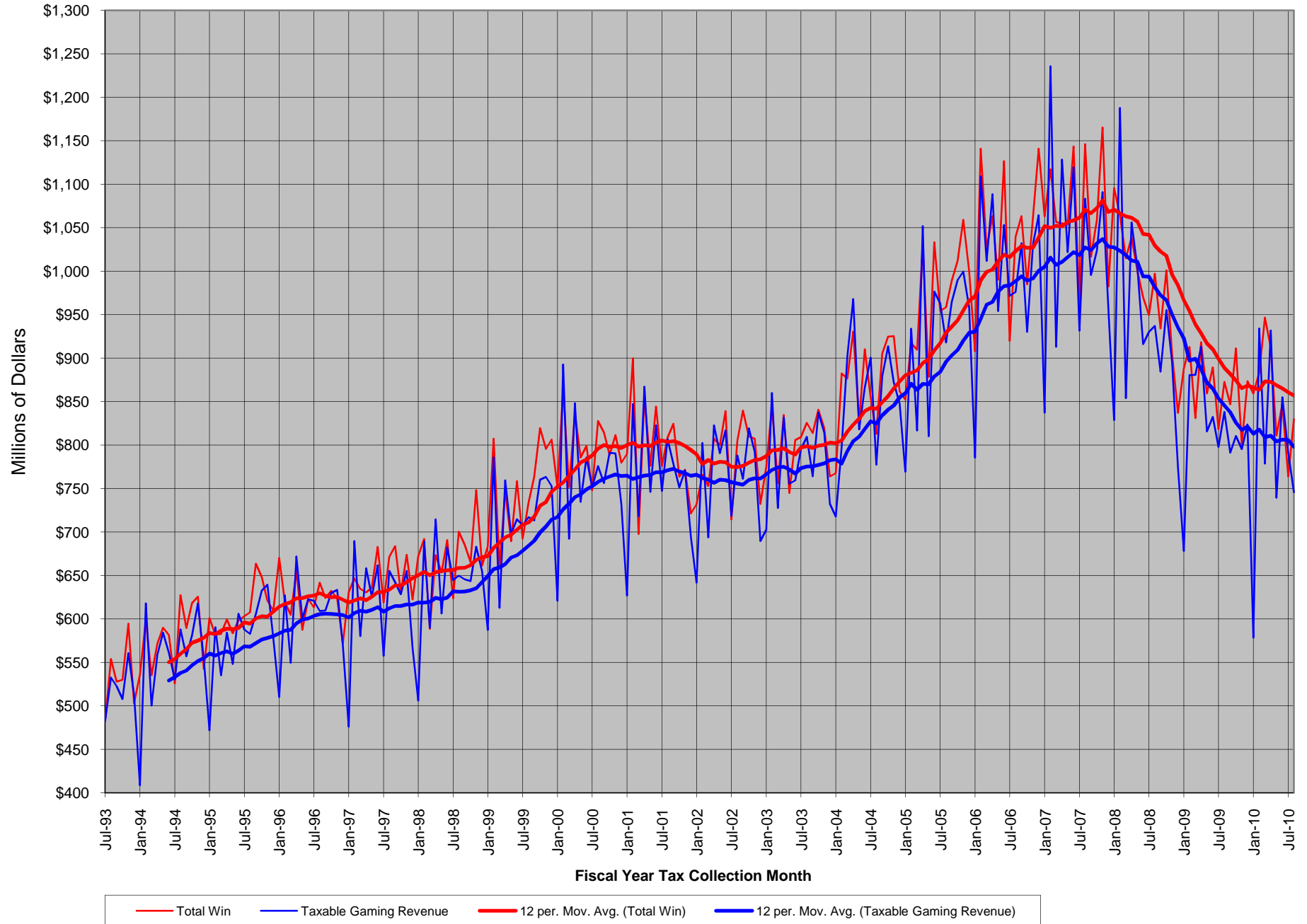


TABLE 5M
Comparison of the Growth in Statewide Total Win and Taxable Gaming Revenue - Month versus Same Month Year Ago
Fiscal Year Tax Collection Basis: July 1993 - July 2010

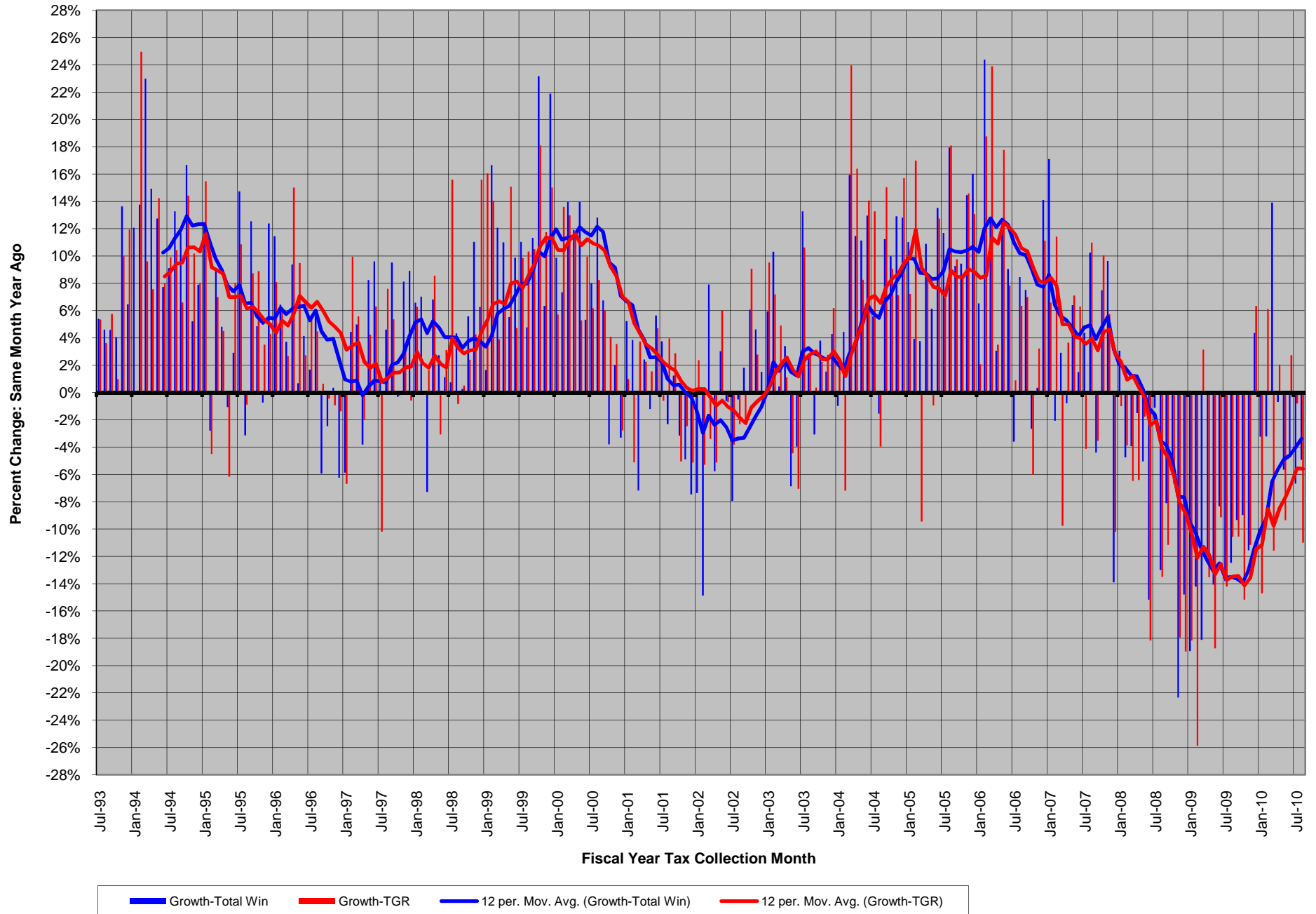


TABLE 6M
Statewide Ratio of Taxable Gaming Revenue to Total Win and Cumulative Fiscal Year-to-Date Ratio by Fiscal Year
Fiscal Year Tax Collection Basis: July 1993 - July 2010

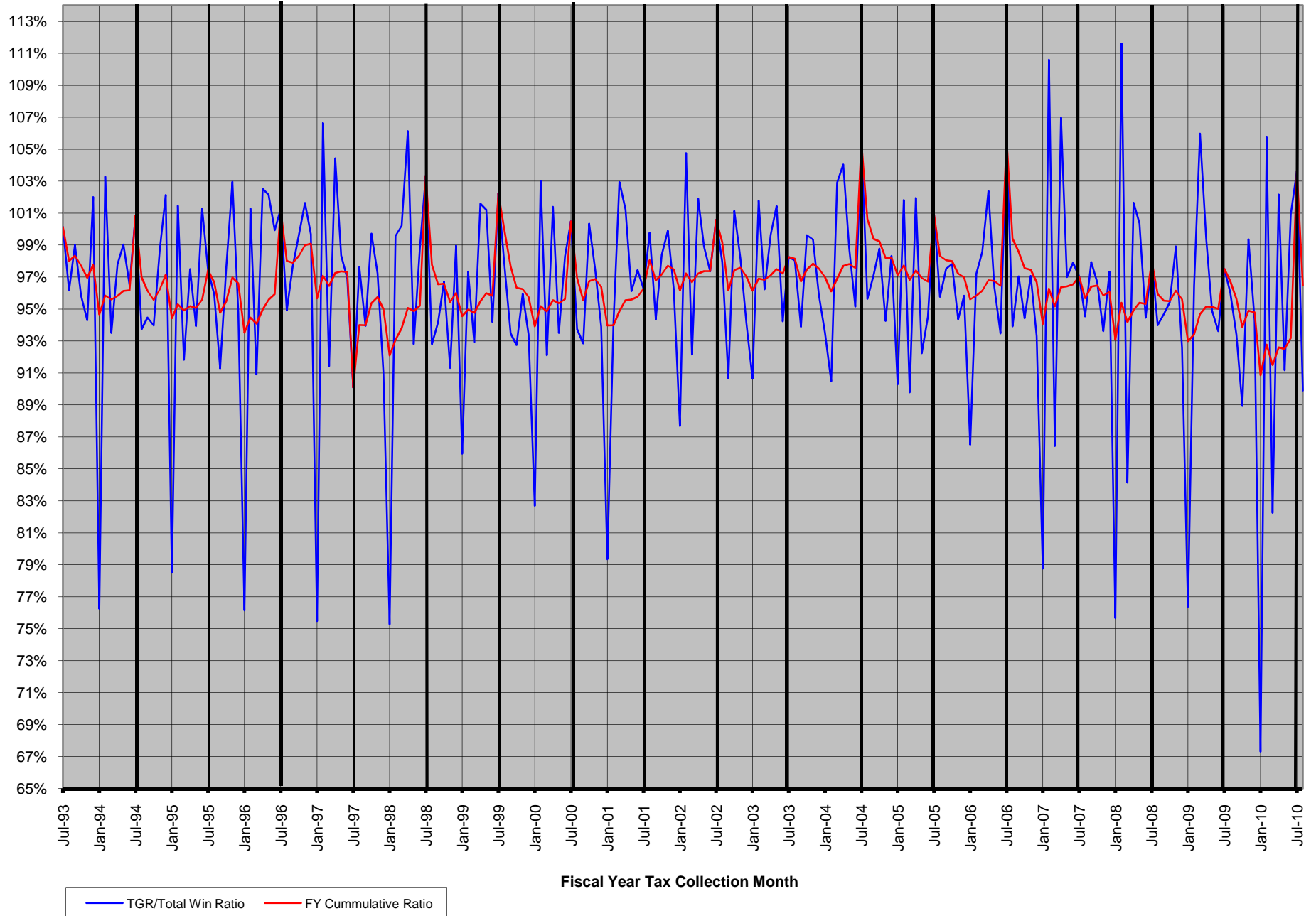


TABLE 7M
Statewide Average Tax Rate (Percentage Fees from TGR/Taxable Gaming Revenue(TGR))
Fiscal Year Tax Collection Basis: July 1993 - July 2010

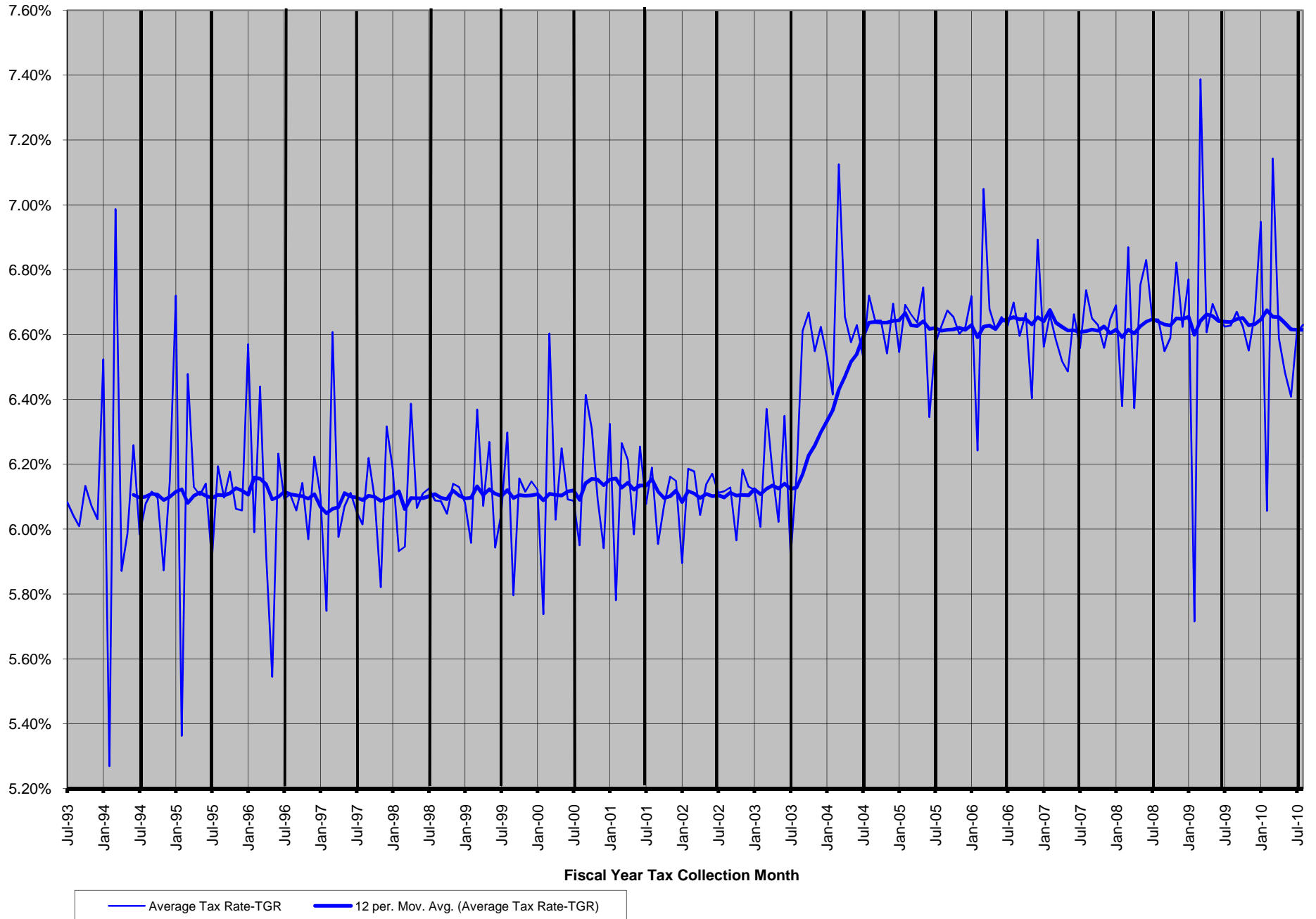


TABLE 8M
Statewide Total Win, Slot Win and Table Games Win
Fiscal Year Tax Collection Basis: July 1993 - July 2010

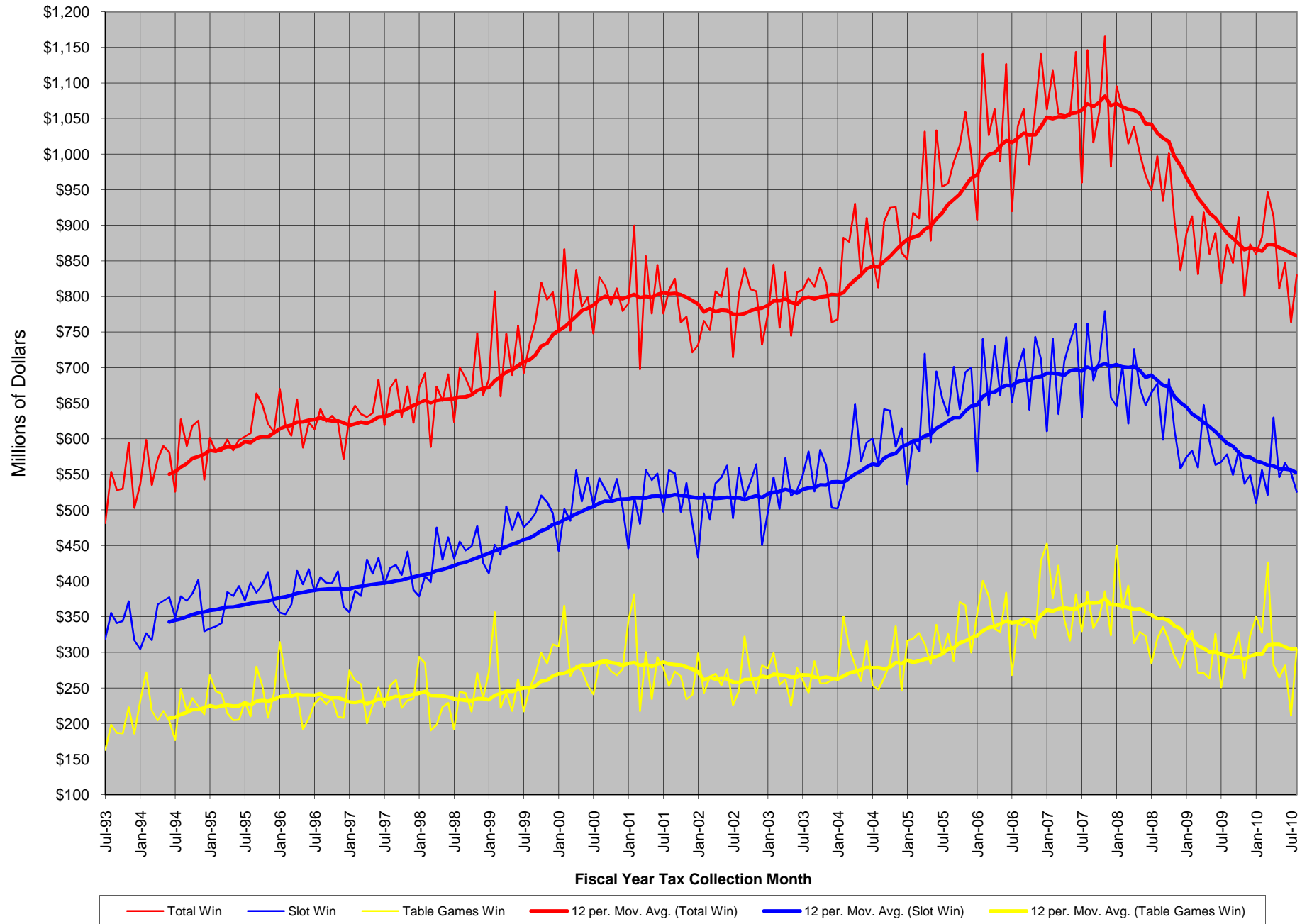


TABLE 9M
Statewide Total Win
Fiscal Year Tax Collection Basis: July 1993 - July 2010

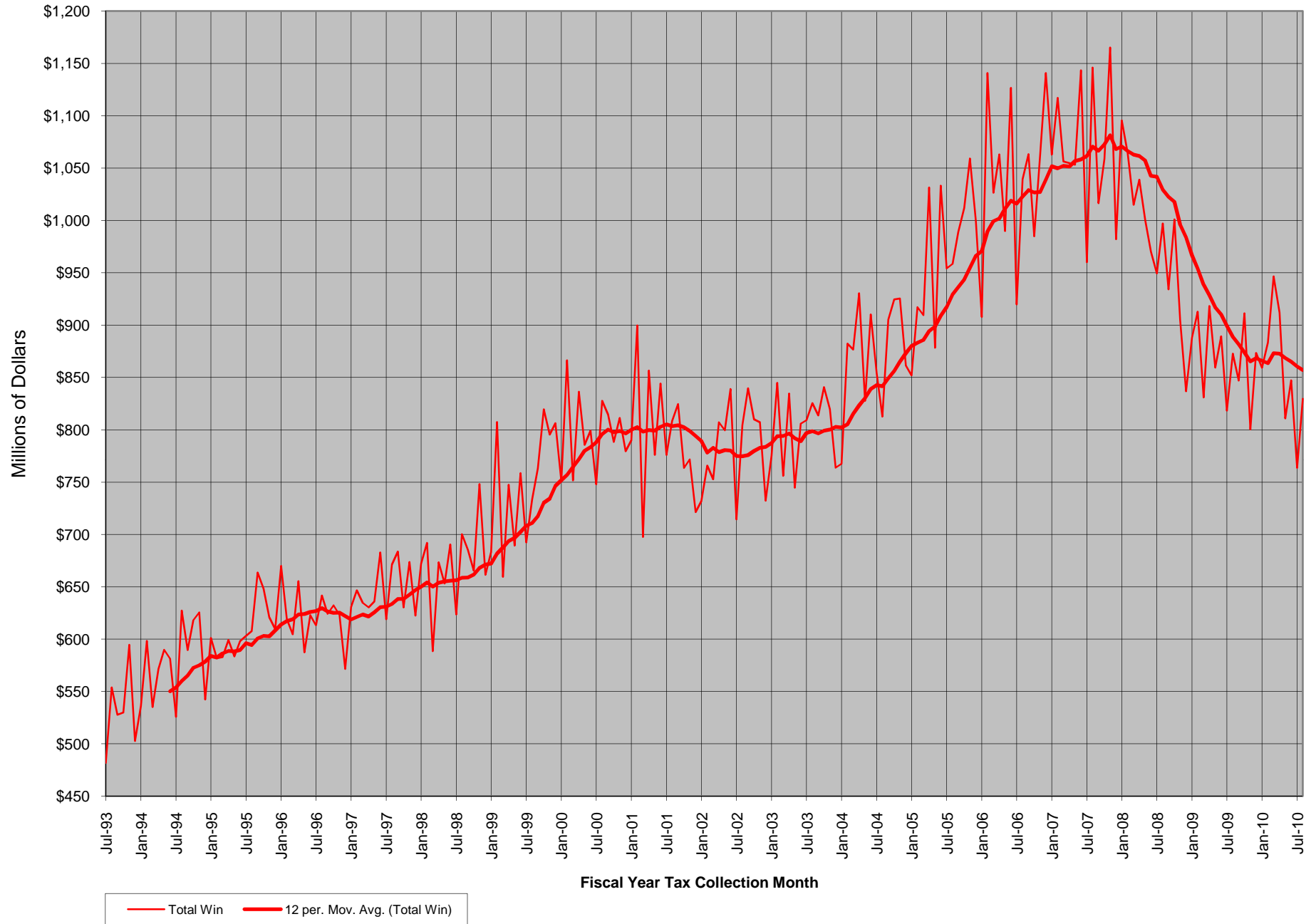


TABLE 10M
Statewide Slot Win
Fiscal Year Tax Collection Basis: July 1993 - July 2010

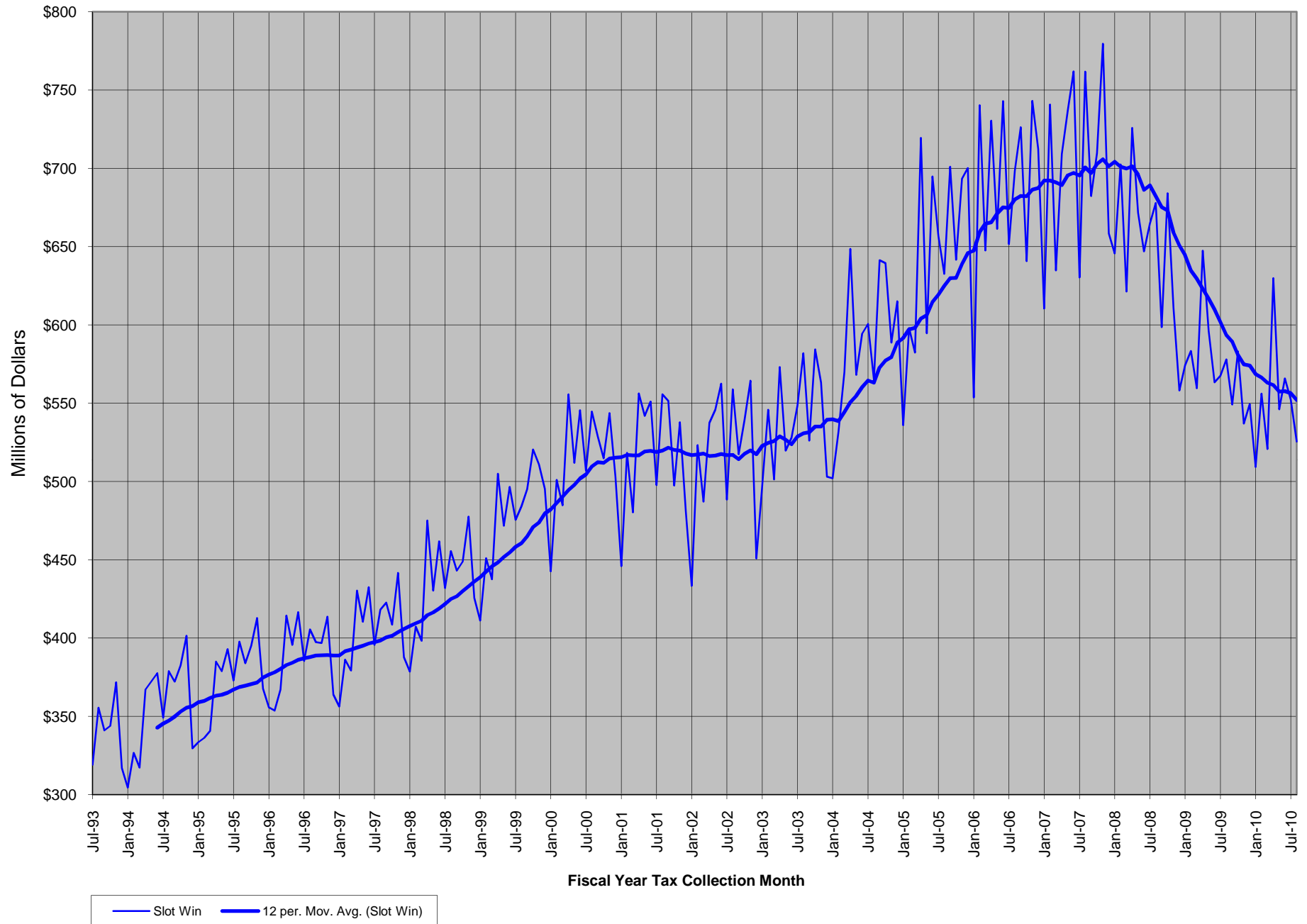


TABLE 11M
Statewide Slot Coin-In
Fiscal Year Tax Collection Basis: July 1993 - July 2010

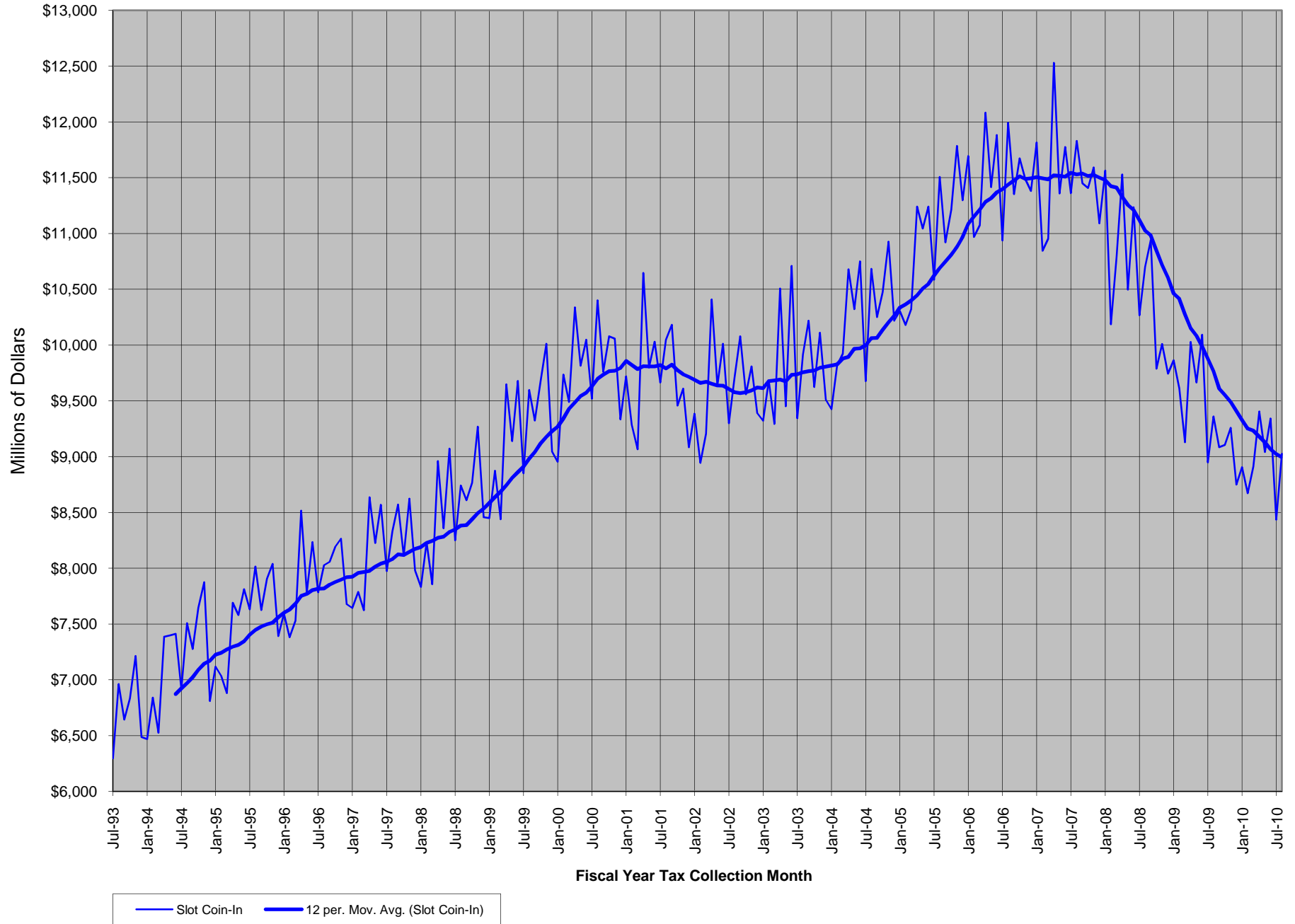
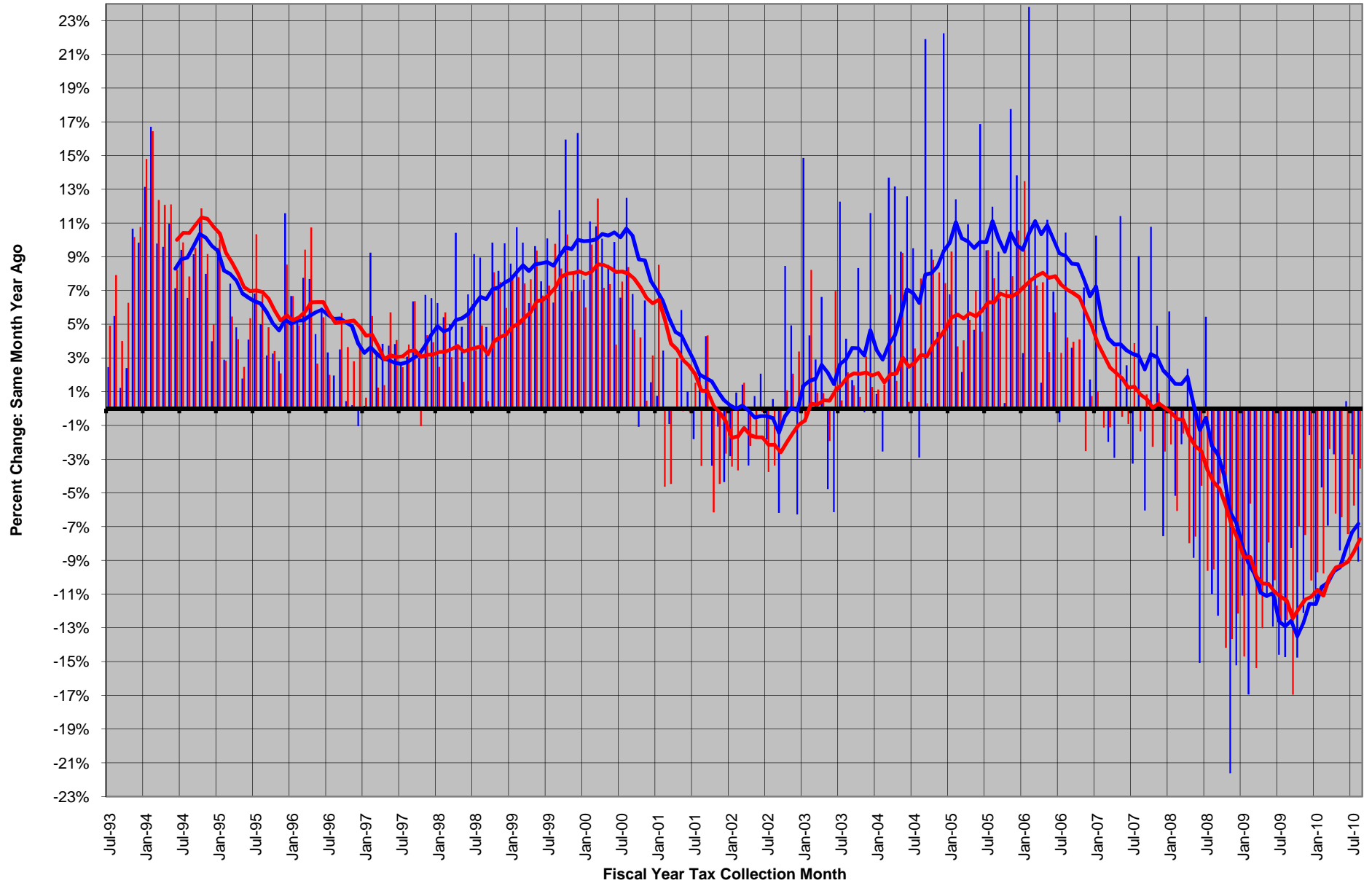


TABLE 12M
Comparison of the Growth in Statewide Slot Win and Slot Coin-In - Month versus Same Month Year Ago
Fiscal Year Tax Collection Basis: July 1993 - July 2010



— Slot Win - Year/Year Growth
 — Slot Coin-In - Year/Year Growth
 — 12 per. Mov. Avg. (Slot Win - Year/Year Growth)
 — 12 per. Mov. Avg. (Slot Coin-In - Year/Year Growth)

TABLE 13M
Statewide Slot Win % (Slot Win / Slot Coin-In)
Fiscal Year Tax Collection Basis: July 1993 - July 2010

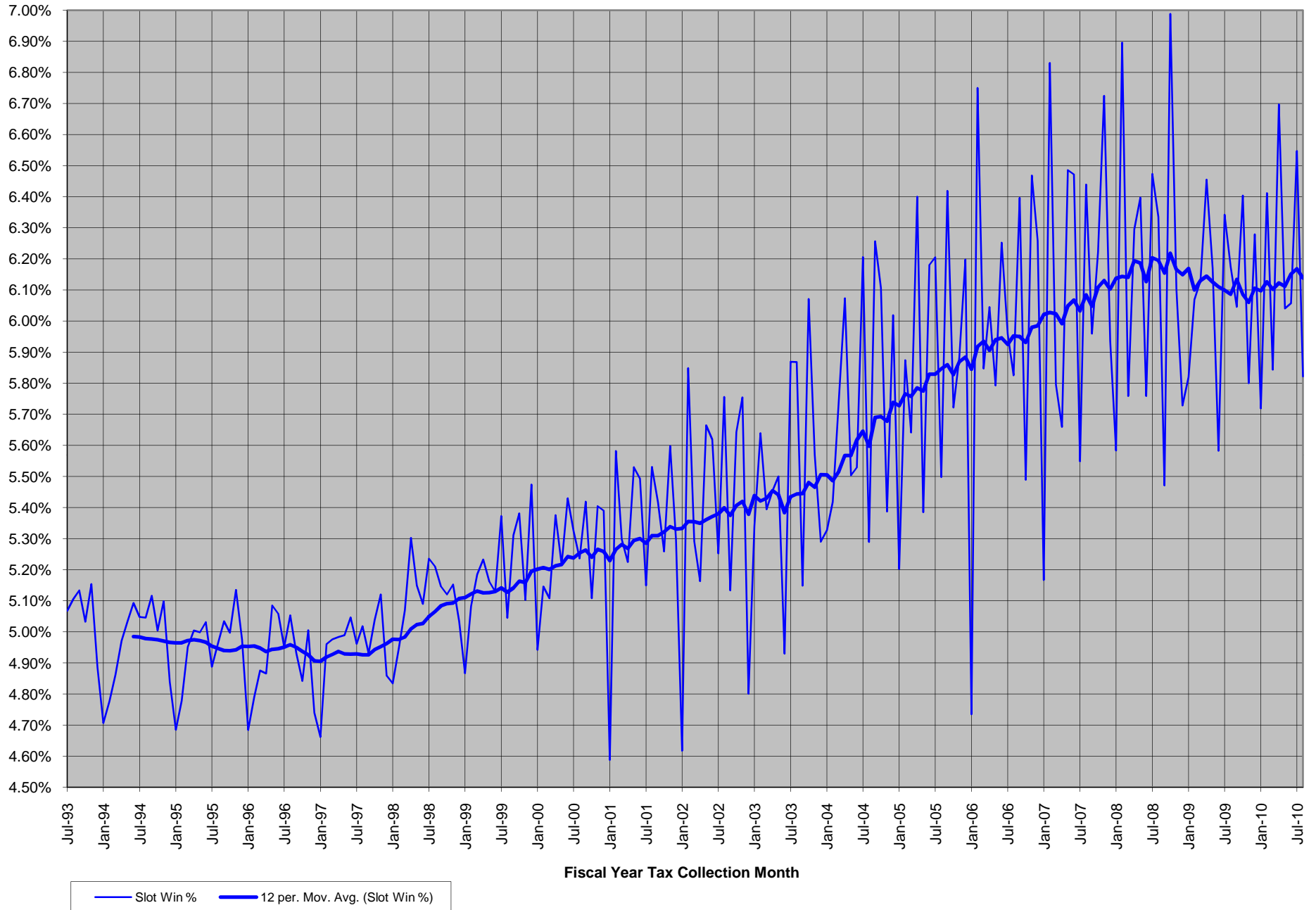


TABLE 14M
Statewide Number of Slot Machines (Non-restricted)
Fiscal Year Tax Collection Basis: July 1993 - July 2010

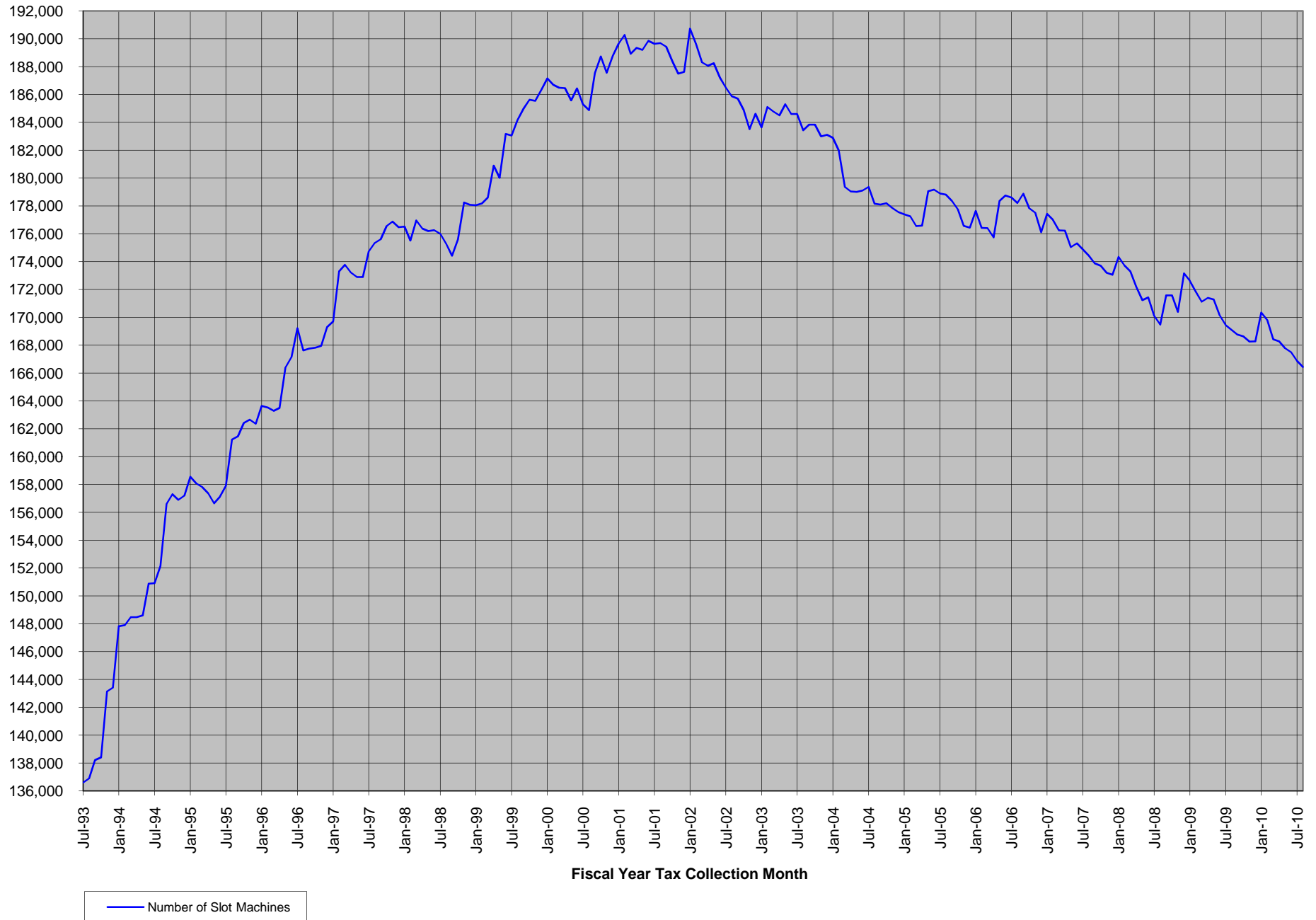


TABLE 15M
Statewide Win per Slot
Fiscal Year Tax Collection Basis: July 1993 - July 2010

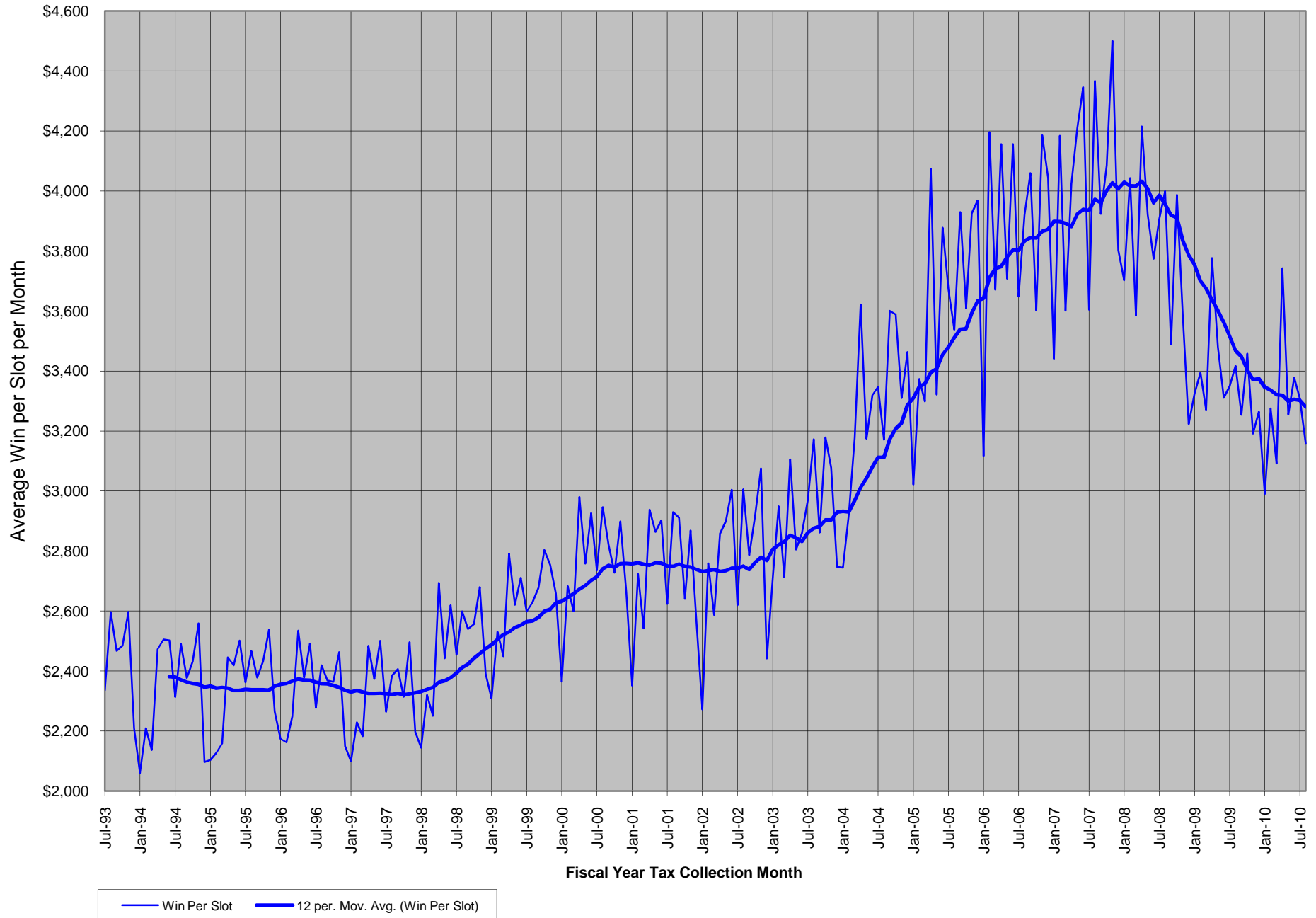


TABLE 16M
Statewide Coin-In per Slot
Fiscal Year Tax Collection Basis: July 1993 - July 2010

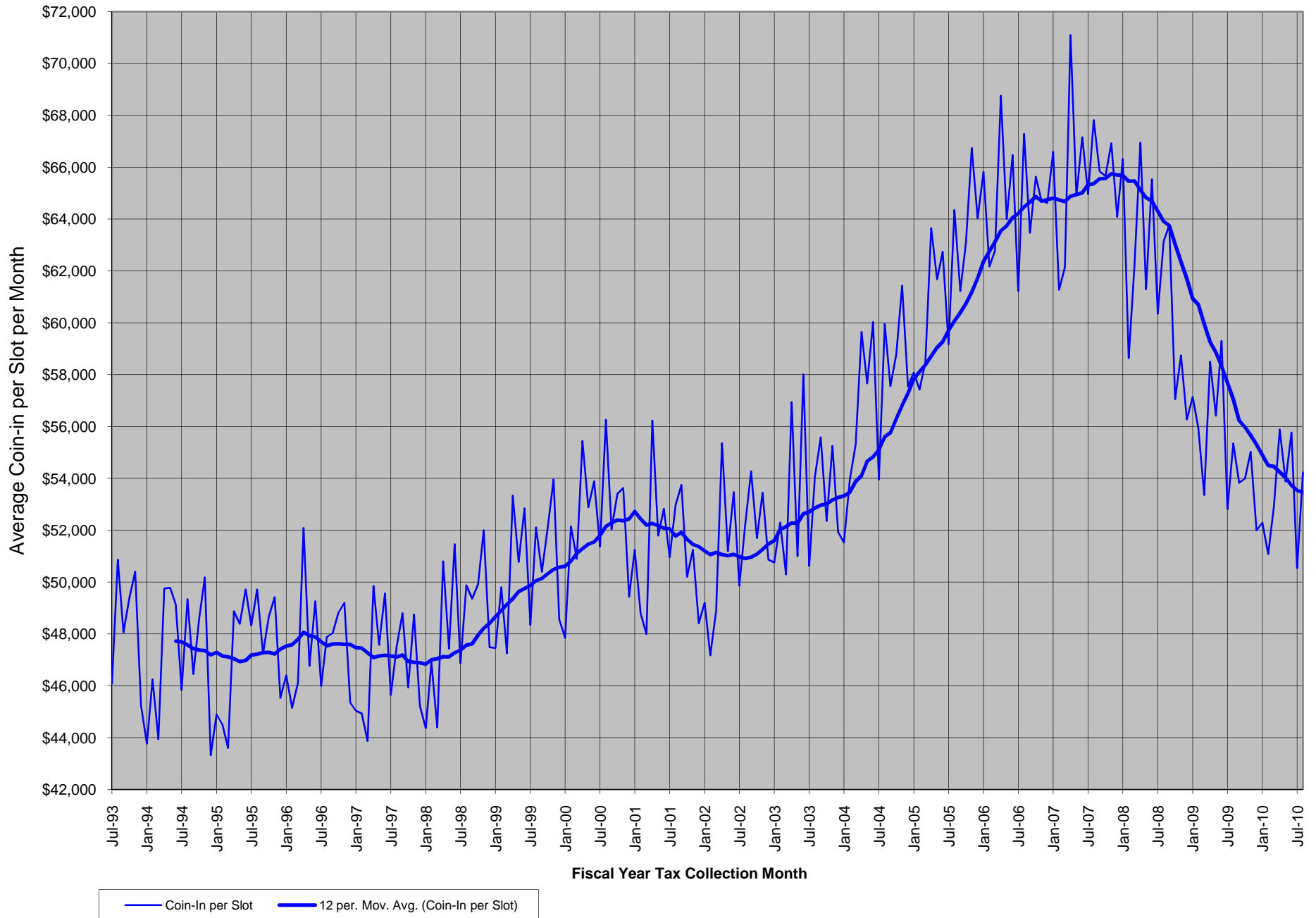


TABLE 17M
Comparison of the Growth in Statewide Win Per Slot and Coin-In per Slot - Month versus Same Month Year Ago
Fiscal Year Tax Collection Basis: July 1993 - July 2010

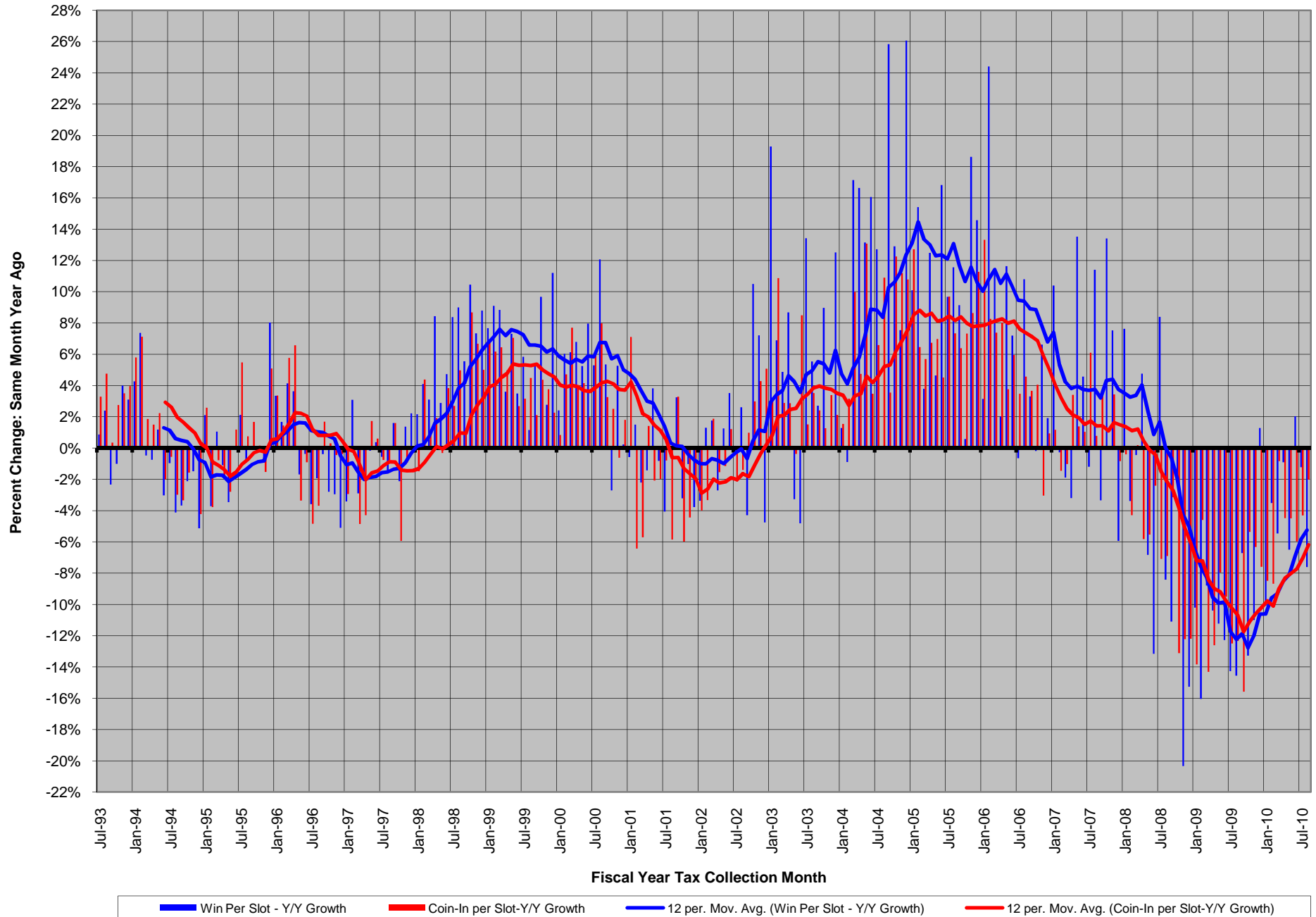


TABLE 18M
Statewide Table Games Win
Fiscal Year Tax Collection Basis: July 1993 - July 2010

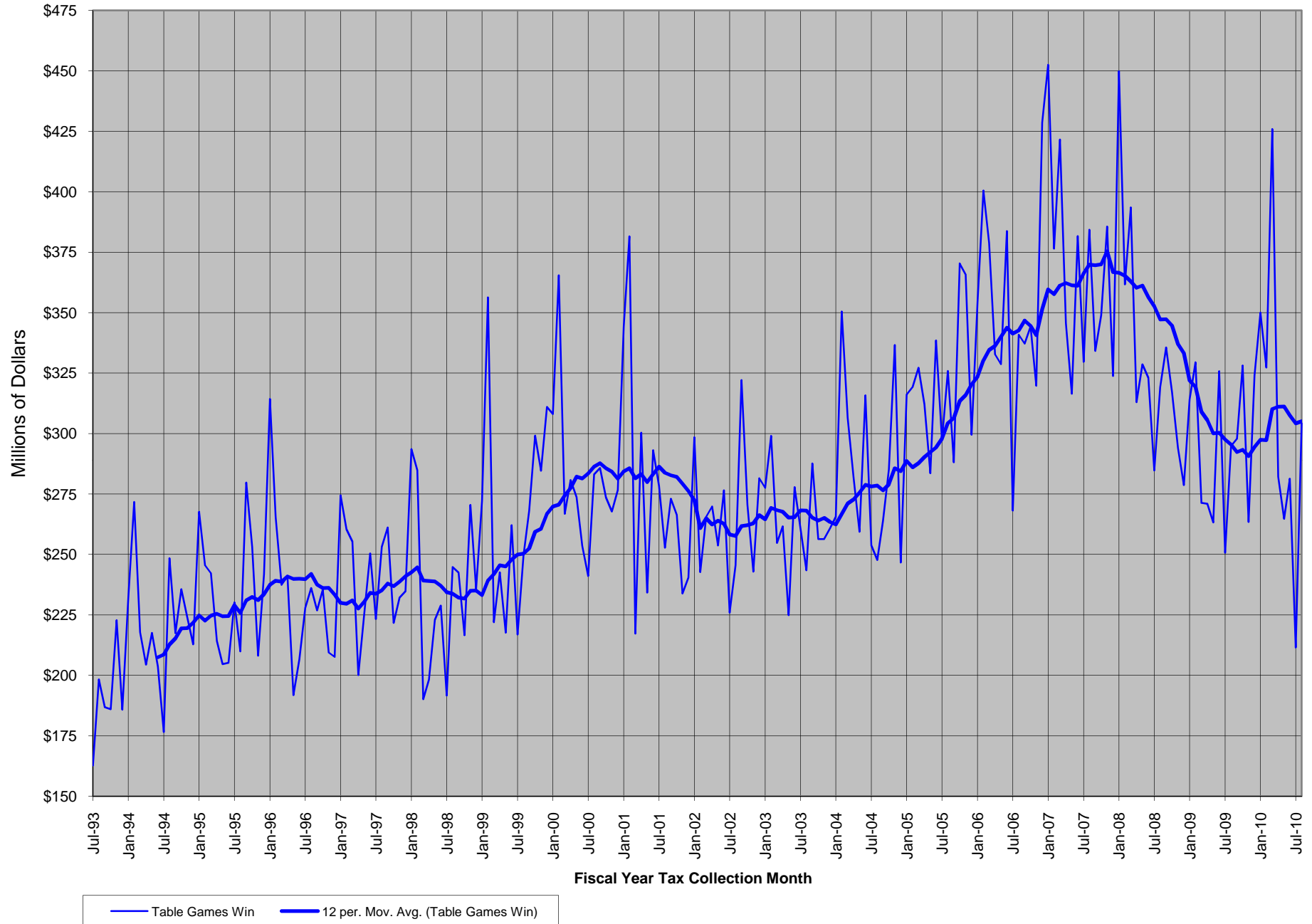


TABLE 19M
Statewide Table Games Drop
Fiscal Year Tax Collection Basis: July 1993 - July 2010

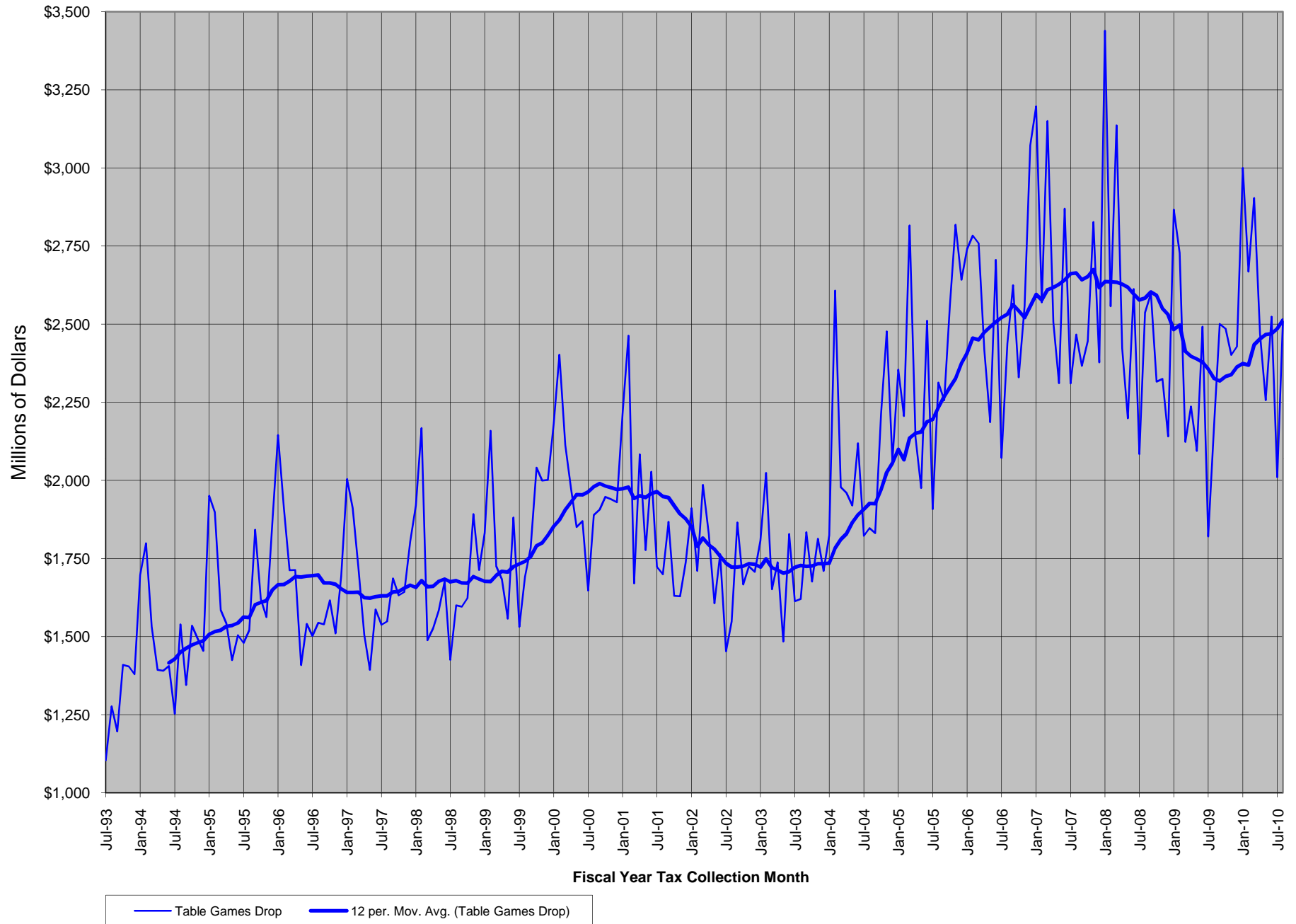


TABLE 20M
Comparison of the Growth in Statewide Table Games Win and Table Games Drop - Month versus Same Month Year Ago
Fiscal Year Tax Collection Basis: July 1993 - July 2010

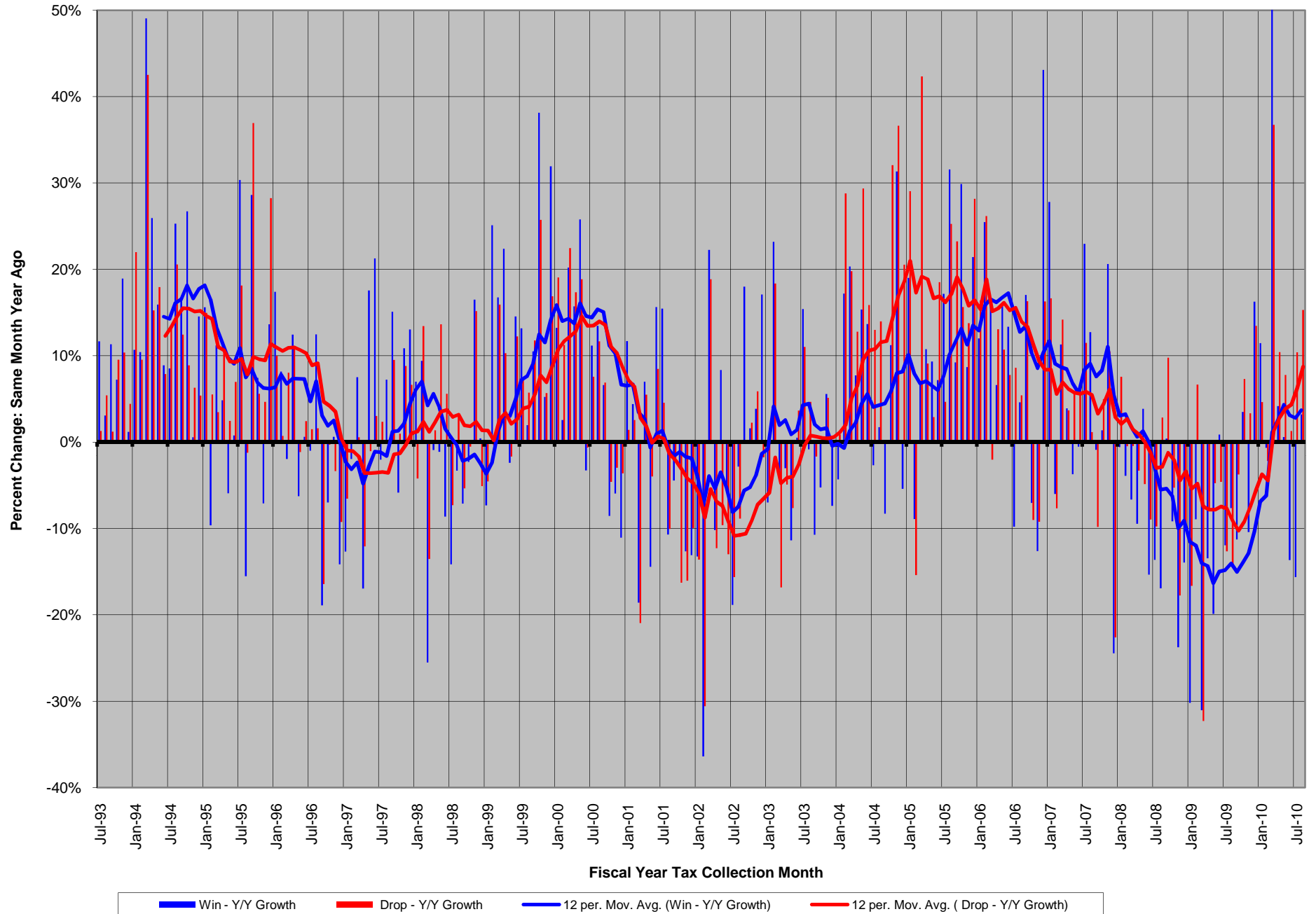


TABLE 21M
Statewide Table Games Win % (Table Games Win / Table Games Drop)
Fiscal Year Tax Collection Basis: July 1993 - July 2010

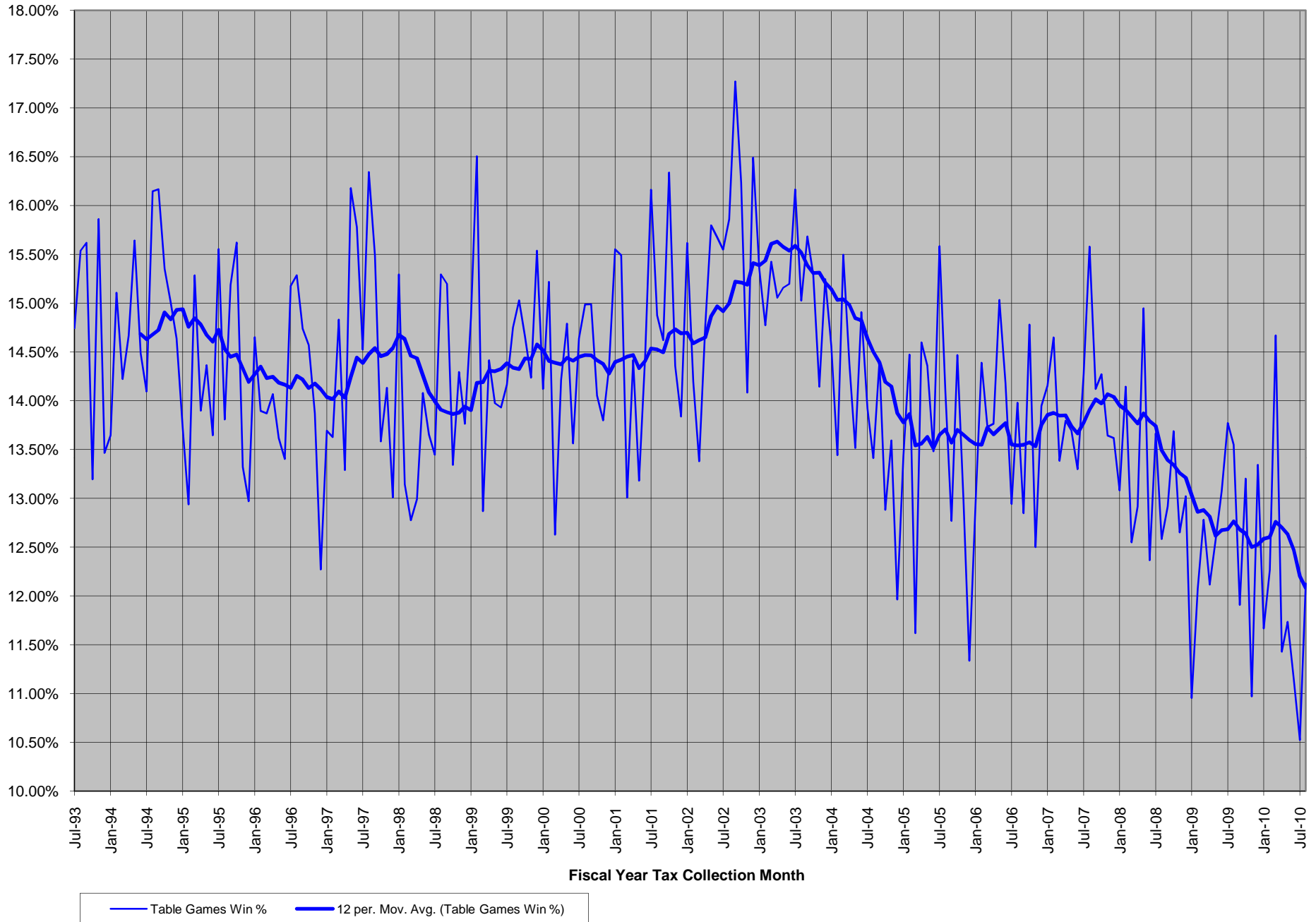


TABLE 22M
Statewide Number of Table Games
Fiscal Year Tax Collection Basis: July 1993 - July 2010

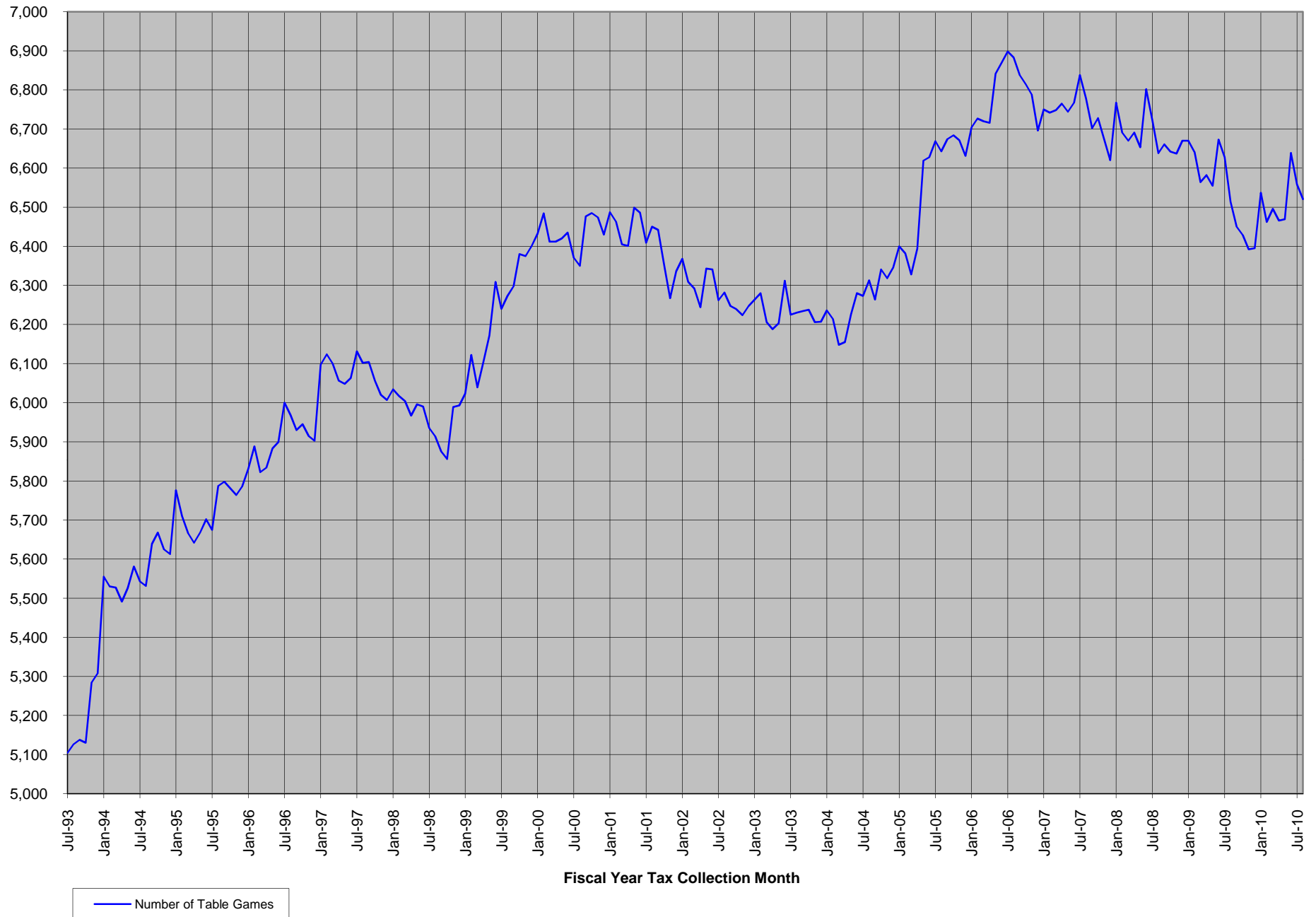


TABLE 23M
Statewide Win per Table Game
Fiscal Year Tax Collection Basis: July 1993 - July 2010

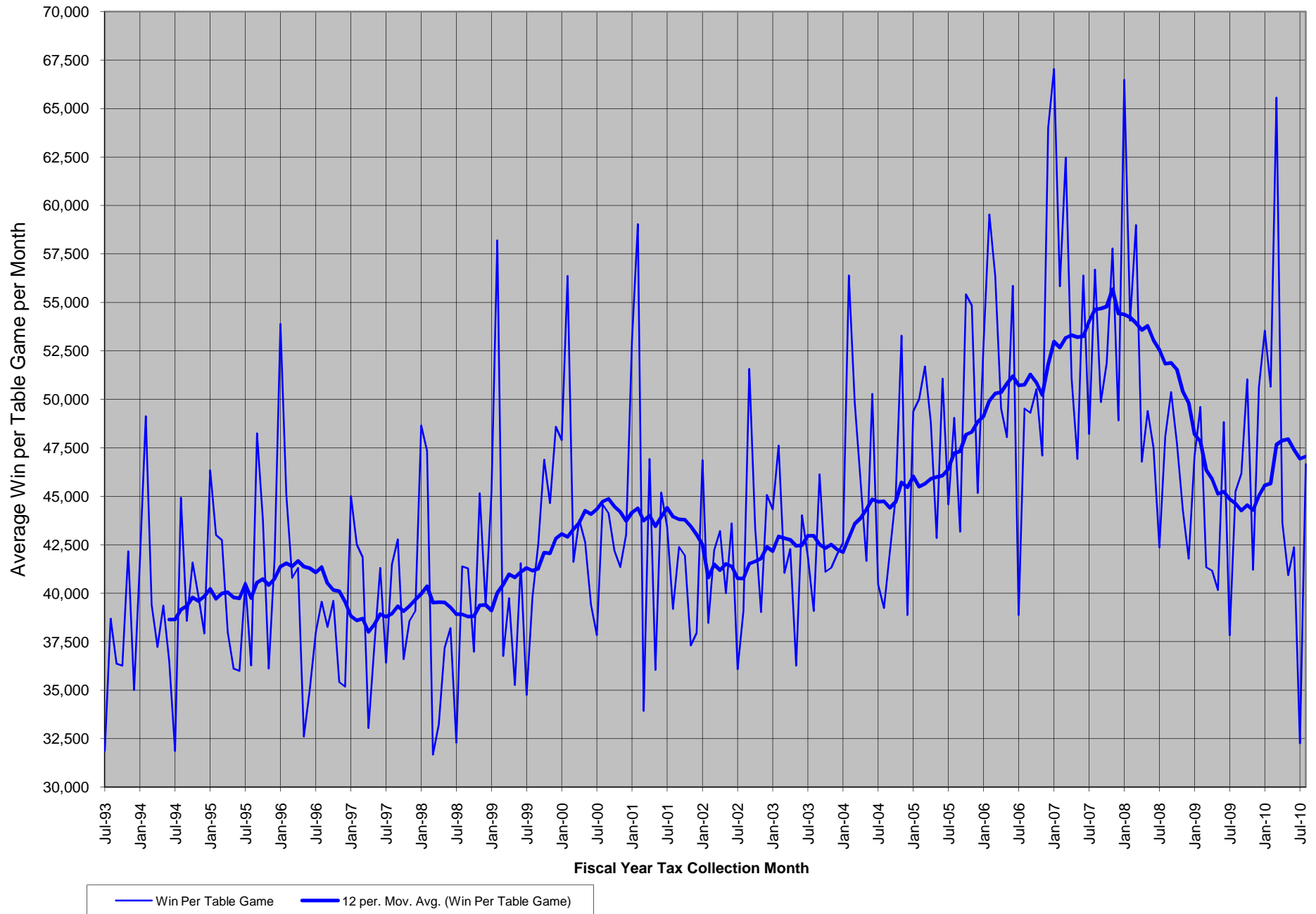


TABLE 24M
Statewide Drop per Table Game
Fiscal Year Tax Collection Basis: July 1993 - July 2010

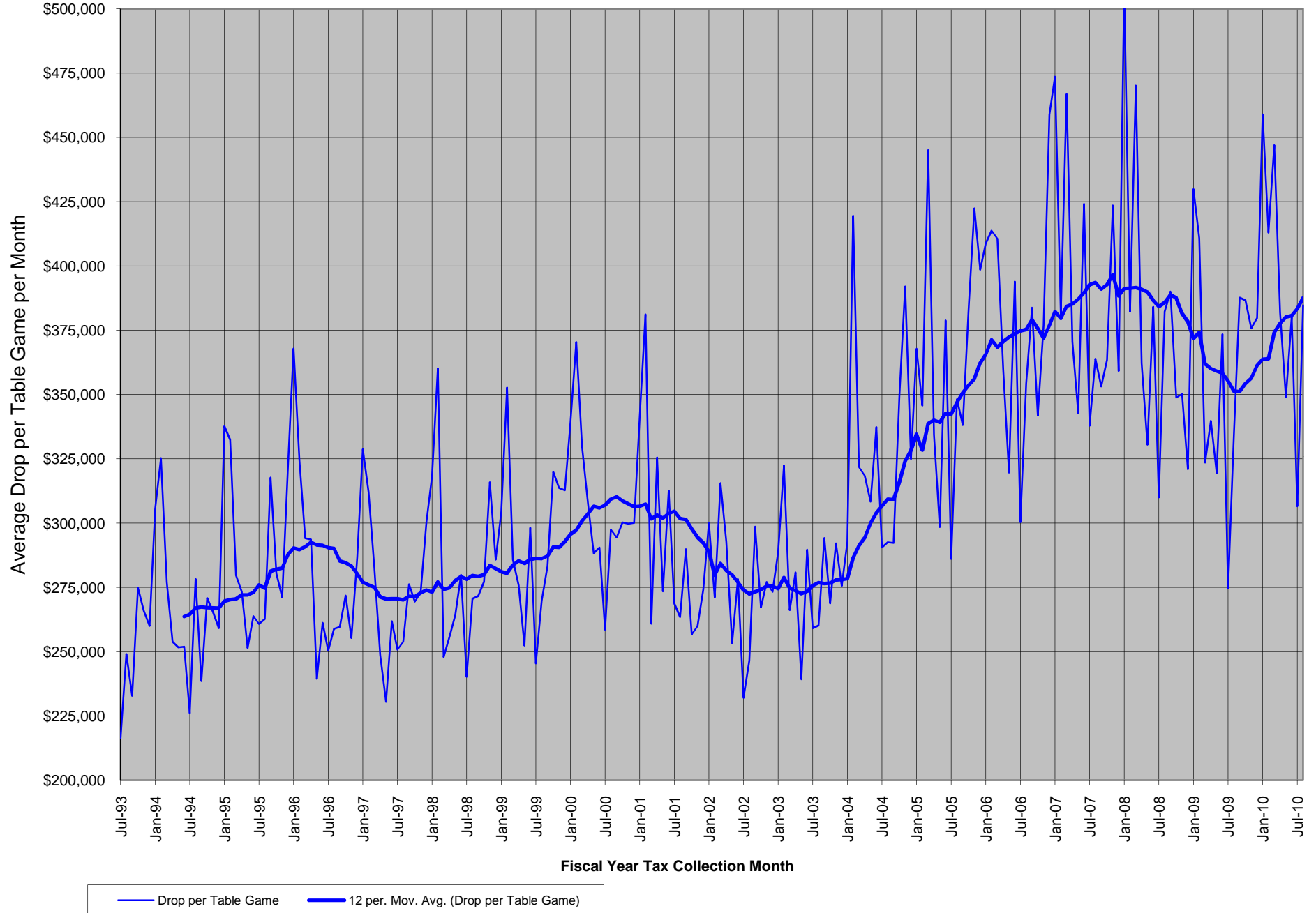


TABLE 25M
Comparison of the Growth in Statewide Win Per Table Game and
Drop per Table Game - Month versus Same Month Year Ago
Fiscal Year Tax Collection Basis: July 1993 - July 2010

