

North Lake Tahoe FPD Third Creek Project 2008

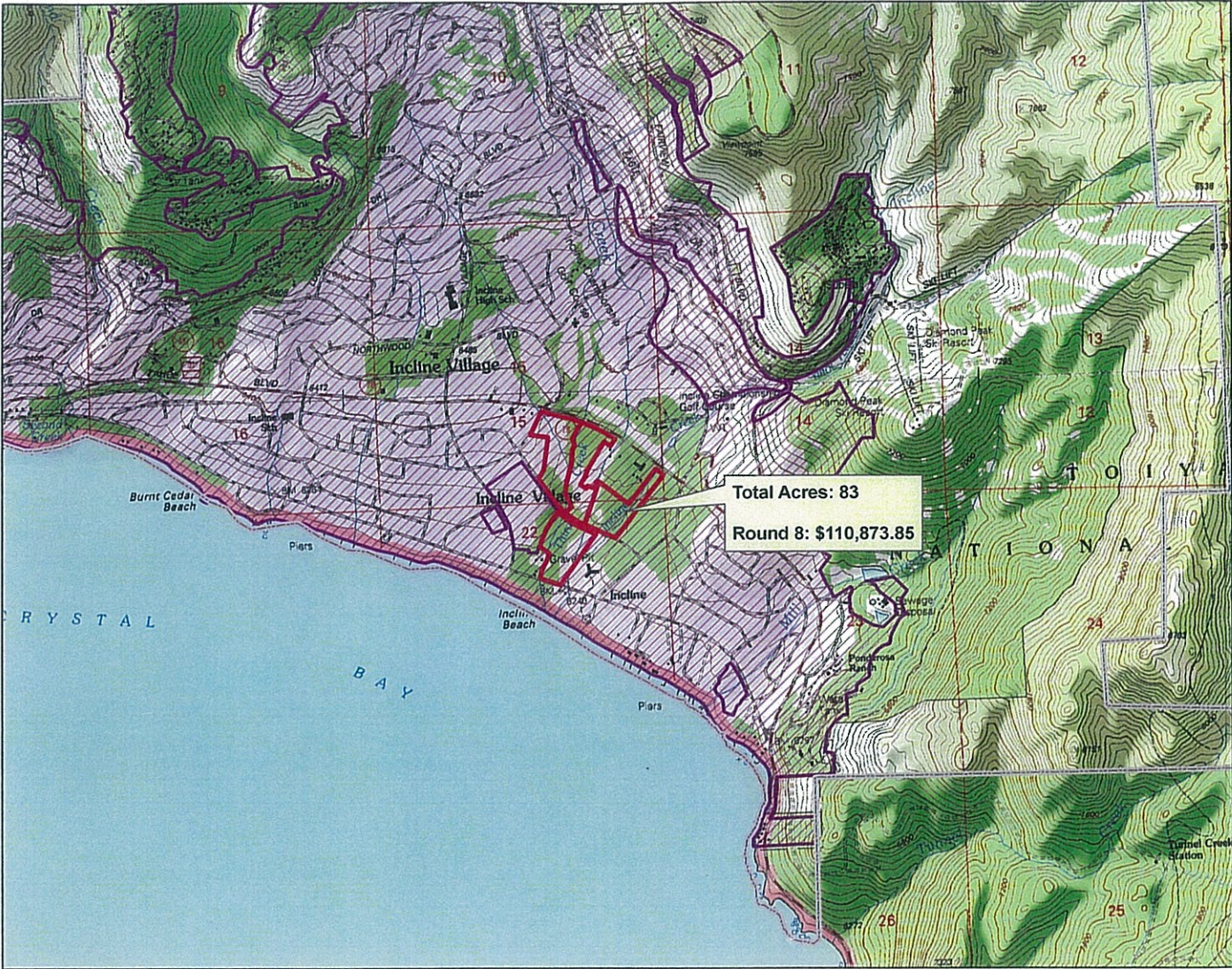
Site Description:

The 83-acre Third Creek fuels reduction project was in Incline Village combined mechanical and hand thinning in the stream environment zones adjacent to Third Creek and Incline Creek. The North Lake Tahoe FPD Slide Mountain Hand Crew removed conifers and decadent riparian vegetation from the creek banks. The materials were then moved to central landing by a cut-to-length forwarder and chipped or piled for fall burning. Machinery was kept a safe distance from the creeks to avoid excessive erosion but in close enough proximity to greatly increase the efficiency of the project. The project demonstrated TRPA's commitment to doing cost efficient and mechanically aided fuels reduction projects within stream environment zone while protecting the environment.

Before:



After:



Legend

- Fire Protection District
- Project Area
- Fire Safe Chapters



1:24,000

UTM NAD 83 Zone 10N



TFFT
TAHOE FIRE & FUELS TEAM

EXHIBIT F - TAHOE
Document consists of 6 pages.
Entire exhibit provided.
Meeting Date: 03-29-10

Tahoe Douglas FPD China Gardens Project 2009

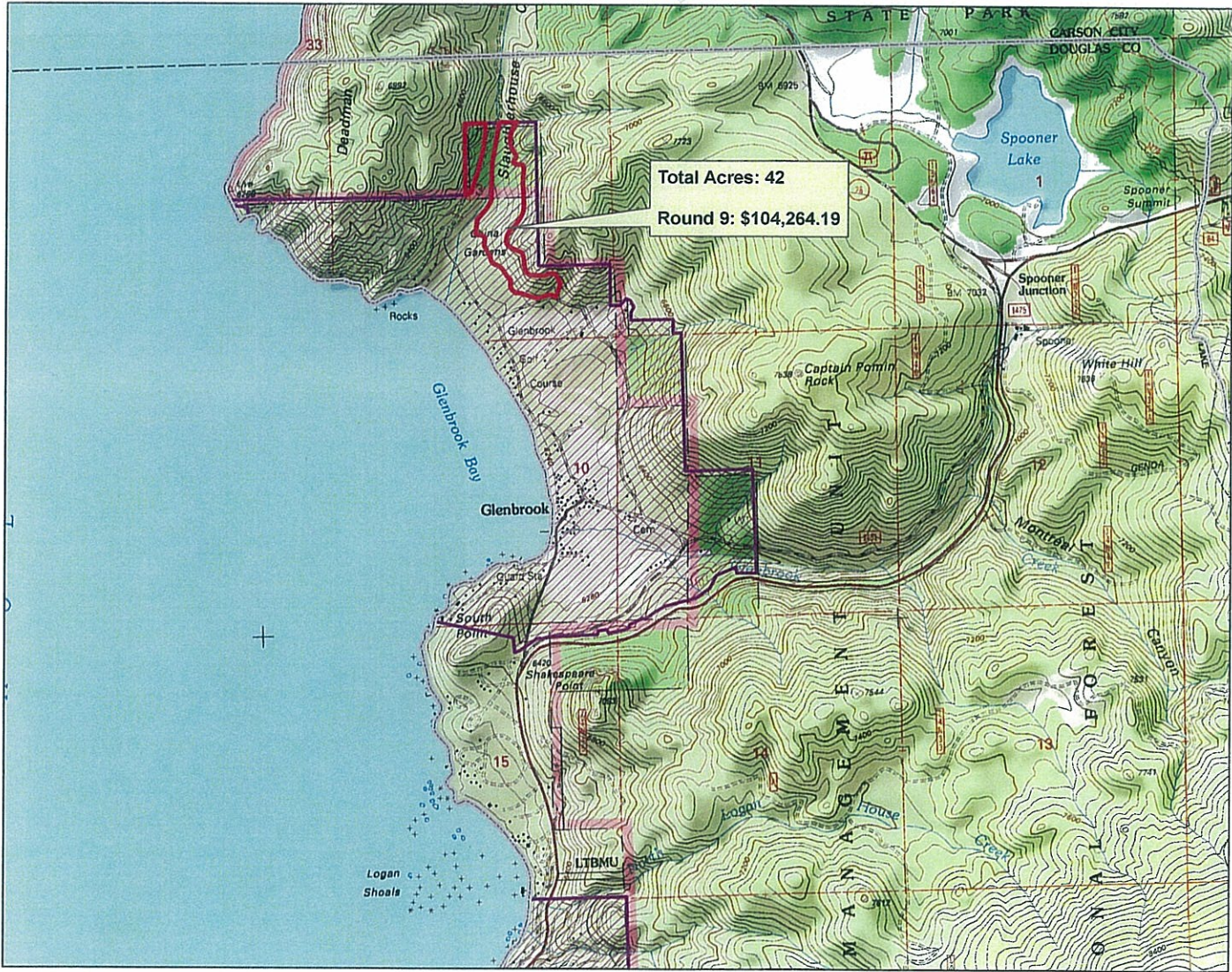
Site Description:

Slaughterhouse Canyon bisects a large 6.4 square mile watershed that extends 7 miles from State Route 28 on the north, through the community of Glenbrook to an outflow point on the shore of Lake Tahoe. Seasonal, intermittent water draining from numerous lateral tributaries flows into the main Slaughterhouse channel ultimately being discharged into Lake Tahoe after passing through an extensive meadow. A variety of hazardous forest fuel complexes exist in this watershed ranging from dense, decadent stands of brush on steep, dry southerly facing exposures, to scattered overstory stands of second growth pine with an understory of brush, to overstocked mixed conifer stands existing on north facing slopes and drainage bottoms where more favorable growing conditions occur. In the canyon bottom, several meadows have formed that support grass and sedge cover with dense stands of decadent willows occupying the active channel. Throughout the canyon, high levels of tree mortality resulting from extended

Before:



After:



Legend

- Fire Protection District
- Project Area
- Fire Safe Chapters



1:24,000

UTM NAD 83 Zone 10N

0 0.25 0.5 1 Miles



TFFT
TAHOE FIRE & FUELS TEAM

Meeks Bay FPD Tahoma Defense Project 2009

Site Description:

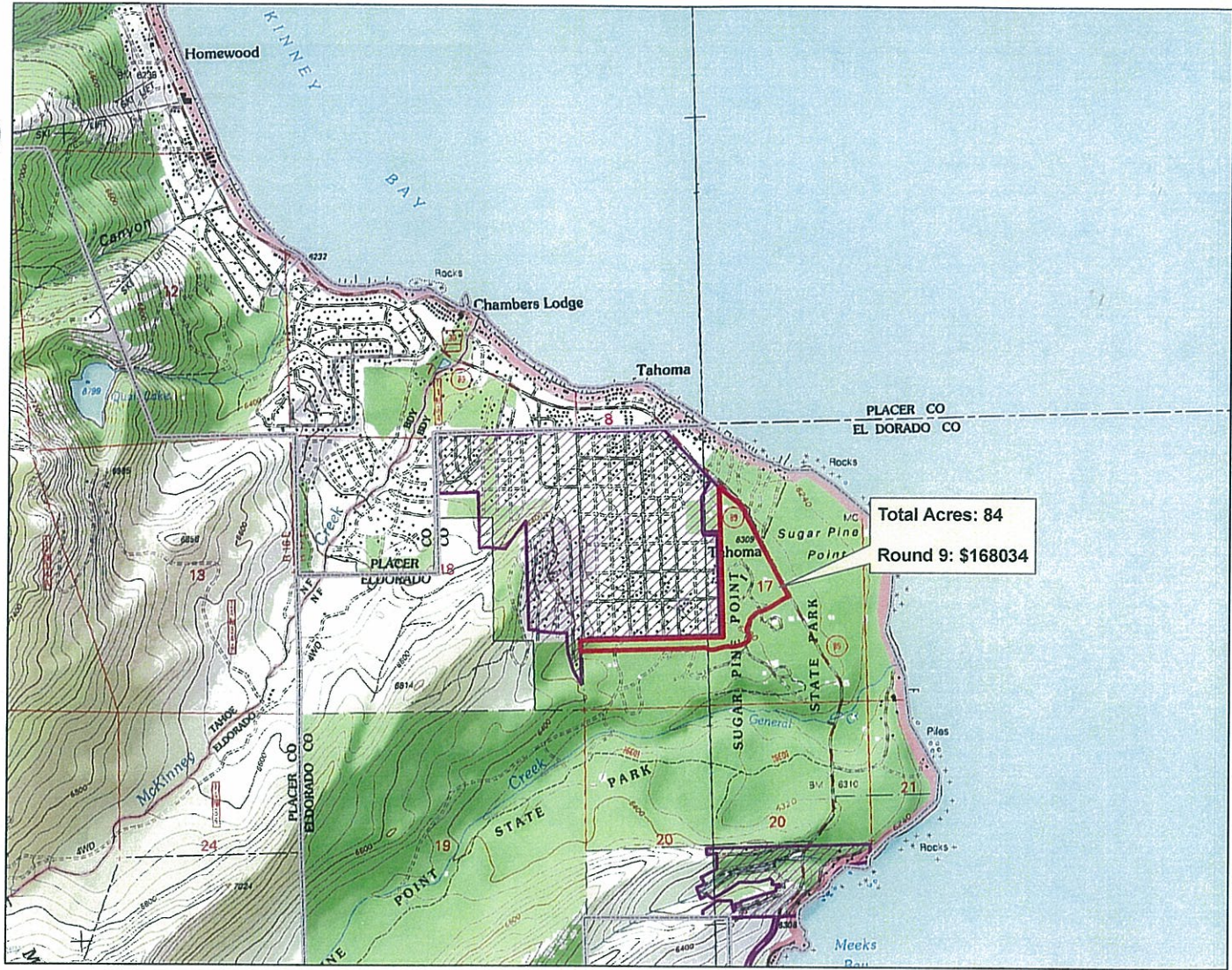
The purpose of the Tahoma Defense Zone project is to reduce forest fuels and improve native forest composition and structure adjacent to the Tahoma neighborhood. Project work will include hand-crew forest thinning, chipping, mechanical mastication, and pile burning. Trees to be removed shall be marked with paint by or under the supervision of a Registered Professional Forester (RPF). Pile burning shall be implemented in accordance with county and state regulations including filing of a Smoke Management Plan.

The goal of this project is to protect life, property and the environment from the threat of catastrophic wildfire, and to improve native forest composition and structure. Objectives are to thin trees and reduce fuels to reduce the risk of crown fire, reduce potential flame lengths of surface fire, provide defensible space around structures, increase average tree diameter, and provide for recruitment of future old-growth trees. Project shall maintain valuable components of wildlife habitat including large dead trees, large downed logs, and a multi-layered forest canopy.

Before:

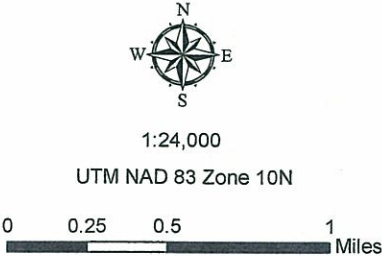


After:



Legend

-  Fire Protection District
-  Project Area
-  Fire Safe Chapters



NorthTahoe FPD Chambers/Quail Project 2009

Site Description:

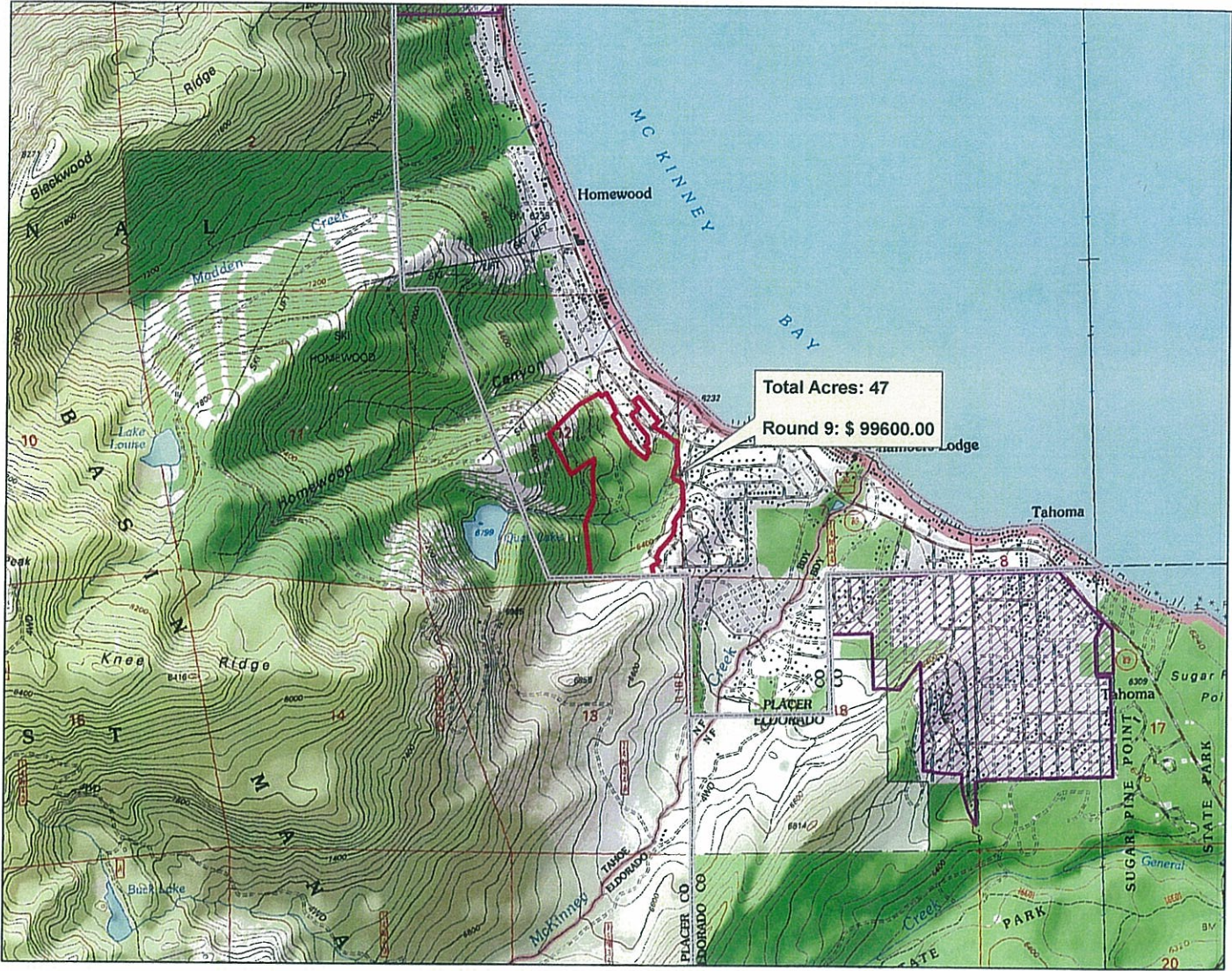
The purpose of the Quail Lake Fuel Reduction Project is to reduce forest fuels surrounding the Quail Creek area and the adjacent neighborhoods. This project will create a treated area to the south of Homewood Ski Area and enhance the Chambers Foothills project.

The vegetation type is a Sierra Mixed Conifer forest with a slight understory brush component present in small canopy openings created by prior logging activities. Large openings without any large trees are occupied by tall, dense brush. Some areas have heavy concentrations of dead and downed trees. The tract has an average slope of 10%, with areas of slopes approaching 30%. Quail Creek runs through the middle of the project area, dividing it into a north unit and a south unit. The harvest will focus on thinning clumps of trees, removing suppressed trees, and improving the stand health by targeting diseased trees. Mastication will treat the slash and the ground fuels. A separate hand crew chipping operation will treat sensitive areas.

Before:

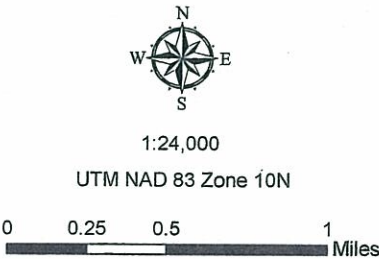


After:



Legend

- Fire Protection District
- Project Area
- Fire Safe Chapters



City of South Lake Tahoe FD Cold Creek Project 2009

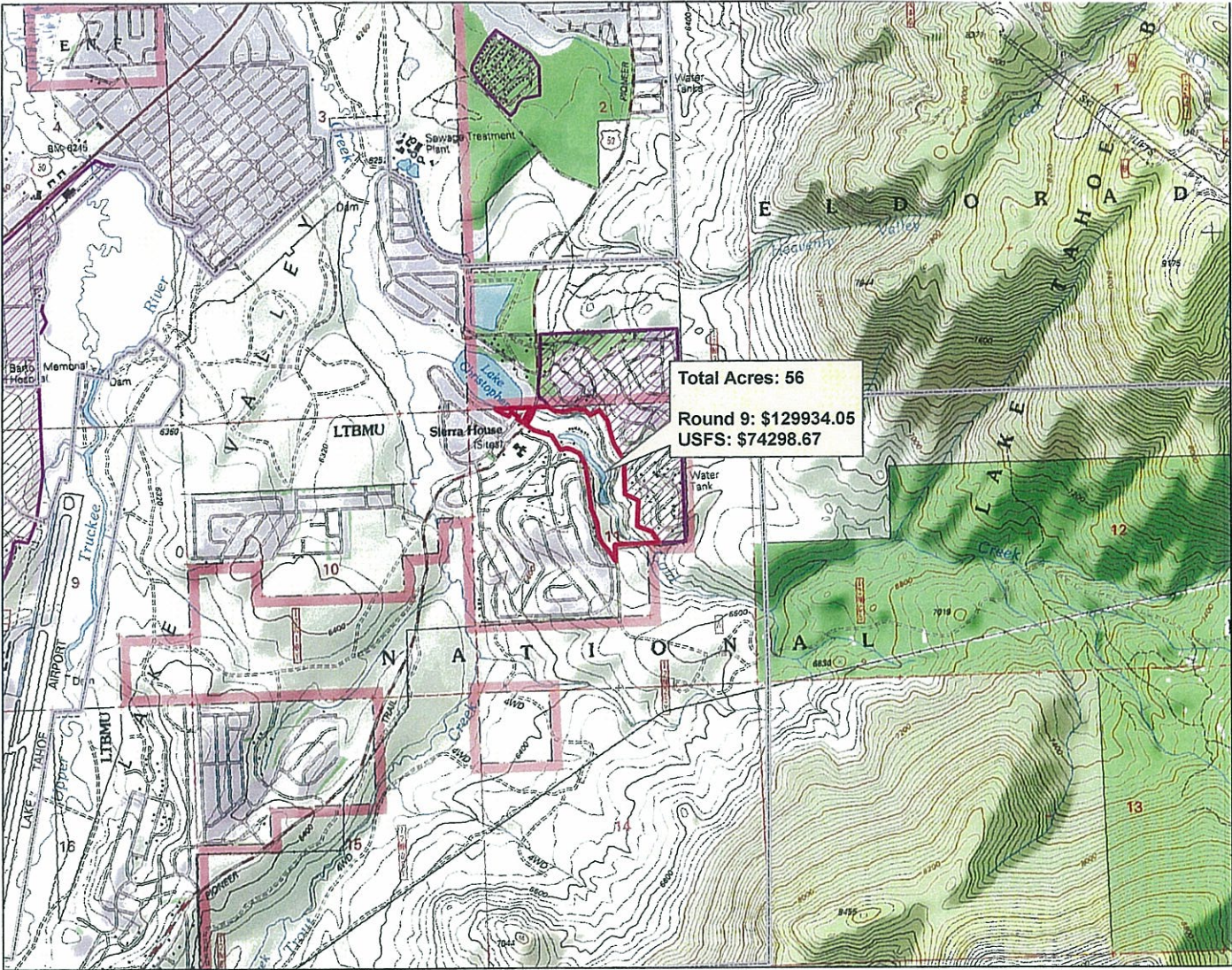
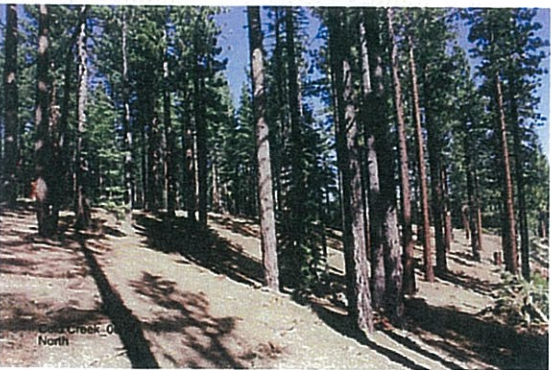
Site Description:

The Cold Creek Project is a 56-acre hazardous fuel reduction project located on lands owned by the City of South Lake Tahoe. This parcel is located immediately adjacent to several housing communities, as well as the Sierra House Elementary School. The project area is dominated by Jeffrey Pine (*Pinus jeffreyi*) with significant White Fir regeneration in the understory. Nominal Lodgepole Pine (*Pinus contorta*) and Quaking Aspen (*Populus tremuloides*) exist around identified Stream Environment Zones (SEZ). There are moderate to heavy concentrations of dead woody surface fuels within the treatment area, primarily from past land management, and insect and drought mortality. The project area has slopes that range from 5 – 65% , with the soils comprised of the Cagwin and Cassenai Series. Both of these series consist of deep and excessively drained soils with rapid permeability and low to medium runoff. The dense forest stands and heavy understory fuels, combined with steep slopes make the likelihood of a crown fire high.

Before:



After:

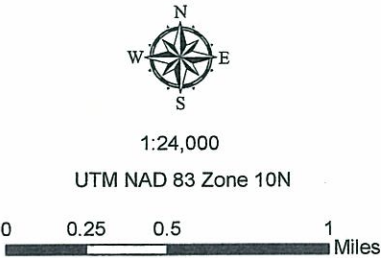


Legend

Fire Department

Project Area

Fire Safe Chapters



Lake Valley FPD Golden Bear Project 2009

Site Description:

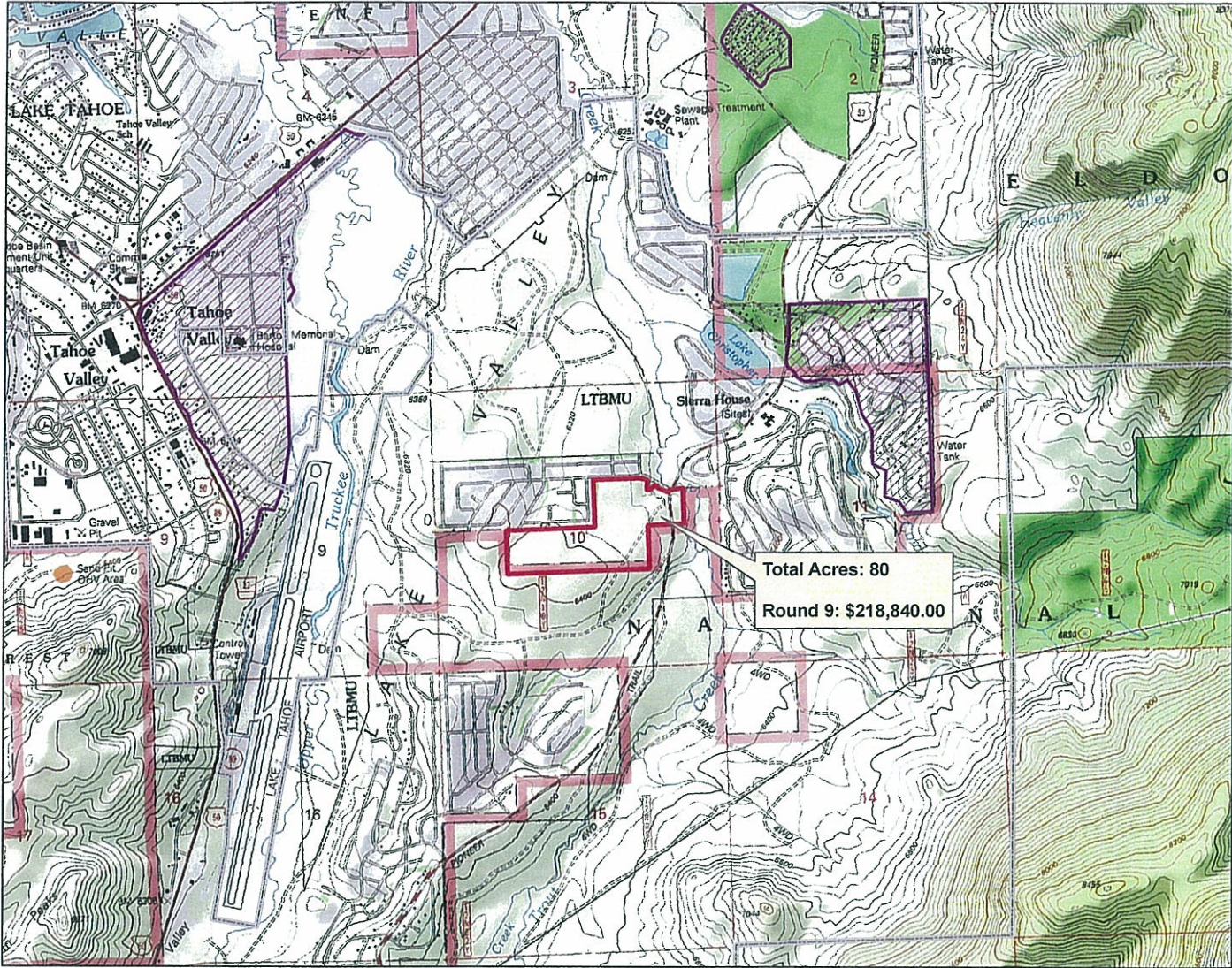
The goal of this project is to reduce the risk of a catastrophic wildfire by reducing forest fuels in the wildland urban interface adjacent to residential communities and roadways; and thereby increasing protection of life, property, and the environment. By breaking up the continuity of live and dead fuels both horizontally and vertically fire intensity decreases, therefore minimizing negative impacts to watersheds and improving fire suppression effectiveness and safety. A secondary objective of the project is to improve forest health by thinning brush and trees from below to reduce competition for light, nutrients, and water.

This project focused on the removal of marked trees and designated non-riparian shrubs for the purpose of reducing the potential for high severity wildfires to the adjacent subdivision. The project consists of approximately 80 acres of land along Pioneer Trail and immediately south of the Montgomery Estates subdivision. The project is located at El Dorado Assessors Parcel Numbers 080-010-15, 080-030-01 and 080-185-02. All parcels are owned and managed by the State of California, California Tahoe Conservancy (CTC).

Before:



After:



Legend

Fire Department

Project Area

Fire Safe Chapters

A north arrow is positioned at the top, pointing towards the top of the page. Below it, the scale is given as '1:24,000' and 'UTM NAD 83 Zone 10N'. A graphical scale bar at the bottom shows distances of 0, 0.25, 0.5, and 1 mile.

The logo for the Tahoe Fire & Fuels Team (TFFT) is located in the bottom right corner. It consists of a circular emblem featuring a bear and the text 'LAKE VALLEY FIRE PROTECTION DISTRICT' and '1947'. Below the emblem, the letters 'TFFT' are displayed in a large, bold, stylized font, with 'TAHOE FIRE & FUELS TEAM' written in a smaller font underneath.