

Carson City 2009 Lands Bill

Legislative Committee on Public Lands

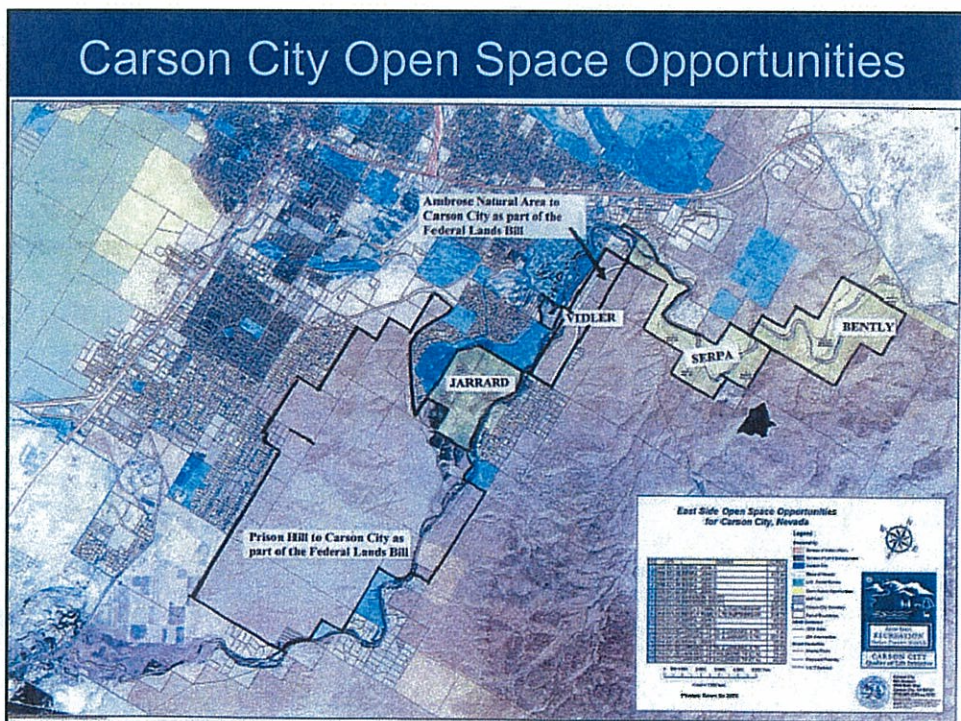
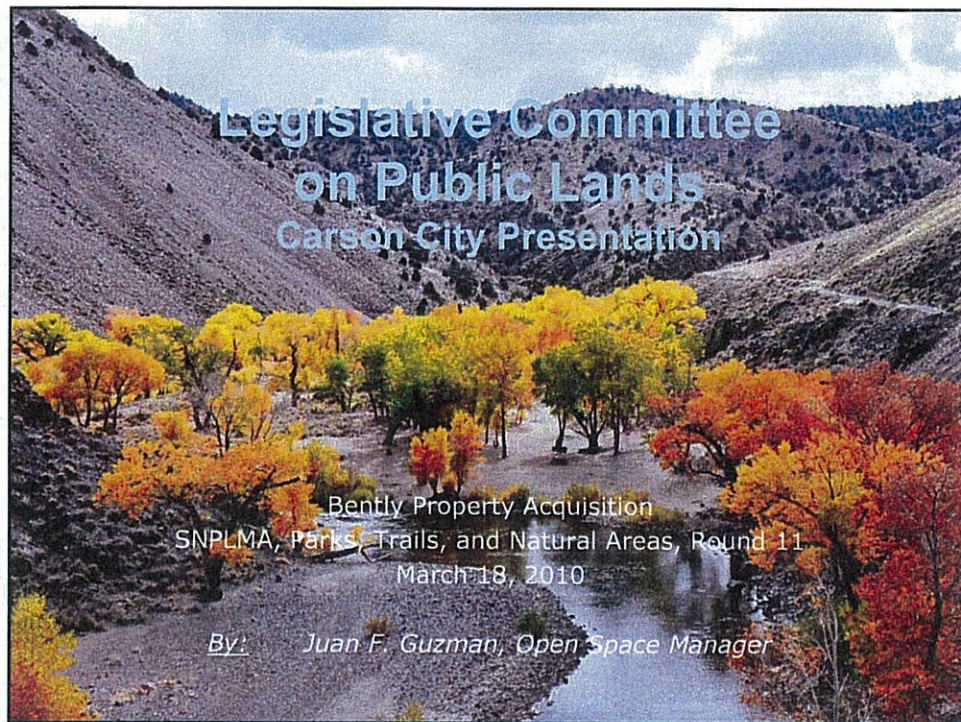
March 18, 2010

Lee Plemel, Carson City Planning Director

Land Transfer Summary

| Ownership Transfer | Purpose | Area | % |
|---------------------------------------|--|-----------|-------|
| Carson City to USFS | USFS Management | 2,264 ac. | 25.5% |
| USFS to Carson City | Natural areas, open space | 935 ac. | 10.5% |
| BLM to Carson City | Parks and general public purpose | 1,848 ac. | 20.8% |
| BLM to Carson City | Conservation easement, recreation and natural areas | 3,604 ac. | 40.6% |
| BLM to Carson City | Reversionary interest on existing patent lands released for economic development | 75 ac. | 0.8% |
| Lands for Disposal | Economic Development | 158 ac. | 1.8% |
| Total: | | 8,884 ac. | |
| Net acreage to Carson City ownership: | | 6,462 ac. | 72.7% |

Exhibit Q - LANDS
Document consists of 15 slides.
Entire Exhibit provided.
Meeting Date: 03-18-10

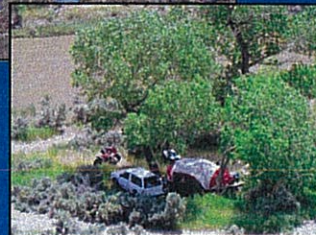


Provides a new park, trail or natural area

- This purchase would provide the first public property in the Carson River Canyon
- The Aquatic Trail Plan/UPMP and the Open Space Master Plan identify acquisition of the Bently property
- Acquisition will provide legal public access for recreational trail users
- Located mid-point between two river access trailheads

Addresses Safety Concerns

- Current concerns:
 - Abandoned cars
 - Camping and related trash
 - Desert dumping
 - Drug trafficking
 - Shooting
- Carson City can provide public resources to address these issues through existing and/or new partnerships





Resource Protection

- Significant site characteristics: environmental, historical, open space
- Urgent action needed to protect all resources
 - OHVs create multiple trails, damage vegetation, and create erosion
 - Historical mining artifacts being destroyed
 - Scenic impact
- Future phases will provide for trail system planning, trailhead development and interpretive signage

- 
- # Resource Protection
- Significant site characteristics: environmental, historical, open space
 - Urgent action needed to protect all resources
 - OHVs create multiple trails, damage vegetation, and create erosion
 - Historical mining artifacts being destroyed
 - Scenic impact
 - Future phases will provide for trail system planning, trailhead development and interpretive signage

Regional or Local Plans

- Carson River Master Plan
- Open Space Master Plan
- Parks and Recreation Master Plan
- Unified Pathways Master Plan / Carson River Aquatic Trail
- Federal Lands Bill

The map displays the Carson River Aquatic Trail route, highlighted in yellow, winding through the Carson River Canyon. Key locations labeled include Carson Valley, Battle Mountain, and Battle Valley. The trail starts near the Carson River and extends towards the north. A legend identifies symbols for points of interest, trails, roads, and other features. A section titled 'RIVER CLASSIFICATION' provides details about the trail's segments and their characteristics. At the bottom, 'FLOW INFORMATION' is provided.

**CARSON RIVER
AQUATIC TRAIL MAP**

LEGEND:

- Point of Interest
- Trail
- Road
- Waterway
- Other
- Private Land
- Federal Land
- State Land
- County Land
- Municipal Land
- Unincorporated Area

RIVER CLASSIFICATION

CLASS I: Recreational waters and/or designated

CLASS II: Multiple-use waters and/or designated as such

CLASS III: Agricultural waters and/or designated as such

Notes: All flows in this study are assumed as local water flows. No groundwater flows are shown or considered. Flows must be accounted for purposes of this study.

Flow Information:

Flow direction is indicated by arrows. Flow magnitude is indicated by the width of the arrow. Flow velocity is indicated by the length of the arrow.

- [illegible]



Phase of a SNPLMA Project

- Critical purchase in a series of acquisitions along the Carson River corridor
- Previous transactions:
 - 4 acquisitions by Carson City
 - 7 acquisitions by BLM (through SNPLMA)
- Not a direct phase of an approved SNPLMA project

Cost and Value of Investment

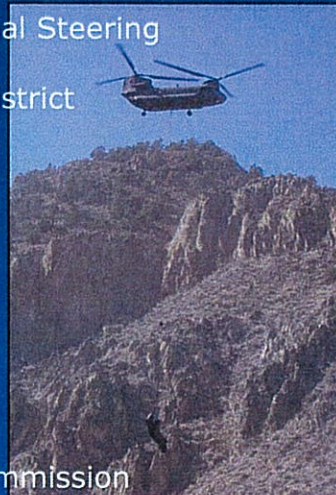
- Appraised Value (2007): \$1,640,500
- SNPLMA request (40%): \$ 656,200
- Carson City match (60%): \$ 984,300
- Other lands within the Carson River corridor have cost \$12,000/acre
- Bently, estimated value \$3,490/acre

Public Demand vs. Investment

- Regional significance with the Nevada Commission on Tourism's strategy for water-based recreation (tourism) in Northern Nevada
- Public ownership will provide for legal public access and recreation use for Carson City and Lyon County residents
- Investment of public funds and ownership guarantees continuation of existing multiple recreation uses

Partnerships and Contributions

- Bureau of Land Management
- Carson River Regional Recreational Steering Committee
- Carson Water Subconservancy District
- Kiwanis
- Lyon County
- Nevada Commission on Tourism
- Nevada Land Conservancy
- Nevada State Lands
- The Nature Conservancy
- The Pinenut Trails Association
- Nevada National Guard
- Virginia and Truckee Railroad Commission



Summary – Project Merits

- 1st acquisition – Carson River Canyon
- Provides for resource protection
- Carson City's vision – Facilitates implementation of multiple master plans by providing connectivity and guarantying existing recreation uses
- Consistent with SNPLMA mission and purpose –
Outstanding Public Investment
- Thank you.
We look forward to seeing
you on the next rafting trip!

