

# *USDA Forest Service Humboldt-Toiyabe National Forest*

## *Spring Mountains National Recreation Area*

### Update on Activities and Planning Efforts in Southern Nevada

**EXHIBIT B-2 – LANDS**  
Document consists of 20 slides.  
Entire Exhibit provided.  
Meeting Date: 01-22-10



# *Natural Recreation Area in an Urban Environment*

- Designated a National Recreation Area in 1993
- Three purposes for the legislation which set the direction for Forest Service management



# *The Purposes Are To ...*

Preserve the  
values  
contributing to  
public enjoyment  
and biological  
diversity



# *Ensure appropriate conservation and management of natural and recreation resources*





*Provide and develop public recreation opportunities for the enjoyment of present and future generations*



# Equal Emphasis on...

**Recreation resources  
and opportunities**



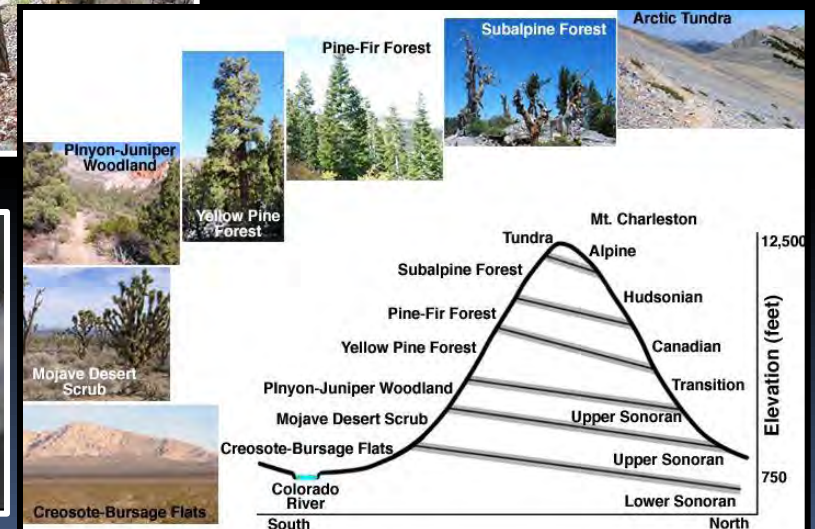
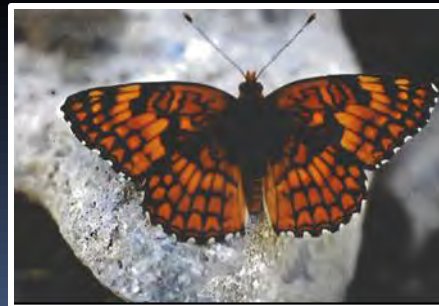
**Natural resources,  
values, and biological  
diversity**



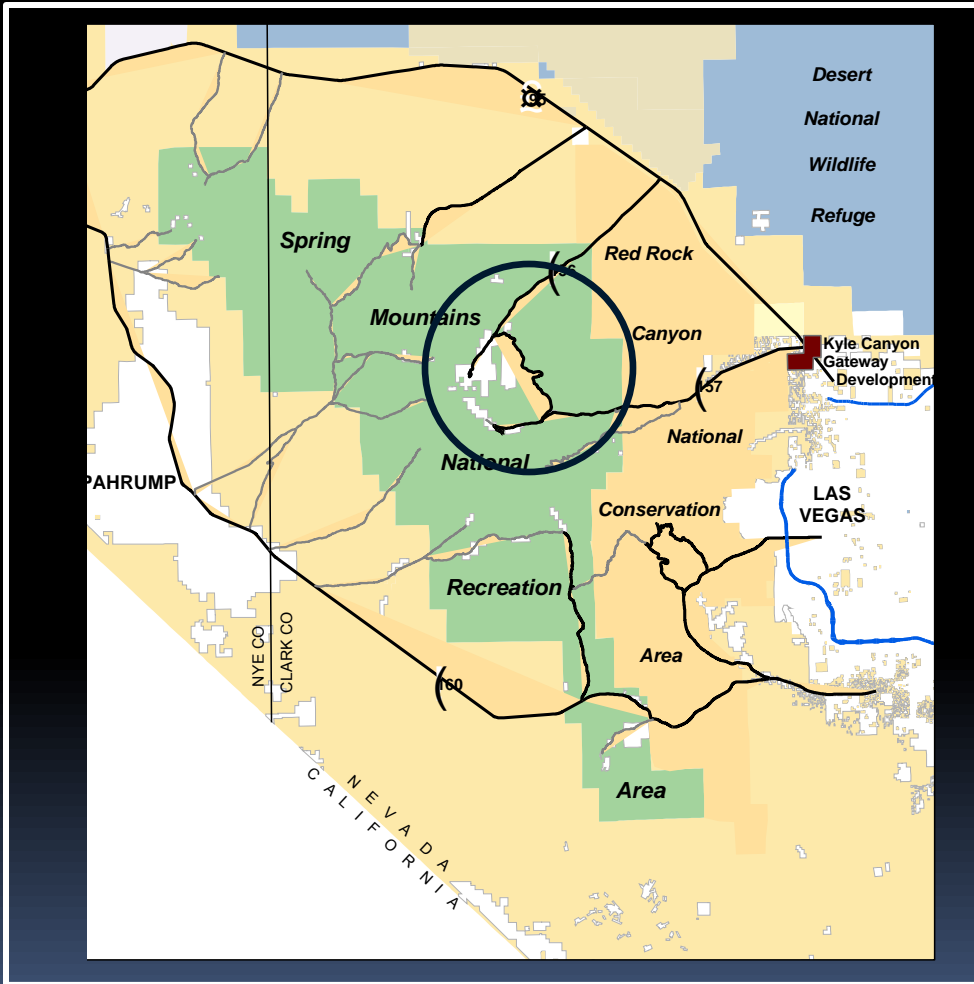


# *Unique Attributes & Special Qualities*

- Sky Island in the Mojave
- 57 Endemic species
- 80 springs
- Elevation 5500 to 1200ft.
- 7 vegetation life zones
- State “big” trees



# *More unique qualities...*



- Just 40 minutes from the Las Vegas Strip
- Nearly 1 million visitors annually
- 90 % of use concentrated to Kyle and Lee Canyon
- Accessed by 2 NV state highways that dead end.



# *Our Visitors...*

- Local & urban
- Seek day time activities
- Unfamiliar with where to go and what to do
- English as a 2<sup>nd</sup> language
- Large family style groups





# *When we do not meet the needs and expectations of the Visitor...*



Litter and trash  
Human Waste  
Illegal Parking  
Traffic Gridlock  
Vandalism

# *Provide Good Facilities and Timely & Accurate Information*

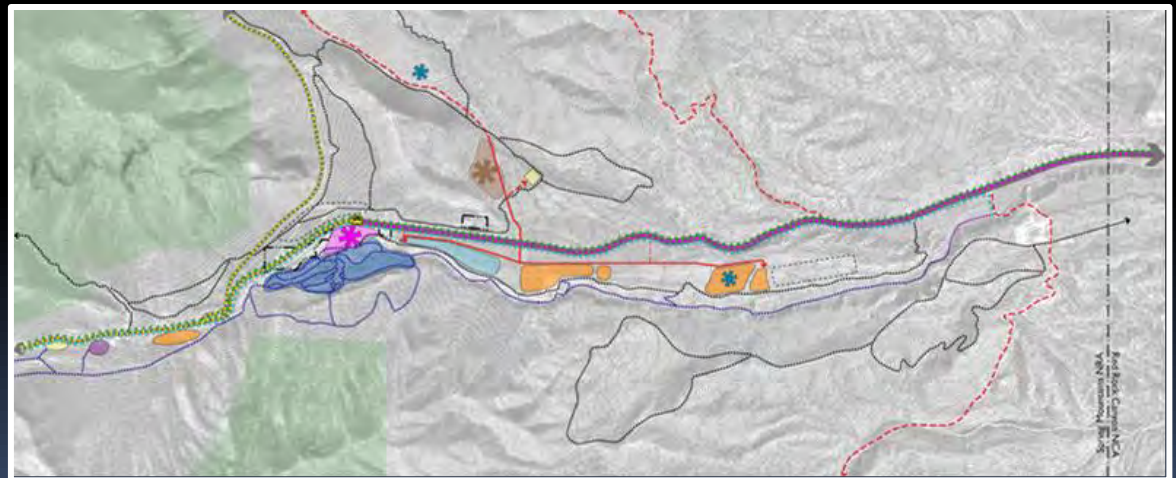


- SNPLMA funding = \$100 million
- Reconstruct all developed sites Kyle, Lee, Deer Creek
- Begin reconstruction summer 2010 on 2 sites
- 2 sites annually until complete



# *Middle Kyle Complex -- New Construction*

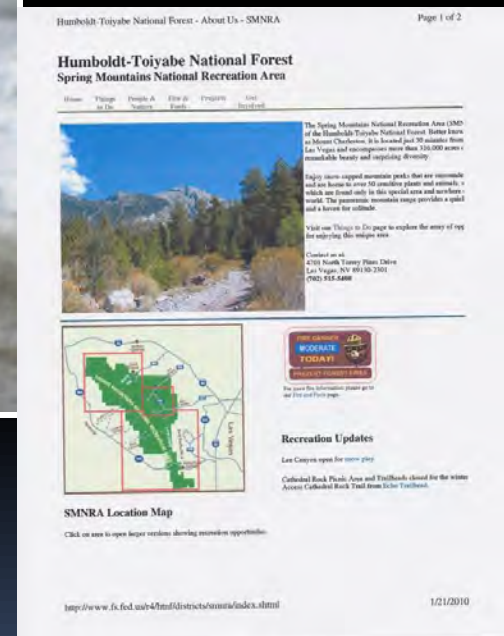
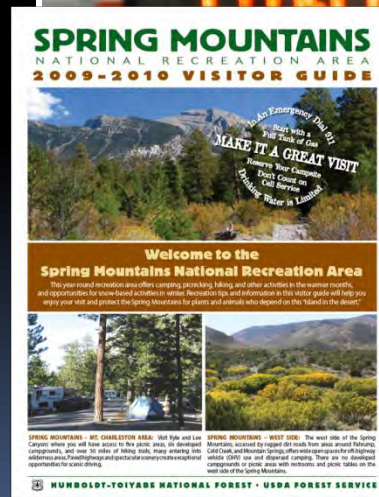
- Visitor Center
- Campgrounds
- Picnic Areas
- Fire and law enforcement facilities
- Trails for hikers, bikers, and equestrians.



# Amenities

Showers  
Electricity  
Flush Toilets  
Group Sites  
Camping Cabins  
Play Areas

Better signs  
Current Information  
Visitor Guides  
Web Site Information





# *Respecting the Land & Resources*



## The Southern Paiute Story



# *Dispersed Camping*

Litter and garbage

Human waste

Illegal campfires

Illegal tree cutting

Soil compaction

Denuding of vegetation



# *Wildland Urban Interface Fuel Treatments*

- Treats fuels on 2500 acres around private lands
- Kyle Canyon summer 2010
- Project completed November 2010





# *Trespassing...*

Between 40 -50 separate cases of trespass



Fences  
Dumping of debris  
Roads & Driveways  
Buildings



Committee on Public Lands

1/22/2010



# *Mt Charleston License Plate Program*



Support the Natural Environment of the Mt Charleston area through projects that improve wildlife habitat, forest conditions, public access, and recreation use.



# *Stewardship Projects Funded by License Plate Grants*

Friends Of Nevada Wilderness



Southern Nevada Conservancy





# *Questions?*

