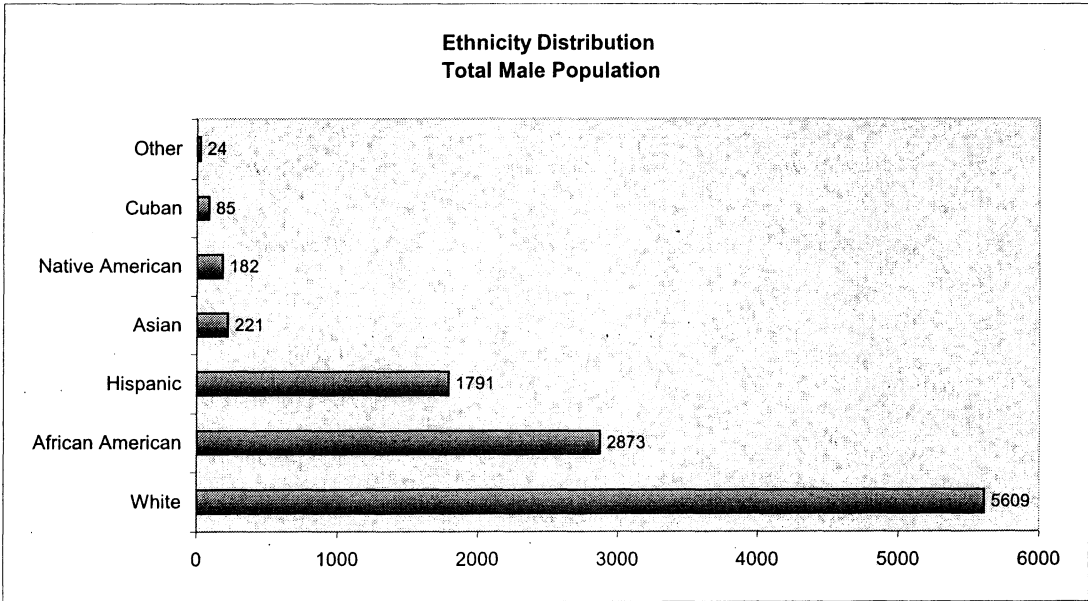
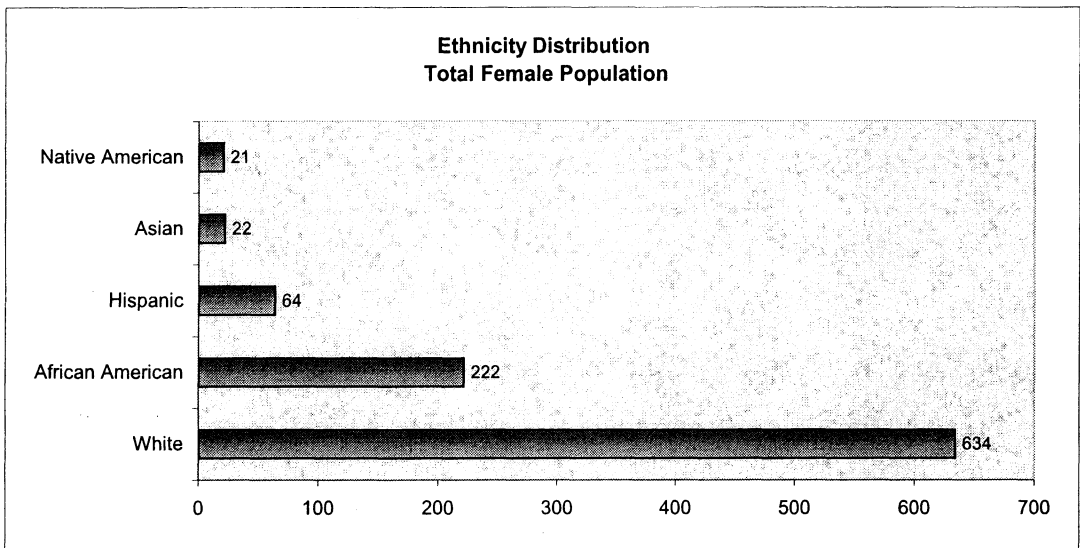


NDOC Statistics

Questions and Comments from Teresa Werner, Public Citizen – 3/17/08

FY 2005	FY 2006	Question/Comment
Black Males–2,873 (26.64%) White Males–5,609 (52.01%)	Black Males–3,115 (26.87%) White Males–5,935 (51.19%)	Nationally, up to 60% more blacks are incarcerated than whites. Why is Nevada nearly the opposite? I would like to think we are less racist than the rest of the nation, but frankly, I don't believe these numbers are accurate.
Women w/kids – 244 (26%) Men w/kids – 2,317 (21%)	Women w/kids – (73%) Men w/kids – (37%)	<ol style="list-style-type: none"> 1. Is it true that the number of convicted women with children rose 47% in just 1 year? 2. I would like to know how these children are being supported with one or both parents in prison. 3. How many children are supported by the state?
Average Length of Prison Confinement in Years: Death – 12.9 Life – 12.12 Life w/parole – 7.61 Others – 3.5	Average Length of Prison Confinement in Years: Death – 14.2 Life – 12.7 Life w/parole – 7.8 Others – 2.2	<ol style="list-style-type: none"> 1. Why does it take 12-14 years to put someone to death? 2. I assume Life means Life w/o parole. Are these people only living 12 years after being convicted? How are they dying? Are we only sentencing old people to life w/o? 3. What is the minimum on a life sentence? 5, 10, 20 years? I know we have MANY inmates who have served well over 10-20 years on life sentences, so who is serving only a few minutes to make the average less than 8 years? I REALLY don't see how those numbers could be accurate.
Parole Violators by Offense Group		Are these statistics based on the original offense or actual violation? I would like to see the statistics on what the actual violations are to see how many are new crimes vs traffic tickets, unable to pay parole dues, or drinking a beer.

7/4 2005

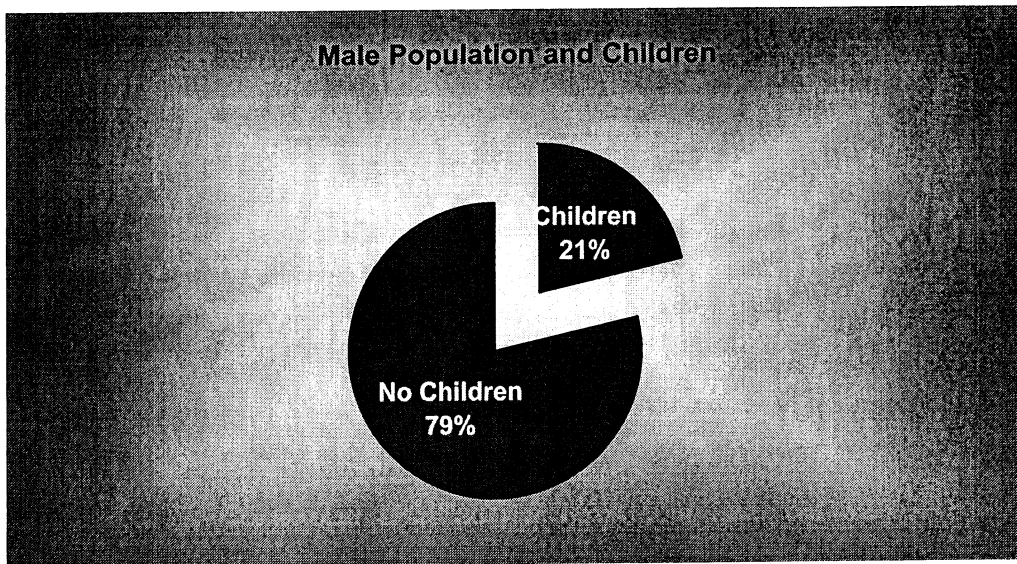
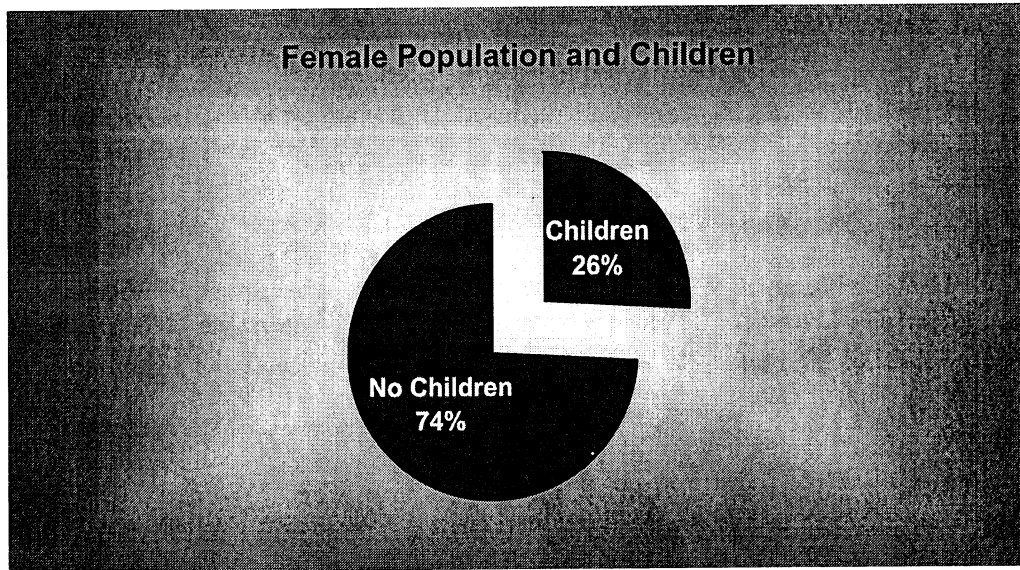


	White	African American	Hispanic	Asian	Native American	Cuban	Other
Females	65.84%	23.05%	6.65%	2.28%	2.18%	0.00%	0.00%
Males	52.01%	26.64%	16.61%	2.05%	1.69%	0.79%	0.22%

NDOC's population is primarily comprised of white males and females. African Americans and Hispanics are the second and third largest ethnicity groups respectively.

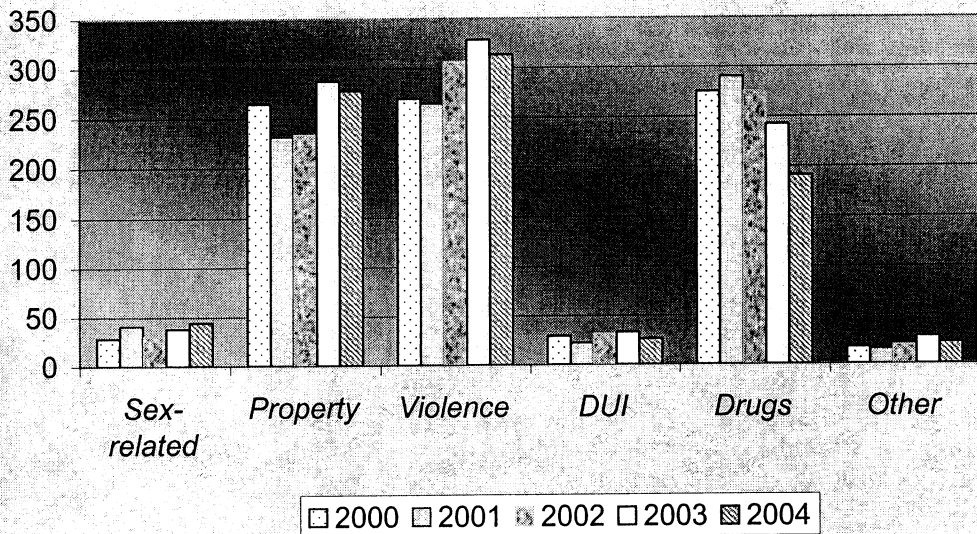
7/4 2005

NDOC INMATE POPULATION AND CHILDREN

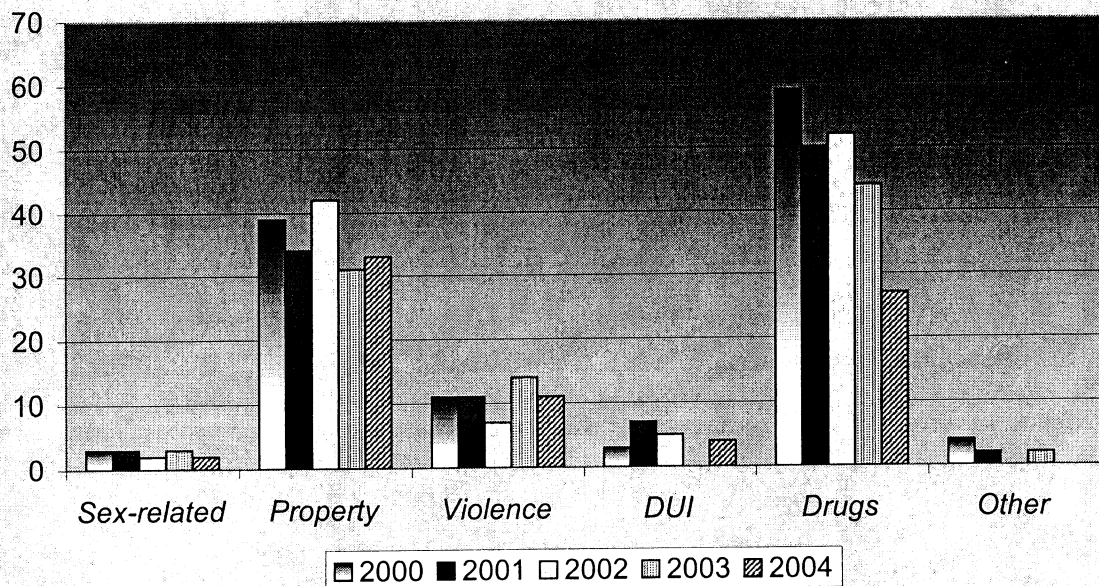


	Female	Male
Children	244	2317
No Children	704	8510
Total	948	10827

Male Parole Violators by Offense Group 2000 - 2004

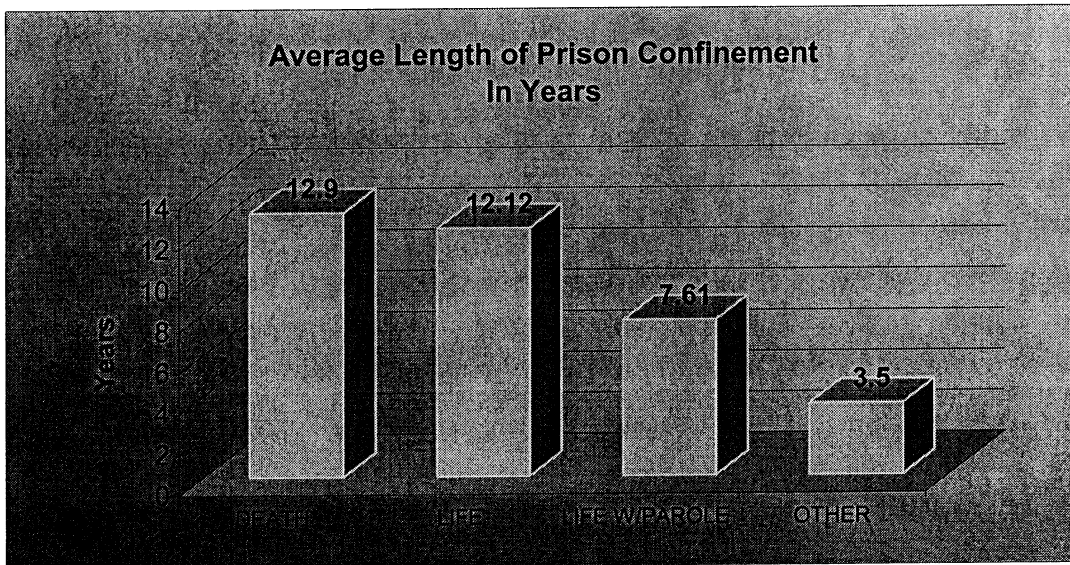
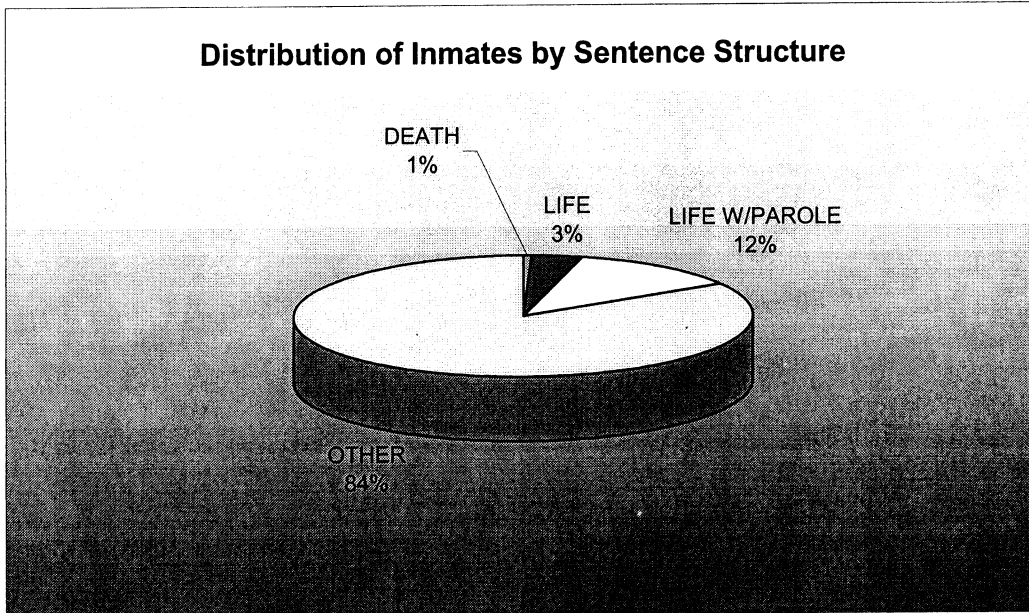


Female Parole Violators by Offense Group 2000 - 2004



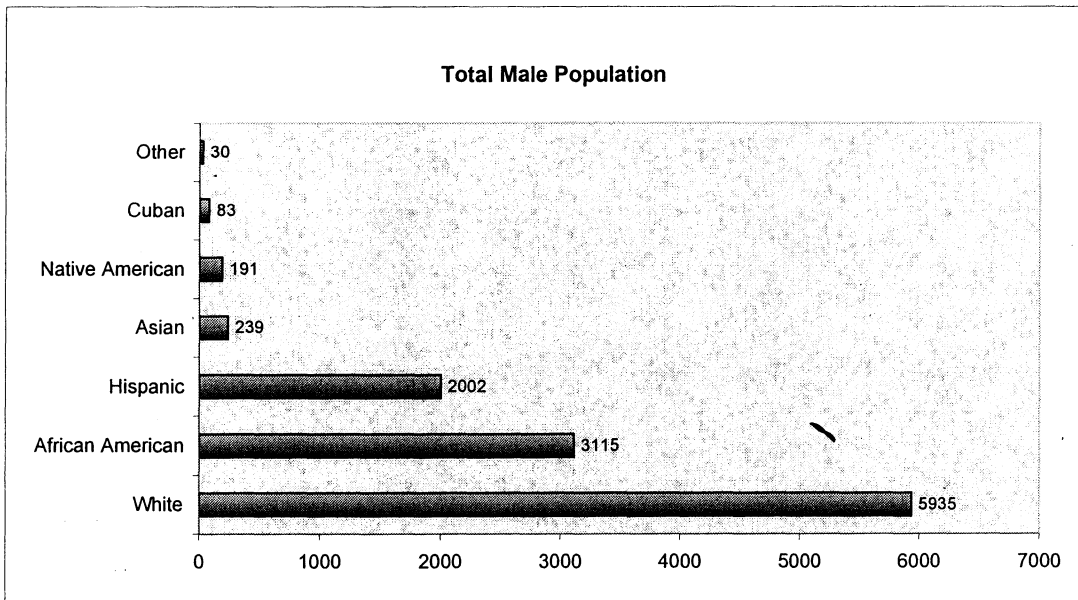
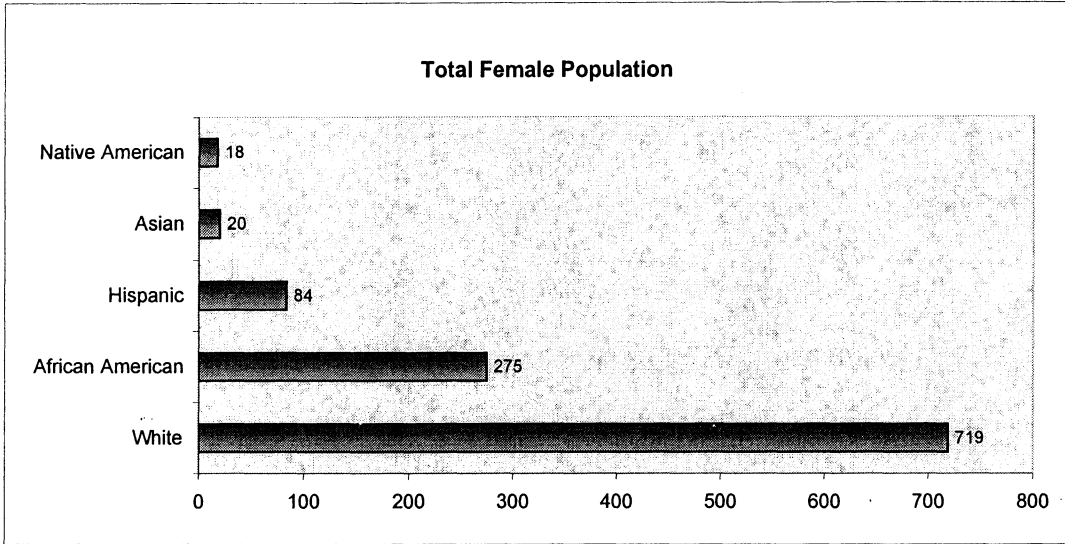
Annual data for the first part of the 2000 decade suggests that the largest proportion of Nevada's male parole violators are violent offenders. However, the offense ranking is different for female parole violators which is mainly represented by drug offenders.

SENTENCE STRUCTURES AND LENGTH OF PRISON INCARCERATION



742006

ETHNICITY DISTRIBUTION OF THE INMATE POPULATION

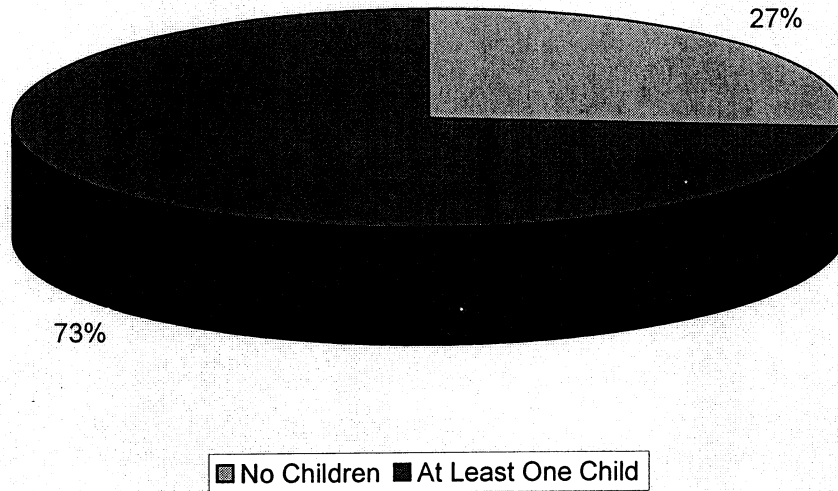


	White	African American	Hispanic	Asian	Native American	Cuban	Other
Females	64.25%	24.58%	7.51%	1.79%	1.61%	0.00%	0.27%
Males	51.19%	26.87%	17.27%	2.06%	1.65%	0.72%	0.26%

NDOC's population is primarily comprised of white males and females. African Americans and Hispanics are the second and third largest ethnicity groups respectively.

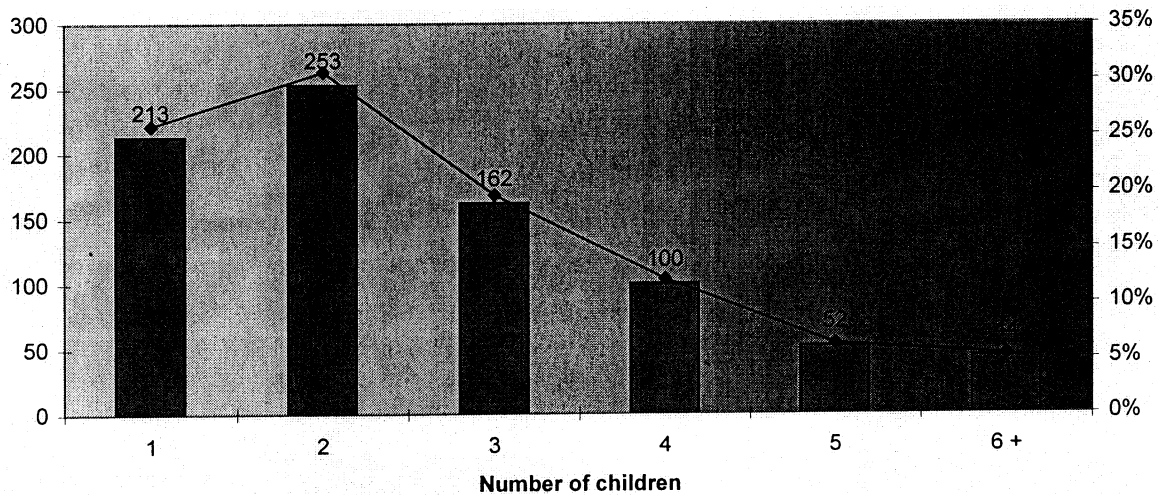
742006

Female Offenders and Children

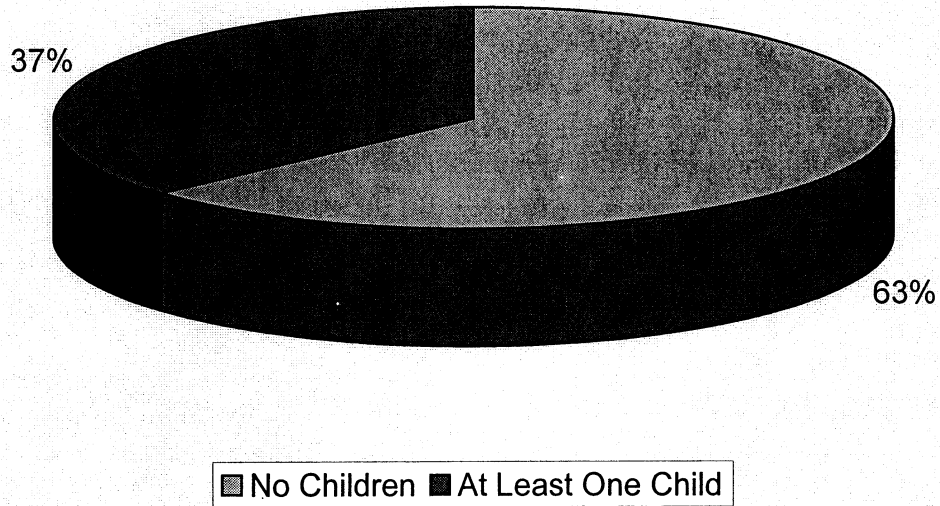


Three-fourths of the female population of offenders have children. In fact, among this group, 76% have up to three children.

Distribution of Female Offenders by Number of Children

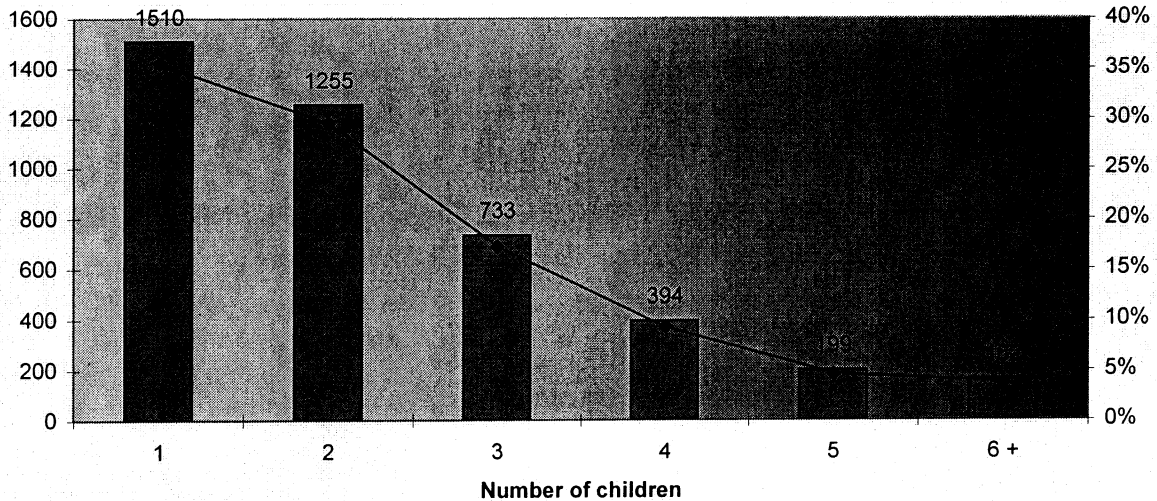


Male Offenders and Children



Approximately one-third of the male population of offenders have children.

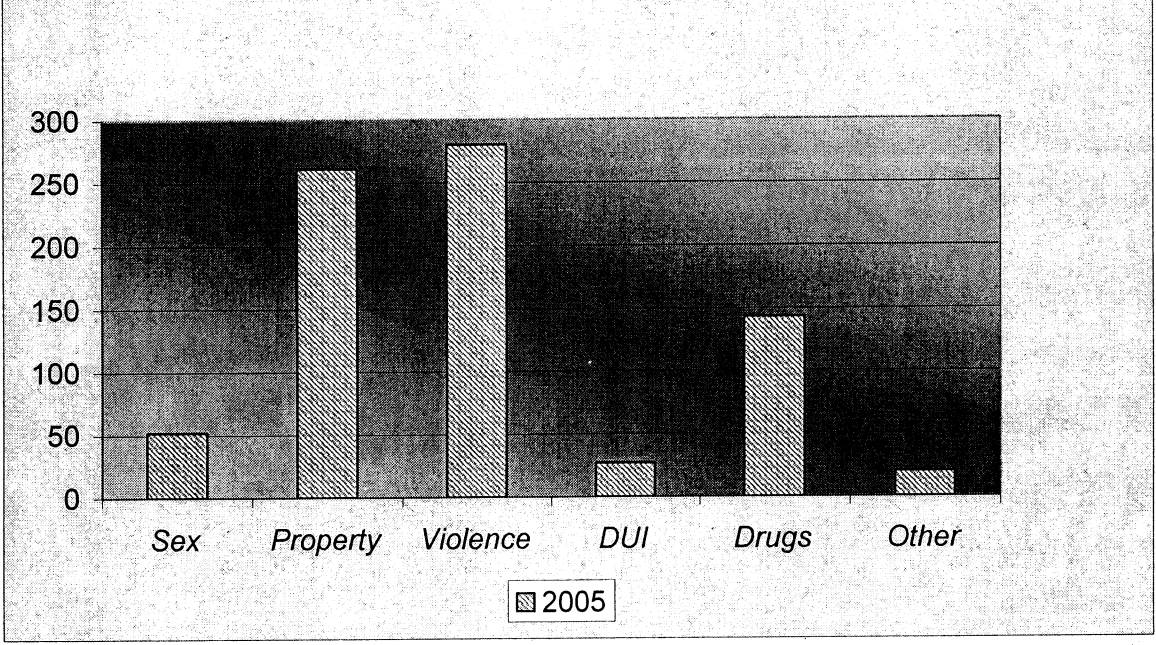
Distribution of Male Offenders by Number of Children



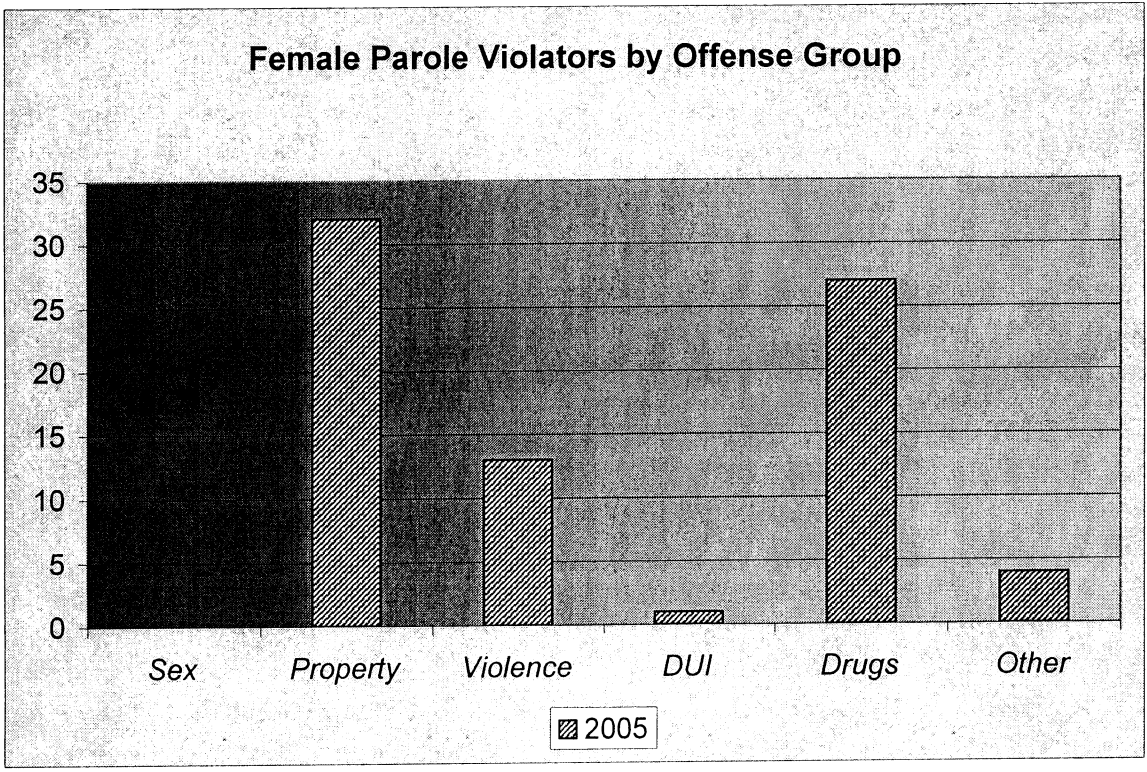
Of those male offenders with children, 35% have one child, 30% have two children, and 35% have three or more children.

FY 2006

Male Parole Violators by Offense Group

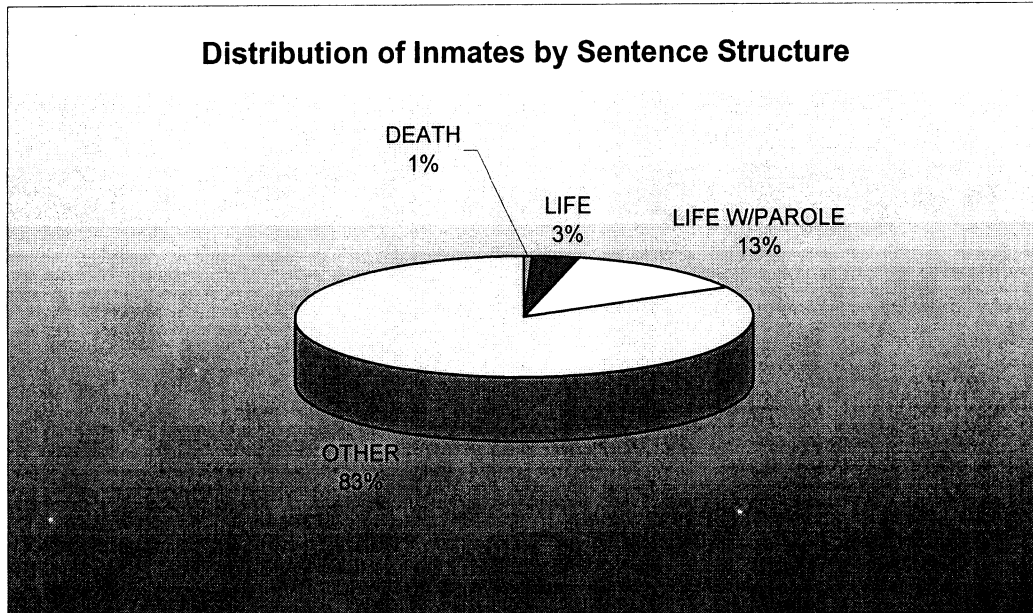


Female Parole Violators by Offense Group



During Calendar Year 2005, the Nevada Department of Corrections admitted 783 male and 77 female parole violators. The largest proportion of male parole violators admitted were violent offenders. However, the offense ranking was different for female parole violators with the largest category being property offenders.

SENTENCE STRUCTURES AND LENGTH OF CURRENT PRISON INCARCERATION



The calculation for "other" sentences excludes long-term sentence structures.

FY2006

10