



What is Parole?

- ☐ Parole is the conditional release from prison.
- ☐ The Court determines the initial parole eligibility.
- ☐ Parole is not a right.

What is the Parole Board?

- ☐ Independent body.
- ☐ Carefully plans a safe return to the community.
- ☐ Returns offenders to prison whenever community safety is threatened.

Parole Supervision

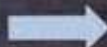
- ☐ Careful control and supervision of offenders.
- ☐ Monitoring of the offender's home, job, activities and associates.
- ☐ Drug testing & treatment, electronic monitoring, no contact with victims, requirement to pay restitution.
- ☐ Supervised by officers of the Division of Parole and Probation.

Parole & the Judicial System

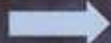
- ❑ Legal framework that empowers judges, prison officials and parole boards.
- ❑ A flexible system for punishing offenders and protecting the public.

Parole Board within Nevada's Criminal Justice System

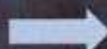
Court sentences offender to prison and establishes the minimum sentence for parole eligibility.



The Department of Corrections notifies the Board when inmates are eligible for consideration.



The Parole Board considers offenders for release, then grants or denies parole.



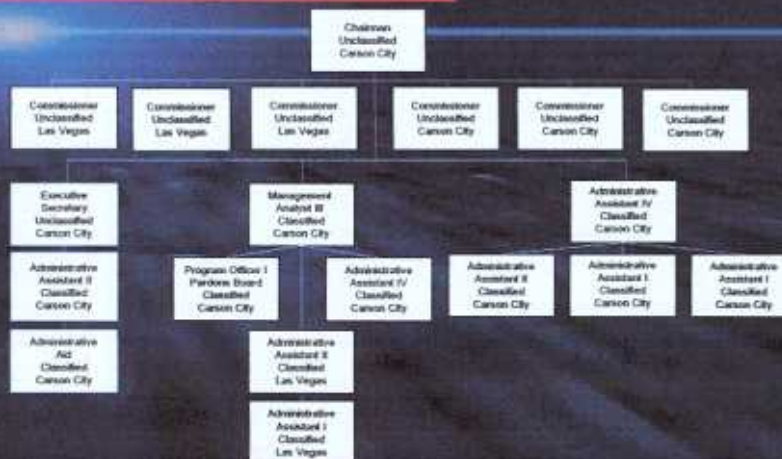
If parole is granted, the Division of Parole and Probation (P&P) supervises the parolee.

The Nevada Parole Board

■ Six members and one chairman appointed by the Governor.

- Dorla M. Salling, Chairman
- Thomas D. Goodson, Member
- Eddie Gray, Member
- Maurice Silva, Member
- Mary Vieth, Member
- Michael Keeler, Member
- Connie S. Bisbee, Member

Parole Board Organizational Chart



The Nevada Parole Board

FY 2006

- ❑ Made 8,427 decisions.
- ❑ Each case requires four votes.
- ❑ Over 33,000 votes cast.
- ❑ Each member considered over 4,800 cases.

Parole Hearing Calendar

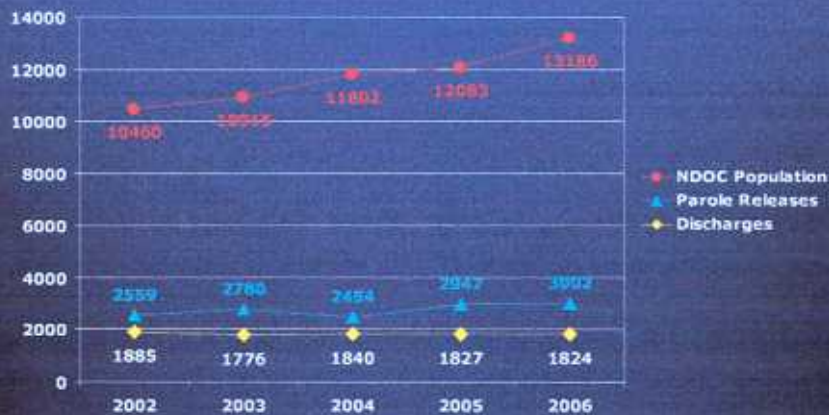
Monday	Tuesday	Wednesday	Thursday	Friday
July 2006				
3 Office day	4 Holiday	5 NNCC (9) PV's	6 HDSP (9) PV's	7 HDSP (24) vc ESP (33) vc
10 CCC (ia/11) HCC (ia/11) WSCC (ia/20)	11 ECC (ia/9) PCC (ia/16) WSCC (ia/20)	12 WCC (ia/14) SCC (ia/10) SNWCC (16)	13 HDSP (12) PV's	14 NNRC (ia/10) TCC (ia/13) JCC (ia/23)
17 LCC (24) vc HDSP (24) vc	18 HDSP (24) vc NSP (29)	19 NNCC (15) PV's HDSP (24)	20 SNWCC (6) PV's	21 LCC (25) vc
24 NNCC (24) SDCC (20)	25 HDSP (24) vc SDCC (20)	26 SNWCC (24) vc SDCC (30)	27 HDSP (13) PV's NNCC (18)	28 SDCC (19) House Arrest (ia/11) SSCC (ia/12)

Caseload History



The difference between the number of favorable decisions and the number released from prison is the result of paroles granted to consecutive sentences, and inmates who were subsequently denied due to disciplinary or other reasons.

Comparison of Releases from Prison Parole vs. Discharge



Changes in the types of offenders considered FY02 - FY06

FY02-06 Change	Discretionary and Mandatory Parole Considerations						
	Sex	Violent	Drug	Property	DUI	Other	Total
Considered FY02	508	1700	1500	1791	487	243	6229
Considered FY06	567	2067	1414	2782	405	382	7617
Change	12%	22%	-6%	55%	-17%	57%	22%

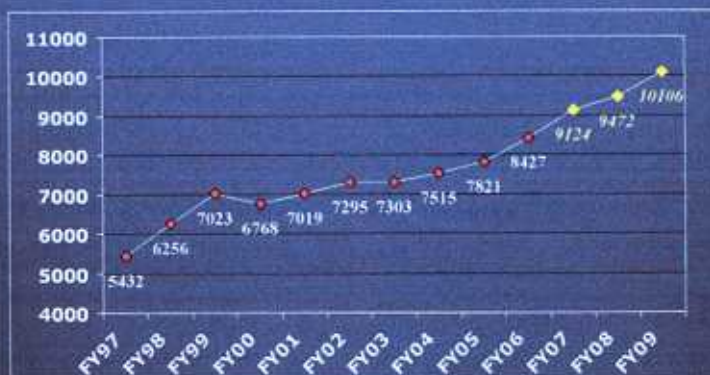
Changes in the types of offenders considered FY05 - FY06

FY05-06 Change	Discretionary and Mandatory Parole Considerations						
	Sex	Violent	Drug	Property	DUI	Other	Total
Considered FY05	527	2045	1374	2286	446	322	7000
Considered FY06	567	2067	1414	2782	405	382	7617
Change	8%	1%	3%	22%	-9%	19%	9%

Parole Board Caseload FY05 - FY09

Fiscal Year	2005 Actuals	2006 Actuals	2007 Projected	2008 Projected	2009 Projected
Discretionary Parole	5431	5713	5147	6401	6671
Discretionary Granted	2449	2397	2609	2709	2807
Mandatory Parole	1869	1904	1956	2020	2346
Mandatory Granted	984	1309	1313	1363	1633
Parole Decisions	7000	7617	8103	8421	9017
Parole Grants	3433	3706	3922	4072	4440
Percent Granted	49%	49%	48%	48%	49%
Violation Hearings	821	810	886	1051	1089
Parolees Revoked	627	632	672	751	779

Caseload FY97-FY09 (projected)



Board Accomplishments

Received Technical Assistance from the
National Institute of Corrections:

- ☐ Parole Board Orientation and Continuing Education.
- ☐ Study on Intermediate Sanctions for Parole Violators.
- ☐ Currently developing a validated revocation instrument.
- ☐ Currently revising Parole Guidelines

Major Issues

- ☐ Applicability of AB510 to Parole Hearings.
- ☐ Increasing Caseload.
- ☐ Changes in Parole Board Actions.

Effects of AB510

- ❑ Changes in Parole Eligibility
- ❑ Increase in number of inmates requiring appearance before the Board
- ❑ Scheduling of increased hearing dates.
- ❑ Determine how to review cases out of state and at institutions without video conference capabilities.

Effects of AB510

- ❑ Re-design of Board guidelines to reflect changes in minimum & maximum sentencing range with offender and offense characteristics.
- ❑ Some offenders will become eligible before the guideline's earliest recommended time to serve.
- ❑ AB510 allows for greater earned credits to reduce maximum sentences causing many repeat or violent offenders to expire or become eligible for MPR prior to serving a recommended guideline range.



Thank You!