



State of Nevada

Department of Conservation & Natural Resources

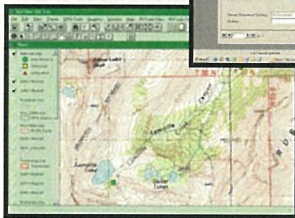
Natural Heritage Program



901 South Stewart St., Suite 5002 · Carson City, Nevada 89701-5244, U.S.A. · tel: (775) 684-2900 · fax: (775) 684-2909 · <http://heritage.nv.gov>

The Nevada Natural Heritage Program:

Serves as a clearinghouse for current information on sensitive species and sets priorities for conservation efforts based on their rarity, vulnerability, and management needs in an effort to minimize resource conflicts, regulatory listing, and costly recovery measures.



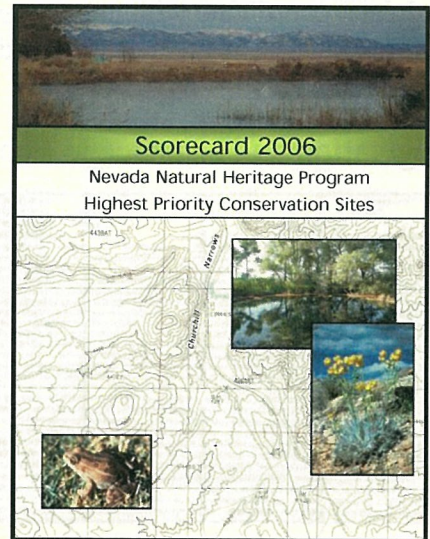
Native Flora and Fauna

Nevada Natural Heritage maintains the most complete and comprehensive databases about native flora and fauna in the state. Publications such as the Sensitive Plant and Animal list, Plant and Animal Watch list, and Nevada Rare Plant Atlas, created using the Heritage State ranking system, are available to the public and can be accessed on our website. Other lists are available including: The Federally Endangered and Threatened Species of Nevada; County Rare Species lists; Endemic Species of Nevada; State Protected Plants; Nevada Losses; and a detailed listing of Nevada's Rare Plants and Lichens.

Scorecard

Natural Heritage produces a published list (Scorecard) of highest priority conservation sites in Nevada. The process involves an extensive review and synthesis of the accumulated information from databases, files, and experts, to compile a list of the highest-priority conservation sites for sensitive species within the state.

Highest-priority sites require new management and/or protection actions to successfully conserve a significant assemblage of sensitive species, and to prevent the loss of one or more species or populations at that site during the next 1-2 years. The Scorecard serves as an essential tool for land use planners and managers. It is available as a hard copy document at our office and on our website.



Palmer's Chipmunk

Cris Tomlinson - NDOW

Data Services

Natural Heritage provides the public with information on the locations, biology, and conservation status of sensitive species in a variety of database formats (including Geographic Information Systems) for sites ranging from local parcels to the entire state. Frequent users include consultants, industry, resource management agencies, conservation organizations, and scientists engaged in planning, development, conservation, scientific research or other projects. Fees are charged to cover the costs of gathering, maintaining, and formatting information and vary with the complexity of each request.

EXHIBIT N-3 - LANDS
Document consists of 2 pages.
Entire Exhibit Provided
Meeting Date: 07-14-08

Nevada Natural Heritage Program



Crystal Springs Site

Eric Miskow - NNHP

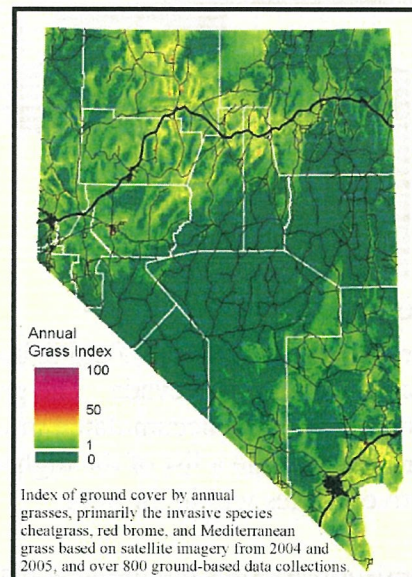
Wetlands

Most of the 69 Scorecard sites (see Scorecard, above) harbor populations of wetland dependent animals and plants. A majority, in fact, entail spring systems. To learn more about isolated wetlands habitats and the conservation status of imperiled taxa occurring there, the NNHP will start a multi-year information gathering and conservation assessment effort in 2007. The project entails the survey of 200 springs, preparation of a habitat conservation plan, and initiation of the Nevada Wetlands Information System, in partnership with the Desert Research Institute and The Nature Conservancy. The data will be

maintained by NNHP and will be accessible to the public in the future. The project is co-funded by the U.S. Environmental Protection Agency and State of Nevada Q1 Program.

Noxious and Invasive Weeds

The NNHP databases are also ideal for mapping and tracking populations of undesirable species, and a diverse coalition of State and Federal agencies recently provided two years of funding to NNHP to update and maintain the state-wide noxious weed databases and map for Nevada. A weed mapping specialist will compile, analyze, enter, and update noxious weed data, coordinate with numerous other agencies and individuals gathering such data, and accept and disseminate noxious weeds data via our web site.



Vegetation and Landscape Ecology



East slope of Ruby Mountains Eric Peterson- NNHP

This subdivision of the Heritage Program brings together the best available knowledge of vegetation in Nevada to provide a broad understanding of the types, conditions, and biogeography of plant communities across our landscape. By using knowledge of vegetation and the surrounding landscape, decision-makers are better prepared to balance issues involving rare species, ecological changes, wildfire, and human land-use. The developing National Vegetation Classification for Nevada and a catalog of GIS coverages are among the products

available on the website. When completed, a compilation of vegetation maps and classification will serve as a 'living document' with updates expected every other year and will be available on the website.

Look to our website to find more information and products prepared by the Nevada Natural Heritage Program.

- Images of plants and animals
- Links to related websites
- Nevada Wildflower Reports
- GIS data and software
- Great Basin Precipitation Watch
- Recommended Reading
- Species status reports
- Species maps
- Link to NatureServe

For more information on the Nevada Natural Heritage Program and related services please visit our website at <http://heritage.nv.gov> or call (775) 684-2900.

Nevada Natural Heritage is a proud member of the [NatureServe](http://www.natureserve.org) network, please visit their website at www.natureserve.org.