

ALLEN BIAGGI
Director
Department of Conservation
and Natural Resources

PAMELA B. WILCOX
Administrator

JIM GIBBONS
Governor



Nevada Tahoe Resource Team

Address Reply to

Division of State Lands
901 S. Stewart St. Suite 5003
Carson City, Nevada 89701-5246
Phone (775) 684-2720
Fax (775) 684-2721
Web www.lands.nv.gov

STATE OF NEVADA
DEPARTMENT OF CONSERVATION AND NATURAL RESOURCES

Division of State Lands

Informational Sheet
Lake Tahoe Environmental Program
Legislative Committee on Public Lands
June 6, 2008

HISTORY

- ❖ Nevada has a long history of commitment to Lake Tahoe, including management of the bed & Bank of the lake as sovereign land, management of Lake Tahoe Nevada State Park, and implementation of the 1986 Tahoe Basin Act. The 1986 act was administered by the Division of State Lands and included funds for erosion control grants and the acquisition of sensitive lands. The agency acquired approximately 500 environmentally sensitive parcels, commonly referred to as urban lots, with the acquisition funds. State Lands has a continuing obligation to manage those lots for hazard trees, fuels reduction and erosion control.
- ❖ In the mid 1990's, scientists and researchers provided testimony that a significant increase in environmental restoration efforts needed to occur immediately or else the lake would shortly reach a point where its renown clarity could never recover.
- ❖ In response, the presidential summit was held in 1997, which consisted of a series of meetings primarily in the focus areas of water quality, air quality and forest health. This event was attended by President Clinton, Vice President Gore and a number of Cabinet members.
- ❖ An outcome of the summit was the Lake Tahoe Environmental Improvement Program (EIP) which, in part, provided a list of restoration projects needed to slow the decline in lake clarity, improve water and air quality, and improve watershed conditions such as forest health, wildlife habitat and fisheries.
- ❖ The cost of implementing the first phase of the EIP was estimated at \$908 million, and allocated among five major stakeholder groups: 1) federal government, 2) State of Nevada; 3) State of California; 4) local government; and 5) private sector. Nevada's share was \$82 million.

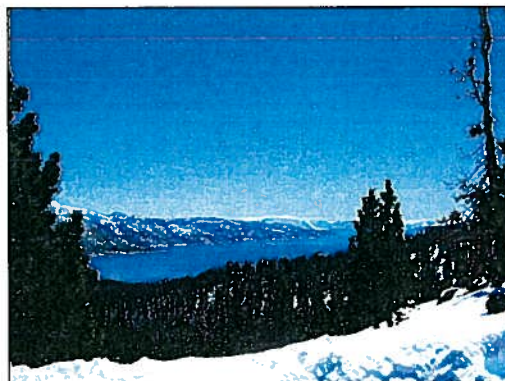


EXHIBIT E-2 - LANDS
Document consists of 8 pages.
Entire Exhibit Provided
Meeting Date: 06-06-08

- ❖ In 1999, with support from the Governor's Office, the Legislature passed AB 285 which fully authorized and committed Nevada's \$82 million share of the EIP. The legislation established the Fund to Protect Lake Tahoe to be administered by the Division of State Lands for the purposes of implementing the EIP. The legislation required State Lands to come before the Legislature each biennium with a funding request for projects to be worked on in the upcoming biennium until the \$82 million commitment was fulfilled. State Lands has done so each session, coordinating our request with the budget office.
- ❖ This past session, the Legislature approved the issuance of bonds for the final installment of the state's \$82 million commitment with the passage of Senate Bill 55 – Chapter 504 Statutes of Nevada 2007. Nearly all of the \$82 million was provided through the sale of general obligation bonds.
- ❖ The Nevada Tahoe Resource Team (NTRT) was put together in 2000 to carry out the EIP. The nine member team is led by the State Land's Tahoe Coordinator position and consists of representatives from State Lands, State Parks, Forestry, and Wildlife. The team make up includes an environmental scientist, two full time foresters, one seasonal forester, a wildlife specialist, a recreation specialist, a land agent, an administrative assistant, and the coordinator. Nearly all of the positions are non-general fund and are funded through the interest generated from Tahoe bond sales.
- ❖ A strength of the team is that they are all in one location and can bring an inter-disciplinary approach to the projects ensuring the highest environmental benefit for each project. The team also coordinates with the Department of Transportation, the Division of Environmental Protection, and other state agencies with jurisdiction in the Tahoe basin. The team is often considered to be a model for how to get things done in the Lake Tahoe basin.



* NDF Conservation Crew treating an urban lot

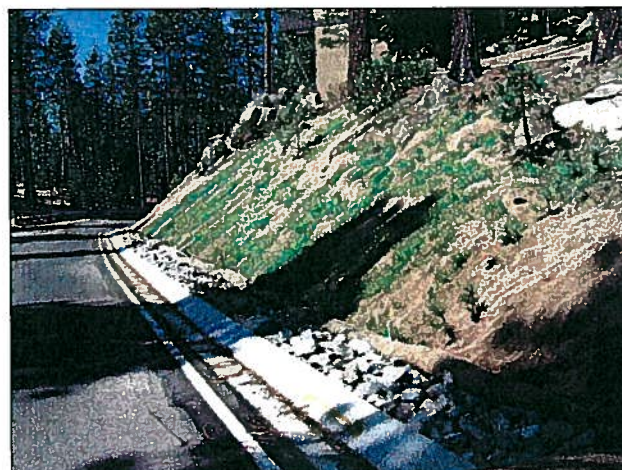


* Burn Pile Disposal

PRESENT

- ❖ The first phase of the EIP was generally viewed as a ten year time frame, 1997-2007. Nevada has fulfilled its funding commitment, and California and the federal government are reporting that they are exceeding their commitment. We anticipate that Nevada's phase I projects will be completed around 2010.
- ❖ The State of Nevada and its local jurisdictions are responsible for 124 projects identified within the EIP. To date 65 projects have been completed; 37 are either in construction or planning and design; and 22 to be initiated sometime in the future. A list of completed projects and those under construction or design is attached for your review.
- ❖ The recent Angora fire has highlighted the need for more work in the area of forest health and fuels reduction.
- ❖ The general feeling in the basin is that EIP phase I has been successful in slowing the decline of lake clarity and setting the foundation for reversing the declining clarity trend.
- ❖ The Tahoe Regional Planning Agency (TRPA) is in the process of updating their regional plan. At the same time, the California Lahontan Regional Water Quality Control Board (Lahontan), in coordination with NDEP, is establishing total maximum daily loads (TMDL's) for the watersheds in the basin. The TMDL's are expected to be completed late 2008 or early 2009.
- ❖ The TMDL and regional plan will most likely establish a clarity challenge of improving the lake's water transparency by 20 feet in depth by 2027 as a necessary interim target of achieving the clarity threshold.

Lake Village Water Quality & Erosion Control Project – completed 2007



FUTURE – EIP PHASE II

- ❖ An updated Environmental Improvement Program (EIP II) will be part of the strategy to assist with the achievement of the new Regional Plan for the Tahoe Basin which is currently under development and scheduled for adoption in 2008 or 2009. The cost for implementing EIP II is preliminary estimated at about \$2.2 billion.
- ❖ Program managers, in conjunction with the Nevada Tahoe Resource Team, conservatively estimate that this next phase of the EIP will require a sustained Nevada investment of approximately \$100 million for the five programmatic focus areas. This does not include dollars for research and monitoring.
- ❖ Programs will continue to focus on:
 - The protection & enhancement of the quality of air & water;
 - The protection & restoration of natural watercourses, wetlands, wildlife habitat, fisheries, vegetation and forests with appropriate treatments to reduce the risk of catastrophic wildfires on State owned urban parcels and within the Lake Tahoe Nevada State Park system;
 - Prevention & control of erosion with a focus on reducing fine sediment loading to the Lake from State and County roads; and
 - Enhancement of recreational & tourism opportunities through capital improvements to the State Park infrastructure for both recreation and water quality purposes.

Pile Burning in upper portions of the Tunnel Creek drainage



Snowshoe Hare detection – first detection in the Basin since 1941



Environmental Improvement Program –Summary Project List

Projects Completed

1	Water Quality	Incline Village Tourist/Fairway Phase II
2	Water Quality	Fairview/Country Club
3	Water Quality	Fairway Phase I
4	Water Quality	Fairway Phase III/Country Club
5	Water Quality	Lower Kingsbury Phase I
6	Water Quality	Lower Kingsbury Phase II
7	Water Quality	Upper Kingsbury South
8	Water Quality	Upper Kingsbury North
9	Water Quality	Lakeshore Drive Mill Creek Subdivision
10	Water Quality	Incline Village Commercial
11	Water Quality	Incline Village #4, Ponderosa
12	Water Quality	Roundhill Phase I
13	Water Quality	Mill Creek Subdivision Phase II
14	Water Quality	Incline Village Unit # 1
15	Water Quality	Logan Creek
16	Water Quality	Lincoln
17	Water Quality	Lakeridge
18	Water Quality	Lake Village I
19	Water Quality	Cave Rock Erosion Control
20	Water Quality	Zephyr Cove
21	Water Quality	Marla Bay
22	Water Quality	Skyland
23	Water Quality	Kahle Drive/Oliver Park
24	Water Quality	Roundhill Navajo Drive
25	Water Quality	Ski Way Basin
25		Local Jurisdictions Subtotal
1	Water Quality	Hidden Beach Rehabilitation Cat 17
2	Water Quality	North Canyon Erosion Control
3	Water Quality	Spooner Lake Parking Area
4	Water Quality	Spooner Park Veg. Protection
5	Water Quality	Sand Harbor Erosion Control Wall
6	Water Quality	Sand Harbor Parking Lot
6		State Parks Subtotal
31		Water Quality Total
1	NDOT	Incline Village Erosion Control 1995/1996
2	NDOT	SR28 - Memorial Point to Lakeshore
3	NDOT	Kingsbury Commercial
4	NDOT	SR 28 - Hwy 50 to .8 MN of DO/CC Line
5	NDOT	Stateline Stormwater
6	NDOT	US50 - Zephyr Cove to Skyland
7	NDOT	SR28 - .8 MN of DO/CC to CC/WA and 2.5 MN of CC/WA line to Memorial Point
8	NDOT	Spooner to Glenbrook
9	NDOT	Elks Point Road

10	NDOT	Cave Rock Binwall (10) Project -
11	NDOT	US50 - Bourne Meadow to Zephyr Cove (4-5)
12	NDOT	US50 - Kahle to Elks Point Road
13	NDOT	US50 - Bourne to Skyland (2&3)
14	NDOT	SR 28 Incline Village
14		NDOT Subtotal
1	Soils	Incline Creek - Lakeshoe to Incline Way
2	Soils	Rosewood Creek - Lakeshore to SR 28
3	Soils	Edgewood Creek Assessment
4	Soils	Land C. R. Burke Creek - Chimmney Road
5	Soils	Land Coverage Restoration- Incline Lakes
6	Soils	Land Coverage Restoration- Burgundy Hills
7	Soils	Land Coverage Restoration- Bourne Parcels
8	Soils	Mill Creek Flow Restoration
9	Soils	Roundhill Phase II
10	Soils	Roundhill Phase III
10		Soils Subtotal
1	Fisheries	Water Diversion Survey Cat 23
2	Fisheries	NDOT Third Creek Passage at SR 28
3	Fisheries	Third Creek Passage/Habitat Golf Course
3		Fisheries Subtotal
1	Recreation	North Canyon Trail Cat 11
2	Recreation	Sand Harbor to Memorial Pt. Trail Cat 16
3	Recreation	Spooner Lake Parking Area
4	Recreation	Spooner Summit Trailhead
5	Recreation	NDOT Memorial Point Overlook
5		Recreation Subtotal
1	Wildlife	Upland Wildlife Habitat Enhancement I
1		Wildlife Subtotal
1	Scenic	NDOT SR 28 North Stateline
65		TOTAL

Igniting burn pile above Spooner Meadow



Consumed burn pile above Spooner Meadow



Projects Under Construction or Planning & Design

1	Water Quality	Lake Village II
2	Water Quality	Hidden Woods HOA
3	Water Quality	Crystal Bay Phase I
3		Local Jurisdictions Subtotal
1	Water Quality	Parks Sewer Line Removal Cat 31
2	Water Quality	Sand Harbor Erosion Control Cat 12
3	Water Quality	Sandy Point Restoration
3		State Parks Subtotal
6		Water Quality total
1	NDOT	US 50 - Skyland to Cave Rock (7-9)
2	NDOT	US 50 - Elks Point Road to Bourne (1)
3	NDOT	US 50 - 7 miles north of stateline to 11 miles north of stateline Cave Rock to Glenbrook
4	NDOT	Kingsbury Grade
5	NDOT	SR 28 Crystal Bay to North Stateline
6	NDOT	NDOT N. Stateline Stormwater (Placer)
6		NDOT Subtotal
1	Soils	Edgewood Creek Phase I
2	Soils	Edgewood Creek Phase II
3	Soils	Edgewood Creek Phase III
4	Soils	Third Creek - Lower
5	Soils	North Canyon Creek - Spooner Meadow
6	Soils	Rosewood Creek Middle Portion
6		Soils Subtotal
1	Fisheries	Burke Creek Passage at US 50
2	Fisheries	Third Creek Passage at Incline Way
3	Fisheries	Third Creek Passage at Lakeshore

4	Fisheries	Incline Creek Passage at SR 28
5	Fisheries	Incline Creek Passage at Incline Way
6	Fisheries	Incline Creek Passage at Lakeshore
7	Fisheries	Edgewood Creek Phase I
8	Fisheries	Edgewood Creek Phase II
9	Fisheries	Edgewood Creek Phase III
		Grant Sponsored
9		Fisheries Subtotal
1	Recreation	Sand Harbor Visitor Center Cat 10
2	Recreation	Van Sickle Phase I _ Master Plan Cat 19
2		Recreation Subtotal
1	Wildlife	North Canyon Old Growth Cat 14
2	Wildlife	Sugar Pine Habitat Enhancement Cat 18
3	Wildlife	East Shore Furbearer Survey Cat 24
4	Wildlife	Riparian Wildlife Habitat Enhance. Cat 22
4		Wildlife Subtotal
1	Vegetation	Forest Restoration Phase I Cat 15
2	Vegetation	Forest Restoration Phase II Cat 20
		Forest Health Subtotal
1	Vegetation	Urban Lot Management
2	Vegetation	TYC Conservation Strategy
4		Vegetation Subtotal
37		TOTAL

Hidden Woods Water Quality and Erosion Control Project

