

Nevada Legislative Committee on Public Lands

Big Bend Water District Laughlin Water Reclamation Facility

May 7, 2008



*The "Clean
Water Team"*

**Clark County
Water Reclamation**
DISTRICT

EXHIBIT E - LANDS
Document consists of 9 slides.
Entire Exhibit Provided
Meeting Date: 05-07-08

Big Bend Water District

- 318 District owned by Clark County
- Potable water service for Laughlin
- Governed by Board of County Commissioners
- Member of the Southern Nevada Water Authority (SNWA)



Big Bend Water District

- **FY '08 Operating Budget: \$2,715,970**
- **Allotment: 15,352 acre-feet per year**
 - 10,000 through a delivery contract with the Department of the Interior
 - 5,352 allocated through Article 8 of the SNWA 1995 Cooperative Agreement
- **Current Capacity is 15 million gallons per day**
 - Peak day delivery for 2007: 6.07 MG
- **Current Production Amount**
 - April 2008 production: 117.440 MG

Big Bend Water District

- Accounts
 - Residential: 4009
 - Commercial: 38
- Capital Improvement Program Project
 - 42-inch Casino Drive expansion
 - Estimated cost \$2.2M

Big Bend Water District

- Operation and maintenance of BBWD
- Agreement between Clark County and Clark County Sanitation District to operate and administer Big Bend
- 25-year agreement expires July 2008

Big Bend Water District

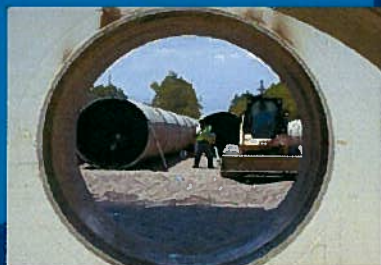
- Las Vegas Valley Water District to replace Clark County Water Reclamation District
- Expertise and depth of resources
- Challenges:
 - reliability of delivery
 - meeting growth



Clark County Water Reclamation District



*We're
All
About
Clean Water!*



Areas We Serve:

Blue Diamond
Indian Springs
Las Vegas Valley
Laughlin
Moapa Valley
Searchlight



[Click Here to Enter](#)

Laughlin Wastewater

- FY '08 Operating Budget: \$2,221,443
- Current Average Treated: 2.268 MGD
- Plant Capacity: 9 MGD
- Residential Accounts: 2351
- Commercial Accounts: 57
- Tertiary level treatment allows for river discharge

Laughlin Wastewater

Capital Improvement Program Projects

- **Project 572: Lift Station #3 Rehabilitation**
 - estimated cost \$13M
- **Project 630: Aeration Piping Replacement**
 - estimated cost \$1.685M
- **TBD32: Lift Station #2 Rehabilitation**
 - estimated cost \$1.1M
- **TBD46: Bleaching Building Project**
 - estimated cost \$737K