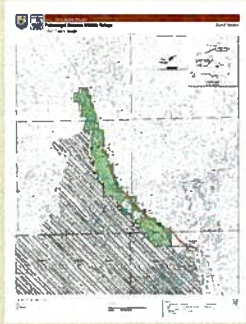
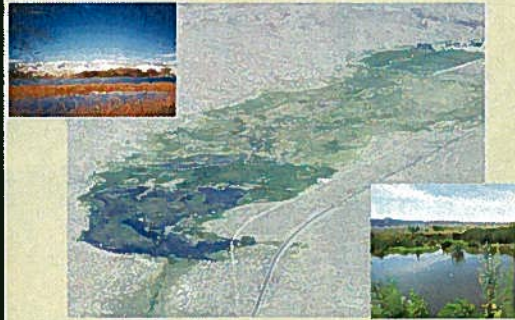


EXHIBIT E-1 - LANDS
Document consists of 3 pages.
Entire Exhibit Provided
Meeting Date: 03-07-08

Boundary Changes



Water Management



Invasive Species

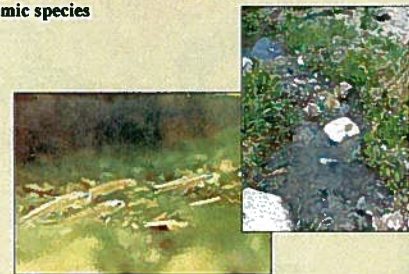
- 13 acres of hoary cress and perennial pepper weed treated
- 150 acres of salt cedar and Russian olive treated
- 277 acres of Russian knapweed treated



Moapa Valley National Wildlife Refuge

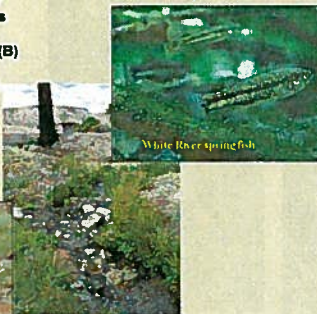
Established 1979

Provides habitat for the endangered Moapa dace and several other rare endemic species



Moapa Valley National Wildlife Refuge

"... to conserve (A) fish or wildlife which are listed as endangered species or threatened species or (B) plants 16 U.S.C. 1534 (Endangered Species Act of 1973)"



White River springfish

Moapa Valley National Wildlife Refuge

- Public use facilities
- Habitat restoration



Comprehensive Conservation Planning

- Provides long range guidance and management direction for the Refuge over 15 years
- Incorporates existing data, information, and institutional knowledge about the Refuge into one document
- "Living document"
 - monitoring and adaptive management

Major Components of a CCP

- Descriptions of refuge resources
- Refuge purposes and goals
- Long-range objectives
- Management strategies to reach objectives
- Monitoring programs



Questions?

