



Ivanpah Valley

Planning Southern Nevada's Future

Full Service Commercial Airport

Rosemary A. Vassiliadis

Deputy Director, Clark County Department of Aviation

January 23, 2008

EXHIBIT B - Transportation Issues

Document consists of 10 pages.

☒ Entire document provided.

A copy of the complete document is available through the Research Library (775/684-6827) or e-mail library@lcb.state.nv.us.

Meeting Date: 1/23/08

Proposed Supplemental Airport



Ivanpah Milestones



- **Federal Legislation Introduced – 1998**
- **Ivanpah Valley Airport Public Lands Transfer Act Signed – 2000**
- **Clark County Conservation of Public Land and Natural Resources Act – 2002**
- **Land Purchase Completed – July 2004**
- **EIS Notice-to-Proceed Issued – October 2005**

Project Scope



- Ultimate airport design for 30 - 35 million annual passengers
- Phase 1 development for 18 - 20 million annual passengers [subject of EIS]
- Intended to serve domestic and international airlines
- Supplement capacity available at LAS



Joint Lead Agencies: Federal Aviation Administration Bureau of Land Management



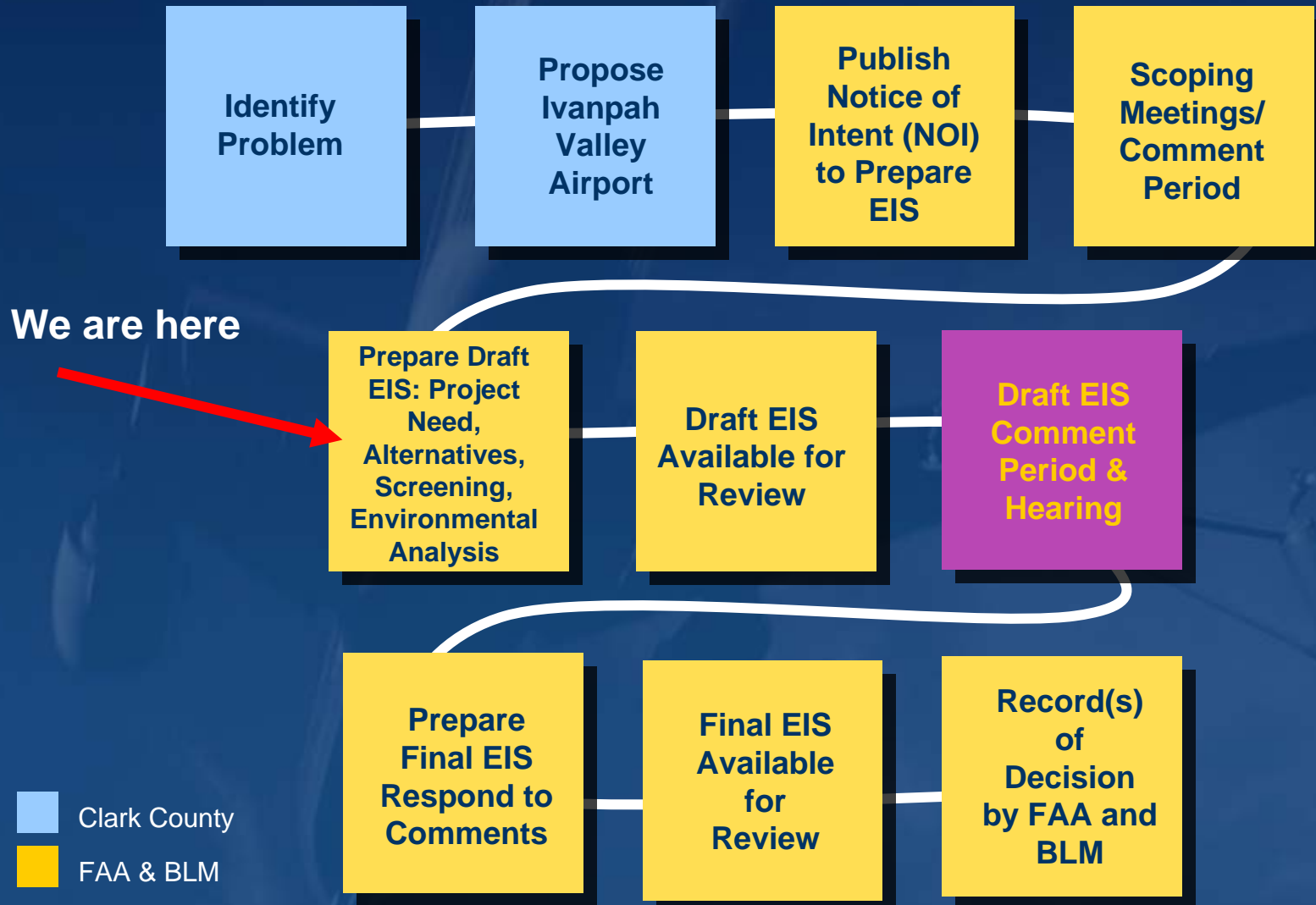
- Prepare the Environmental Impact Statement and Record of Decision;
- Conduct environmental analyses, public coordination, and inter-agency coordination;
- Ensure compliance with NEPA and other environmental laws and regulations;
- Supervise EIS contractor.



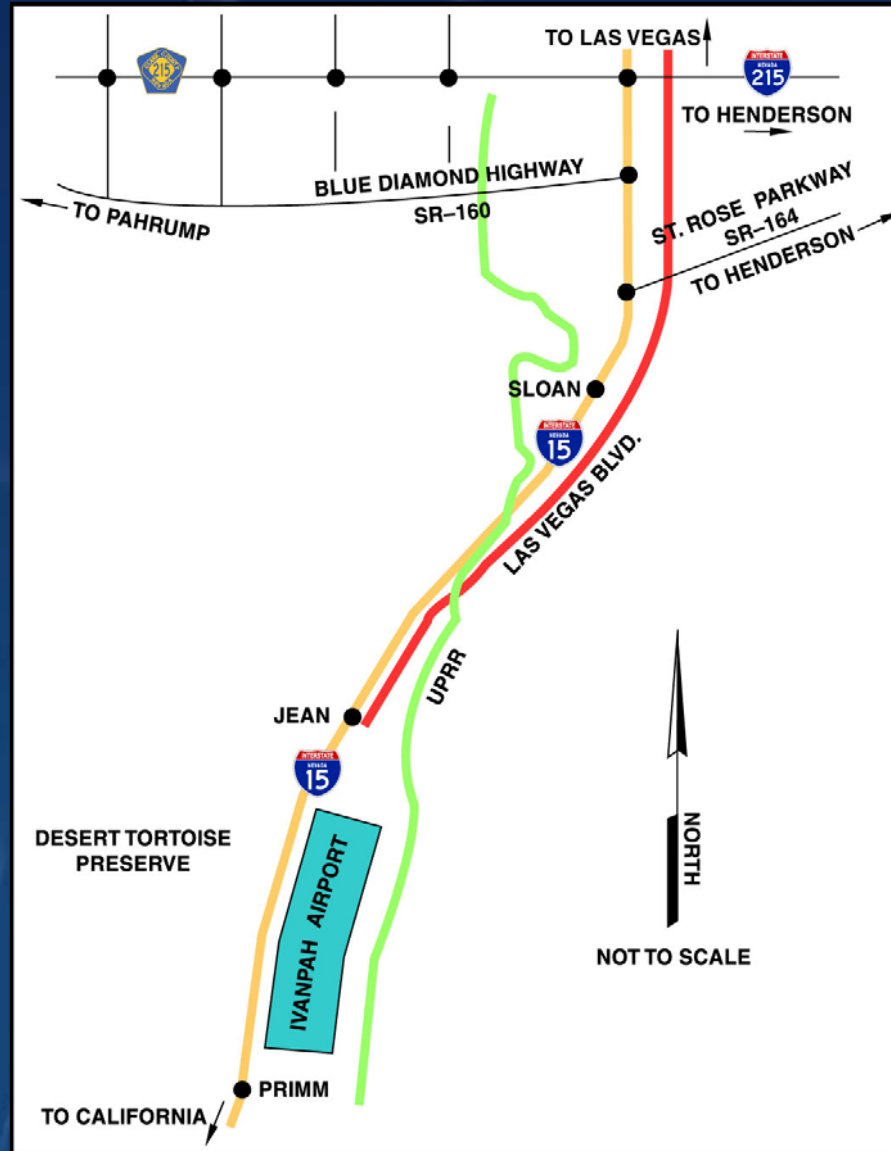
Airport Sponsor: Clark County Department of Aviation

- Facilitate and coordinate the exchange of technical information about McCarran, the Ivanpah Valley site, and other aviation facilities.
- Provide information about the County's goals and objectives for the proposed action.

EIS Process



Airport Access Overview



Development Schedule



Questions and Answers



THANK
YOU