

Nevada Dropout & Graduation Rates

Legislative Committee on Education

April 12, 2006

Presented by:

Carol J. Crothers, Assistant Director
Office of Assessments, Program Accountability, & Curriculum
Nevada Department of Education
ccrothers@doe.nv.gov

EXHIBIT H Committee on Ed

Document consists of 18 slides

Entire document provided.

A copy of the complete document is available through the
Research Library (775/684-6827) or e-mail library@lcb.state.nv.us.

Meeting Date 4-12-06

Overview

- Graduation & Dropout Rates in Nevada
- How rates are used
- Graduation & Dropout Statutes and Policies
- Rate Trends
- Future Considerations

Dropout & Graduation Rates

Although dropout rates are calculated independently of graduation rates, graduation rates incorporate dropout data.

To estimate graduation rate, a cohort of students is followed from the time they enter high school until their anticipated graduation (4 years). Students may drop out during any of the 4 years of their high school experience. If they don't, they must meet credit requirements and pass state mandated tests, among other things, in order to graduate.

Uses of Graduation & Dropout Rates

	Completers	Graduation Rate	Dropout Rate
AYP		✓	
NV Report Card	✓	✓	✓
Federal Reporting	✓	✓	✓

NAC 387.215

A dropout is a student who:

- Withdraws at the request of the school;
- Withdraws for a variety of personal reasons (e.g. employment, failing grades);
- Absence of the pupil for 10 consecutive school days if the whereabouts of the pupil are unknown;
- Withdraws because he or she is incarcerated;
- Withdraws for unexplained absence, as set forth in subsection 2 of NAC 387.220;
- A student who completes a high school grade but fails to enroll as expected the following school year.

Graduation Requirements

NAC 389.655 – 389.698

- Credit and course requirements
- HSPE requirements
- Diploma requirements (standard, advanced, adult, adjusted)

Certificate of Attendance

NAC 389.699

- A student who earns the required credits for high school completion, but does not pass the HSPE receives a Certificate of Attendance.

NV Dropout Rate Formula

Dropout rates are calculated each year at the high school, district, and state levels.

$$\frac{\text{Total Dropouts} + \text{Total Non>Returns}}{\text{Total Enrollment} + \text{Total Non>Returns}}$$

- Rates are reported by gender, race/ethnicity, grade (9-12), and for the total student population.
- Data is now being collected that will enable rates to be disaggregated by IEP, LEP, and socio-economic status.
- GED recipients are deleted from dropout counts.
- Nevada's formula is consistent with NCES "Annual Student" Rate.

NV Graduation Rate Formula

**Number of students earning Standard Diplomas +
Number of students earning Advanced Diplomas +
Number of students earning Adult Diplomas**

**Number of students that complete high school +
Number of 12th Grade Dropouts from Current Year +
Number of 11th Grade Dropouts from Previous Year +
Number of 10th Grade Dropouts from 2 Years Previous +
Number of 9th Grade Dropouts from 3 Years Previous**

- Completers = Diploma recipients (Standard, Advanced, Adult, & Adjusted) and students receiving Certificates of Attendance

Dropout Trends in NV

	1999-2000	2000-2001	2001-2002	2002-2003	2003-2004
NEVADA	6.1%	5.0%	6.3%	6.0%	5.8%
Carson City	3.9%	2.1%	1.8%	1.7%	2.0%
Churchill	2.0%	2.1%	1.9%	2.6%	3.3%
Clark	6.9%	5.7%	7.8%	7.6%	7.2%
Douglas	2.6%	1.9%	0.5%	1.0%	1.3%
Elko	4.1%	2.6%	3.1%	2.9%	3.5%
Eureka	0.0%	2.9%	2.1%	0.0%	0.0%
Humboldt	2.6%	3.2%	5.0%	5.4%	4.0%
Lander	3.4%	2.4%	1.1%	1.1%	3.6%
Lincoln	0.4%	80.0%	4.4%	0.7%	0.7%
Lyon	2.5%	1.8%	1.6%	2.5%	1.8%
Mineral	6.6%	3.7%	1.8%	0.0%	3.2%
Nye	4.3%	7.2%	3.6%	5.0%	5.0%
Pershing	1.2%	2.7%	1.5%	0.0%	0.4%
Storey	7.9%	14.0%	11.6%	7.5%	7.8%
Washoe	5.5%	4.3%	3.4%	3.7%	2.7%
White Pine	15.8%	11.0%	7.9%	2.0%	1.4%

Graduation Trends in NV

	1999-2000	2000-2001	2001-2002	2002-2003	2003-2004
NEVADA	66.2%	70.1%	72.0%	74.8%	67.0%
Carson City	84.6%	84.8%	91.9%	84.4%	81.8%
Churchill	75.7%	85.1%	87.9%	89.3%	77.9%
Clark	61.8%	66.1%	67.3%	71.7%	62.7%
Douglas	83.7%	87.0%	92.4%	90.9%	93.2%
Elko	81.6%	82.0%	84.8%	78.7%	70.1%
Eureka	95.8%	95.8%	86.4%	93.8%	100%
Humboldt	82.6%	85.2%	82.0%	81.2%	71.4%
Lander	76.2%	76.4%	82.5%	74.2%	77.6%
Lincoln	95.5%	98.8%	95.1%	81.3%	79.7%
Lyon	83.5%	83.8%	86.4%	83.1%	76.4%
Mineral	75.8%	70.9%	86.7%	76.0%	78.6%
Nye	67.0%	73.8%	81.1%	72.8%	54.1%
Pershing	93.2%	93.6%	88.3%	95.6%	87.7%
Storey	71.4%	65.9%	76.7%	70.8%	50.0%
Washoe	70.3%	74.9%	78.2%	80.3%	77.7%
White Pine	59.7%	66.5%	61.1%	81.4%	74.7%

NCES Average Freshmen Grad Rate

October 2005

Diplomas Awarded

Average Freshman Enrollment

Average Freshman Enrollment = Average 8th, 9th, 10th grade cohort enrollment for graduating class

	U.S.	NV
2002	72.6%	71.9%
2003	73.9%	72.3%

“Kids Count” Dropout Rate

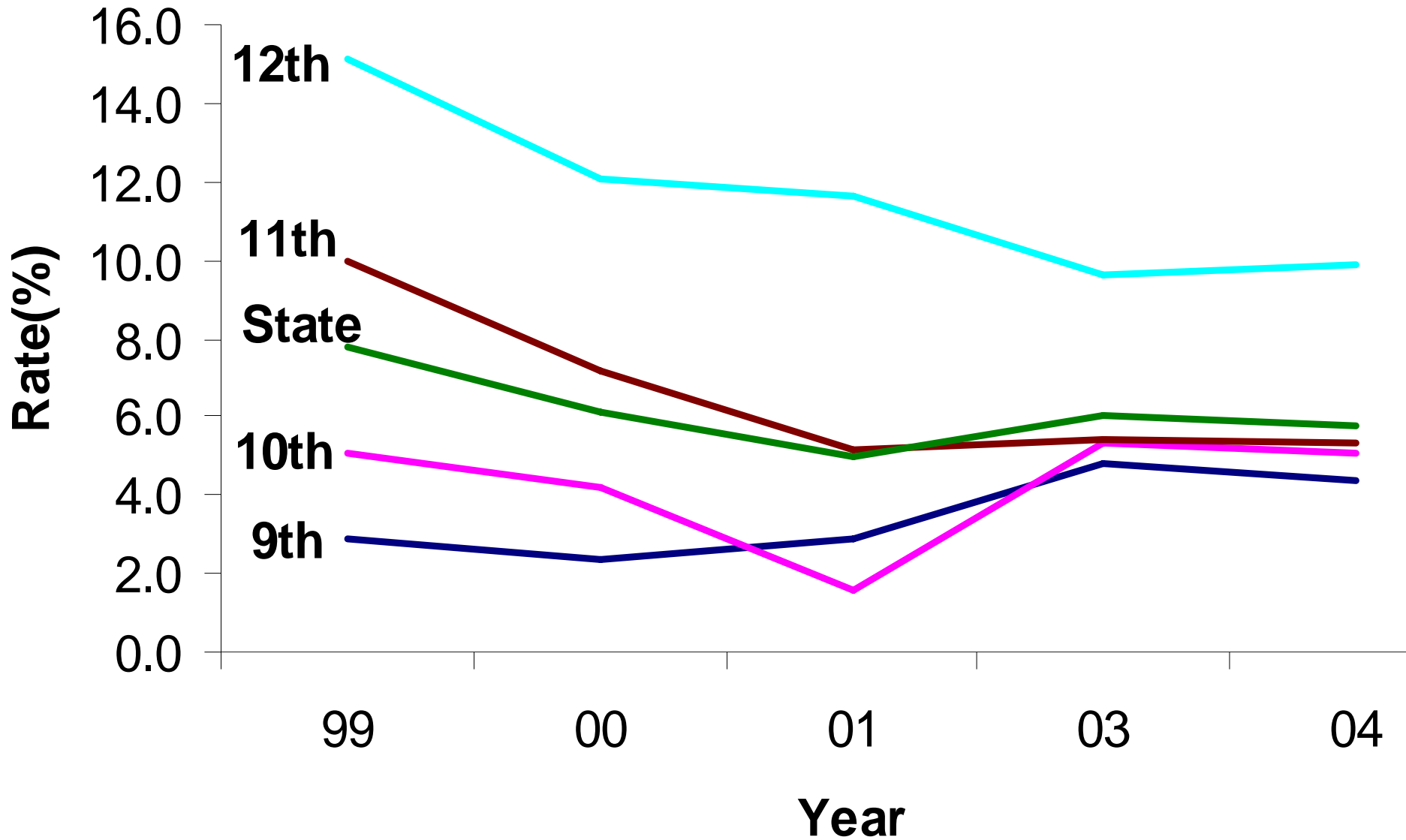
- Nationwide survey of households
- Teenagers between the ages of 16 and 19 who are not enrolled in high school and are not high school graduates
- Includes a sample of NV residents, not necessarily former students of NV schools

2000	2001	2002	2003	2004
16%	10%	12%	10%	11%

NAC 389.659

- In the 1999-2000 school year, “matriculation” changed from the number of years a student was in high school to the number of credits accumulated
- Students were eliminated from their “natural” cohort and thus, eliminated from cohort’s graduation rate
- This change caused an influx of 9th & 10th grade retentions & dropouts and a spike in the graduation rate

Dropout Rate by Grade 1999-2004



Dropout Rate by Grade 1999-2004

		SCHOOL YEAR				
		99	00	01	03	04
GRADE	9th	2.9	2.4	2.9	4.8	4.4
	10th	5.1	4.2	1.6	5.3	5.1
	11th	10.0	7.2	5.2	5.4	5.3
	12th	15.1	12.1	11.6	9.6	9.9
	State	7.8	6.1	5.0	6.0	5.8

NGA Graduation Rate

- National Governor's Association (NGA): Task Force on State High School Graduation Data
- A new way to calculate graduation rate in the future
- Will be calculated the first time for the class of 2009
- Tracks individual students over time

NGA Grad Rate Formula

Students who graduate on-time (e.g. class of 2009)

9th Grade enrollment in 2006 +

Students who transfer into system between 2006 & 2009 –

Students who transfer out of system between 2006 & 2009