
Nevada Division of State Parks

Nevada's Natural & Cultural Treasures

EXHIBIT H - LANDS

Document consists of 13 slides.

Entire Exhibit Provided

Meeting Date: 01-27-06

Our Mission

“....to acquire, plan, develop, interpret, operate and maintain a system of parks and recreation areas and to preserve areas of scenic, historic and scientific significance for the use and enjoyment of residents and visitors.”

History of Nevada State Parks

- ❑ **March 26, 1935 – A State Park Commission is established**
 - ❑ **The first four areas officially named as State Parks**
 - ✓ Cathedral Gorge
 - ✓ Valley of Fire
 - ✓ Kershaw-Ryan
 - ✓ Beaver Dam
-

Regions/Parks

- ❑ **Four (4) Regions**
 - ✓ Carson
 - ✓ Fallon
 - ✓ Panaca
 - ✓ Las Vegas
- ❑ **26 State Park Units**
- ❑ **132,529 total acres**
- ❑ **280-300 structures, many that are historical**
- ❑ **Annual Visitation – 3,242,147**
- ❑ **Annual Revenue - \$2,448,915**



The Average State Park Agency

- ❑ **The average state park agency manages 232,000 acres of land.**
 - ❑ **Serves more than 14.5 million visitors each year.**
 - ❑ **Collects more than \$10 million in annual revenue.**
 - ❑ **The average agency budget is nearly \$30 million per year, more than half of which comes from general funds.**
-

Dangberg Home Ranch

Established – 2004 (partnership with Douglas County)

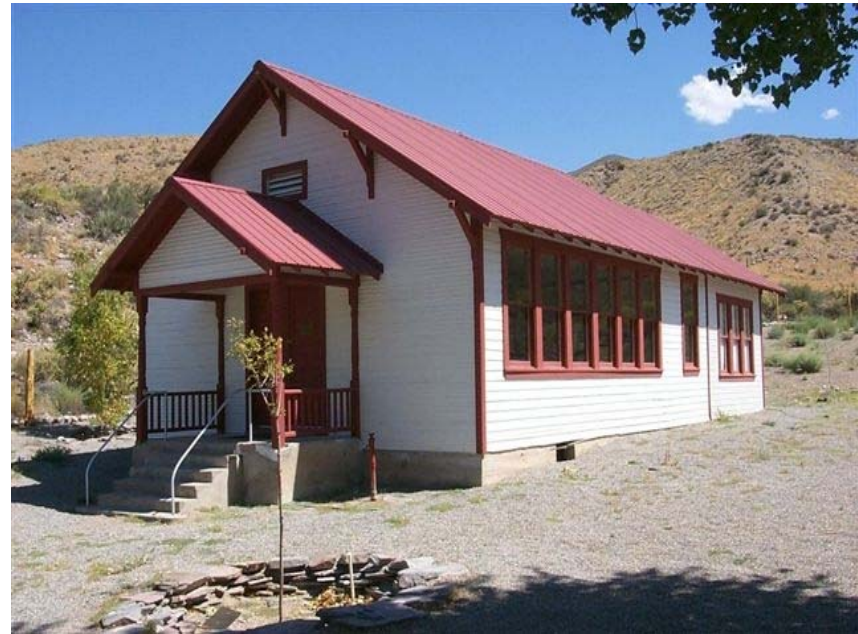
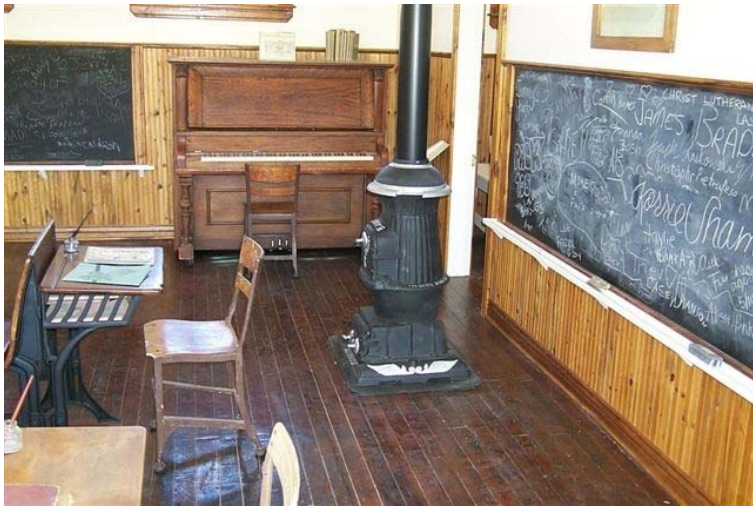
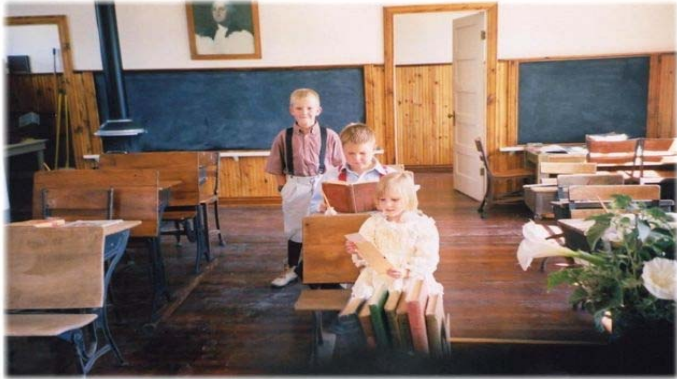
Acreage – 5.3



Elgin Schoolhouse

Donated – 2005

Acreage - 1



Floyd Lamb

Transfer agreement completed

Will transfer to the City of Las Vegas on June 30, 2007



Benefits of State Parks

□ Economic

- ✓ The impact of state parks on state and local economies is significant. Every recreation dollar expended changes hands several times before leaving the local communities in which it is spent.
 - ✓ State Parks operating expenditures and park visitor expenditures contributed \$47,681,489 to local economies in 2003. The total estimated economic impact of these expenditures is \$62,034,113.
 - ✓ Estimated that out-of-state visitors directly spend \$19,572,222 with a total estimated economic impact of \$36,600,055.
-

Benefit of State Parks

□ Other

- ✓ Improves the quality of life for residents and visitors
 - ✓ Enhances various educational programs by adding field study opportunities
 - ✓ Provides affordable family recreational opportunities
 - ✓ Provides public access to unique historic, natural and recreational areas
 - ✓ Promotes better health through physical activity
 - ✓ Provides opportunities for community and statewide activities
-

2002 Conservation Bond (Q-1)

\$27,000,000 allocated over a nine-year period.

❑ Completed

- ✓ Mormon Station -1.2 acre acquisition
- ✓ Rye Patch - 275 acre acquisition
- ✓ Rye Patch - boat parking area
- ✓ Sand Harbor - visitor center, parking, utilities
- ✓ Echo Canyon – walking, fishing access bridge
- ✓ Old Mormon Fort - visitor center
- ✓ Lahontan - contact station

❑ In Progress

- ✓ Valley of Fire - 25 unit campground
 - ✓ Big Bend - campground, contact station and roadway paving
 - ✓ Mormon Station -restrooms, trail and picnic sites
 - ✓ Belmont Courthouse – stabilization project
 - ✓ Lahontan – restrooms (5)
 - ✓ Lake Tahoe – backcountry campground
-

2002 Conservation Bond (cont.)

□ In Progress (cont.)

- ✓ Ft. Churchill, Buckland Station – 1st floor interior restoration
 - ✓ Ft. Churchill, Buckland Station – day use development
 - ✓ Ward Charcoal – campground expansion
 - ✓ Kershaw Ryan – campground, office, contact station and roadway paving
 - ✓ Dangberg Home Ranch – artifact inventory, master plan, stabilization and phase 1 development
 - ✓ South Fork – campground and shade ramadas
 - ✓ Washoe Lake – campground and shade ramadas
-

Questions

Dave Morrow
Administrator
775-684-2771
dmorrow@parks.nv.gov

Allen Newberry
Chief of Operations
(775) 684-2772
newberry@parks.nv.gov