



WATERFALL FIRE

Carson City

July 2004

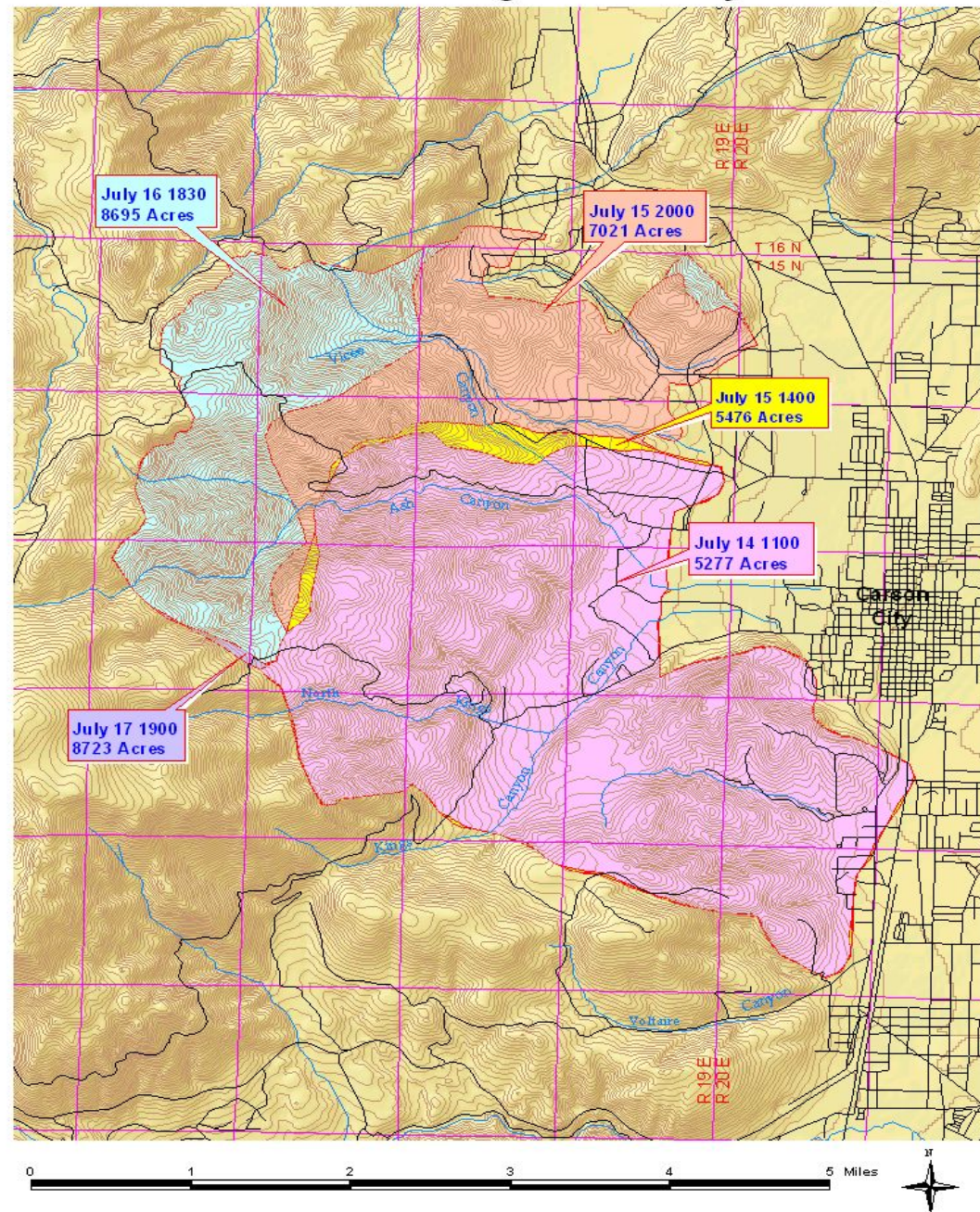
EXHIBIT D Lands

Document consists of 38 slides.

☒ Entire document provided.

Meeting Date: November 15, 2005

Waterfall Incident Fire Progression July 14 - 17, 2004



Fire Overview

- 8,700 acres
 - 2,782 USFS
 - 2,507 Carson City
 - 2,495 Private Land
 - 710 State of Nevada
 - 206 Tribal Land













Public Damage

- Fire Trucks

- Carson City, Lyon County, Forest Service, NDF, Forest Service trucks lost or damaged

- Water Facilities

- Ash Canyon and Timberline tanks and equipment damaged

- Quill Caretakers House Lost





Private Damage

■ Houses	
■ Lost	17
■ Damaged	14
■ Commercial Structures	
■ Lost	1
■ Damaged	2
■ Outbuildings	32
■ Vehicles	51



Burned Creek Drainages



Gabions in Vicee Canyon



Mud Flow in Vicee Creek



Rehabilitation Efforts

- Flood Control Berms
- Straw Wattles
- Log Erosion Barriers
- Brush Clearing and Chipping
- Aerial Seeding and Mulching
- Drill Seeding and Mulching
- Hand Seeding and Mulching
- Drainage Basin Construction
- Tree Salvage
- Reforestation

Flood Control Berms



Straw Wattles



Log Erosion Barriers



Seeding and Mulching





Drainage Basin Enlargement



06/29/2005 11:51

Barriers



Sandbagging



Volunteers





Planting Trees

Road Reconstruction - Ash Canyon





Timber Salvage

- The Salvage Operations on Carson City's, John Serpa's and Carson Lodge's Lands resulted in the removal of 984 truckloads of logs with a combined weight of 24,413.47 tons of fuel that is no longer on the ground for the next fire. Approximate combined net volume for the three different ownerships is 4,251,837 board feet.
- The slash in the stream zones has been cleared by Superior Helicopter personnel







Remaining Work

- Remaining work to close out logging operations
 - Rehab landings: All the landings in Ash Canyon have been seeded with the seed left over from seeding the burn
 - The landings in Vicee Canyon and Lakeview still need to be rehabbed
 - All landings will need some mulch scattered across them (the rice straw at Timberline could be used)
 - Erosion control work consisting of outsloping roads and installing rolling dips in the road (Ash Canyon)
 - Rehab roads constructed across the Joost property and the road to the landing in Lakeview
 - Lopping down of slash in some areas
- Remaining FEMA / Drainage Work
 - Vicee Basin
 - Outlet Structure
 - Erosion Control
 - C-Hill
 - Channel Construction
 - Land Purchase for Basin

Cost Summary

■ Fire Suppression

■ Revenues:

■ Mutual Aid	\$60,250
■ FEMA	\$160,477
■ Insurance	\$89,566
Total	\$310,293

■ Expenses:

■ Operating	\$145,273
■ Equipment	\$318,899
Total	\$464,172

■ Deficit (\$153,879)

Cost Summary

■ Rehabilitation and Drainage

■ Revenues:

■ FEMA	\$1,105,028
■ Subconservancy	\$120,000
■ Donations	\$9,781
■ Miscellaneous	\$12,037
■ Operating Transfers	\$500,000
■ Storm Water Bond	\$1,222,538
Total	\$2,969,384

■ Expenses:

■ Rehabilitation	\$1,934,569
■ Strom Water	\$1,222,538
Total	\$3,157,107

■ Deficit	(\$187,723)
-----------	-------------

Cost Summary

■ Transfers Requested

■ Insurance Fund

■ Equipment Replacement	\$153,879
-------------------------	-----------

■ Water Fund

■ Logging Operations	\$232,269
----------------------	-----------

■ Non-FEMA expenses related to watershed protection	\$94,304
--	----------

■ Less Operating Transfer	(\$250,000)
---------------------------	-------------

Total	(\$76,573)
-------	------------

■ Stabilization Fund

■ Net Amount Remaining	(\$111,150)
------------------------	-------------

