

## Senate Concurrent Resolution No. 26

Briefing of Existing and Available Water Rights Held by the State and Local Governments in the Truckee Meadows

January 19, 2006

Presented by Washoe County Department of Water Resources  
Vahid Behmaram, Water Rights Manager



Department of  
  
Water Resources

EXHIBIT F Washoe Document consists of 37 slides  
☒ Entire document provided.  
☐ Due to size limitations, pages \_\_\_\_ provided.  
A copy of the complete document is available through the Research Library  
(775/684-6627 or e-mail [library@tes.state.nv.us](mailto:library@tes.state.nv.us)). Meeting Date: January 19, 2006

## Index

- 1) Water Rights Associated With Washoe County Water Systems
- 2) Water Rights associated with Roadways
- 3) Water Rights associated with County Parks
- 4) Water Rights associated with Winnemucca Ranch Importation Project

## 1) Water Rights Associated with Utility Operations

---

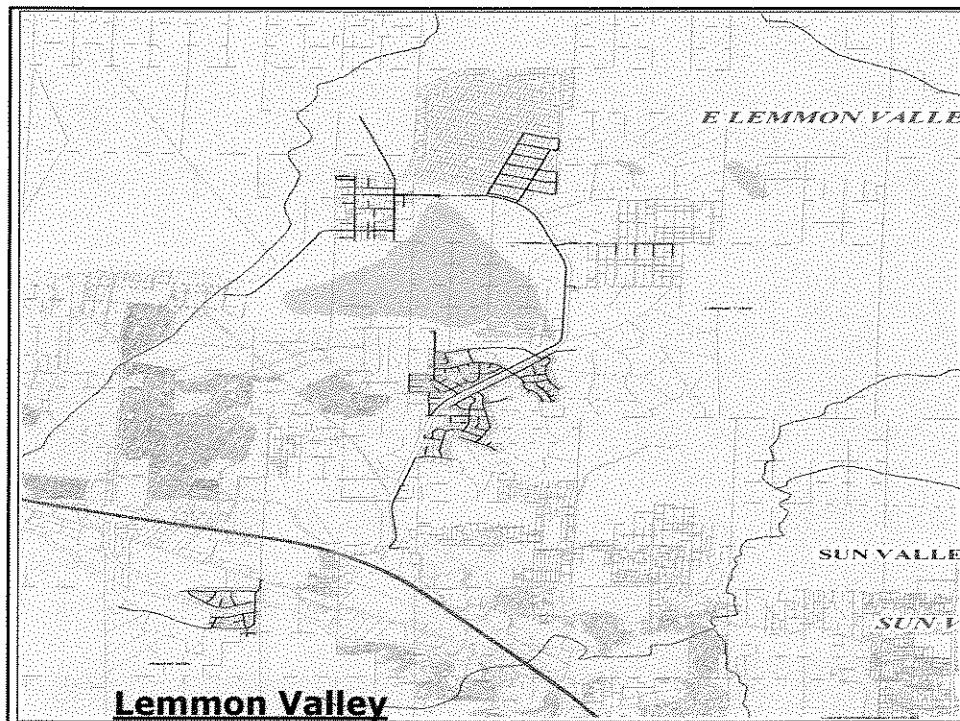
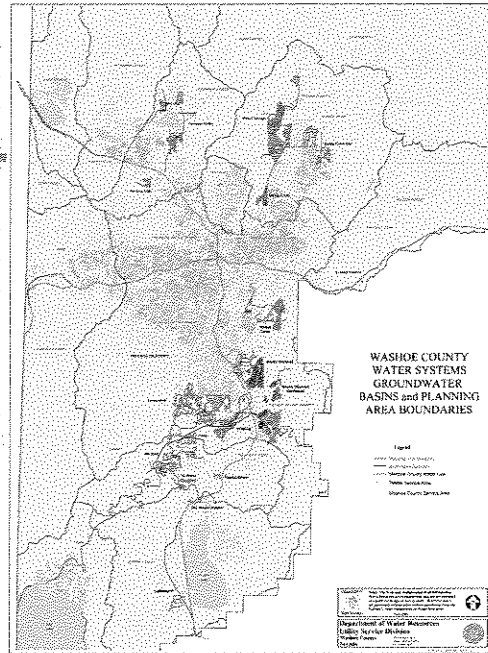
- Washoe County Department of Water Resources Operates 18 water systems within 7 different hydrographic basins in Southern Washoe County,
- Washoe County holds in excess of 27,000 acre-feet of water rights associated with these water systems,
- Washoe County also holds 5500 acre-feet of Effluent appropriations associated with three treatment facilities and re-use systems.
- Washoe County holds in excess of 1500 acre-feet of return flow water mostly from Steamboat Creek and other sources.

## Definitions and Terminology

---

- |             |  |
|-------------|--|
| Committed = | Water Rights are committed to existing development.  |
| Banked =    | Water Rights are held in trust for future use by a developer.                                |
| Available = | Water Rights available for new development.  |
| Allocated = | Water Rights designated for drought reserve, contingencies, and general operational reserve. |

## Overall Map



Lemmon Valley Water system:

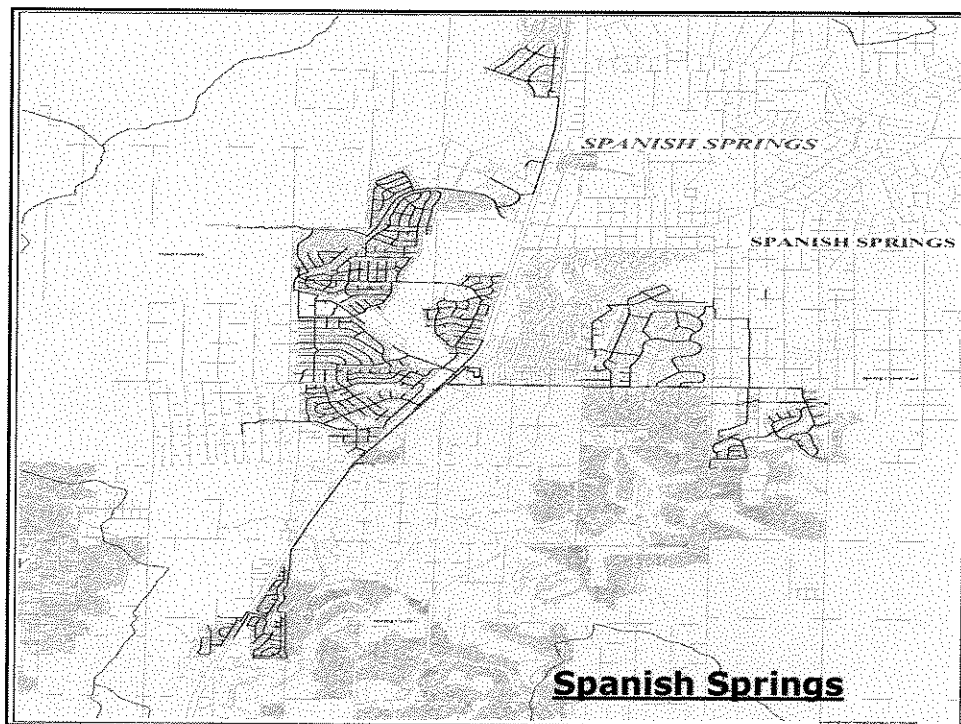
---

Committed Ground Water Rights = 1239.0 AF

Banked Ground water rights = 20 AF

Horizon Hills Water system :

Committed Ground Water Rights = 138.71 AF



## Desert Springs and Spring Creek Systems:

---

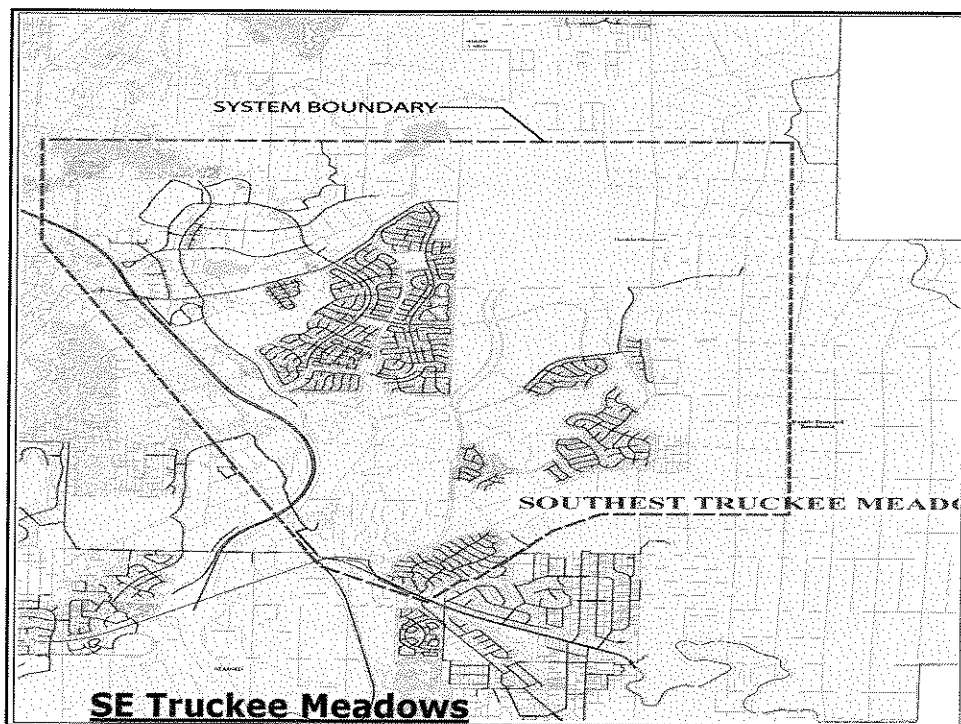
Committed Ground Water Rights = 3378.59 AF

Committed Truckee River Water Rights = 2012.96 AF

Banked Truckee River Water Rights = 225.4 AF

Allocated Truckee River Water Rights = 280 AF

50% Orr Ditch Contribution to Balance the Basin



## Double Diamond Water System

Committed Ground Water Rights = 561.99 AF

Committed Truckee River Water Rights = 1980.15 AF

Banked Truckee River Water Rights = 865.34 AF

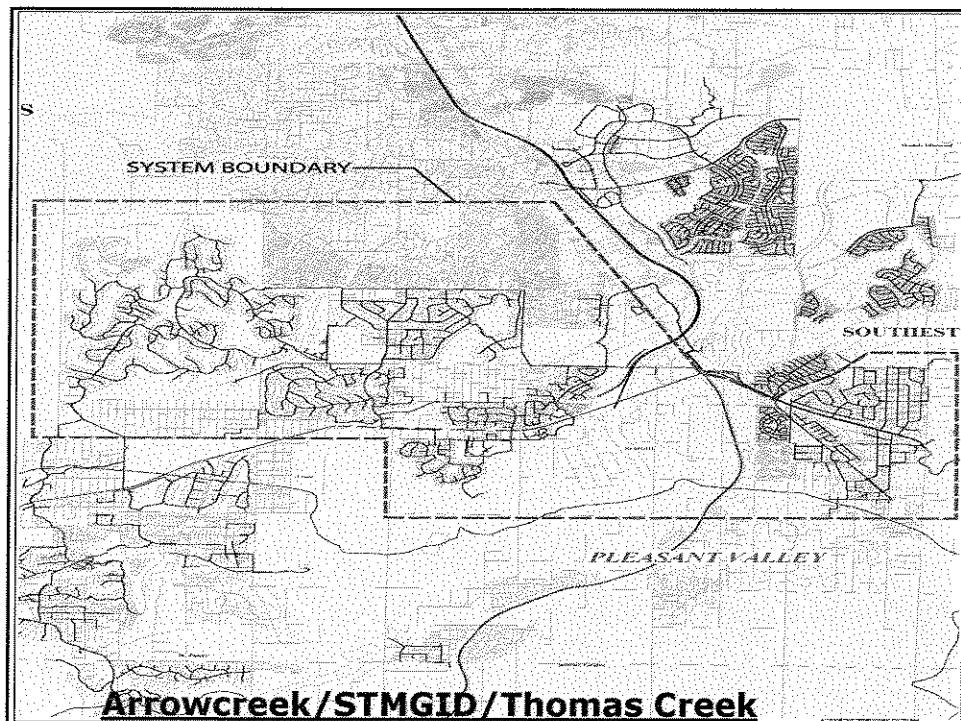
Banked Tributary Water Rights = 2463.00 AF

includes 333.00 Af of Steamboat Creek

Available Tributary Water Rights = 1325.00 AF

includes 225.00 Af of Steamboat Creek

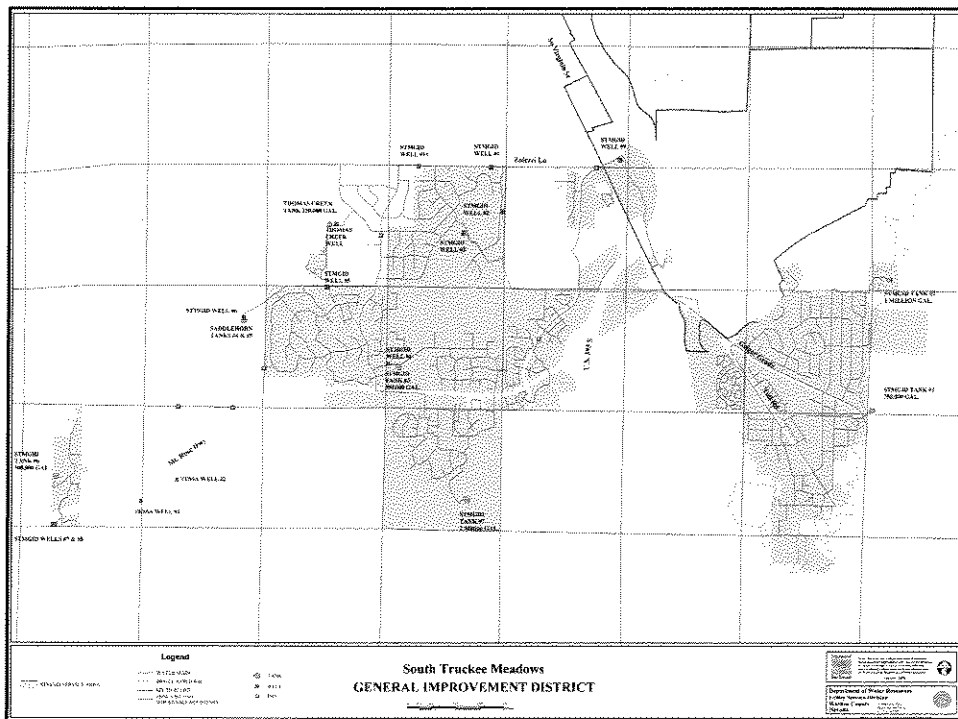
Allocated Ground and Truckee River Water rights = 507.29



## ArrowCreek and Thomas Creek

Committed Ground Water Rights = 1,109.14 AF

Allocated Ground Water Rights = 53.17 AF



# STMGID

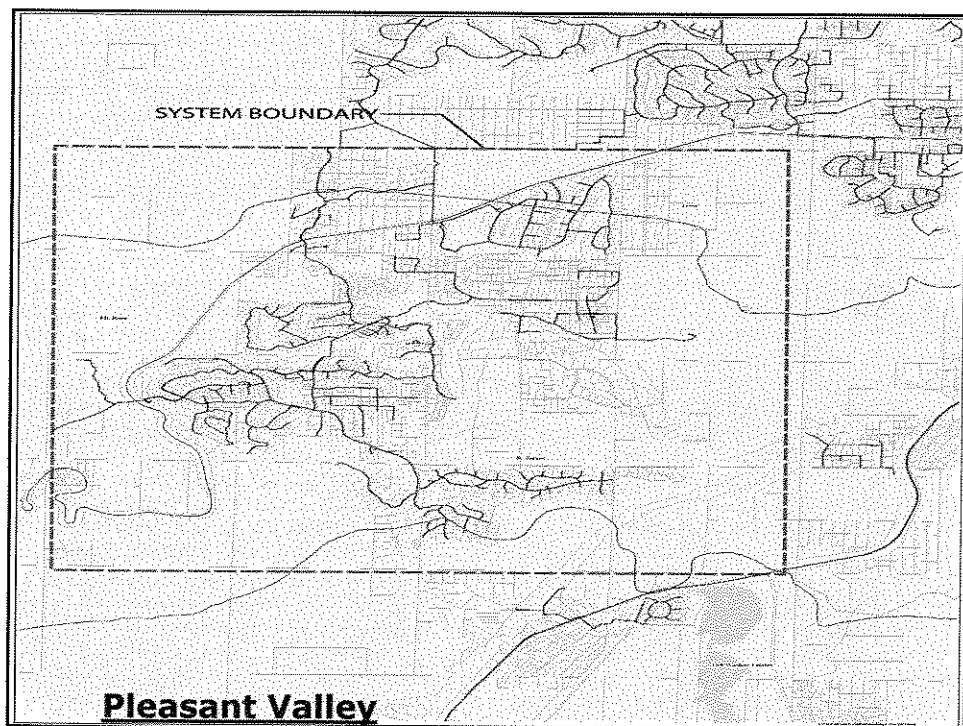
South Truckee Meadows General Improvement District

Committed Ground Water Rights = 3635.95 AF

Banked Ground Water Rights = 704.91 AF

Allocated Ground, Truckee River and Tributary Creek

Water rights = 729.80 AF





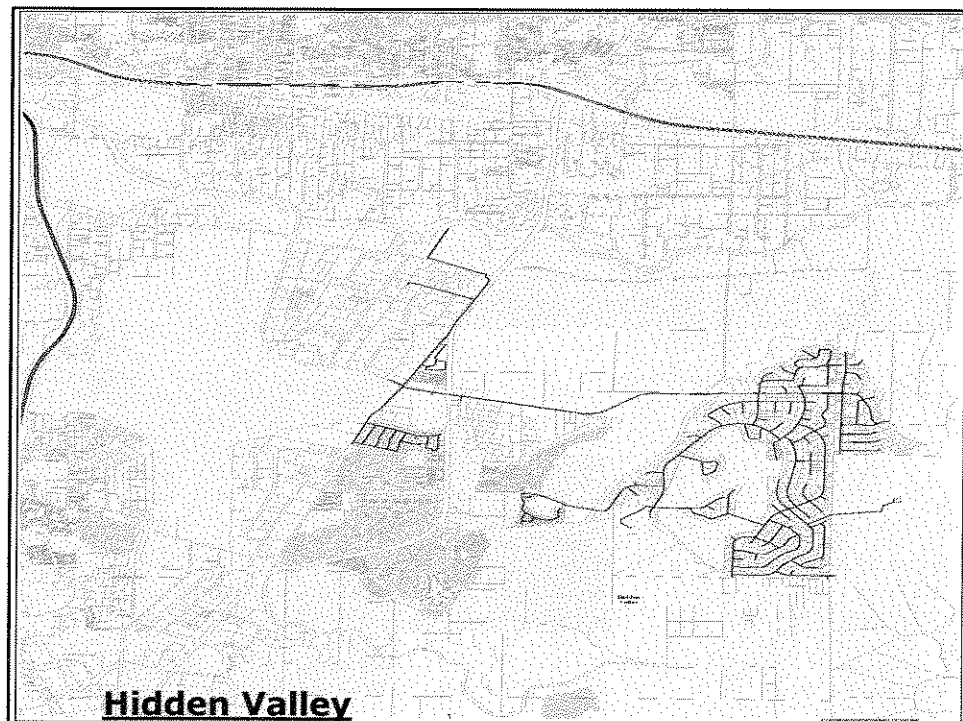
## Mount Rose, St. James, Timberline and Sunrise Water System:

---

Committed Ground Water Rights = 1994.60 AF

Banked Ground Water Rights = 1503.97 AF

Ground water figures include water rights held for domestic well dedication  
Figures include water rights associated with Tessa and Callamont wells.



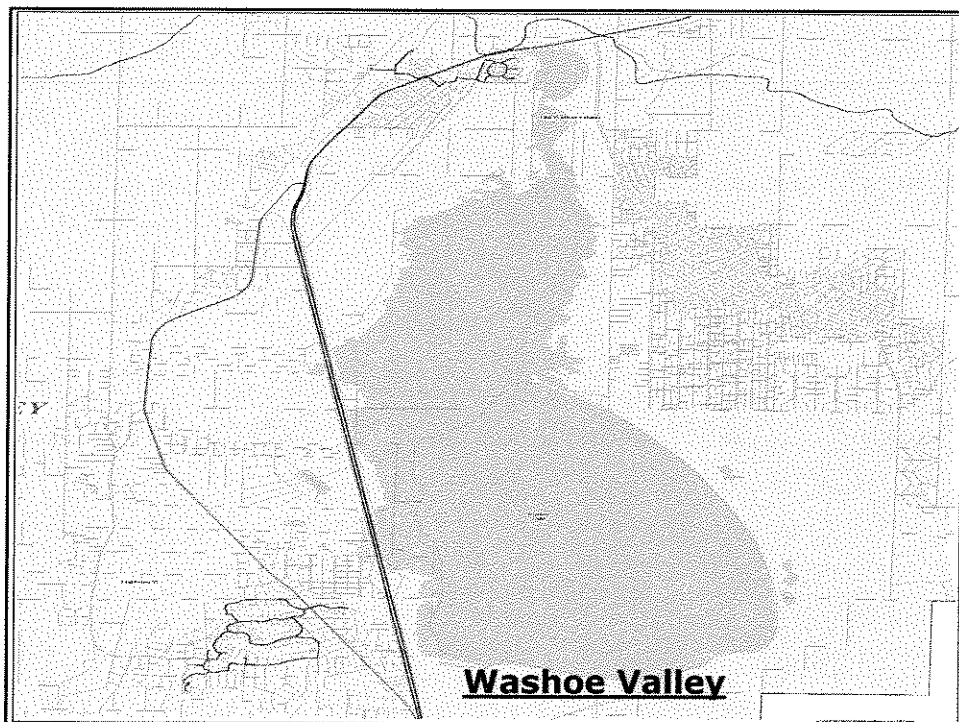
## Hidden Valley Water System:

---

Committed Ground Water Rights = 803.67 AF

Committed Truckee River Water Rights = 608.8 AF

Ground water figures include water rights held for domestic well dedication



## Lightning “W” Water System :

---

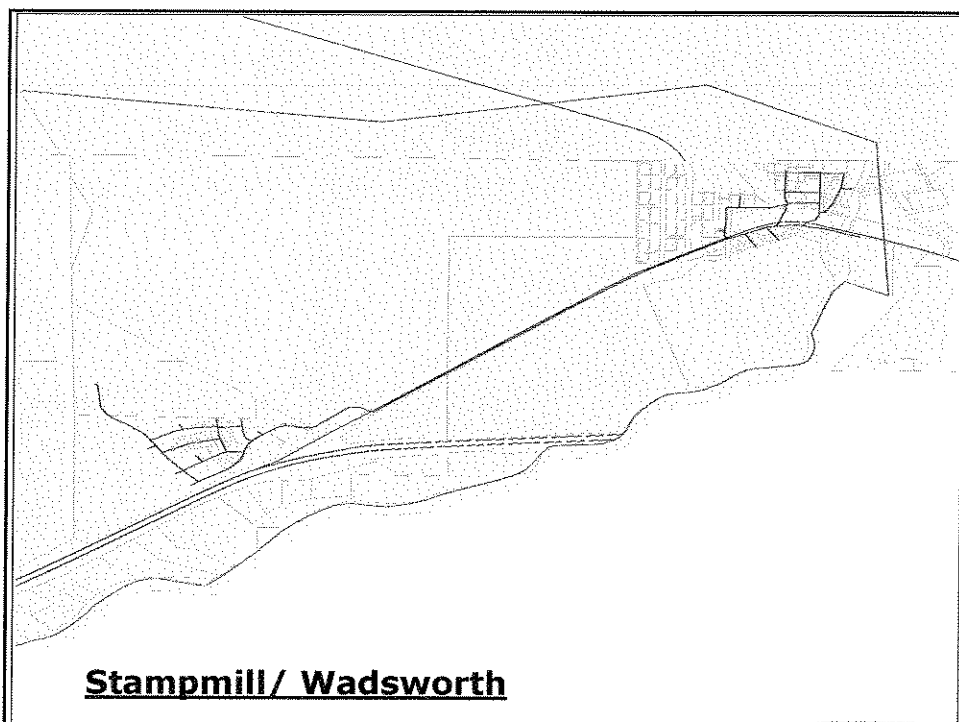
Committed Ground Water Rights = 151.99 AF

Banked Ground Water Rights = 36.1 AF

Ground water figures include water rights held for domestic well dedication

### Old Washoe Estates:

Committed Ground Water Rights = 68.72 AF



### Stampmill Estates Water System:

---

Committed Ground Water Rights = 50.4 AF

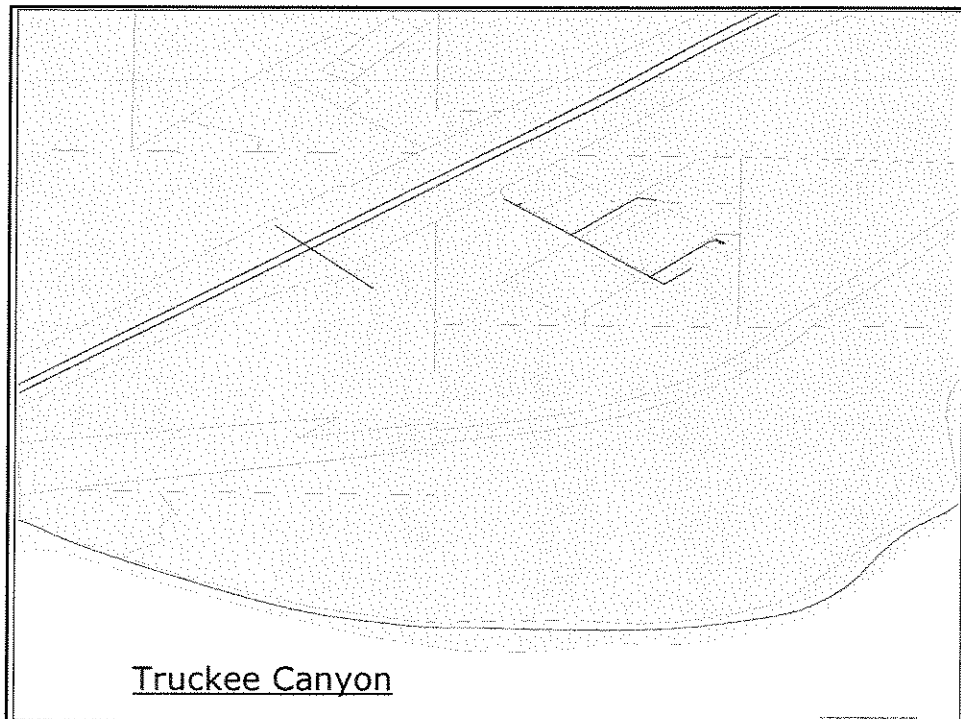
Banked Ground Water Rights = 7.1 AF

### Wadsworth Water System:

Committed Ground water rights = 100.81 AF

Allocated Truckee River Water Rights = 407.25 AF

(Claim 14, Transferred to Washoe County in 1927, may be used for Truckee river Water Quality or M&I supply )



Truckee Canyon Water System:

---

Committed Ground Water Rights = 8.15 AF

Banked Ground Water Rights = 191.85 AF

Truckee Canyon Water System:

---

Committed Ground Water Rights = 8.15 AF

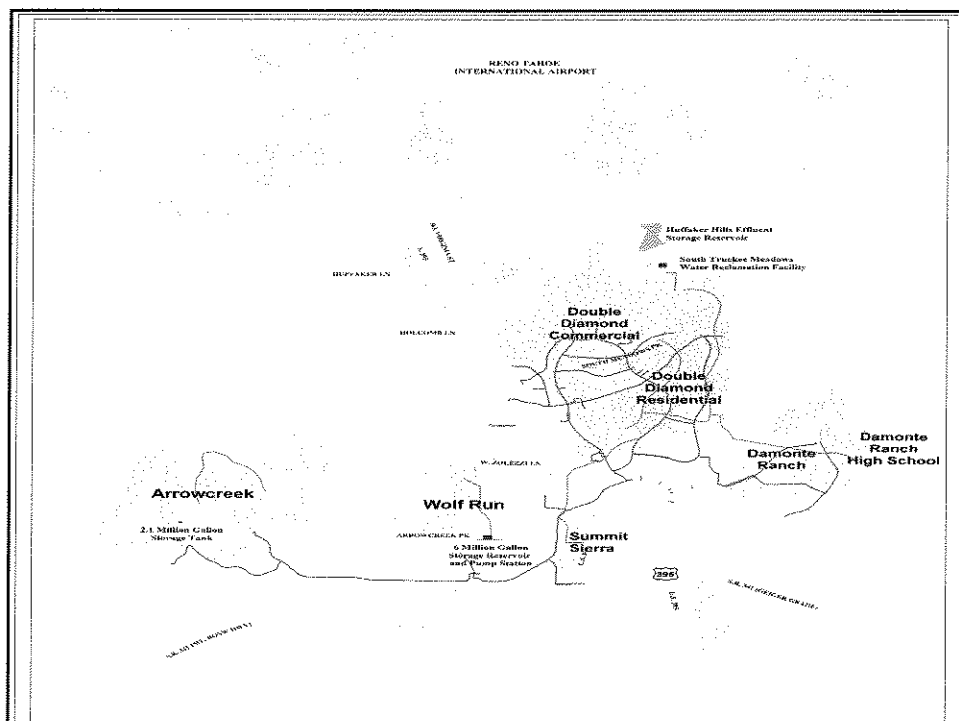
Banked Ground Water Rights = 191.85 AF

Truckee Canyon Water System:

---

Committed Ground Water Rights = 8.15 AF

Banked Ground Water Rights = 191.85 AF



## RECLAIMED WATER SYSTEM COMPONENTS

<b>Storage Capacity</b>	<b>Huffaker Reservoir: 4,000.00 ac-ft</b> <b>Fieldcreek Reservoir: 6.0 MG</b> <b>ArrowCreek Tank: 2.1 MG</b>
<b>Pumping Capacity</b>	<b>8,400 gpm from STMWRF</b> <b>2,800 gpm from Fieldcreek Reservoir</b>
<b>Transmission Main Installed</b>	<b>103,000 feet, 19.5 miles</b> <b>Sizes: 6" to 24"</b>
<b>Service Connections</b>	<b>299, including 3 golf courses</b>

## Summary

**Total Committed Water Rights = 17,843.93 AF**

Ground water component = 13,242.02 AF

Truckee River water component = 4601.91 AF

**Total Banked Ground, Truckee River and Tributary**

**Water Rights = 6,017.67** includes 333.00 AF of Steamboat Creek

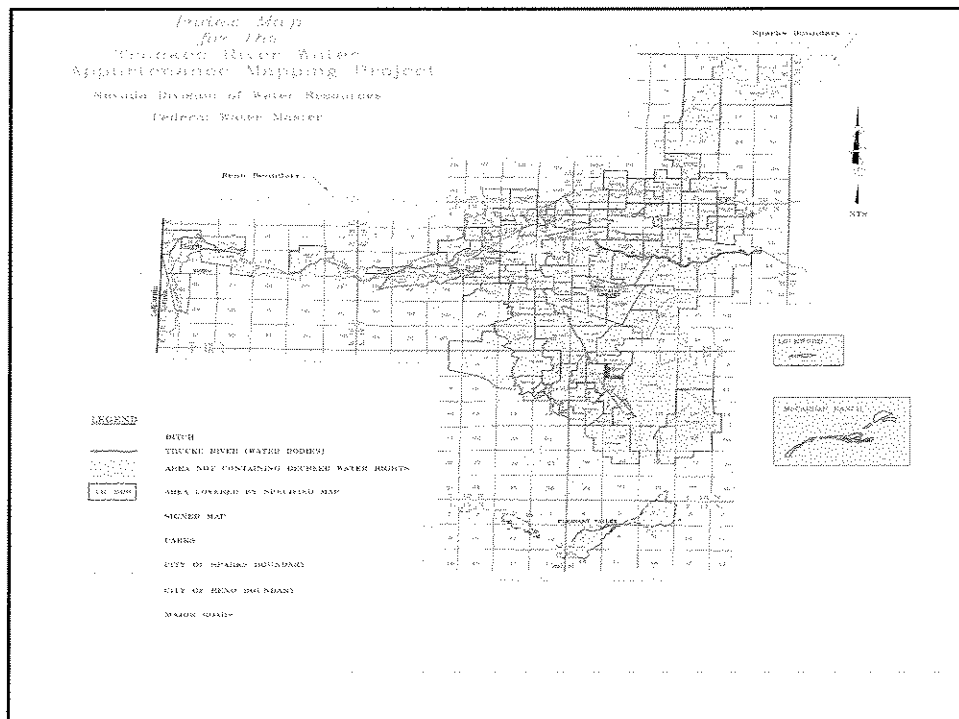
**Total Available Tributary Rights = 1,325.00 AF**

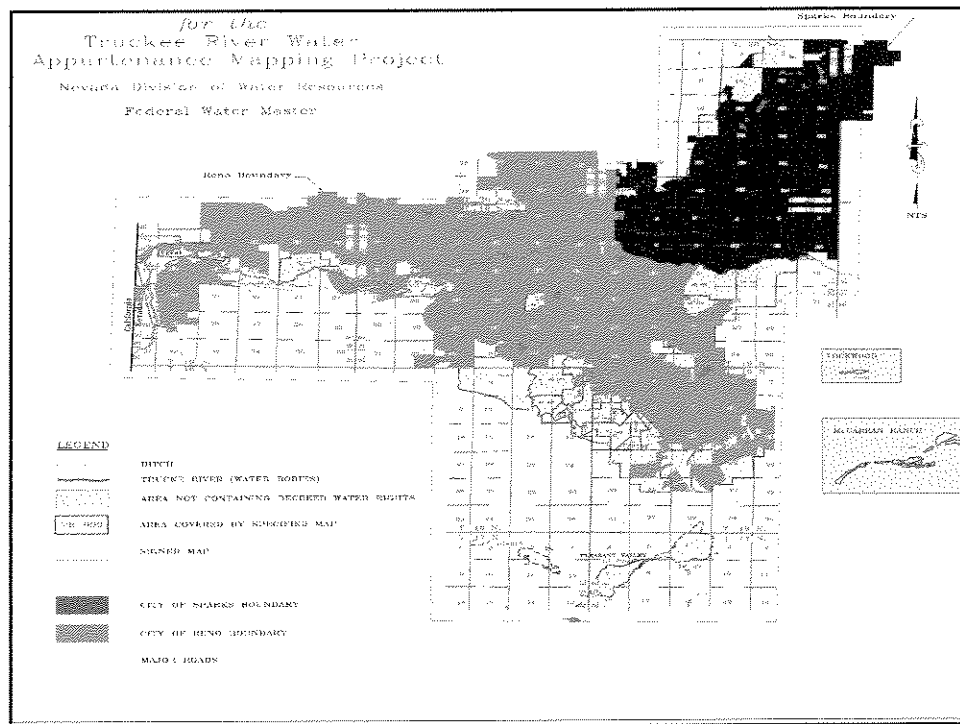
includes 225.00 AF of Steamboat Creek

**Total Allocated Ground, Truckee River and Tributary**

**Water Rights = 1,977.59 AF**

## 2) Water Rights associated with Roadways





## Discussion

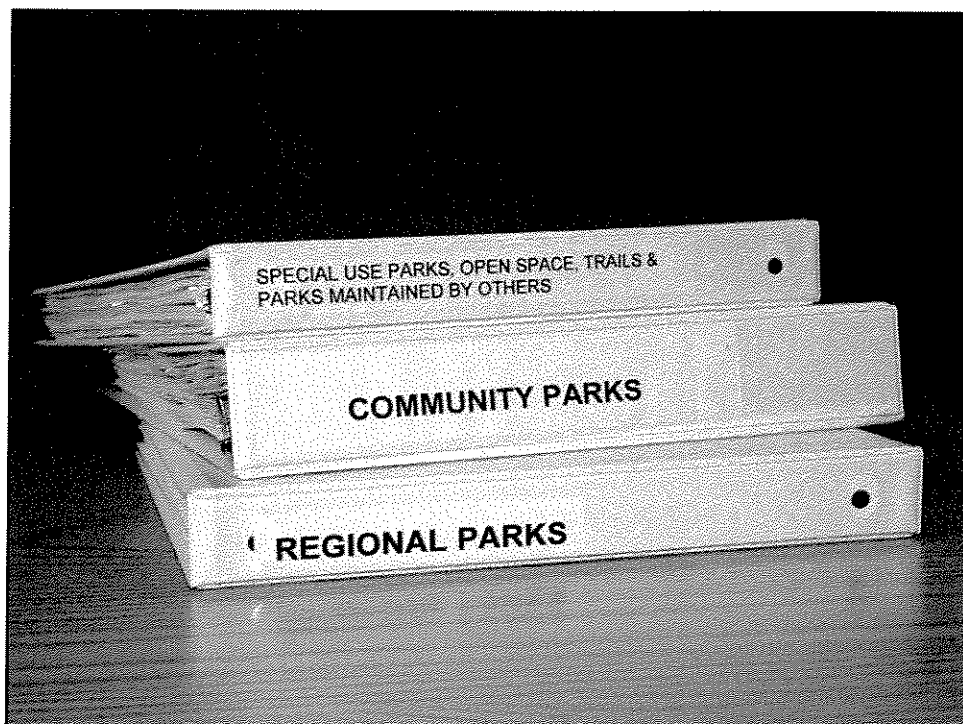
- 1) Majority of public roads with appurtenant water rights are in older core of Reno and Sparks
- 2) Some of the remaining large parcels within the un-incorporated Washoe County consist of a) University Farms, b) Rancho San Rafael Park c) Washoe County Golf Course d) Caughlin Ranch e) Parcels with water rights reserved or otherwise stripped for development purposes
- 3) Those portions of Southwest Reno within the un-incorporated Washoe County will yield some water rights. However, the ratio of public roadways to surrounding lands is much smaller in these areas.
- 4) Washoe County DWR has identified about 111 AF of Truckee River and Tributary water rights, originating from roads.



### 3) Water Rights associated with County Parks

---

Washoe County Department of Parks and Recreation is conducting a comprehensive inventory of all Parks land holding and appurtenant water rights. The Parks department anticipate the completion of the inventory by February of 2006.



## Discussion

---

- Washoe County Department of Regional Parks & Open Space manages over 7,000 acres of land. The majority of these lands are native landscapes and do not have water rights.
- The majority of all water rights held by the County Parks is currently being used on the park lands or is slated for future construction on existing parks.
- Few, if any County parks have appurtenant water rights, which were transferred with the land inadvertently.
- Future conversion of County Parks to alternative sources of water, such as treated effluent, could result in availability of the associated water rights.

### 4) Water Rights associated with Winnemucca Ranch Importation Project

---

- In 1987 Washoe county acquired about 3500 AF of water rights from the Winnemucca Ranch. Yield estimates may vary, but estimated at about 1500 to 2000 acre-feet.
- The source of supply for these water rights are springs and creeks both in Dry Valley and Warm Springs Valley.
- To date the county has conducted 2 studies, one in 1993 by Harding Lawson Associates, and an ongoing Spring Development study by The Hydrodynamics Group.
- Originally the water rights were intended for export to support growth in Spanish Springs, however, they may now be utilized within the basin.

## Questions

---

## RECLAIMED WATER SYSTEM COMPONENTS

<b>Storage Capacity</b>	<b>Huffaker Reservoir: 4,000.00 ac-ft</b> <b>Fieldcreek Reservoir: 6.0 MG</b> <b>ArrowCreek Tank: 2.1 MG</b>
<b>Pumping Capacity</b>	<b>8,400 gpm from STMWRF</b> <b>2,800 gpm from Fieldcreek Reservoir</b>
<b>Transmission Main Installed</b>	<b>103,000 feet, 19.5 miles</b> <b>Sizes: 6" to 24"</b>
<b>Service Connections</b>	<b>299, including 3 golf courses</b>

## Summary

**Total Committed Water Rights = 17,843.93 AF**

Ground water component = 13,242.02 AF

Truckee River water component = 4601.91 AF

**Total Banked Ground, Truckee River and Tributary**

**Water Rights = 6,017.67** includes 333.00 AF of Steamboat Creek

**Total Available Tributary Rights = 1,325.00 AF**

includes 225.00 AF of Steamboat Creek

**Total Allocated Ground, Truckee River and Tributary**

**Water Rights = 1,977.59 AF**