



Presented by Andrea Robb-Bradick and Michael Hackett

EXHIBIT C-1

Treasures

Document consists of 29 slides.

Entire exhibit provided.

Meeting Date: 03-10-06

Monte Cristo's Castle (proposed) Nevada State Park

Monte Cristo's Castle

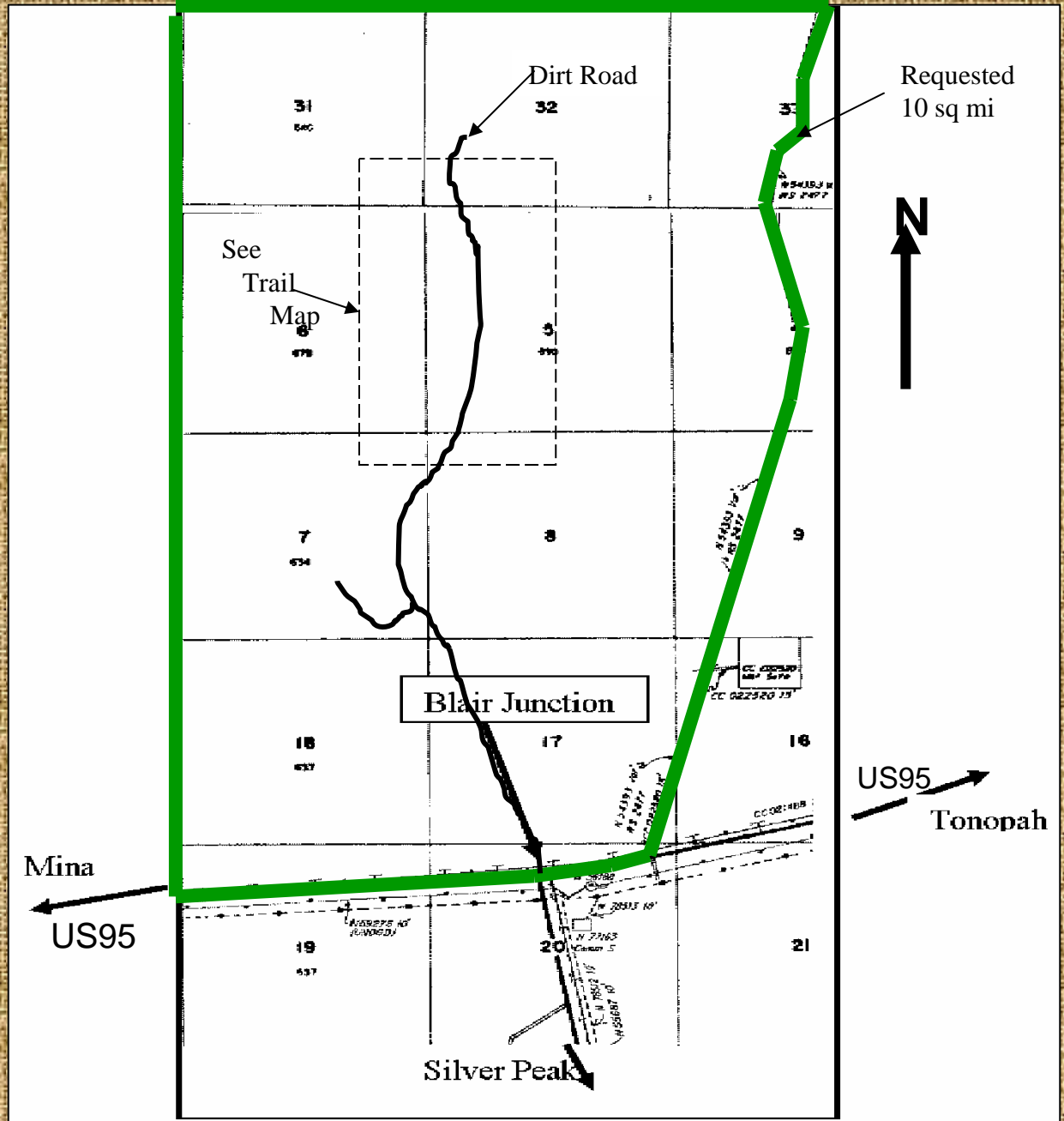
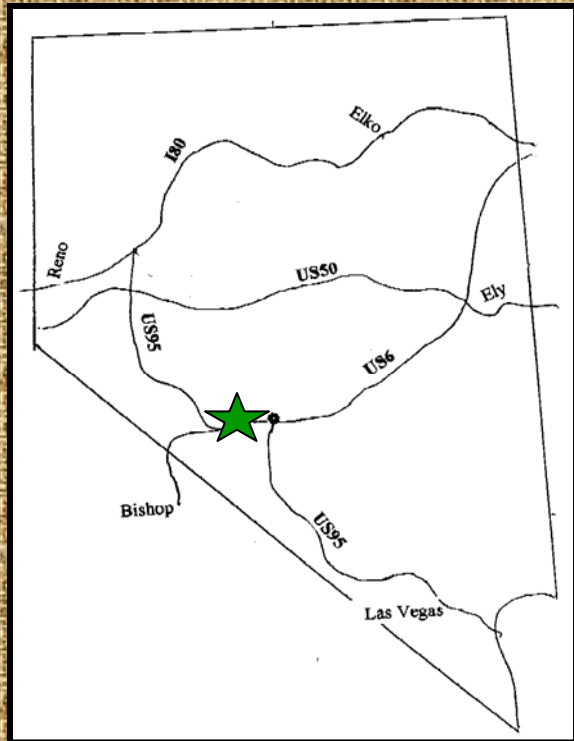
ESMERALDA COUNTY, NEVADA

35 miles north of Tonopah on US Highway 95
at Blair Junction/Silver Peak turnoff

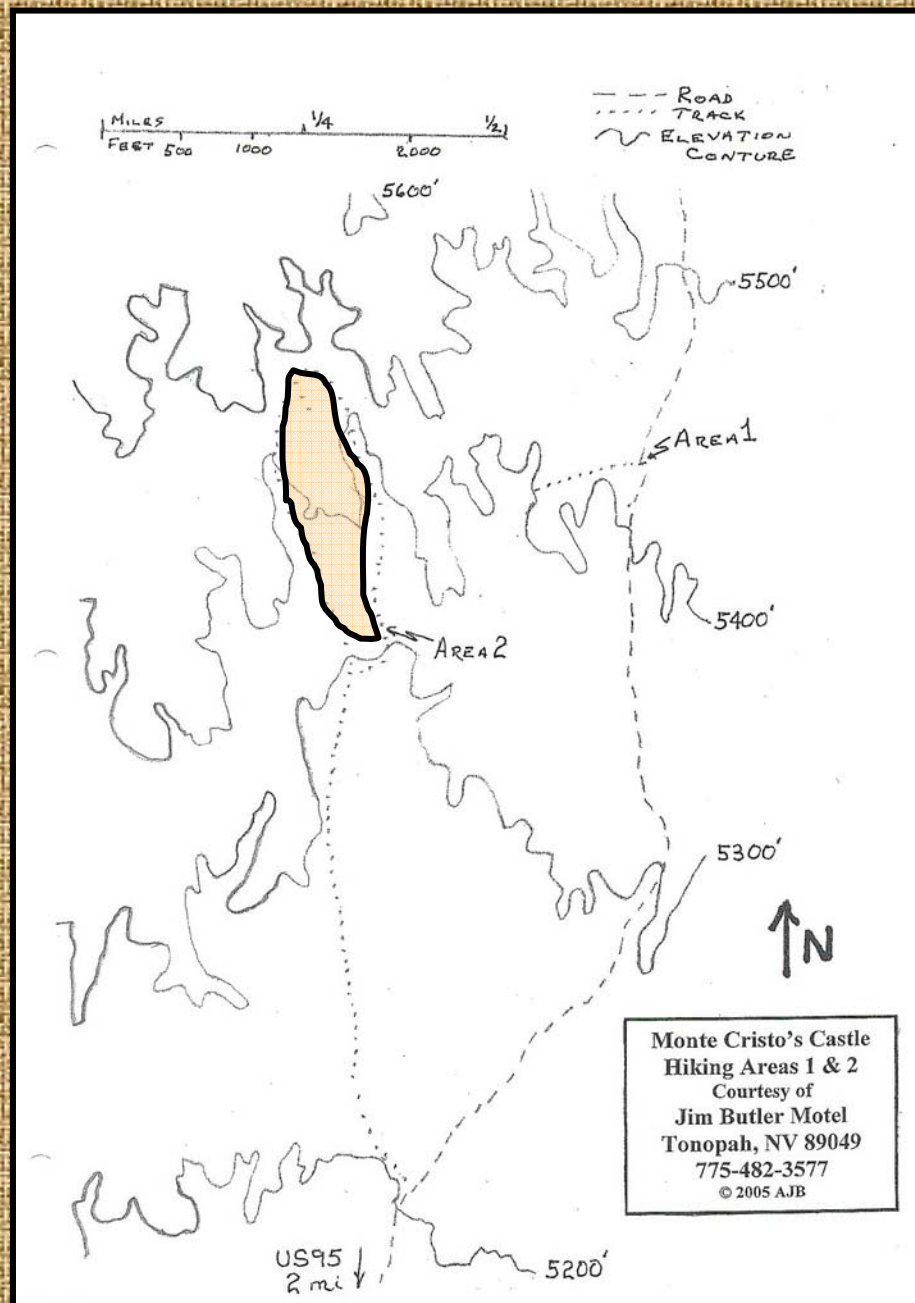
Pictures and information provided by:
Andrea Robb-Bradick, Frank Bradick and Michael Hackett

For more information please contact at 775-851-4426
email: MonteCristo@bradick.reno.nv.us
Mailing address: 13220 Fellowship Way, Reno, NV 89511
www.JimButlerMotel.com

Monte Cristo's Castle (proposed) Nevada State Park

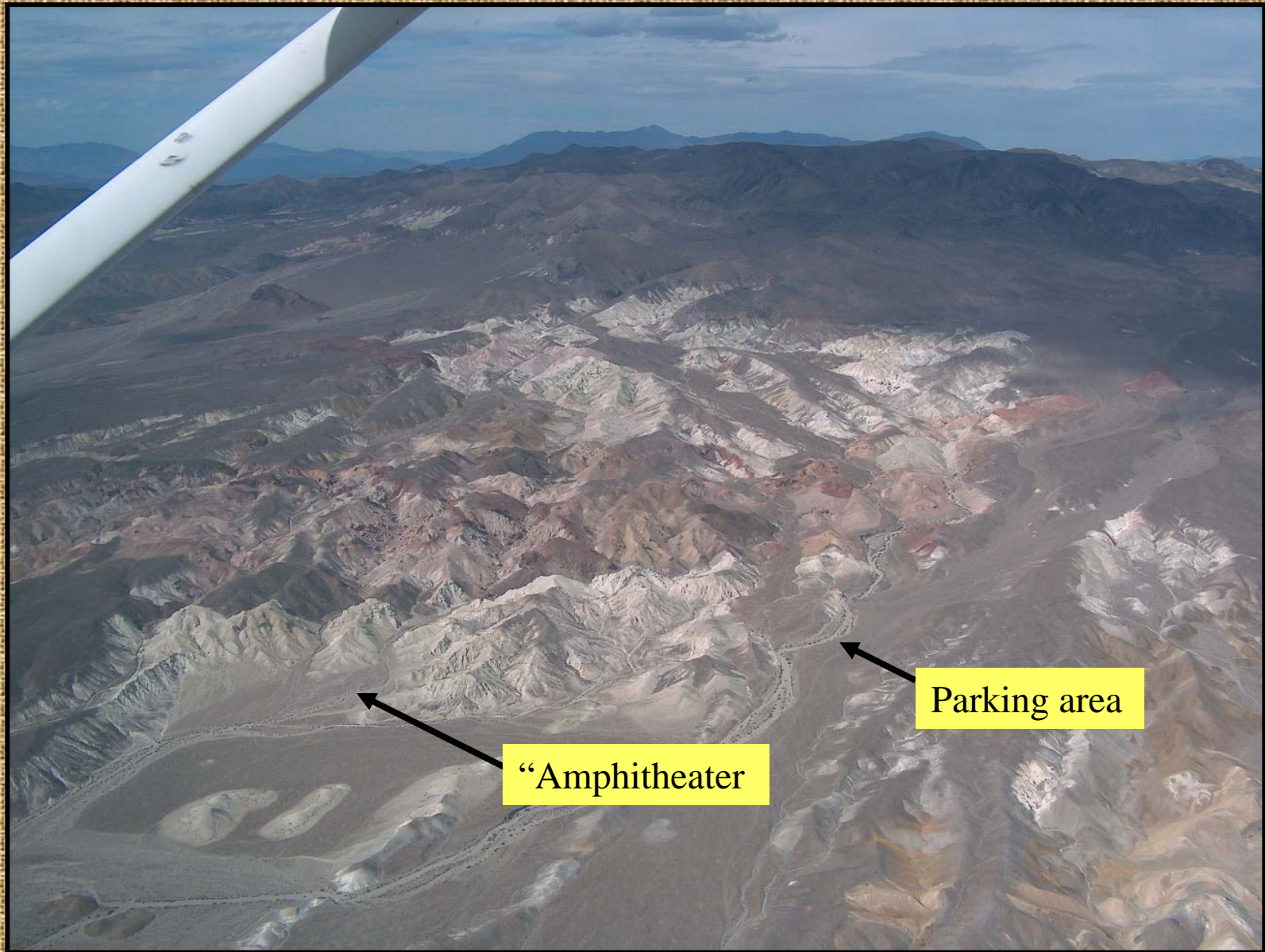


Monte Cristo's Castle (proposed) Nevada State Park



Monte Cristo's Castle (proposed) Nevada State Park

Aerial View from SSE



Monte Cristo's Castle (proposed) Nevada State Park

The Castle Wall



Monte Cristo's Castle (proposed) Nevada State Park

The Far Wall



Monte Cristo's Castle (proposed) Nevada State Park

The Lion



Monte Cristo's Castle (proposed) Nevada State Park

Easter Bunny?



Monte Cristo's Castle (proposed) Nevada State Park

A Horse?



Monte Cristo's Castle (proposed) Nevada State Park

What Is It?



Monte Cristo's Castle (proposed) Nevada State Park



Monte Cristo's Castle (proposed) Nevada State Park

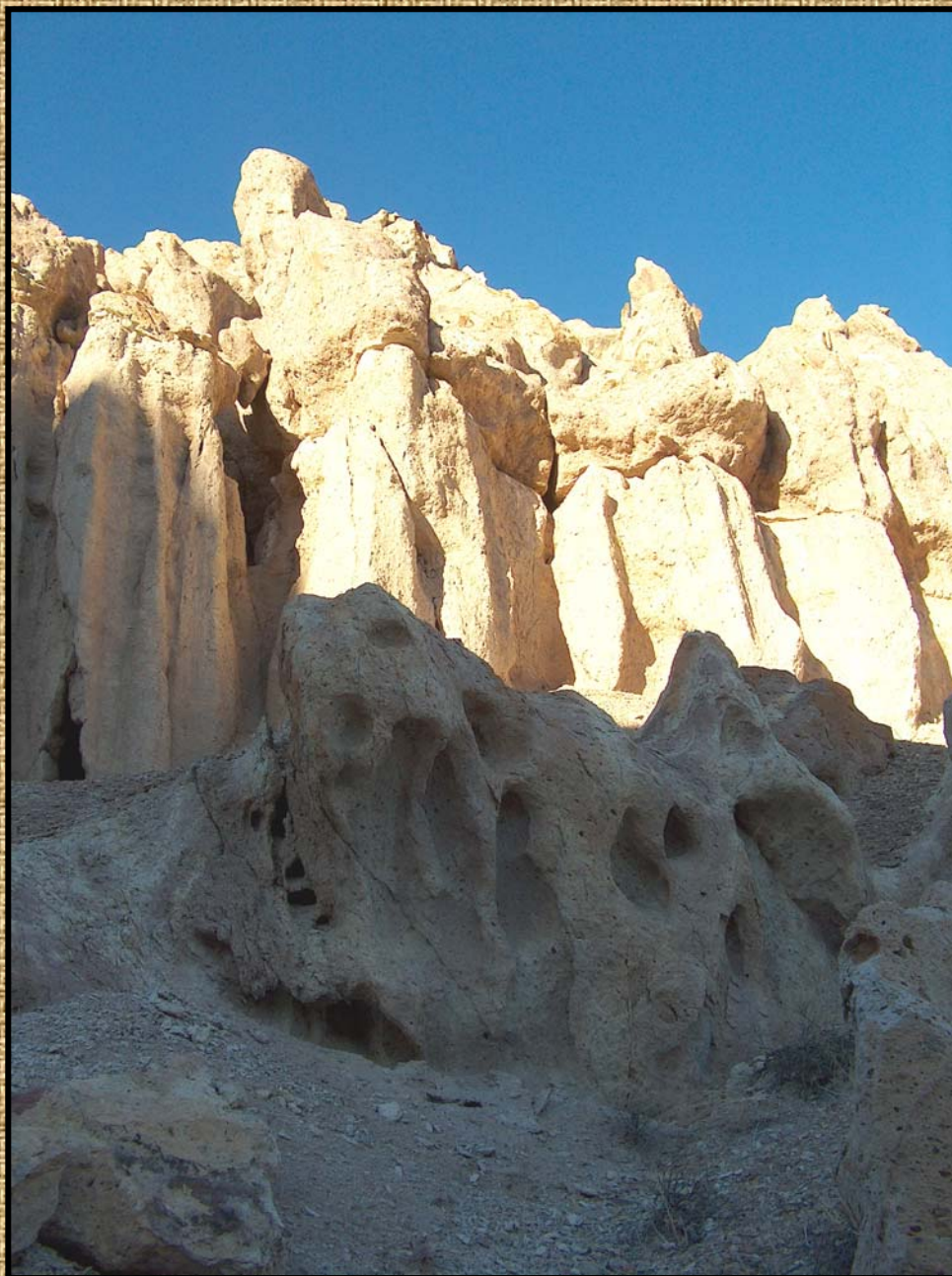


Monte Cristo's Castle (proposed) Nevada State Park

Hole in One or One in Hole?



Monte Cristo's Castle (proposed) Nevada State Park



Monte Cristo's Castle (proposed) Nevada State Park



Monte Cristo's Castle (proposed) Nevada State Park



Monte Cristo's Castle (proposed) Nevada State Park

Big Animals



Monte Cristo's Castle (proposed) Nevada State Park

End of the Day



Monte Cristo's Castle (proposed) Nevada State Park

Nevada State Parks

Of Nevada's 26 state parks:

- 5 state parks in Lincoln County
- 4 state parks within 35 miles of Las Vegas
- 6 state parks within 35 miles of Carson City
- 5 state parks within 25 miles of Panaca
- No state parks in Esmeralda County or within 60 miles of Monte Cristo's Castle

Monte Cristo's Castle (proposed) Nevada State Park

Monte Cristo's Castle

- Average size of Nevada's 26 state parks is 5,333 acres
- Proposed site for state park at Monte Cristo's Castle – 6400 acres (10 sq. mi.)
- 6400 acres is $\frac{1}{4}$ of 1% of Esmeralda County

Monte Cristo's Castle (proposed) Nevada State Park

Why a State Park in Esmeralda Co.?

- It is an economically-disadvantaged county.
- Esmeralda County is 99% owned by Federal Government
- Lack of private land impedes economic development

Monte Cristo's Castle (proposed) Nevada State Park

Why at Monte Cristo's Castle?

- It is a unique, diverse geologic area.
- The area needs protection to preserve its unique geologic features and prevent erosion caused by motor vehicles.
- The area is presently enjoyed for its geology, hiking, photographic and stargazing.
- No active mining claims.

Monte Cristo's Castle (proposed) Nevada State Park

Why at Monte Cristo's Castle?

Surrounding area has many attractions:

- Tonopah Historic Mining Park
- Dry lake beds for land sailing
- Sand dunes for dune buggy enthusiasts
- Hundreds of dirt roads and tracks for off-road enthusiasts
- Toiyabe Crest Trail
- Horse riding trails
- Natural hot springs
- 3 wilderness areas: Arc Dome, Alta Toquima, Table Mountain
- Ghost towns

Monte Cristo's Castle (proposed) Nevada State Park

Economic Impact

Nevada's state parks provide a significant economic impact to state and local economies:

\$84.7 million impact locally

\$131.5 million impact to state

Figures from Nevada Department of State Park's Estimated 2001 Annual Economic Impact of Nevada State Park Visitors on Gross Business Receipts.

Monte Cristo's Castle (proposed) Nevada State Park

Economic Impact

- Park would be economic catalyst for 3-county area: Esmeralda, Mineral and Nye
- Would impact local economies annually by:
 - \$900,000 in retail sales
 - \$582,750 in aggregate personal income
 - \$58,500 in tax receipts
 - \$108,000 in bank deposits

Monte Cristo's Castle (proposed) Nevada State Park

Economic Impact

Economic benefit would also include:

83 new industry-related jobs

105 new households

5 new retail stores

Economic impact statistics based on 27,000 annual visitors and derived from formulas in the Tonopah Century Plan provided by Tom Hudson in association with the Hingston Roach Group and Urban Design Studio.

Monte Cristo's Castle (proposed) Nevada State Park

Support

- Proposal has already earned a lot of support.
- Hundreds of members of the public have signed petitions in support of.
- Support has come from, among others, members of the Legislature, the Governor's Office, the Lieutenant Governor, the State Treasurer, State Parks, Nevada Commission on Tourism.
- Other state agencies, local government and interest groups also support the proposal.

A complete list of supporters and contacts is provided in a separate attachment.

Monte Cristo's Castle (proposed) Nevada State Park

Additional Funding Sources

Financial and In-kind support sources:

- BLM: value of land as matching funds.
- Question 1: Conservation and Resource Protection Grants Program
- Nevada Economic Development Fund
- Recreational Trails Program of FHA
- National Park Service Rivers, Trails and Conservation Assistance Program
- Community Development Block Grants
- Nevada Commission on Tourism

Monte Cristo's Castle (proposed) Nevada State Park