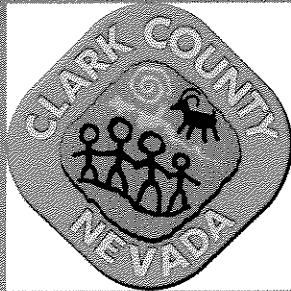


# **Clark County Environmentally Sensitive Lands Advisory Committee Report – January 29, 2004**

Presented to the

## **Subcommittee on Protection of Natural Treasures**

February 10, 2006, Pahrump, Nevada



Rob Mrowka  
Manager, Environmental Division  
Department of Air Quality and  
Environmental Management

### **The Task:**

On December 4, 2002, the Board established a broad based, 18-member, Environmentally Sensitive Lands (ESL) Advisory Committee. The Board asked the Committee for recommendations on the following areas:

- **Developing criteria to identify potentially sensitive lands;**
- **Establishing priorities to protect those lands;**
- **Advising the County on appropriate means of protecting those lands.**

The Committee held 14 meetings between December 2002 and January 2004 and was supported by staff from the Departments of Comprehensive Planning and Air Quality and Environmental Management.

EXHIBIT F Treasures

Document consists of 7 pages.

- ☒ Entire document provided.
- ☐ A copy of the complete document is available through the Research Library (775/684-6827) or e-mail [library@lcb.state.nv.us](mailto:library@lcb.state.nv.us).

Meeting Date 2/10/067

### **Environmentally Sensitive Lands Advisory Committee:**

Laura Bonich, Urban Land Institute  
Jane Feldman, Sierra Club  
Jeremy Garncarz, Friends of Nevada Wilderness  
Jennifer Haley, Federal Land Agencies  
Julie Haworth, Southern Nevada Homebuilders Assc.  
Ame Hellmen, The Nature Conservancy  
Hermi Hiatt, Friends of Nevada Wilderness  
Mark Jones, Engineering Community  
Rob Levvant, Southern Nevada Homebuilders Assc.  
Calvin Meyers, Tribal Representative  
Alan O'Neill, Outside Las Vegas Foundation  
Barbara Orcutt, Citizen at Large  
Rich Priesing, Development Community  
Josh Reid, Citizen at Large  
Jeff Rhoads, Citizen at Large  
Pauline Van Betten, Citizens Advisory Committee  
Tom Warden, Howard Hughes  
Fredrick Wilkening, Union Representative  
Colleen Wilson-Pappa, Southern Nevada Homebuilders Assc.

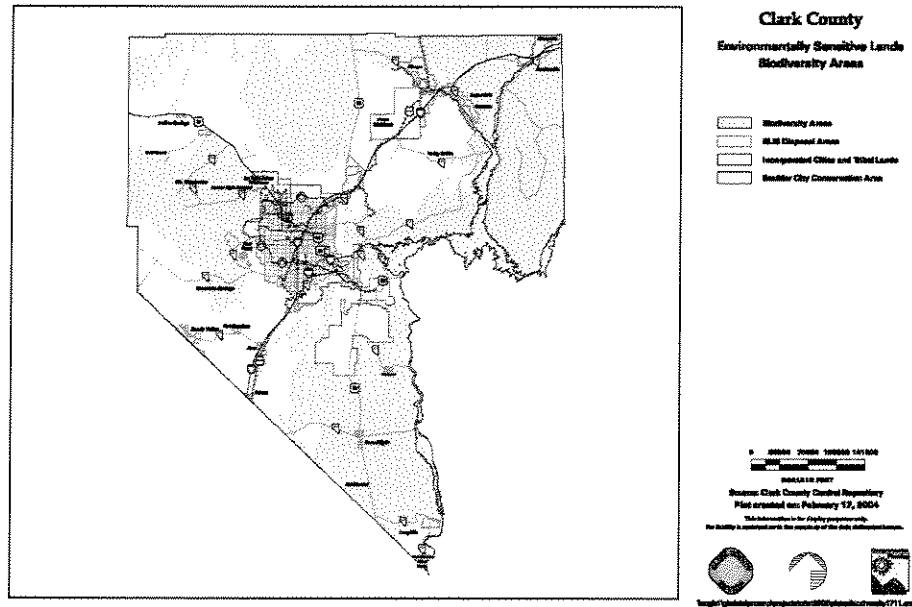
### ***Definition of Environmentally Sensitive Lands in Clark County:***

The components that, taken together, define Environmentally Sensitive Lands are:

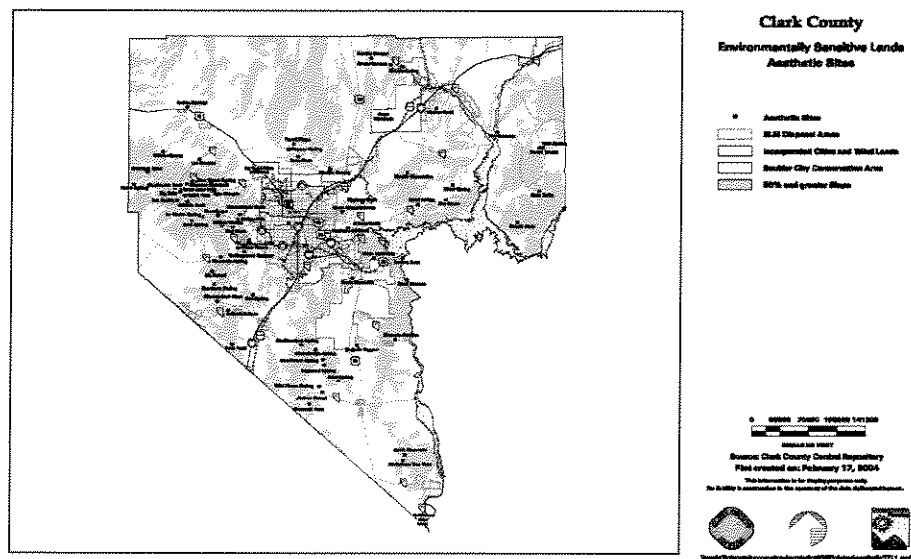
- **Ecosystem level Biodiversity;**
- **Aesthetic Areas including scenic roads & byways, slopes greater than 50%, significant geologic features and scenic points;**
- **Administrative Areas specifically designated for environmental and recreational purposes; and**
- **Cultural and Historic areas.**

**\*\* Applied only to areas outside cities, tribal lands and current disposal areas.**

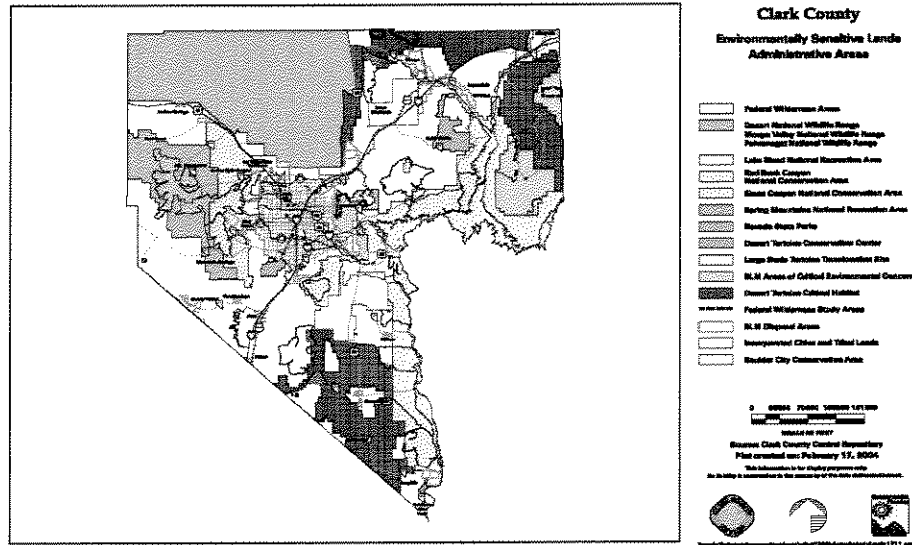
**Biodiversity Layer** - Based on The Nature Conservancy's ecoregional assessment: "Ecoregion-based Conservation in the Mojave Desert" (8/2001)



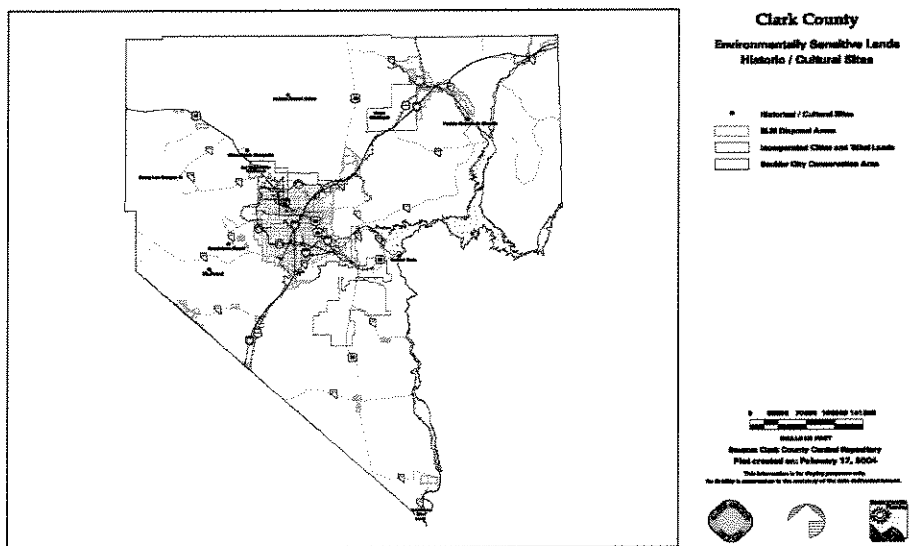
**Aesthetics Layer** - Scenic roads, slopes greater than 50%, significant geological features (back drop to key viewing areas), scenic points and features.



**Administrative areas** - Lands specifically designated for environmental or recreational purposes by local, state or federal agencies.

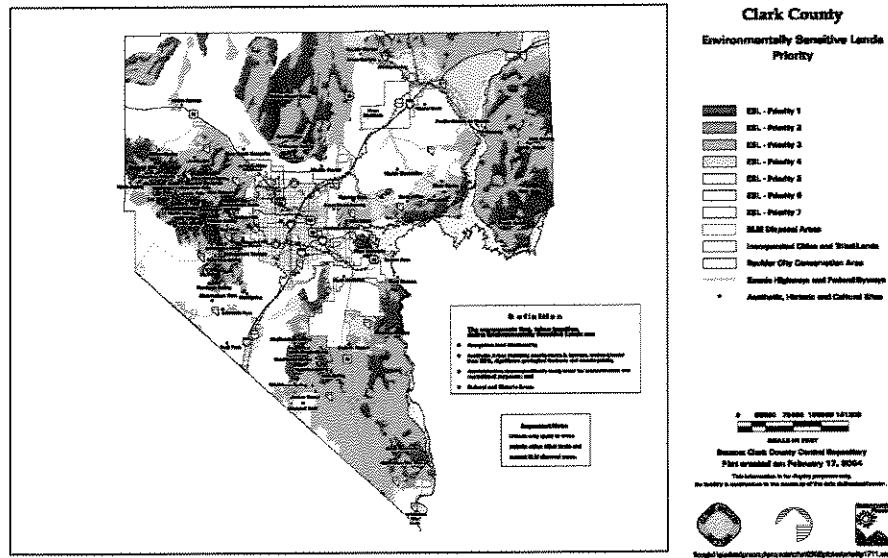


**Cultural & Historic Areas** - listed on the National Register of Historic Places, whether mapped or not, and future additions to the Register.





## Clark County Environmentally Sensitive Lands (by Priorities 1-7)



## ESL Priorities and Acreages

Priority	Layers	Acreage
1	Biodiversity, Aesthetic, Administrative	1,190,550
2	Biodiversity & Aesthetic	97,225
3	Biodiversity & Administrative	1,314,893
4	Biodiversity	291,374
5	Aesthetic & Administrative	225,756
6	Aesthetic	257,477
7	Administrative	463,453
Total ESL (Priorities 1-7)		3,840,728
Total County in assessment area		5,158,225
Non-ESL		1,317,498

## Threats to Environmentally Sensitive Lands

- Urban expansion
- Increased recreational pressures
- Ill-placed ridge top developments
- Non-native invasive plant and animal species
- Fragmentation of landscapes and wildlife travel corridors
- Ill-placed and inappropriate water developments
- Inappropriate landscaping, colors and design
- Vandalism and theft of cultural and historic sites and objects
- Inappropriate off-road vehicle use
- Changes in federal land designations resulting in a less protected status.

for instance, the opening of Forest Service Roadless Areas to development and determination by agencies not to provide Wilderness status to sensitive, eligible lands.

## **Protecting Environmentally Sensitive Lands**

- Appropriate land use and zoning (Public and private lands)
- Retention of lands in Public ownership (Public lands)
- Appropriate Administrative Land Designations (Public lands)
- Purchases, Leases and Conservation Easements (Private lands)
- Designation of appropriate areas for OHV use
- Programs to combat invasive species
- Sensitive water use and development

Questions?

