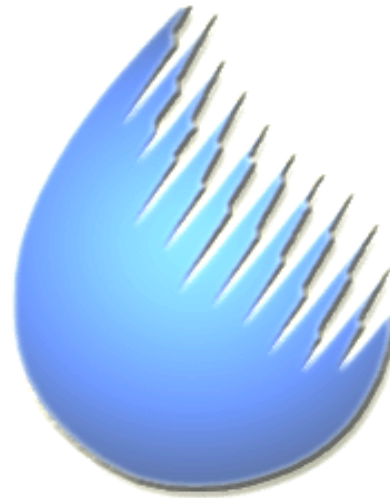




# Southern Nevada Water Authority



## **Legislative Committee to Study the Use, Management and Allocation of Water (SCR 26)**

**May 24, 2006**

EXHIBIT D - WATER RESOURCES Document consists of 24 slides.

☒ Entire document provided.

Meeting Date: May 24, 2006



# Integrated Water Planning Advisory Committee

- **Formed by the SNWA Board in June 2004**
- **Assessed alternatives and developed general recommendations concerning the integration of in-state water resources into the water planning and management activities of Southern Nevada**
- **Developed 22 recommendations in four categories:**
  - Conservation
  - Resource Development
  - Resource Management
  - Funding
- **Presented recommendations to the SNWA Board of Directors in November 2006 for consideration and implementation**





# SNWA Conservation Initiatives

## IWPAC Conservation Recommendations:

- **Decrease demand from 272 GPCD to 250 GPCD by 2010 and to 245 GPCD by 2035**
  - Make permanent the major demand reduction tools in the SNWA Drought Plan
  - Ensure that water rates keep pace with inflation
  - Maintain / exceed 2004 participation in WSL Program
- **Promote water conservation more aggressively and regulate water use through methods such as the reduction of turf**
- **Assess conservation levels annually and investigate potential for further GPCD reduction**





# SNWA Conservation Initiatives

**On April 20, 2006, the SNWA Board:**

- **Made the Water Smart Landscapes incentive \$1 per square foot for all conversions, regardless of total square footage**
- **Removed the \$300,000 limit on rebates**
- **Directed staff to pursue an alternative funding mechanism to assist schools and government with landscape conversions**
- **Directed staff to work with member agencies to make the Drought Plan's major demand reduction tools permanent**





# Seven States Proposal

- Submitted in Feb. 2006 for inclusion in the environmental process
- Consensus document recommended by all seven states
- First comprehensive proposal for the operation of the entire Colorado River system, includes provisions for
  - Coordinated operation of lakes Powell & Mead
  - Intentionally Created Surpluses, Extraordinary Conservation Projects & System Efficiency Projects
  - Non-Colorado River System Water Exchanges
  - Tributary Conservation
- The states have agreed to allow Nevada to fund the All American Canal Drop 2 Reservoir Project, which would allow Nevada to take about 280,000 to 300,000 acre-feet of ICS credits



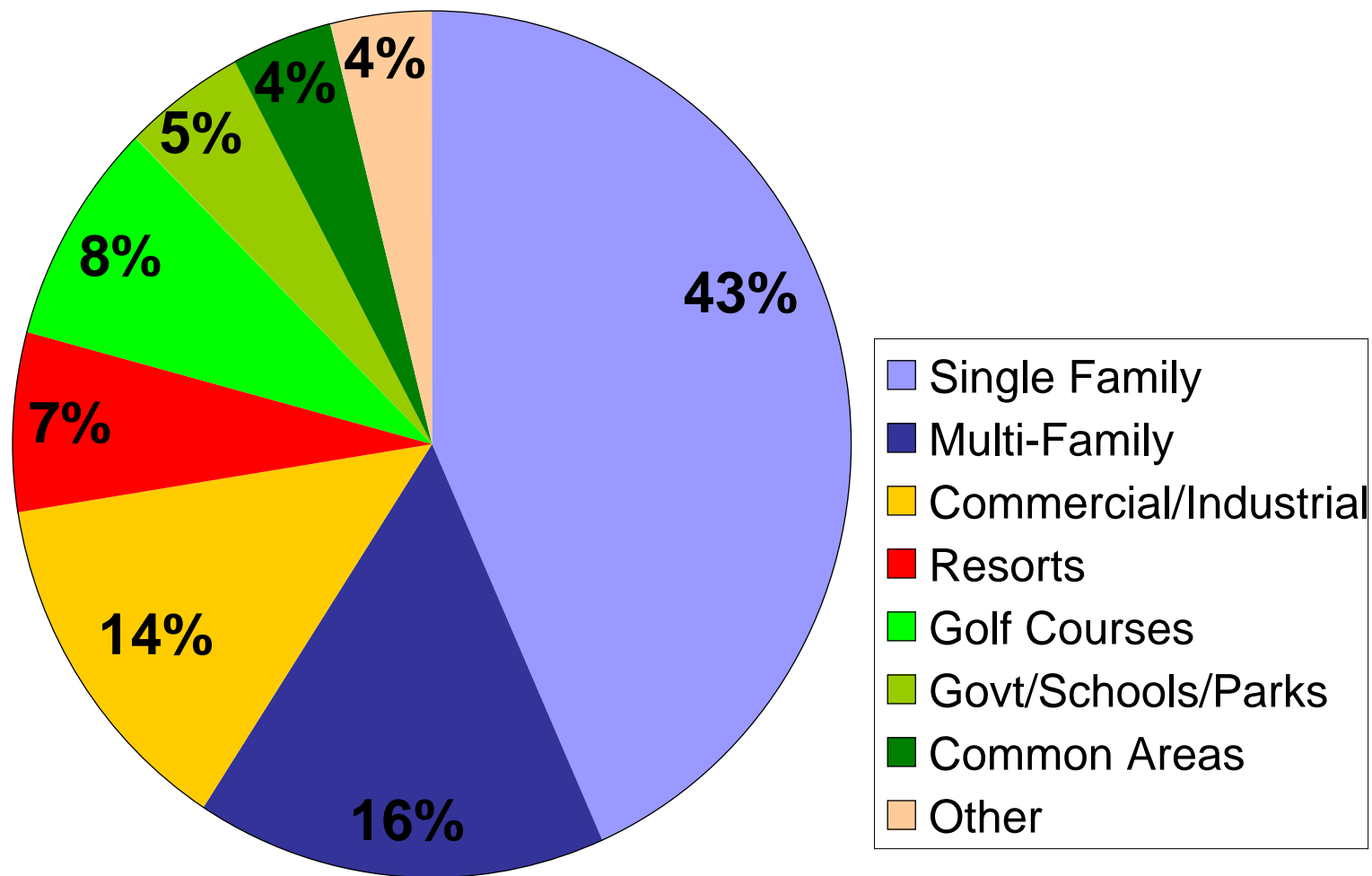


# White Pine County Negotiations

- **In 2006, the White Pine County Commission established a team to meet with SNWA to discuss its groundwater development project**
- **Development and approval of two documents are pending:**
  - Memorandum of Understanding
  - Cooperative Agreement
- **The proposed Cooperative Agreement addresses three key areas:**
  - Establishment of an Environmental Protection Plan
  - Establishment of a Management Committee comprised of SNWA & White Pine County representatives
  - Reservation of water and financial considerations
- **On May 10, 2006, the White Pine County Commission voted to postpone its 5/19 meeting with SNWA in order to hold a public forum to discuss the draft proposal**



# Where's the Water Used?

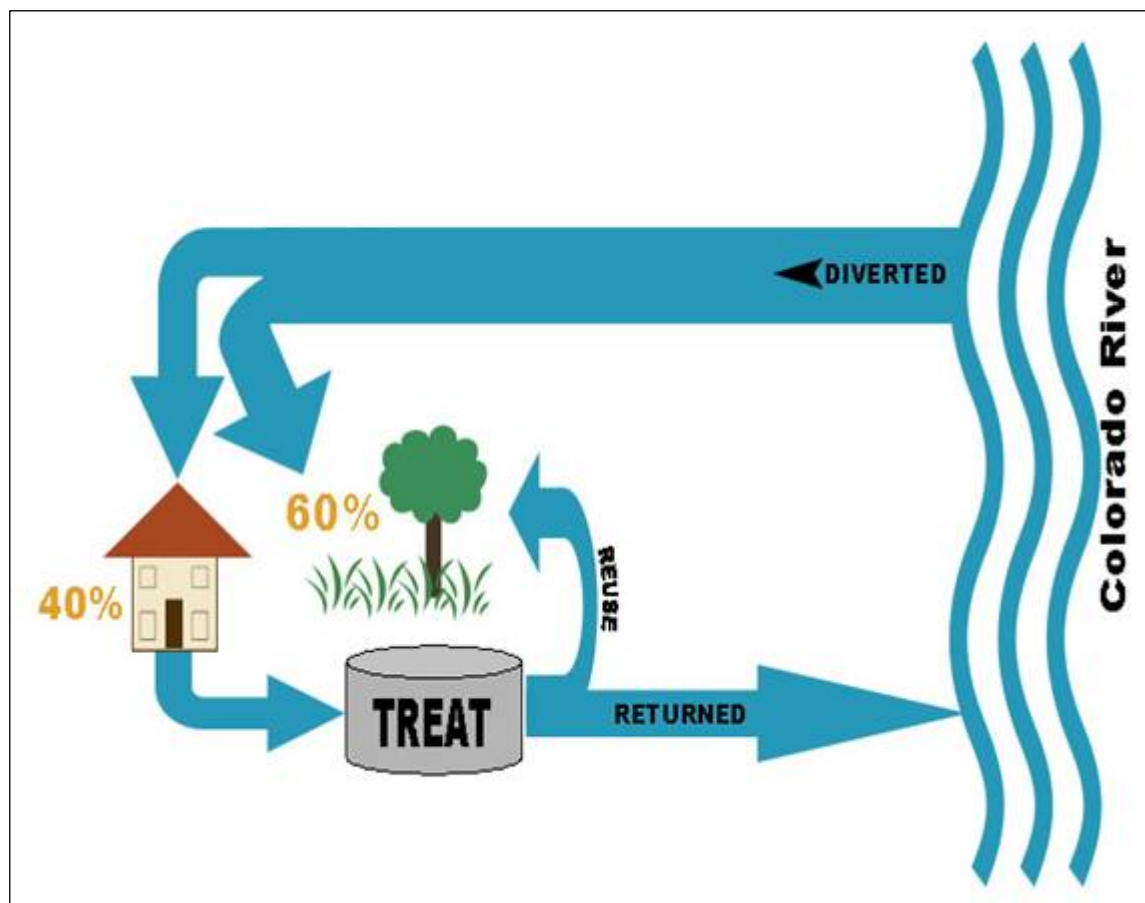


2003 metered water use from all SNWA purveyors of all potable and non-potable water



# Return Flow Credits

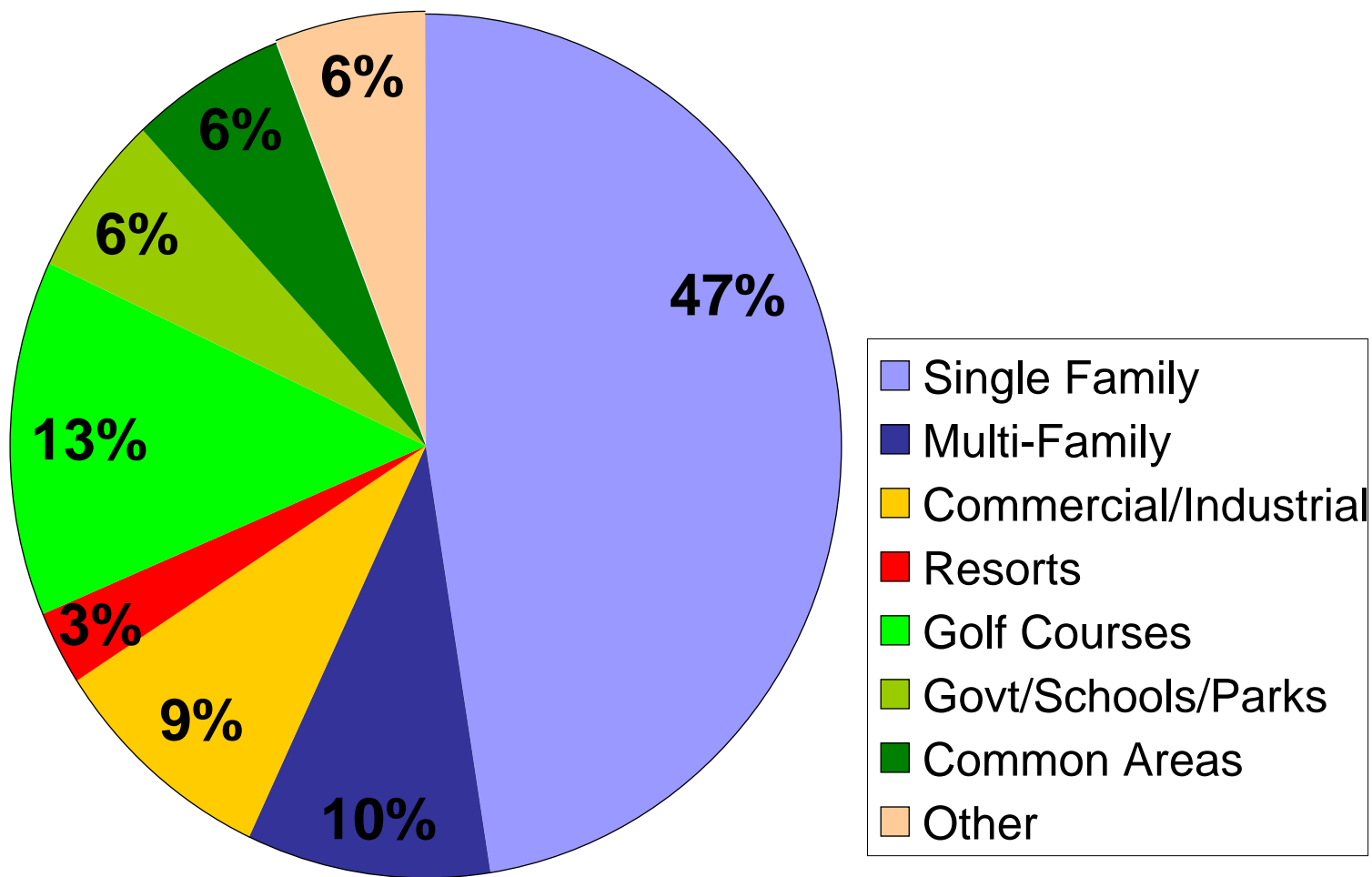
Colorado River water is consumed primarily by landscaping and cooling







# Where's It Used Outdoors?





# Overview

**Conservation in Southern Nevada is influenced by:**

- **Policy**
- **Pricing**
- **Incentives**
- **Education and Outreach**



# Demand Reduction Tools

- **Development codes (commercial & residential)**
  - Indoor fixtures (for example, low flow devices)
  - Outdoor landscaping, misting systems and fountains
- **Time-of-day and day-of-week watering restrictions**
- **Water budgets for golf courses**
- **Water efficiency plans for resorts**
- **Penalties for wasting water**



Southern Nevada  
Water Authority

Watering  
Group

## DROUGHT WATERING RESTRICTIONS

All water users have been assigned a watering group. **Mandatory** restrictions mean you may only run sprinklers on your group's allowed watering day(s). To locate your group, check your bill, visit [snwa.com](http://snwa.com) or call your water provider.

My assigned  
group:

\_\_\_\_\_

### Winter

November - February

### Spring / Fall

March - April / September - October

### Summer

May - August

**A**

Monday

Monday, Wednesday, Friday

**Any day**

**B**

Tuesday

Tuesday, Thursday, Saturday

**Any day**

**C**

Wednesday

Monday, Wednesday, Friday

**Any day**

**D**

Thursday

Tuesday, Thursday, Saturday

**Any day**

**E**

Friday

Monday, Wednesday, Friday

**Any day**

**F**

Saturday

Tuesday, Thursday, Saturday

**Any day**

For watering instructions, see inside panel.



# Golf Course Water Budgets

**Golf Courses are required to adhere to a water budget and submit water use reduction plans.**



**Before Conversion**



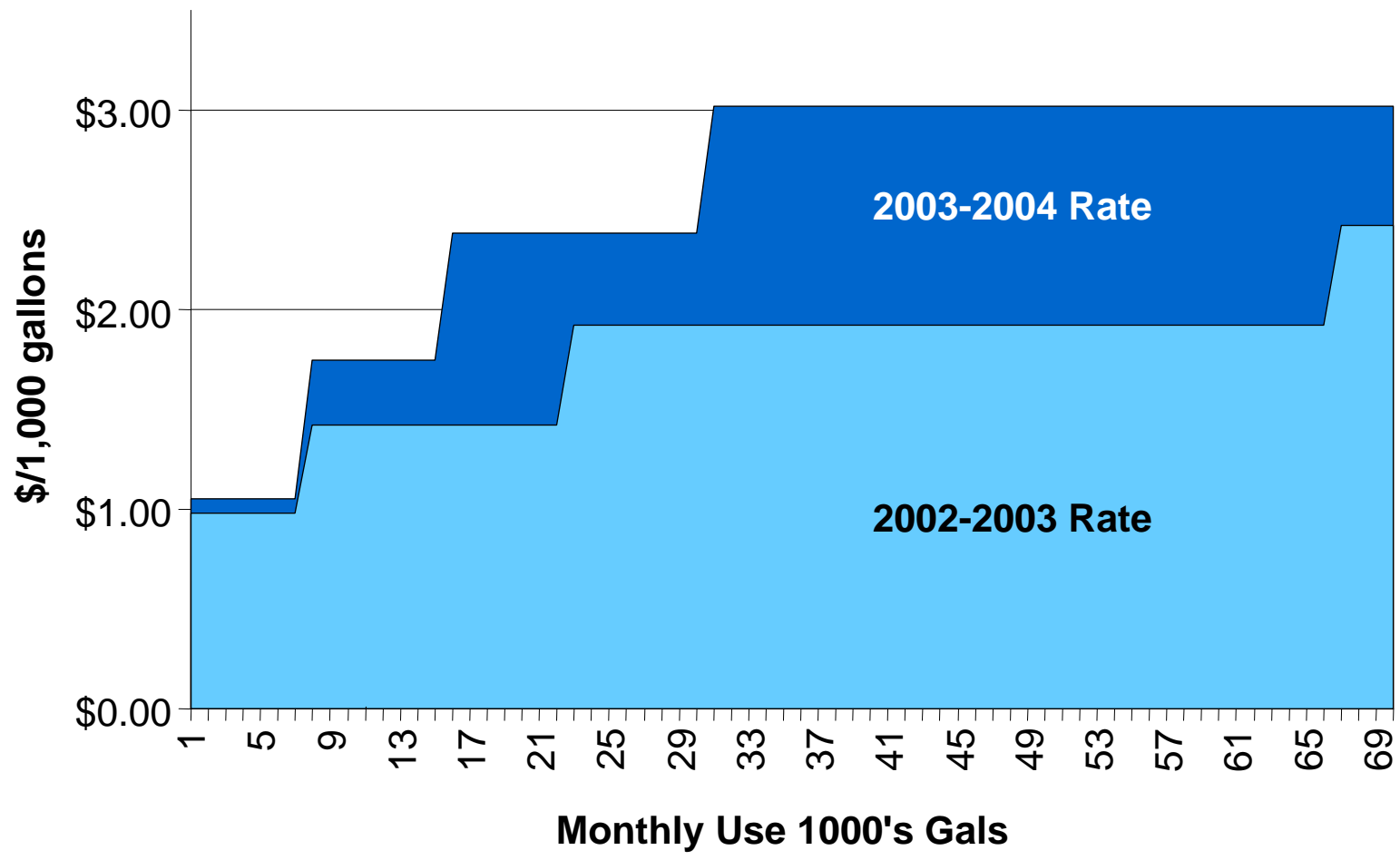
**After Conversion**



# Pricing

- **SNWA member agencies utilize tiered rate structures.**
- **These structures target high water users, while protecting the rates for the smallest users.**
- **The lowest tier represents what most customers use indoors.**

# Tiered Pricing Encourages Conservation

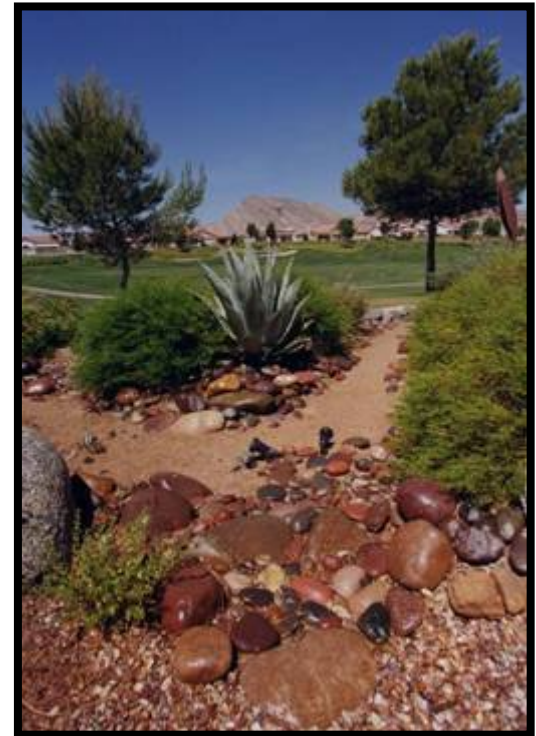




# Incentive Programs

**Southern Nevada recycles nearly every drop of water that is used indoors. That's why SNWA conservation programs focus on outdoor water use.**

- **Water Smart Landscapes**
- **Smart Clock Coupon**
- **Rain Sensor Coupon**
- **Pool Cover Coupon**
- **Water Efficient Technologies**
- **Water Smart Car Wash**
- **Water Smart Contractor**
- **Water Smart Home**







# Water Smart Landscapes Program

- **Instituted in 1999**
- **Provides rebates to customers that replace turf with water-smart landscaping**
- **Over 70 million square-feet converted since program inception**
- **Over 3.8 billion gallons saved annually**



# Water Smart Landscapes Program

**Since 1999, the equivalent of over  
1,200 football fields of decorative turf  
have been converted**

**Before Conversion**



**After Conversion**





# Water Smart Landscapes Program



**Since the program's inception, the Southern Nevada Water Authority has rebated about \$56 million**



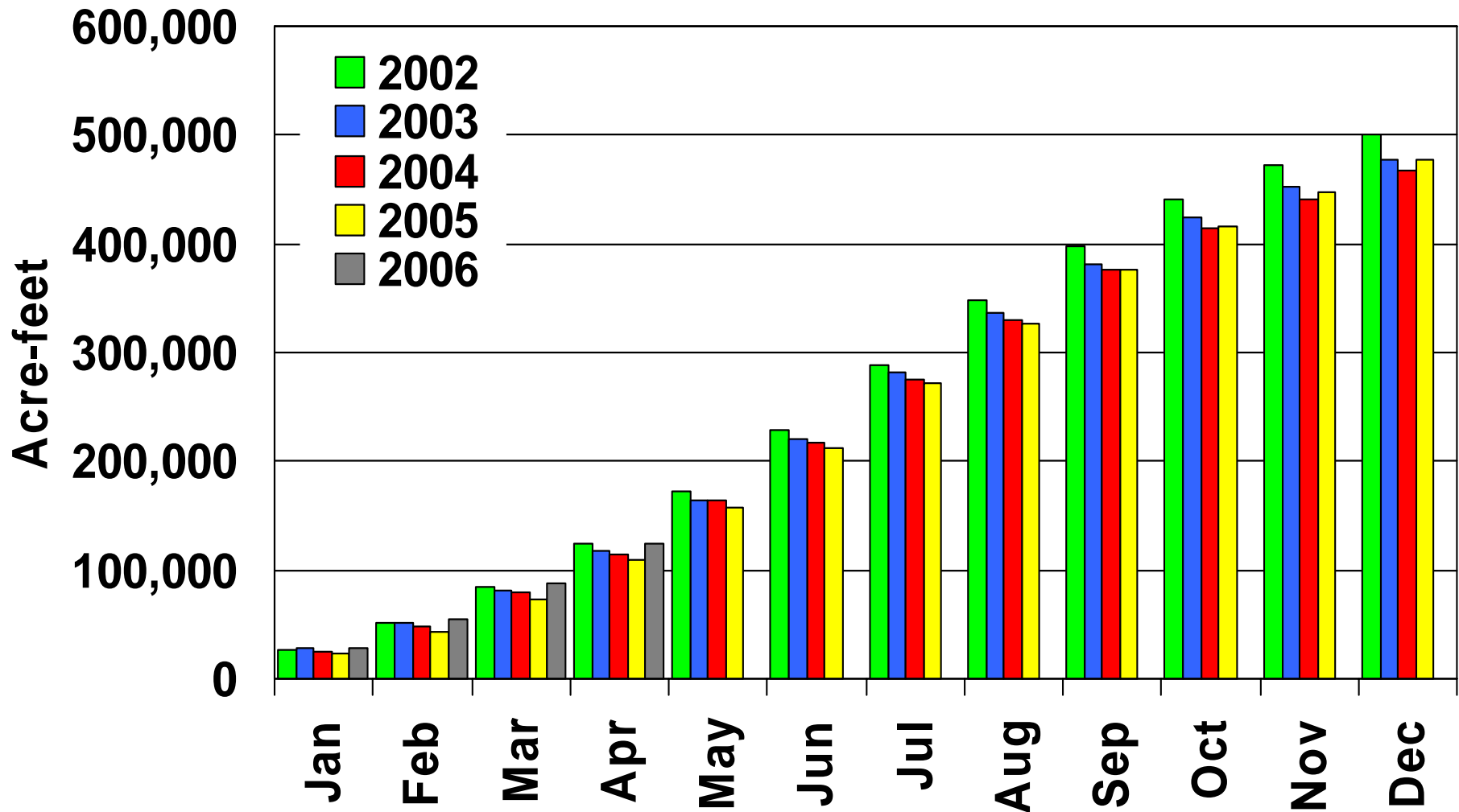
# Education and Outreach

- Advertising and media
- Speaker's Bureau
- Helpline (258-SAVE)
- Public events
- SNWA.com
- Youth programs
- Demonstration gardens





# Comparison of SNWA Cumulative Water Use (2002 to 2006)

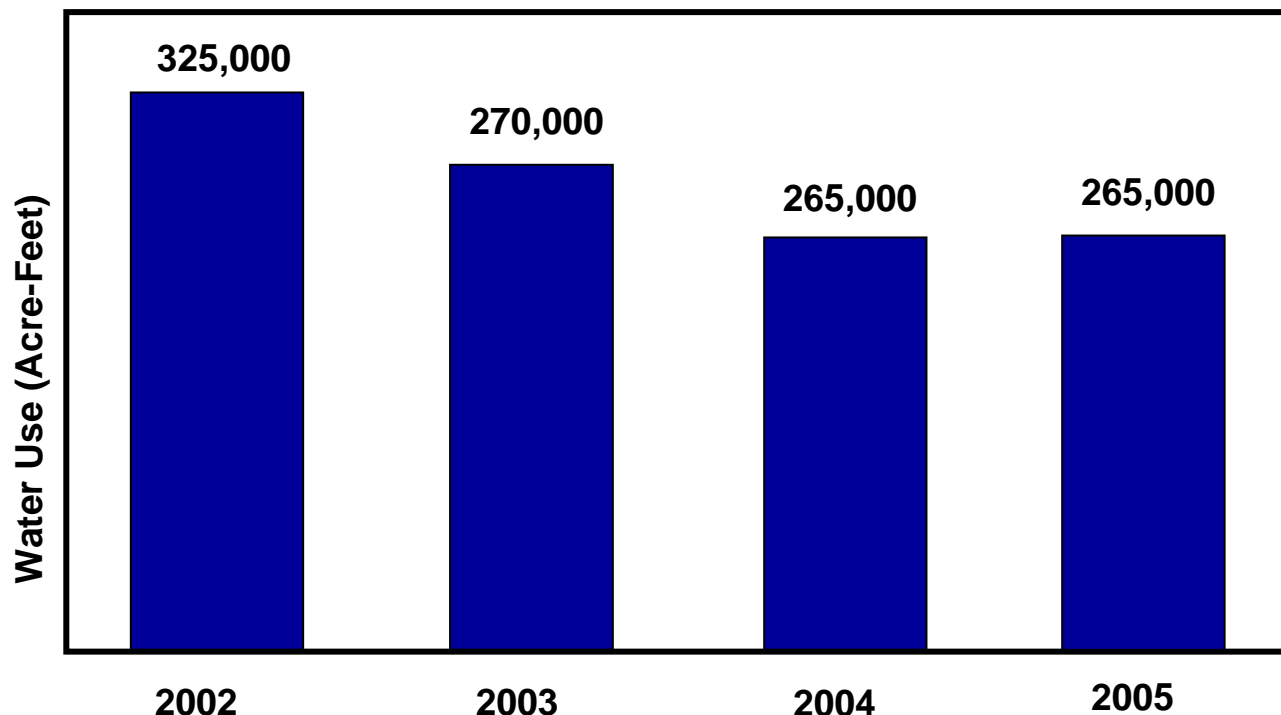




# Water Conservation & Drought Response

**Southern Nevada has made significant conservation gains.**

Colorado River Consumptive Use



**Water use decreased by an estimated 20 billion gallons between 2002 and 2005, despite the addition of nearly 250,000 new residents and 38 million annual visitors.**



# The Bottom Line

**Conservation will continue  
to play a significant role  
in water management activities  
for Southern Nevada.**

