



Nevada Department of Corrections

**Presentation to the  
Advisory Commission on the  
Administration of Justice**

**March 23, 2016**

*Scott K. Sisco, Deputy Director Support Services  
Brian Connett, Acting Deputy Director Programs*



# Nevada Department of Corrections

*The Advisory Commission on the Administration of Justice  
requested a presentation from the Nevada Department of Corrections  
to cover the following subjects:*

1. The Number of Inmates by Category of Offense (*slides 3–5*)
2. The Number of Inmates by Length of Stay (*slide 6*)
3. Inmate Medical Issues and Aging Inmate Population (*slides 7–16*)
4. Staffing and Budgetary Resources of the NDOC (*slides 17–18*)
5. Inmates on Supervision Outside of Prison Facilities (*slide 19*)
6. Inmate Programs and Number of Inmates Participating in Programs (*slides 20–24*)
7. Relationship Between the NDOC and Educational Facilities (*slides 25–26*)
8. Status Report on Re-Entry Programs and Qualification Requirements (*slides 27–33*)
9. Relationship with the DMV on Providing Offender Identification Cards (*slide 34*)
10. Overview of Offender Management System and Time Credits (*slide 35–46*)



# Nevada Department of Corrections

## Number of Inmates by Category of Offense

### NDOC Total Population (Institutional and Non-Institutional)

Offense Group	Total Inmates (Institutional, Escapees, Residential Confinement, and Out-of-State Custody)
Category A	3,598
Category B	7,603
Category C	1,469
Category D	731
Category E	269
Unknown <i>(sentence structure from JOC not entered into OSM yet – typically done within first couple days from entering NDOC intake facility)</i>	21
Total	13,692

Note: One Offense Group per inmate with the group being determined by the most severe offense being served by an inmate in the current booking.  
NDOC Total Population (Institutional and Non-Institutional) as of 12/31/2015.



# Nevada Department of Corrections

## Number of Inmates by Category of Offense (Continued)

### NDOC Total Population (Institutional and Non-Institutional)

Offense Group	Total Inmates (Institutional, Escapees, Residential Confinement, and Out-of-State Custody)
Drug	1,851
DUI	419
Other	459
Property	2,451
Sex	2,407
Violence	6,105
Total	13,692

Note: One Offense Group per inmate with the group being determined by the most severe offense being served by an inmate in the current booking.  
NDOC Total Population (Institutional and Non-Institutional) as of 12/31/2015.



# Nevada Department of Corrections

## Number of Inmates by Category of Offense (Continued) Custody Distribution

Custody <sup>1</sup>	Minimum	Medium	Close	Maximum	Total
Female	264	757	169	0	1,190
Male	1,728	6,867	3,220	407	12,223
Total	1,993	7,625	3,388	407	13,413
% of Total	14.86%	56.85%	25.26%	3.03%	100.00%

Inclusive of offenders whose custody is unassigned. Unassigned is grouped with close custody.  
Total population excludes escapees, residential confinement, and out-of-state custody inmates.



# Nevada Department of Corrections

## Number of Inmates by Length of Stay Total Population – 12/31/2015

Sentence Length <sup>1</sup>	Total	Percent of Total
Less than 1 Year	112	.82%
1 to 2 Years	808	5.90%
3 to 5 Years	3,172	23.17%
6 to 10 Years	2,453	17.92%
11 to 15 Years	1,433	10.47%
16 to 20 Years	1,097	8.01%
More than 20 Years	1,649	12.04%
Life with Parole	2,325	16.98%
Life with out Parole	561	4.10%
Death	82	.59%
Total	13,692	100.00%

<sup>1</sup> Note: One entry per inmate with the longest sentence the inmate is currently serving time for determining the length bracket.



# Nevada Department of Corrections

## Inmate Medical Issues and Aging Inmate Population

	FY07	FY08	FY09	FY10	FY11	FY12	FY13	FY14	FY15	FY16 (YTD)
Inmate Population 55 & older	7.7%	8.2%	8.6%	8.9%	9.4%	10.1%	10.8%	11.8%	12.6%	12.4%

NDOC average inmate population 55 and older for FY07 through FY11 = 8.5%

National average inmate population 55 and older for 2007 – 2011 = 7.1%

Source: Pew Report – “State Prison Health Care Spending” July 2014



# Nevada Department of Corrections

## Inmate Medical Issues and Aging Inmate Population

Utilization of Outside Medical Services by Inmates 55 and Older for FY15 – FY16 (YTD)

Top 4 Outside Medical Expense Categories by \$ Spent	FY 15		FY 16 YTD	
	% of Total Outside Medical Expense	% Utilized by 55+	% of Total Outside Medical Expense	% Utilized by 55+
Onsite Clinics Conducted by Outside Specialists	25.6%	23.3%	24.3%	22.2%
Emergency Room	18.2%	15.7%	12.8%	24.5%
Outpatient Hospital	16.2%	39.3%	19.5%	30.3%
Same Day Surgery Center	14.2%	29.8%	16.3%	47.3%





# Nevada Department of Corrections

## Inmate Medical Issues and Aging Inmate Population

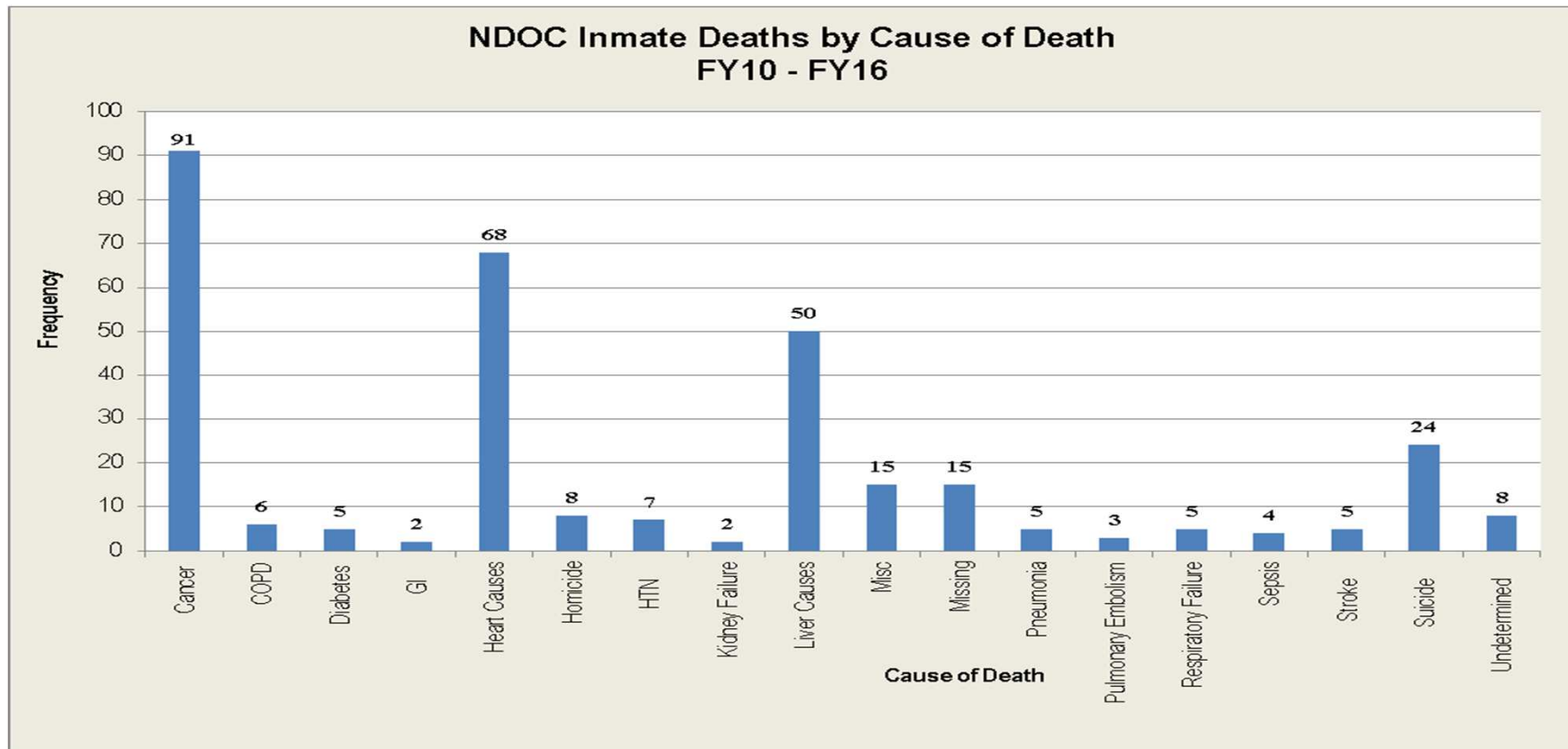
Utilization of Outside Medical Services by Inmates 55 and Older for FY15 – FY16 (YTD)

	FY15			FY16 (YTD)		
Inpatient Hospital Utilization based on Admissions and Length of Stay. Note: Cost figures are not available since inpatient hospital stays are now paid directly by Medicaid	Total Amount	Amount by Inmates aged 55+	% Utilized by aged 55+	Total Amount	Amount by Inmates aged 55+	% Utilized by aged 55+
Admissions	294	96	32.7%	83	27	32.5%
Length of Stay (Days)	2,632	991	37.7%	790	200	25.3%



# Nevada Department of Corrections

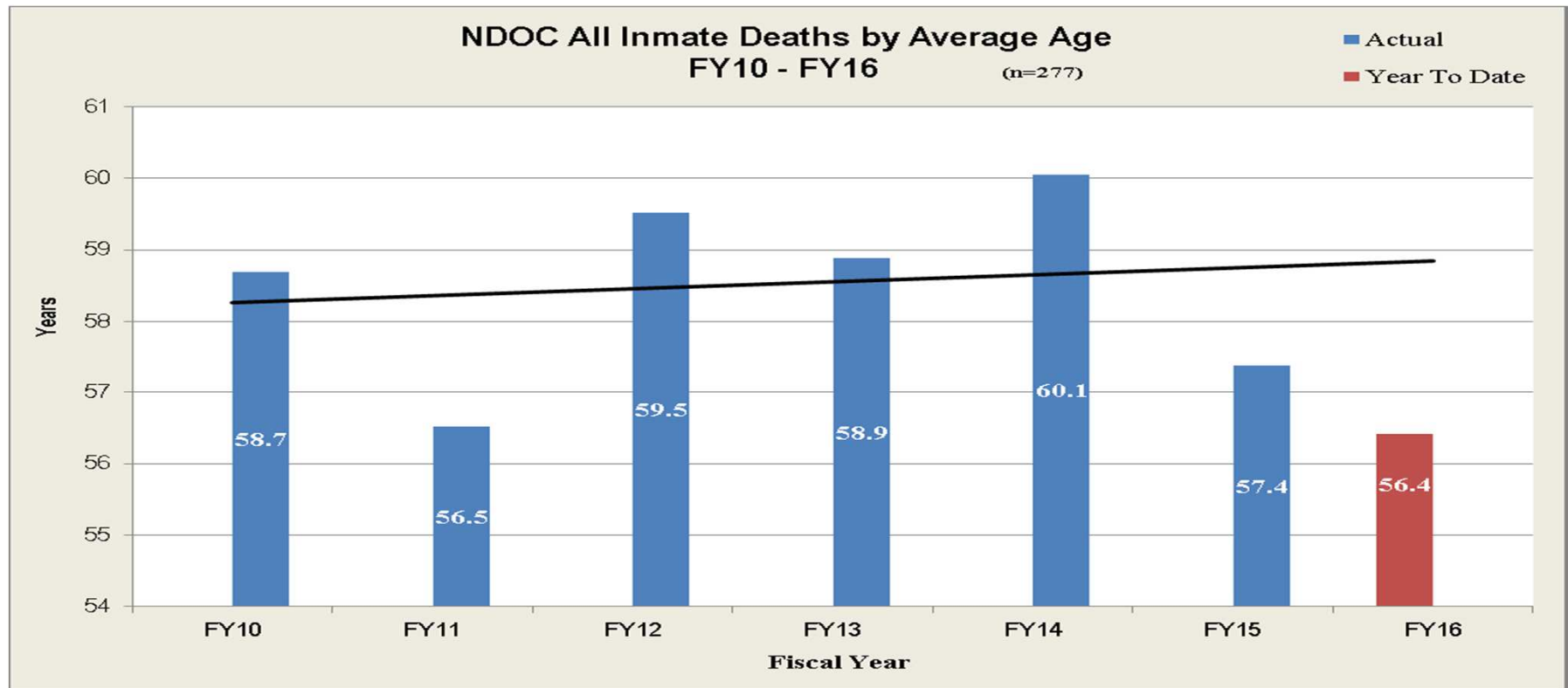
## Inmate Medical Issues and Aging Inmate Population





# Nevada Department of Corrections

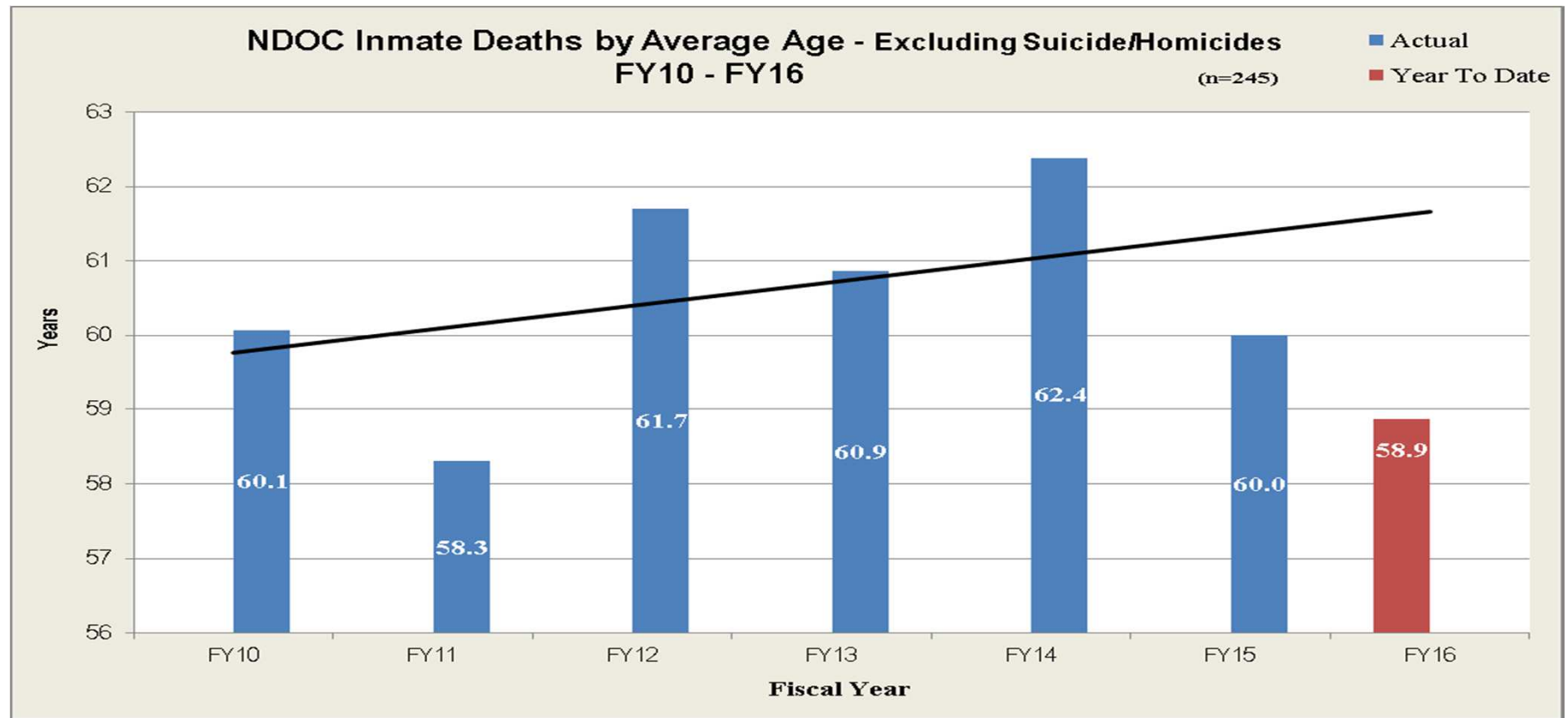
## Inmate Medical Issues and Aging Inmate Population





# Nevada Department of Corrections

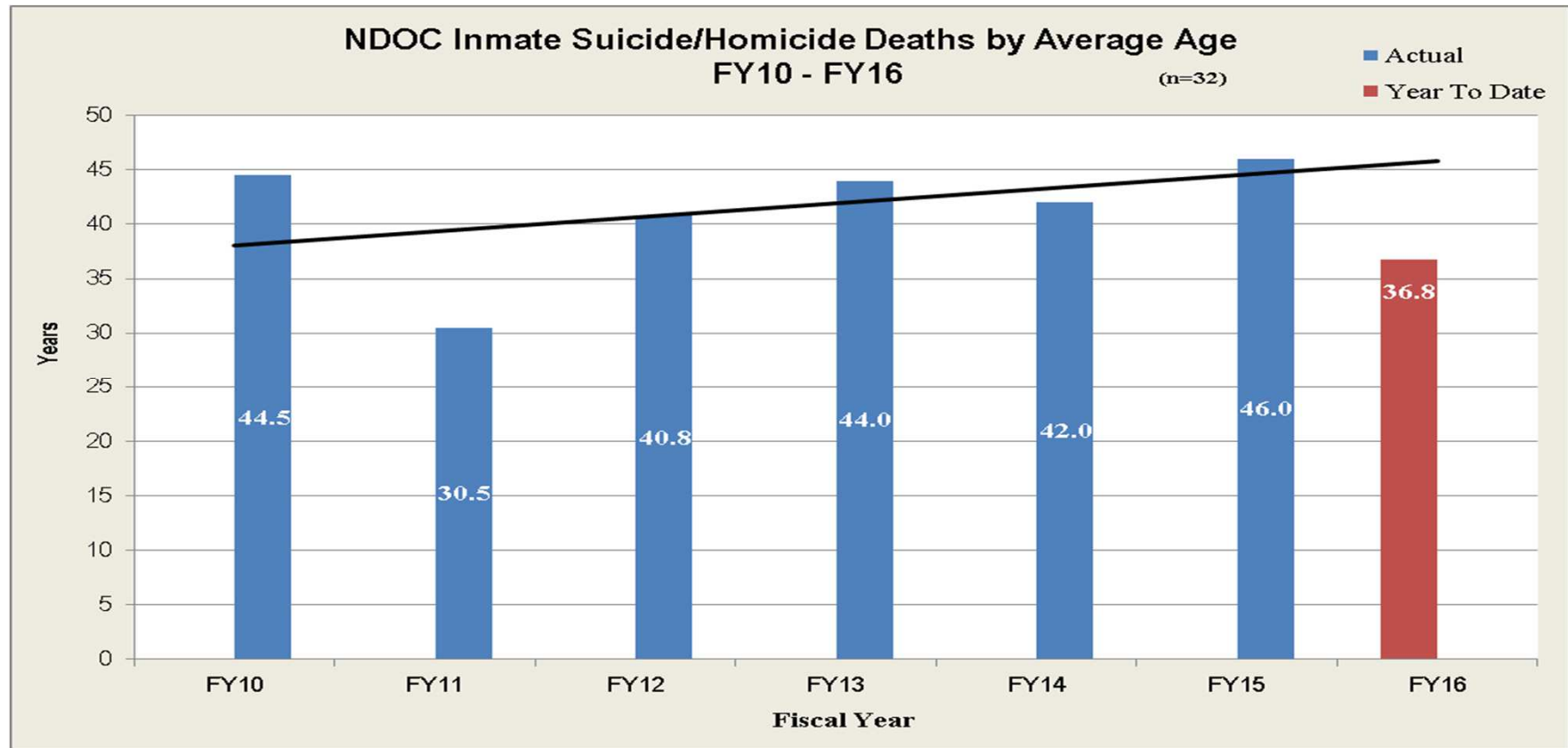
## Inmate Medical Issues and Aging Inmate Population





# Nevada Department of Corrections

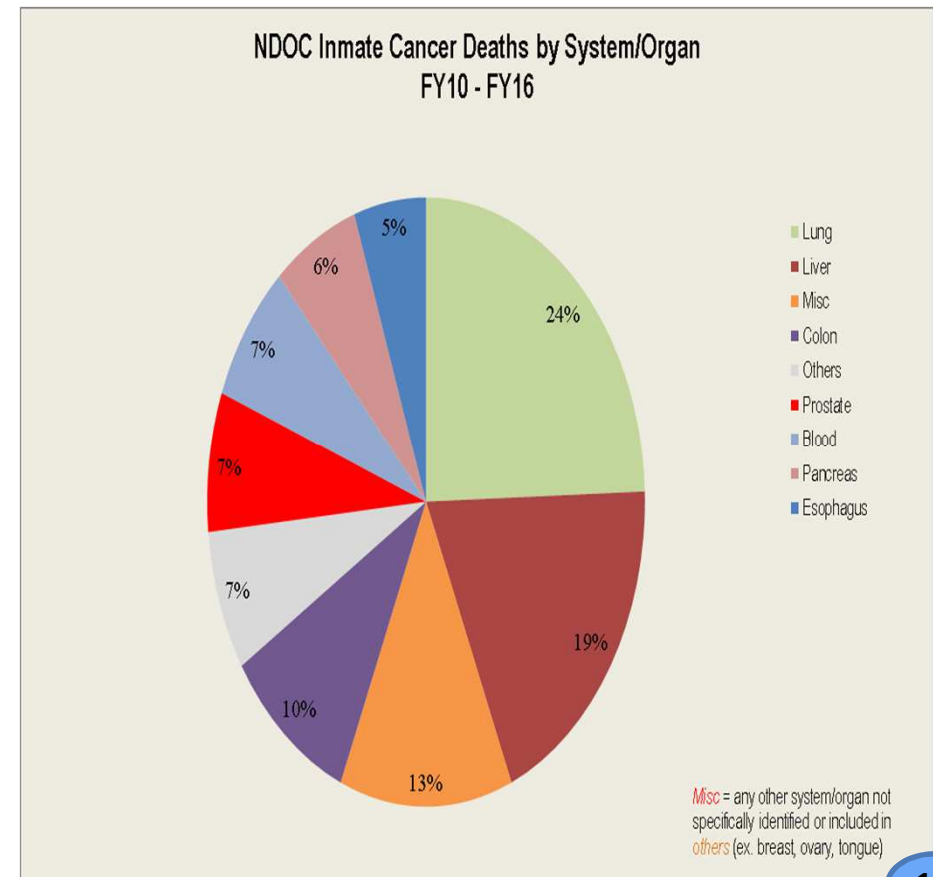
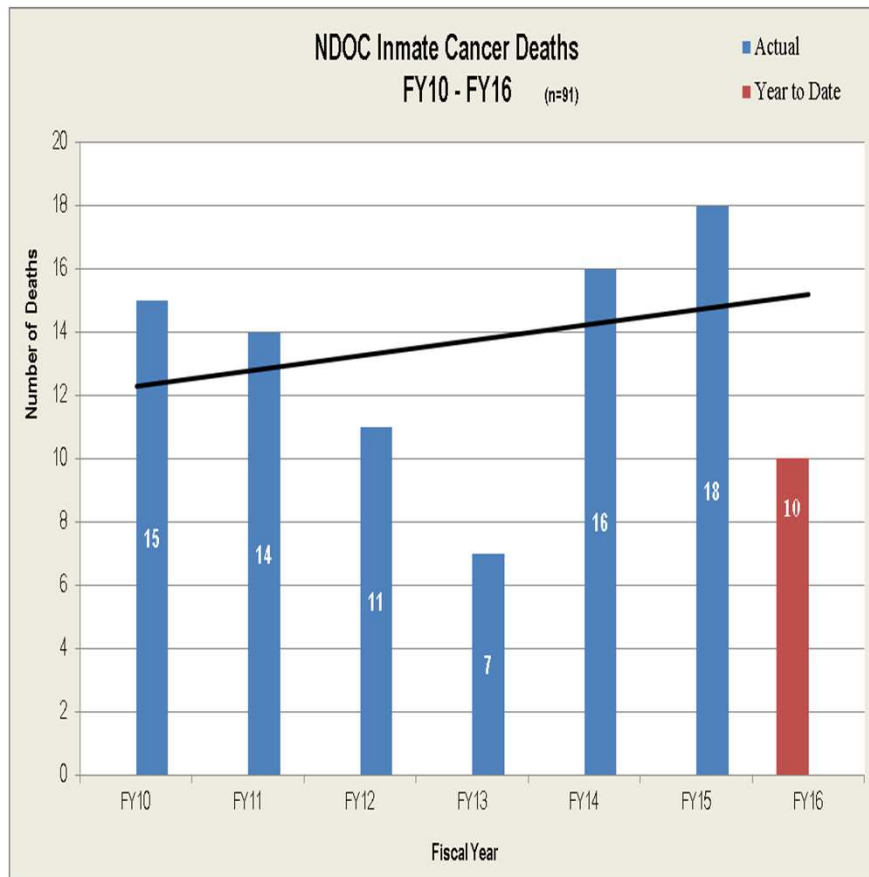
## Inmate Medical Issues and Aging Inmate Population





# Nevada Department of Corrections

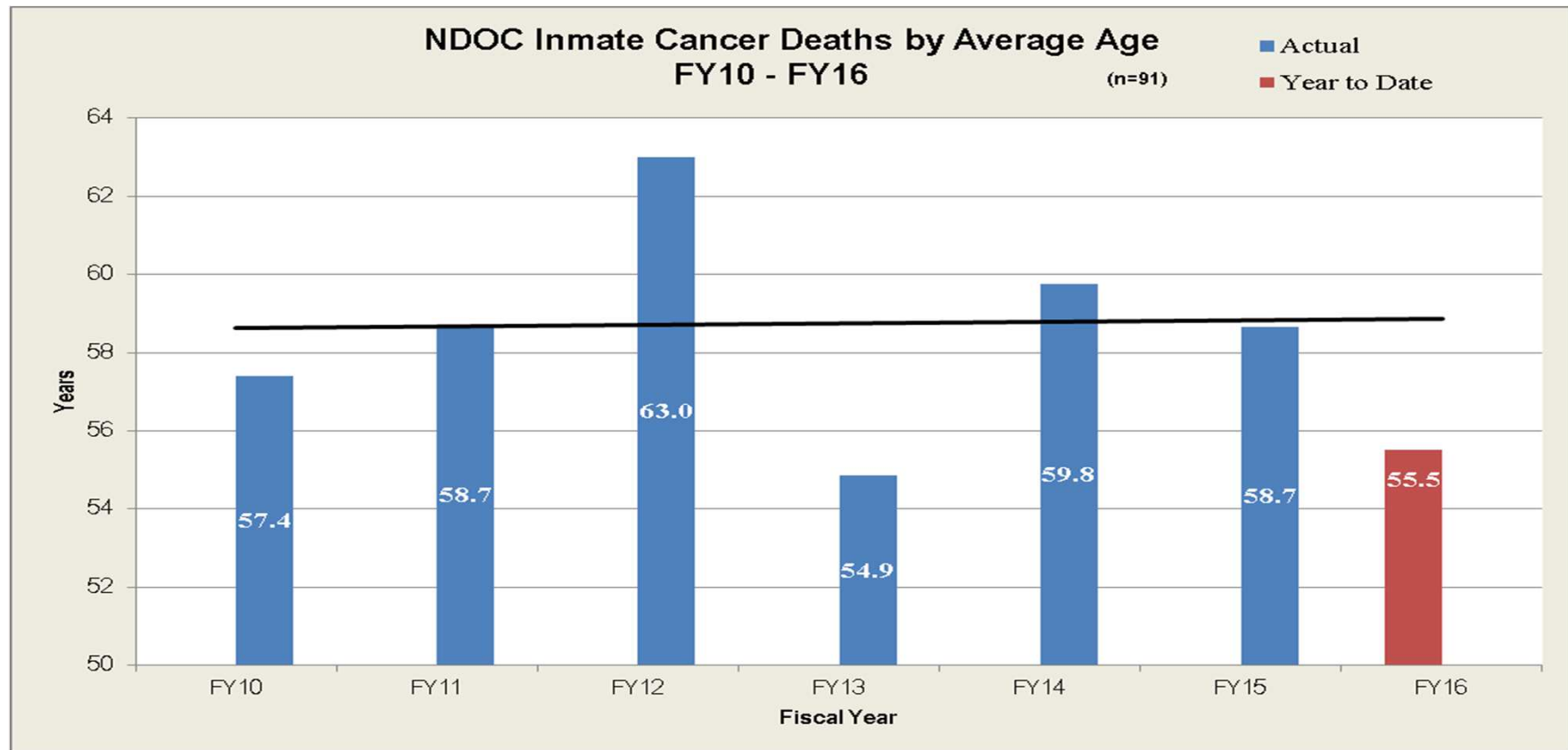
## Inmate Medical Issues and Aging Inmate Population





# Nevada Department of Corrections

## Inmate Medical Issues and Aging Inmate Population

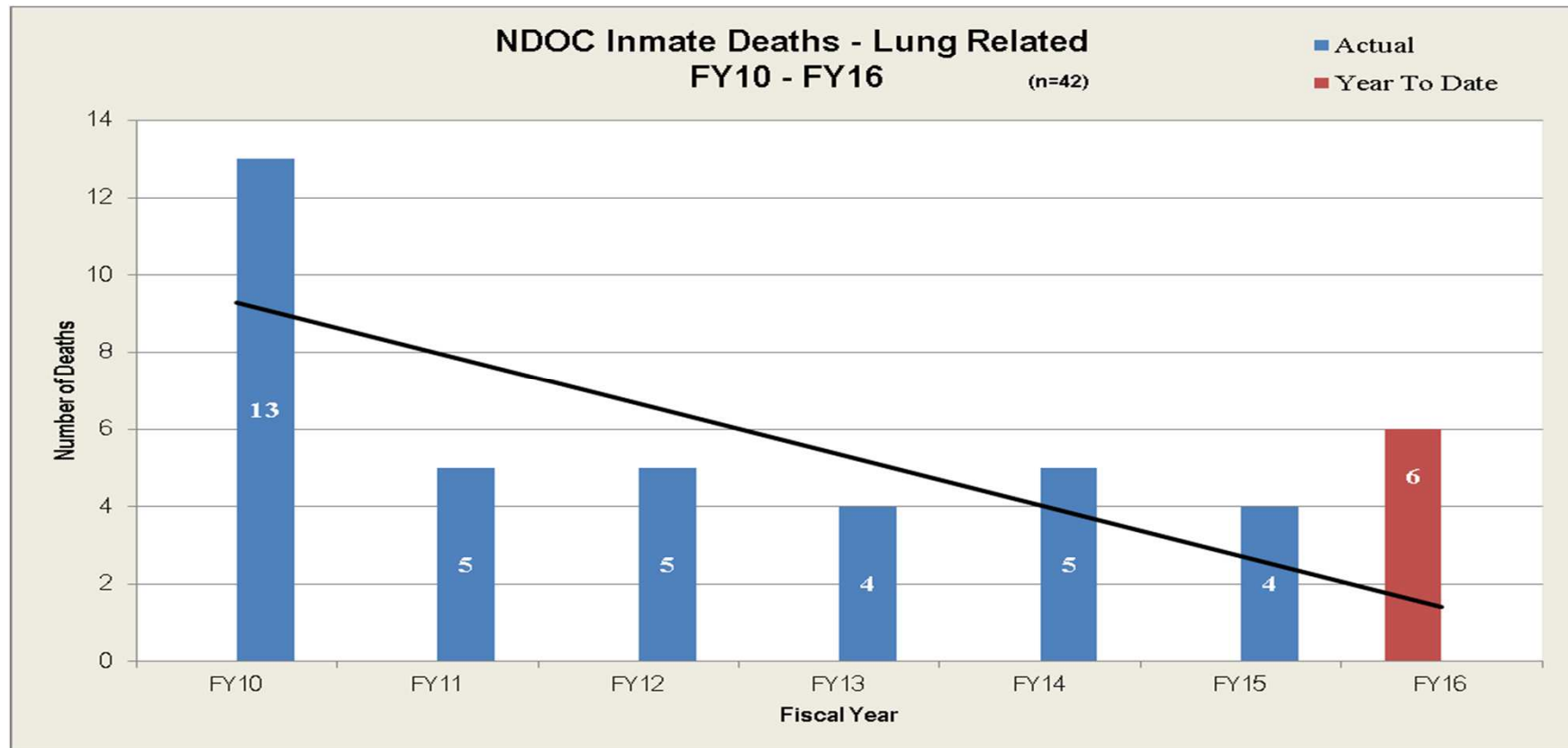






# Nevada Department of Corrections

## Inmate Medical Issues and Aging Inmate Population







# Nevada Department of Corrections

## NDOC Staffing & Budgetary Resources

Department of Corrections											
Legislatively Approved Budget Summary											
State Fiscal Year 16						State Fiscal Year 17					
B/A	Description	G.F.	Other	FTE Count	Total	G.F.	Other	FTE Count	IFC Hold	FTE Held	Total
3706	Prison Medical Care	41,262,937	1,260,990	288.62	\$42,523,927	41,913,110	1,266,364	288.62			\$43,179,474
3708	Offenders' Store Fund		19,953,832	57.00	\$19,953,832		22,077,587	57.00			\$22,077,587
3710	Director's Office	20,134,904	1,893,971	188.51	\$22,028,875	20,246,831	1,893,629	188.51			\$22,140,460
3711	Correctional Programs	7,639,699	436,542	99.51	\$8,076,241	7,918,721	444,777	99.51			\$8,363,498
3715	Southern NV Correctional Center (Moth-Balled)	251,978		1.00	\$251,978	252,511		1.00			\$252,511
3716	Warm Springs Correctional Center	10,556,181	8,962	116.00	\$10,565,143	10,738,010	8,864	116.00	159,582	3.00	\$10,906,456
3717	Northern Nevada Correctional Center	26,867,728	194,035	287.00	\$27,061,763	27,582,058	194,732	287.00	384,845	7.00	\$28,161,635
3718	Nevada State Prison (Closed)	95,311	950	0.00	\$96,261	95,578	950	0.00			\$96,528
3719	Prison Industry		5,857,643	19.00	\$5,857,643		5,888,251	19.00			\$5,888,251
3722	Stewart Conservation Camp	1,657,644	90,722	15.00	\$1,748,366	1,652,074	91,310	15.00			\$1,743,384
3723	Pioche Conservation Camp	1,706,316	14,705	16.00	\$1,721,021	1,650,631	14,705	16.00	63,571	1.00	\$1,728,907
3724	Northern Nevada Transitional Housing Center	667,468	493,247	11.00	\$1,160,715	672,309	511,075	11.00			\$1,183,384
3725	Three Lakes-Valley Conservation Camp	2,422,586	14,925	24.00	\$2,437,511	2,494,133	14,989	24.00	63,417	1.00	\$2,572,539
3727	Prison Ranch		3,540,434	5.00	\$3,540,434		3,696,759	5.00			\$3,696,759
3738	Southern Desert Correctional Center	22,958,254	63,618	262.00	\$23,021,872	23,539,664	64,560	262.00	328,806	6.00	\$23,933,030
3739	Wells Conservation Camp	1,285,267	9,332	12.00	\$1,294,599	1,244,793	9,169	12.00	63,571	1.00	\$1,317,533
3741	Humboldt Conservation Camp	1,274,897	10,764	12.00	\$1,285,661	1,265,488	10,764	12.00	63,571	1.00	\$1,339,823
3747	Ely Conservation Camp	1,311,775	12,861	12.00	\$1,324,636	1,272,665	12,861	12.00	63,571	1.00	\$1,349,097
3748	Jean Conservation Camp	1,513,537	7,361	15.00	\$1,520,898	1,549,138	7,408	15.00			\$1,556,546
3749	Silver Springs Conservation Camp (Closed)		3,873	0.00	\$3,873		3,873	0.00			\$3,873
3751	Ely State Prison	25,999,994	54,384	328.00	\$26,054,378	26,426,107	54,420	328.00	418,153	8.00	\$26,898,680
3752	Carlin Conservation Camp	1,185,688	9,712	12.00	\$1,195,400	1,196,500	9,712	12.00	63,571	1.00	\$1,269,783
3754	Tonopah Conservation Camp	1,302,645	11,138	12.00	\$1,313,783	1,295,181	11,234	12.00	63,571	1.00	\$1,369,986
3759	Lovelock Correctional Center	23,447,418	118,028	272.00	\$23,565,446	23,919,964	118,028	272.00	377,116	7.00	\$24,415,108
3760	Casa Grande Transitional Housing Center	3,417,751	885,549	28.00	\$4,303,300	3,472,634	888,820	28.00			\$4,361,454
3761	Florence McClure Women's Correctional Center	14,312,443	288,329	150.00	\$14,600,772	13,066,474	290,786	150.00	158,148	3.00	\$13,515,408
3762	High Desert State Prison	47,805,054	88,948	546.00	\$47,894,002	48,970,765	88,782	546.00	791,484	14.00	\$49,851,031
3763	Inmate Welfare Account		3,581,089	19.00	\$3,581,089		3,644,268	19.00			\$3,644,268
Totals:		\$259,081,348	\$38,902,071	2,807.64	\$297,983,419	\$262,439,212	\$41,314,804	2,807.64	\$3,062,977	55.00	\$306,816,993
Crosscheck (should be zero)					\$0						\$0
Percentage:		86.94%	13.06%		100.00%	85.54%	13.47%		1.00%		100.00%
Total Staff:				2,807.64						2,862.64	



# Nevada Department of Corrections

## NDOC Staffing & Budgetary Resources

### Nevada Department of Corrections FY16/17 Biennial Budget

Activity Title	FY 16 FTE	FY 17 FTE	FY 2016	FY2017	% Staff	% Funding
Medium, Close, and Maximum Security	2,032.00	2,080.00	180,360,963	184,344,592	72.52%	62.24%
Minimum Security	170.00	177.00	19,549,057	19,943,630	6.12%	6.74%
Health Care Services	288.62	288.62	42,534,179	43,075,508	10.18%	14.61%
Programs	99.51	99.51	8,103,180	8,352,955	3.51%	2.81%
Prison Industries	24.00	24.00	7,325,262	7,294,843	0.85%	2.50%
Inmate Services	76.00	76.00	17,640,967	17,937,351	2.68%	6.07%
Inspector General's Office	23.00	23.00	2,661,693	2,634,592	0.81%	0.90%
Fiscal Services	31.00	31.00	2,884,840	2,825,411	1.09%	0.97%
Information Technology Services	26.51	26.51	2,948,617	2,951,299	0.94%	1.01%
Human Resources, Payroll, and Training	25.00	25.00	2,180,515	2,139,186	0.88%	0.74%
General Administration	12.00	12.00	4,101,082	4,179,421	0.42%	1.41%
Totals:	<u>2,807.64</u>	<u>2,862.64</u>	<u>290,290,355</u>	<u>295,678,788</u>	<u>100.00%</u>	<u>100.00%</u>

Activity budget represents last available figures in Governor's Recommend.



# Nevada Department of Corrections

## Inmates on Supervision Outside of Prison Facilities

NDOC Offenders <sup>1 2</sup>	Male	Female	Total
Parole Housing Unit	33		33
In-House	12,223	1,190	13,413
Outcount			
Escape	24	4	28
Out of State	156	17	173
Drug Court	13	3	16
Compassionate Release <sup>3</sup>	1		1
DUI	26	3	29
Non DUI	23	9	32
Total	12,466	1,226	13,692
Parole & Probation Offenders <sup>4</sup>	Male	Female	Total
Paroles	2,280	433	2,713

<sup>1</sup> Offenders in custody and housed at an NDOC facility.

<sup>2</sup> This figure includes 33 offenders in custody of the Division of Parole and Probation and housed at an NDOC facility.

<sup>3</sup> An offender was pardoned his sentence and is participating in a compassionate residential confinement program.

<sup>4</sup> Offenders on Parole who served their minimum sentences and are in custody of the Division of Parole and Probation.



# Nevada Department of Corrections

## Inmate Programming and Number of Inmates Participating in Programing

Approved Correctional Classes .....			
Class	Completions	Class	Completions
ABC's of Parenting/Nurturing Families/Parent/Teen	25	Communications	163
Anger and Aggression	10	Conflict Resolution	22
Anger Management	552	Domestic Violence	114
Cage Your Rage	178	Emotions Management /SOS Help for Emotions	139
Commitment to Change Program I	759	Family Reunification (Re-Entry)	91
Commitment to Change Program II	652	Gang Awareness	31
Commitment to Change Program III	563	Houses of Healing	73
		Inside/Outside Dads	43



# Nevada Department of Corrections

## Inmate Programming and Number of Inmates Participating in Programing

Approved Correctional Classes .....			
Class	Completions	Class	Completions
New Beginnings	143	STOP Sex Offender Program I	47
Parenting	53	STOP Sex Offender Program II	41
Peaceful Solutions	22	STOP Sex Offender Program III	54
Relationship Skills	204	STOP Sex Offender Program IV	108
Seeking Safety I	283	Stress / Anxiety Management	20
Seeking Safety II	151	Structured Living: Basic Training	39
S.M.A.R.T. Choices (Re-Entry)	24		
Senior Structured Living "True Grit" Program	417		



# Nevada Department of Corrections

## Inmate Programming and Number of Inmates Participating in Programing

### Approved Correctional Classes .....

Class	Completions
Surviving Sexual Assault/SOAR	5
The Path to Success (Re-Entry)	73
Thinking for a Change	72
Unbearable Stress	15
Victim Awareness / Empathy	320
Women's Health	19



# Nevada Department of Corrections

## Inmate Programming and Number of Inmates Participating in Programing

Education .....	
Class	Completions
High School Equivalency (HSE)	307
High School Diploma (HSD)	291
AA Degree	1
College Certificate	6

Substance Abuse Treatment Programs.....	
Trust (SDCC)	89
Phoenix (WSCC)	49
STARS (FMWCC)	65
Stepping Stones (CGTH)	25



# Nevada Department of Corrections

## Inmate Programming and Number of Inmates Participating in Programing

Job Skills Classes .....	
Class	Completions
Braille I Braille II Braille III	9
Building Your Future: Job Readiness Skills	506
Career Technical Education	464
ServSafe Food Handling	305
Financial Literacy	42
OSHA 10	37





# Nevada Department of Corrections

## **Relationship between the Department And Educational Facilities**

Eight School Districts throughout the State of Nevada administer and operate Adult High School Programs at 16 of the 18 NDOC facilities in Nevada as follows:

- Carson City School District
  - Northern Nevada Correctional Center
  - Stewart Conservation Camp
  - Warm Springs Correctional Center
- Clark County School District
  - Florence McClure Women's Correctional Center
  - Jean Conservation Camp
  - Southern Desert Correctional Facility
  - Three Lakes Valley Conservation Camp
- Elko County School District
  - Carlin Conservation Camp
  - Wells Conservation Camp



# Nevada Department of Corrections

## Relationship between the Department And Educational Facilities

(Continued):

- Humboldt County School District
  - Humboldt Conservation Camp
- Lincoln County School District
  - Pioche Conservation Camp
- Nye County School District
  - Tonopah Conservation Camp
- Pershing County School District
  - Lovelock Correctional Center
- White Pine County School District
  - Ely State Prison
  - Ely Conservation Camp

*The remaining two NDOC facilities, Northern Nevada Transitional Housing Center and Casa Grande Transitional Housing Center refer NDOC inmates off site to either Washoe County School District or Clark County School District for Adult High School Programs.*



# Nevada Department of Corrections

## **Status Report on Re-Entry Programs and Qualifications Requirements**

The Re-Entry Program provides:

- Assistance with obtaining documents and referrals necessary to successful re-entry
- Pre-Release training for inmates including:
  - Job Readiness training for inmates
  - Personnel Development training for inmates
  - Financial training for inmates
- Coordination with Parole and Probation for Pre-Release Orientations, Parole Plan Approval, Housing Approval, & Financial Requirements



# Nevada Department of Corrections

## **Status Report on Re-Entry Programs and Qualifications Requirements**

### Program Qualifications

- Must have six to eighteen months remaining prior to parole or expiration
- Level 1 Status
- Write up free for a minimum of six months

Qualified inmates close to release are moved to specific dedicated housing units at SDCC, FMWCC, CGTH, WSCC, or NNTH as capacity permits.



# Nevada Department of Corrections

## **Status Report on Re-Entry Programs and Qualifications Requirements**

The Re-Entry Program provides assistance with obtaining:

- Birth Certificates
- Replacement Social Security Cards
- SSI Applications
- Parole Plans / Housing Assistance
- Community Resource Referrals
- Veterans' Services Referrals



# Nevada Department of Corrections

## **Status Report on Re-Entry Programs and Qualifications Requirements**

The Re-Entry Program provides the following employment readiness assistance:

- Job Readiness Training
  - Employment/Interview/Networking Skills
  - Resume/Cover Letter Building
  - Financial Topics (Budgeting/Banking)
- Coordination with Workforce Connections
  - Pre-Release Employment Services
  - Job Development (Post Release)
  - Case Management (Post Release)



# Nevada Department of Corrections

## **Status Report on Re-Entry Programs and Qualifications Requirements**

Employment readiness assistance (Continued):

- Job Development / Re-Entry at CGTH & NNTH
  - Direct contact with local employers
  - Community partner employment referrals
  - Local trade union collaboration
  
- “RESPECT” Program at LCC and SDCC
  - Basic Computer Education
  - Vocational Lifeskills Training
  - Behavior Modification



# Nevada Department of Corrections

## **Status Report on Re-Entry Programs and Qualifications Requirements**

Employment readiness assistance (Continued):

- **Women's Opportunity for Work (W.O.W. Program)**
  - Began May 2014 with grant provided by Workforce Connections
  - Goals to serve 150 women pre and post release with vocational training and education training on:
    - \* Culinary
    - \* Warehousing
    - \* Retail
    - \* Computer Operation
  - Goals for inmates to transition from regimental discipline utilizing the services of a post release community partner
    - \* Post release program participant is paired with a community partner that provides a post release continuum of care.





# Nevada Department of Corrections

## **Status Report on Re-Entry Programs and Qualifications Requirements**

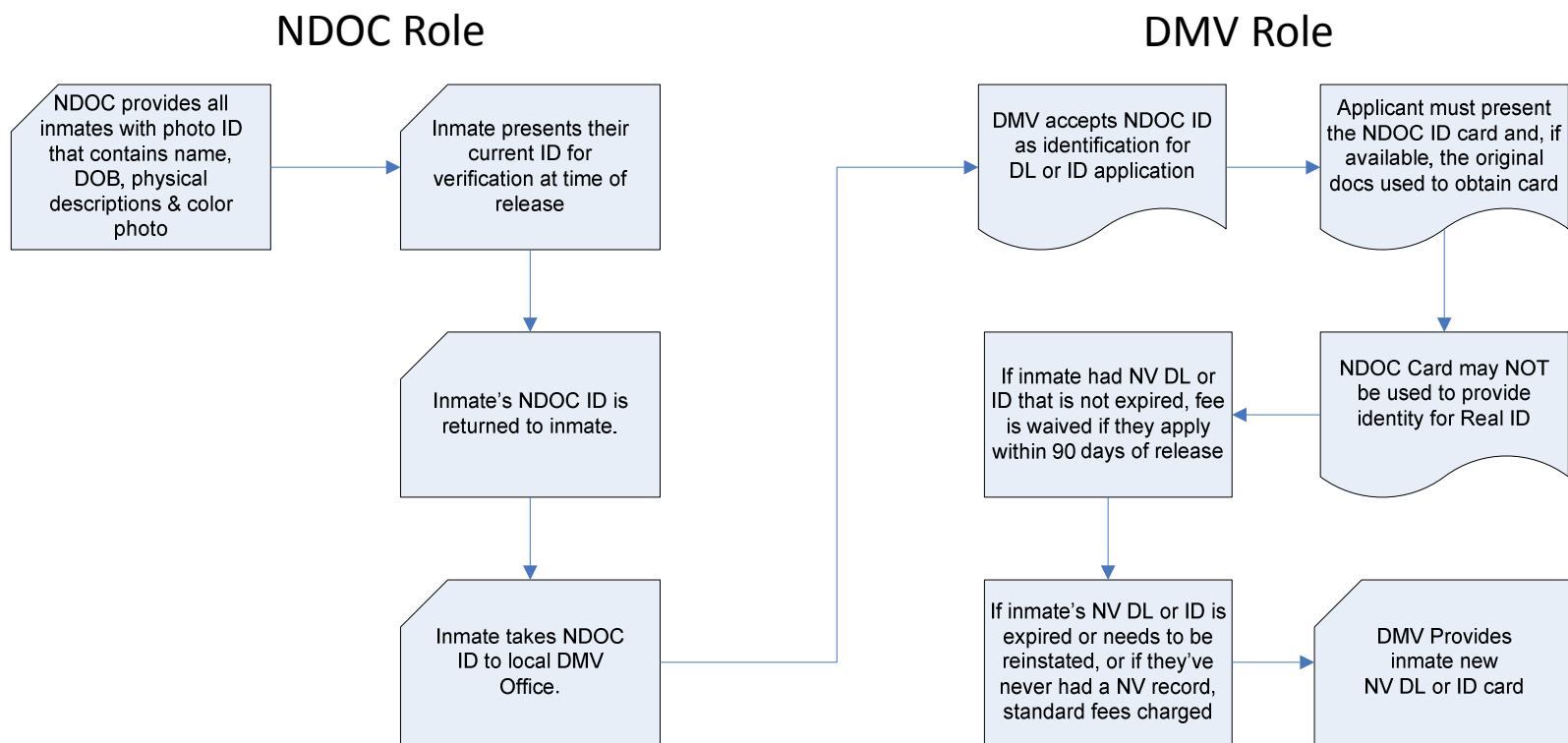
### Re-Entry Program Challenges

- Assisting approximately 5,460 prisoners re-entering society annually.
- Approximately 78.6% of NDOC offenders claim Nevada as their home. Of those, approximately 70% return to the Las Vegas area.
- Providing re-entry services for the number of ex-offenders competing for the same housing, jobs, and other resources available within our communities.



# Nevada Department of Corrections

## Relationship with the Department of Motor Vehicles On Providing Offender Identification Cards





# Nevada Department of Corrections

## **Overview of Offender Management System And Time Credits**

- Classification and Housing of Inmates
- Transportation of Inmates
- Work, Programming and Education of Inmates
- Release on Parole or Discharge



# Nevada Department of Corrections

## **Overview of Offender Management System And Time Credits**

### Classification and Housing of Inmates

- Inmate classification process determines where an inmate will be housed during their incarceration period.
- Numerous factors are utilized to calculate a custody level and from that an appropriate institution or facility is selected.
- As factors change, so can the inmate's custody level and housing.



# Nevada Department of Corrections

## **Overview of Offender Management System And Time Credits**

### Transportation of Inmates

- As inmates are received into the NDOC and classified, we have to move many of these inmates from the Intake Institutions to other locations.
- We also have to transport inmates as their custody level changes, to attend a court hearing, for outside medical appointments, etc.
- To save money, when possible, inmates are transported together using a scheduled weekly bus run.



# Nevada Department of Corrections

## **Overview of Offender Management System And Time Credits**

### Work, Programming and Education of Inmates

- During their incarceration inmates can work, go to school and/or program. Availability varies based upon location, custody level and needs of the inmate.
- These types of inmate programs not only provide a constructive use of the inmate's time, but may also help reduce the likelihood they will return to NDOC.
- Inmates are encouraged to complete their education if at all possible during their incarceration and to take any programming which has been identified as appropriate given their risk/needs assessment.



# Nevada Department of Corrections

## **Overview of Offender Management System And Time Credits**

### **Release on Parole or Discharge**

- Once an inmate has served their minimum term they are eligible for parole consideration by the Parole Board.
- If the Parole Board grants parole and the inmate has no consecutive sentence pending, Parole and Probation (P&P) reviews the inmate's proposed release plan. If the plan is acceptable P&P notifies NDOC and we set release date. Such inmates will be under the supervised of P&P in the community.
- Inmates denied parole by the Parole Board, unless they have a "life" sentence, will eventually expire their sentence and be released to the community. Such inmates, unless they require "lifetime supervision" will not be supervised by P&P .



# Nevada Department of Corrections

## **Overview of Offender Management System And Time Credits**

### Time Credits

- Upon entry into NDOC, Intake staff enter the inmate's sentencing information as contained in the certified copy of their Judgment of Conviction (JOC).
- Other pertinent information is also entered during the Intake process which is primarily obtained from the Pre-Sentence Investigation (PSI) report completed by P&P prior to sentencing.
- The offense date, as noted in the JOC and/or PSI, determines which sentence credit statute the inmate was sentenced under. This in turn determines which sentence credits the inmate would be eligible for under the law.
- The most current statute regarding sentence credits is NRS 209.4465, which is for offenses committed on or after July 17, 1997.





# Nevada Department of Corrections

## **Overview of Offender Management System And Time Credits**

### **Time Credits (Continued)**

- Currently under this statute inmates can get 20 days per month for basically staying out of trouble. These are called “good time” or “statutory” credits.
- In addition, inmates can earn 10 days per month for working or going to school full-time. These are referred to as “work” credits.
- Inmates on parole, in minimum custody camps or in residential confinement programs can earn an additional 10 credits per month as “work” credits too.
- NRS 209.4465 also stipulates whether these credits apply to the minimum sentence and the calculation of the inmate’s parole eligibility date (PED) or not.



# Nevada Department of Corrections

## **Overview of Offender Management System And Time Credits**

### **Time Credits (Continued)**

- In order to calculate projected Parole Eligibility and Expiration dates, we include all flat days (the number of days in each month) as well as the number of stat and work credits the inmate is statutorily eligible for.
- If the inmate doesn't earn all the projected credits, either by not earning full work credits or losing stat credits for some reason, these projected dates may move away. Similarly, if inmates earn additional (meritorious) credits their dates may move closer.
- Director may allow not more than 90 days of credit each year for an offender who engages in exceptional meritorious service.



# Nevada Department of Corrections

## Overview of Offender Management System And Time Credits

### How Dates are Calculated

- The sentence structure from the Judgment of Conviction is converted from years/months into days. In order to have completed the sentence imposed by the court, the inmate will need to have served/earned this total number of days owed.
- Both the minimum and maximum sentences will be calculated this same way. For example, a 12 (minimum) – 36 (maximum) month sentence is converted to 365 (minimum) to 1095 (maximum) day sentence.
- To calculate when the inmate will have completed the minimum term (12 months/365 days) we can look at how the system calculates this month by month (see next 2 slides).



# Nevada Department of Corrections

Best Case gets out July 2 <sup>nd</sup>									
OWES	365		304	246	185	125	64	4	Total
		JAN	FEB	MAR	APR	MAY	JUN	JUL	Days
	FLAT	31	28	31	30	31	30	2	183
	STAT	20	20	20	20	20	20	1	121
	WORK	10	10	10	10	10	10	1	61
		-61	-58	-61	-60	-61	-60	-4	365

Does no work in MARCH gets out July 7 <sup>th</sup> Lost 10 work credits, date changed 5 days								
OWES	365		304	246	195	135	74	14
		JAN	FEB	MAR	APR	MAY	JUN	JUL
	FLAT	31	28	31	30	31	30	7
	STAT	20	20	20	20	20	20	5
	WORK	10	10	0	10	10	10	2
		-61	-58	-51	-60	-61	-60...	Days

365



# Nevada Department of Corrections

## How Dates are Calculated (Continued)

Gets a 45 day Merit credit posted Date Changes from July 2 <sup>nd</sup> to June 10 <sup>th</sup> A 23 Day Change							
OWES	365		304	201	140	80	19
		JAN	FEB	MAR	APR	MAY	JUN
	FLAT	31	28	31	30	31	10
	STAT	20	20	20	20	20	6
	WORK	10	10	10	10	10	3
	MERIT		45				
-61   -103   -61   -60 ...   DaysSatisfied							
365							



# Nevada Department of Corrections

## How Dates are Calculated (Continued)

- In these examples the inmate's Parole Eligibility Date (because we were looking at the minimum sentence), would be the date he/she has met their 365 day obligation, including all flat, stat, work and/or merit credits which have been applied to this sentence.
- The NDOC notifies the Parole Board when inmates are eligible for parole consideration, which is typically 3 months before their minimum eligibility date. This allows P&P to review the inmate's release plan, if granted parole, and hopefully the inmate will be released on their parole eligibility date.
- The same applies when calculating the Projected Expiration Date based upon their maximum term.





# Nevada Department of Corrections

## Closing & Final Questions?



We invite you to tour our many facilities as soon as your schedule permits!