

Invasive Weeds in Nevada

Current Status

Robert E. Wilson

Dr. Wayne S Johnson

Extension Educator

Extension Specialist

White Pine County

UNCE & CABNR

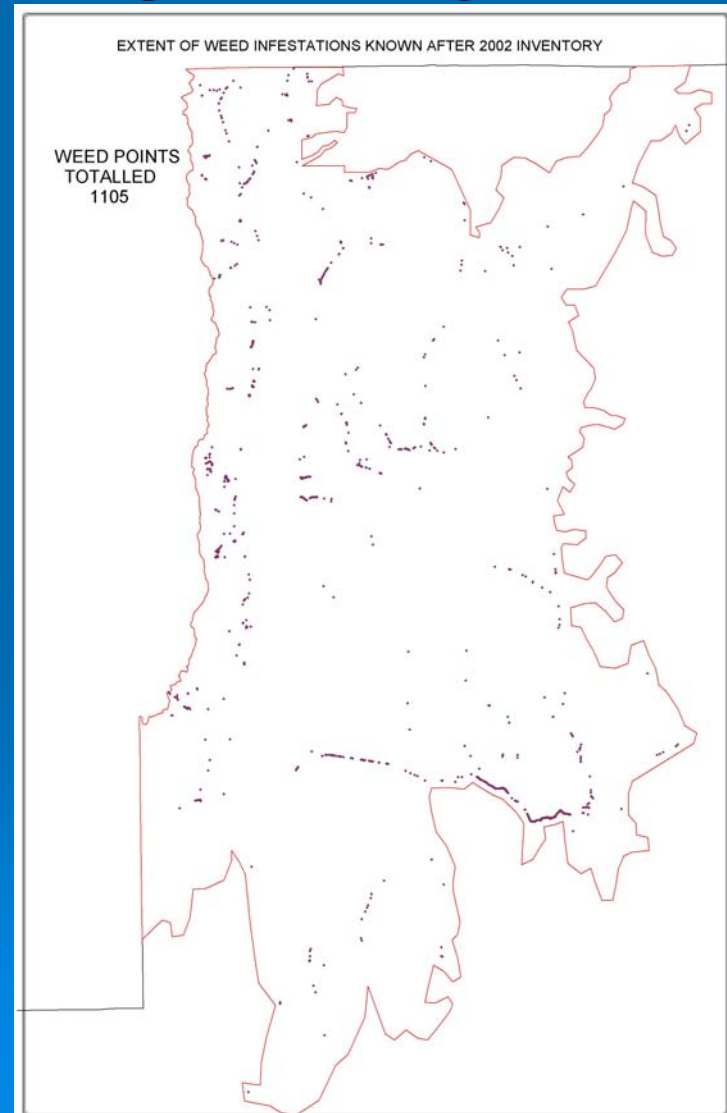
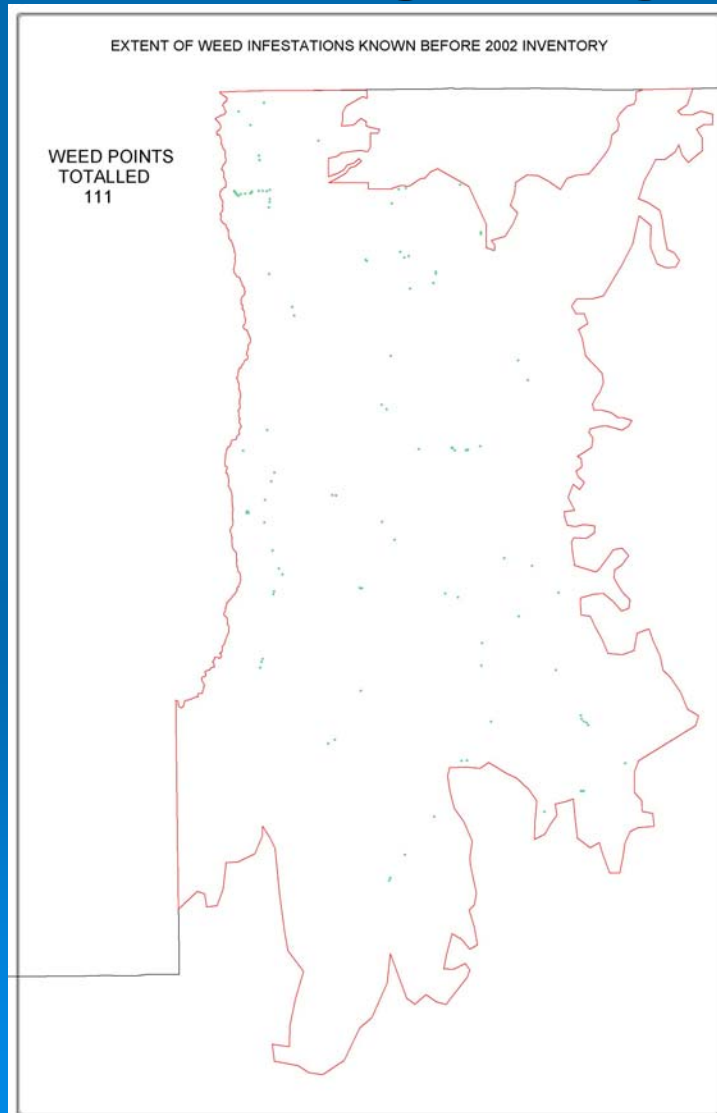
EXHIBIT J4 Lands Document consists of **30 slides**.

- ☒ Entire document provided.
☐ Due to size limitations, _____ and _____ provided. A copy of the complete document is available through the Research Library (775/684-6827) or e-mail library@lcb.state.nv.us.

Meeting Date: **05-06-04**




The More We Look The More We Find



Time Is Running Out!!

The Next Generation
Will Not Be Able To
Control Invasive Weed
Populations If We Don't
Limit Their Spread

The background of the slide is a solid blue color. In the bottom right corner, there are several decorative, concentric blue circles of varying sizes, resembling ripples in water. These circles are centered around the bottom right of the text area.

We Can't Talk Weeds To Death



Across Nevada

What is Happening
Now?



Lake Tahoe Basin Weed Coordinating Group

- Formed in 2002. MOU 2003
- Bi-State, Basin-wide Effort to Combat Invasive Weeds and Protect Lake's Water Quality
 - About 30 members - Agencies, Land Owners, Residents.
 - Since 1998 TWT Control Efforts Have That Problem Largely Under Control.
 - Prioritized 16 weed species. Spotlighting Knapweeds, Especially Spotted Knapweed.
 - Funnel Information to Each of the Counties, Which are Then Responsible For Responding.
 - **Works Really Well!**

Weed Warriors

- Weed Warrior invasive weed training program
 - About 70-80 people per year, from Master Gardeners to agency employees
 - Washoe & Clark Counties

Douglas County

- Active Weed Program
 - 1 Full Time Employee

Lyon County

- Walker River Weed District (small budget)
- TWT Control on Walker River
(mostly East Walker River)

Paradise Valley Weed District

- Coordinator Hired in 2003.
- Written Management Plan
- Focusing on Leafy Spurge & TWT
- Received \$15-\$20,000 first external funding
- Most Major Producers Applied for EQUIP Funds in 2004 for Noxious Weed Control
- UNCE established 5 demonstration plots
- UNCE developing a newspaper insert for this year for Humboldt Sun

Elko County Success Stories

- Elko BLM 1st Inventoried County Weeds
- Soil & Water Enhancement Action Team Coalition (SWEATCO)
- Shoesole Resource Management Group (SRMG)
- Northeastern Nevada Stewardship Group (NNSG)

Elko County Success Stories (continued)

- Woad Warriors
- Spring Creek Weed Action Team (SWAT)
- Spring Creek Region Cooperative Weed Management Area (SCRCWMA)
- Elko County Cooperative Weed Management Area (ECCWMA)



Woad Warriors' Results

- Increased Annual Participation
(230 participants in 2002)
- Increased Public Awareness of Noxious Weeds
- Increased Weed Infestation Reporting
- Reduction of Dyer's Woad in Spring Creek Area
- Inspired Formation of Spring Creek Weed Action Team

SWAT Weed Management Projects

- Annual Knapweed Pulls Along 3 rights-of-ways
- Annual Supervision & Support at “Dyer’s Woad Pull”
- Other Weed Pulls
- Numerous Annual Herbicide Applications
- Partnership with Utility Companies
- Utility Corridor Seeding

Elko County Cooperative Weed Management Area

- Outgrowth of Elko County Weed Summit Feb., 2003
- Formation of Steering Committee
- Cooperating with Elko County Conservation Districts
- Strategic Plan Completed
- MOU Completed & Signed
- Annual Work Plan in Progress

Tri-County Weed Program

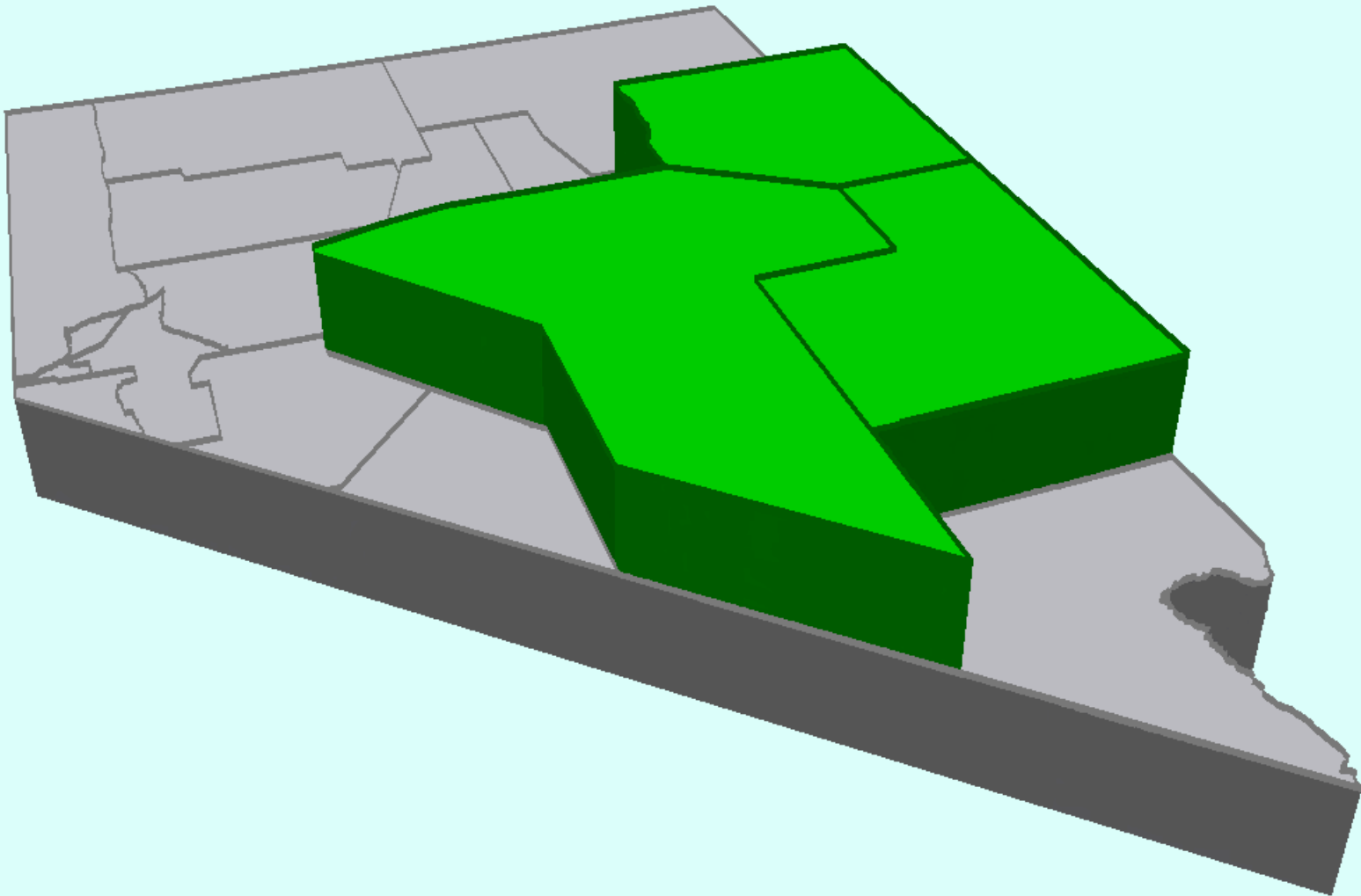
White Pine County

Nye County

Lincoln County

Tri-County Weed Program

23,460,480 Acres



Going Forward



Accomplishments

3 years of Operation

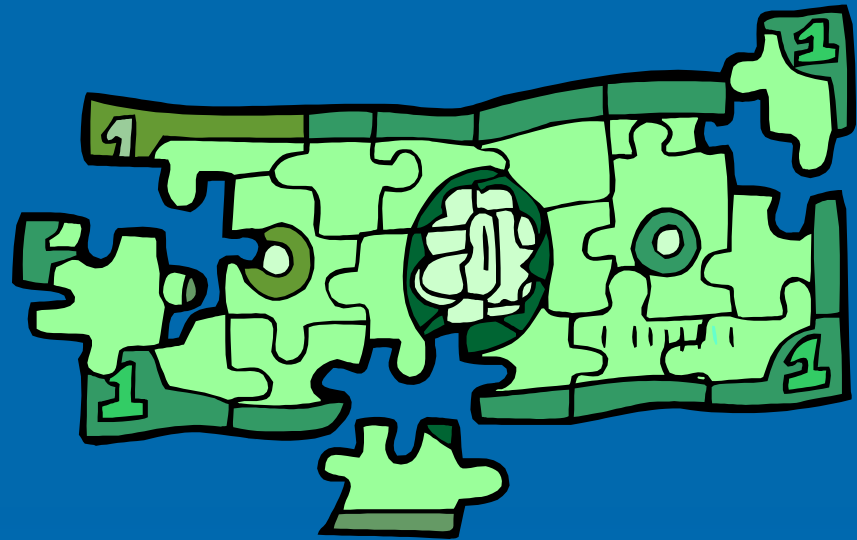
- Inventoried 4,354,522 Acres in 2003
- Inventory Total of 6,888,552 Acres During the Past 2 years.
- 94,919.8 acres treated in 2003
 - Ely & Battle Mtn. BLM Districts
 - NDOT, Counties
 - Private Landowners

Accomplishments

- NDOT Highway Shoulders Seeded to Grass
- 8 CWMAs Established – More Being Started
- Multiple Full-time & Seasonal Employees
- High Level of Public Education and Awareness
- Integral Restoration Projects
- Adequate Financial Resources
- Strongly Supported Throughout Area

Tri-County Weed Program

- Landowner Funded
- No Tax Levy
- Agency Participation
- Voluntary Participation



Technology Use



Duckwater Indian Reservation

- Completed Invasive Weed Management Plan
- Treated TWT for Past 2 Years
- Treated 269.11 Acres of Russian Knapweed
- Developing Reclamation Plan
- Increasing Commitment to Control Invasive Weeds

Agencies

- Ely BLM District – Strong Supporter of Efforts, But Significant Budget Cuts
- Battle Mountain BLM District – Some Efforts in 2003, None in 2004
- USFS – Budget Cuts, Contracting to Control Weeds on Ely Ranger District
- NDOW – Expending Resources to Control TWT and Russian Knapweed at Kirch Wildlife Refuge

Invasive weeds are in the front seat of environmental issues in Southern Nevada.

- 3 CWMA in Clark & Southern Nye Counties
- Cooperative Extension Trained Over 160 People in Urban and Rural Areas in Invasive Weed Training Workshops
- 2 More Classes this Spring in Las Vegas and Logandale.
 - Workshops approved by Nevada Dept. of Agriculture for continuing education credits for pesticide applicators

What's Common Among These Successfully Diverse Groups?

- A Cause
- A Well-Defined Mission Statement (focus)
- Cohesiveness & Cooperation
- A Plan with Division of Labor
- Flexibility
- Hard Work and Endurance!
- Empowerment!
- Encourage Each Other
- “Citizen champions!”

Continued Needs of Cooperative Weed Management Area

- Awareness and Education
 - Leadership & Volunteer Development
 - Invasive Weed Training
- Research
 - Economically Sound Mgmt. Strategies
 - Ecologically Sound “Best Mgmt. Practices”
- Increased Resources - \$, Equipment, & People
- Regulatory Development & Enforcement
- Local Community Support
 - Full Collaboration with Agencies/Jurisdictions/Public

How Can the Legislature Help?

➤ Become Aware of Invasive Weed Impacts

➤ Resource Allocation & Facilitation Among: State Entities Principle Role

- | | |
|-------------------|------------------------------|
| • Counties (NACO) | • County Mgmt. & Development |
| • NDOA | • Regulatory |
| • UNCE | • Outreach Education |
| • CABNR (NAES) | • Research |

➤ Fund Identification of Weed Program Needs

➤ Interim Committee to Study for 2007 Session:

- Long term programmatic strategies
- Sustainable funding sources

Invasive Weeds in Nevada

Thank You!

Robert E. Wilson
Extension Educator
White Pine County

Dr. Wayne S Johnson
Extension Specialist
UNCE & CABNR



