

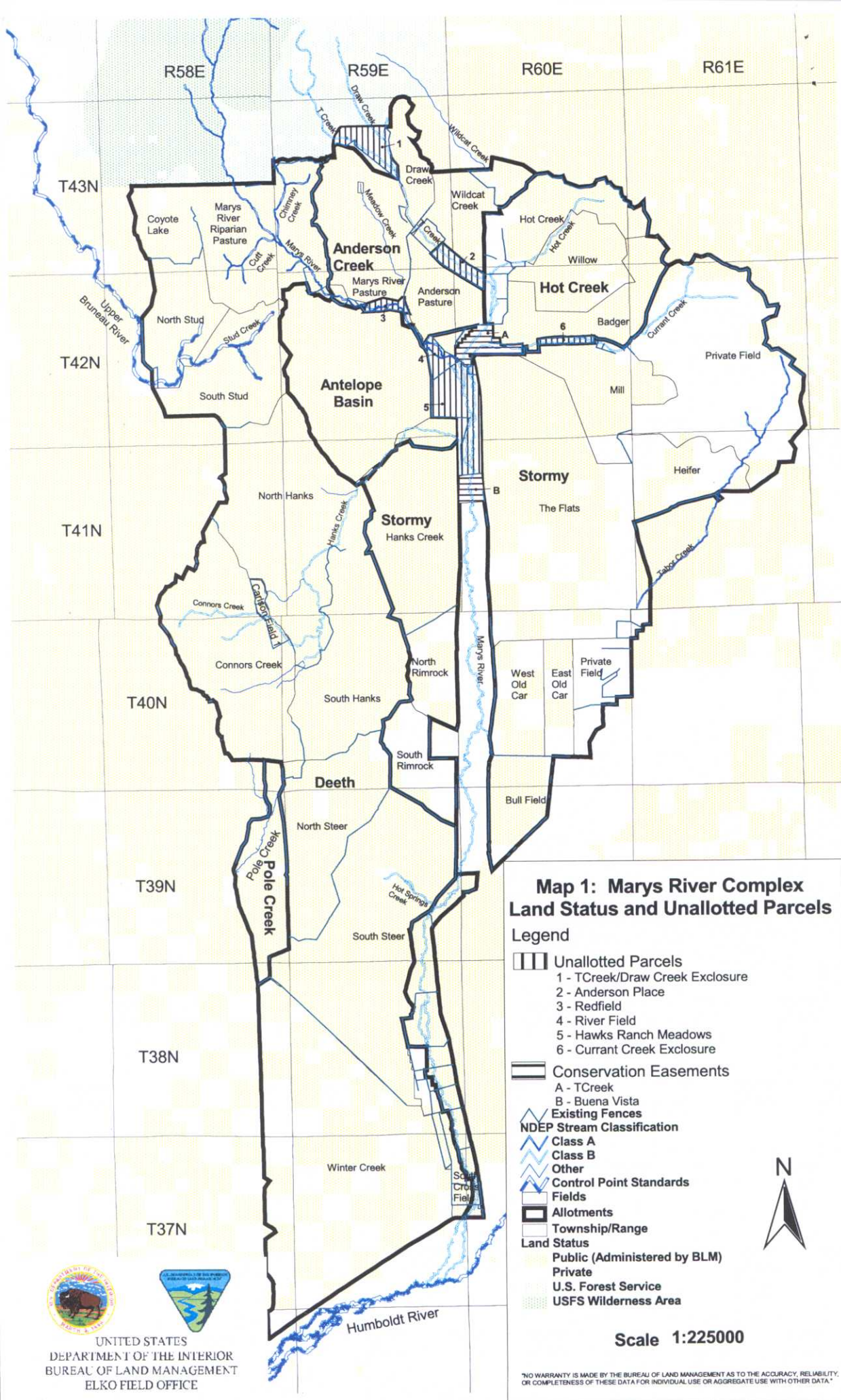
# Marys River Complex Evaluation Summary

Allotment Name	Permittee	Total Permitted Use (AUMs)	Resource Issues	Technical Recommendations
Anderson Creek	William H. and Lana Gibbs W.H. Gibbs Co.	5,559	<ul style="list-style-type: none"> <li>Riparian issues (PFC) on springs and streams.</li> <li>Heavy/severe use on riparian species</li> <li>Stream habitat (in-stream features) condition was rated as poor on all streams except T Creek and Upper Marys River. Riparian conditions were at least fair on all streams.</li> <li>Utilization objectives exceeded on bitterbrush and perennial grasses</li> <li>Water Quality Issues</li> <li>LCT Issues (related to in-stream habitat conditions)</li> </ul>	<ul style="list-style-type: none"> <li>Implement a grazing management system which incorporates rest, deferred use, and early use on riparian areas (several options have been presented as developed with the permittees).</li> <li>Establish new utilization standards for perennial forage species.</li> <li>Improve livestock distribution by fencing and water development</li> <li>Authorize use in unallotted parcels and riparian exclosures as appropriate (Anderson Place Exclosure, T-Creek/Draw Creek Exclosure, Redfield Exclosure, Meadow Creek Exclosure, Marys River Exclosures 2-7, and T-Creek Exclosures 3-5).</li> <li>Reevaluate stream and springs within unallotted parcels and riparian exclosures in 3 years.</li> </ul>
Hot Creek	W.H. Gibbs Co.	4,066	<ul style="list-style-type: none"> <li>Riparian issues (PFC) on springs and streams.</li> <li>Hot Creek is in poor stream condition</li> <li>Utilization objectives exceeded on perennial grasses</li> <li>Water Quality Issues</li> <li>Vegetative cover has not increased on desirable forage species</li> <li>LCT Issues on Currant Creek (i.e. habitat condition)</li> </ul>	<ul style="list-style-type: none"> <li>Implement a grazing management system which incorporates rest, deferred use, and early use on riparian areas.</li> <li>Construct riparian protection fencing</li> <li>Establish new utilization standards for perennial forage species.</li> <li>Improve livestock distribution by fencing and water development</li> <li>Authorize use in Currant Creek Exclosure (unallotted parcel) as appropriate.</li> <li>Reevaluate stream and springs within unallotted parcels in 3 years.</li> </ul>

EXHIBIT <u>14</u> Lands	Document consists of <u>4</u> pages
<input checked="" type="checkbox"/> Entire document provided. <input type="checkbox"/> Due to size limitations, pages ____ through ____ provided.	
A copy of the complete document is available through the Research Library (775-684-6827 or e-mail library@lcb.state.nv.us).	
Meeting Date <u>01/22/04</u>	

Allotment Name	Permittee	Total Permitted Use (AUMs)	Resource Issues	Technical Recommendations
Antelope Basin	Higbee Brothers	3,278	<ul style="list-style-type: none"> <li>Riparian issues (PFC) on springs and Hanks Creek</li> <li>Heavy use of riparian species and severe hoof shear along Hanks Creek</li> <li>Utilization objectives exceeded on bitterbrush and perennial grasses</li> <li>Hanks Creek – stream habitat (in-stream features) condition not achieved, however riparian condition achieved</li> <li>Water Quality Issues</li> <li>Livestock Drift problems between Antelope Basin Allotment and South Stud Field of the Deeth Allotment.</li> </ul>	<ul style="list-style-type: none"> <li>Reduce hot season grazing to improve riparian conditions.</li> <li>(allow some fall grazing as riparian conditions show improvement)</li> <li>Improve livestock distribution by fencing and water development</li> <li>Authorize use in unallotted parcels and riparian exclosures as appropriate (Hawks Ranch Meadows, Marys River Exclosure 3, and Antelope Basin Exclosures 1-2)</li> <li>Reevaluate stream and springs within unallotted parcels and riparian exclosures in 3 years.</li> </ul>
Deeth	Mad Dog Cattle Co.  John M. Lasgoity	20,458	<ul style="list-style-type: none"> <li>Utilization objectives exceeded annually for perennial grasses</li> <li>Frequency objectives not met for most studies</li> <li>Water Quality Issues</li> <li>Riparian (PFC) Issues on springs and streams</li> <li>Heavy use of riparian species and hoof shear</li> <li>LCT Issues (tied to in-stream conditions)</li> </ul>	<ul style="list-style-type: none"> <li>Implement grazing management systems for North and South Deeth Units which incorporates rest, deferred use, and early use on riparian areas.</li> <li>Improve livestock distribution by fencing and water development.</li> <li>Authorize use in riparian exclosures as appropriate (i.e. Carlson Field #1)</li> <li>The main portion of Marys River Riparian Pasture (MRRP) will be closed to grazing until re-evaluation in 3 years.</li> <li>Early use (not to extend beyond 6/30) and late use (after 9/15) within the two fields on the Coyote Lake side of MRRP.</li> </ul>
Pole Creek	Mad Dog Cattle Co.  John M. Lasgoity	598	<ul style="list-style-type: none"> <li>Riparian (PFC) Issues on streams and a spring</li> </ul>	<ul style="list-style-type: none"> <li>Utilize the Pole Creek Allotment as a moving lane for livestock. Utilization by livestock will not exceed one week.</li> </ul>

Allotment Name	Permittee	Total Permitted Use (AUMs)	Resource Issues	Technical Recommendations
Stormy	Marys River Ranch	8,836	<ul style="list-style-type: none"> <li>Riparian (PFC) Issues on streams</li> <li>LCT Issues (Currant and Hanks Creek)</li> <li>Water Quality Issues</li> </ul>	<ul style="list-style-type: none"> <li>No specific grazing system will be developed for the Stormy Allotment. The permittee, Marys River Ranch, will be allowed to continue to implement the best management practices (BMPs) that they are currently applying.</li> <li>Grazing during March will only be authorized on fields that have been totally rested from the previous year. No use of these fields will be allowed for the rest of the grazing season for that year (per the BMPs established by the permittee).</li> <li>Any pasture used during May and/or June will receive a minimum 13 months rest prior to reuse (per the BMPs established by the permittee)</li> <li>Authorize use in Hawks Ranch Meadows (unallotted parcel) as appropriate.</li> </ul>



UNITED STATES  
DEPARTMENT OF THE INTERIOR  
BUREAU OF LAND MANAGEMENT  
ELKO FIELD OFFICE