



White Pine County Update to the Subcommittee on Public Lands

Presented by:

Laurie Carson, White Pine County Commissioner

&

Jeremy Drew, Principal Resource Specialist

Resource Concepts, Inc. Representing the County on Public Lands Issues

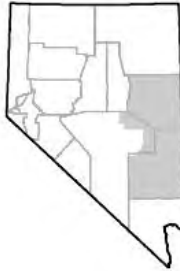
Major Public Land Issues in White Pine County, Categorized:

- Renewable Energy and Transmission
- Greater Sage-grouse
(BLM and Forest Service Management Plans)
- Wild Horses
- Water
- Watershed Restoration as Related to Wildfire
and Fuels Reduction
- Others:
 - Access
 - Mining
 - Exploration
 - Land Withdrawals & Special Designations

Renewable Energy & Transmission:

- 1 Existing and 3 Proposed Transmission Lines:
 - On-Line from Ely South (Existing)
 - SWIP North from Ely North (NEPA Complete)
 - Cross-Tie from Ely East (NEPA In Process)
 - Greenlink from Ely West (NEPA Pending)
- Associated Applications for Renewable Energy Development
 - Geothermal
 - Solar
 - Wind
 - Pumped Storage

Regional View



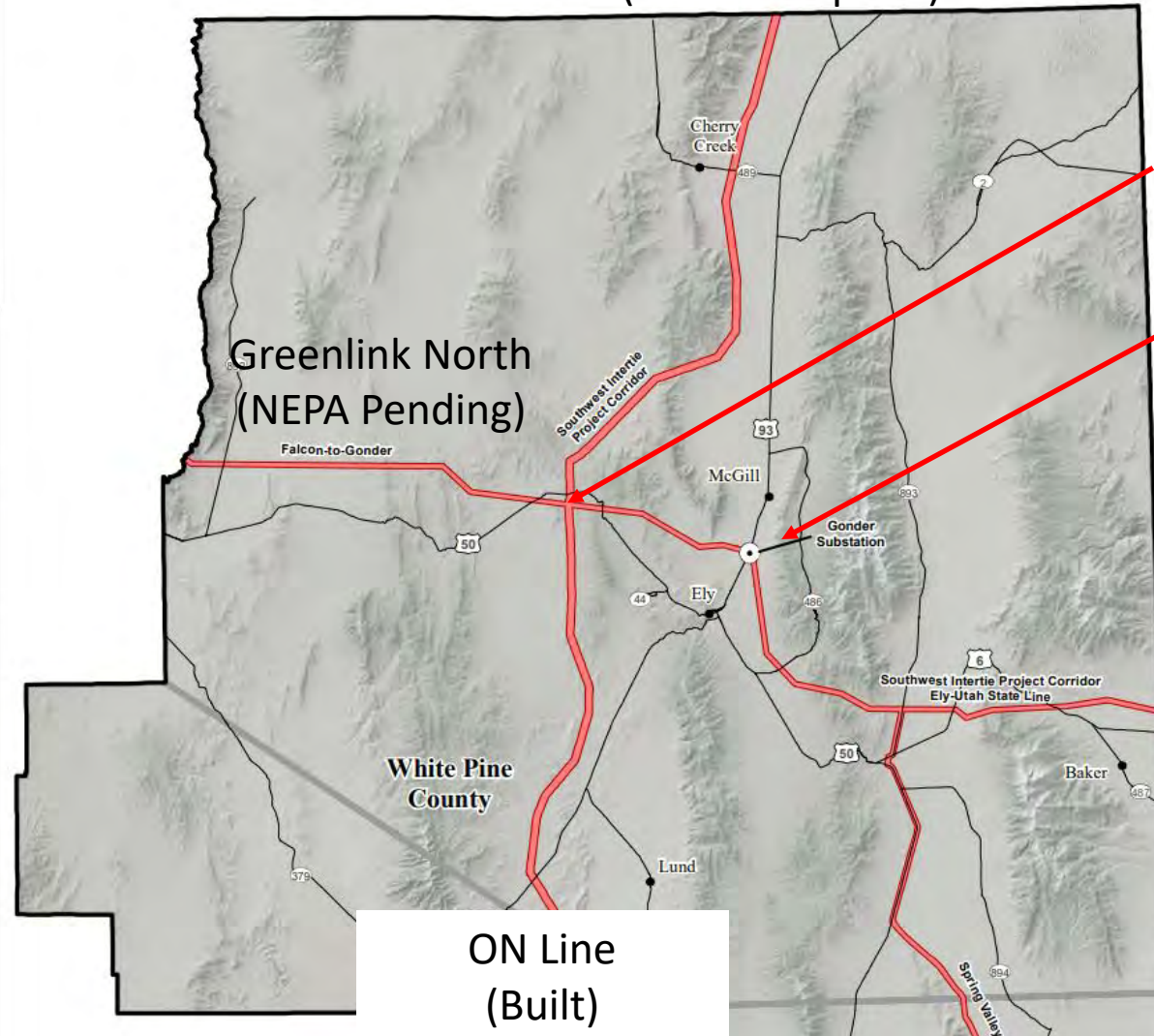
0 100 200
Miles

Legend

- Cities and towns
- Roads
- County boundary
- Proposed utility corridor

Note:
LCCRDA - Lincoln County
Conservation, Recreation, and
Development Act

SWIP North
(NEPA Complete)



Robinson
Substation (Built)

White Pine
Pumped Storage
(FERC Application)

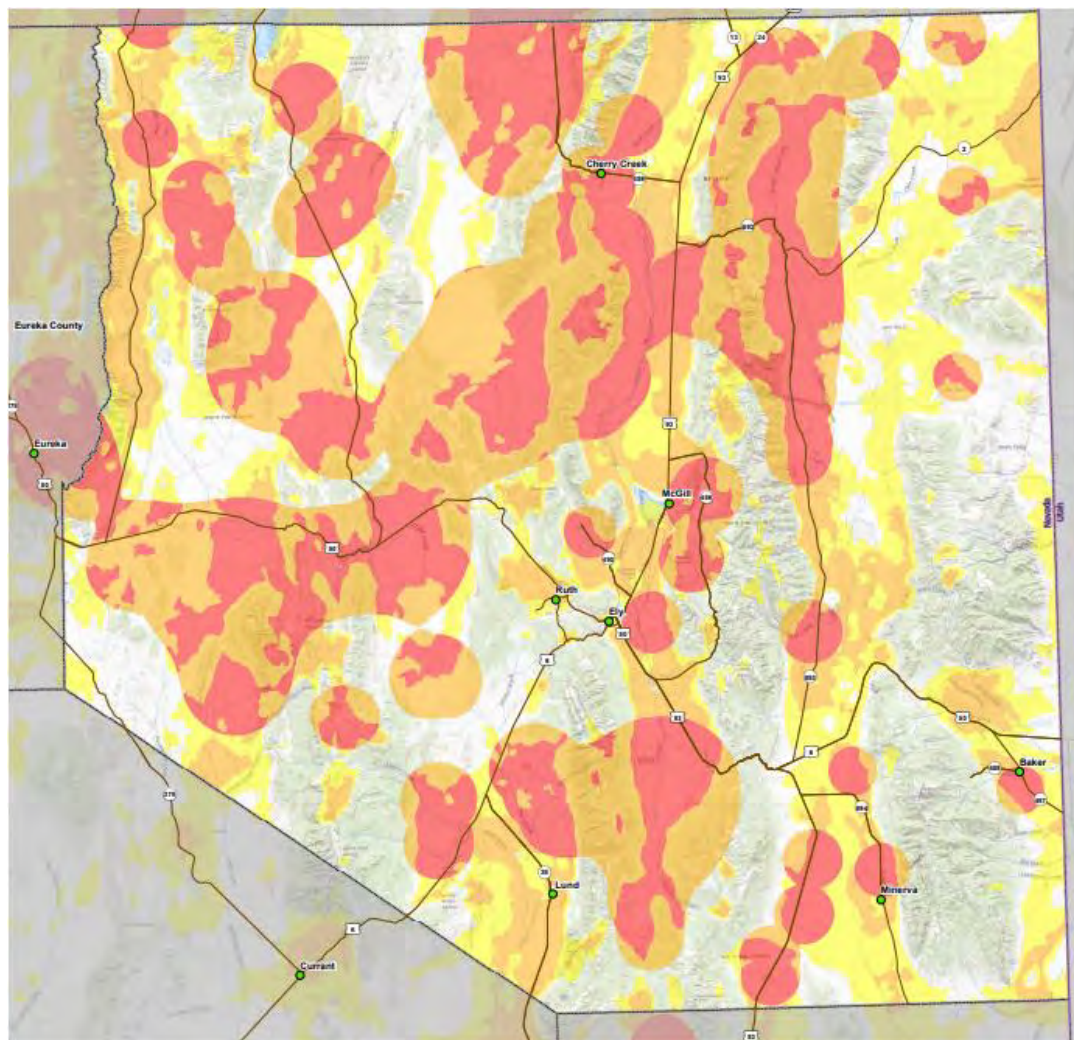
Cross-Tie
(NEPA In Process)

Greenlink North
(NEPA Pending)

ON Line
(Built)

Greater Sage-grouse (BLM & Forest Service Management Plans):

- New (3rd) BLM Range-wide Planning Effort Underway
- Inconsistencies with State & “Current” (2015) BLM Plans
- Conflicts with other Projects and Programs



Legend



Town / City



Major Road



County Boundary



State Boundary

2021 Sage-grouse Management Areas (State of Nevada)



PHMA (Priority)



GHMA (General)



OHMA (Other)

Wild Horses:

- The County supports wild horses on the range at sustainable levels.
- Recent levels are not sustainable, particularly coupled with recent drought.
- The County fully supports recent BLM and FS gathers and gather planning and would support additional funding from Congress to accelerate gathers.

Regional view



0 100 200
Miles

Legend

• Cities and Towns

— Roads

— County boundary

Wild horse herd management areas

Antelope

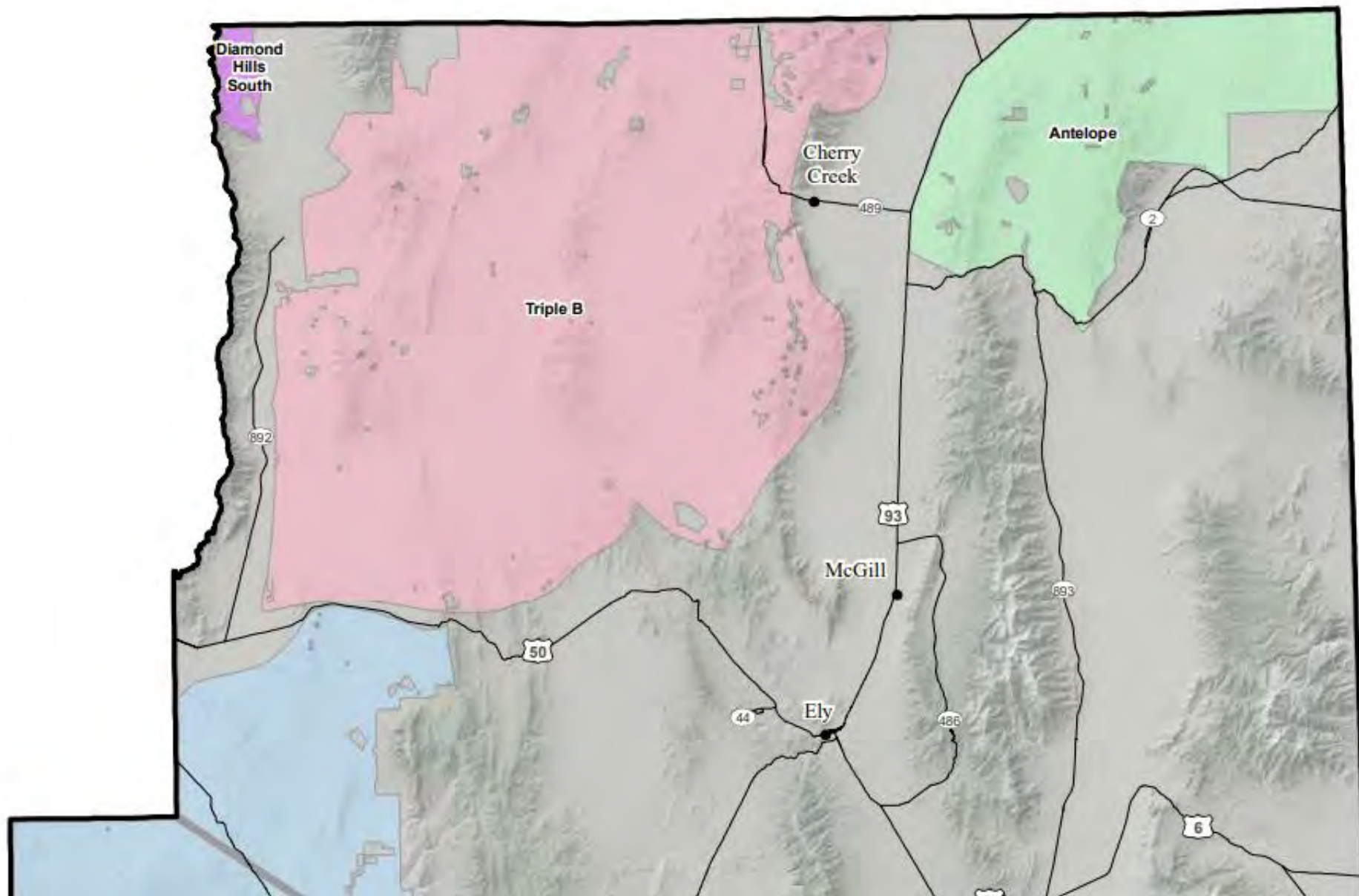
Diamond Hills South

Eagle

Pancake

Silver King

Triple B

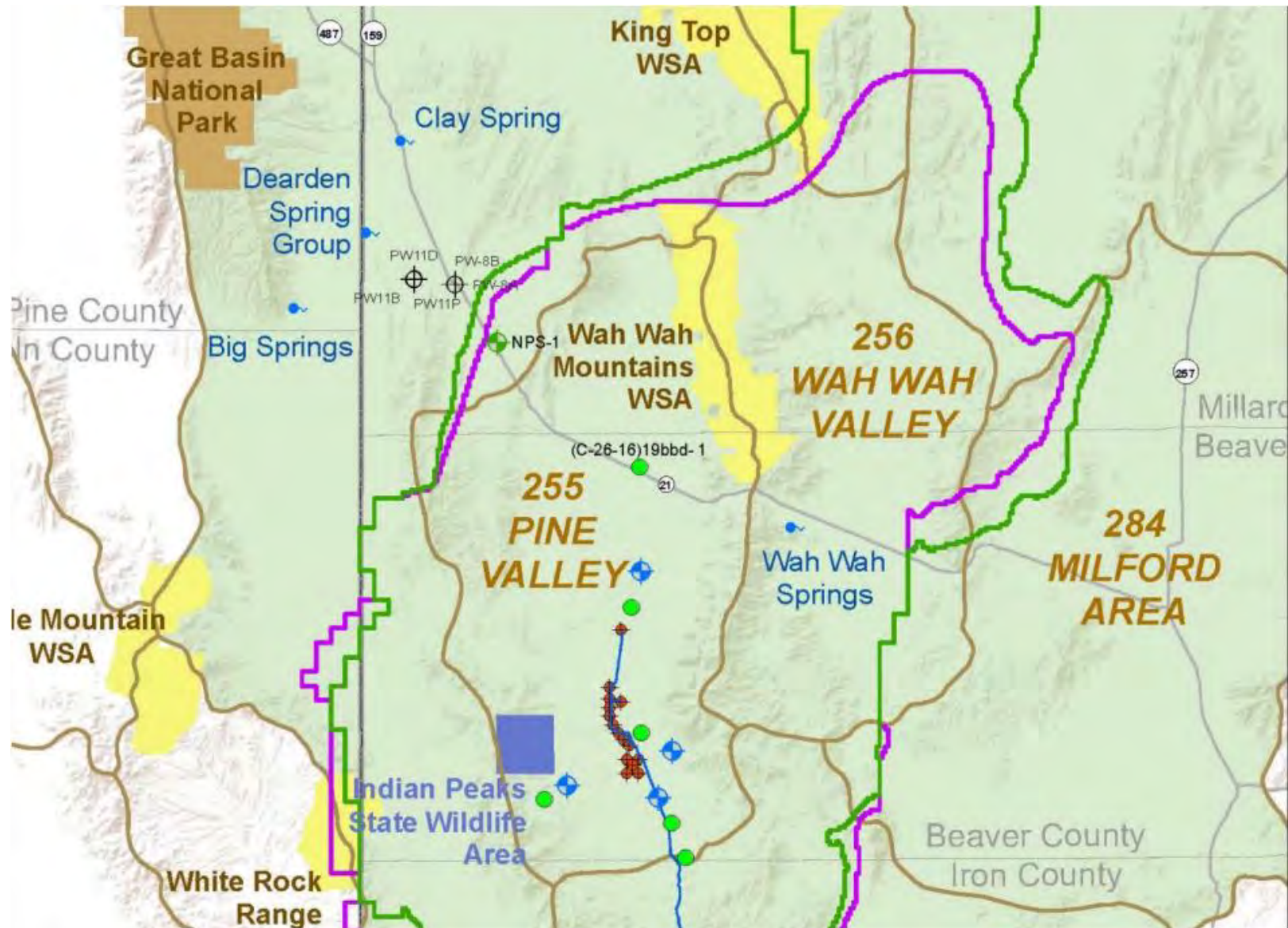


**From: “Out of Balance – The West’s Wild Horses”,
video online at:
www.nevadarangelands.org/documentaries**



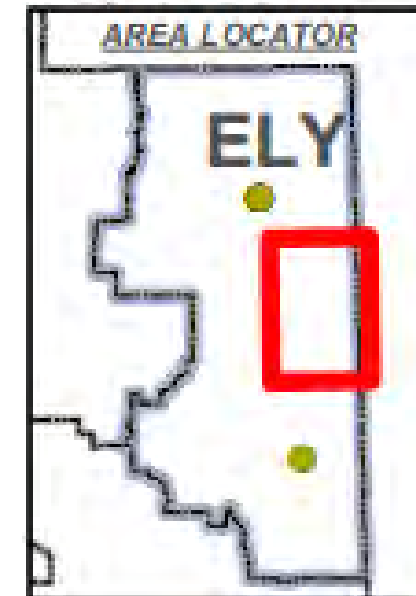
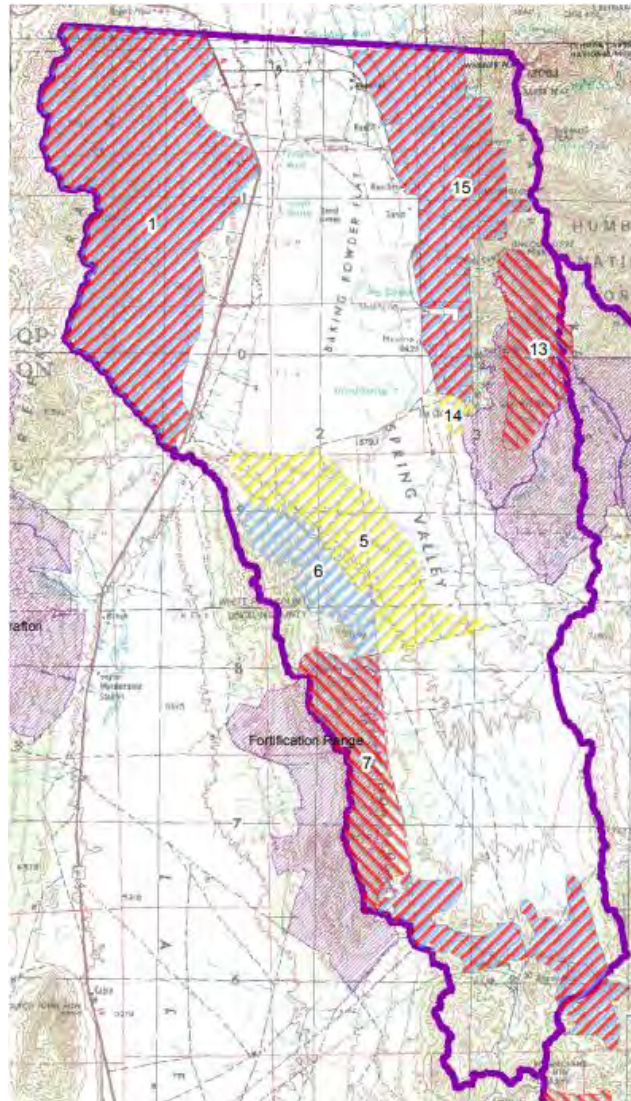
Water:

- The withdrawal of municipal applications from SNWA has allowed local projects to move forward.
- The County is concerned with the Pine Valley Water Project (groundwater export) in Utah adjacent to Snake Valley.
- The County continuously monitors water applications, regulations and use.



Watershed Restoration as Related to Wildfire and Fuels Reduction:

- Locally, the County has a very good working relationship with the BLM & Forest Service.
- Both have been tremendously proactive at large-scale (watershed-level) restoration and fuels reductions with funding support from SNPLMA.
- The County appreciates and supports these continued efforts.



South Spring Valley and Hamblin Valley Watersheds Vegetation Treatment Units - Proposed Action

Legend

- Chemical Halogeton Suppression
- Mechanical PJ Removal
- Mechanical and Prescribed Fire
- Prescribed Fire
- Mowing
- Watershed Boundary
- Private Land
- BLM Wilderness

No warranty is made by the Bureau of Land Management as to the accuracy, reliability, or completeness of these data for individual use or aggregate use with other data. Original data were compiled from various sources. This information may not meet National Map Accuracy Standards. This product was developed through digital means and may be updated without notification.

Map Produced by: Gloria Tibbetts
03/22/2012



- From: “Restoring Pinyon and Juniper Woodlands...”
video online at:
- www.rci-nv.com/nevada-pinyon-juniper-partnership



Other Issues: Access Mining Exploration Land Withdrawals & Special Designations

- Access to public lands is of paramount importance to the County:
 - Supports Multiple Use Management
 - Provides for Recreation
- Two Key Expansions to Existing Mines:
 - Robinson (EIS Complete)
 - Bald Mountain (EIS Beginning)
- Land Withdrawals & Special Designations
 - NASA Proposal in N Railroad Valley
 - Special Designations as Relates to:
 - National America the Beautiful (30x30) Program
 - BLM Statewide Resource Management Plan
- **Bottom Line: Local Government(s) need to be involved in all Public Land Projects & Planning Efforts**



Thank you for Coming
to White Pine County

We Invite Your
Questions

Presented by:

Laurie Carson, White Pine County Commissioner

&

Jeremy Drew, Principal Resource Specialist

Resource Concepts, Inc. Representing the County on Public Lands Issues