



# Numu Newe Conservation Proposal

Chairwoman Catherine Williams-Tuni,  
Leilah Shephard, THPO  
Fallon Paiute Shoshone Tribe

# Our Story



*Ki Na Soo Mu Wa Kwutu*  
Never To Be Forgotten

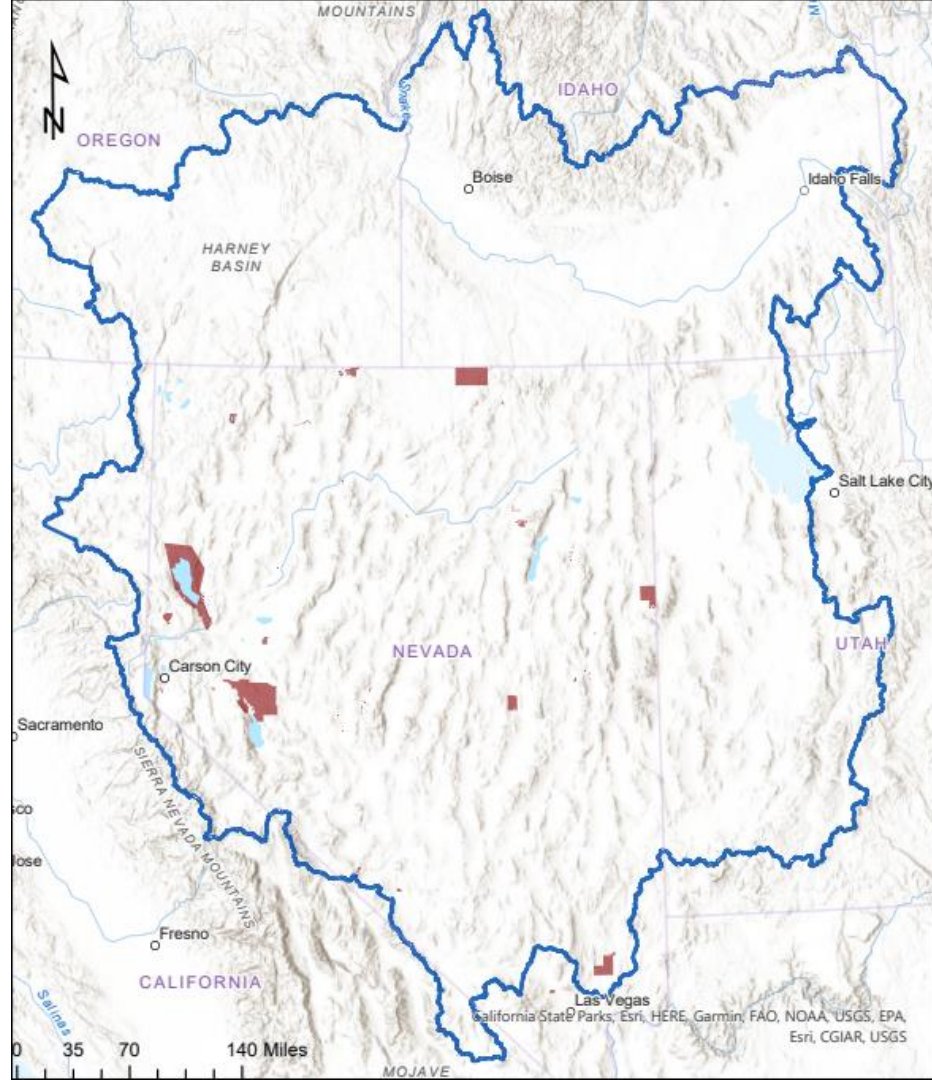
- The Paiute and Shoshone People – the Numu and Newe as we call ourselves – have lived and thrived across the western Great Basin since time immemorial, safeguarding lands, waters, and wildlife.
- For more than 10,000 years, we have hunted, prayed, and gathered medicine on the mountain peaks, valleys, playas, and wetlands of the Great Basin.
- Beginning in the late 19th century, our ancestors were forcibly removed from our traditional territories and moved onto small reservations. We rely on access to federal public lands to preserve our cultural and religious identity, and to continue our subsistence practices.



# Our Historic Homelands

## Paiute and Shoshone Traditional Territory

-  Paiute and Shoshone  
Traditional Territory
-  Nevada Indian  
Reservations and  
Colonies



# The Numu Newe Proposal

Our proposal is to protect key areas of the Paiute and Shoshone people's homelands, focused on the areas between the Reservations of the Fallon Paiute Shoshone, Yomba Shoshone, Lovelock Paiute, and Walker River Paiute Tribes.

- Important areas include the Stillwater Range, the Clan Alpines, and Monte Cristo Range.
- We would continue existing uses on the landscape, public access, hunting, and grazing at current levels.
- We would better protect cultural resources, and to the extent possible, help educate the public on the special history of these lands.
- We would provide our expertise in helping co-manage and protect these lands.





# The Threat

- The proposed Numu Newe Conservation Area is under threat from resource extraction, military training, vandalism, and looting.
- We believe that the earth contains spiritual power and was made perfectly by our Creator. We are connected to the native ecosystem—the plants and animals that have always sustained us.
- For thousands of years, we traveled across this landscape on a seasonal basis. This means that Numu Newe is home to widely distributed Tribal ceremonial sites, medicining areas, and burials.
- It is deeply challenging to convey the importance of cultural landscapes in a Euro-American framework, and we do not like to share our private family ceremonies. This makes it hard to protect the special value of the lands without a broad designation.

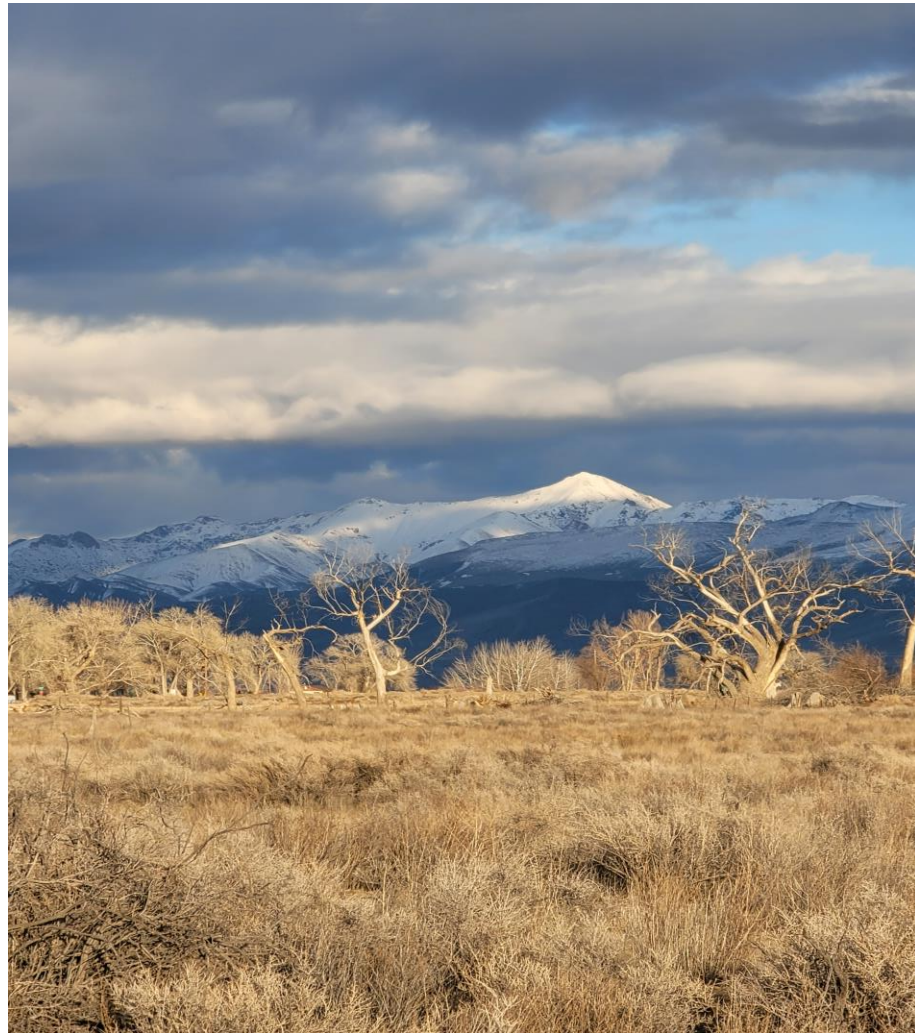


## Sites we're seeking to protect

---

Fox Peak—also known as Job's Peak—is the origin site of the Fallon Paiute-Shoshone people and the juncture of earth and sky. Our parent stones and spring are located near the peak.

The Peak, which rises from the Pine Nut Mountains—also called the Stillwater Range. The mountains sustain traditional subsistence practices.



Sites we're seeking to protect

---

---

# Grimes Point Archaeological Site

An abundance of carved rock art — called petroglyphs — cover the basalt boulders at Grimes Point. If you visit, please treat this sacred site respectfully and refrain from touching or damaging the petroglyphs in any way.





# Wildlife Habitat

The proposed Numu Newe Conservation Area is rich in wildlife habitat, providing refuge for a multitude of important species. The wetlands of the valley each year play host to migrating birds. The alpine uplands provide habitat for bighorn sheep and other big game.





## Pony Express Stations

Just to the east of Fallon lie the Sand Springs Pony Station and the Cold Springs Pony Station, two of the 186 stops along the Pony Express mail delivery route from Missouri to California. The stations are in ruins now, but the view still looks much as it did when the stops debuted in 1860.



# Tribal Co-Management

- The Fallon Paiute Shoshone Tribe is requesting a co-management arrangement with other local Tribes, the Bureau of Land Management and other federal partners to support the management and care of Numu Newe.
- There are a number of policy tools that could protect Numu Newe. We are working with county, state, and federal partners on a path for legislative protections, like a national conservation area or a tribal cultural area. We also support President Biden using tools available, including national monument designation for Numu Newe, to safeguard this important landscape.
- In keeping with the Biden-Harris administration's goals and the trust responsibilities of the U.S government, we envisions co-stewardship involving a commission of regional tribes that informs management of Numu Newe.





## Why Protect Numu Newe?

- The potential destruction and loss of access to these sacred public lands is an existential threat to Paiute and Shoshone People.
- This proposal will help accomplish President Biden's initiatives to conserve 30 percent of U.S. lands by 2030.
- Recognizing our history on these lands helps preserve and honor an important part of our region's and Nation's history.
- Recognition and protection of these lands will benefit all the people of Nevada.