

This response was prepared for Todd Butterworth, Nevada Legislative Counsel Bureau

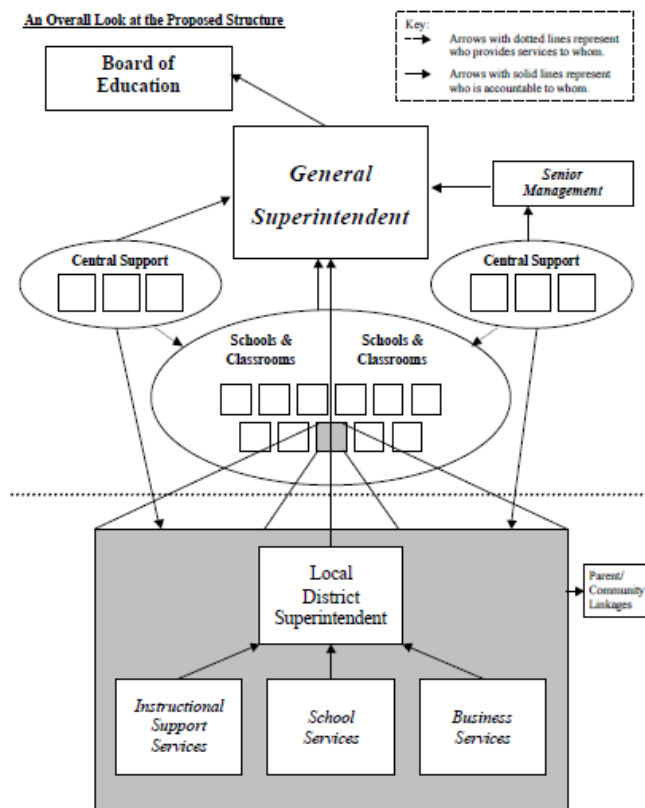
Your Question:

You asked for information about school district deconsolidation, specifically the reorganization of the Los Angeles Unified School District (LAUSD). Please note that all of the LAUSD documents referred to in this response are attached to the same email that delivered this memorandum (see Attachments A through D).

Our Response:

In April 2000, the LAUSD adopted a plan to divide the district into 11 local districts (see Attachment A). The goal of the plan was to improve student achievement by making LAUSD “more responsive to the parents and communities, more streamlined and efficient in its use of public resources, and more focused on getting results.” The plan included three fundamental changes to the district:

- Creation of 11 largely autonomous local districts, each lead by a local district superintendent, and creation of Local District Parent/Community Advisory Councils.
- A reconstitution of the central office structure to provide tactical support, services and compliance monitoring functions for the 11 districts.
- A unified mission and focus on reading.

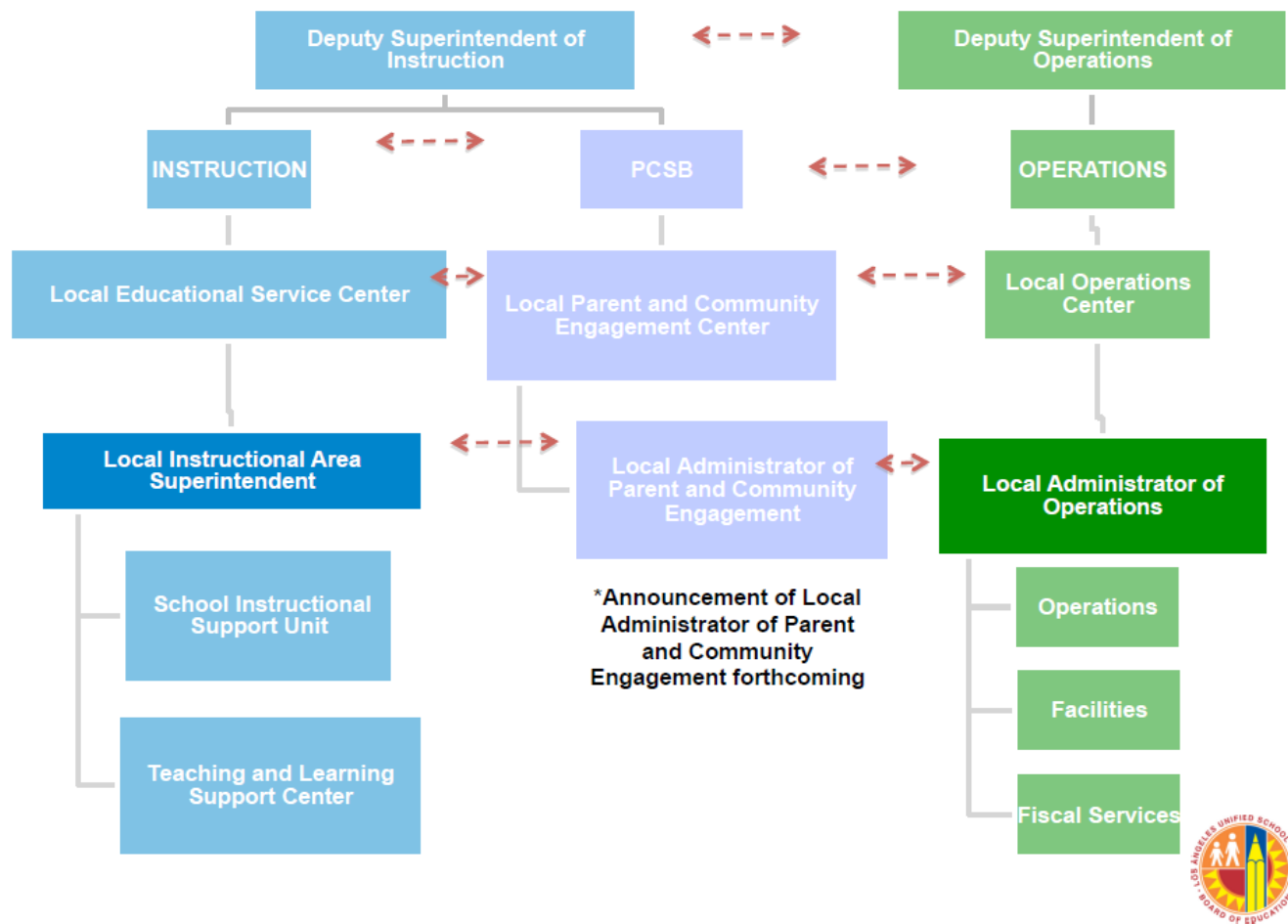


Source: *Eleven Local Districts, One Mission: A Multiple District Plan for Transforming the Los Angeles Unified School District*, submission to the Los Angeles Board of Education, March 14, 2000. (Attachment A)

The implementation timetable for the plan was short. The LAUSD Board of Education received a draft of the plan at a January 2000 meeting. Over the next two months, the board took comments from citizens, parents, students, teachers, administrators, district employees, community leaders, business people, union representatives, and others via email, phone, letters, comments at public meetings, and personal conversations. The final plan was submitted to the board on March 14, 2000, and adopted on April 11, 2000. After the April adoption, 81 days were scheduled for implementation (see Attachment A, page 10). At some point in 2004, the number of local districts was reduced from 11 to eight (see Attachment B, which is the only documentation of this change provided to me by LAUSD).

In 2012, the configuration was changed once again, with a shift from local districts to regional Education Service Centers (see Attachment C). One of the five ESCs was the [Superintendent's Intensive Support and Innovation Center](#), which served "schools doing the most challenging work" throughout LAUSD.

Structure: Overview



Finally, in July 2015, the most recent restructuring occurred (see Attachment D), with a shift away from Education Service Centers and the Intensive Support and Innovation center. The superintendent created six geographically based regions led by area superintendents.