

MONICA GARCIA, PRESIDENT  
 TAMAR GALATZAN  
 BENNETT KAYSER  
 MARGUERITE POINDEXTER LAMOTTE  
 NURY MARTINEZ  
 RICHARD A. VLADOVIC, Ed.D.  
 STEVEN ZIMMER



Administrative Office  
 333 South Beaudry Avenue, 24<sup>th</sup> Floor  
 Los Angeles, California 90017  
 Telephone: (213) 241-7000  
 Fax: (213) 241-8442

JOHN E. DEASY, Ph.D.  
 SUPERINTENDENT OF SCHOOLS

April 26, 2012

Dear LAUSD family,

Every day we work together to create a better district, one centered on teaching and learning so that all of our youth achieve. The new reorganization of local districts into Local Education Service Centers allows us to realign our energies so we have a laser-like focus on instruction while we separately provide our schools with strong support in the areas of operations and parent and community engagement. As such, I am pleased to announce my decisions for the positions of Local Instructional Area Superintendents and Local Administrator of Operations for the new Local Education Service Centers:

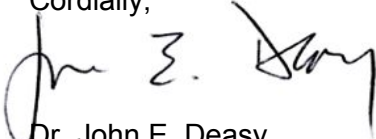
| <b>Local Education Service Centers</b>                          |  |  |
|---|--|--|
|   | <b>Local Instructional Area Superintendents</b>  | <b>Local Administrator of Operations</b>   |
| NORTH REGION  | Linda Del Cueto, who currently serves as Local District 1 Superintendent.                                      | Juan Flecha, who currently serves as a secondary principal leader in Local District 1.         |
| SOUTH REGION  | Dr. Robert Bravo, who currently serves as a Senior Coordinator in the Innovation and Charter Schools Division. | James Noble, who currently serves as a secondary principal leader in Local District 3.         |
| EAST REGION   | Roberto Martinez, who currently serves as Local District 5 Superintendent.                                     | Rowena Lagrosa, who currently serves as superintendent of Local District 6.                    |
| WEST REGION   | Cheryl Hildreth, who currently serves as a Director in Local District 1.                                       | Jan Davis, who currently serves as administrative coordinator, Secondary Programs, Operations. |
| Superintendent Intensive Support and Innovation Center (ISIC)*: | Tommy Chang, who currently serves as a Special Assistant to the Superintendent.                                | Michael Hopwood, who currently serves as an Operations coordinator in Local District 7.        |

*\*The Superintendent Intensive Support and Innovation Center (ISIC) will service various campuses across the district, including Partnership, Pilot, and Public School Choice schools.*

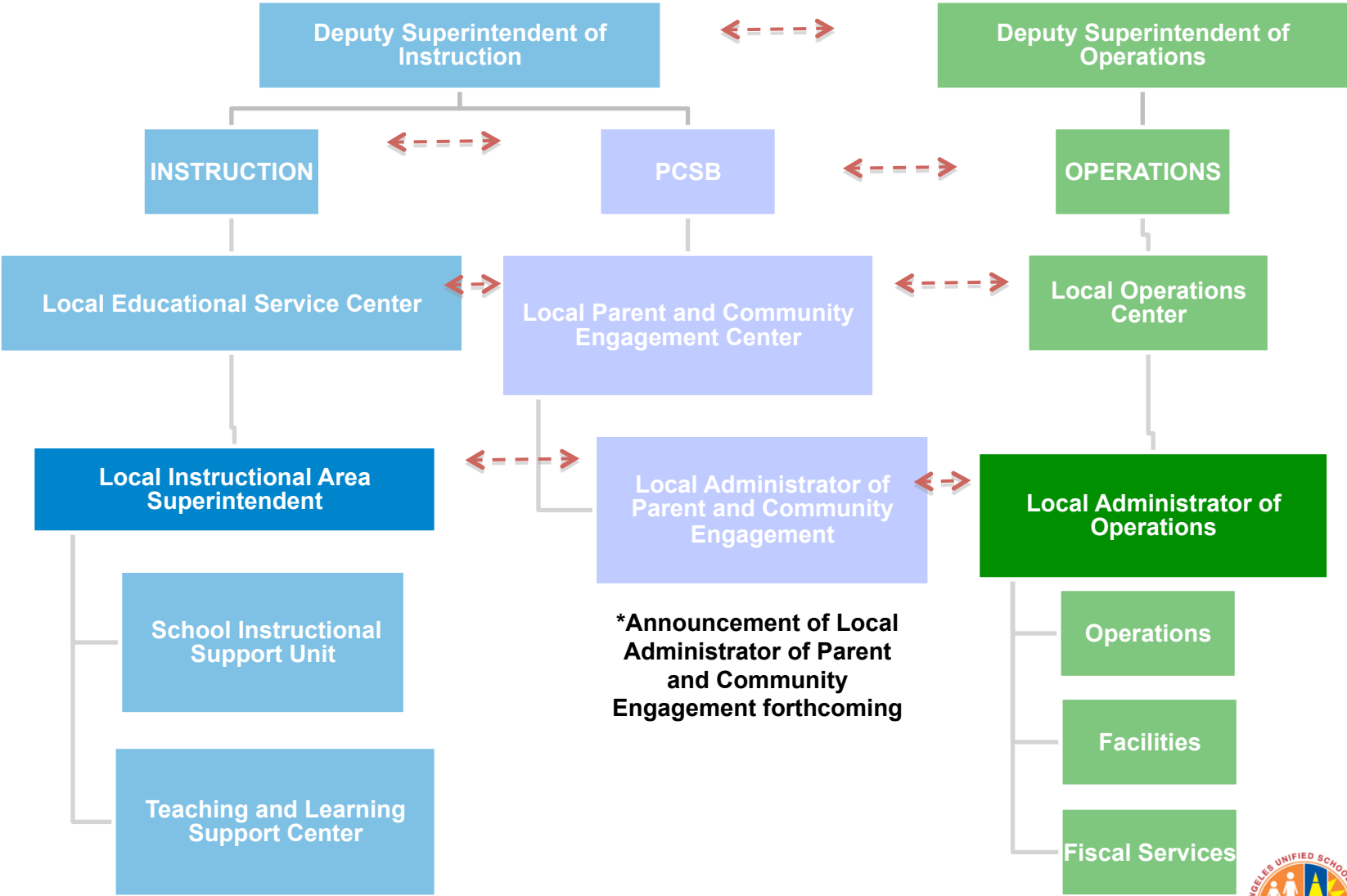
I am grateful for the leadership, dedication and professionalism of those who have served our schools and communities; they will remain an important part of our LAUSD community.

I interviewed a number of exceptional candidates for these positions and I found talent throughout our organization. I am confident that we are moving in the best direction forward for our students and their families so all youth can achieve.

Cordially,

  
 Dr. John E. Deasy  
 Superintendent

# Structure: Overview

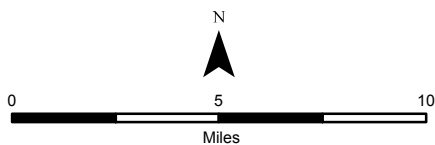


# EDUCATIONAL SERVICE CENTER

- ▲ Existing High School\*
- + Charter High School\*
- △ Planned High School
- █ Educational Service Center
- ▭ High School Boundary
- ▭ LAUSD Boundary

- \*Color fill represents school performance
- █ Excelling
  - █ Achieving
  - █ Service & Support
  - █ Watch
  - █ Focus
  - █ N/A

Note: The schools shown on this map represent the residence based high school attendance areas. The current and planned by-application high schools are not shown. The Belmont Zone includes Belmont HS, Contreras LC, Royal LC, and Cortines School of Visual and Performing Arts campuses.



Copyright © 2011. All Rights Reserved.  
The information contained herein is the proprietary property of the following owner and may not be reproduced except as licensed by the Los Angeles Unified School District

Prepared by Master Planning and Demographics Branch  
Facilities Services Division

Source Data: Facilities GIS Database

MPD-2422  
February 2012



## NORTH

## WEST

## EAST

## SOUTH

[Click here for more information on School Performance Framework](#)

