

CHART 1Q
Statewide Total Percentage Fee Collections and
Percentage Fee Collections from Taxable Gaming Revenue
Fiscal Year Tax Collection Basis: 1993:3rd Quarter - 2023:1st Quarter

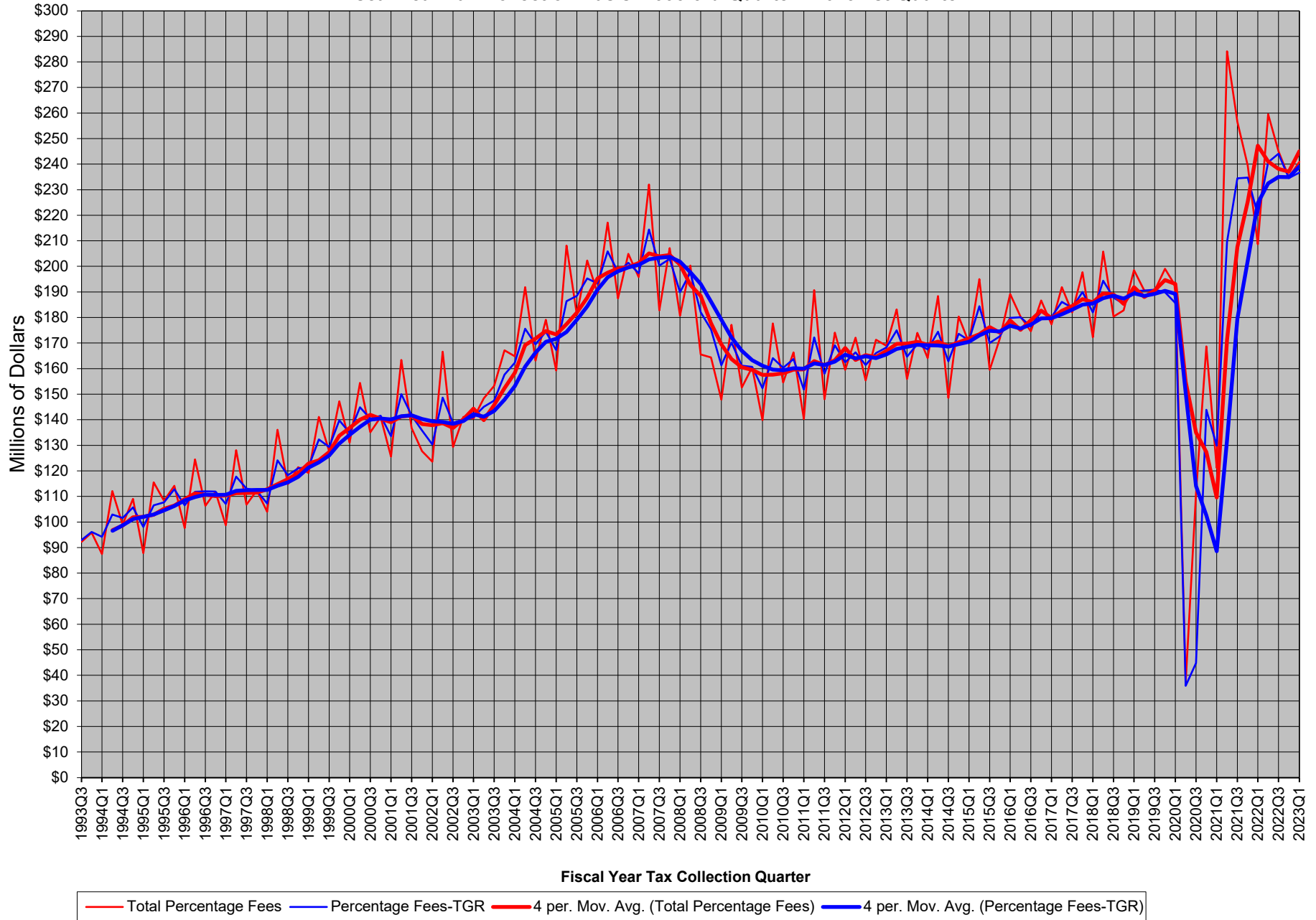


CHART 2Q
Comparison of the Growth in Statewide Total Percentage Fee Collections and Percentage Fee Collections from Taxable Gaming Revenue - Quarter versus Same Quarter Year Ago
Fiscal Year Tax Collection Basis: 1993:3rd Quarter - 2023:1st Quarter

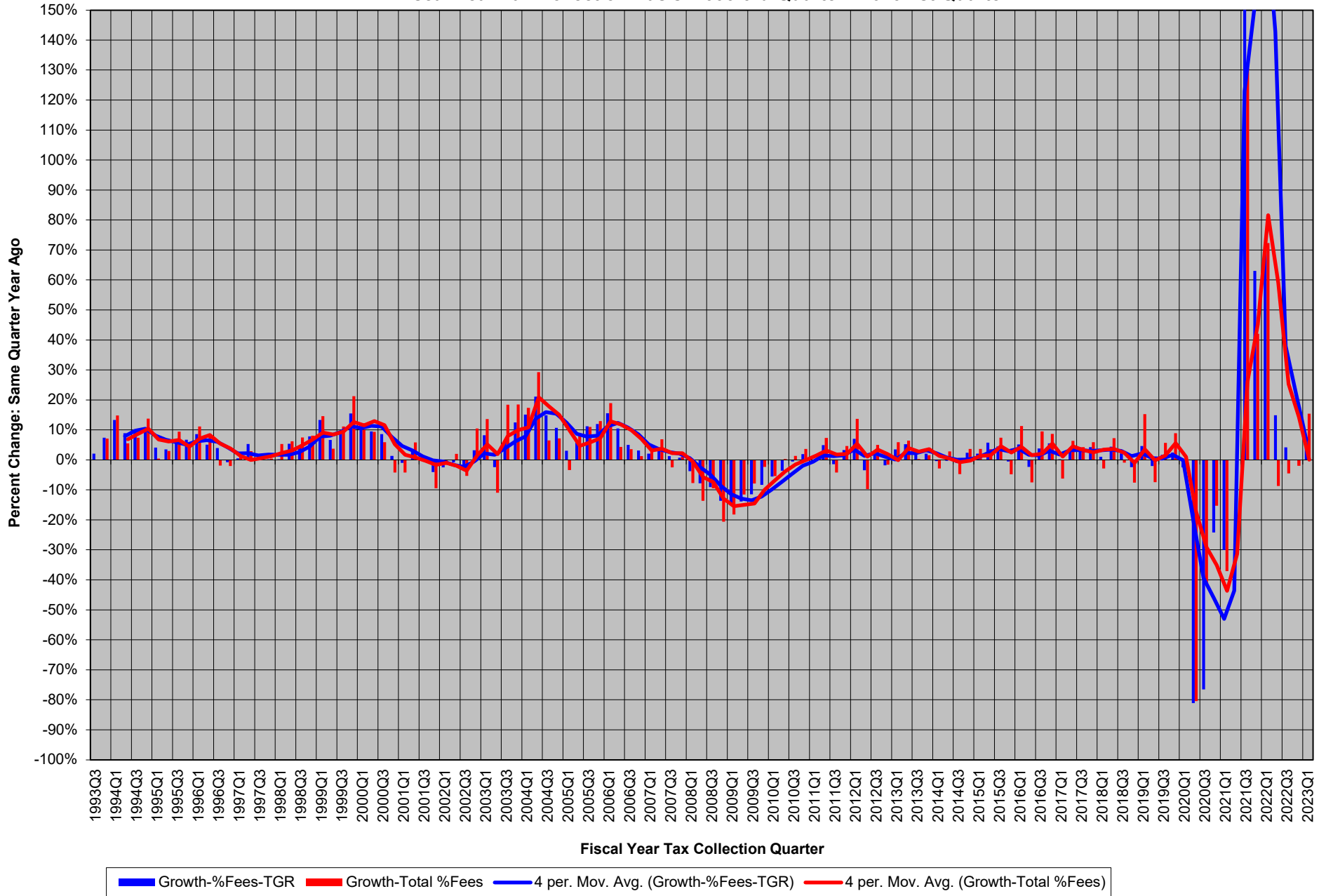


CHART 3Q
Statewide Estimated Fee Adjustment by Quarter and Cumulative Fiscal Year-to-Date by Fiscal Year
Fiscal Year Tax Collection Basis: 1993:3rd Quarter - 2023:1st Quarter

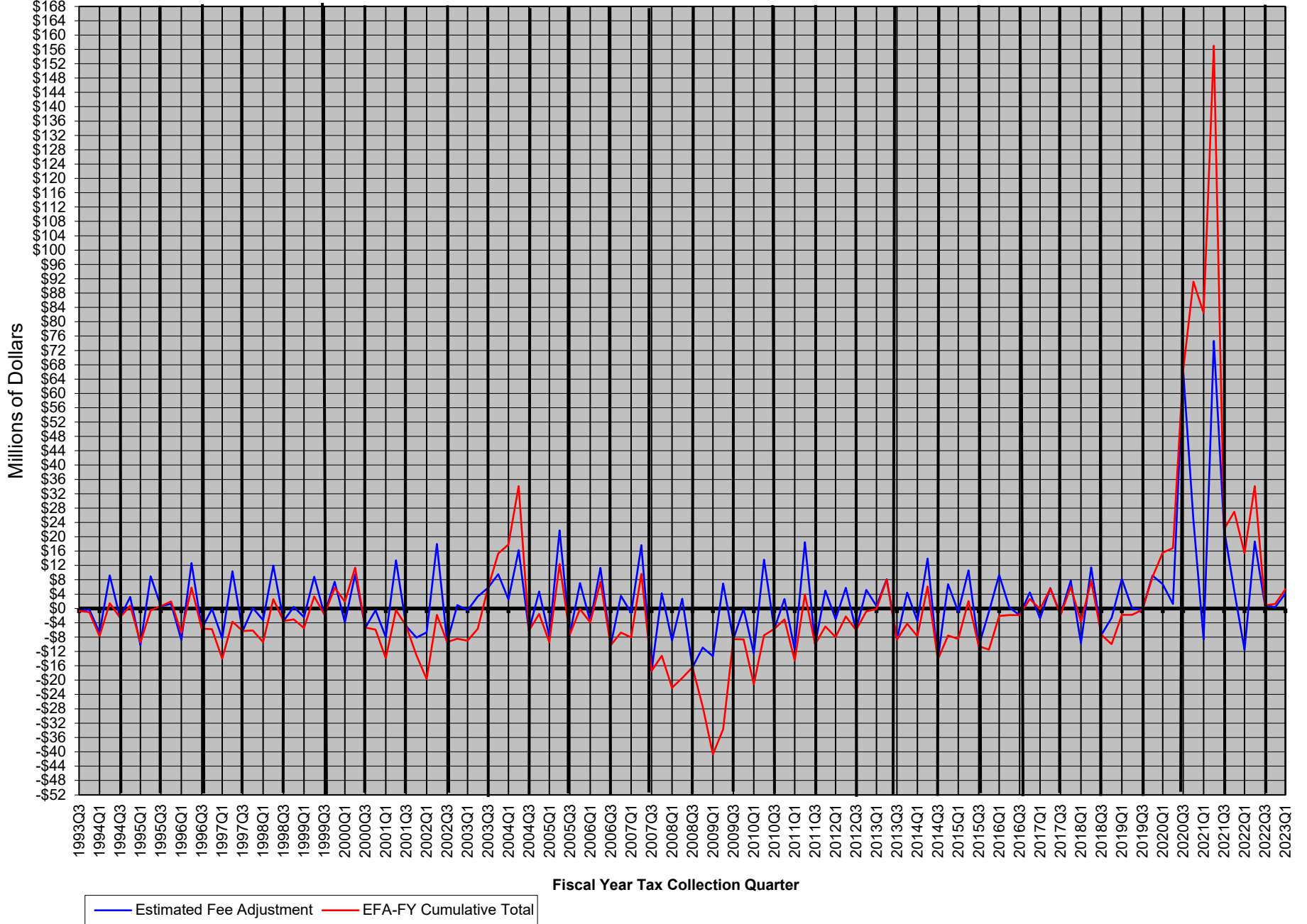


CHART 4Q
Statewide Total Win and Taxable Gaming Revenue
Fiscal Year Tax Collection Basis: 1993:3rd Quarter - 2023:1st Quarter

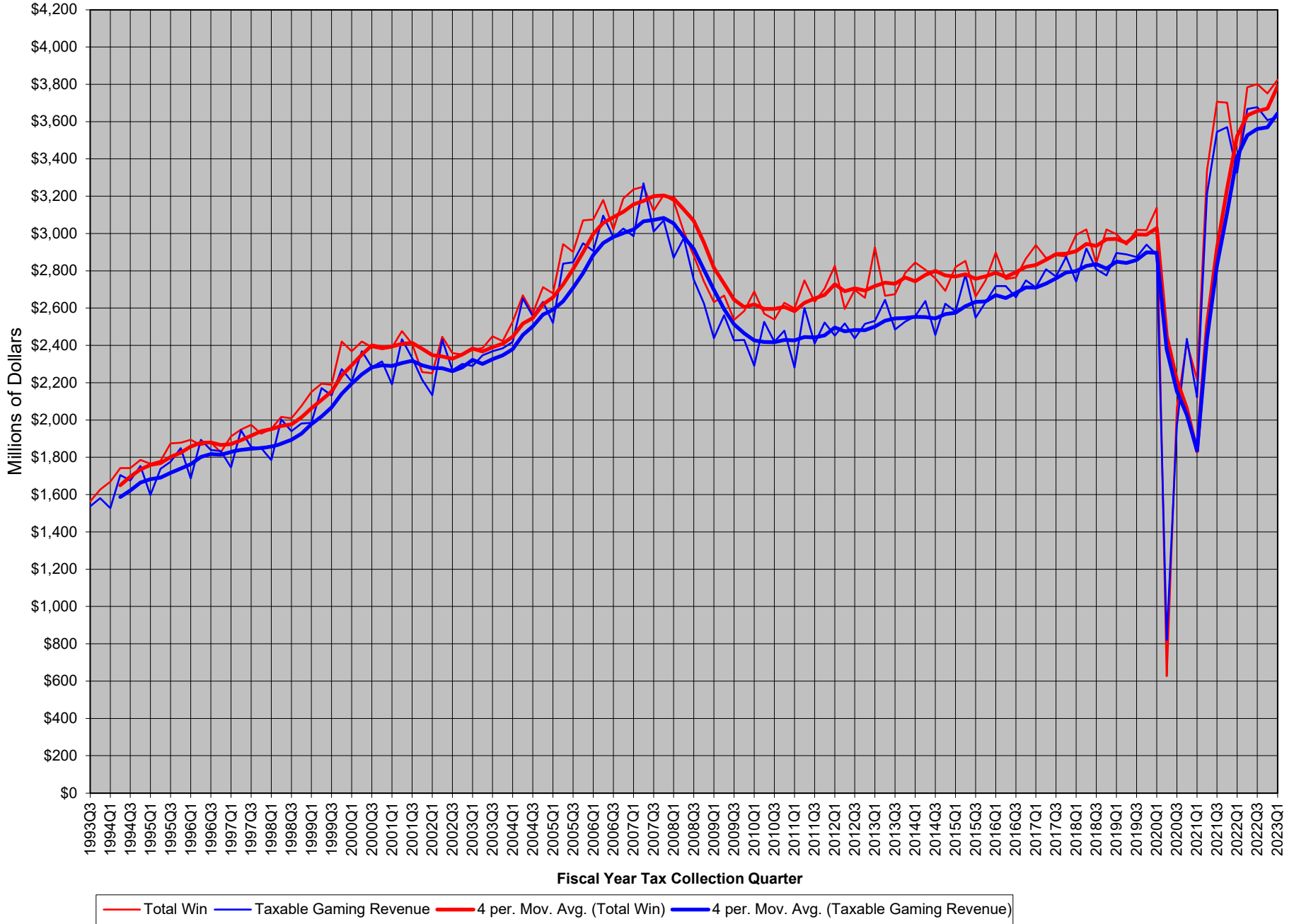


CHART 5Q
Comparison of the Growth in Statewide Total Win & Taxable Gaming Revenue-Quarter versus Same Quarter Year Ago
Fiscal Year Tax Collection Basis: 1993:3rd Quarter - 2023:1st Quarter

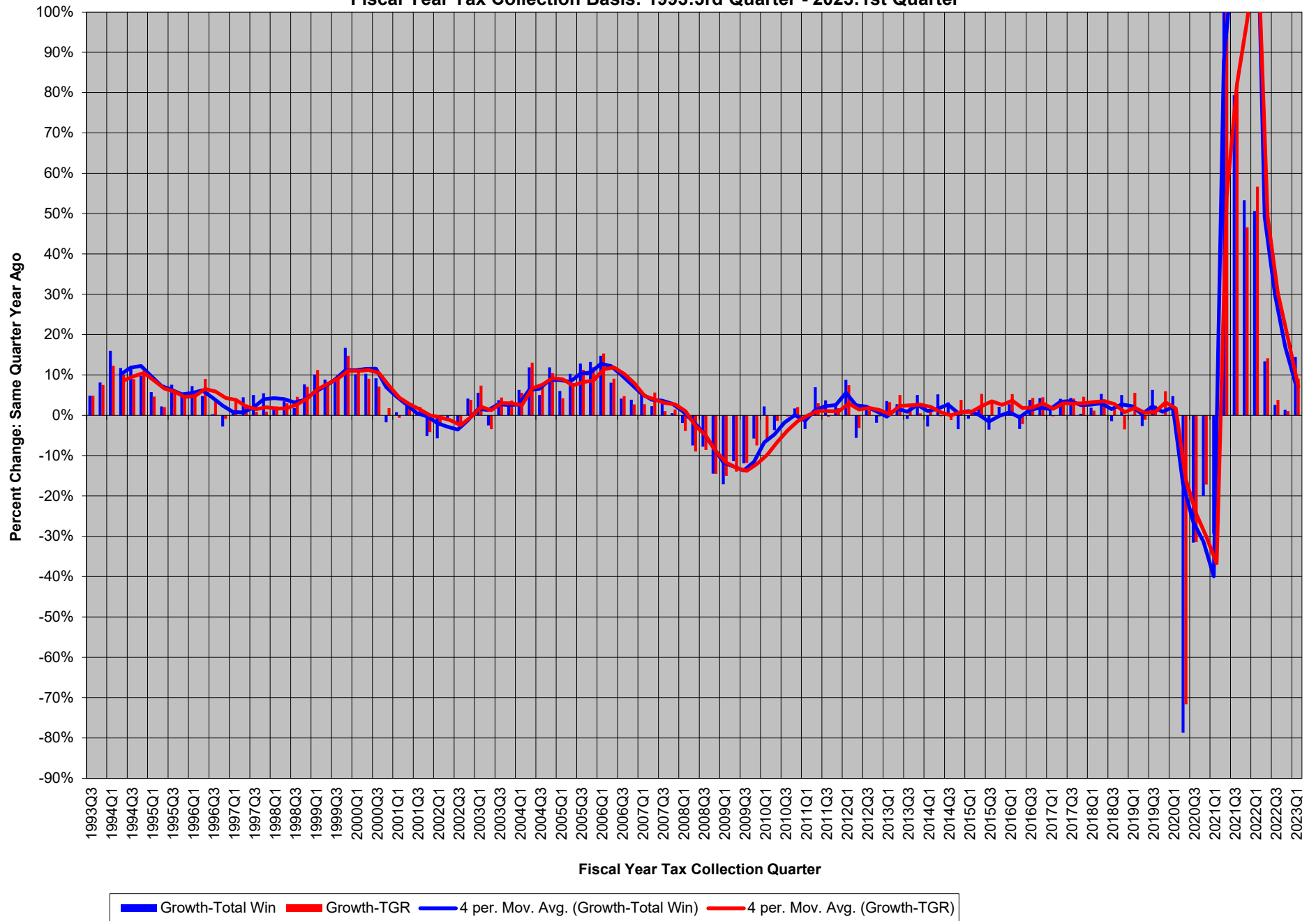


CHART 6Q
Statewide Ratio of Taxable Gaming Revenue to Total Win and Cummulative Fiscal Year-to-Date Ratio by Fiscal Year
Fiscal Year Tax Collection Basis: 1993:3rd Quarter - 2023:1st Quarter

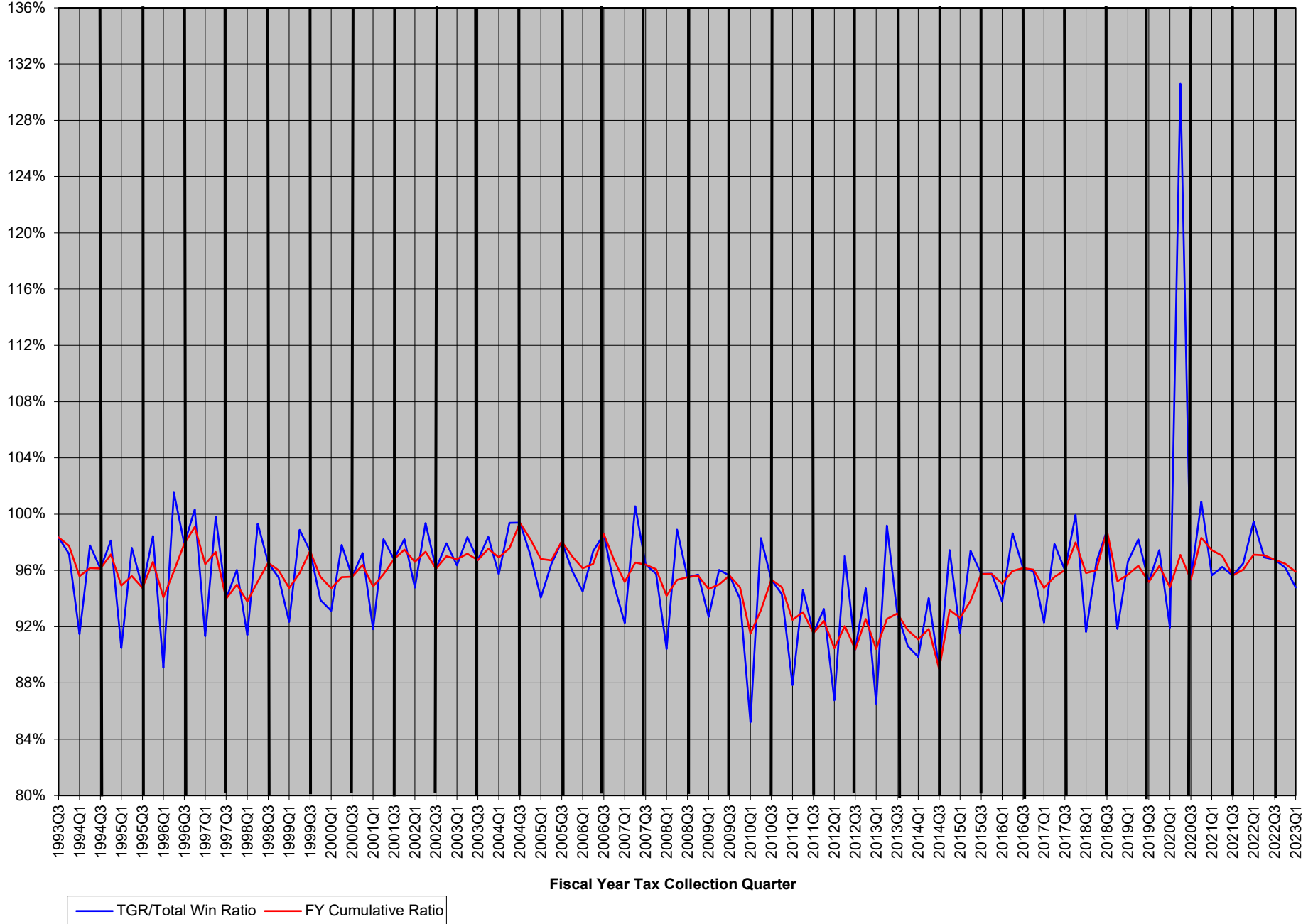


CHART 7Q
Statewide Average Tax Rate (Percentage Fees from TGR/Taxable Gaming Revenue (TGR))
Fiscal Year Tax Collection Basis: 1993:3rd Quarter - 2023:1st Quarter

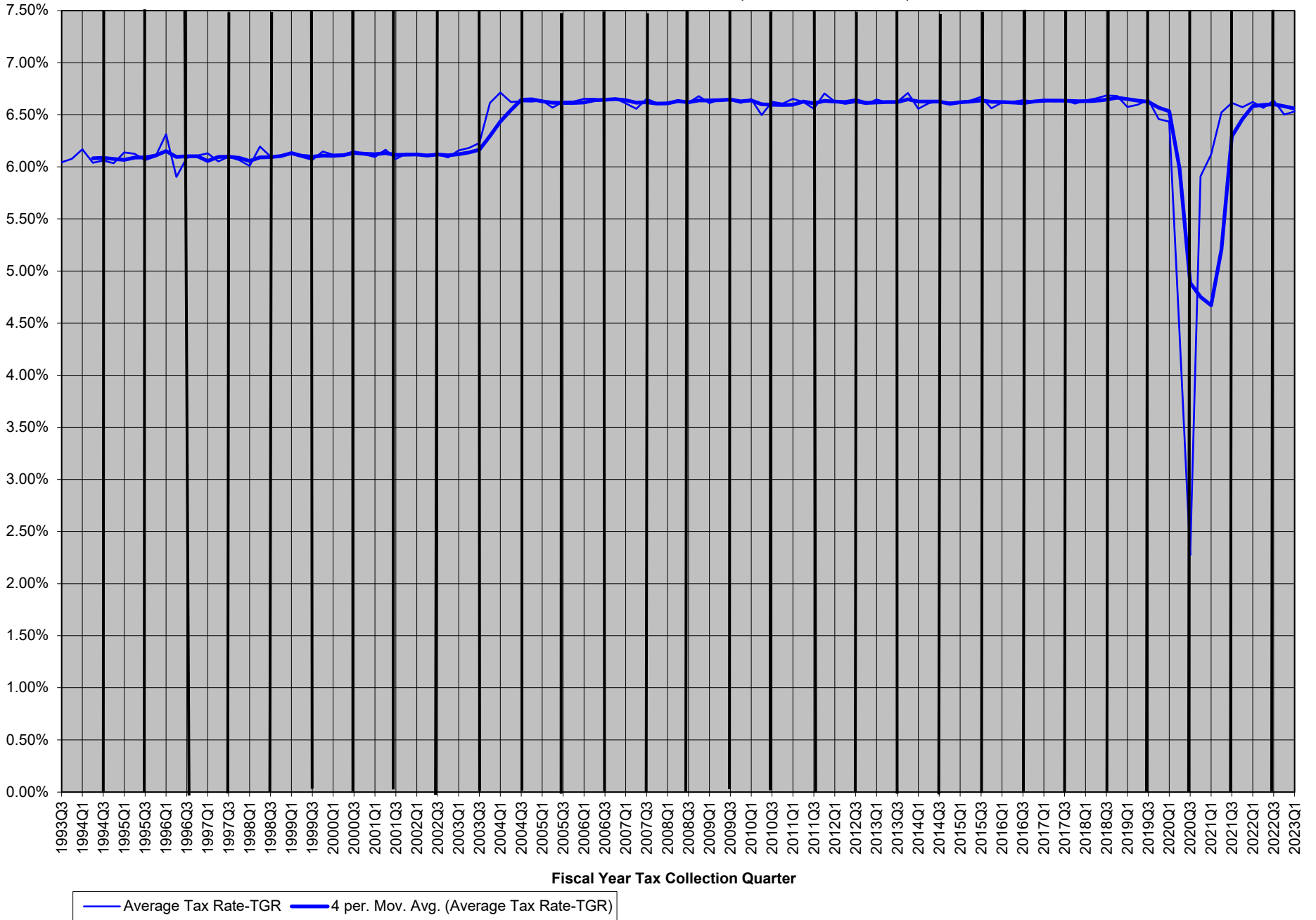


CHART 8Q
Statewide Total Win, Slot Win and Table Games Win
Fiscal Year Tax Collection Basis: 1993:3rd Quarter - 2023:1st Quarter

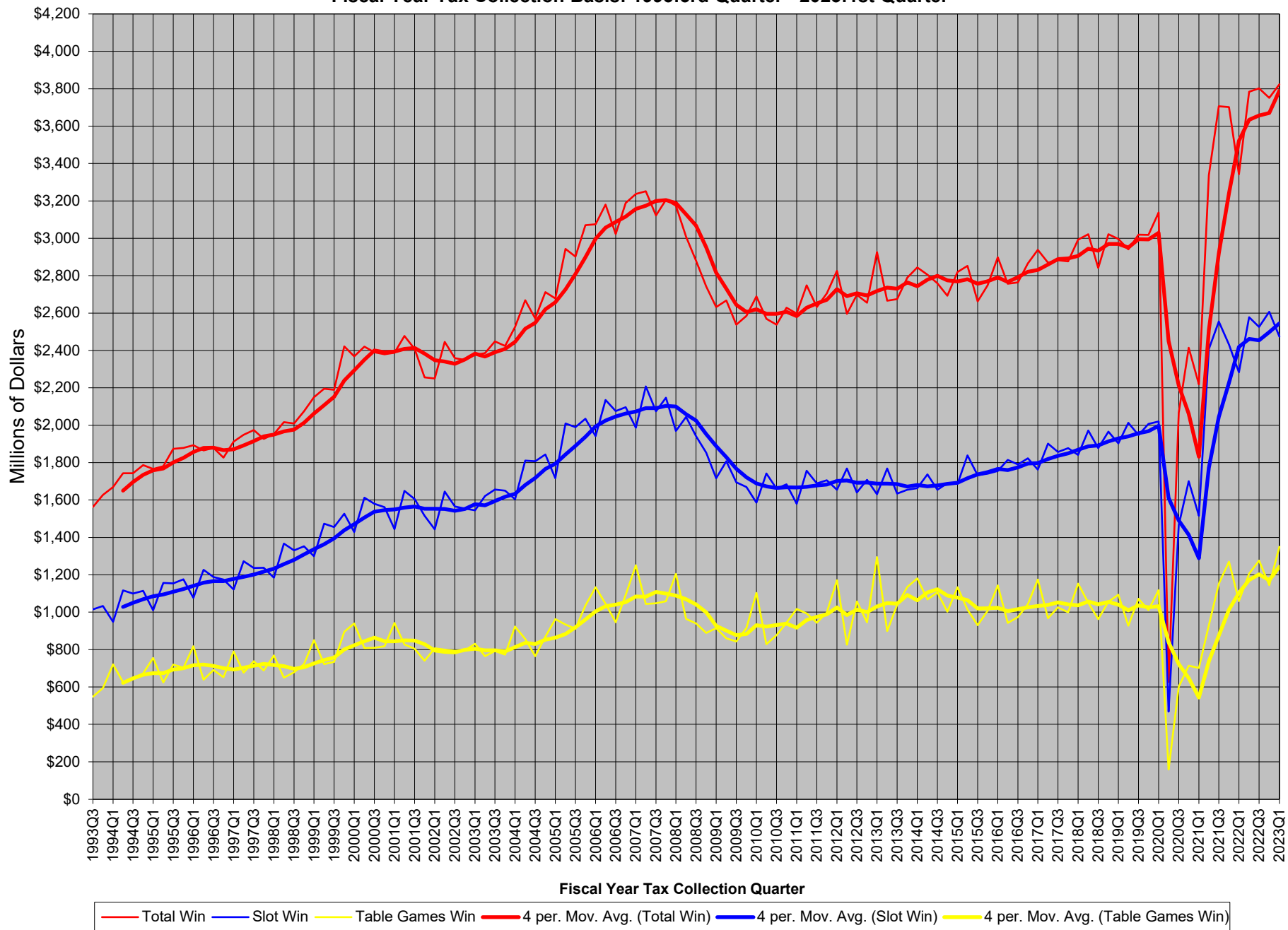


CHART 9Q
Statewide Total Win
Fiscal Year Tax Collection Basis: 1993:3rd Quarter - 2023:1st Quarter

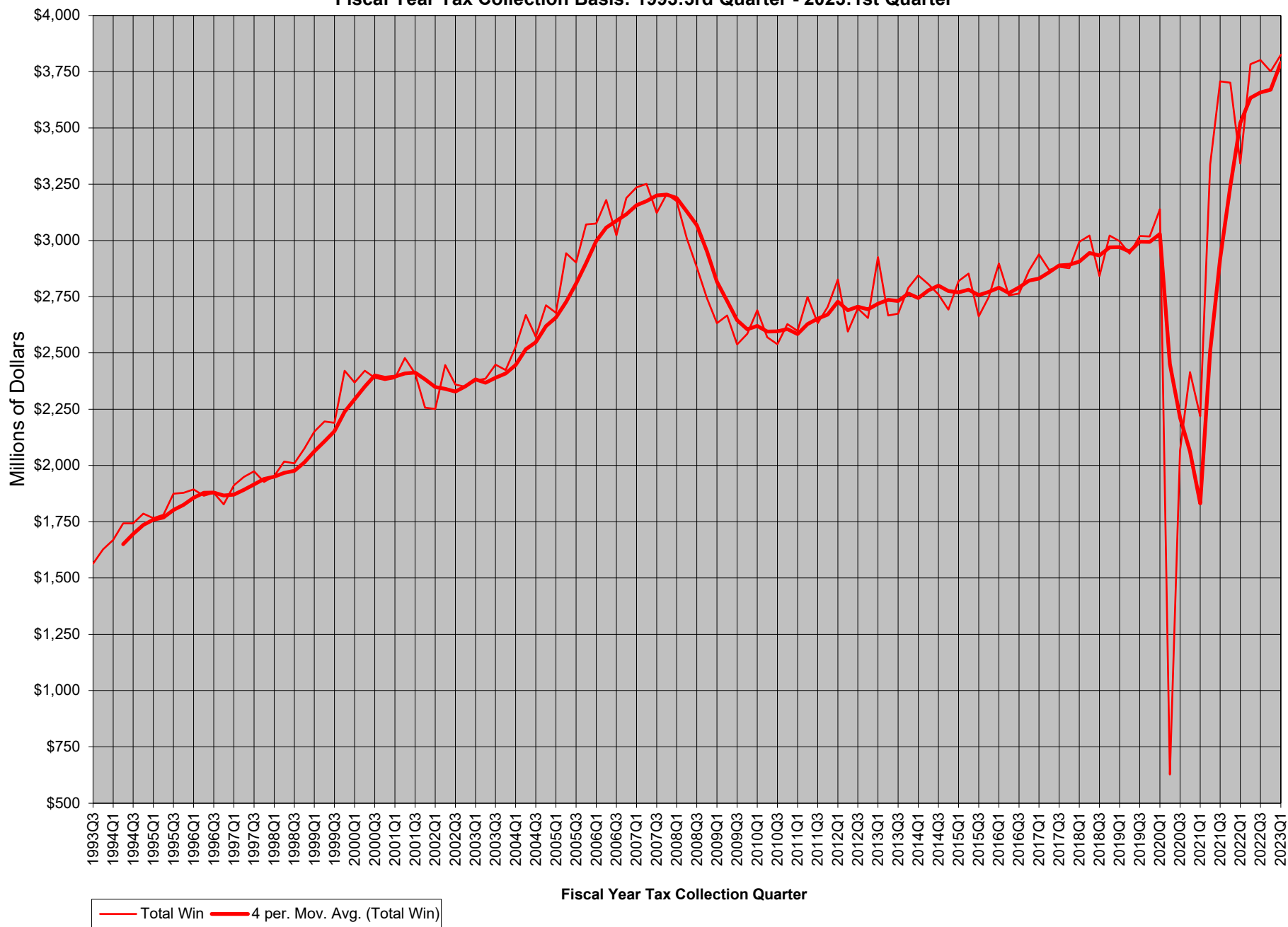


CHART 10Q
Statewide Slot Win
Fiscal Year Tax Collection Basis: 1993:3rd Quarter - 2023:1st Quarter

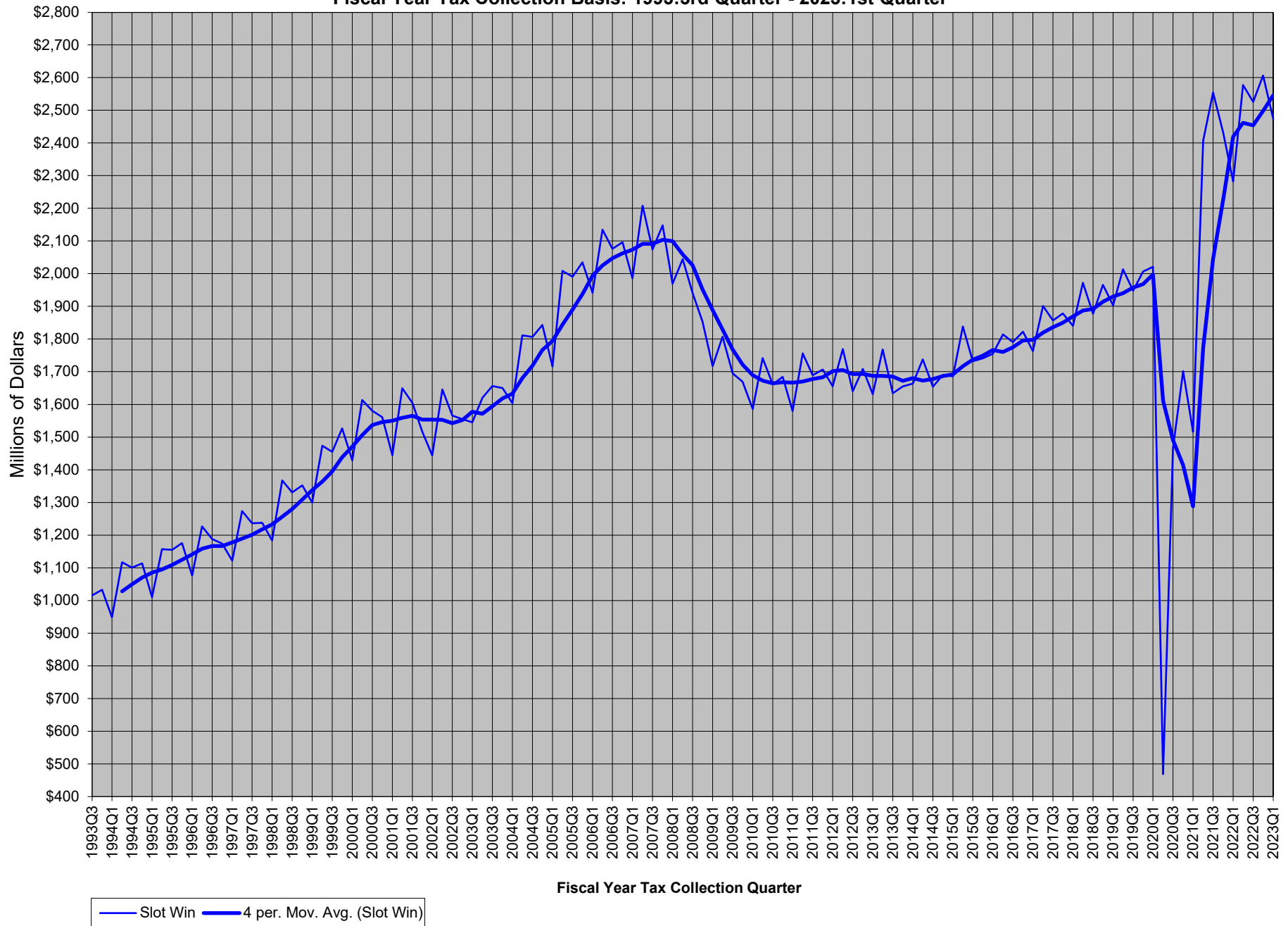


CHART 11Q
Statewide Slot Coin-In
Fiscal Year Tax Collection Basis: 1993:3rd Quarter - 2023:1st Quarter

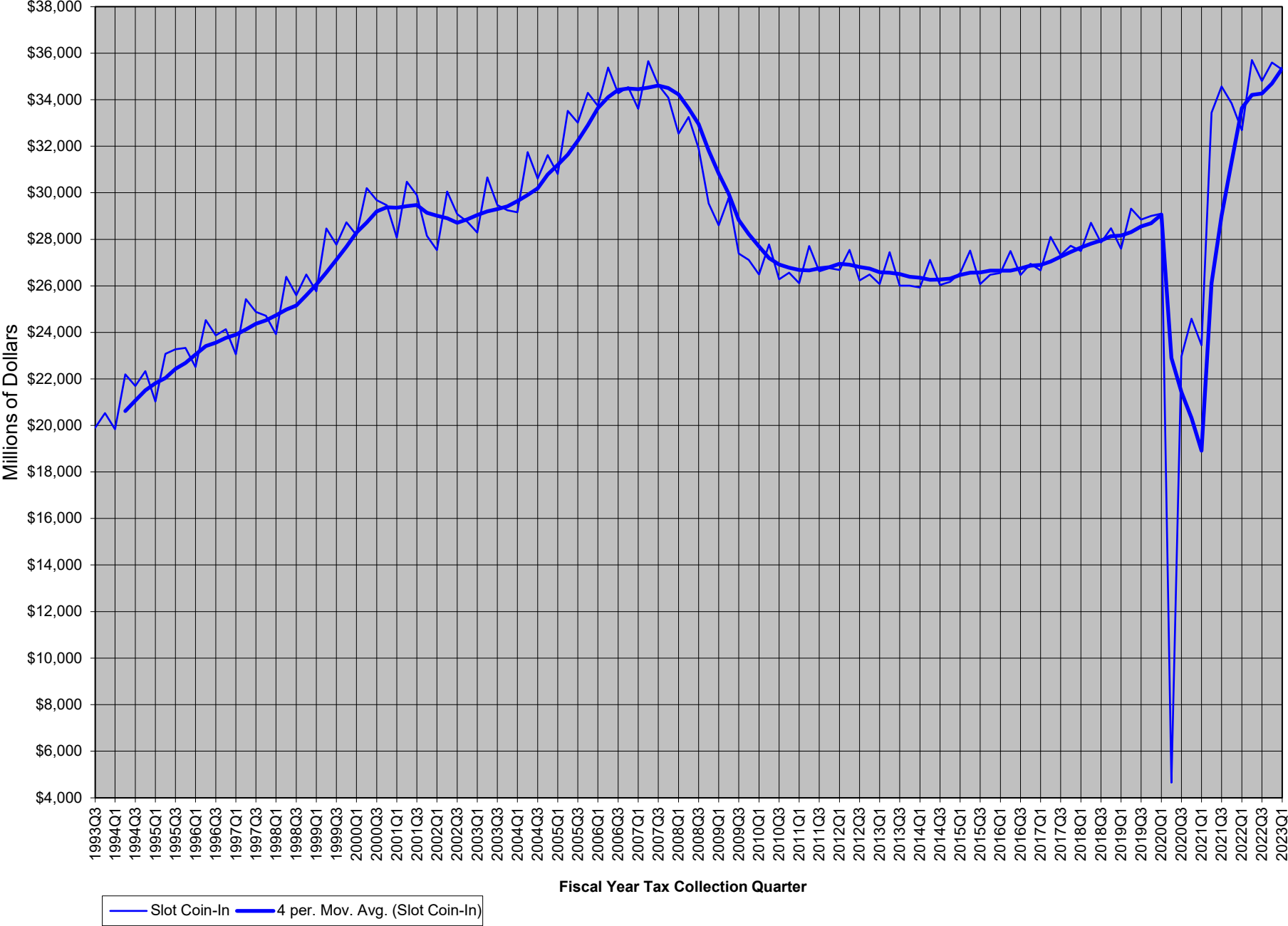


CHART 12Q
Comparison of the Growth in Statewide Slot Win and Slot Coin-In - Quarter versus Same Quarter Year Ago
Fiscal Year Tax Collection Basis: 1993:3rd Quarter - 2023:1st Quarter

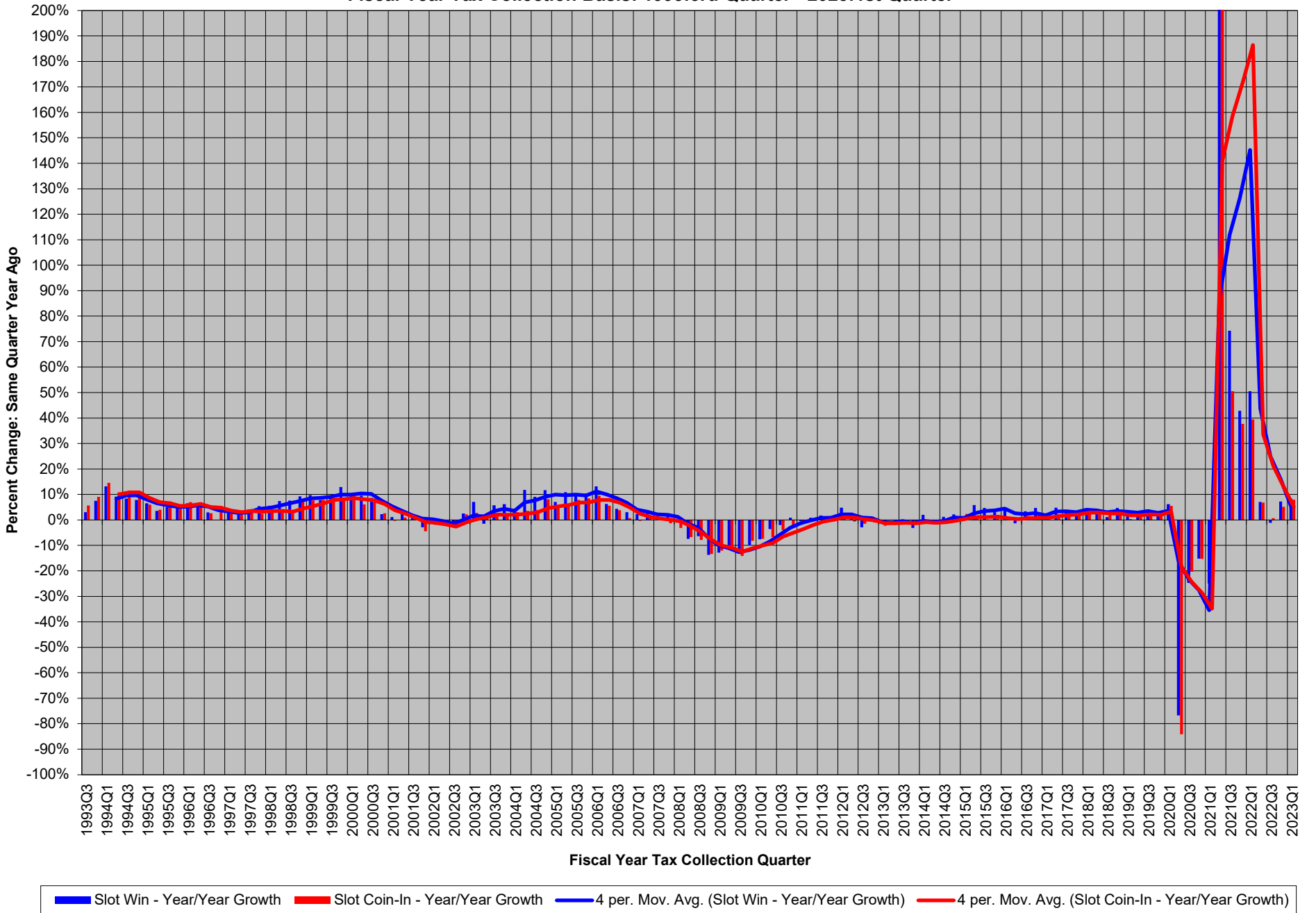


CHART 13Q
Statewide Slot Win % (Slot Win / Slot Coin-In)
Fiscal Year Tax Collection Basis: 1993:3rd Quarter - 2023:1st Quarter

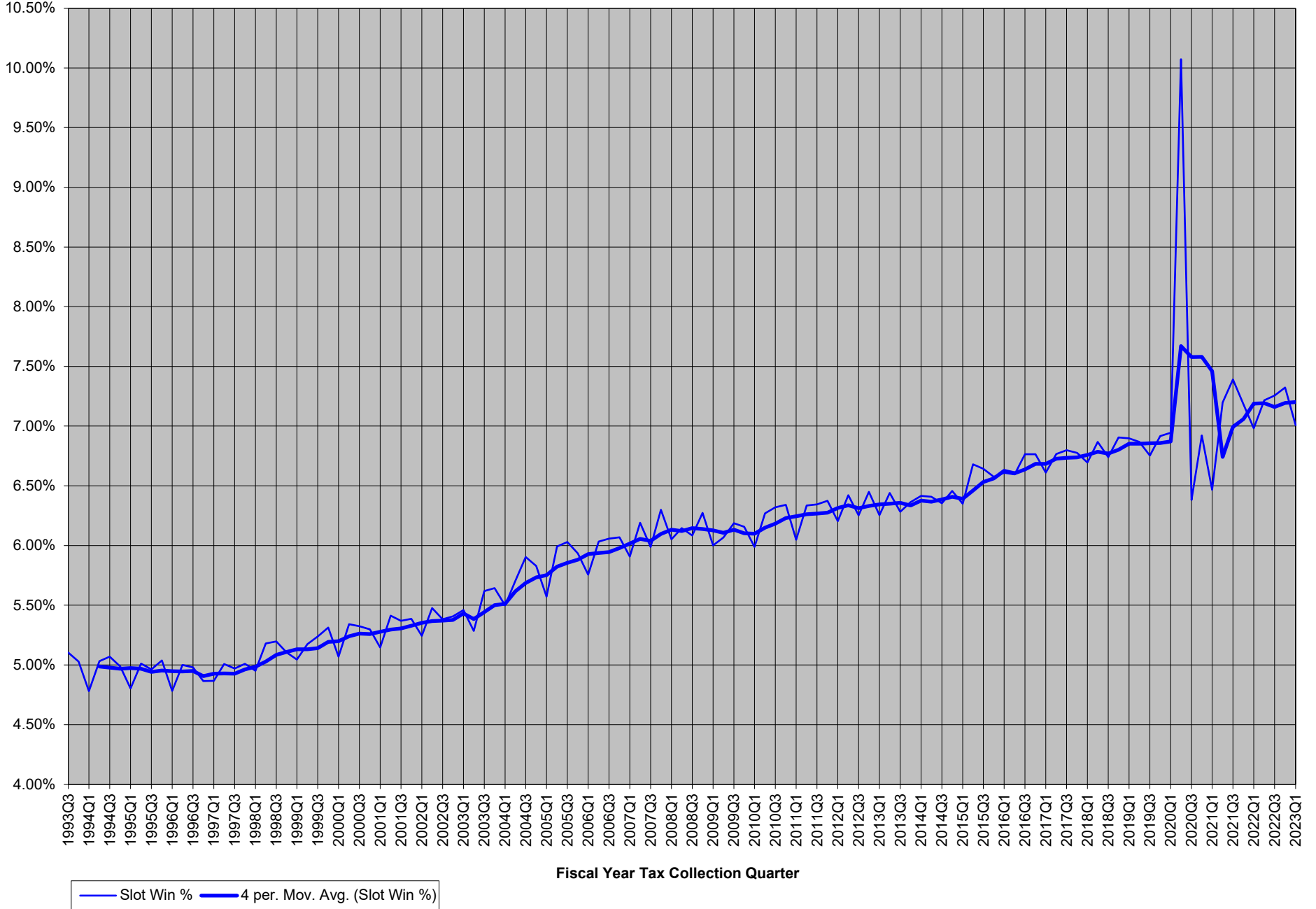


CHART 14Q
Statewide Number of Slot Machines (Non-restricted)
Fiscal Year Tax Collection Basis: 1993:3rd Quarter - 2023:1st Quarter

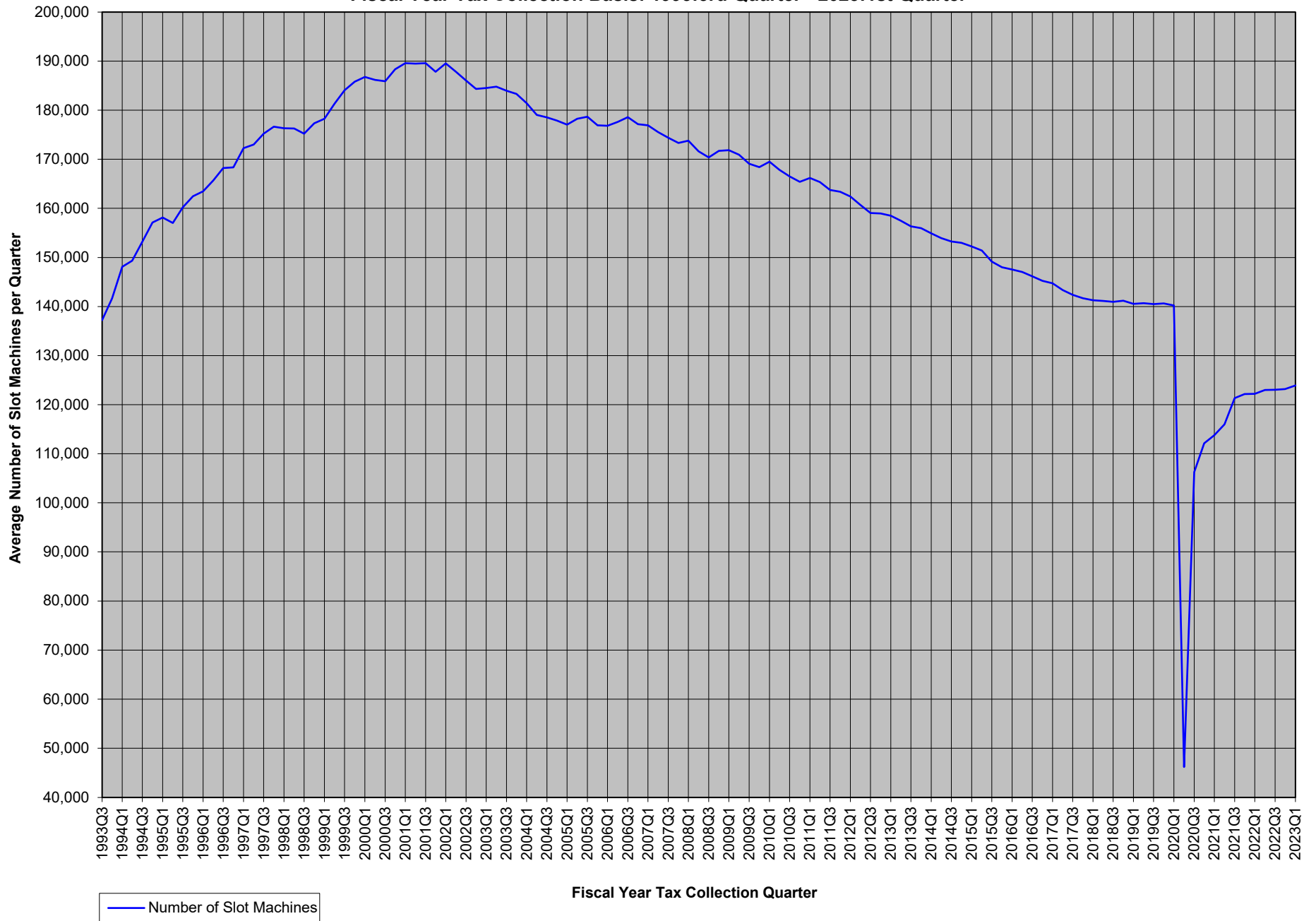


CHART 15Q
Statewide Win per Slot per Day
Fiscal Year Tax Collection Basis: 1993:3rd Quarter - 2023:1st Quarter

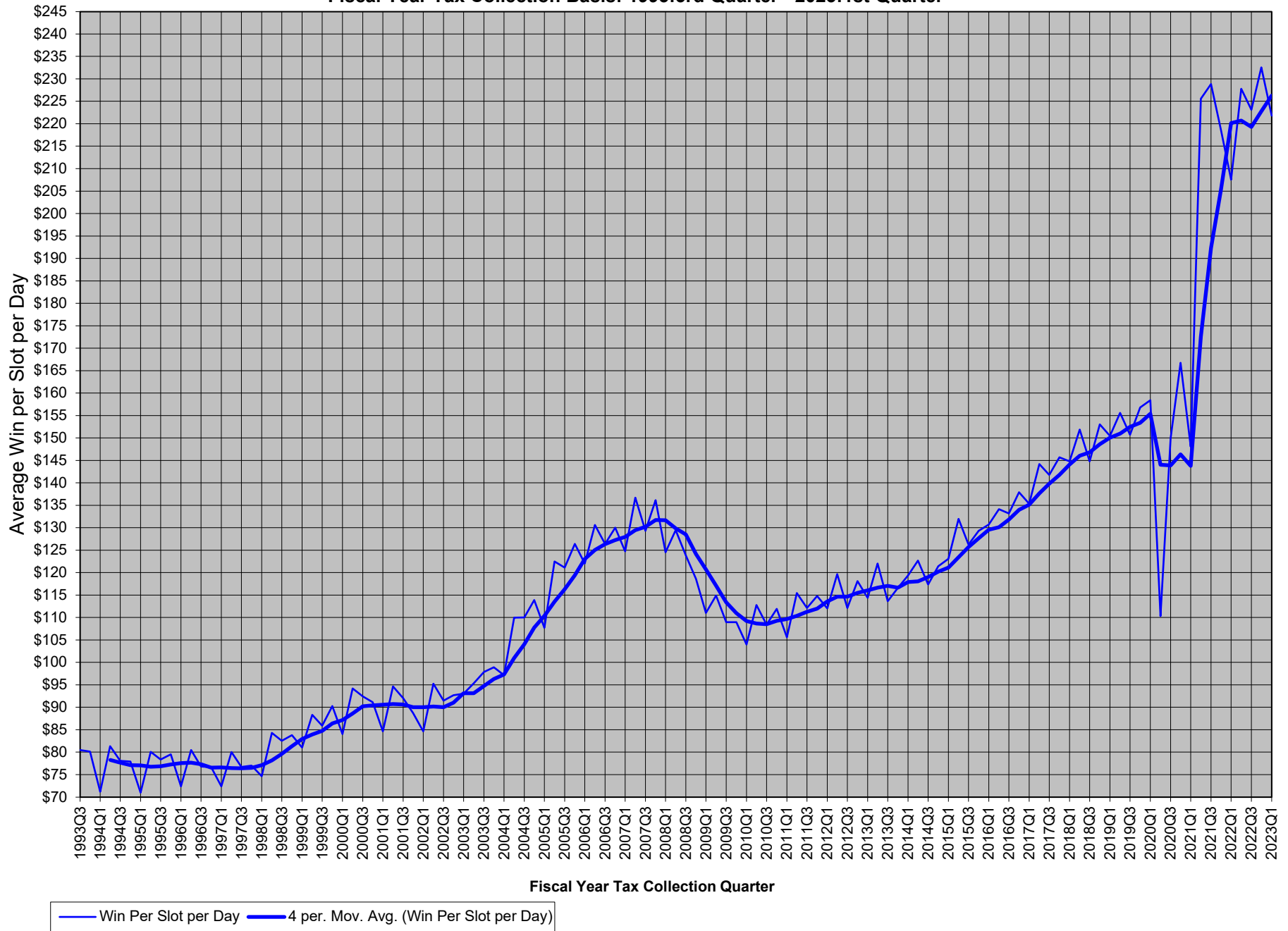


TABLE 16Q
Statewide Coin-In per Slot per Day
Fiscal Year Tax Collection Basis: 1993:3rd Quarter - 2023:1st Quarter

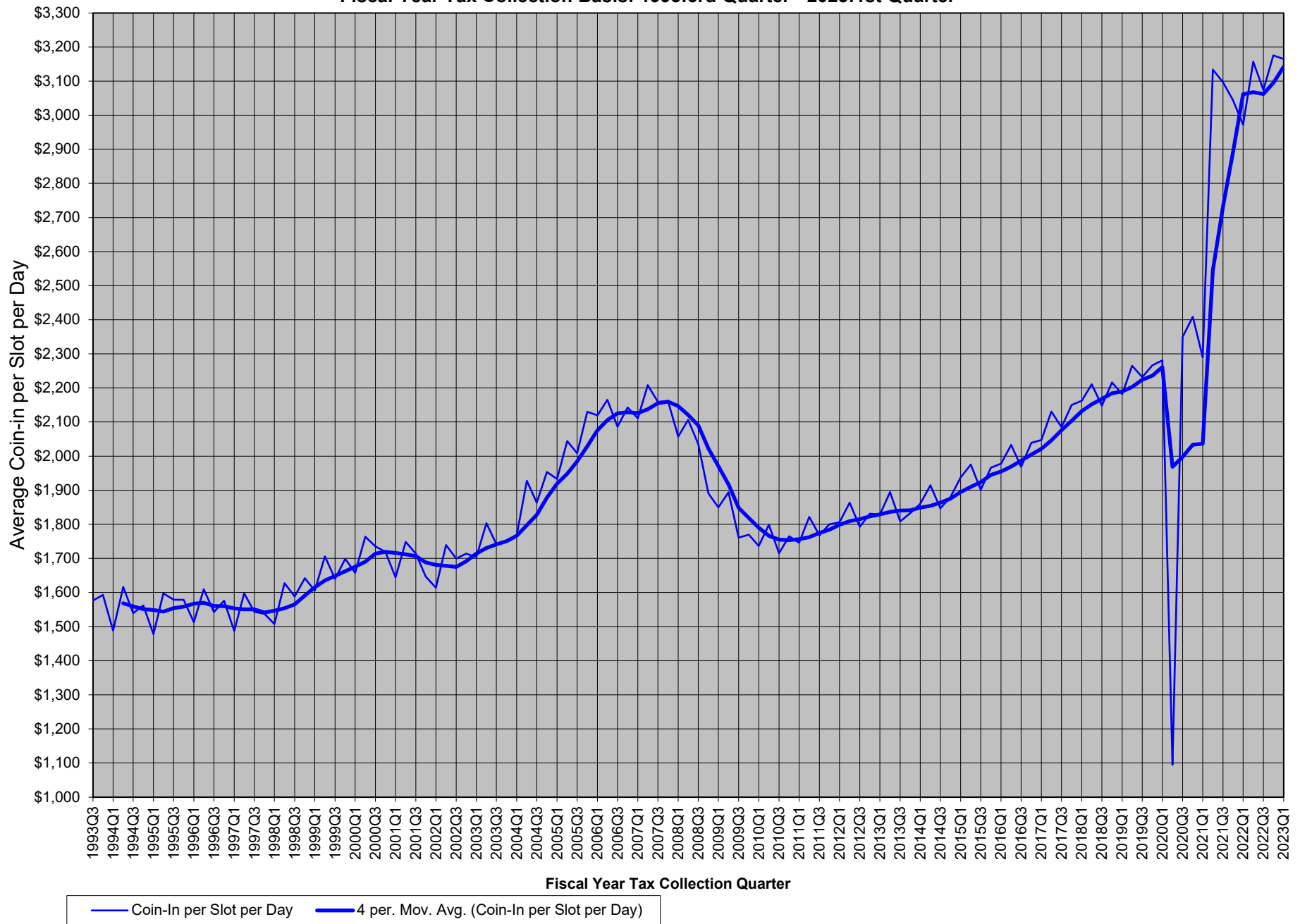


CHART 17Q
Comparison of the Growth in Statewide Win per Slot per Day and Coin-In per Slot per Day
Quarter versus Same Quarter Year Ago
Fiscal Year Tax Collection Basis: 1993:3rd Quarter - 2023:1st Quarter

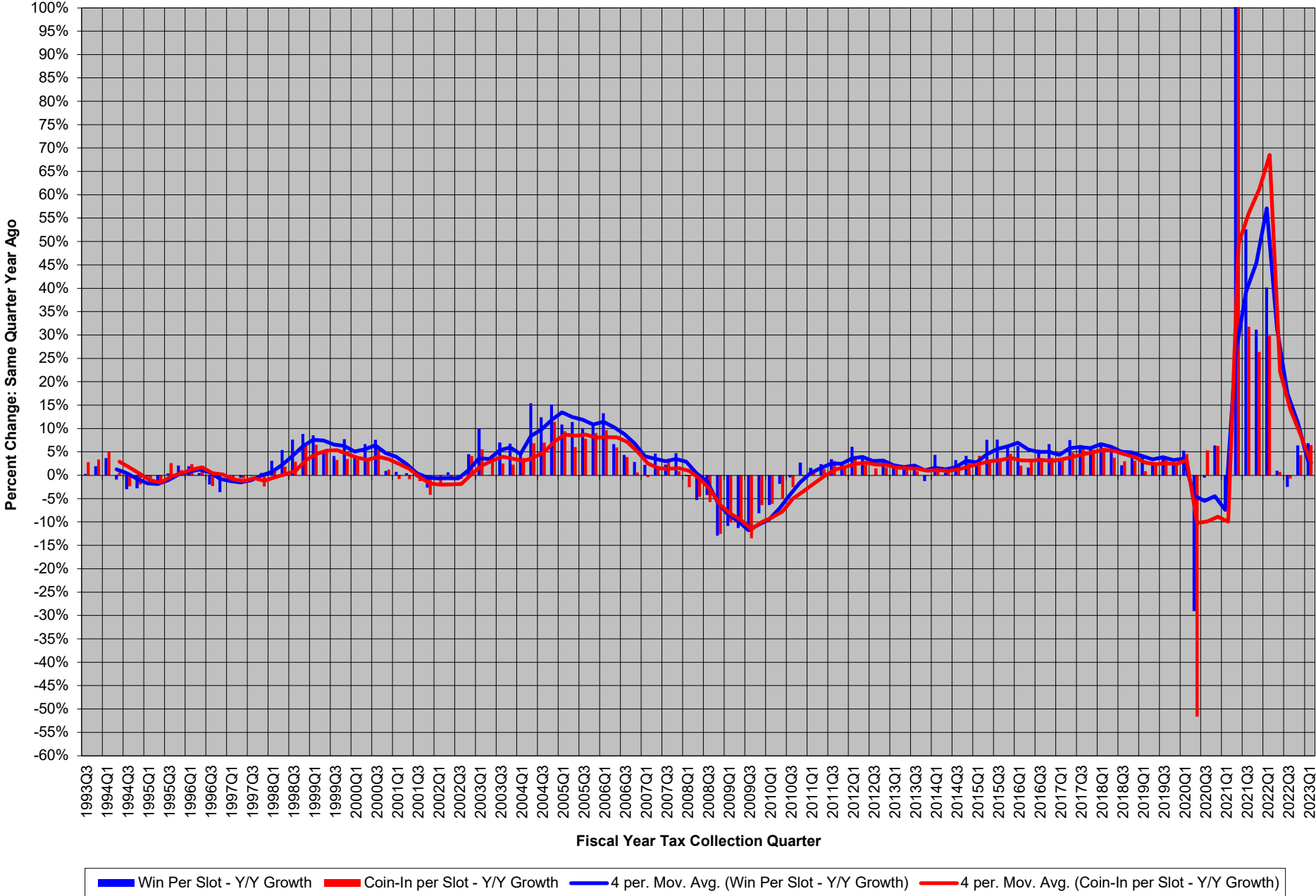


TABLE 18Q
Statewide Table Games Win
Fiscal Year Tax Collection Basis: 1993:3rd Quarter - 2023:1st Quarter

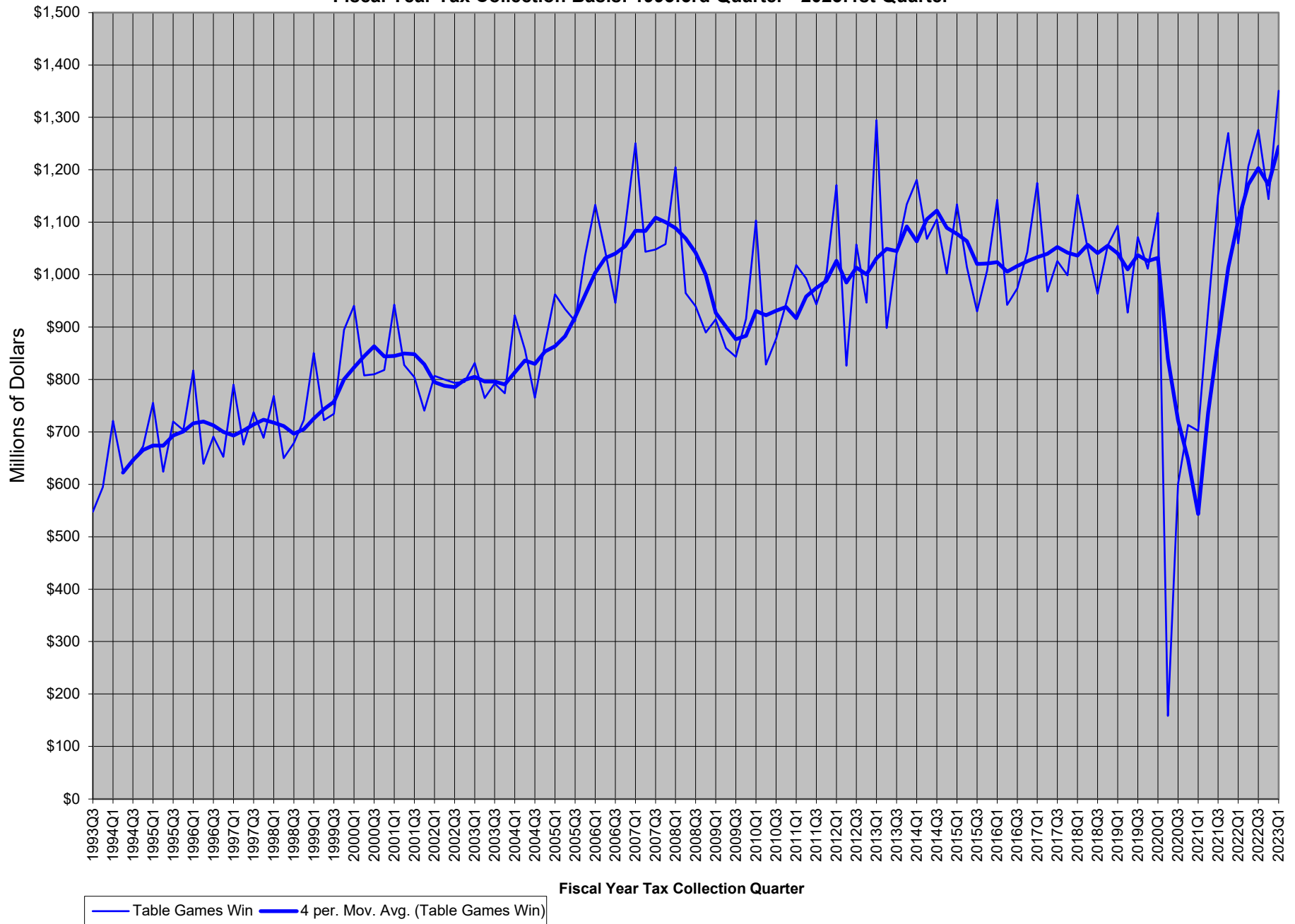


CHART 19Q
Statewide Table Games Drop
Fiscal Year Tax Collection Basis: 1993:3rd Quarter - 2023:1st Quarter

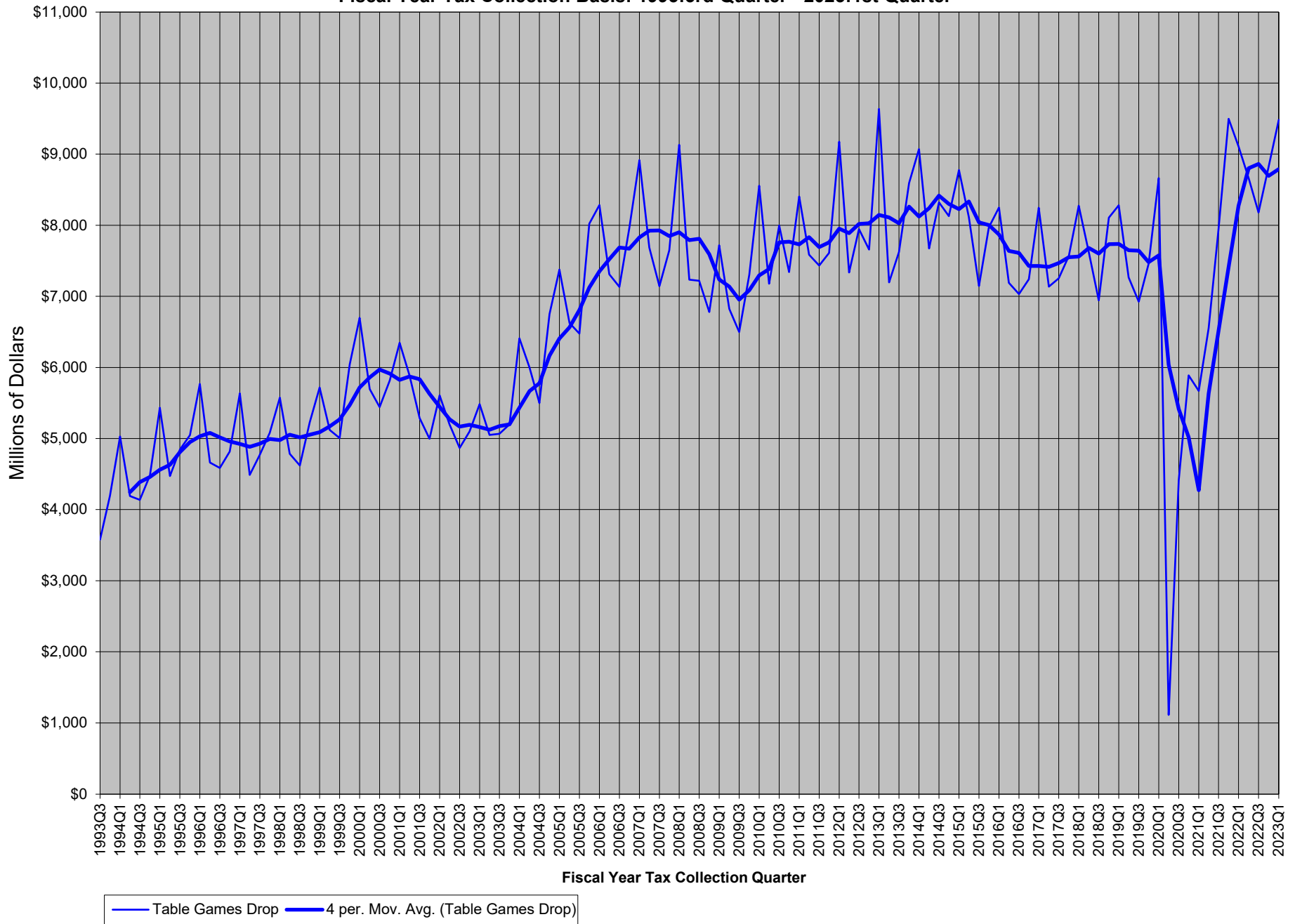


CHART 20Q
Comparison of the Growth in Statewide Table Games Win & Table Games Drop - Quarter versus Same Quarter Year Ago
Fiscal Year Tax Collection Basis: 1993:3rd Quarter - 2023:1st Quarter

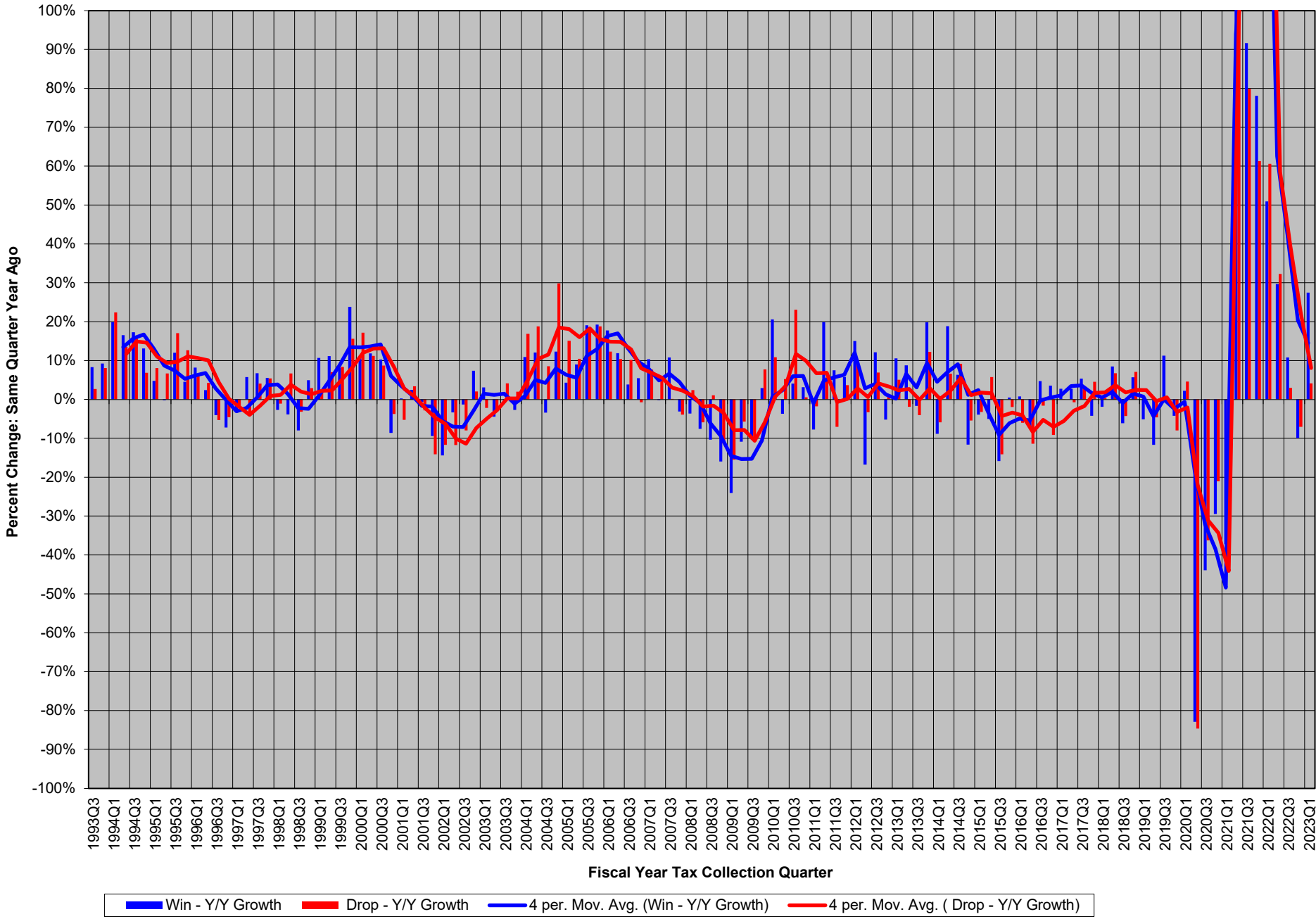


CHART 21Q
Statewide Table Games Win % (Table Games Win / Table Games Drop)
Fiscal Year Tax Collection Basis: 1993:3rd Quarter - 2023:1st Quarter

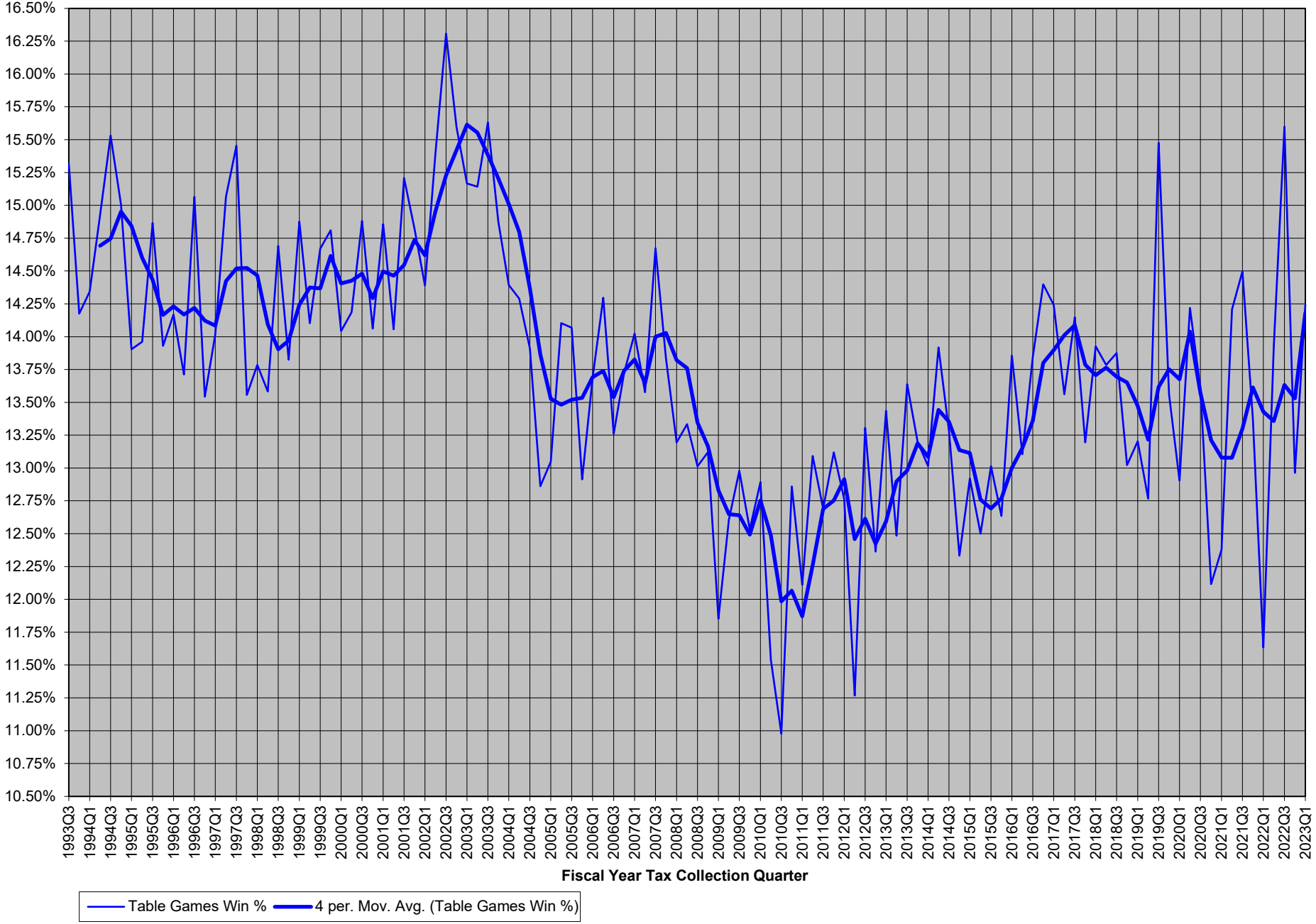


CHART 22Q
Statewide Number of Table Games
Fiscal Year Tax Collection Basis: 1993:3rd Quarter - 2023:1st Quarter

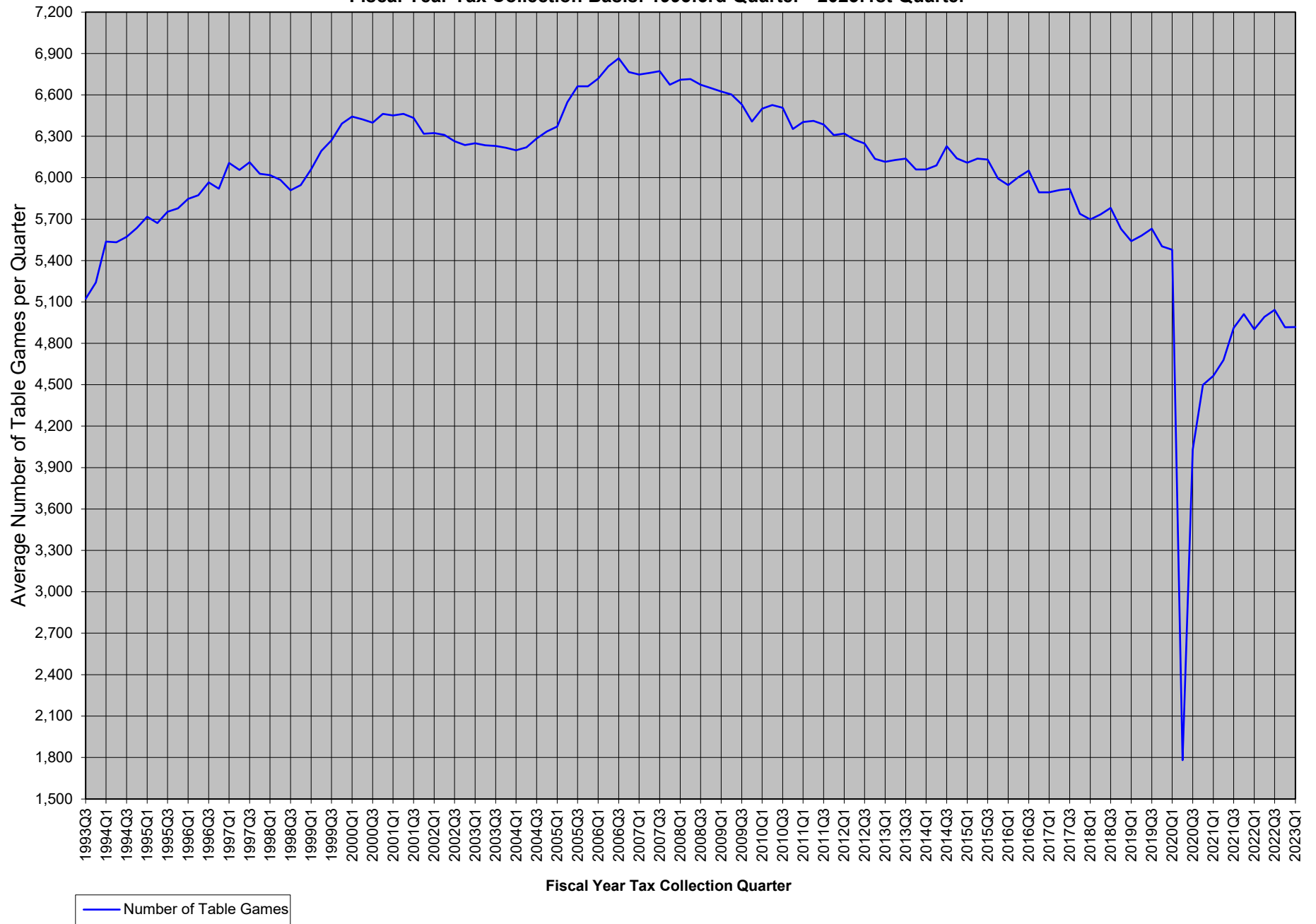


CHART 23Q
Statewide Win per Table Game per Day
Fiscal Year Tax Collection Basis: 1993:3rd Quarter - 2023:1st Quarter

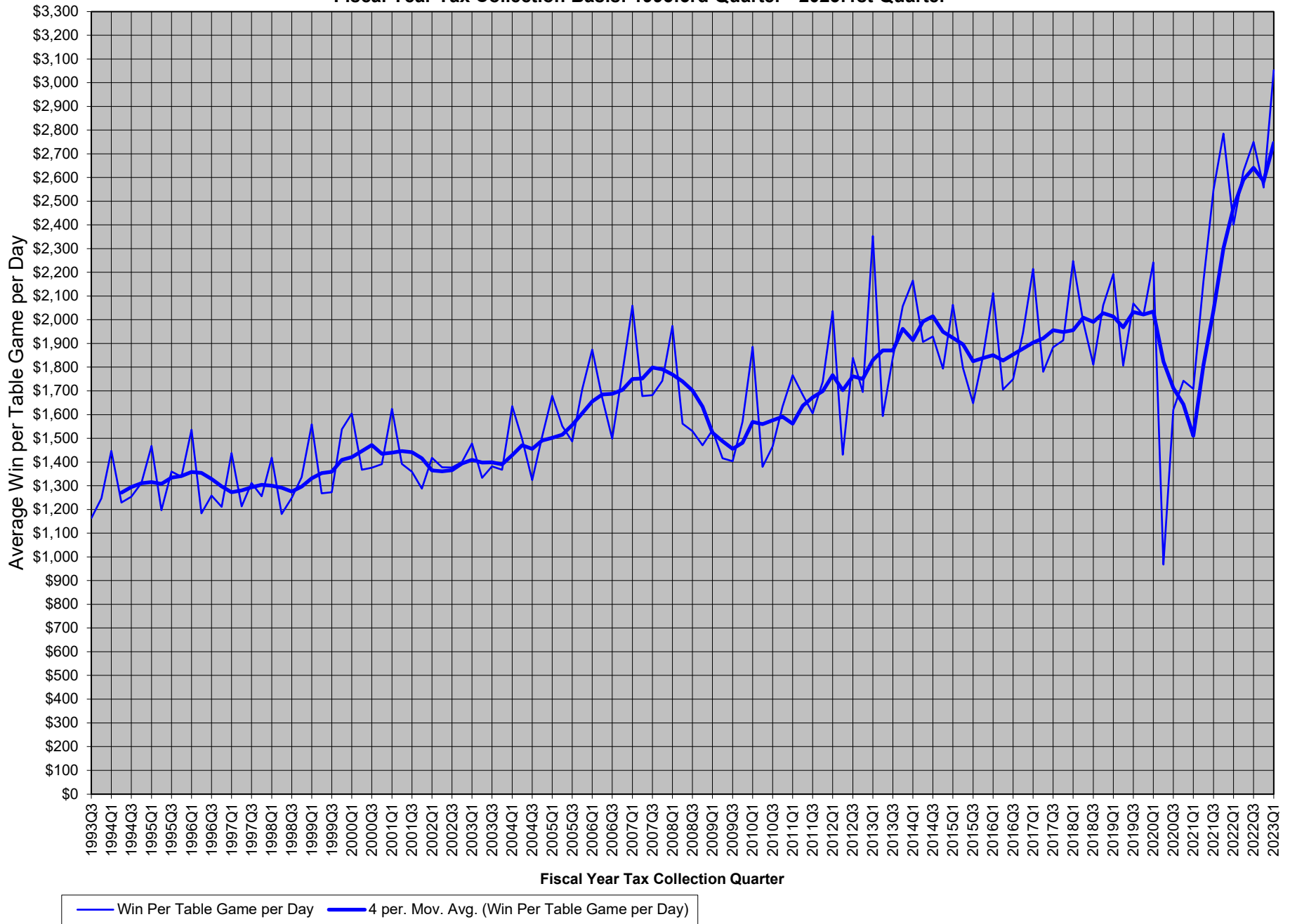


CHART 24Q
Statewide Drop per Table Game per Day
Fiscal Year Tax Collection Basis: 1993:3rd Quarter - 2023:1st Quarter

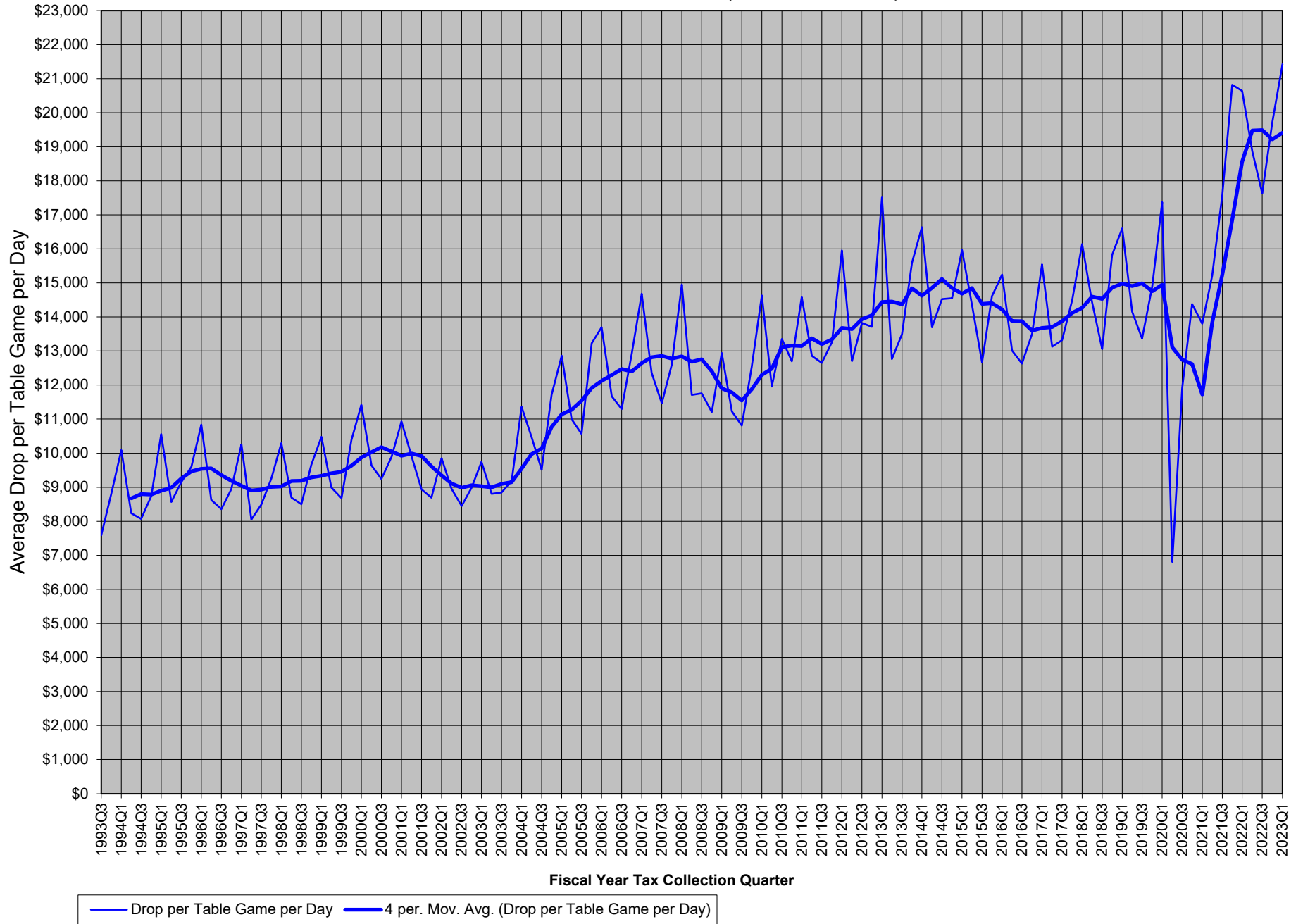


CHART 25Q
Comparison of the Growth in Statewide Win per Table Game per Day and Drop per Game per Day
- Quarter versus Same Quarter Year Ago
Fiscal Year Tax Collection Basis: 1993:3rd Quarter - 2023:1st Quarter

