

Sunset Committee

Melissa Mackdon, Executive Director NV State Public Charter
School Authority (SPCSA)

April 23, 2024

SPCSA General Context

Subtitle





Creation and Purpose

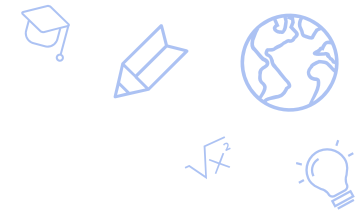
The purpose of the State Public Charter School Authority is to:

“ **Authorize charter schools of high-quality** throughout this State with the goal of expanding the opportunities for pupils in this State, including, without limitation, pupils who are at risk.

Provide oversight to the charter schools that it sponsors to ensure that those charter schools maintain high educational and operational standards, preserve autonomy and safeguard the interests of pupils and the community.

Serve as a model of the best practices in sponsoring charter schools and foster a climate in this State in which all high-quality charter schools, regardless of sponsor, can flourish. ”

NRS 388A.150



About the State Public Charter School Authority

9

Member board appointed by Governor, Senate Majority Leader, Speaker of the Assembly, State Board of Education, and Charter School Association of Nevada

36

Full time employees who conduct oversight of schools and execute Local Education Agency responsibilities (ex. monitoring, technical assistance, managing grants)

2

Offices, one located in Carson City and one located in Las Vegas

\$26.8M

Estimated pass-through of annual federal and state grants to schools for FY 2024 (excluding emergency funding)

\$66.6M

Estimated pass-through of available federal emergency funds (does not include prior Covid relief grants that have ended)



Meeting Dates

- ✓ [May 19, 2023](#)
- ✓ [June 23, 2023](#)
- ✓ [July 28, 2023](#)
- ✓ [August 25, 2023](#)
- ✓ [September 11, 2023](#)
- ✓ [October 3, 2023](#)
- ✓ [October 13, 2023](#)
- ✓ [November 3, 2023](#)
- ✓ [December 8, 2023](#)
- ✓ [January 26, 2024](#)
- ✓ [March 1, 2024](#)
- ✓ [April 12, 2024](#)

The link to all public meeting materials is located [here](#).

Key Board Decisions



- ✓ Approved various charter school amendment application in accordance with NRS 388A.276
- ✓ Approved Academic, Financial, and Organization Performance Frameworks in accordance with NRS 388A.229. Issued notices of concern when appropriate.
- ✓ Approved Transportation Plans/Funding pursuant to AB 400 (2023 Session)
- ✓ Recommended three names to the Governor for consideration for new ED of the agency per NRS 388A.190
- ✓ Renewed Charter School Contracts for three schools in accordance with NRS 388A.285
- ✓ Approved four new charter school to open in the 2024-2025 school year in accordance with NRS 388A.246-255
- ✓ Closed a charter school in accordance with NRS 388A.306
- ✓ Reviewed annual site evaluation conducted in accordance with NRS 388A.223
- ✓ Monitored progress toward strategic plan goals
- ✓ Reviewed and approved the following reports:
 - ✓ Annual Report to NDE pursuant to NRS 388A.351
 - ✓ Annual Growth Management Plan pursuant to NRS 388A.167
 - ✓ Annual Needs Assessment pursuant to NRS 388A.249



Regulation Workshop April 12, 2024

- | | |
|----------------|----------------|
| ✓ NAC 388A.250 | ✓ NAC 388A.405 |
| ✓ NAC 388A.255 | ✓ NAC 388A.410 |
| ✓ NAC 388A.260 | ✓ NAC 388A.415 |
| ✓ NAC 388A.265 | ✓ NAC 388A.420 |
| ✓ NAC 388A.400 | |

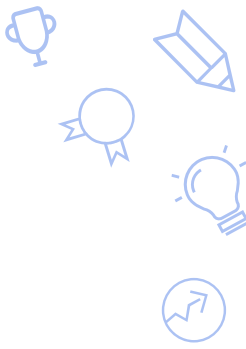
Statutory Changes

SPCSA staff met with Governor Lombardo's policy team on April 2 to establish potential BDR, statutory changes, and the priorities of both agencies in regard to charter schools in the upcoming 2025 session.

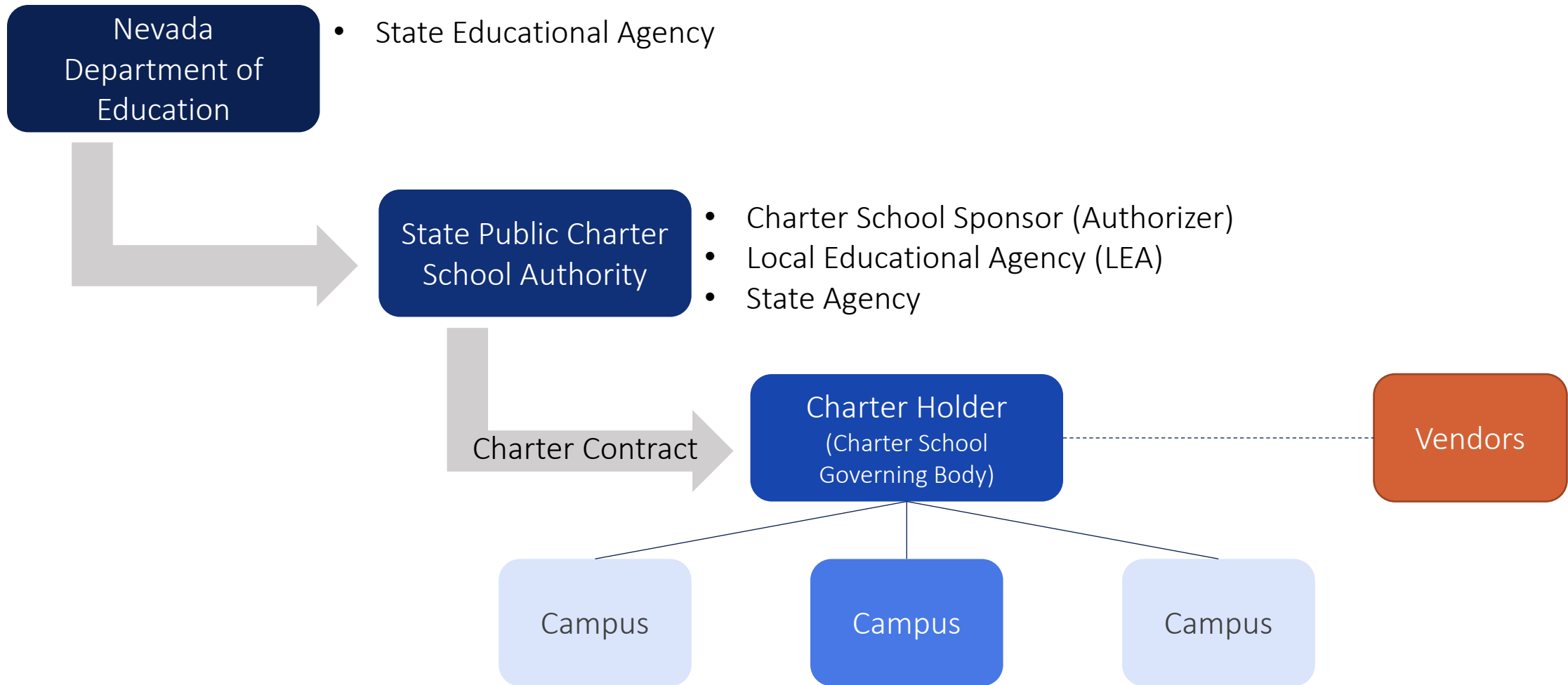
Improved Efficiency

Charter schools continue to grow in Nevada, Clark County Charter Schools will be transferring sponsorship to the SPCSA adding an additional 6000 students to our portfolio, and new entities are applying to become authorizers, looking at the SPCSA to model best practice. As such, additional staffing is required to effectively serve our schools and the students in them.



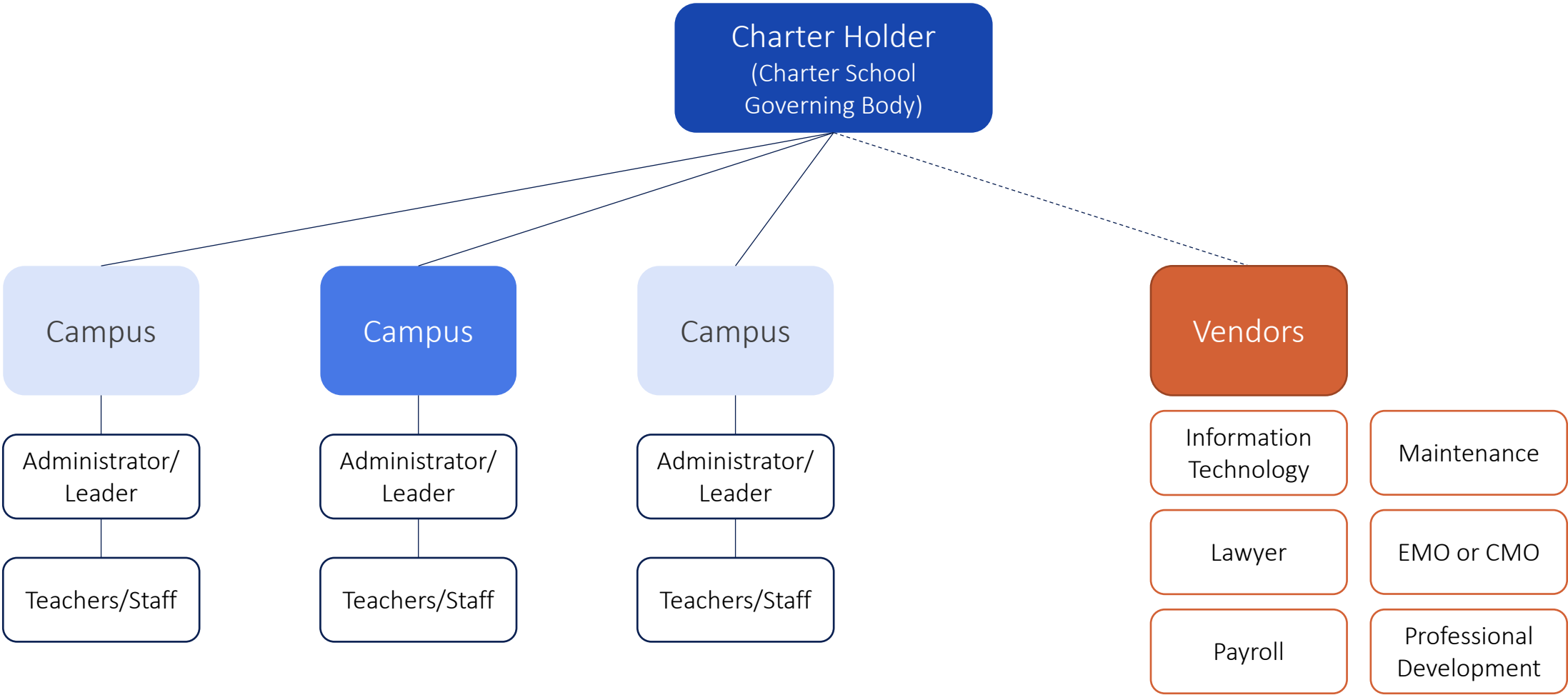


The SPCSA in Context





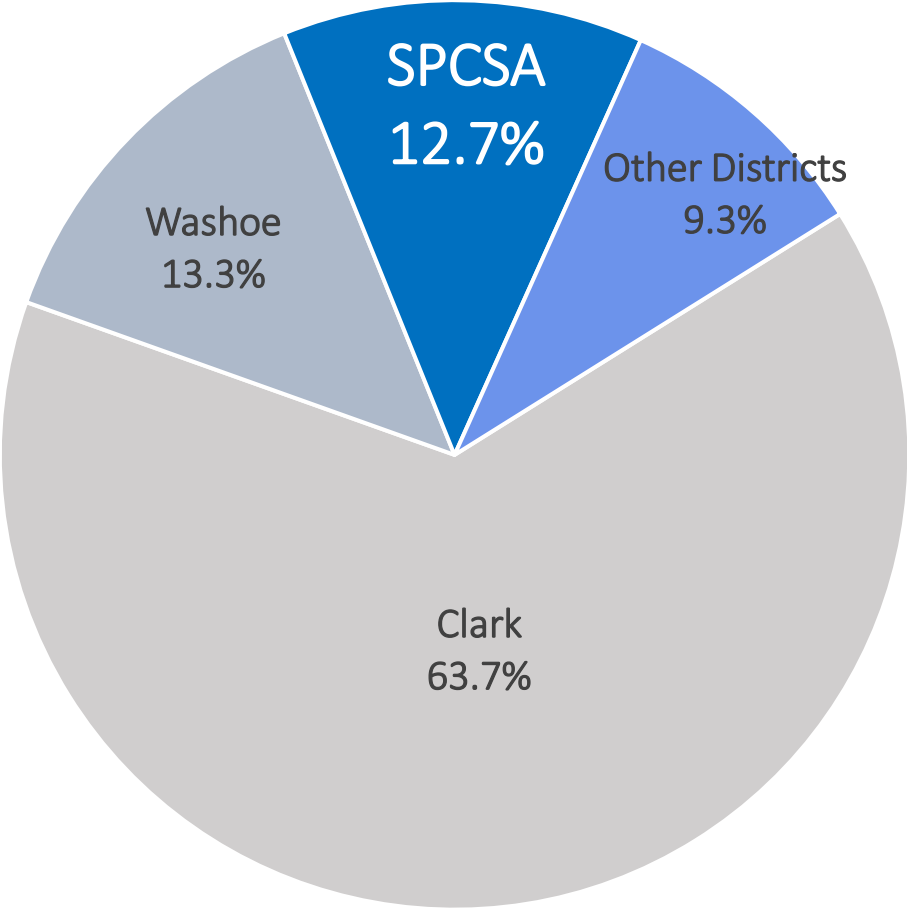
Charter School Structure



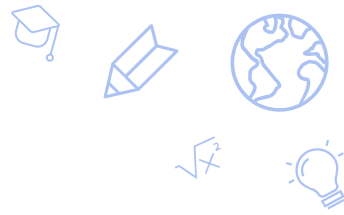


Overview of Schools and Students Served

There are 81 charter school campuses sponsored by the SPCSA located across five counties: Churchill, Clark, Elko, Washoe, and White Pine. Of the school campuses sponsored by the SPCSA, about 85% are located in Clark County.



Entity	# Enrolled	% of State
STATE	485570	-
Clark	309397	63.7%
Washoe	64755	13.3%
SPCSA	61883	12.7%
Elko	9908	2.0%
Lyon	9085	1.8%
Carson City	7522	1.5%
Nye	5682	1.1%
Douglas	5036	1.0%
Humboldt	3356	0.6%
Churchill	3336	0.6%
White Pine	1290	0.2%
Lander	1077	0.2%
Lincoln	959	0.1%
Pershing	657	0.1%
Mineral	596	0.1%
Storey	400	<0.1%
Eureka	325	<0.1%
University	171	<0.1%
Esmeralda	89	<0.1%
Correctional	46	<0.1%



SPCSA-Sponsored Schools

By offering a variety of school models, the SPCSA enables Nevada families to choose schools that best align with the needs and interests of their children.

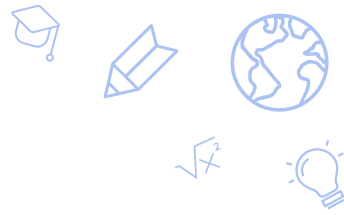
- Arts Integration
- Montessori
- Bi-lingual education
- Career and Technical Education
- Alternative High School Serving Under-Credited Students
- Schools aimed to meet the needs of young women
- Dual Enrollment High Schools
- Online or Blended Learning
- Classical Education
- STEM/STEAM
- Project-based learning



Strategic Plan

2019 through 2024





Vision

Equitable access to diverse, innovative, and high-quality public schools for every Nevada student.

Mission

The SPCSA sponsors, supports, and oversees dynamic and responsive public charter schools that prepare all students for academic, social, and economic success.





Five-Year Goals

- ✓ Provide families with access to high quality schools
- ✓ Ensure that every SPCSA student succeeds – including those from historically underserved student groups
- ✓ Increase the diversity of students served by SPCSA schools

Strategies



Proactive Oversight



Strategic Growth



Expanded Support



Recognize Progress





The SPCSA aims for all sponsored schools to meet academic, organizational and financial performance standards.

The SPCSA aims for all sponsored schools to meet academic, organizational and financial performance standards.





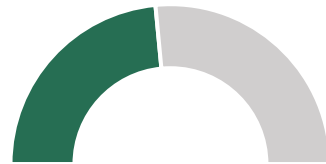
Despite the impact of COVID-19, SPCSA-sponsored schools have continued to make academic gains



Nevada School Star Ratings (2022-23 School Year)



73%
of SPCSA schools earning
a 3-Star or better on the
NSPF (down 7%)



47%
of SPCSA are rated as 4- or
5-star schools (down 8%)

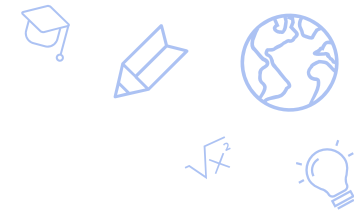
Graduation Rates (Class of 2023)



83.8%
4-year graduation rate
(down 2.2 %)

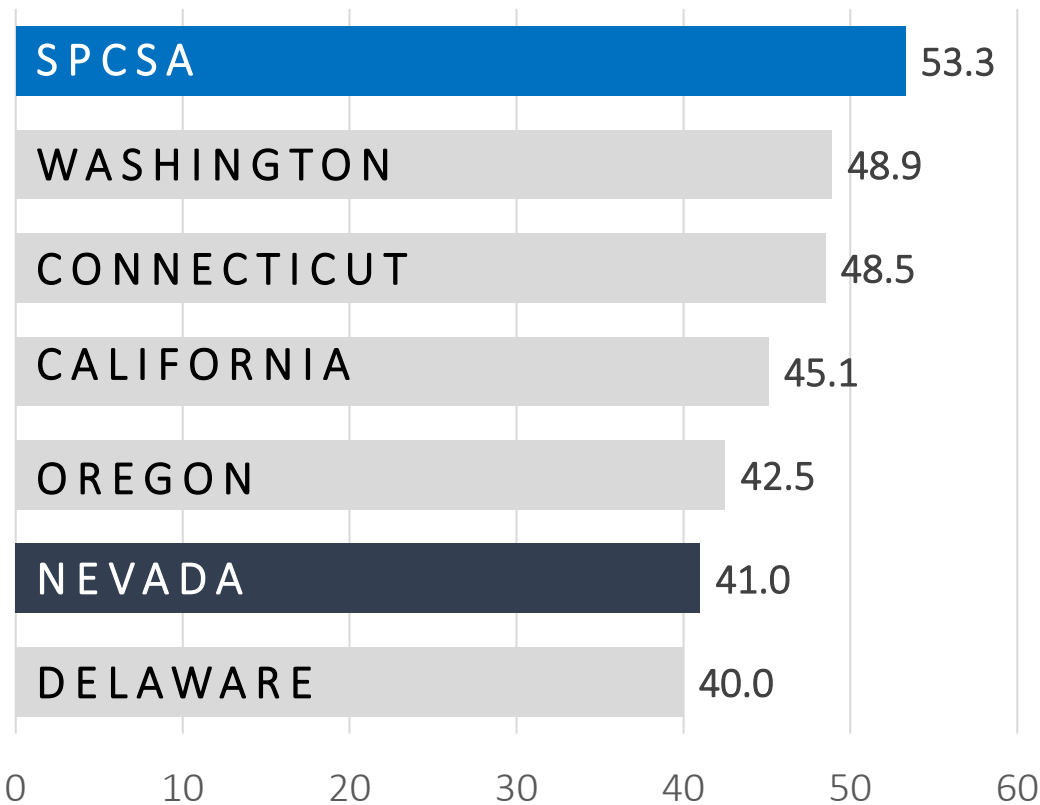
25 of 26 high schools
exceeded the statewide graduation rate





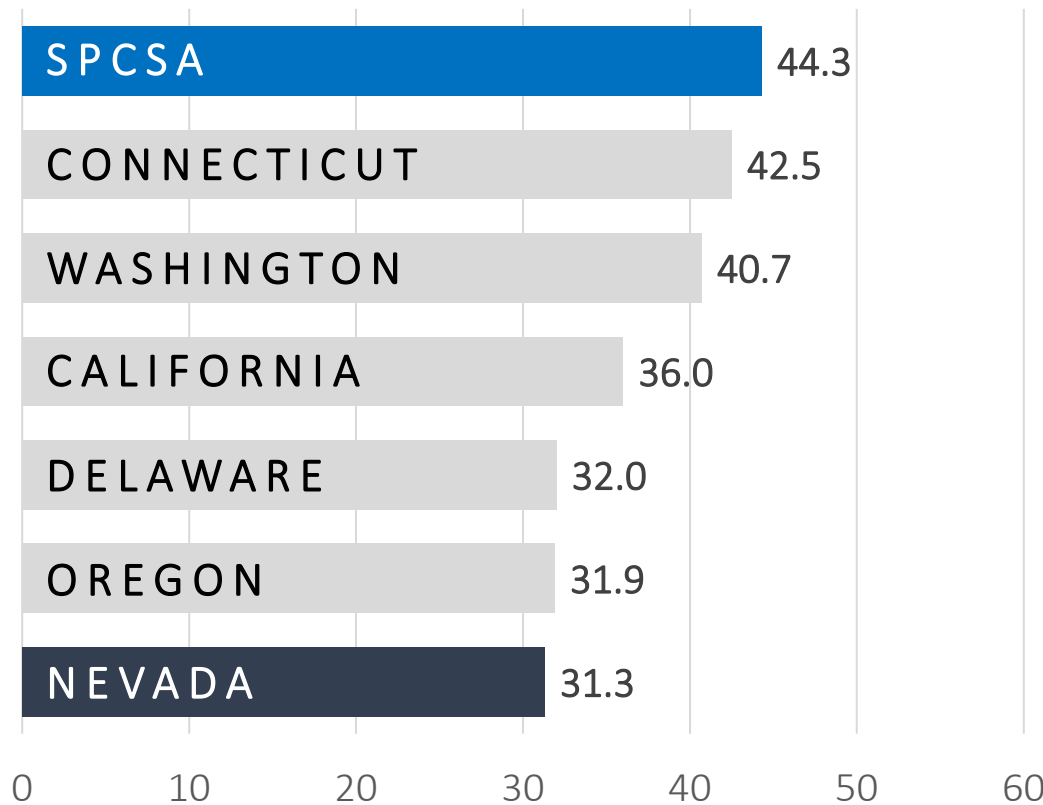
SPCSA vs. Nation: Smarter Balanced Proficiency

ELA Proficiency



Note SPCSA high of 60.0% in 2018-19.

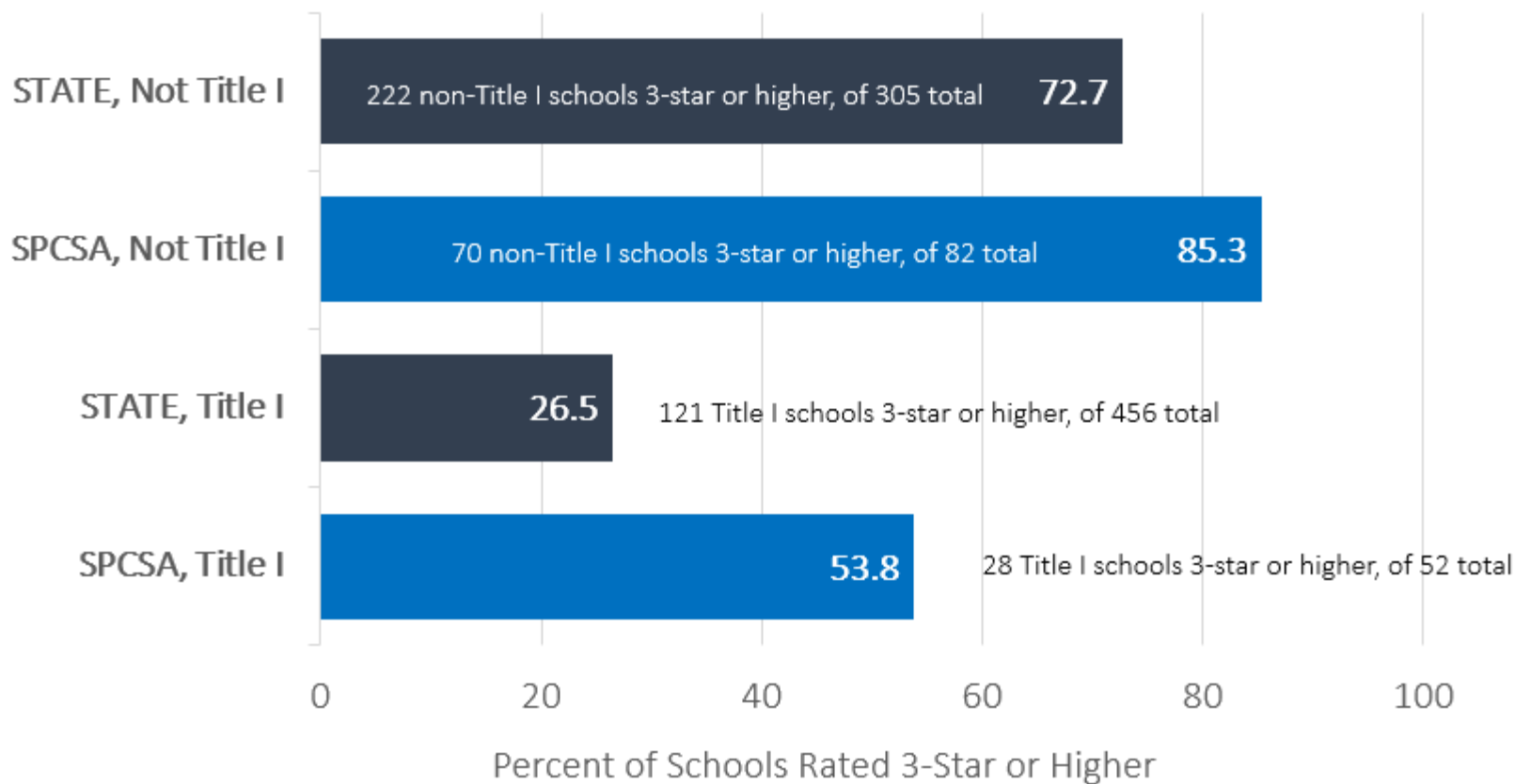
Math Proficiency



Note SPCSA high of 48.4% in 2018-19.



SPCSA-Sponsored Schools Outperform the State, but Title I schools are Less Likely to Earn 3 Stars or Better

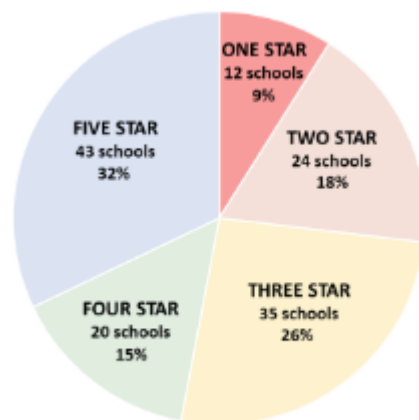




Academic Performance Framework

- The SPCSA adopted a new Academic Performance Framework (APF) in 2019 that is based on:
 - School Index Score (NSPF);
 - Performance comparisons (NSPF index score) to the local school district and nearby school; and
 - Enrollment diversity compared to the local school district.

2022-23 SPCSA Academic Performance Framework Ratings



Site Evaluations

- The SPCSA conducts site evaluations at each school campus, at minimum, in the first, third and fifth years of the charter contract.
- Each site evaluation involves document submissions, classroom observations, and focus groups.
- For the 2023-24 school year, the SPCSA has 36 site evaluations scheduled, with 14 complete as of January 1, 2024.

The data shown above exclude schools that did not receive a rating. The requirements to receive an SPCSA Academic Performance Framework score and rating are found [here](#).



Organizational Performance Framework

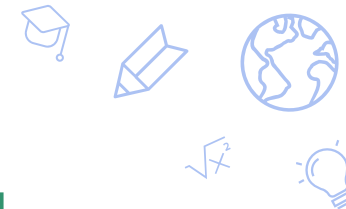
- The SPCSA approved a new Organizational Performance Framework (OPF) in 2019 with five major categories:
 - Education Program
 - Financial Management and Oversight
 - Governance and Reporting
 - Students and Employees
 - School Environment
- The Organizational Framework takes into account over 40 annual compliance requirements and is focused on answering the question: *Is the organization effective and well run?*
- For the 2022-2023 school year, 95% of charter holders met standards on the Organizational Performance Framework.

Financial Performance Framework

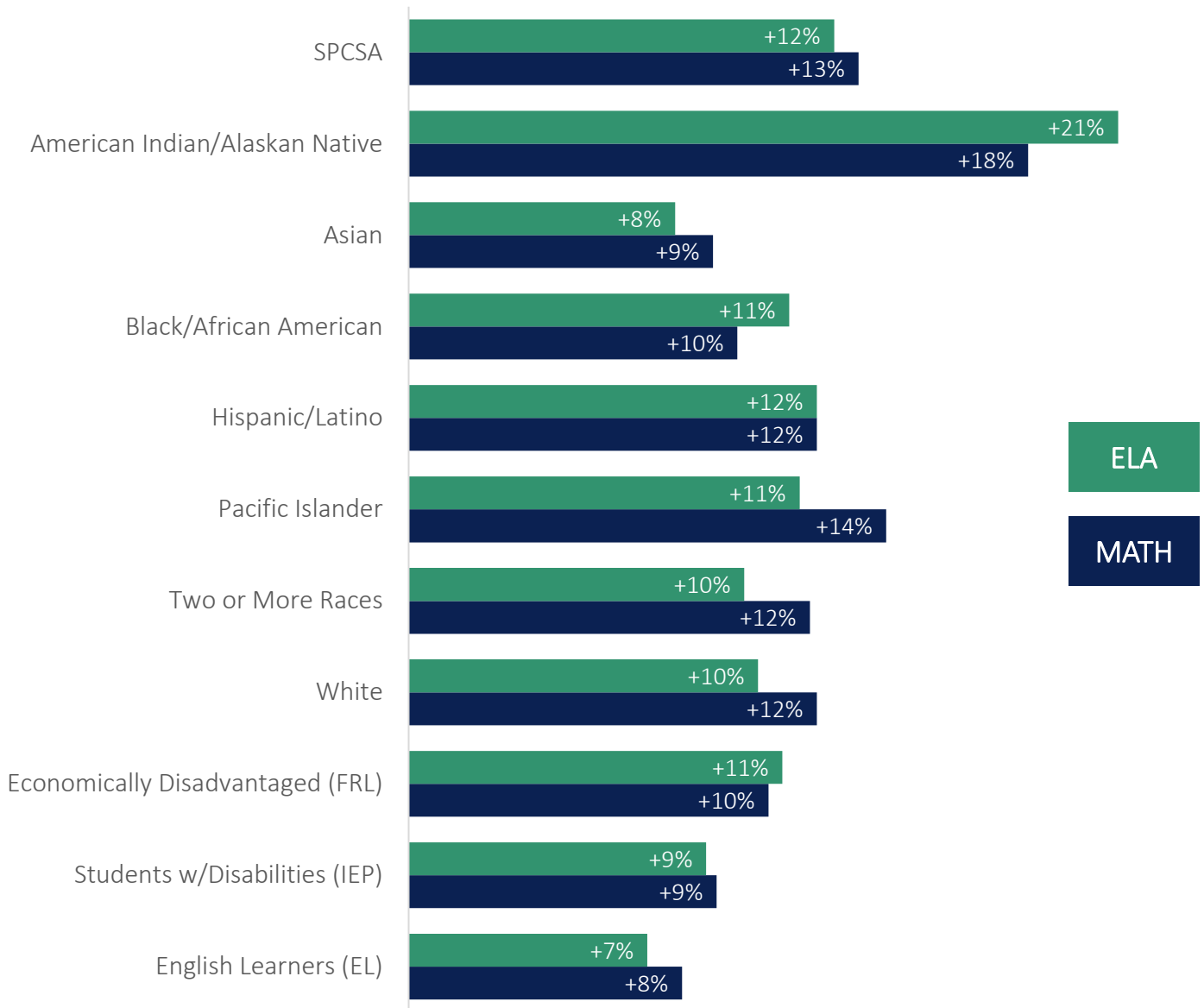
- The SPCSA approved a new Financial Performance Framework (FPF) in 2019 with four near-term measures and four sustainability measures.
- The Financial Framework is focused on answering the question: *Is the school financially viable?*
- For the 2021-2022 school year, 78% of charter holders met standards on the Financial Performance Framework. Ratings for the 2022-23 school year will be presented at a future board meeting.

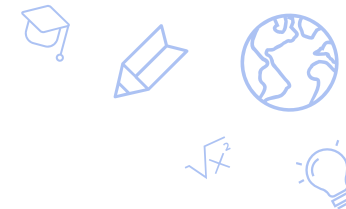
Ensure that every SPCSA student succeeds – including those from historically underserved student groups

The SPCSA aims for all sponsored schools to demonstrate strong academic growth, high levels of proficiency, and on-time graduation across all student groups, including historically underserved student groups.

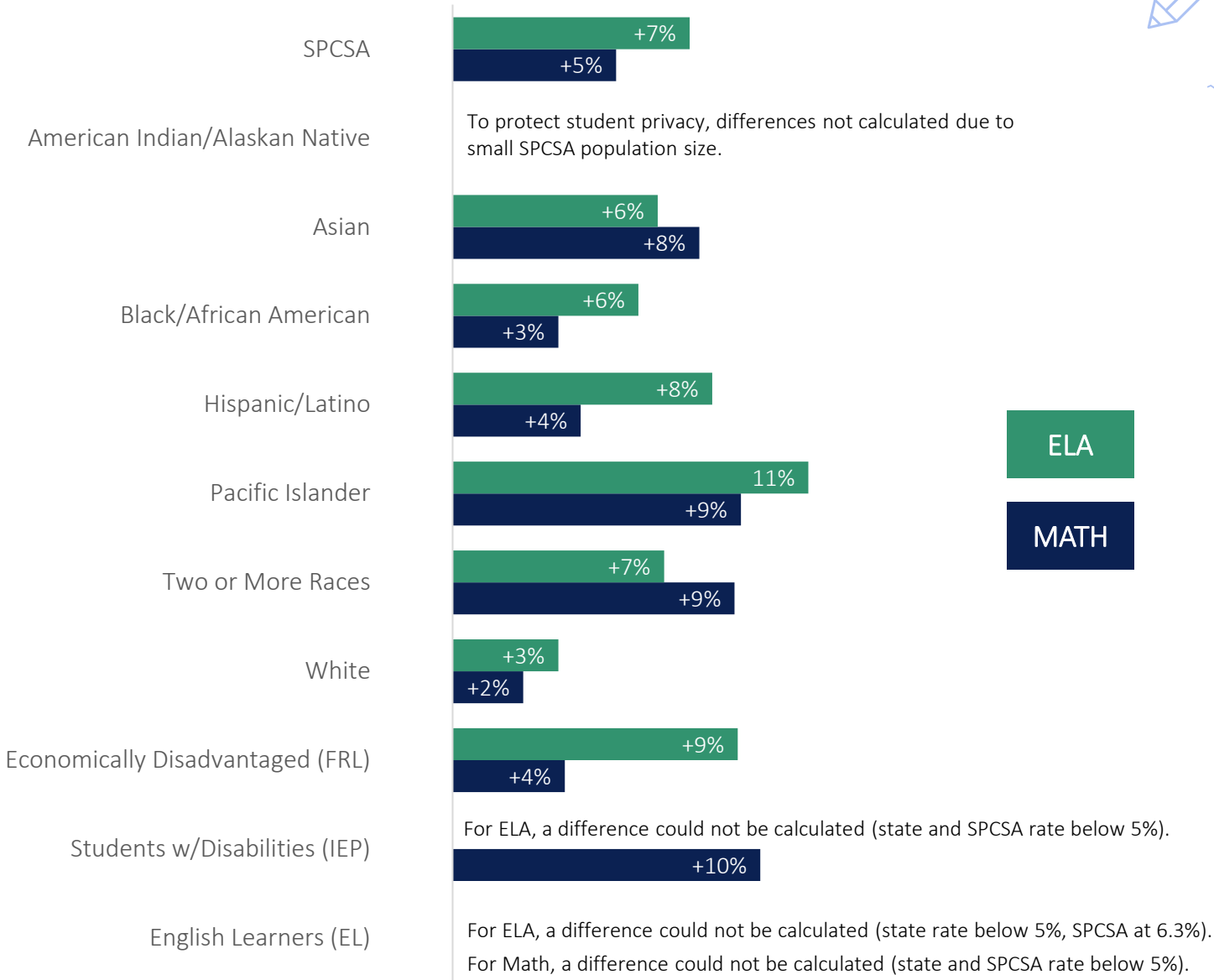


All SPCSA Student Groups Outperformed their State Peers in 3rd-8th Grade Math and ELA



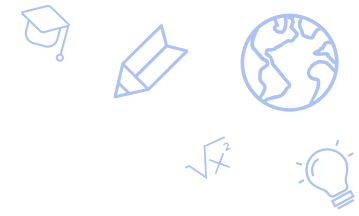
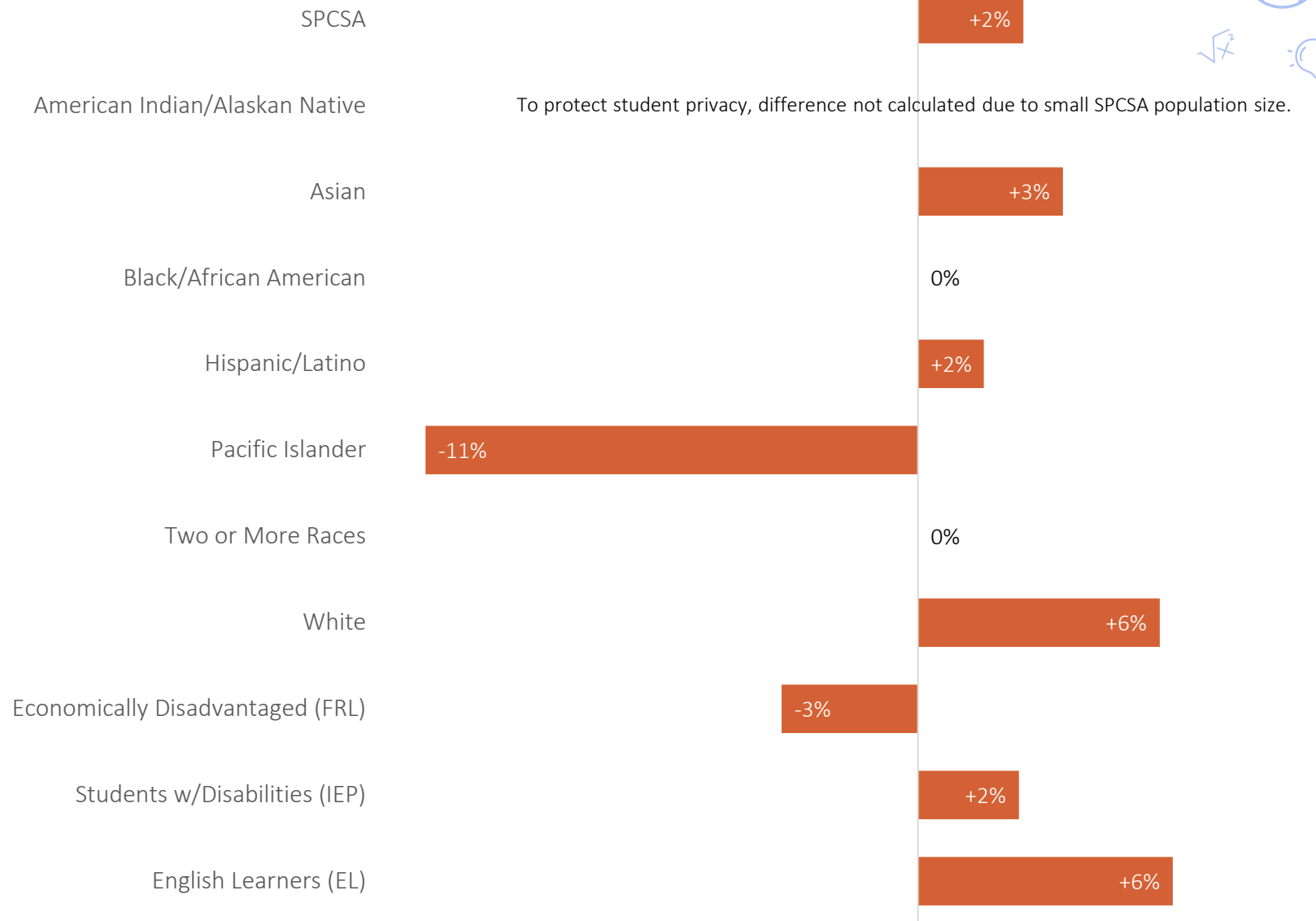


Most SPCSA Student Groups Outperformed their State Peers in 11th Grade Math and ELA





Most SPCSA student groups had graduation rates that **exceeded the respective statewide student group**





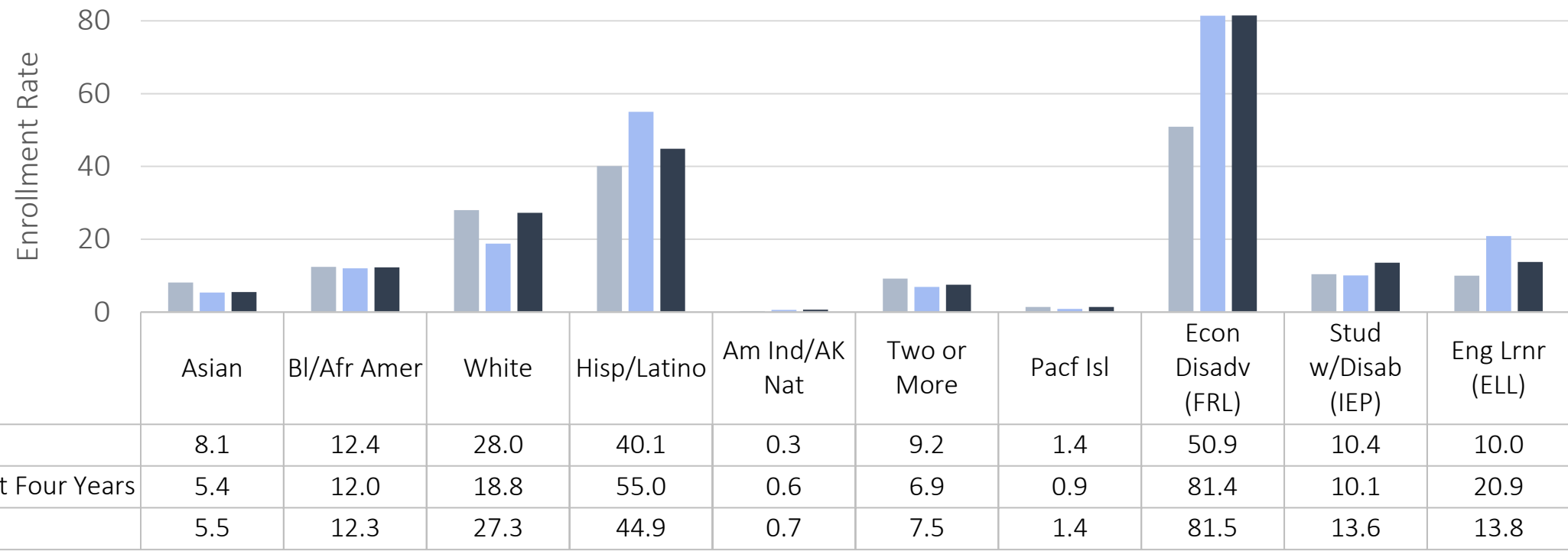
The SPCSA aims for sponsored schools to serve a population of students that is representative of the State with regard to race/ethnicity and additional student groups.

The SPCSA aims for sponsored schools to serve a population of students that is representative of the S with regard to race/ethnicity and additional student groups.



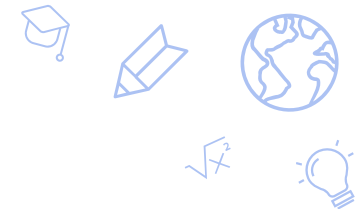


New SPCSA Schools that Opened in Recent Years are More Reflective of State Enrollment Rates

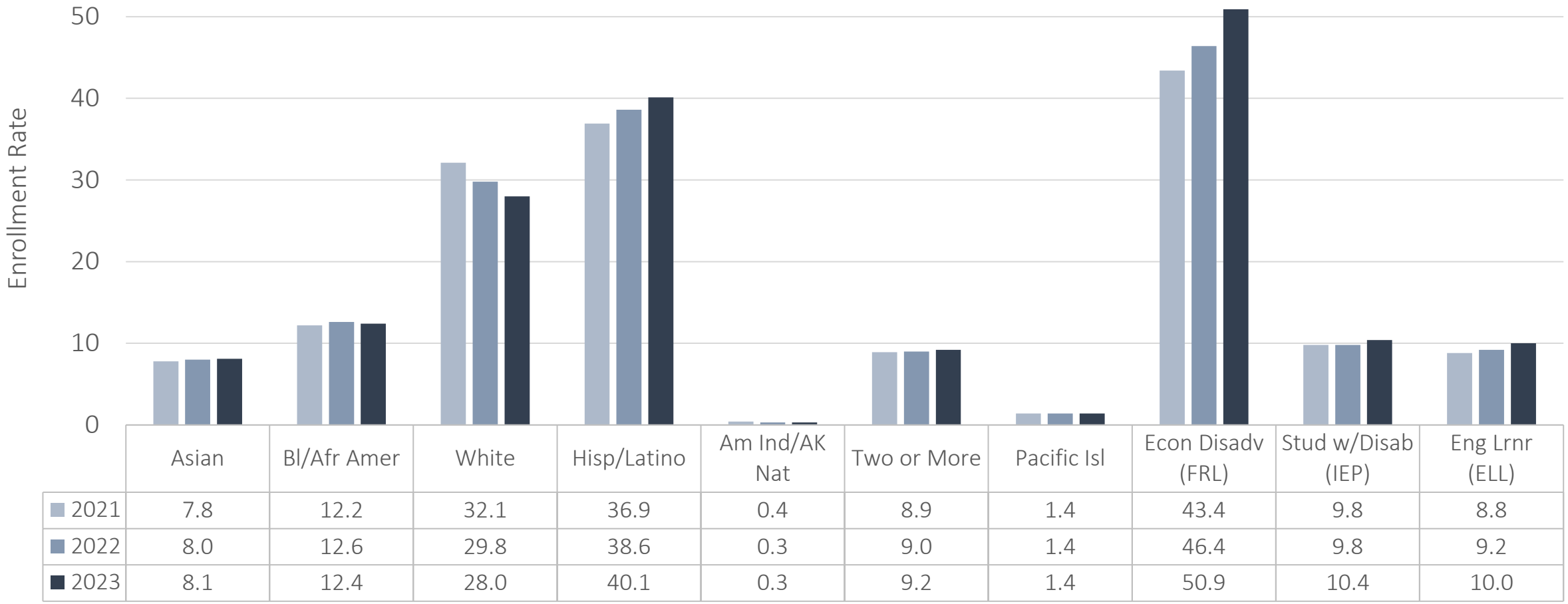


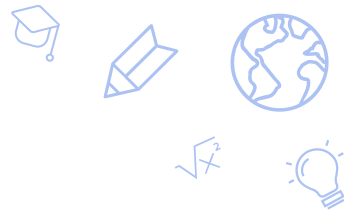
- Opened 2020-21 SY: Amplus Academy Rainbow, Explore Academy, Mater Academy East, Nevada State High School Downtown Henderson, Nevada State High School Northwest, and Pinecrest Academy Northern Nevada
- Opened 2021-22 SY: CIVICA and TEACH LV.
- Opened 2022-23 SY: Battle Born Academy, Coral Academy of Science Las Vegas Cadence, Nevada State High School North Las Vegas, pilotED Cactus Park, Pinecrest Academy Virtual, Sage Collegiate, Strong Start Academy, and Young Women’s Leadership Academy.
- Opened 2023-24 SY: Eagle NV, Pinecrest Academy Springs, and Southern NV Trades HS.

Enrollment rates are from the Nevada Department of Education (NDE) October 2023 validation day. State data were retrieved from the [NDE website](#). In the 2021-22 SY, Beacon Academy opened a second campus (Sahara) in Las Vegas to provide the in-person portion of their hybrid learning model. That campus is not included under overall totals under “Schools Opened Last Four Years” as students may attend either location and demographics cannot be easily reported between campuses.



The SPCSA's Demographics Show Steady Progress Towards Alignment with the State





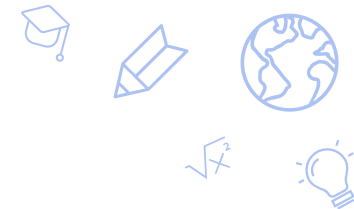
Questions?



Appendix



New Charter Schools



New Schools and Campuses Opened Since 2019-2020 School Year

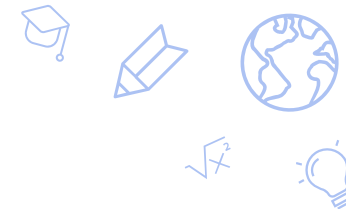
School Name	Opening Year	Location	Full Scale Grade Levels	Full Scale Enrollment	Title I
Legacy Traditional – Southwest	2019-20	Las Vegas	K-8	1,450	Yes
Nevada State High School – Southwest	2019-20	Las Vegas	11-12	188	Yes
Pinecrest Academy – Sloan Canyon	2019-20	Henderson	K-12	2,025	No
Signature Preparatory	2019-20	Henderson	K-8	1,080	Yes
Amplus Academy – Rainbow	2020-21	Las Vegas	K-5	640	Yes
Explore Academy	2020-21	North Las Vegas	6-12	570	Yes
Girls Empowerment Middle School (GEMS)*	2020-21	Las Vegas	6-8	215	N/A
Mater Academy of Nevada – East	2020-21	Las Vegas	PK-12	2,209	Yes
Nevada State High School – Downtown Henderson	2020-21	Henderson	11-12	190	No
Nevada State High School – Northwest	2020-21	Las Vegas	11-12	166	No
Pinecrest Academy of Northern Nevada	2020-21	Sparks	K-8	988	No

*School closed at the end of the 2022-23 school year.



New Schools and Campuses Opened Since 2019-2020 School Year (continued)

School Name	Opening Year	Location	Full Scale Grade Levels	Full Scale Enrollment	Title I
Beacon Academy of Nevada – East	2021-22	Las Vegas	9-12	350	Yes
CIVICA Nevada	2021-22	North Las Vegas	K-12	1,650	Yes
TEACH Las Vegas	2021-22	Las Vegas	K-12	975	Yes
Battle Born Academy	2022-23	Las Vegas	K-8	540	Yes
Coral Academy of Science – Cadence	2022-23	Henderson	K-12	1,850	Yes
Nevada State High School – North Las Vegas	2022-23	North Las Vegas	11-12	170	Yes
Pinecrest Academy – Virtual	2022-23	Henderson (Virtual)	6-12	170	No
PilotED Cactus Park	2022-23	Las Vegas	K-5	486	Yes
Sage Collegiate	2022-23	Las Vegas	K-8	588	Yes
Strong Start Academy	2022-23	Las Vegas	K-5	360	Yes
Young Women’s Leadership Academy	2022-23	Las Vegas	6-12	600	Yes



New Schools and Campuses Opened Since 2019-2020 School Year (continued)

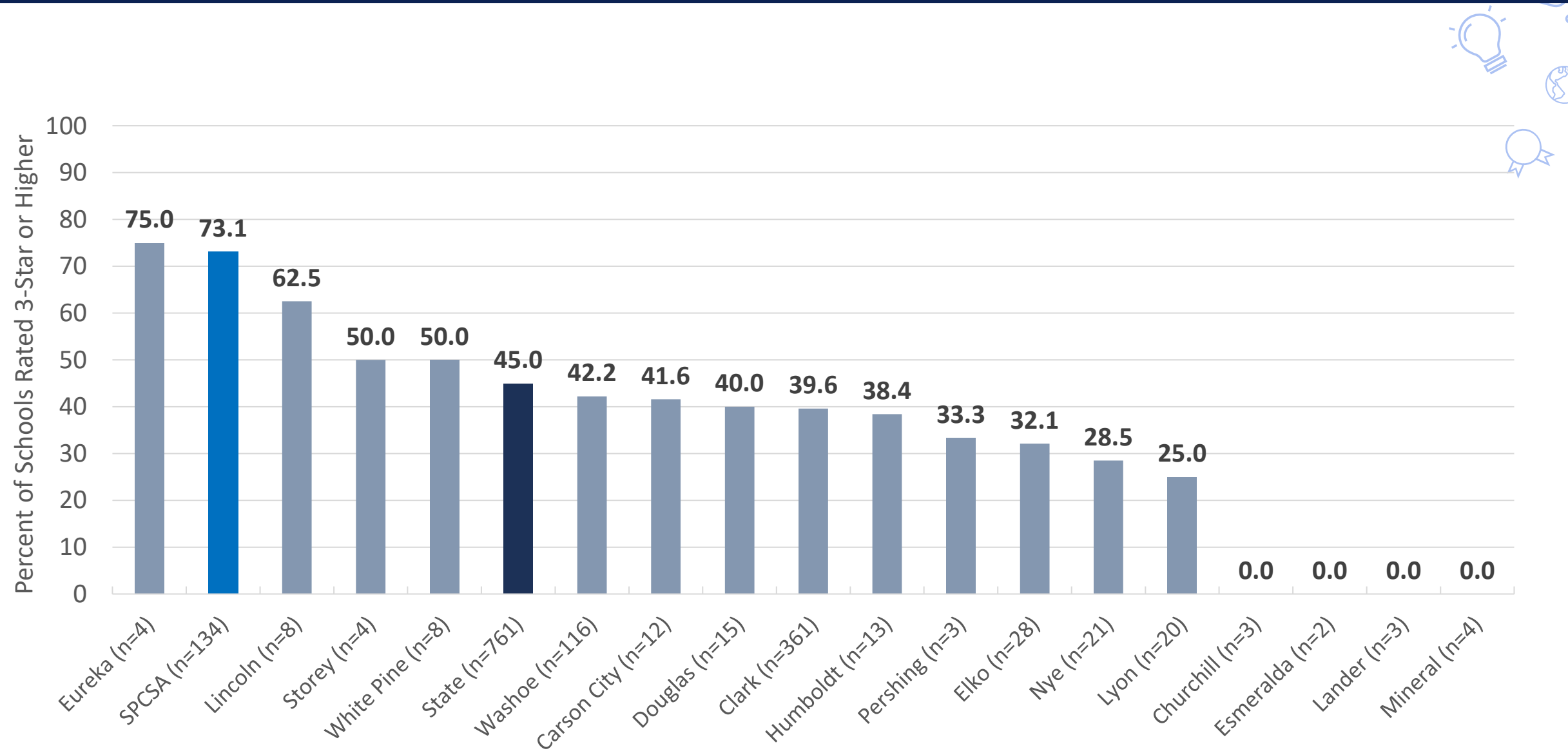
School Name	Opening Year	Location	Full Scale Grade Levels	Full Scale Enrollment	Title I
Eagle Charter School	2023-24	Las Vegas	K-8	918	YES
Pinecrest Academy – Springs	2023-24	Las Vegas	K-12	1,200	YES
Southern Nevada Trades High School	2023-24	Las Vegas	9-12	550	YES

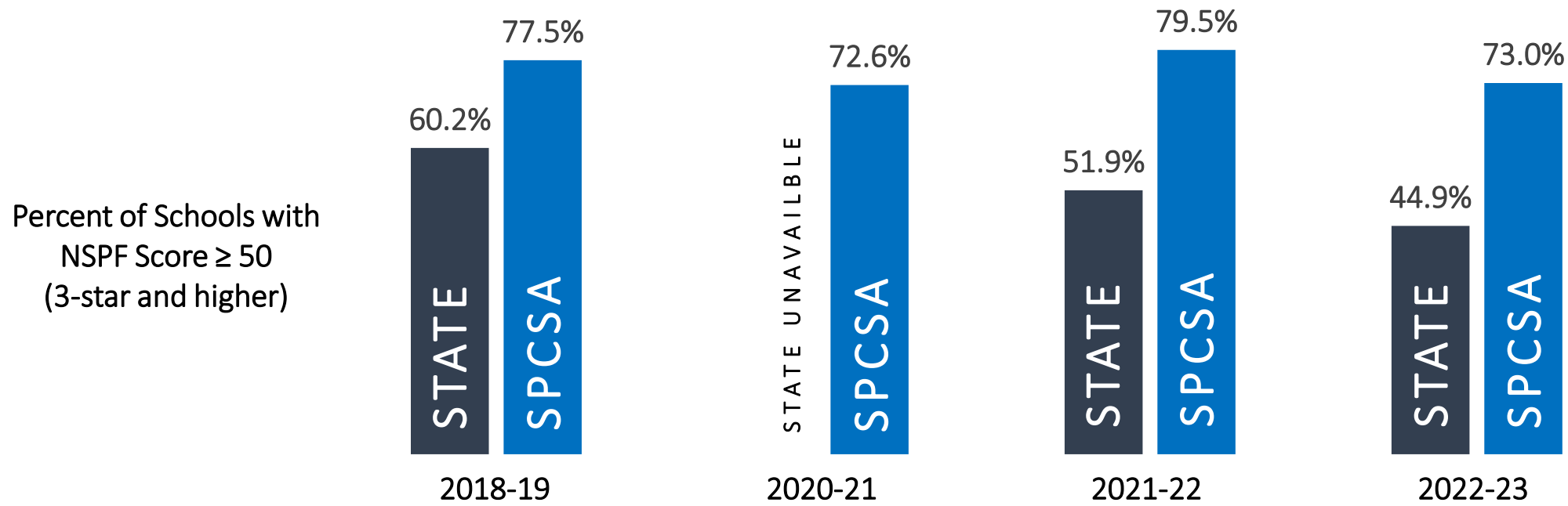
New Schools and Campuses Scheduled to Open in the 2024-2025 School Year

School Name	Opening Year	Location	Full Scale Grade Levels	Full Scale Enrollment
Vegas Vista	2024-25	Las Vegas	K-8	600
Pioneer Technical Arts Academy	2024-25	Las Vegas	K-12	1478
Do and Be Arts Academy of Excellence	2024-25	Las Vegas	K-8	630
Rooted School Las Vegas	2024-25	Las Vegas	9-12	360
Thrive Point Academy	2024-25	Las Vegas	9-12 (alternative)	450

Star Ratings

SPCSA vs. Nevada Districts: Percent of Schools with 3-Star or Higher NSPF Rating





NSPF Timeline, by School Year

2018-19: Official NDE NSPF index scores / star ratings.

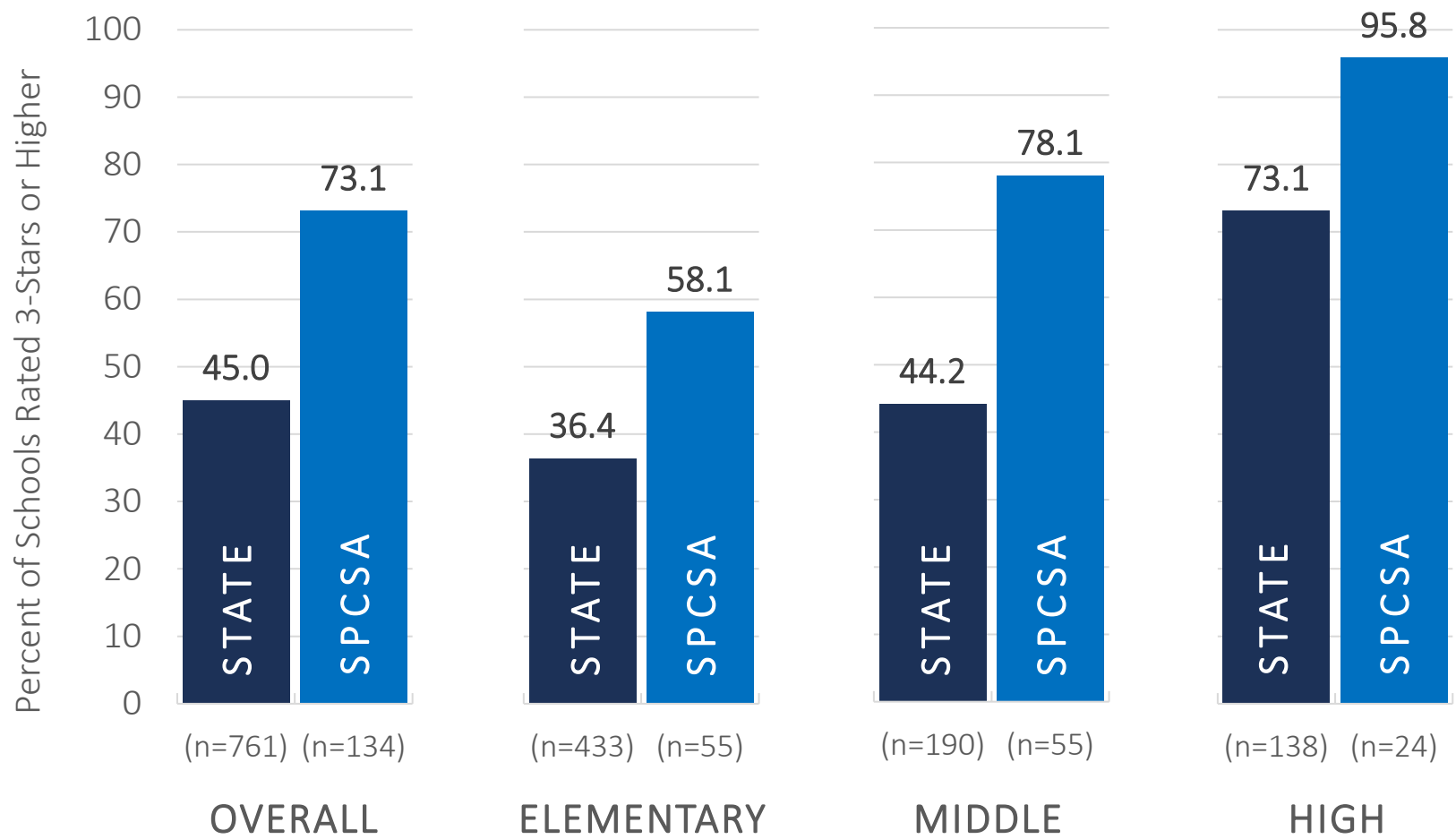
2019-20: US Dept. of Education waiver – NSPF data unavailable due to COVID.

2020-21: US Dept. of Education waiver – NSPF data available but index scores / star ratings not calculated. SPCSA performed unofficial calculations.

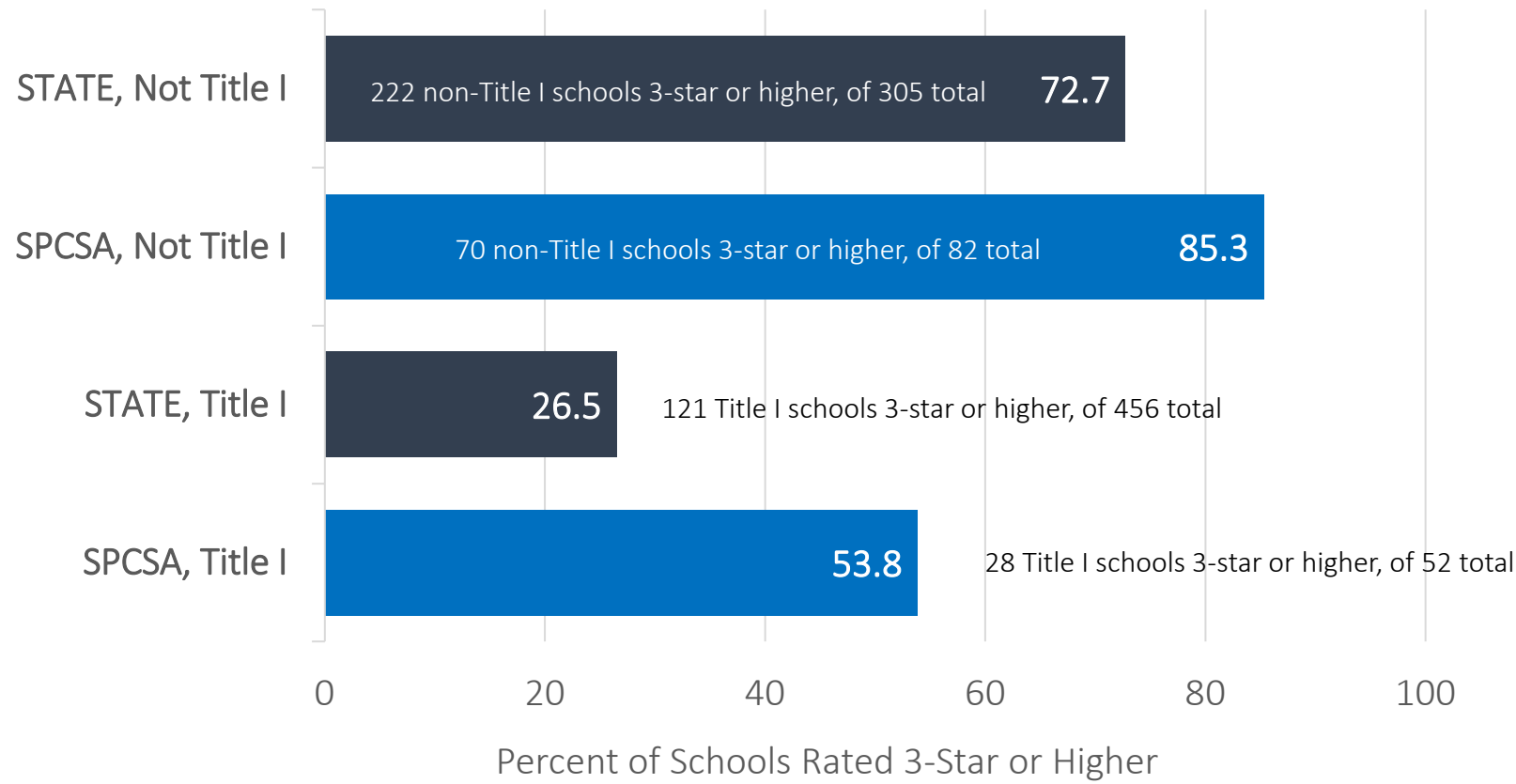
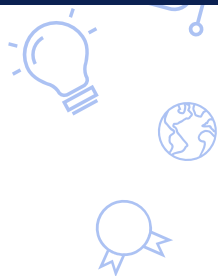
2021-22: NDE calculated NSPF index scores, but not corresponding star ratings.

2022-23: Official NDE NSPF index scores / star ratings.

SPCSA vs. State: Percent of Schools with 3-Star or Higher NSPF Rating



SPCSA vs. State: Title I School NSPF Ratings



NSPF Star Ratings by School

School	Star Rating
Alpine Acad HS	3
Amplus Durango ES	4
Amplus Durango MS	3
Amplus Durango HS	5
Amplus Rainbow ES	5
Battle Born ES	1
Battle Born MS	3
Beacon Acad HS	1
CASLV Cadence ES	2
CASLV Cadence MS	4
CASLV Centennial ES	5
CASLV Centennial MS	5
CASLV Eastgate ES	4
CASLV Eastgate MS	5
CASLV Nellis AFB ES	2
CASLV Nellis AFB MS	3
CASLV Sandy Ridge MS	3
CASLV Sandy Ridge HS	5
CASLV Tamarus ES	5
CASLV Windmill ES	4
CASLV Windmill MS	5
CIVICA ES	2
CIVICA MS	2
Democracy Prep ES	2
Democracy Prep MS	3
Democracy Prep HS	3
Discovery Hillpointe ES	2
Discovery Hillpointe MS	2
Discovery Sandhill ES	2
Doral Cactus ES	4
Doral Cactus MS	5
Doral Fire Mesa ES	2
Doral Fire Mesa MS	4
Doral North NV ES	5

School	Star Rating
Doral North NV MS	5
Doral Pebble ES	3
Doral Pebble MS	5
Doral Red Rock ES	5
Doral Red Rock MS	5
Doral Red Rock HS	4
Doral Saddle ES	5
Doral Saddle MS	4
Elko Inst Acad Achvmt ES	5
Elko Inst Acad Achvmt MS	5
Equipo Acad MS	2
Equipo Acad HS	4
Explore Acad MS	1
Explore Acad HS	NR
Founders Acad ES	3
Founders Acad MS	5
Founders Acad HS	4
Freedom Classical Acad ES	2
Freedom Classical Acad MS	4
Futuro Acad ES	3
GEMS MS	2
Honors Acad ES	1
Honors Acad MS	3
Imagine Mtn View ES	1
Imagine Mtn View MS	3
Leadership Acad MS	3
Leadership Acad HS	4
Learning Bridge ES	2
Learning Bridge MS	5
Legacy Cadence ES	2
Legacy Cadence MS	2
Legacy N Valley ES	2
Legacy N Valley MS	3
Legacy Southwest ES	3

School	Star Rating
Legacy Southwest MS	4
Mater Bonanza ES	3
Mater Bonanza MS	3
Mater East Las Vegas ES	2
Mater East Las Vegas MS	3
Mater East Las Vegas HS	NR
Mater Mtn Vista ES	3
Mater Mtn Vista MS	3
Mater North NV ES	3
Mater North NV MS	3
Nevada Virtual MS	2
Nevada Virtual HS	3
NSHS Downtown HS	5
NSHS Dtnw Henderson HS	5
NSHS Henderson HS	5
NSHS Meadowood HS	5
NSHS North Las Vegas HS	NR
NSHS Northwest HS	5
NSHS Southwest HS	5
NSHS Summerlin HS	5
NSHS Sunrise HS	5
NV Connections Acad HS	3
NV Prep ES	3
NV Prep MS	3
NV Rise ES	1
Oasis Acad ES	4
Oasis Acad MS	5
Oasis Acad HS	5
pilotED Cactus Park ES	NR
Pinecrest Cadence ES	5
Pinecrest Cadence MS	3
Pinecrest Cadence HS	5
Pinecrest Horizon ES	5
Pinecrest Inspirada ES	4

School	Star Rating
Pinecrest Inspirada MS	5
Pinecrest North NV ES	4
Pinecrest North NV MS	5
Pinecrest Sloan Canyon ES	5
Pinecrest Sloan Canyon MS	4
Pinecrest Sloan Canyon HS	NR
Pinecrest St Rose ES	5
Pinecrest St Rose MS	5
Pinecrest Virtual MS	2
Pinecrest Virtual HS	NR
Quest Northwest ES	1
Quest Northwest MS	4
Sage Collegiate ES	2
Signature Prep ES	2
Signature Prep MS	2
Silver Sands ES	1
Silver Sands MS	3
SLAM Acad ES	1
SLAM Acad MS	3
SLAM Acad HS	4
Somerset Aliante ES	3
Somerset Aliante MS	4
Somerset Lone Mtn ES	5
Somerset Lone Mtn MS	3
Somerset Losee ES	3
Somerset Losee MS	2
Somerset Losee HS	3
Somerset North Las Vegas ES	1
Somerset Sky Pointe ES	5
Somerset Sky Pointe MS	5
Somerset Sky Pointe HS	3
Somerset Skye Canyon ES	5
Somerset Skye Canyon MS	5
Somerset Stephanie ES	3

School	Star Rating
Somerset Stephanie MS	5
Strong Start Acad ES	NR
TEACH LV ES	1
TEACH LV MS	1
Yng Wmn's Ldrshp Acad MS	2
Yng Wmn's Ldrshp Acad HS	NR

NR = Not Rated (school did not meet NSPF rating requirements)

Proficiency on State Assessments

3rd-8th Grade Smarter Balanced Assessment: SPCSA vs. State Proficiency Trends

By race/ethnicity

2018-19 to 2022-23

 Indicates SPCSA rate \geq State rate

 Indicates SPCSA rate $<$ State rate

Year	Group	STATE ELA % Proficient	SPCSA ELA % Proficient	STATE Math % Proficient	SPCSA Math % Proficient
2018-2019	Overall	48.5	60.0	37.5	48.4
2020-2021	Overall	41.4	53.2	26.3	36.4
2021-2022	Overall	43.7	56.1	29.8	42.2
2022-2023	Overall	41.0	53.3	31.3	44.3
2018-2019	Am In/AK Native	32.5	63.3	21.3	35.6
2020-2021	Am In/AK Native	25.8	46.1	12.2	25.0
2021-2022	Am In/AK Native	28.1	50.4	15.7	33.6
2022-2023	Am In/AK Native	23.9	44.4	16.3	34.2
2018-2019	Asian	70.8	78.2	64.4	70.9
2020-2021	Asian	65.4	73.1	51.4	59.9
2021-2022	Asian	69.1	76.8	56.4	67.3
2022-2023	Asian	66.1	73.8	59.3	68.1
2018-2019	Black	30.2	40.6	18.8	27.5
2020-2021	Black	25.3	37.2	10.8	18.0
2021-2022	Black	27.1	40.1	13.5	23.3
2022-2023	Black	25.6	36.6	14.8	24.3
2018-2019	Hispanic	40.6	50.8	29.0	37.8
2020-2021	Hispanic	31.3	42.6	16.7	25.6
2021-2022	Hispanic	35.5	46.5	21.1	31.5
2022-2023	Hispanic	32.9	44.7	22.4	34.2
2018-2019	Pacific Islander	47.9	57.2	37.6	46.7
2020-2021	Pacific Islander	37.8	52.1	22.8	35.3
2021-2022	Pacific Islander	38.6	53.6	24.6	37.1
2022-2023	Pacific Islander	36.4	47.7	28.1	41.9
2018-2019	Two or More Races	56.6	65.2	44.1	53.2
2020-2021	Two or More Races	49.9	60.3	32.8	43.6
2021-2022	Two or More Races	51.8	62.8	36.8	48.8
2022-2023	Two or More Races	50.1	59.8	39.1	50.7
2018-2019	White	61.0	67.4	50.8	56.9
2020-2021	White	53.8	62.7	38.2	46.2
2021-2022	White	56.7	66.1	43.6	53.6
2022-2023	White	53.7	63.8	45.2	57.0

Data retrieved from the [Nevada Accountability Portal](#), which uses slightly different rules from the NSPF. Data displayed include the four most recent available years.

By ELL/FRL/IEP student groups

2018-19 to 2022-23

- Indicates SPCSA rate ≥ State rate
- Indicates SPCSA rate < State rate

Year	Group	STATE ELA - % Proficient	SPCSA ELA - % Proficient	STATE Math - % Proficient	SPCSA Math - % Proficient
2018-2019	Overall	48.5	60.0	37.5	48.4
2020-2021	Overall	41.4	53.2	26.3	36.4
2021-2022	Overall	43.7	56.1	29.8	42.2
2022-2023	Overall	41.0	53.3	31.3	44.3
2018-2019	EL	15.8	26.1	14.6	23.6
2020-2021	EL	8.3	16.0	6.1	13.4
2021-2022	EL	12.8	21.1	9.8	17.6
2022-2023	EL	12.0	18.9	10.9	18.8
2018-2019	FRL	39.3	46.1	28.4	34.0
2020-2021	FRL	32.5	39.8	18.1	23.1
2021-2022	FRL	31.8	44.2	18.8	29.1
2022-2023	FRL	30.1	40.9	20.7	31.1
2018-2019	IEP	13.4	23.6	10.8	19.8
2020-2021	IEP	12.9	20.5	8.5	13.6
2021-2022	IEP	14.0	22.0	10.5	17.8
2022-2023	IEP	13.9	22.5	11.5	20.4

5th and 8th Grade Science Assessment: SPCSA vs. State Proficiency Trends

By race/ethnicity

2018-19 to 2022-23

 Indicates SPCSA rate ≥ State rate

 Indicates SPCSA rate < State rate

Year	Group	STATE 5 TH GRADE % Proficient	SPCSA 5 TH GRADE % Proficient	STATE 8 TH GRADE % Proficient	SPCSA 8 TH GRADE % Proficient
2018-2019	Overall	24.6	34.9	36.8	44.8
2020-2021	Overall	18.9	28.6	34.4	43.5
2021-2022	Overall	20.0	30.4	34.0	44.6
2022-2023	Overall	19.1	29.4	32.7	43.0
2018-2019	Am In/AK Native	13.4	n<10	25.9	n<10
2020-2021	Am In/AK Native	9.3	n<10	17.5	n<10
2021-2022	Am In/AK Native	8.0	n<10	25.8	50.0
2022-2023	Am In/AK Native	11.0	n<10	22.2	n<10
2018-2019	Asian	43.6	50.5	59.9	62.0
2020-2021	Asian	35.4	44.5	54.9	59.6
2021-2022	Asian	38.0	52.7	56.5	63.5
2022-2023	Asian	38.1	50.8	56.7	63.1
2018-2019	Black	9.7	16.7	17.7	23.2
2020-2021	Black	7.5	14.0	17.0	25.6
2021-2022	Black	8.2	17.4	16.8	28.5
2022-2023	Black	8.1	14.9	15.2	24.2
2018-2019	Hispanic	16.3	25.8	27.0	35.3
2020-2021	Hispanic	10.8	19.3	24.9	33.5
2021-2022	Hispanic	12.4	19.3	24.7	33.7
2022-2023	Hispanic	12.0	19.3	24.3	33.7
2018-2019	Pacific Islander	19.4	26.2	29.7	35.8
2020-2021	Pacific Islander	12.7	25.8	30.7	52.7
2021-2022	Pacific Islander	13.0	28.3	27.4	40.0
2022-2023	Pacific Islander	13.1	18.1	26.6	33.8
2018-2019	Two or More Races	29.9	37.6	45.1	52.3
2020-2021	Two or More Races	25.2	31.6	41.4	52.6
2021-2022	Two or More Races	26.0	34.8	42.7	53.0
2022-2023	Two or More Races	23.7	33.3	40.3	51.0
2018-2019	White	37.9	42.9	51.9	54.6
2020-2021	White	29.7	36.4	46.2	54.5
2021-2022	White	32.5	40.9	49.3	57.2
2022-2023	White	30.7	40.6	47.4	56.1

Data retrieved from the [Nevada Accountability Portal](#), which uses slightly different rules from the NSPF. Data displayed include the four most recent available years.

5th and 8th Grade Science Assessment: SPCSA vs. State Proficiency Trends

By ELL/FRL/IEP student groups

2018-19 to 2022-23

 Indicates SPCSA rate \geq State rate

 Indicates SPCSA rate $<$ State rate

Year	Group	STATE 5 TH GRADE % Proficient	SPCSA 5 TH GRADE % Proficient	STATE 8 TH GRADE % Proficient	SPCSA 8 TH GRADE % Proficient
2018-2019	Overall	24.6	34.9	36.8	44.8
2020-2021	Overall	18.9	28.6	34.4	43.5
2021-2022	Overall	20.0	30.4	34.0	44.6
2022-2023	Overall	19.1	29.4	32.7	43.0
2018-2019	EL	<5.0	7.7	<5.0	12.6
2020-2021	EL	<5.0	5.5	<5.0	7.0
2021-2022	EL	<5.0	<5.0	<5.0	7.2
2022-2023	EL	<5.0	<5.0	<5.0	8.3
2018-2019	FRL	17.0	23.9	26.0	33.7
2020-2021	FRL	12.4	17.2	26.1	31.1
2021-2022	FRL	11.1	19.5	22.8	31.8
2022-2023	FRL	10.9	17.3	22.5	29.9
2018-2019	IEP	7.0	12.7	7.2	12.5
2020-2021	IEP	6.2	11.6	7.6	13.3
2021-2022	IEP	6.6	11.7	8.5	11.6
2022-2023	IEP	6.3	12.5	7.8	13.3

Data retrieved from the [Nevada Accountability Portal](#), which uses slightly different rules from the NSPF. Data displayed include the four most recent available years.

11th Grade ACT Assessment: SPCSA vs. State Proficiency Trends

By race/ethnicity

2018-19 to 2022-23

 Indicates SPCSA rate ≥ State rate

 Indicates SPCSA rate < State rate

Year	Group	STATE ELA % Proficient	SPCSA ELA % Proficient	STATE Math % Proficient	SPCSA Math % Proficient
2019-2020	Overall	48.8	57.8	25.8	27.1
2020-2021	Overall	46.7	57.5	22.4	27.8
2021-2022	Overall	45.2	53.3	20.5	24.5
2022-2023	Overall	45.9	53.3	19.7	24.8
2019-2020	Am In/AK Native	36.7	<5.0	17.0	<5.0
2020-2021	Am In/AK Native	33.8	<5.0	15.1	<5.0
2021-2022	Am In/AK Native	34.9	<5.0	12.0	<5.0
2022-2023	Am In/AK Native	31.8	63.6	8.8	18.1
2019-2020	Asian	69.7	84.2	49.5	54.2
2020-2021	Asian	69.8	76.1	44.3	52.2
2021-2022	Asian	69.7	79.3	44.0	55.2
2022-2023	Asian	68.7	75.1	41.9	49.6
2019-2020	Black	30.3	38.8	10.0	14.2
2020-2021	Black	28.8	41.2	8.4	12.1
2021-2022	Black	25.8	37.8	6.8	9.6
2022-2023	Black	27.7	33.5	7.3	10.6
2019-2020	Hispanic	37.4	46.3	15.3	16.2
2020-2021	Hispanic	34.4	43.7	12.6	14.3
2021-2022	Hispanic	33.0	41.3	11.4	13.6
2022-2023	Hispanic	34.8	42.9	11.2	15.2
2019-2020	Pacific Islander	45.2	51.4	19.8	<5.0
2020-2021	Pacific Islander	38.8	58.8	18.3	28.6
2021-2022	Pacific Islander	38.3	35.9	14.6	<5.0
2022-2023	Pacific Islander	43.9	55.0	17.7	26.7
2019-2020	Two or More Races	58.0	72.1	31.8	32.4
2020-2021	Two or More Races	54.7	66.2	26.7	35.8
2021-2022	Two or More Races	56.0	58.4	27.6	30.1
2022-2023	Two or More Races	57.5	64.1	25.0	33.8
2019-2020	White	63.9	67.2	38.8	35.0
2020-2021	White	62.1	68.7	34.1	37.4
2021-2022	White	62.0	65.9	31.9	34.0
2022-2023	White	61.4	64.7	31.0	33.2

Data retrieved from the [Nevada Accountability Portal](#), which uses slightly different rules from the NSPF. Data displayed include the four most recent available years.

11th Grade ACT Assessment: SPCSA vs. State Proficiency Trends

By ELL/FRL/IEP student groups

2018-19 to 2022-23

 Indicates SPCSA rate \geq State rate

 Indicates SPCSA rate $<$ State rate


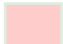
Year	Group	STATE ELA % Proficient	SPCSA ELA % Proficient	STATE Math % Proficient	SPCSA Math % Proficient
2019-2020	Overall	48.8	57.8	25.8	27.1
2020-2021	Overall	46.7	57.5	22.4	27.8
2021-2022	Overall	45.2	53.3	20.5	24.5
2022-2023	Overall	45.9	53.3	19.7	24.8
2019-2020	EL	<5.0	<5.0	<5.0	<5.0
2020-2021	EL	<5.0	<5.0	<5.0	<5.0
2021-2022	EL	<5.0	9.7	<5.0	<5.0
2022-2023	EL	<5.0	6.3	<5.0	<5.0
2019-2020	FRL	37.1	44.2	16.4	15.4
2020-2021	FRL	37.2	44.7	15.2	16.1
2021-2022	FRL	30.7	41.4	10.3	13.4
2022-2023	FRL	31.8	40.7	10.0	13.5
2019-2020	IEP	8.8	19.2	<5.0	<5.0
2020-2021	IEP	7.8	13.1	<5.0	5.5
2021-2022	IEP	8.6	17.3	<5.0	5.7
2022-2023	IEP	10.0	19.6	<5.0	<5.0

High School Science Assessment: SPCSA vs. State Proficiency Trends

Year	Group	STATE Science % Proficient	SPCSA Science % Proficient
2018-2019	Overall	26.9	30.5
2020-2021	Overall	29.7	34.2
2021-2022	Overall	20.7	27.3
2022-2023	Overall	20.1	23.3
2018-2019	Am In/AK Native	16.4	18.7
2020-2021	Am In/AK Native	17.6	n<10
2021-2022	Am In/AK Native	14.0	10.0
2022-2023	Am In/AK Native	10.3	15.3
2018-2019	Asian	48.9	50.0
2020-2021	Asian	54.6	56.1
2021-2022	Asian	41.2	47.6
2022-2023	Asian	39.5	44.6
2018-2019	Black	11.5	14.9
2020-2021	Black	13.7	16.7
2021-2022	Black	8.7	15.7
2022-2023	Black	8.4	10.7
2018-2019	Hispanic	18.6	22.7
2020-2021	Hispanic	19.9	24.9
2021-2022	Hispanic	13.5	17.2
2022-2023	Hispanic	12.7	15.0
2018-2019	Pacific Islander	20.7	20.0
2020-2021	Pacific Islander	22.3	29.8
2021-2022	Pacific Islander	15.2	24.6
2022-2023	Pacific Islander	13.6	14.5
2018-2019	Two or More Races	31.1	32.7
2020-2021	Two or More Races	35.6	34.8
2021-2022	Two or More Races	25.8	35.7
2022-2023	Two or More Races	25.4	24.0
2018-2019	White	38.7	38.1
2020-2021	White	39.0	44.2
2021-2022	White	31.4	37.9
2022-2023	White	31.7	35.2

Year	Group	STATE Science % Proficient	SPCSA Science % Proficient
2018-2019	Overall	26.9	30.5
2020-2021	Overall	29.7	34.2
2021-2022	Overall	20.7	27.3
2022-2023	Overall	20.1	23.3
2018-2019	EL	<5.0	<5.0
2020-2021	EL	<5.0	6.0
2021-2022	EL	<5.0	<5.0
2022-2023	EL	<5.0	<5.0
2018-2019	FRL	18.4	20.6
2020-2021	FRL	22.0	26.2
2021-2022	FRL	12.8	19.7
2022-2023	FRL	12.2	14.4
2018-2019	IEP	<5.0	12.6
2020-2021	IEP	7.1	11.4
2021-2022	IEP	5.0	10.7
2022-2023	IEP	<5.0	10.1

2018-19 to 2022-23

-  Indicates SPCSA rate \geq State rate
-  Indicates SPCSA rate $<$ State rate

Data retrieved from the [Nevada Accountability Portal](#), which uses slightly different rules from the NSPF. Data displayed include the four most recent available years.

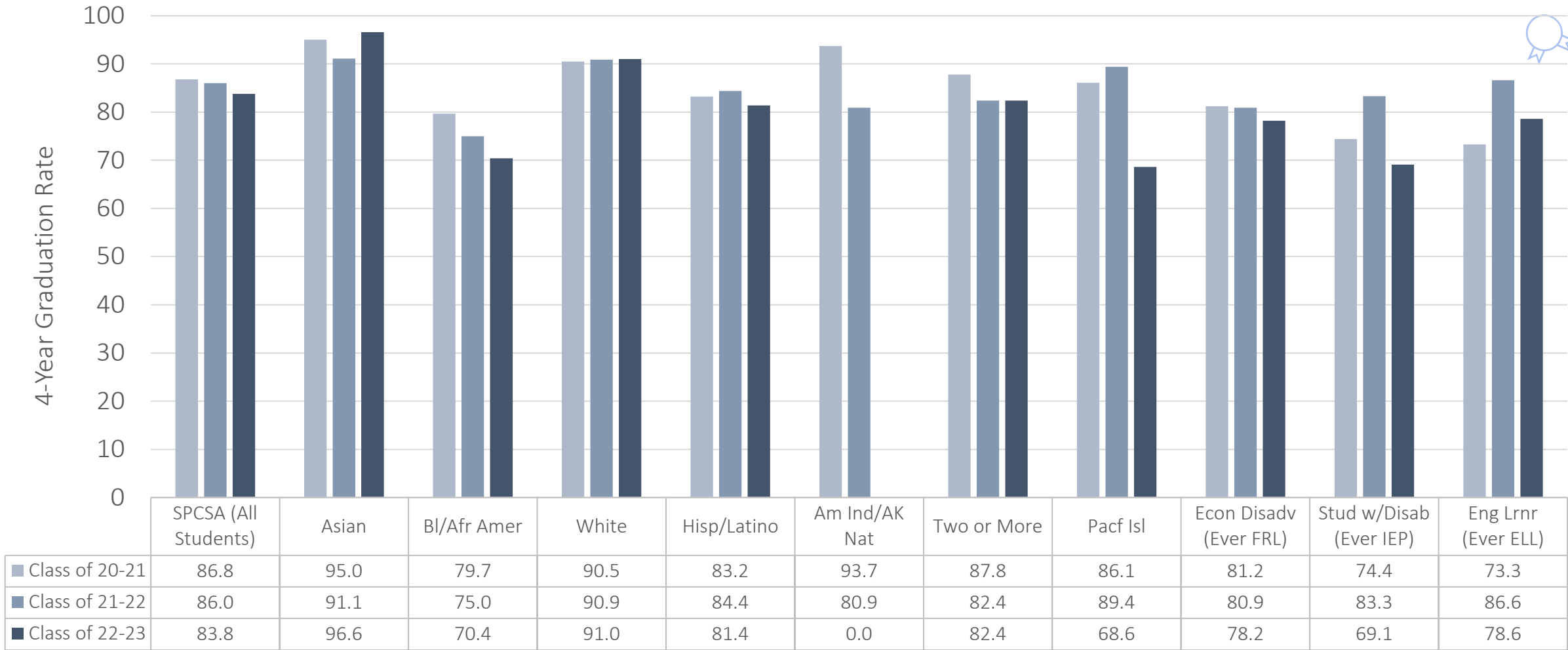
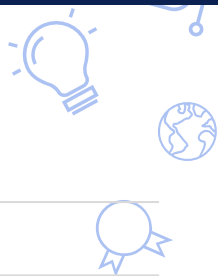
Graduation Rates

4-Year Graduation Rates: SPCSA Schools (Class of 2022-23)

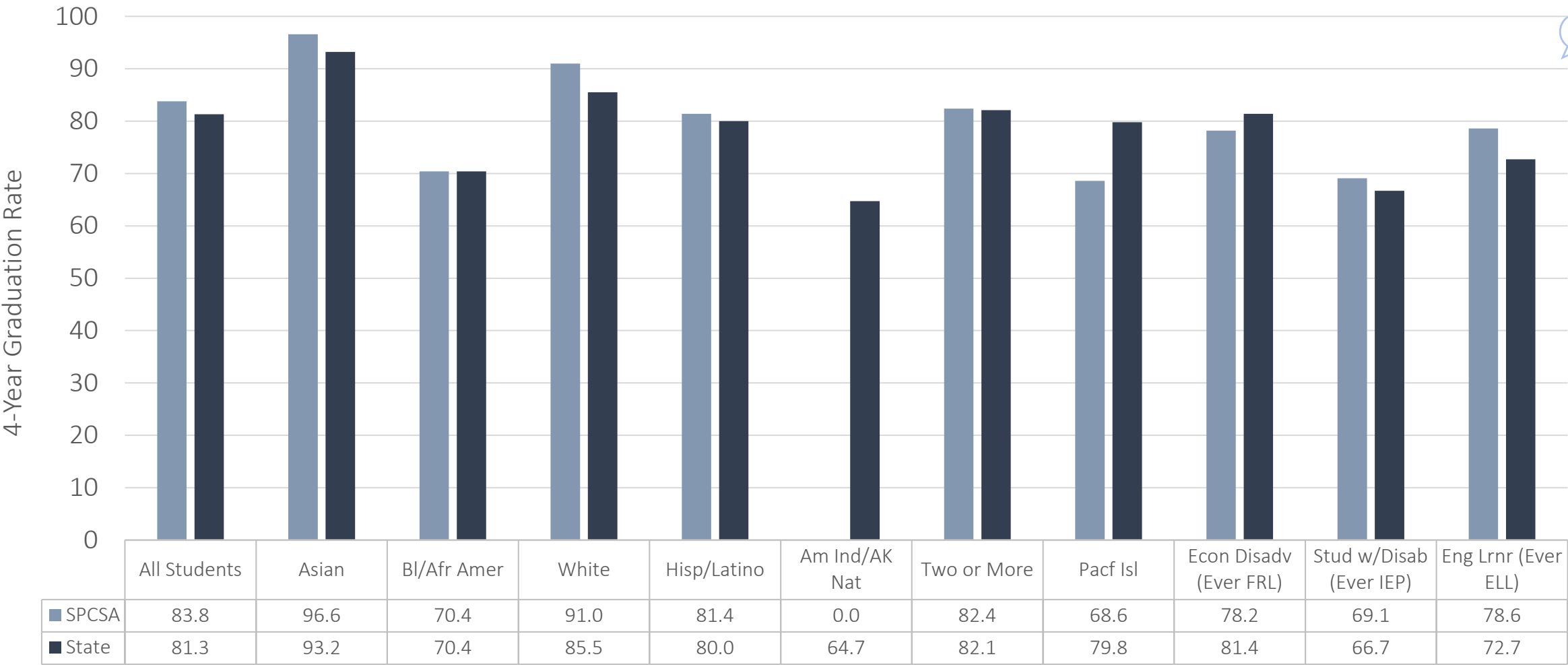
Entity	Overall	Asian	Bl/Afr Amer	White	Hispanic /Latino	Amer Ind/AK Native	Two or More	Pacific Islander	Econ Disadv (FRL)	Stud w/Disab (IEP)	Eng Lrn (ELL)	CTE	Military Connected	Homeless	Foster
STATE	81.3	93.2	70.4	85.5	80.0	64.7	82.1	79.8	81.4	66.7	72.7	95.8	84.9	61.1	42.0
SPCSA	83.8	96.6	70.4	91.0	81.4	*	82.4	68.6	78.2	69.1	78.6	96.9	77.7	43.4	32.2
SPCSA Excluding Beacon	95.1	99.4	94.5	94.7	95.4	75.0	93.9	89.4	93.7	91.4	95.7	98.7	92.3	90.0	*
Alpine Acad	90.9	N/A	N/A	92.3	*	N/A	*	N/A	*	*	N/A	N/A	N/A	*	N/A
Amplus Durango	100.0	>95.0	>95.0	>95.0	>95.0	N/A	*	*	>95.0	*	*	>95.0	N/A	N/A	N/A
Beacon Acad	15.2	*	7.5	22.7	15.6	*	30.3	7.6	15.4	21.9	17.9	6.6	*	<5.0	24.5
CASLV Sandy Ridge	100.0	>95.0	*	>95.0	>95.0	N/A	>95.0	*	>95.0	*	>95.0	*	N/A	*	N/A
Democracy Prep	91.1	*	>95.0	*	87.5	N/A	N/A	N/A	91.1	*	90.9	N/A	N/A	*	N/A
Doral Red Rock	100.0	>95.0	>95.0	>95.0	>95.0	*	>95.0	*	>95.0	>95.0	>95.0	>95.0	N/A	*	N/A
Equipo Acad	100.0	*	*	*	>95.0	N/A	N/A	N/A	>95.0	*	>95.0	N/A	N/A	*	N/A
Founders Acad	100.0	*	*	>95.0	*	N/A	*	N/A	>95.0	*	*	*	N/A	*	N/A
Leadership Acad	87.5	N/A	N/A	90.0	*	N/A	*	N/A	*	*	*	N/A	N/A	N/A	N/A
Nevada Connections Acad	81.4	*	71.4	85.4	82.6	*	71.4	*	78.6	76.6	81.8	94.1	*	*	N/A
Nevada Virtual Charter	87.3	*	92.0	86.7	87.6	*	*	75.0	85.4	83.7	91.6	>95.0	N/A	84.6	N/A
NSHS Downtown	100.0	*	*	*	>95.0	N/A	*	N/A	>95.0	*	>95.0	>95.0	N/A	*	N/A
NSHS Dtnw Henderson	98.4	*	*	>95.0	94.1	N/A	*	N/A	>95.0	*	*	>95.0	N/A	N/A	N/A
NSHS Henderson	98.3	>95.0	*	>95.0	>95.0	N/A	*	*	>95.0	*	>95.0	>95.0	*	*	*
NSHS Meadowwood	93.3	*	N/A	*	*	N/A	*	N/A	*	N/A	*	*	N/A	*	N/A
NSHS North Las Vegas	100.0	N/A	*	*	>95.0	N/A	*	N/A	>95.0	N/A	*	*	N/A	N/A	N/A
NSHS Northwest	98.5	*	>95.0	>95.0	>95.0	N/A	*	*	>95.0	*	*	>95.0	*	N/A	N/A
NSHS Southwest	100.0	*	>95.0	>95.0	>95.0	N/A	*	N/A	>95.0	*	*	>95.0	N/A	*	N/A
NSHS Summerlin	97.4	*	90.9	>95.0	>95.0	N/A	*	*	>95.0	*	>95.0	>95.0	*	*	*
NSHS Sunrise	100.0	*	>95.0	*	>95.0	N/A	*	N/A	>95.0	*	*	>95.0	N/A	*	N/A
Oasis Acad	100.0	*	N/A	>95.0	>95.0	N/A	*	N/A	>95.0	*	*	N/A	N/A	*	N/A
Pinecrest Cadence	98.9	*	*	>95.0	>95.0	N/A	*	N/A	>95.0	*	*	>95.0	N/A	*	N/A
Pinecrest Sloan Canyon	97.8	92.8	*	>95.0	>95.0	N/A	>95.0	*	94.1	>95.0	*	>95.0	*	N/A	*
SLAM NV	96.0	*	>95.0	>95.0	93.9	*	*	*	>95.0	93.7	84.2	>95.0	*	*	*
Somerset Losee	97.6	*	>95.0	>95.0	>95.0	N/A	*	*	>95.0	93.3	91.3	>95.0	*	*	*
Somerset Sky Pointe	98.8	*	>95.0	>95.0	>95.0	N/A	>95.0	*	>95.0	>95.0	*	>95.0	N/A	*	N/A

Graduation rates are from the Nevada Department of Education (NDE) class of 2022-23 4-year adjusted cohort graduation rates. To protect student privacy, rates associated with populations less than 10 students are displayed with an asterisk (*), and extreme values less than 5 (aside from 0) or greater than 95 percent are shown as <5.0 and >95.0, respectively. N/A indicates the population did not exist.

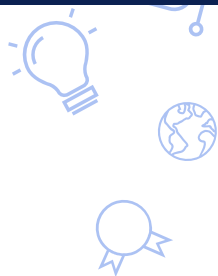
4-Year Graduation Rates: SPCSA Student Group Trends



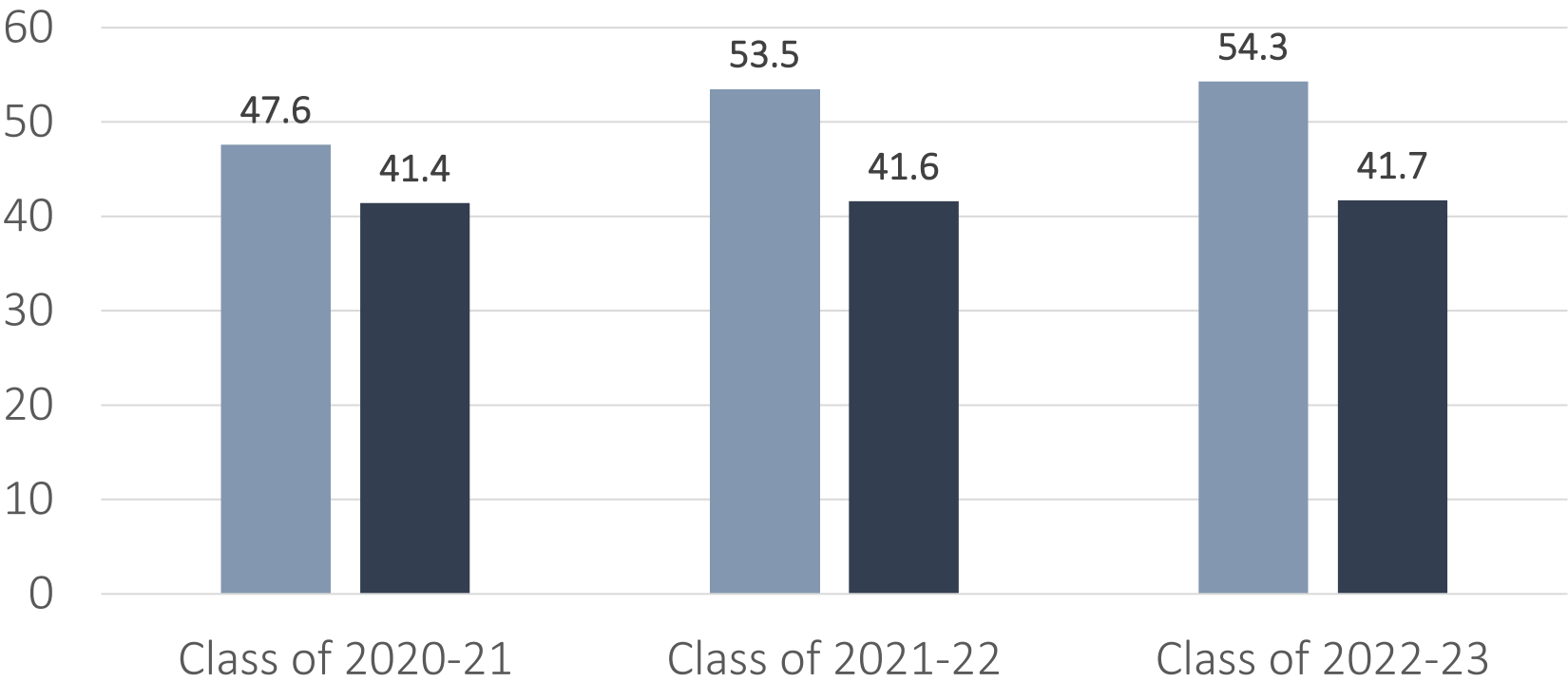
4-Year Graduation Rates: SPCSA Comparison to State (Class of 2022-23)



Advanced or CCR Diploma Rates: SPCSA Comparison to State

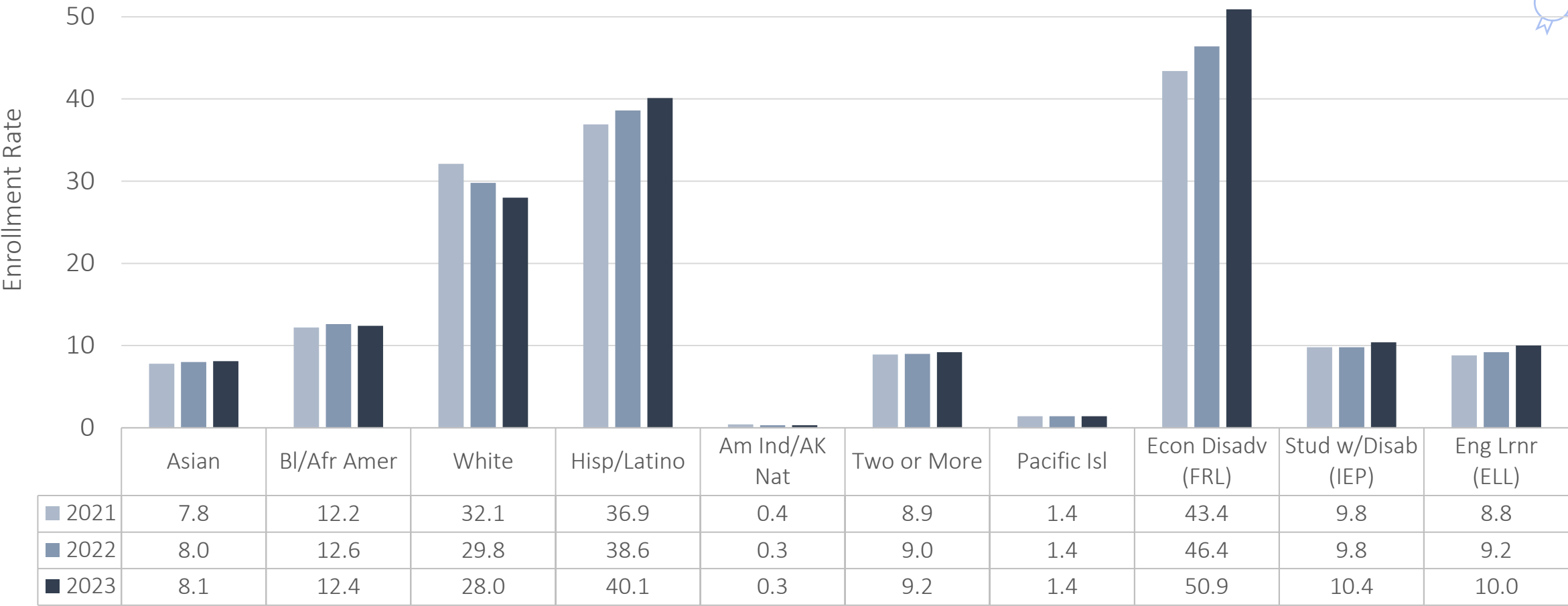
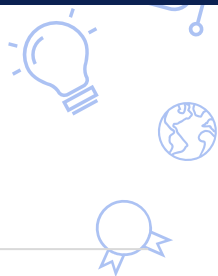


Percent of
Graduates
with
Advanced or
CCR Diploma

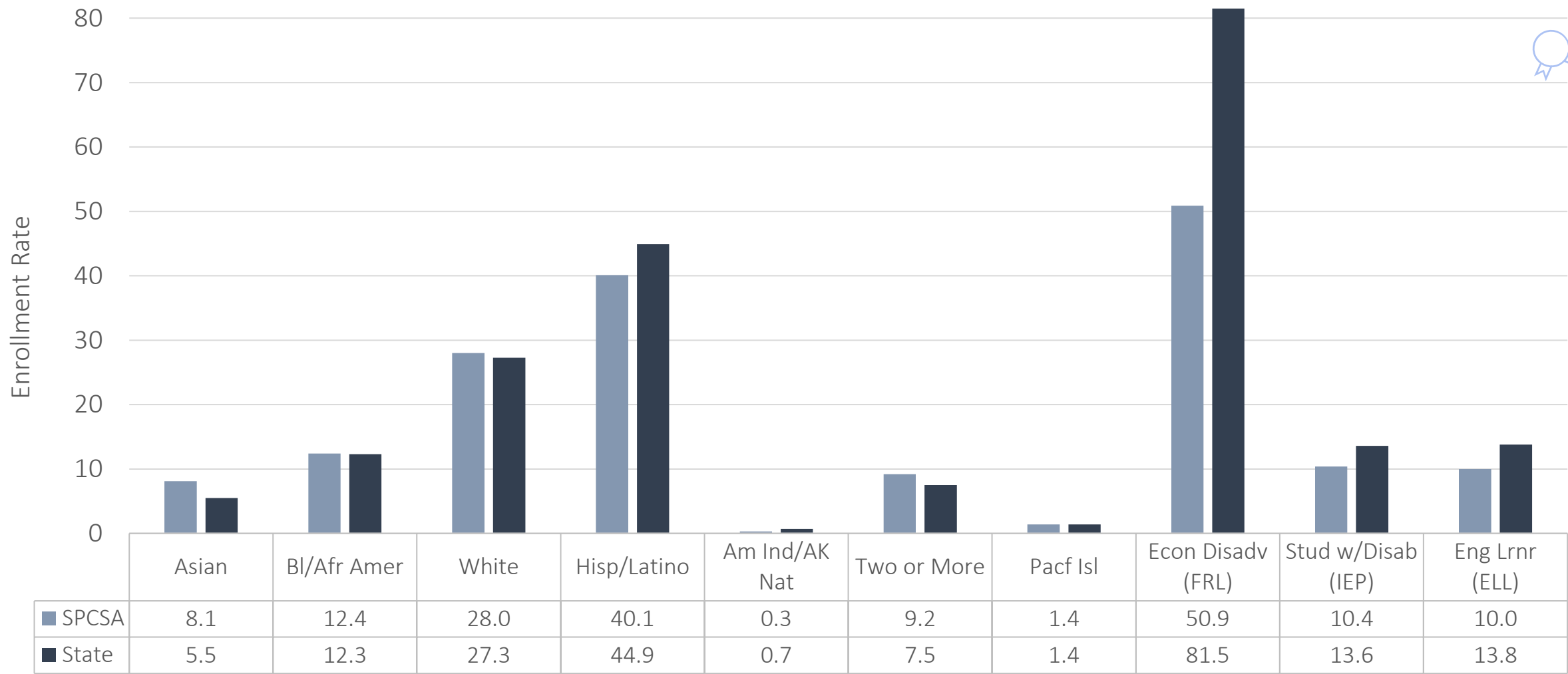


Enrollment and Demographics

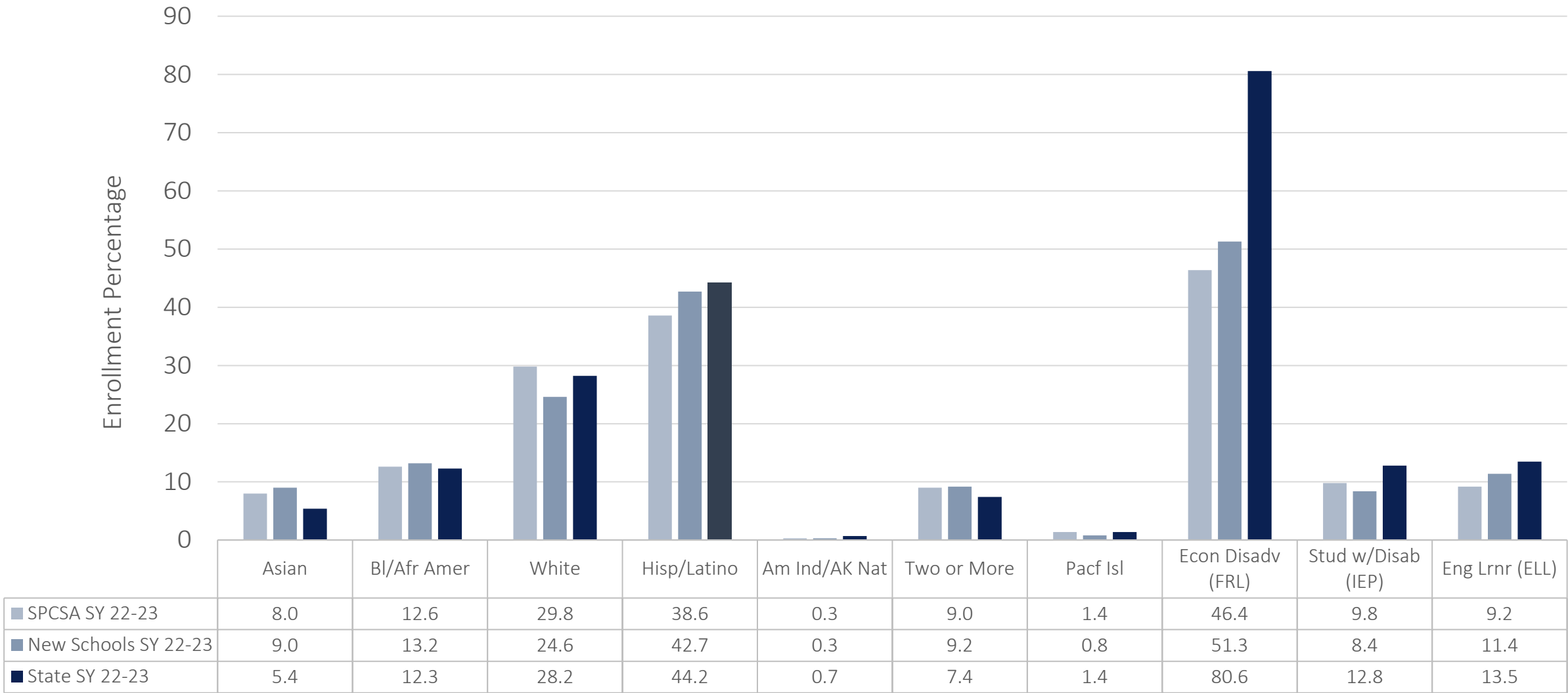
Enrollment: SPCSA Student Group Trends



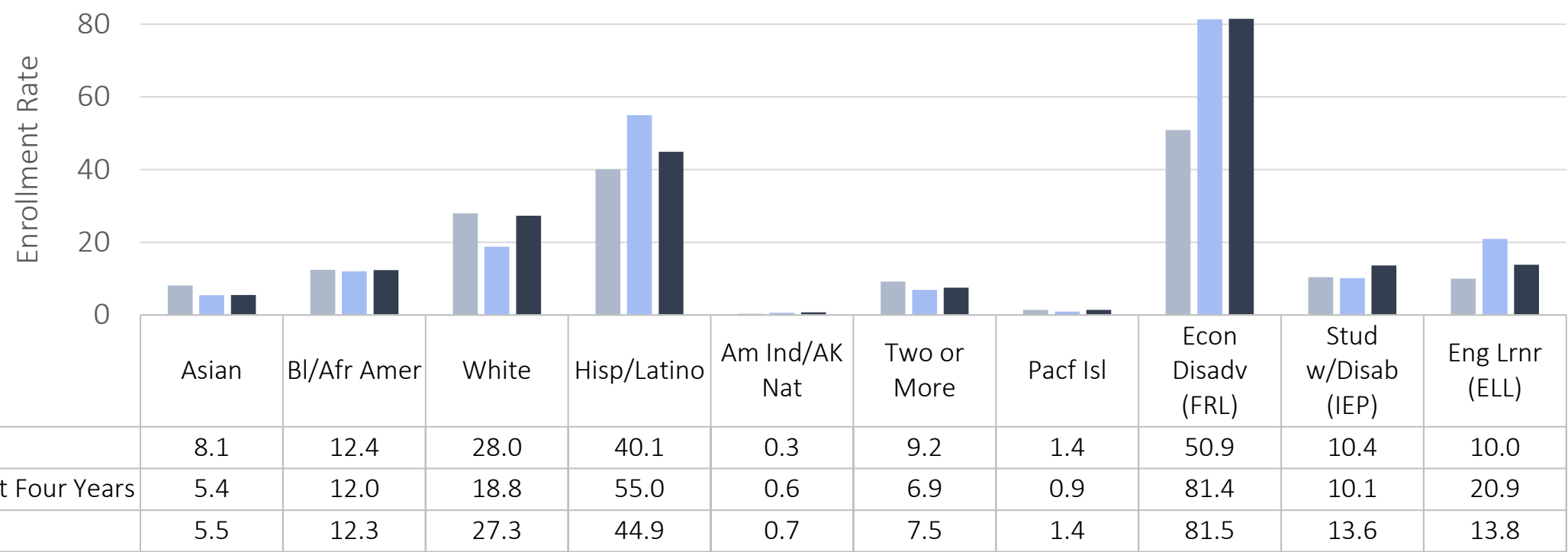
Enrollment: SPCSA Student Groups Versus State



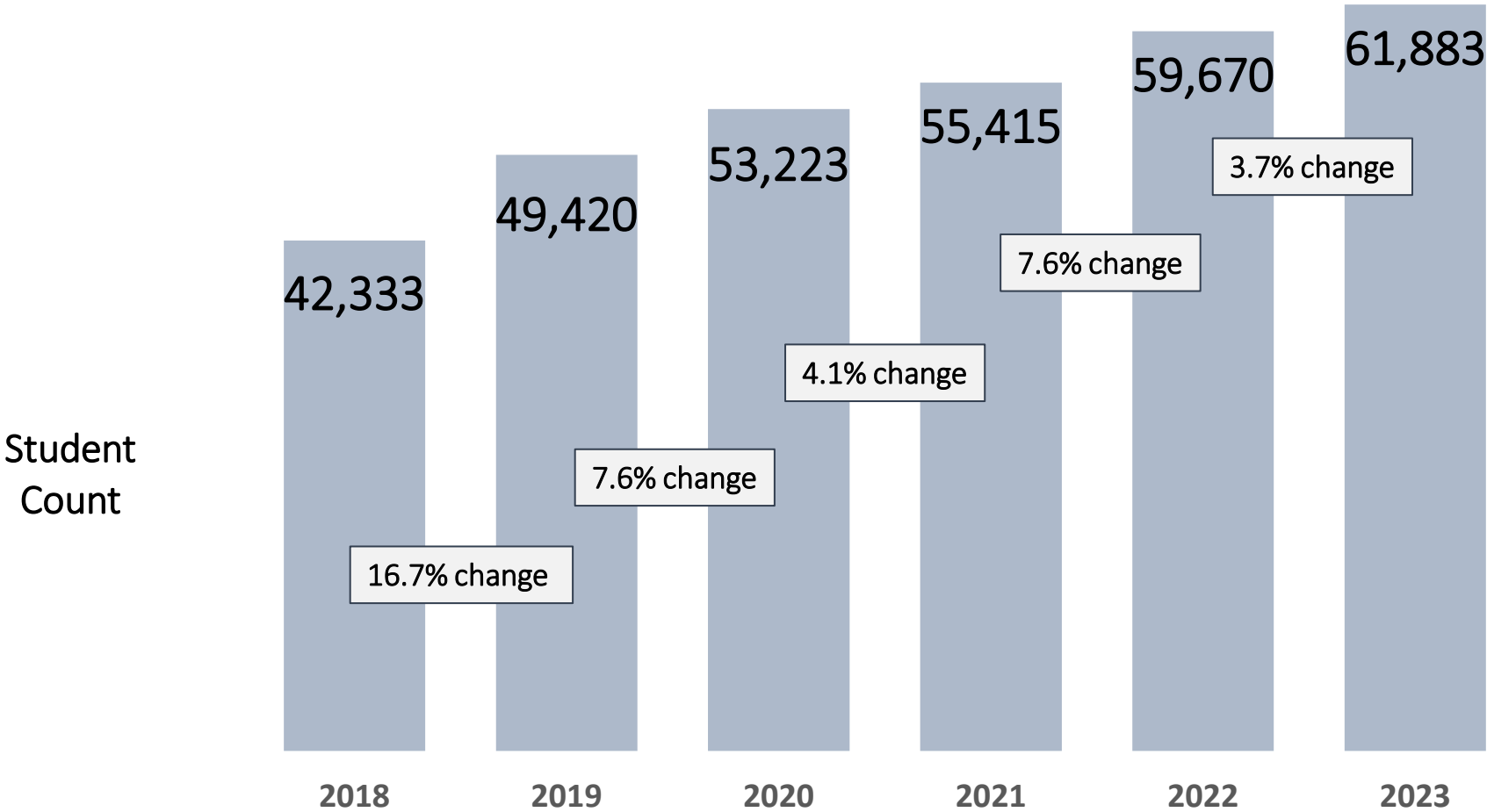
Enrollment: Comparison of Demographics for New Schools Opened in School Year 22-23



Enrollment: Comparison of Demographics for New Schools Opened Last Four Years



- Opened 2020-21 SY: Amplus Academy Rainbow, Explore Academy, Mater Academy East, Nevada State High School Downtown Henderson, Nevada State High School Northwest, and Pinecrest Academy Northern Nevada
- Opened 2021-22 SY: CIVICA and TEACH LV.
- Opened 2022-23 SY: Battle Born Academy, Coral Academy of Science Las Vegas Cadence, Nevada State High School North Las Vegas, pilotED Cactus Park, Pinecrest Academy Virtual, Sage Collegiate, Strong Start Academy, and Young Women’s Leadership Academy.
- Opened 2023-24 SY: Eagle NV, Pinecrest Academy Springs, and Southern NV Trades HS.





Thank You!