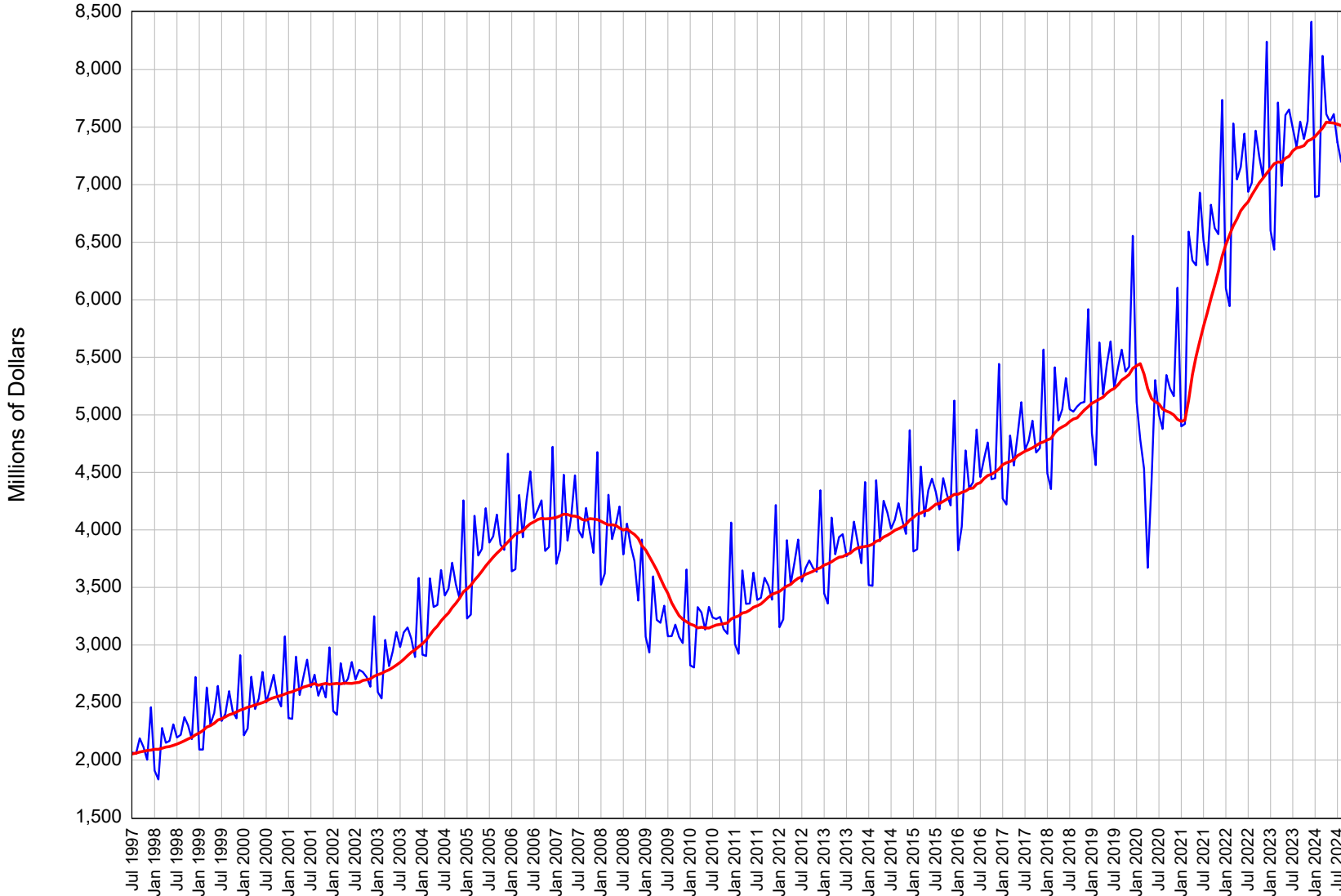


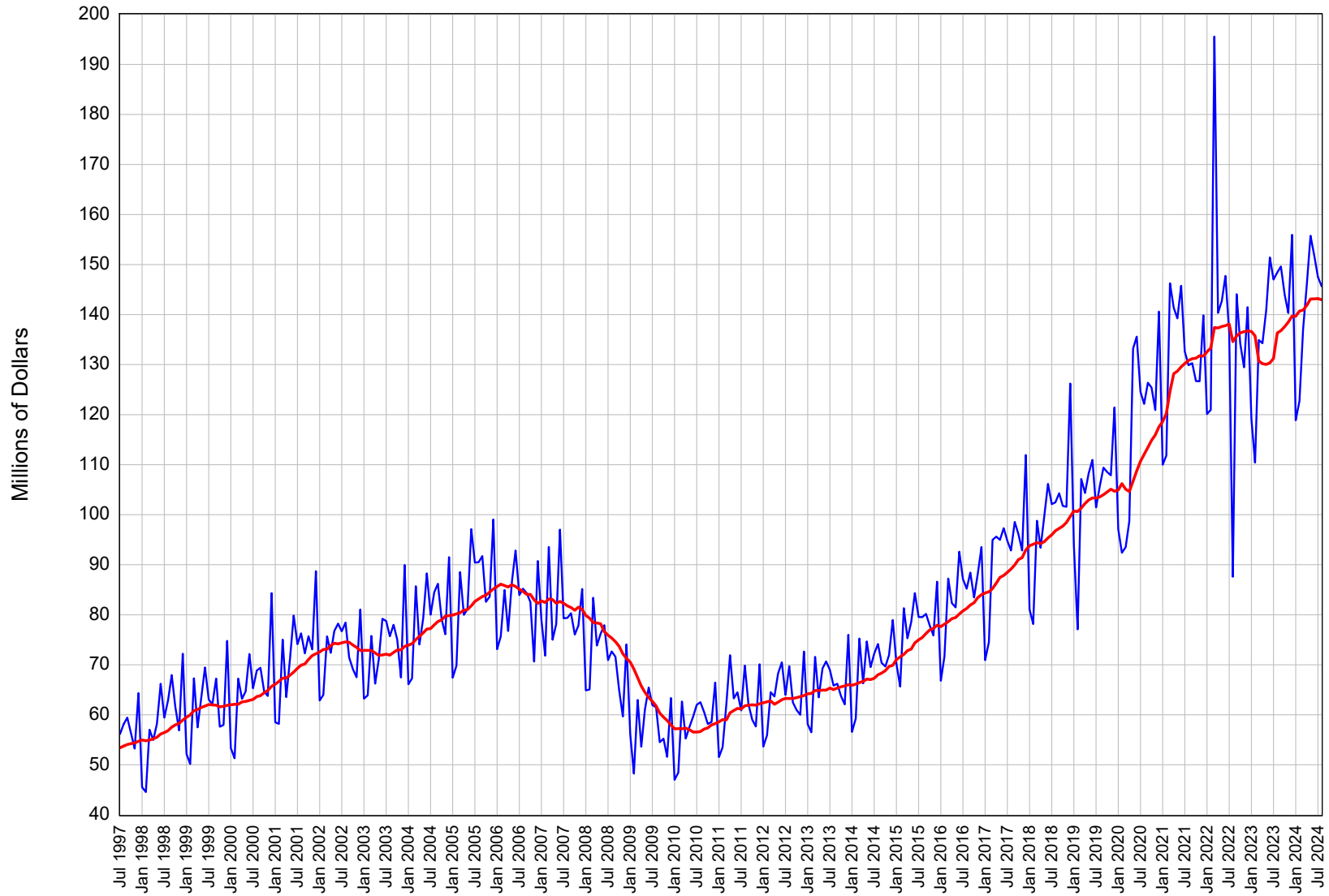
Statewide Taxable Sales: Monthly



Month: July 1997 to August 2024

— Taxable Sales — 12-month Moving Average

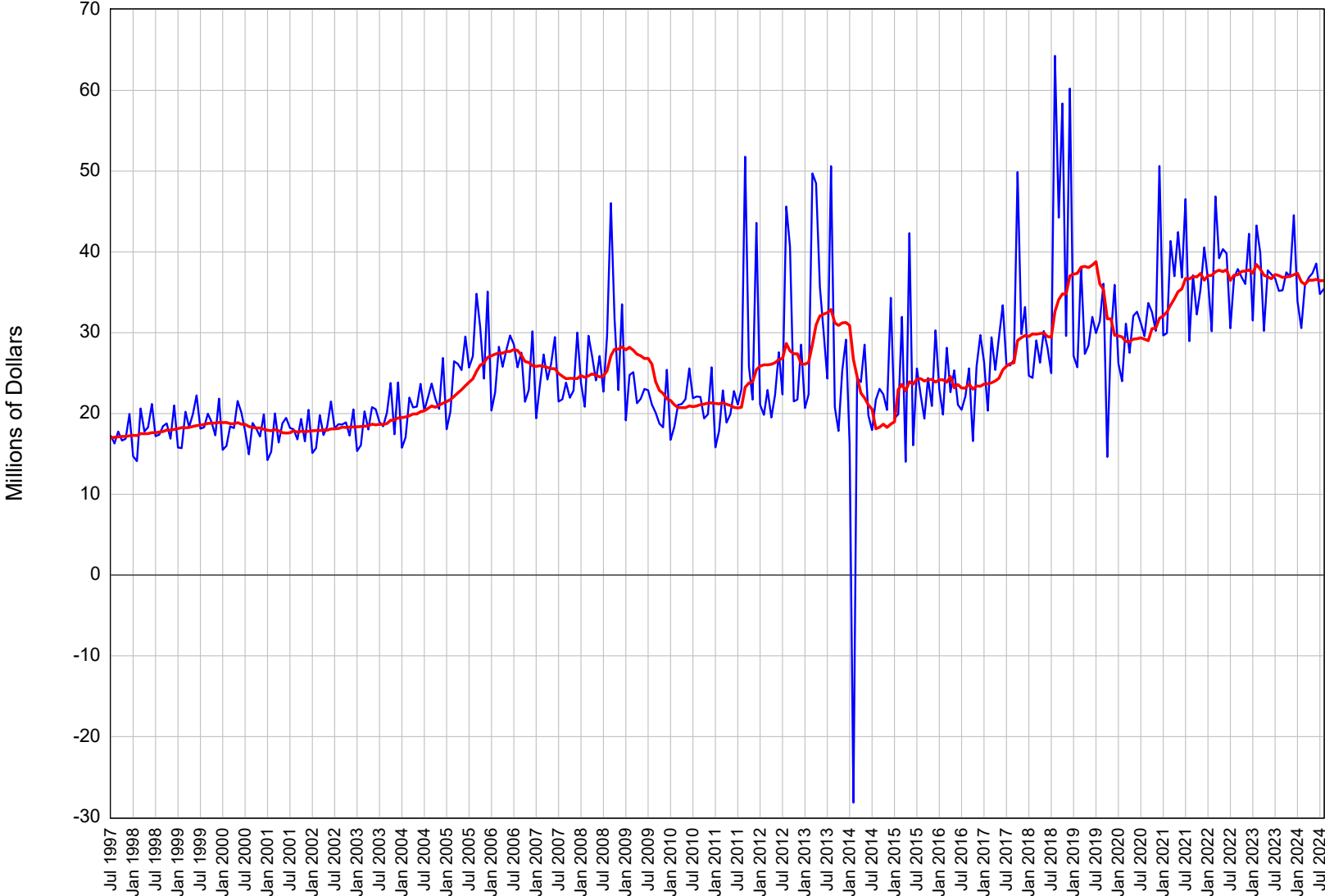
Carson City Taxable Sales: Monthly



Month: July 1997 to August 2024

— Taxable Sales — 12-month Moving Average

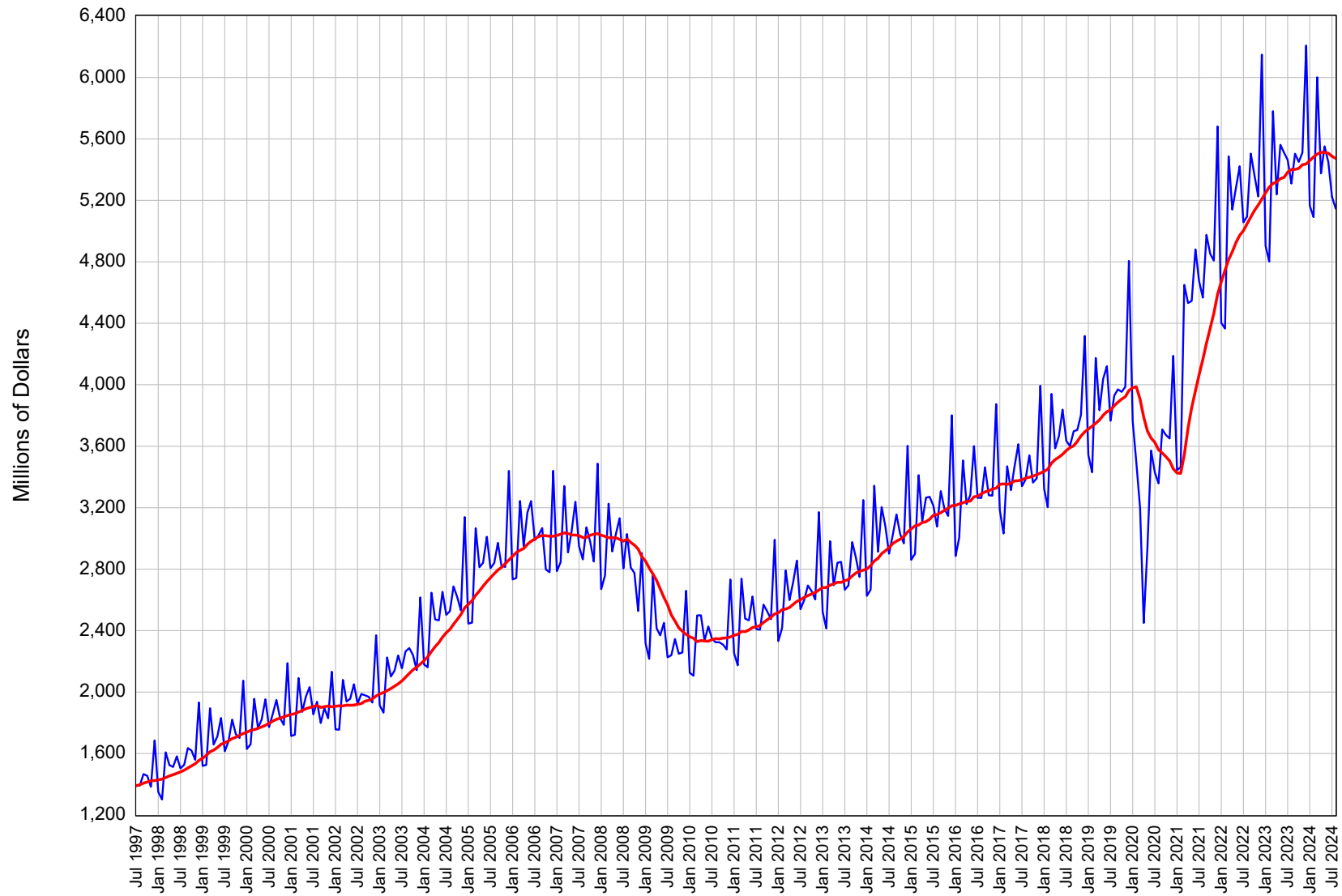
Churchill County Taxable Sales: Monthly



Month: July 1997 to August 2024

— Taxable Sales — 12-month Moving Average

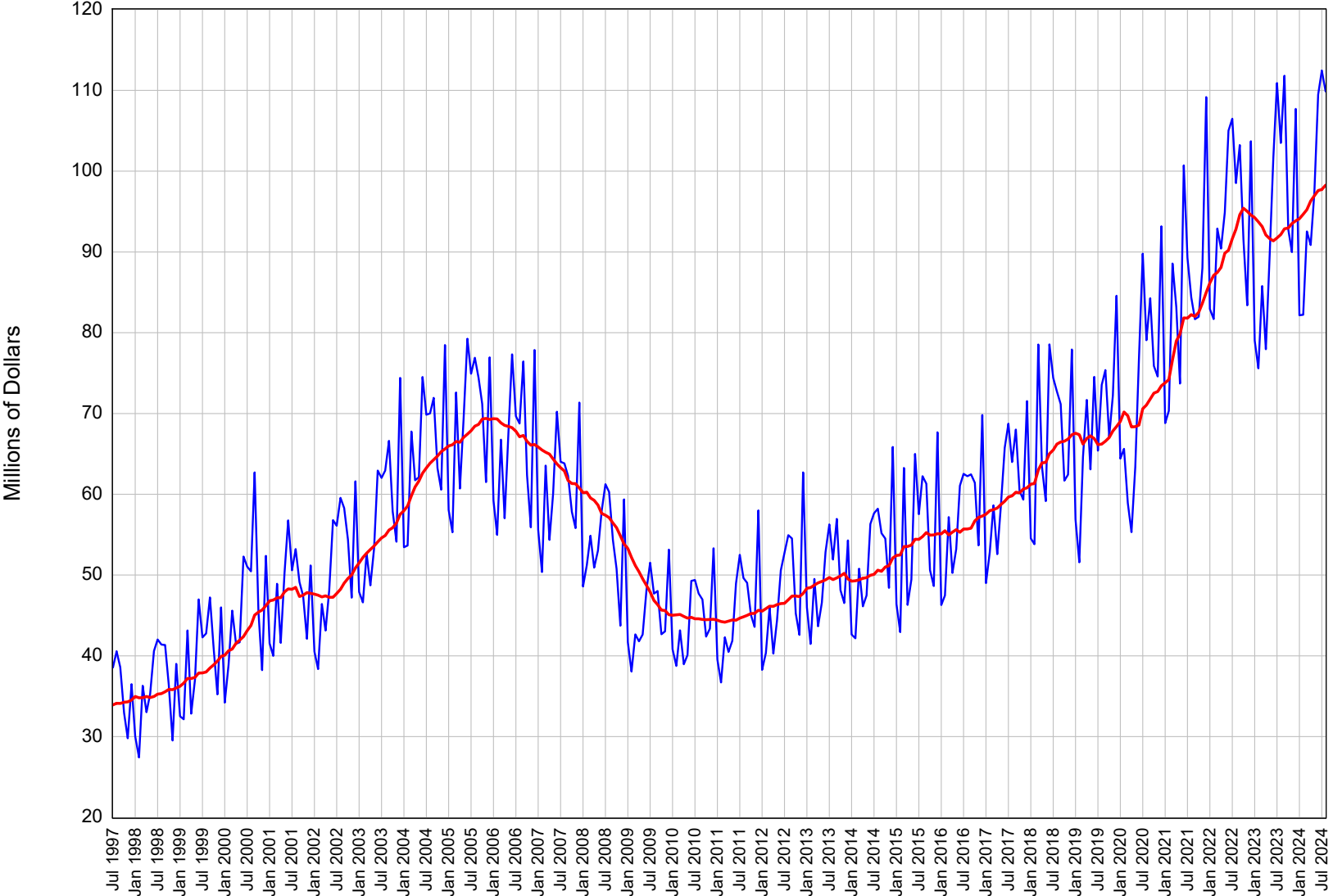
Clark County Taxable Sales: Monthly



Month: July 1997 to August 2024

— Taxable Sales — 12-month Moving Average

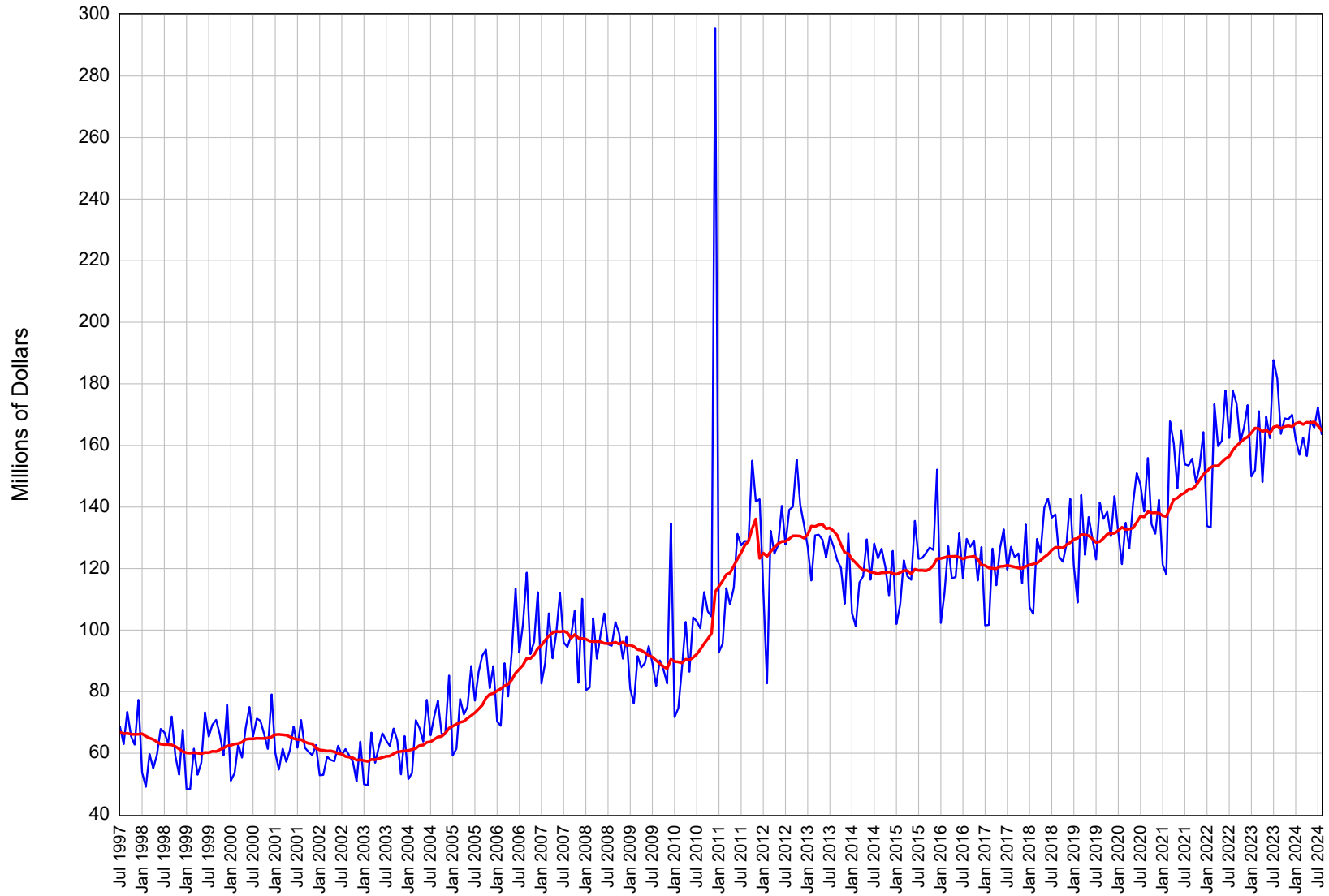
Douglas County Taxable Sales: Monthly



Month: July 1997 to August 2024

— Taxable Sales — 12-month Moving Average

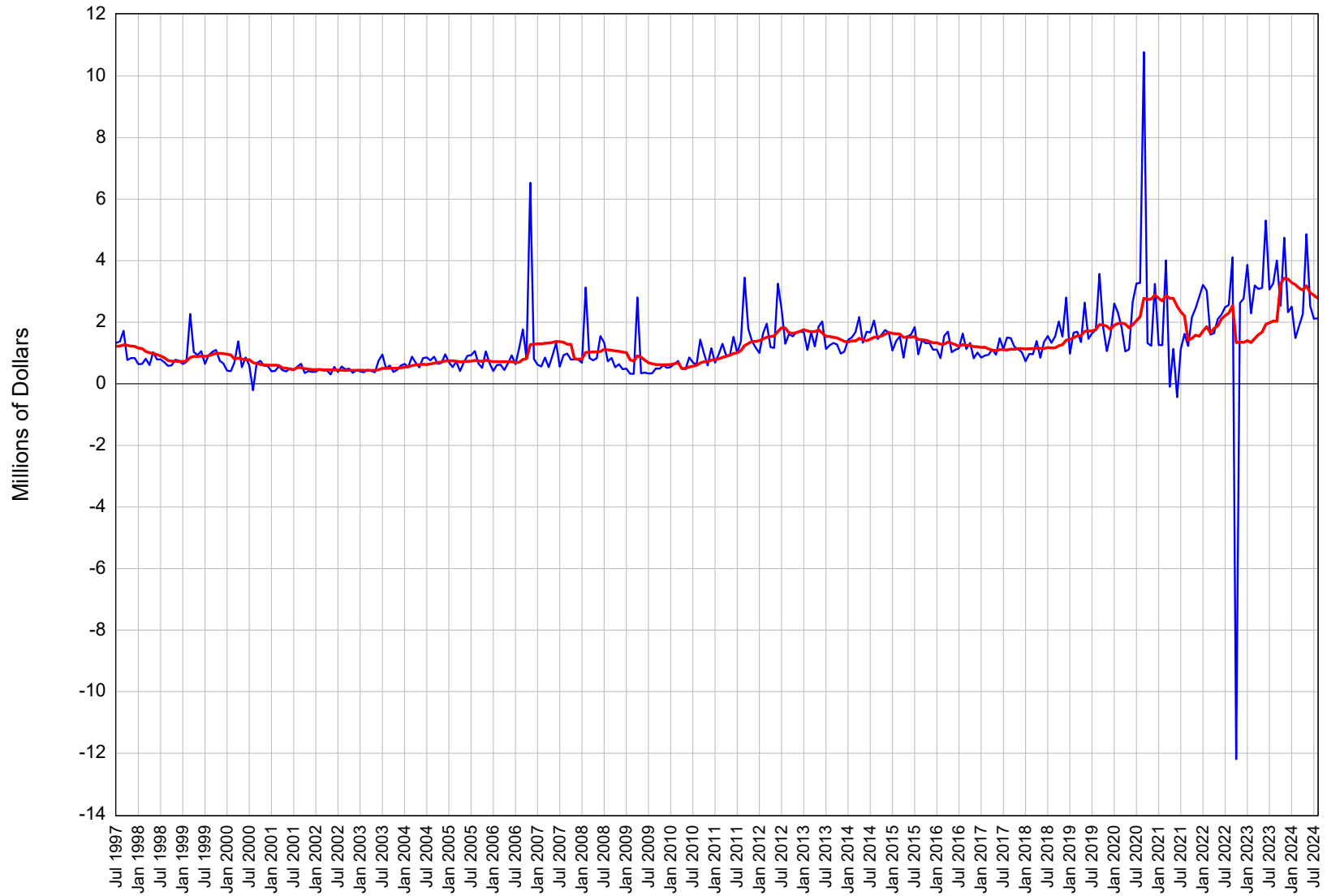
Elko County Taxable Sales: Monthly



Month: July 1997 to August 2024

— Taxable Sales — 12-month Moving Average

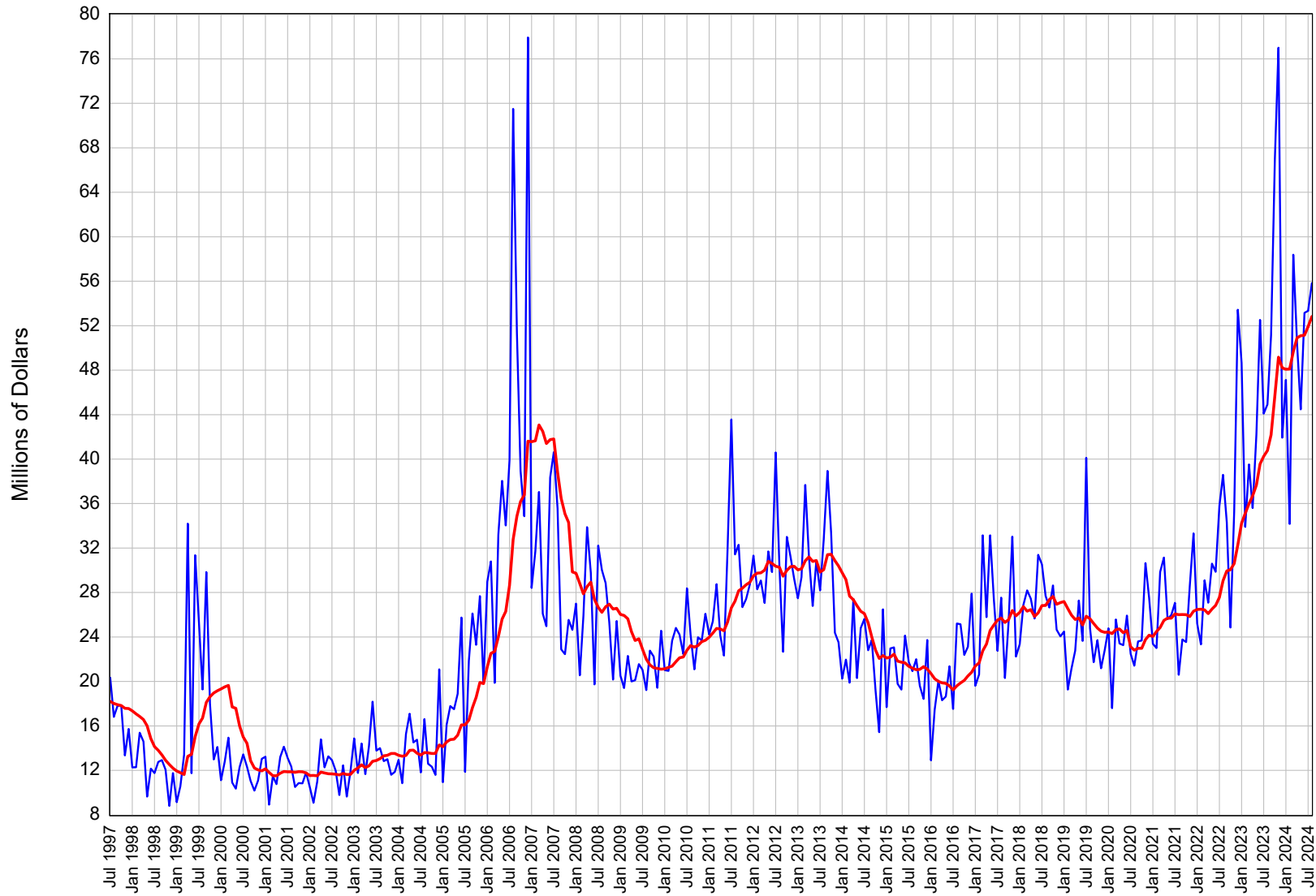
Esmeralda County Taxable Sales: Monthly



Month: July 1997 to August 2024

— Taxable Sales — 12-month Moving Average

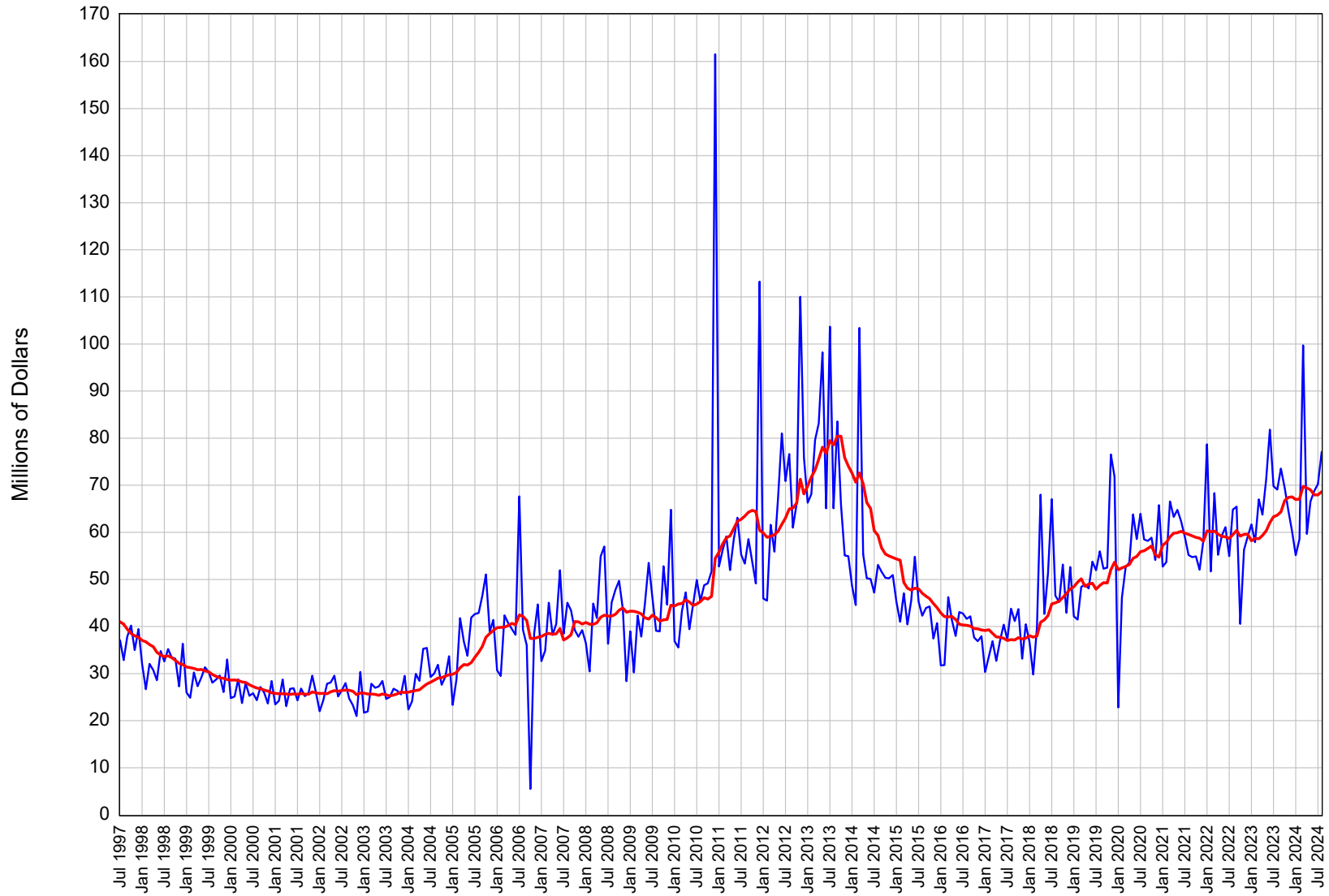
Eureka County Taxable Sales: Monthly



Month: July 1997 to August 2024

— Taxable Sales — 12-month Moving Average

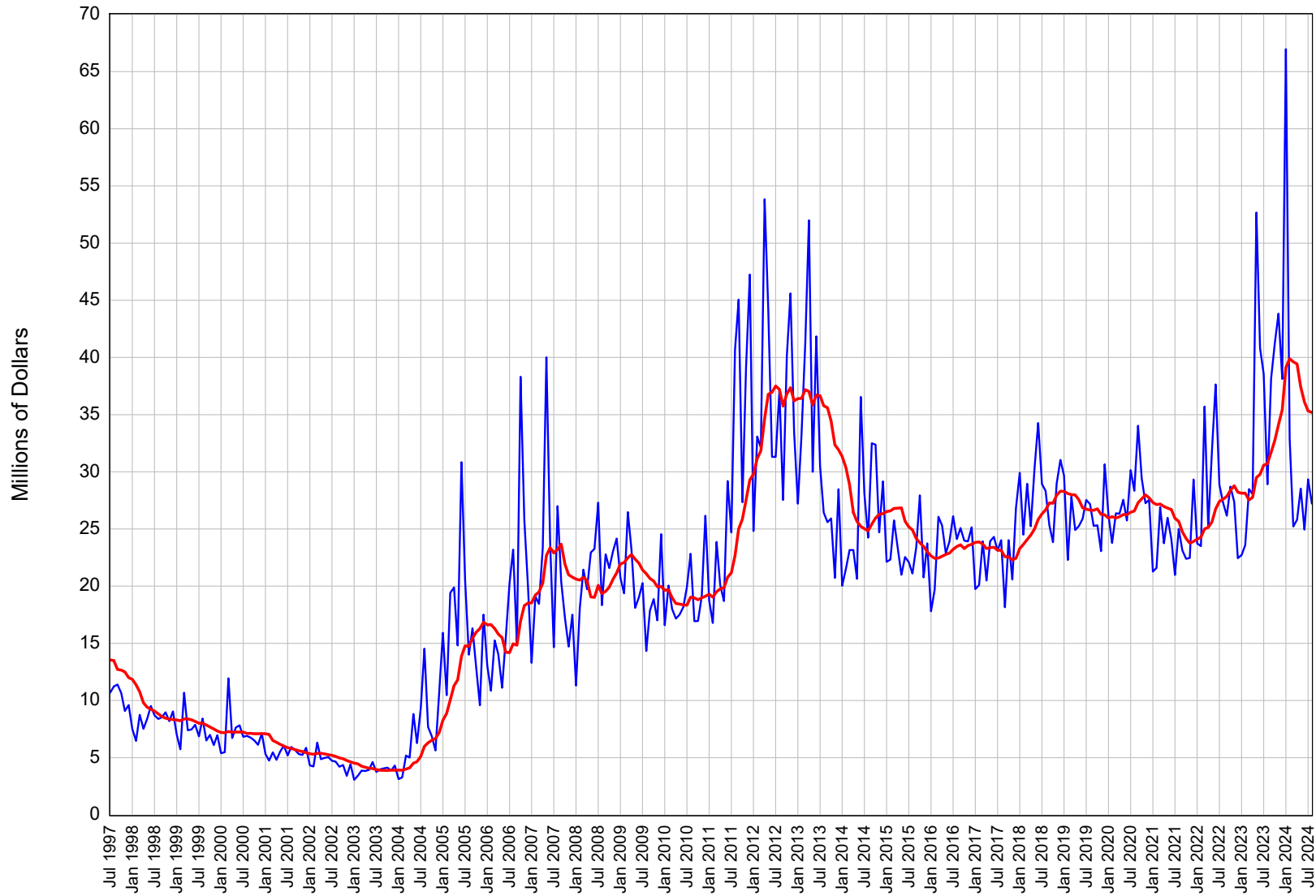
Humboldt County Taxable Sales: Monthly



Month: July 1997 to August 2024

— Taxable Sales — 12-month Moving Average

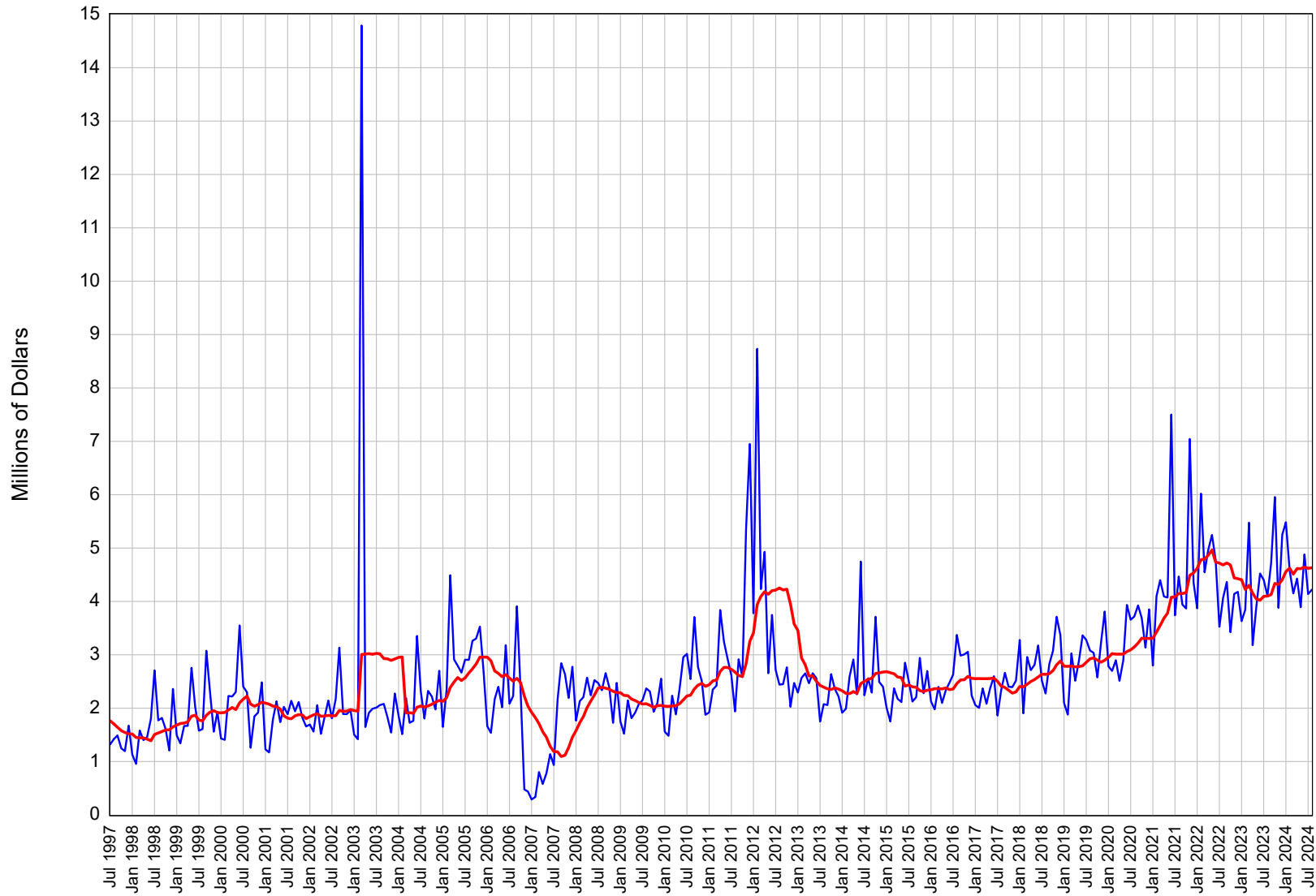
Lander County Taxable Sales: Monthly



Month: July 1997 to August 2024

— Taxable Sales — 12-month Moving Average

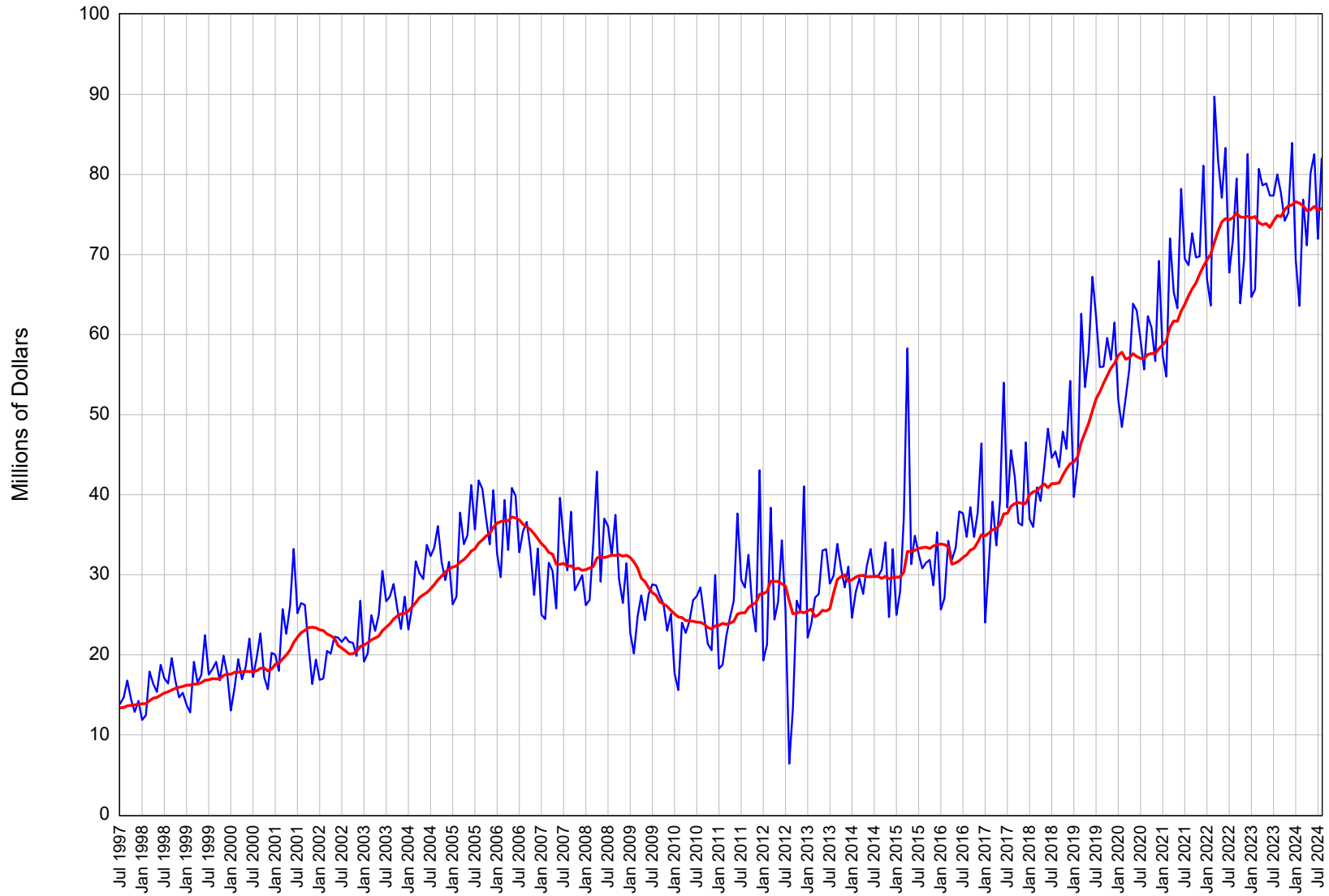
Lincoln County Taxable Sales: Monthly



Month: July 1997 to August 2024

— Taxable Sales — 12-month Moving Average

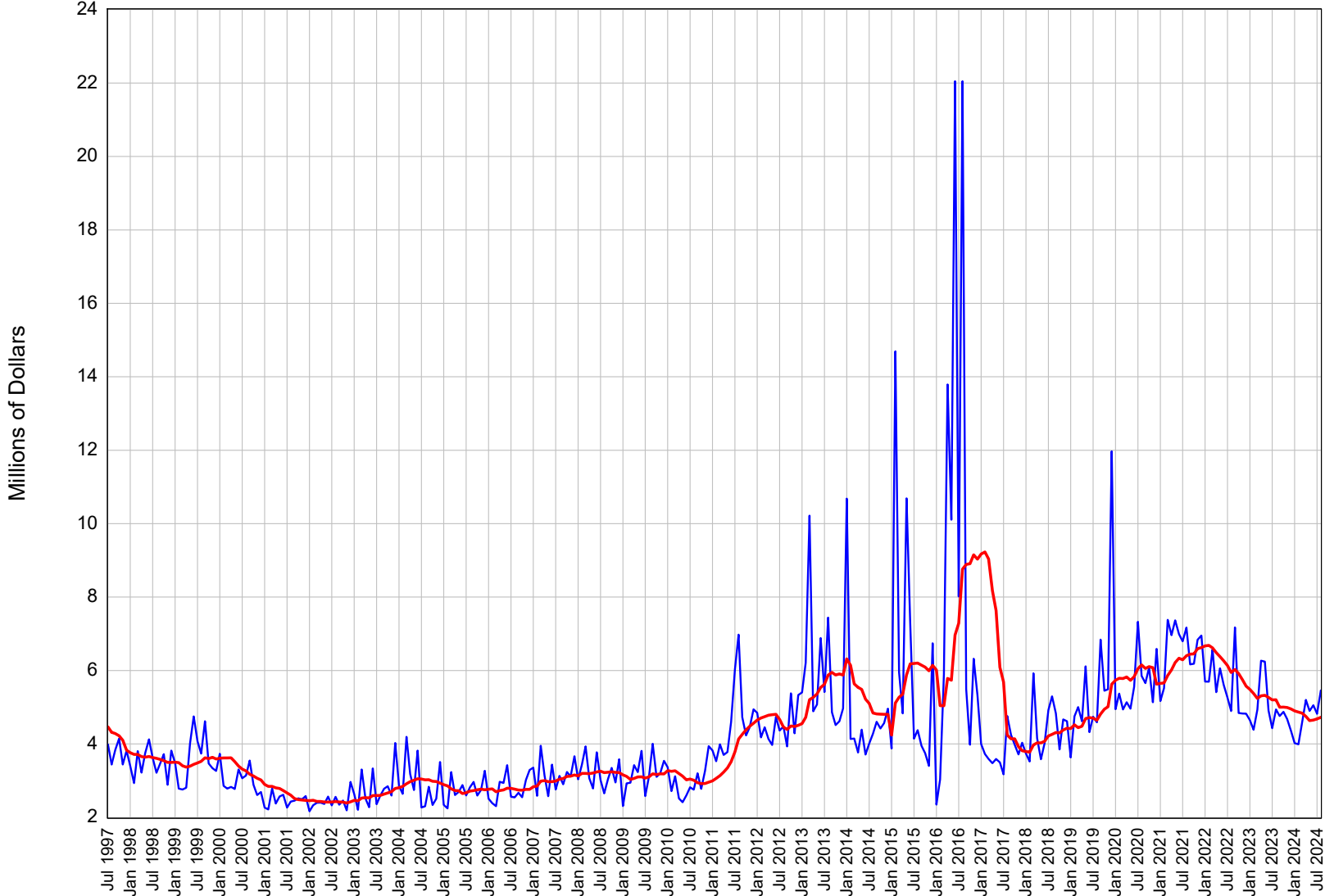
Lyon County Taxable Sales: Monthly



Month: July 1997 to August 2024

— Taxable Sales — 12-month Moving Average

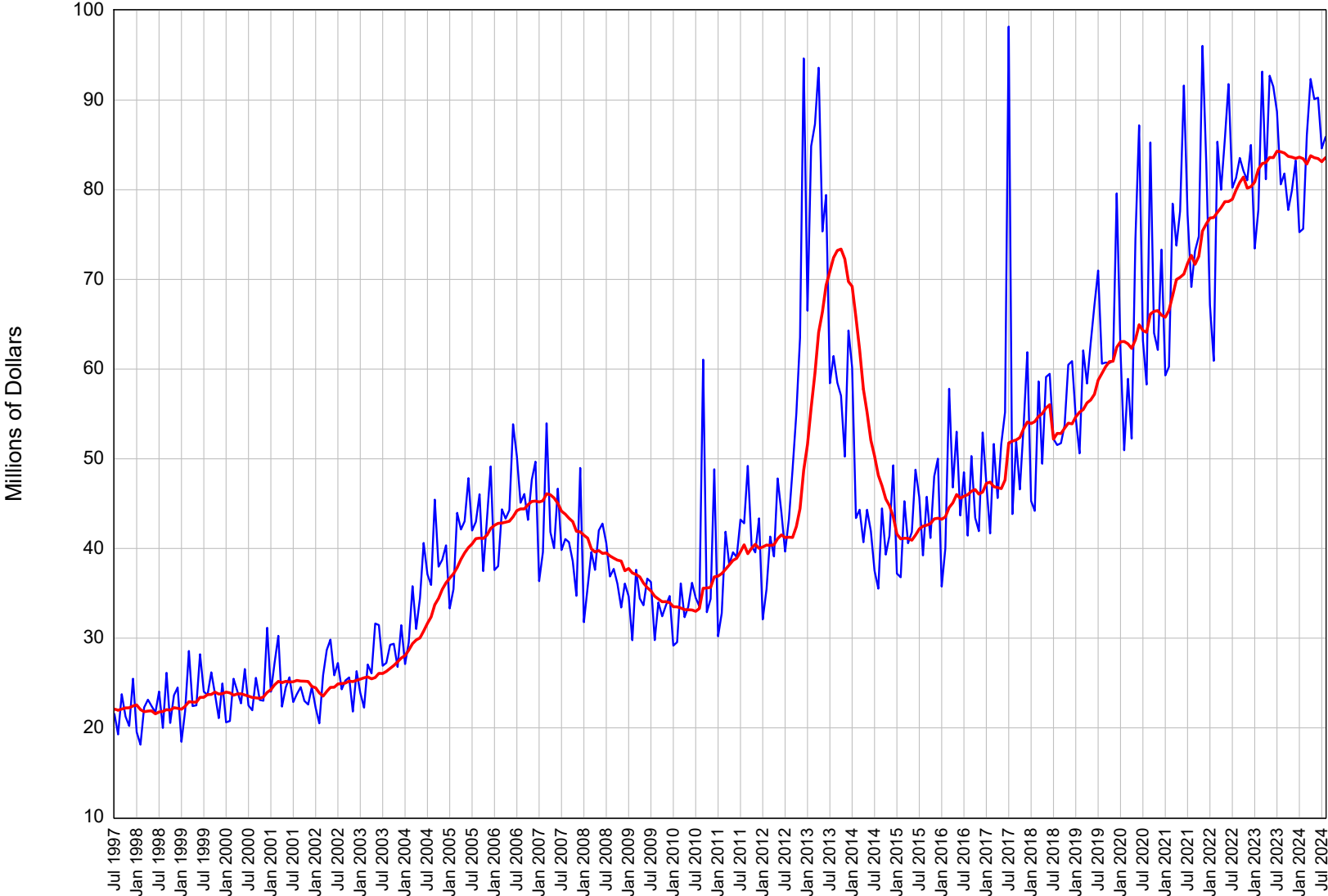
Mineral County Taxable Sales: Monthly



Month: July 1997 to August 2024

— Taxable Sales — 12-month Moving Average

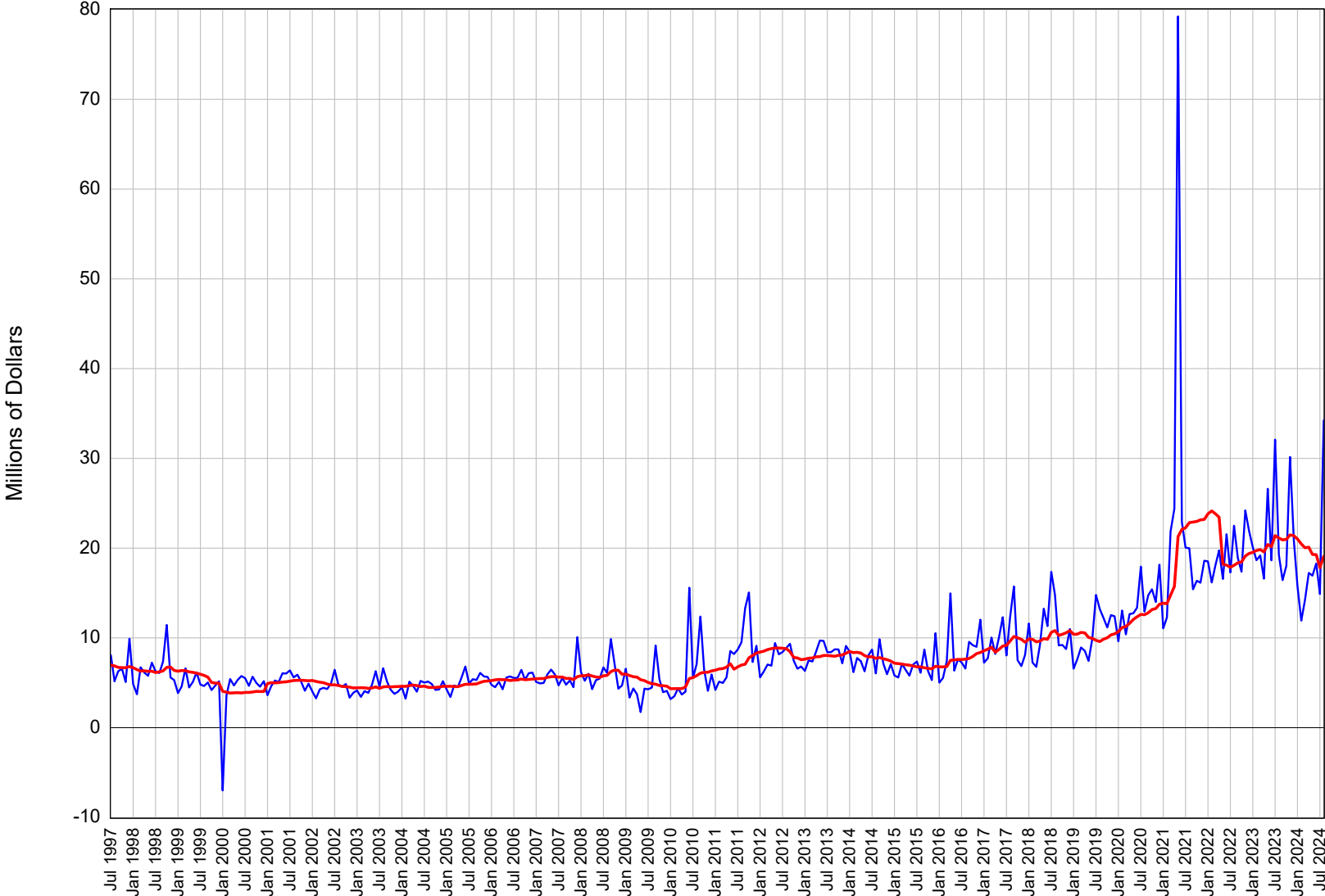
Nye County Taxable Sales: Monthly



Month: July 1997 to August 2024

— Taxable Sales — 12-month Moving Average

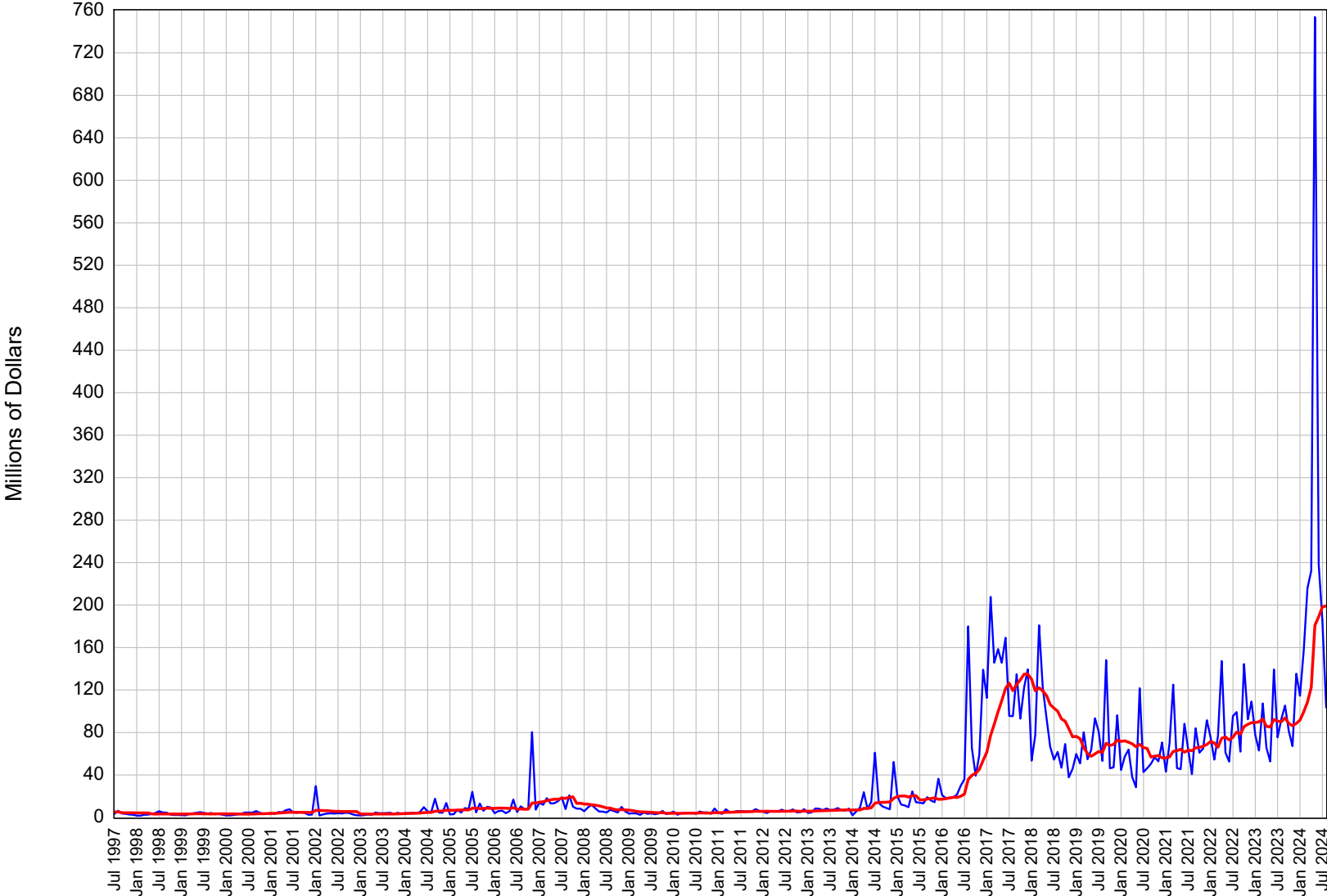
Pershing County Taxable Sales: Monthly



Month: July 1997 to August 2024

— Taxable Sales — 12-month Moving Average

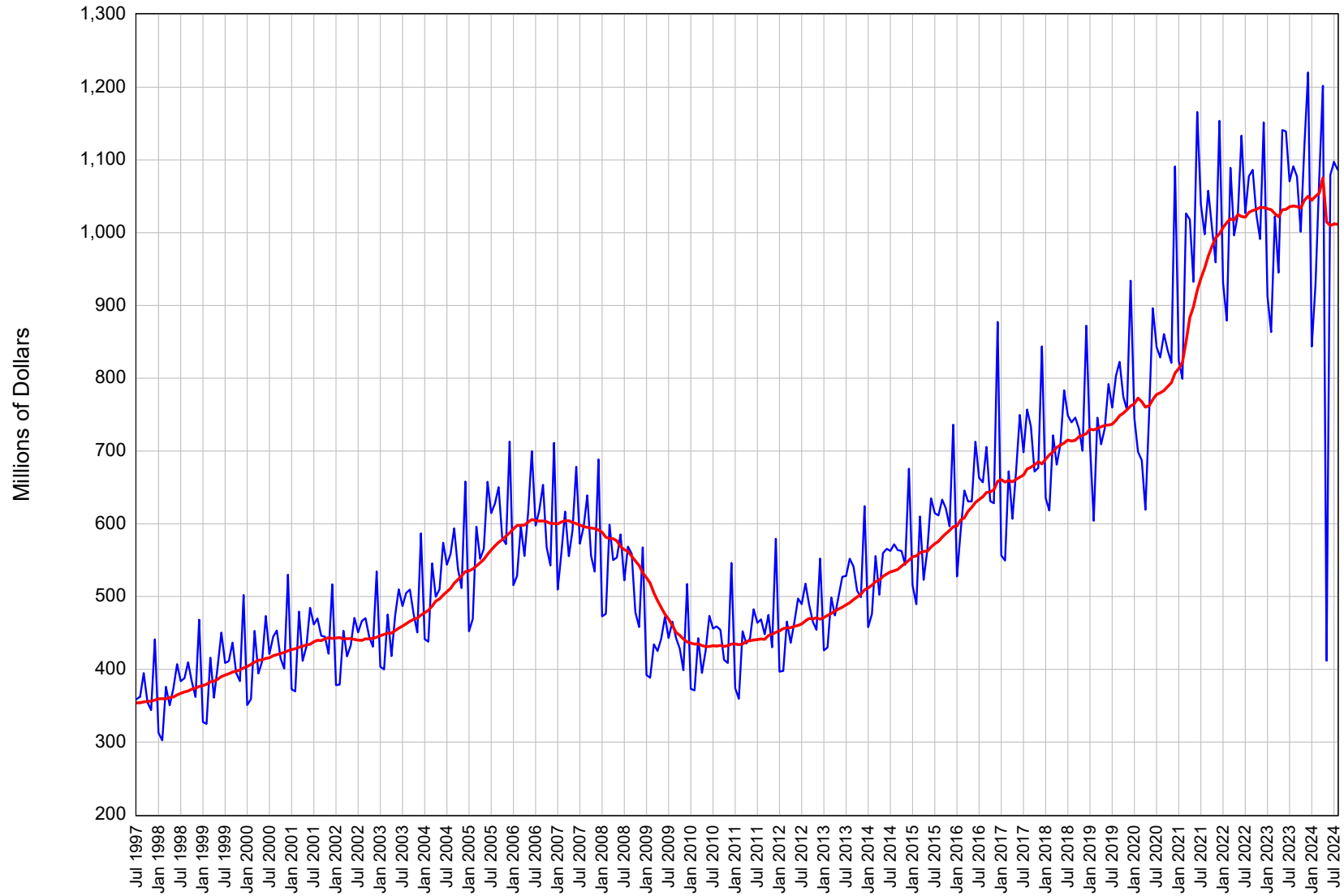
Storey County Taxable Sales: Monthly



Month: July 1997 to August 2024

— Taxable Sales — 12-month Moving Average

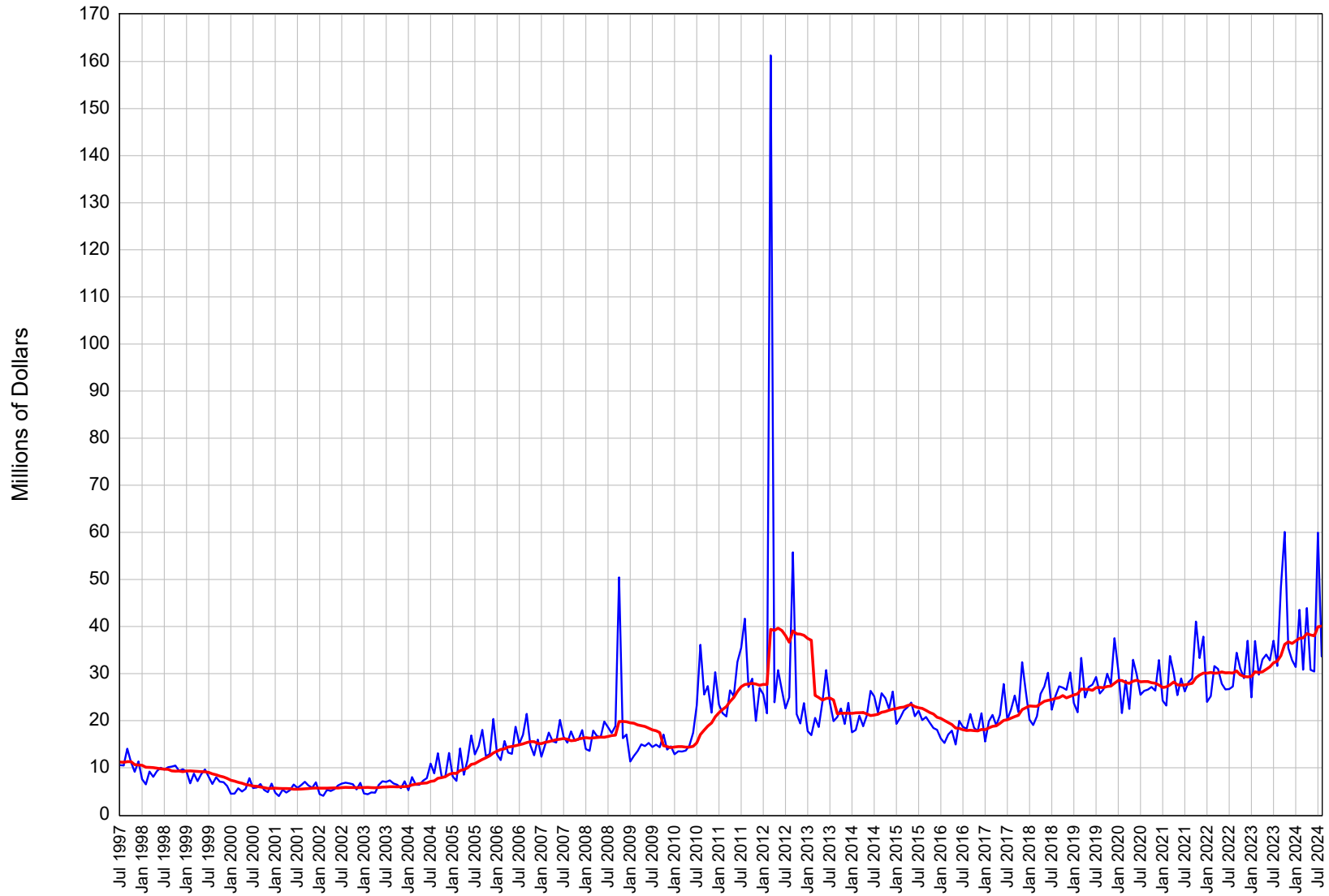
Washoe County Taxable Sales: Monthly



Month: July 1997 to August 2024

— Taxable Sales — 12-month Moving Average

White Pine County Taxable Sales: Monthly



Month: July 1997 to August 2024

— Taxable Sales — 12-month Moving Average