

CHART 1 - Clark County
Taxable Sales for Food Service & Drinking Places
 Monthly: June 2006 - August 2024

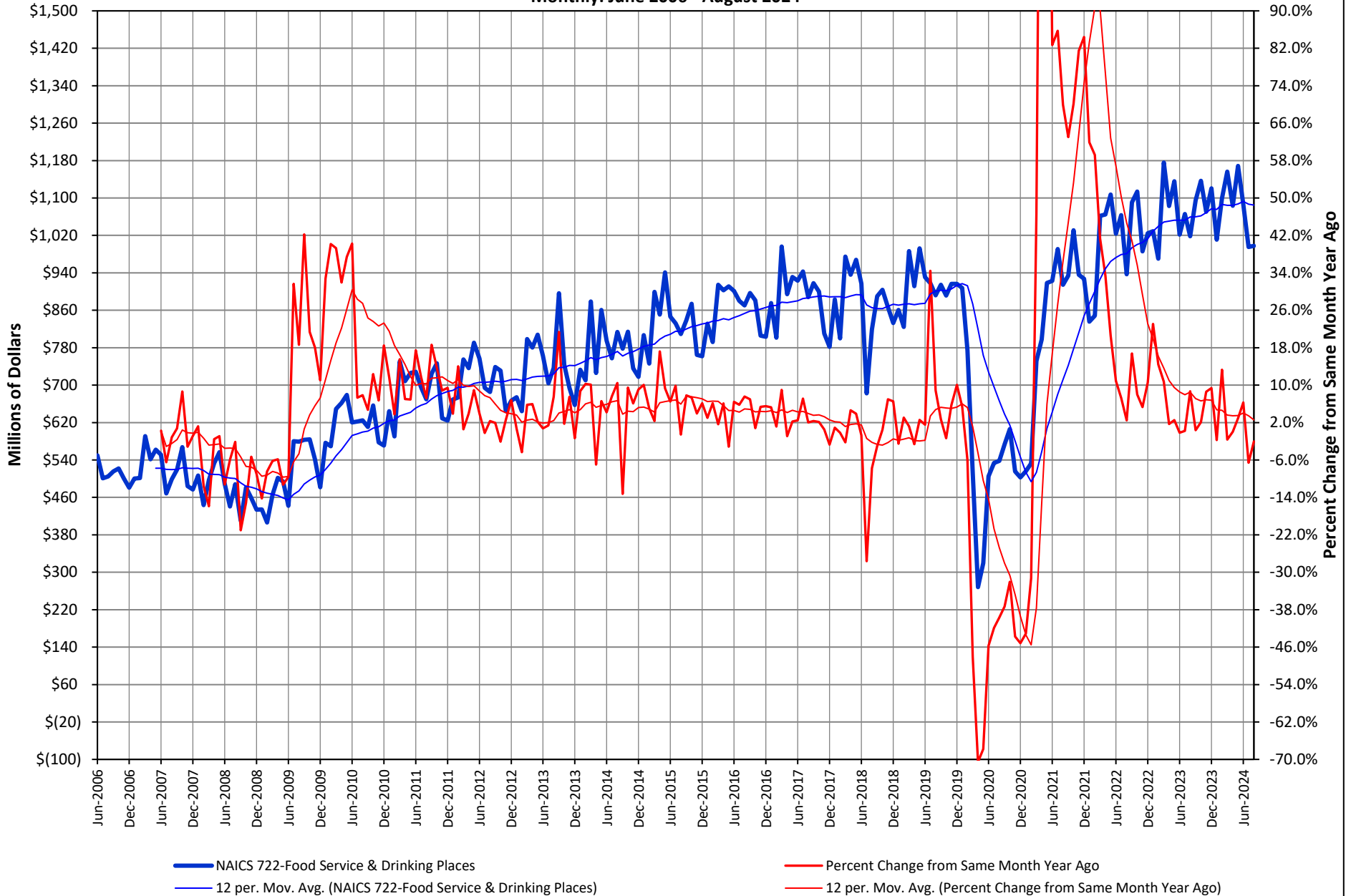


CHART 2 - Clark County
Taxable Sales for Motor Vehicle & Parts Dealers
 Monthly: June 2006 - August 2024

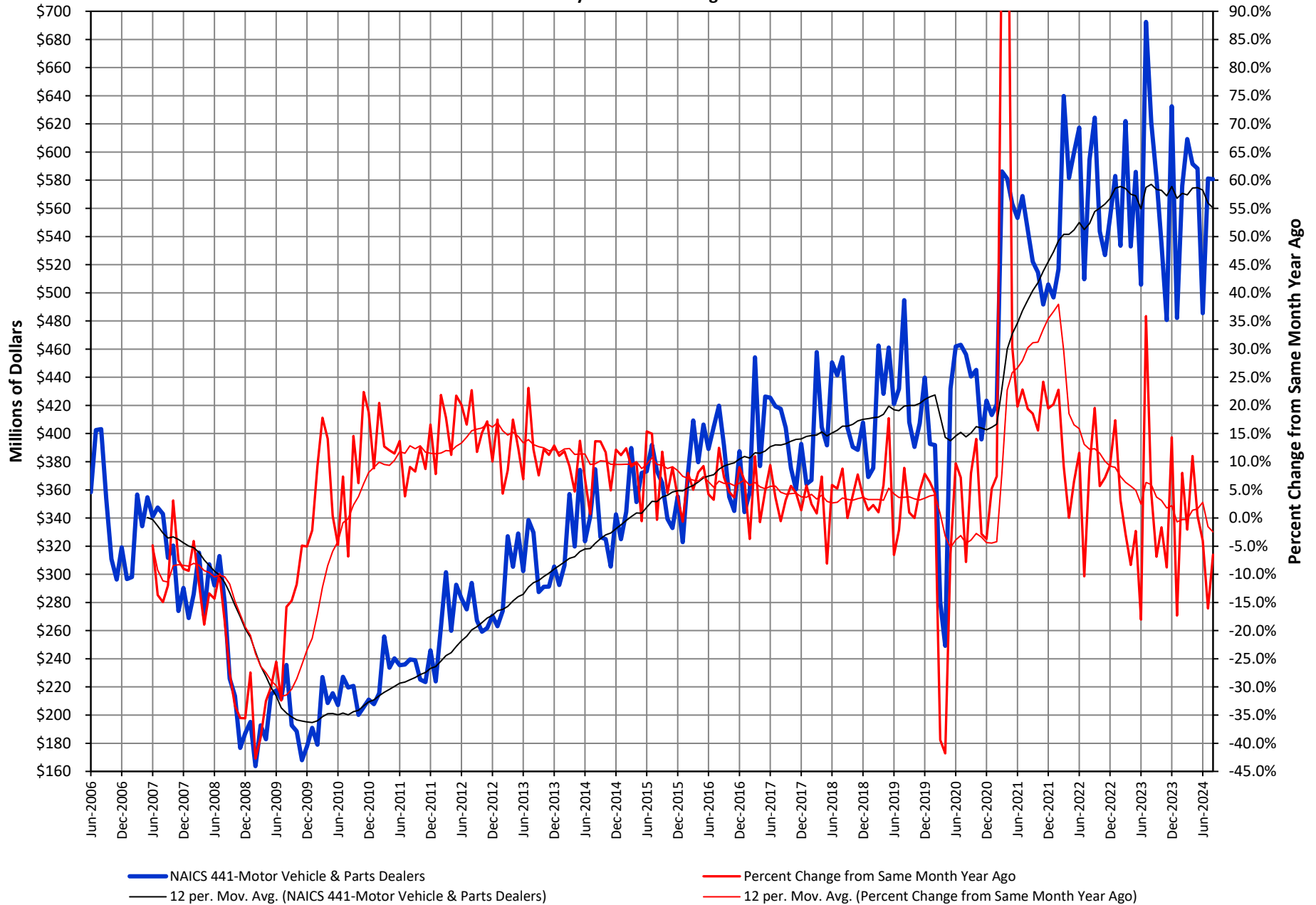


CHART 3 - Clark County
Taxable Sales for General Merchandise Stores
 Monthly: June 2006 - August 2024

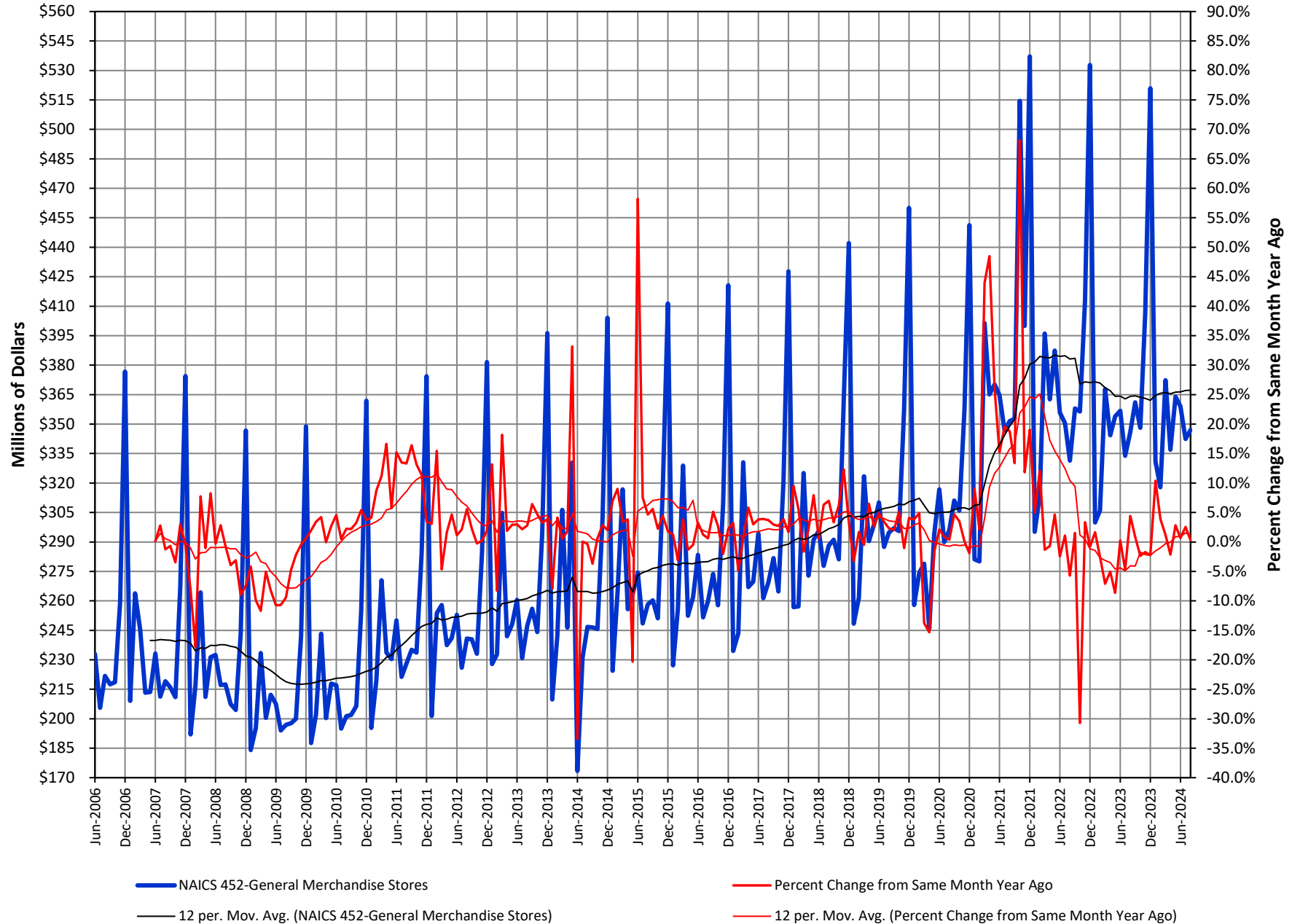


CHART 4 - Clark County
Taxable Sales for Clothing & Clothing Accessories
Monthly: June 2006 - August 2024

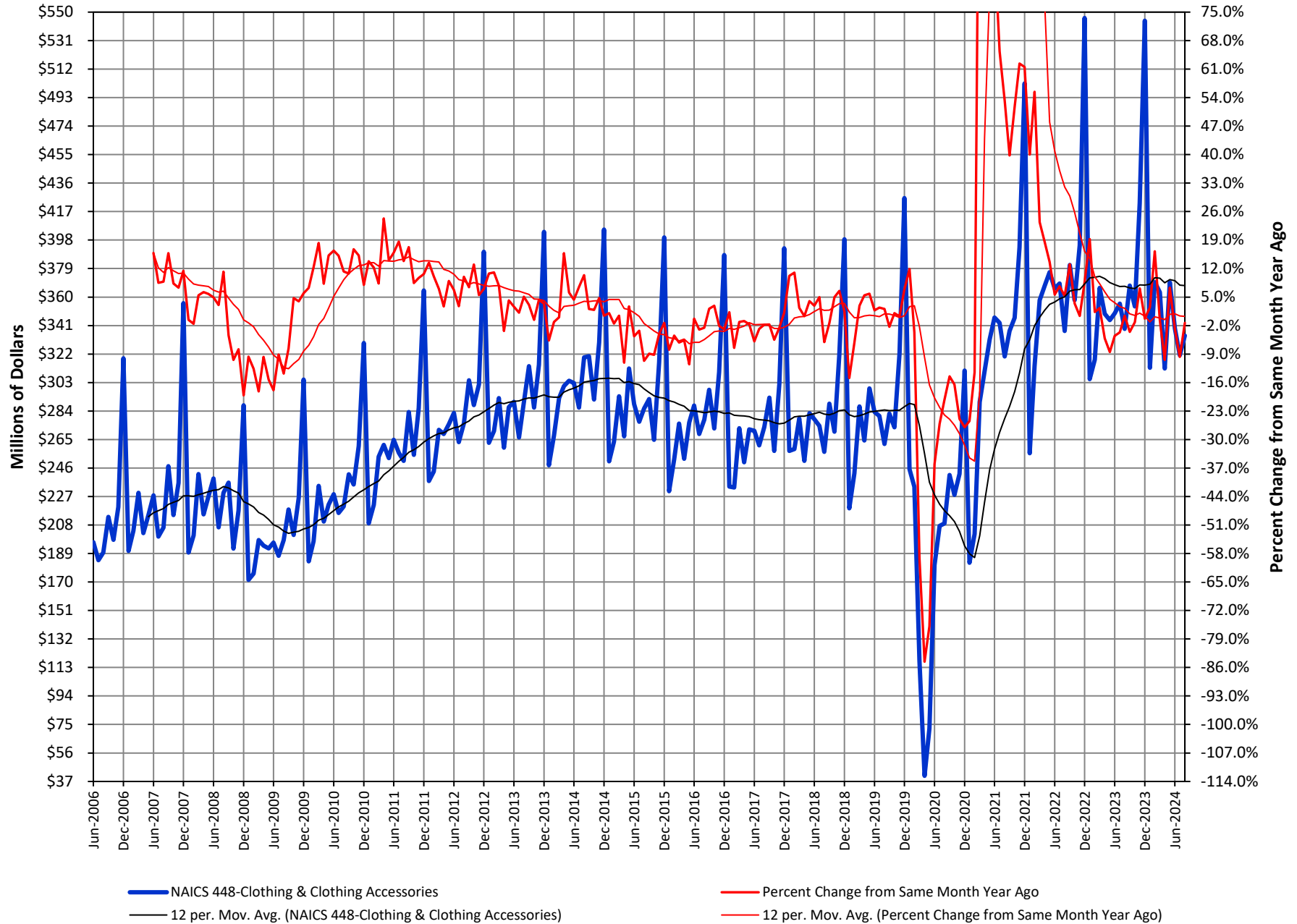
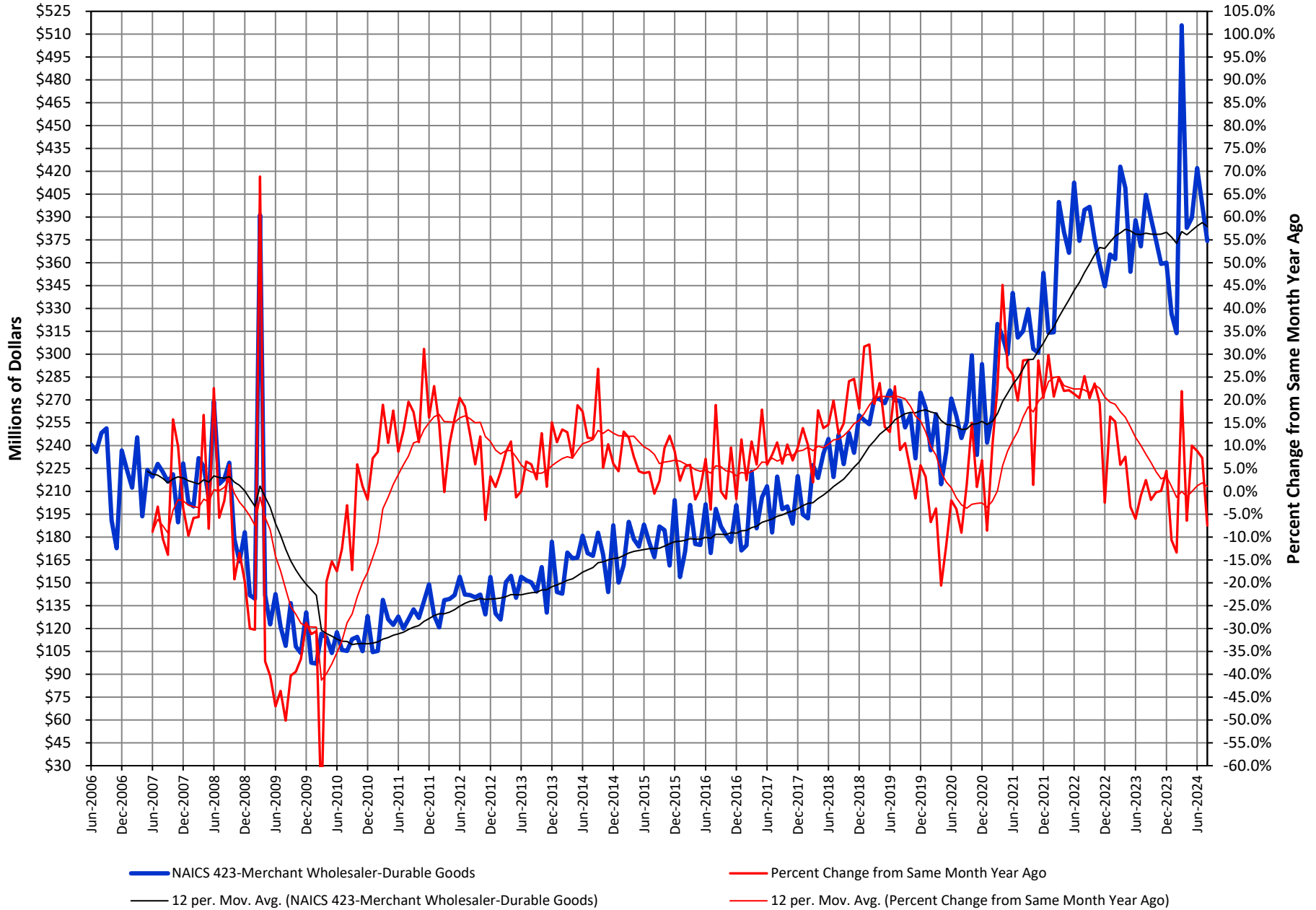
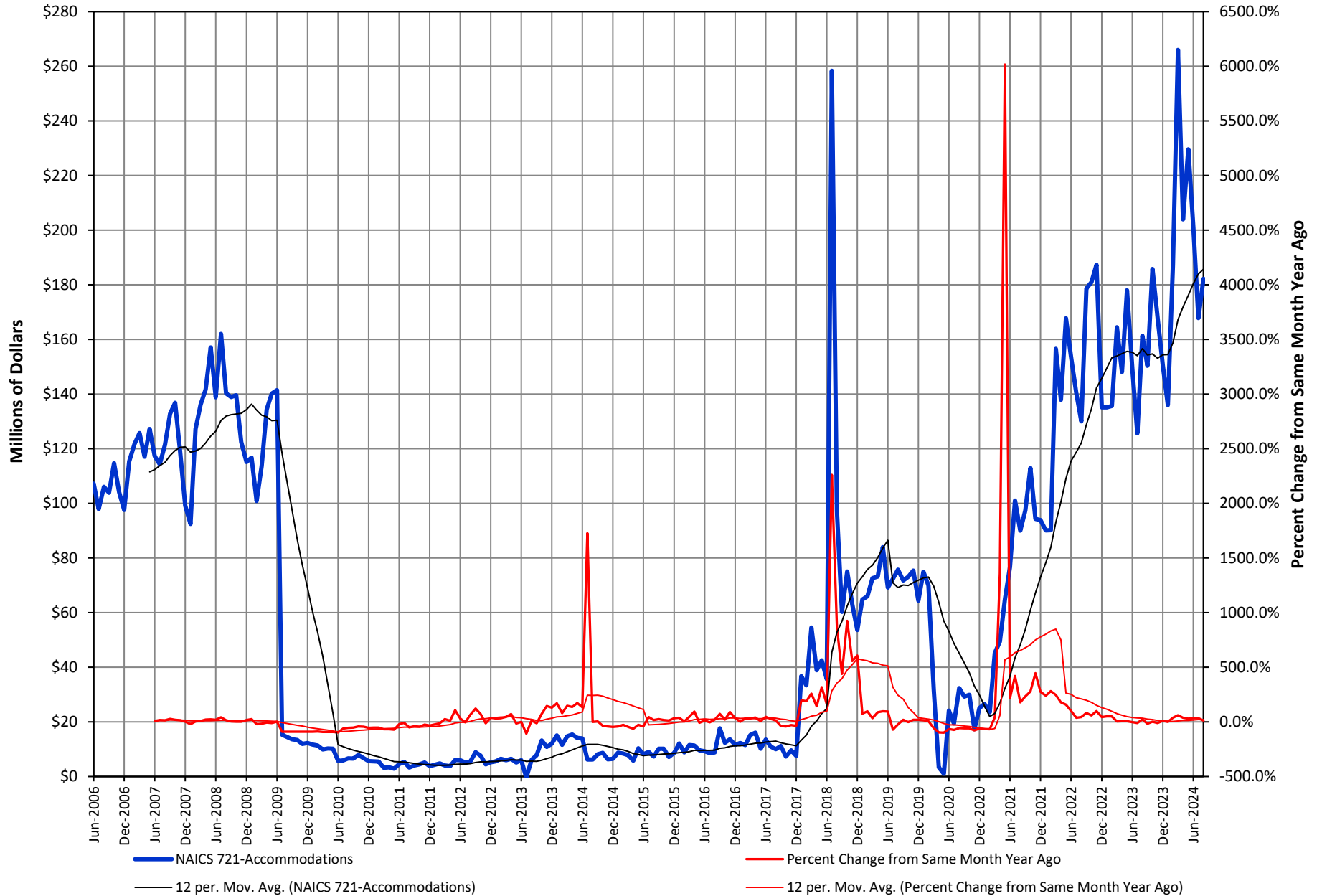


CHART 5 - Clark County
Taxable Sales for Merchant Wholesaler-Durable Goods
 Monthly: June 2006 - August 2024



**CHART 6 - Clark County
Taxable Sales for Accommodations
Monthly: June 2006 - August 2024**



**CHART 7 - Clark County
Taxable Sales for Food & Beverage Stores
Monthly: June 2006 - August 2024**

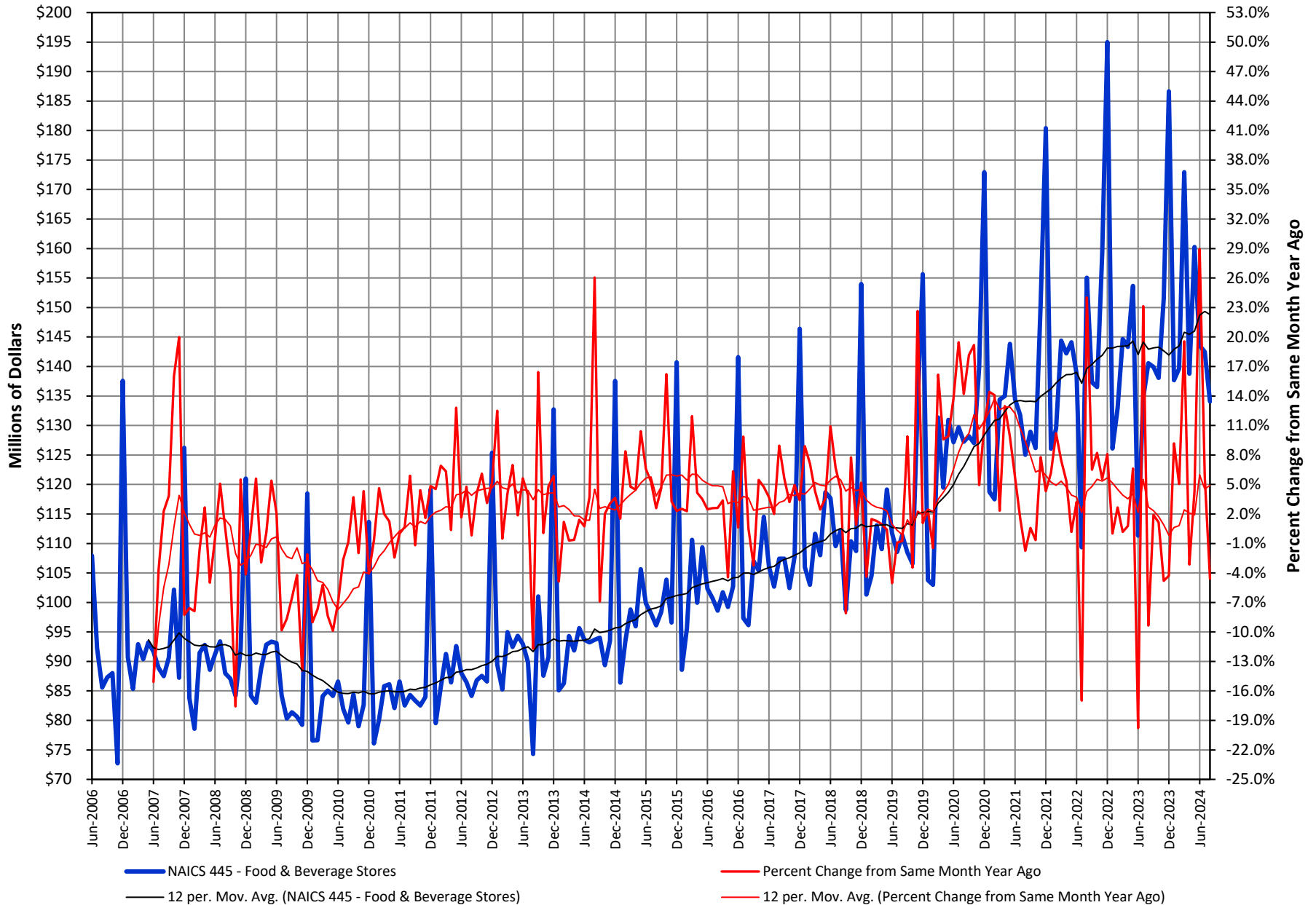


CHART 8 - Clark County
Taxable Sales for Building Materials & Garden Equipment/Supplies
 Monthly: June 2006 - August 2024

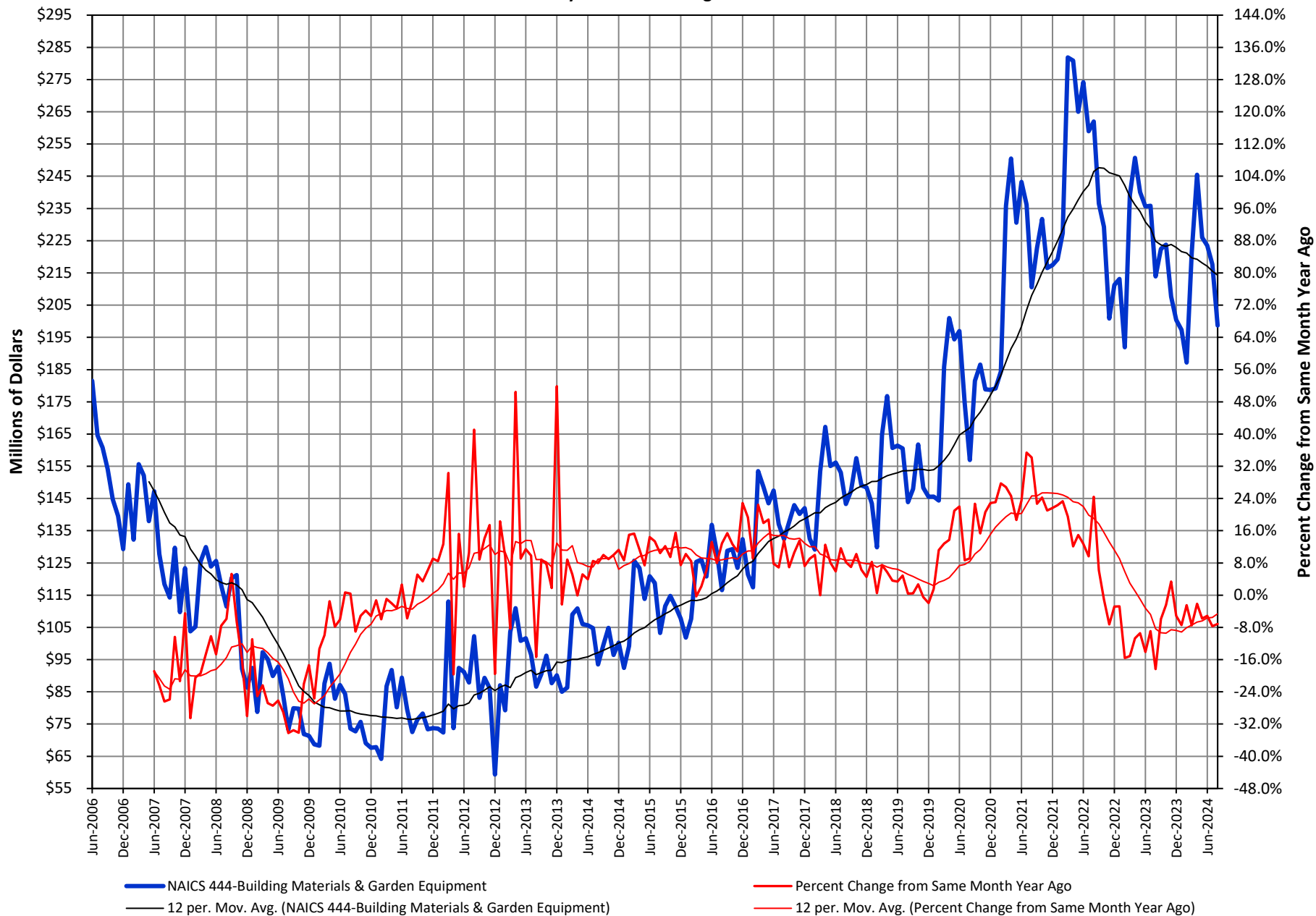
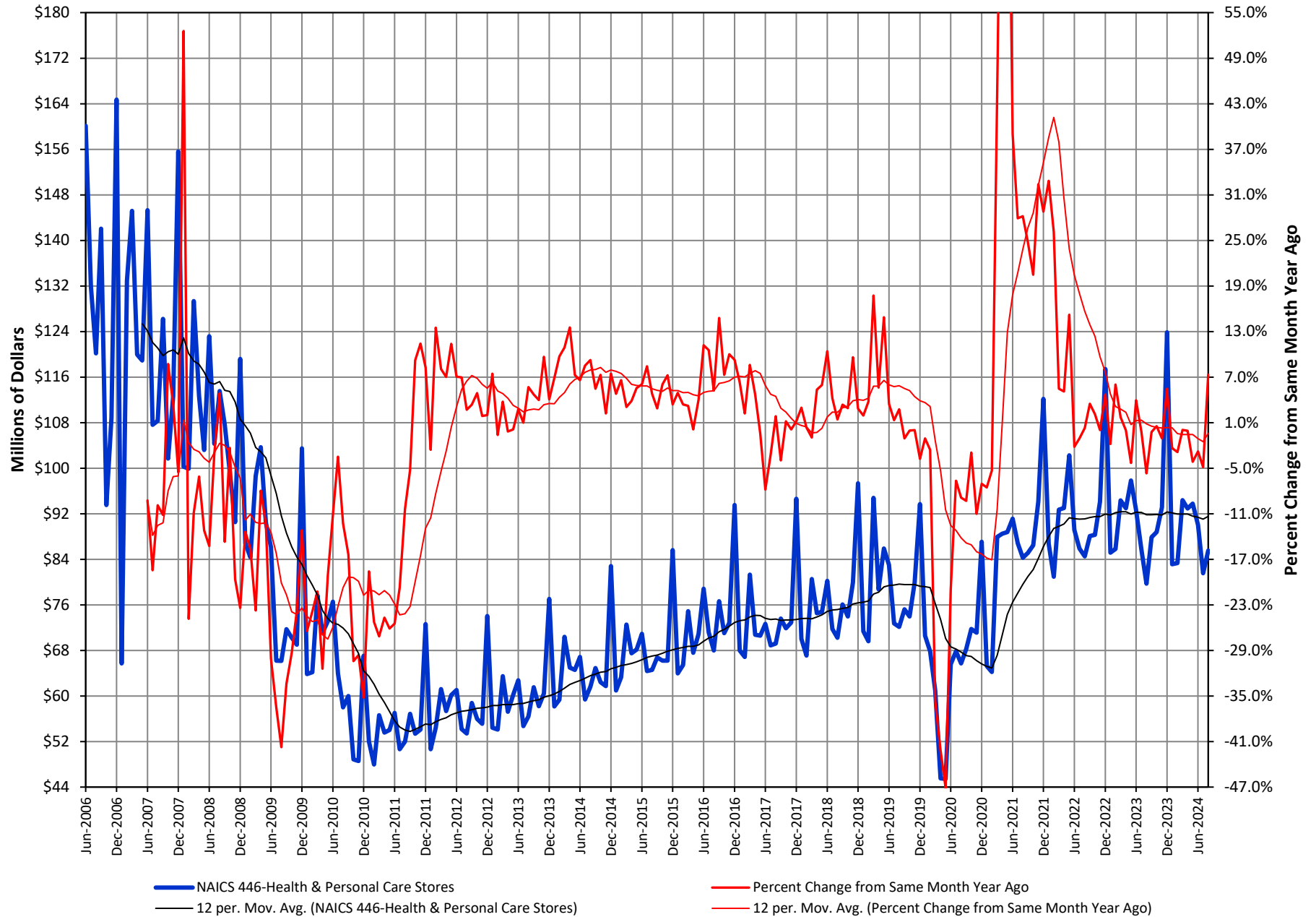
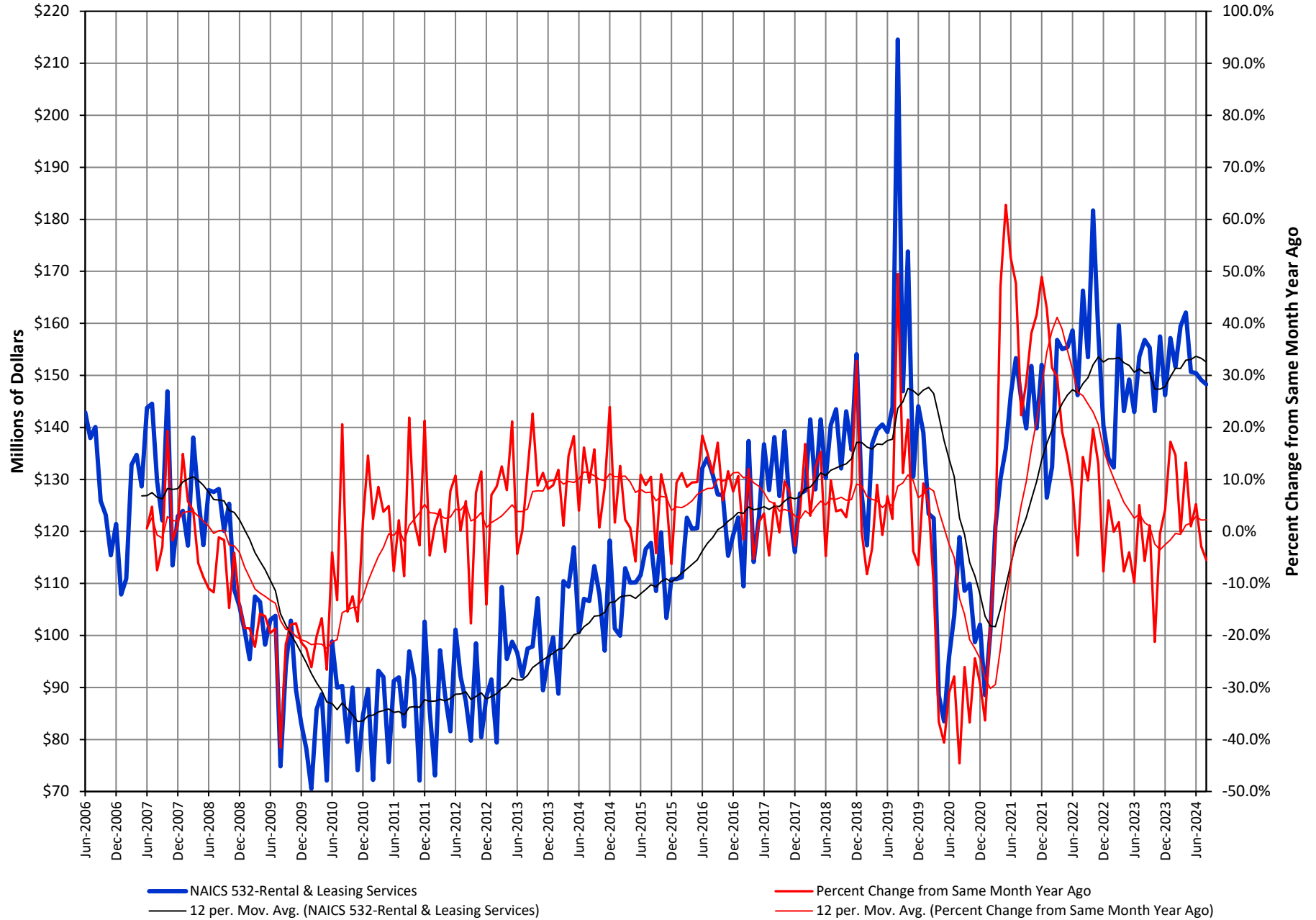


CHART 9 - Clark County
Taxable Sales for Health & Personal Care Stores
 Monthly: June 2006 - August 2024



**CHART 10 - Clark County
Taxable Sales for Rental & Leasing Services
Monthly: June 2006 - August 2024**



**CHART 11 - Clark County
Taxable Sales for Electronics & Appliance Stores
Monthly: June 2006 - August 2024**

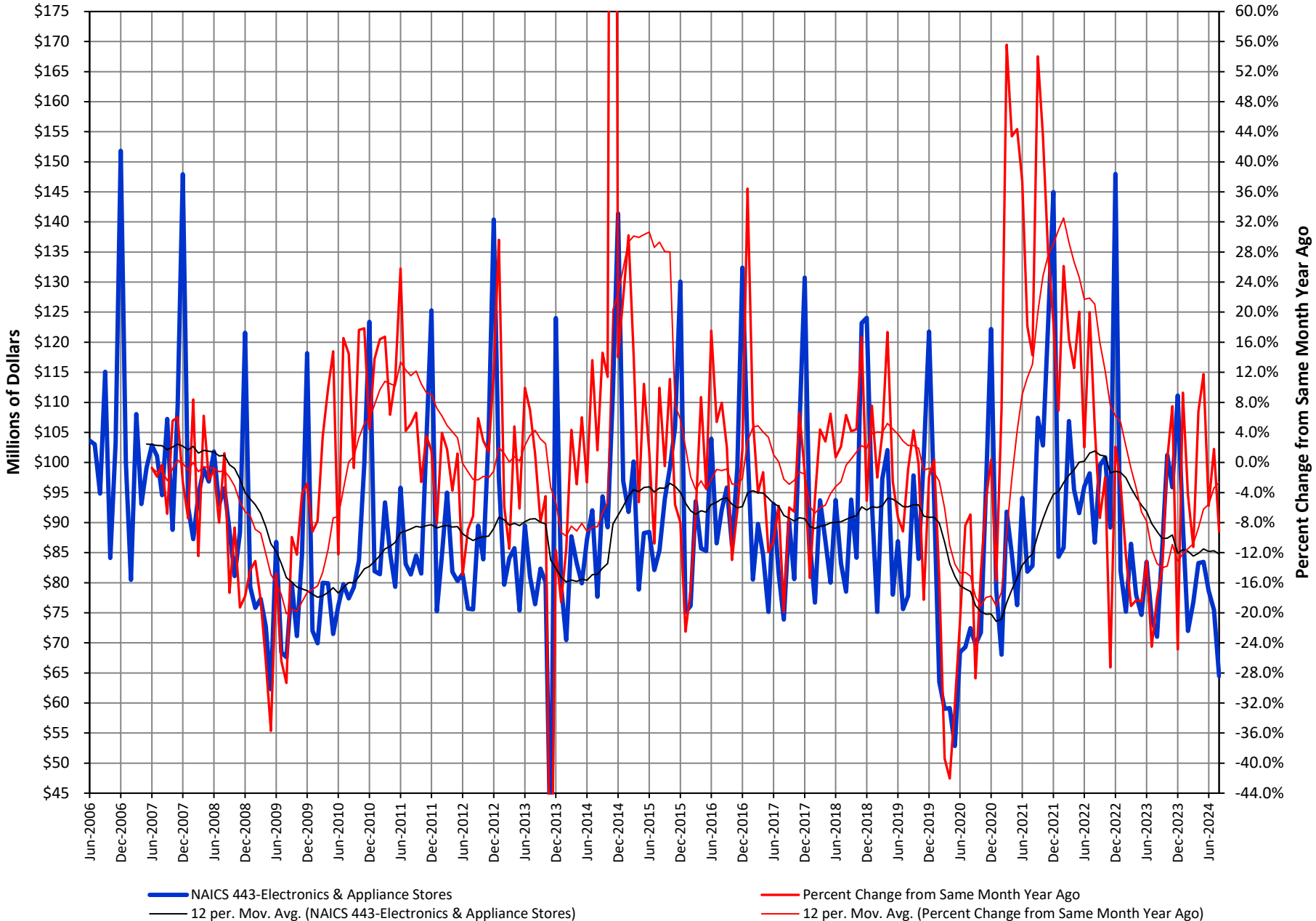
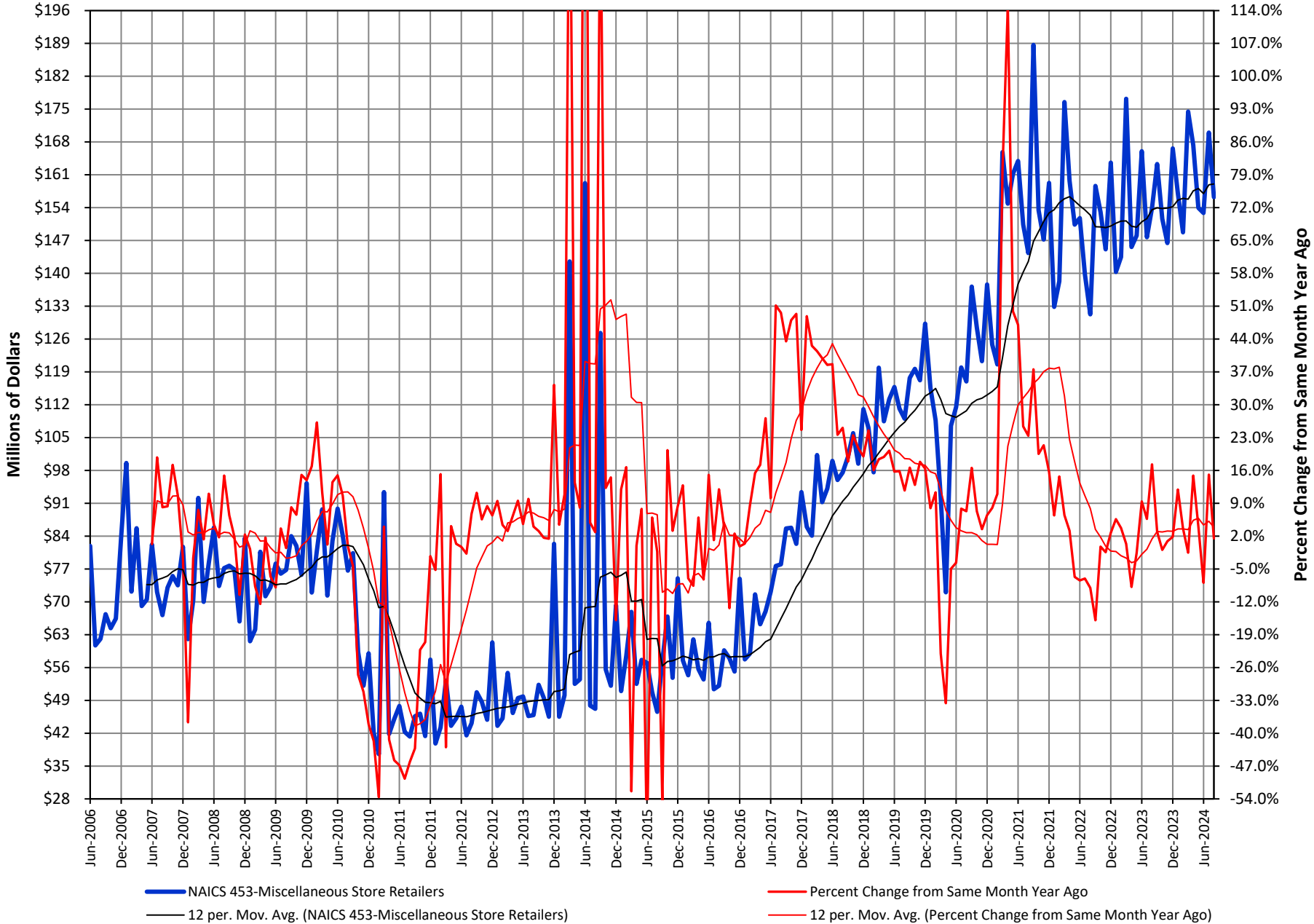


CHART 12 - Clark County
Taxable Sales for Miscellaneous Store Retailers: Clark County
Monthly: June 2006 - August 2024



**CHART 13 - Clark County
Taxable Sales for Specialty Trade Contractors
Monthly: June 2006 - August 2024**

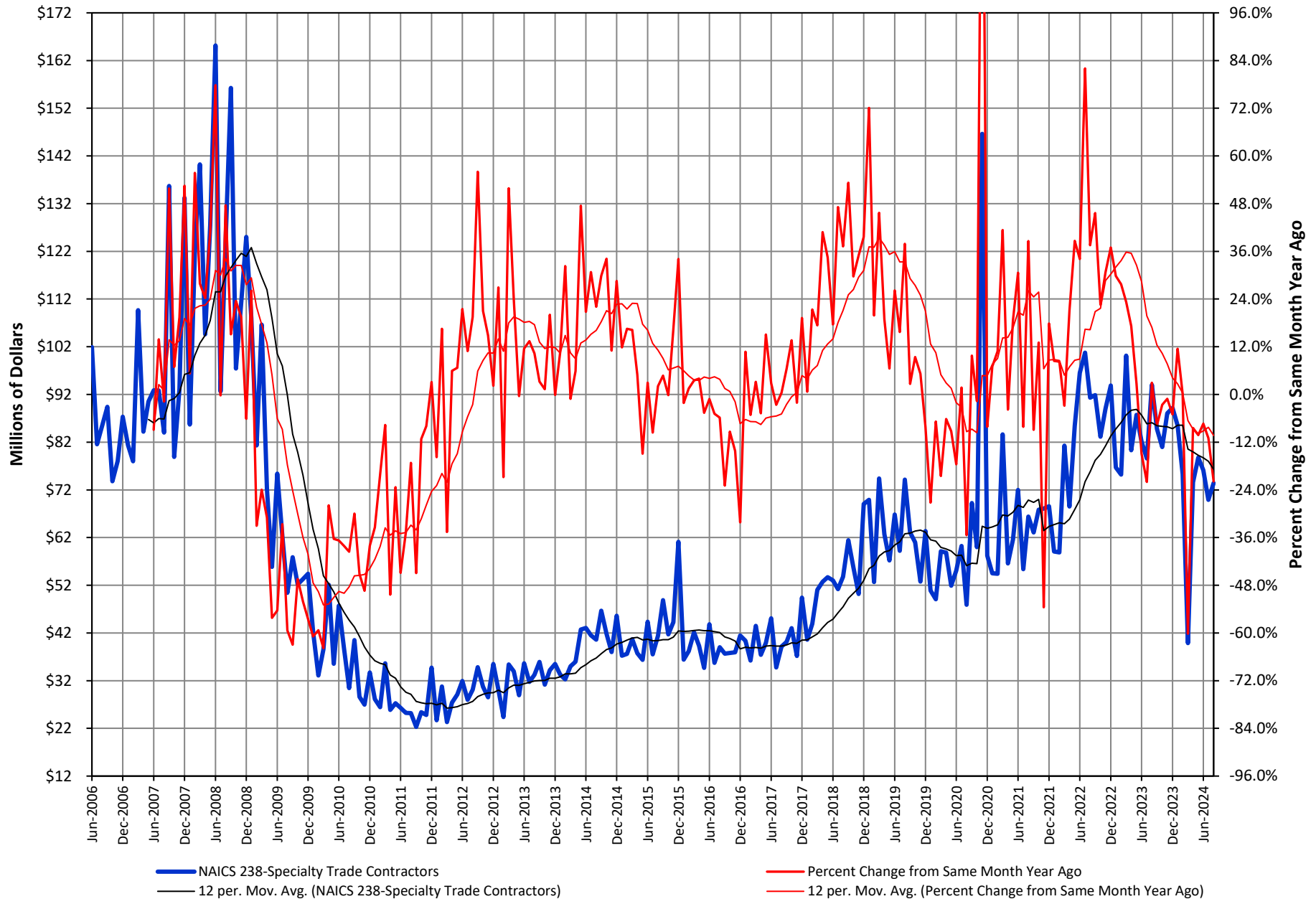


CHART 14 - Clark County
Taxable Sales for Sporting Goods, Hobby, Book & Music Stores
 Monthly: June 2006 - August 2024

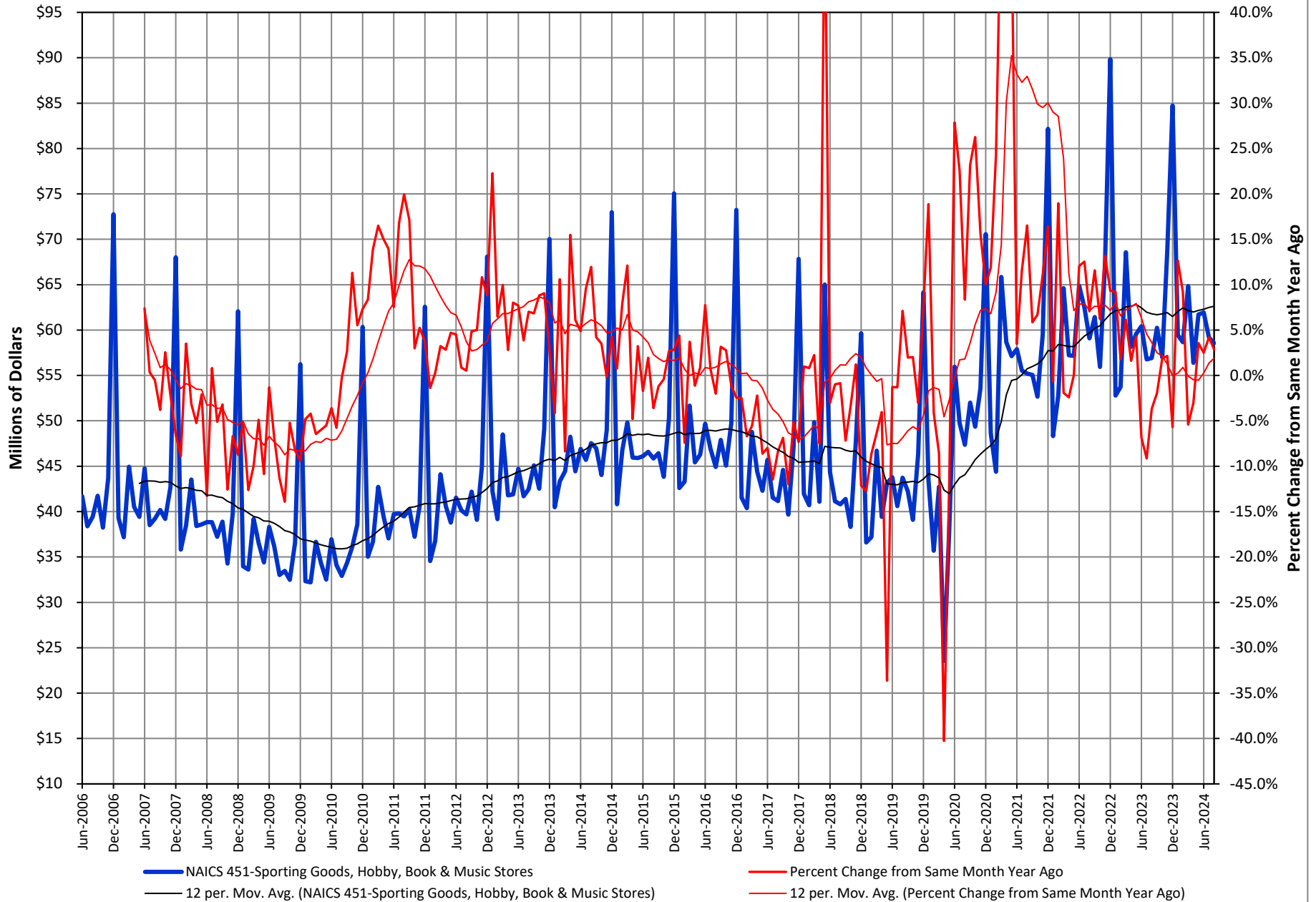
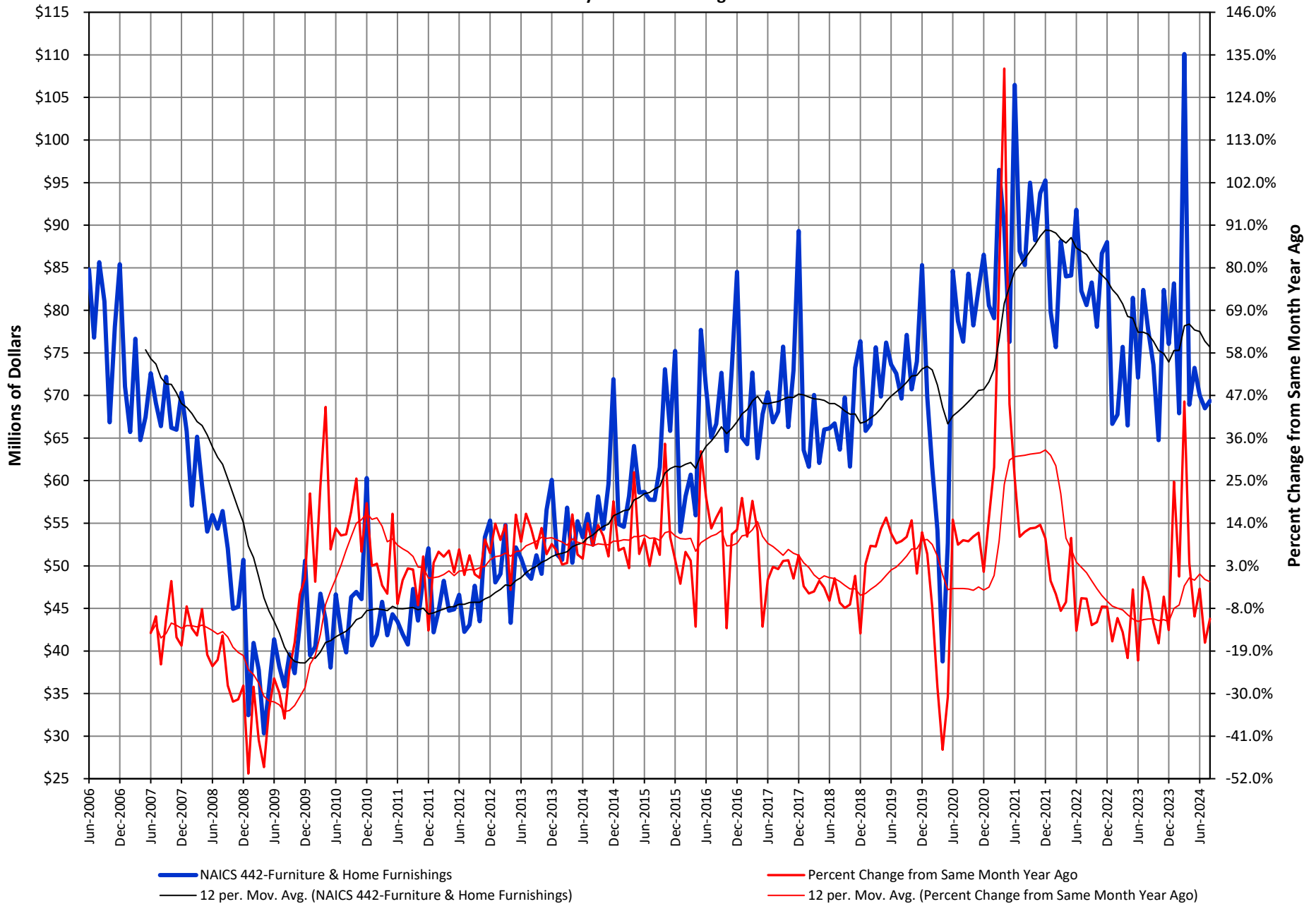


CHART 15 - Clark County
Taxable Sales for Furniture & Home Furnishings Stores
Monthly: June 2006 - August 2024



**CHART 16 - Clark County
Taxable Sales for Construction of Buildings
Monthly: June 2006 - August 2024**

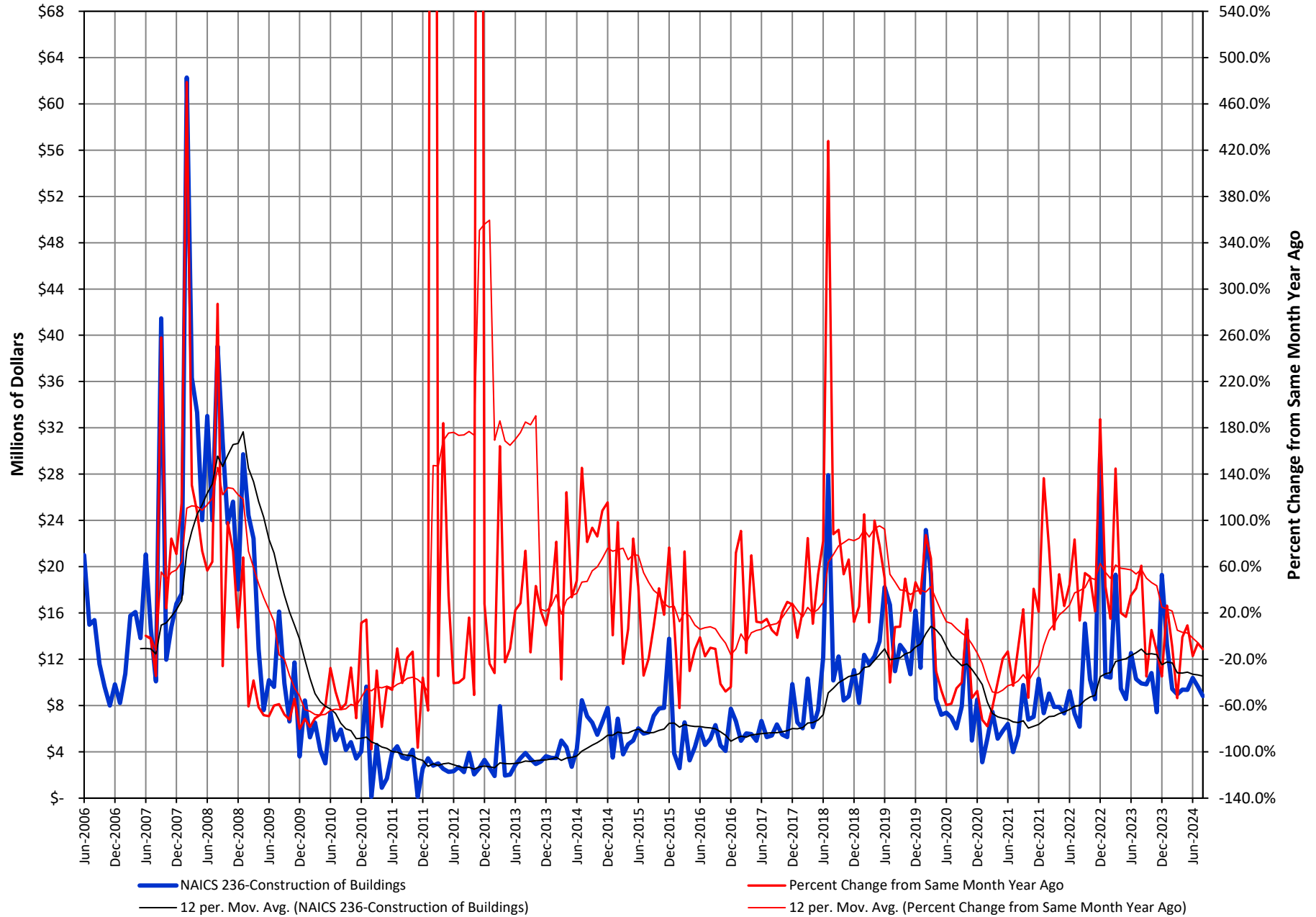


CHART 17 - Clark County
Taxable Sales for Merchant Wholesalers-Nondurable Goods
Monthly: June 2006 - August 2024

