

STATE PUBLIC CHARTER SCHOOL AUTHORITY

High School Graduation Rates

EXHIBIT E - EDUCATION
Document consists of 9 pages.
Entire exhibit provided.
Meeting Date: 04-27-16

Strength: Growth & Diversity

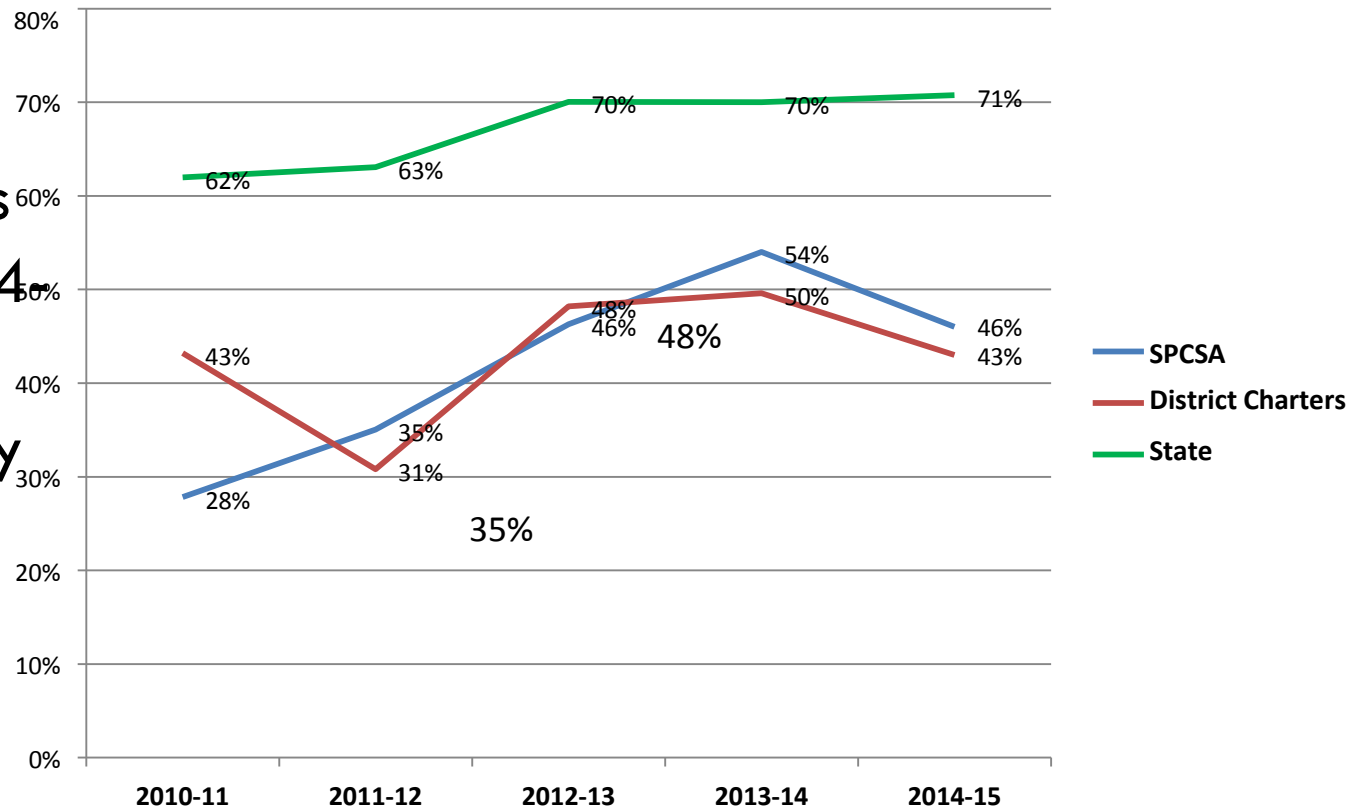
- Enrollment Up from 11K in '11 to 25.7K in '15
- Added 5,500 in '15
- Hispanic Population grew by 271% since '11
- Special Education population grew by 344% since '11
- ELL population up over 4483% since '11
- FRL up 214% since '11
—share of population has decreased however

	Am In/	Ethnicity						Two or
		AK Native	Asian	Hispanic	Black	White	Pacific Islander	More Races
		%	%	%	%	%	%	%
2011-12		1.32%	5.70%	14.84%	9.65%	63.65%	1.69%	3.15%
2012-13		1.50%	5.99%	14.72%	9.93%	63.25%	2.09%	2.53%
2013-14		1.35%	6.08%	16.11%	9.40%	61.61%	2.07%	3.38%
2014-15		0.93%	5.56%	19.21%	9.13%	57.22%	1.63%	6.33%
2015-16		0.73%	6.10%	23.72%	9.03%	51.55%	1.58%	7.28%
State 2015-16		0.95%	5.48%	41.69%	10.20%	33.96%	1.39%	6.03%

Special Populations						
Special Education		ELL		Free/Reduced Lunch		
#	%	#	%	#	%	
2010-11	529 7.01%	32 0.42%	849 11.25%			
2011-12	465 4.19%	30 0.27%	1,682 15.16%			
2012-13	713 5.12%	93 0.67%	2,908 20.87%			
2013-14	1,055 6.62%	350 2.20%	4,387 27.54%			
2014-15	1,577 7.84%	767 3.83%	4,585 22.81%			
2015-16	2,067 8.03%	1,375 5.34%	5,285 20.53%			
State 2015-16	54,944 11.75%	76,470 16.78%	260,245 55.66%			

Weakness: Declining Graduation Rates

SPCSA & district charter graduation rates plummeted in '14-'15 while state increased slightly



* District charter composite excludes schools with small N sizes as sufficient individual school data not publicly available

	2011	2012	2013	2014	2015
SPCSA	28%	35%	46%	54%	46%
District Charters	43%	31%	48%	50%	43%
State	62%	63%	70%	70%	71%

The Larger Context

In terms of graduation rate, the State Public Charter School Authority is the lowest performing public school system in the 3rd lowest performing state in the country.

System	Graduation Rate
Eureka	100%
University Schools	100%
Douglas	90.61%
Mineral	88.89%
Pershing	83.33%
Humboldt	82.99%
Elko	80%
Storey	80%
Lander	75.26%
WCSD	74.99%
Lyon	74.69%
Carson City	74.3%
Lincoln	72.58%
Clark	72.07%
Nye	69.19%
Churchill	67.2%
State Charters	46.38%

Persistent Low Performance: Grad Rate

	2011	2012	2013	2014	2015
Beacon Academy of Nevada	16.38%	14.30%	37.61%	56.52%	52.63%
Nevada Connections Academy	35.60%	36.08%	33.90%	37.19%	35.63%
Silver State Charter School	10.01%	22.41%	22.16%	22.9%	0%

The SPCSA has three schools which have consistently performed below the 60 percent statutory cutoff in SB509 since the state's adoption of the cohort graduation rate.

Lowest Ranked Schools Statewide

Distance from the Bottom

	2011	2012	2013	2014	2015
Beacon Academy of Nevada	3	3	12	14	8
Nevada Connections Academy	8	13	11	8	8
Silver State Charter School	1	7	5	3	0

Out of 117 schools reporting Graduation Rates since 2011, these three charter schools consistently perform at the bottom.

Lowest Quintile in Nevada

Distance from the Bottom

	2011	2012	2013	2014	2015
Beacon Academy of Nevada	3	3	12	14	8
Nevada Connections Academy	8	13	11	8	8
Silver State Charter School	1	7	5	3	0

Even as scores improve statewide, these three schools continue to dramatically underperform their peers.

But What About...?

Fifth Year Cohort

	2013 Graduating Seniors	2014 Graduating Super-Seniors (5 th Year)	Increase/Decrease
Beacon Academy of Nevada	37.61%	32.97%	-4.64
Nevada Connections Academy	33.91%	38.04%	4.13
Silver State Charter School	22.16%	24.55%	2.39

- Declines to limited additional impact
- 2015 5th year cohort data is currently being validated

Challenges and Opportunities

- ***“A Line in the Sand”***
 - Our leaders recognize our state and charter school graduation rates are unacceptable
- **Challenges:**
 - Internal turnarounds are rarely successful
 - ESSA and State Policy Shifts
 - Perverse Incentives
 - Limited additional seats
- **Opportunities:**
 - Closure and Authorizer-Imposed Change
 - Leveraging ESSA to meet Nevada’s ambitious goals
 - Public School Obligations and Data Integrity
 - Consequences for schools and administrators who game the system
 - Push to expand the number of high quality seats across Nevada