



LEGISLATIVE COMMISSION'S SUBCOMMITTEE TO STUDY WATER

PAHRUMP UTILITY COMPANY, INC.  
RECOMMENDATIONS FOR PAHRUMP VALLEY

PAHRUMP, NEVADA

JULY 11, 2016



# ABOUT PAHRUMP UTILITY

- WATER AND WASTEWATER UTILITY
  - SERVING SOUTHERN PAHRUMP VALLEY
- OWNED AND OPERATED
  - 3 GENERATIONS OF THE HAFEN FAMILY



# MANAGEMENT - 3 GENERATIONS

- GREGORY T. HAFEN, II - MANAGER
  - PAHRUMP GROUNDWATER MANAGEMENT COMMITTEE - FORMER CHAIRMAN
  - PAHRUMP REGIONAL PLANNING COMMISSION - VICE CHAIR
- M. KENT "TIM" HAFEN - FOUNDER
  - PAHRUMP FARMER AND BUSINESS MAN SINCE 1951
  - SERVED 4 TERMS IN THE STATE ASSEMBLY, STATE FARM BUREAU PRESIDENT, DIVISION OF AGRICULTURE CHAIRMAN
- GREGORY T. HAFEN, SR. - LOCAL ATTORNEY AND MEDIATOR
- VICKI HAFEN SCOTT - MANAGEMENT AND FINANCE

## WATER FACTS #1

- Water is measured in acre feet: 1 acre foot equals 325,850 gallons of water.
- If you use 900 gallons per day for 365 days, you have used 1 acre foot for the year.
- 1 acre foot will support 3 households using 300 gallons per day.
- The average utility customer home in Pahrump uses less than 300 gallons of water per day.



## WATER FACTS #2

- Water supplies are available to support future growth.
- Residential & commercial only use 50% of available water.
- 20,000 acre feet annually (afa)\* comes into the valley.

\* Nevada Division of Water Resources estimate

### CURRENT WATER USAGE (*Approximate #'s*):

- 10,000 afa - residential & commercial.
- 4,000 afa - agriculture (or future growth).
- 6,000 afa – not used, available for growth.



## WATER FACTS #3

- Our typical residential water customer uses:
  - 40% indoors • 60% outdoors
- Indoor use goes to the wastewater plant and can be recycled.
- Outdoor watering is used by plants or evaporates.
  - Conservation outdoors is important.
- You can lower your outdoor use by using:
  - Drip Irrigation • Less Turf • Water Tolerant Plants

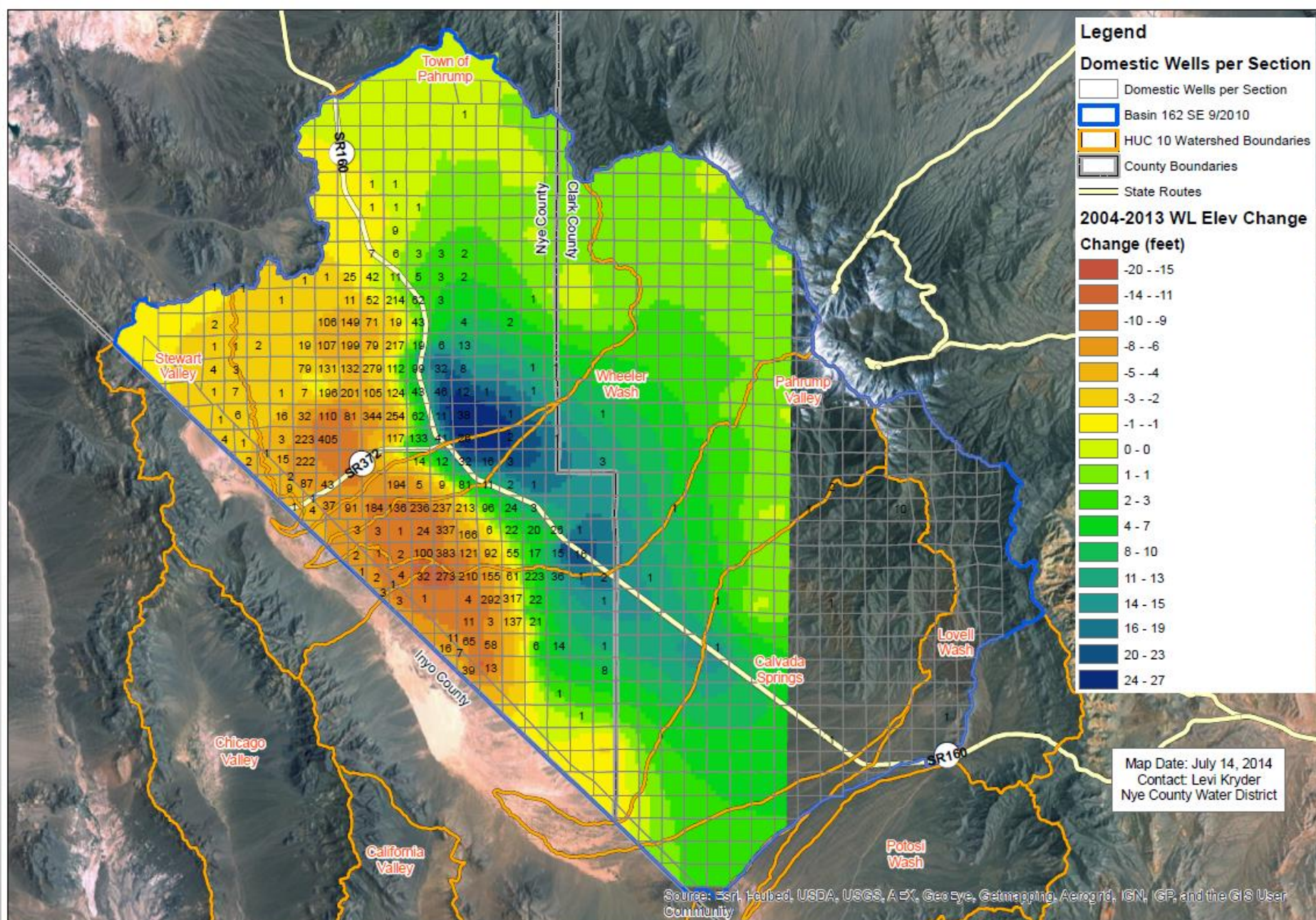




# PAHRUMP VALLEY ISSUES

- OVER APPROPRIATION
  - WATER DISTRIBUTION
  - LACK OF INFRASTRUCTURE
  - LACK OF FUNDING FOR NEW INFRASTRUCTURE
  - MISINFORMATION
- 



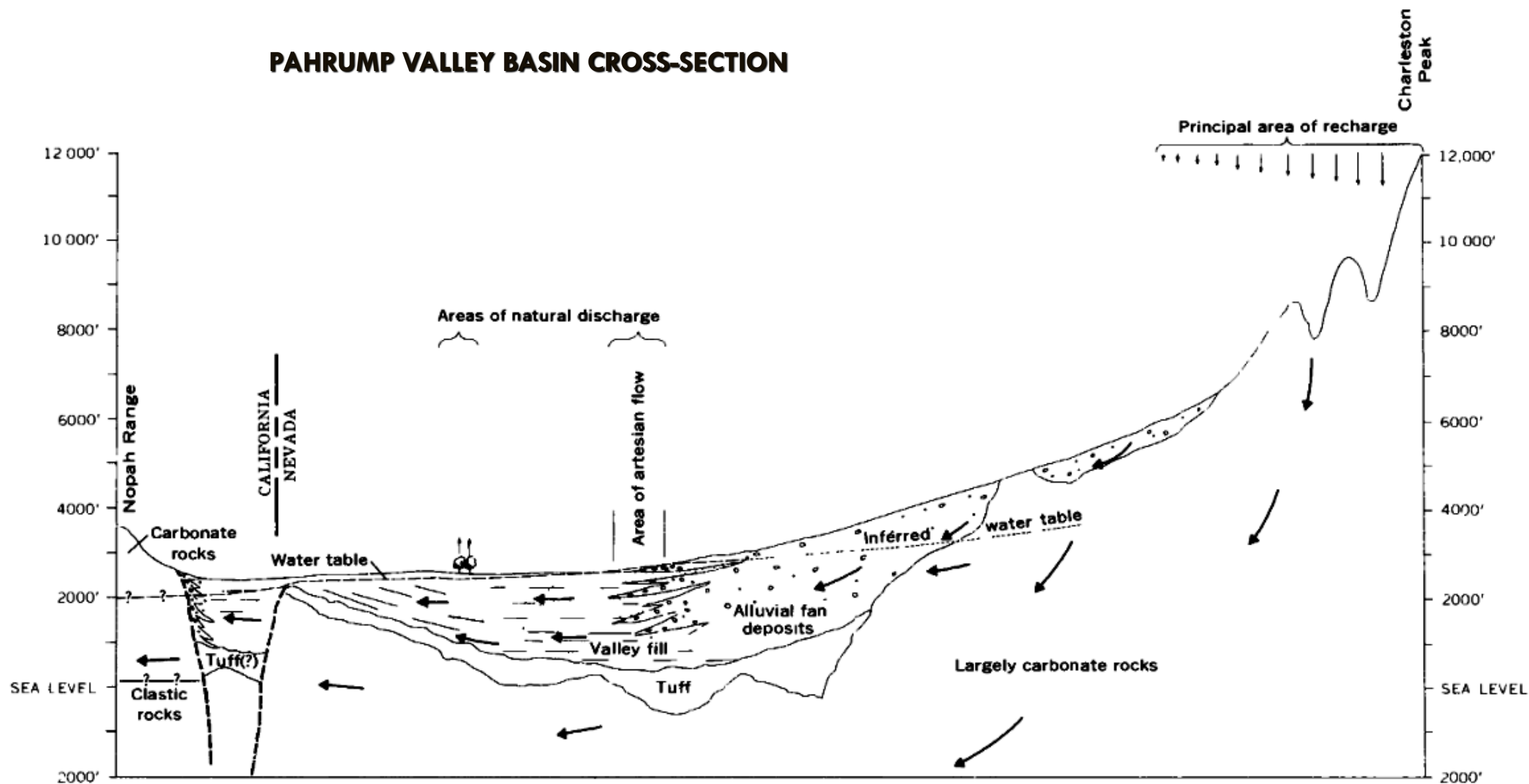


**Groundwater Basin 162 Subwatersheds,  
Nye and Clark Counties, Nevada**

0 2.5 5 10 15 20 Miles



# PAHRUMP VALLEY BASIN CROSS-SECTION



**FIGURE 5.—Principal topographic, geologic, and hydrologic features of Pahrump Valley, as shown in section from Charleston**



# WE ALL NEED TO WORK TOGETHER

- WATER IN PAHRUMP IS A LIMITED RESOURCE
  - ~60,000 AFA APPROPRIATED
  - ~11,000 DOMESTIC WELLS
- PERENNIAL YIELD ESTIMATE IS 20,000 AFA






# SUPPORT FOR STATE ENGINEER RECOMMENDATIONS

- WATER BANKING
  - SUSPEND “USE IT OR LOSE IT”
  - GROUNDWATER MANAGEMENT PLANS APPLY TO ALL USERS IN A BASIN
  - ALLOW DOMESTIC WELL INDOOR USE DURING CURTAILMENT
  - METERING OF ALL WATER USERS IN OVER APPROPRIATED BASINS
    - HOW CAN YOU MANAGE SOMETHING YOU CAN NOT MEASURE
- 



# RECOMMENDATIONS FOR BDR'S

- UTILITY COMPANIES
    - PROVIDE PERMANENT WATER RIGHTS TO MEET UTILITY COMPANY SERVICE COMMITMENTS
    - MAINTAIN PRIORITY OF WATER RIGHTS FOR UTILITIES DURING CURTAILMENT
    - ALLOW CONSERVATION TO APPLY AS A BENEFICIAL USE
    - ELIMINATE REQUIREMENT FOR EXTENSIONS OF TIME FOR COMMITTED WATER RIGHTS
    - RETURN FLOW CREDITS
- 



**GREGORY T. HAFEN II**  
GENERAL MANAGER

5250 HAFEN RANCH RD.  
PAHRUMP, NV 89061  
775-727-1629

[GTH2@PUCIHAFEN.COM](mailto:GTH2@PUCIHAFEN.COM)  
[WWW.PAHRUMPUTILITY.COM](http://WWW.PAHRUMPUTILITY.COM)