

# **Presentation to the Legislative Committee on Public Lands**

Thursday August 28, 2014

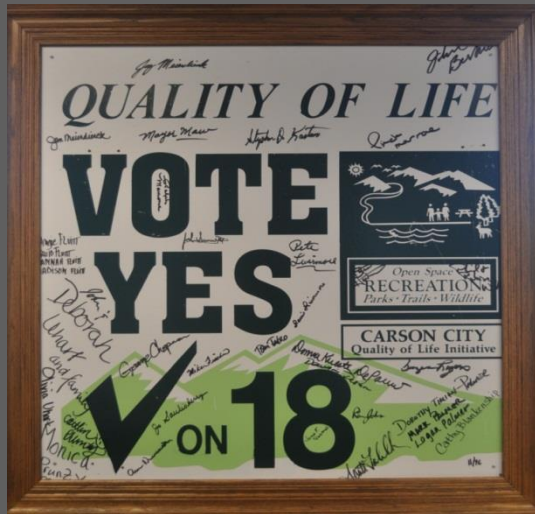
Carson City and Resource Concepts, Inc.

**Management Plan for Carson City Open  
Space and Parks in the Carson River  
Area, a collaborative effort with the BLM**

**Ash to Kings Canyon Trail a collaborative  
project with the US Forest Service and  
Muscle Powered**

EXHIBIT D - LANDS  
Document consists of 38 pages.  
Entire exhibit provided.  
Meeting Date: 08-28-14

# Ensuring recreation and conservation in perpetuity; **The Quality of Life Initiative 1996**



## .0025 Sales Tax

- ➔ 40% Open Space
- ➔ 40% Parks and Trails
- ➔ 20% Maintenance of Parks

## What is Open Space?

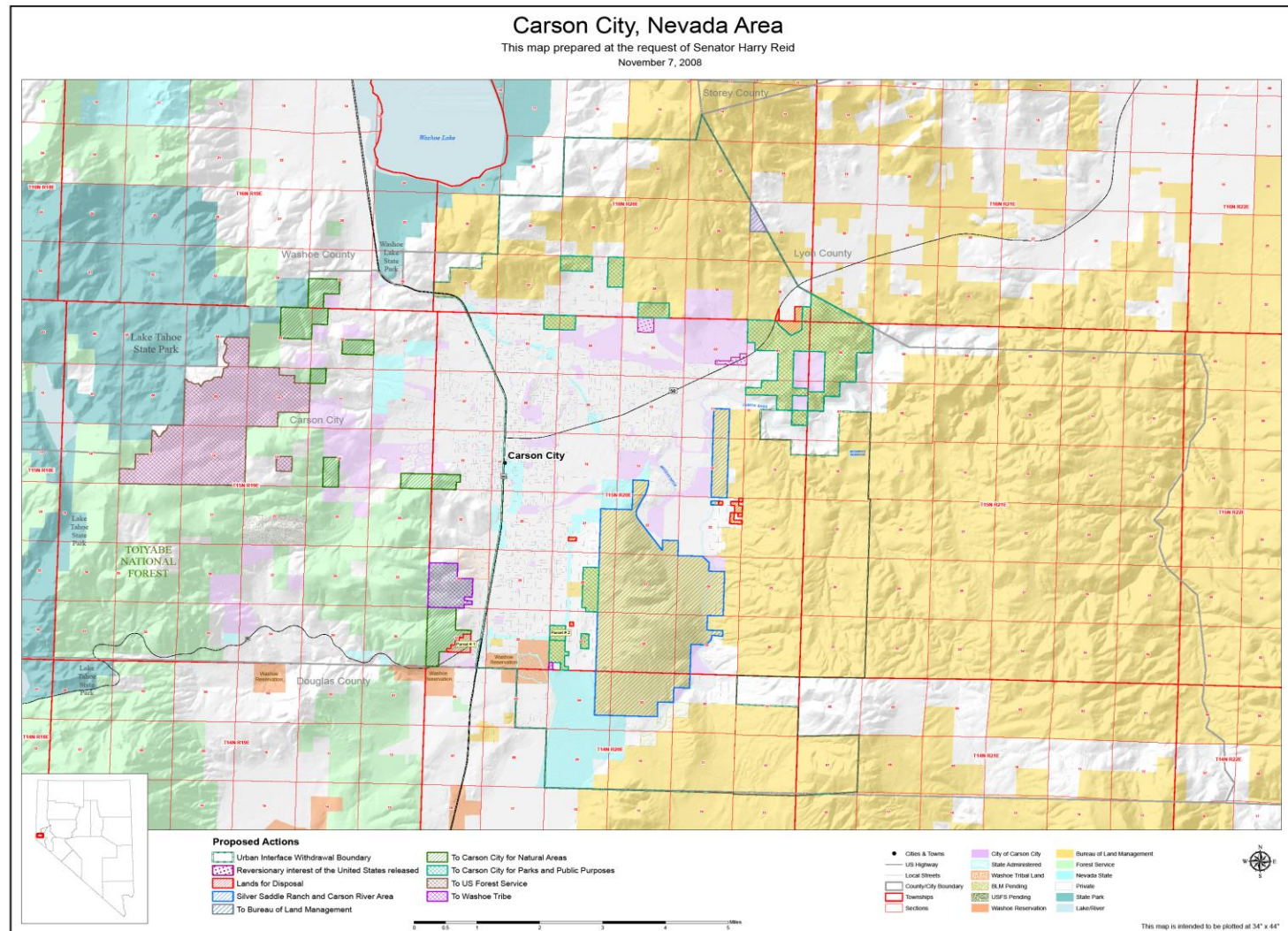
“Open space is undeveloped land having significant natural resources important to the quality of life in our community” Ballot Question #18

OSAC has refined that definition to include:

- ➔ land in a primarily or complete natural state
- ➔ land that contains significant natural, visual or cultural features that need protection
- ➔ land that is permanently protected

# Federal Lands Bill

## Carson City Community Vitality Act (Omnibus Public Lands Management Act of 2009)







**Prepared for:**

Carson City  
Parks, Recreation &  
Open Space Department

*—and—*

Bureau of Land  
Management

**Prepared by:**

Carson City  
Parks, Recreation &  
Open Space Department

*—with—*

WashoZephyr Consulting

*—and—*

Resource Concepts, Inc.

**Draft: July 2014**

# Management Plan

## For Carson City Open Space and Parks In the Carson River Area





# Plan Purpose

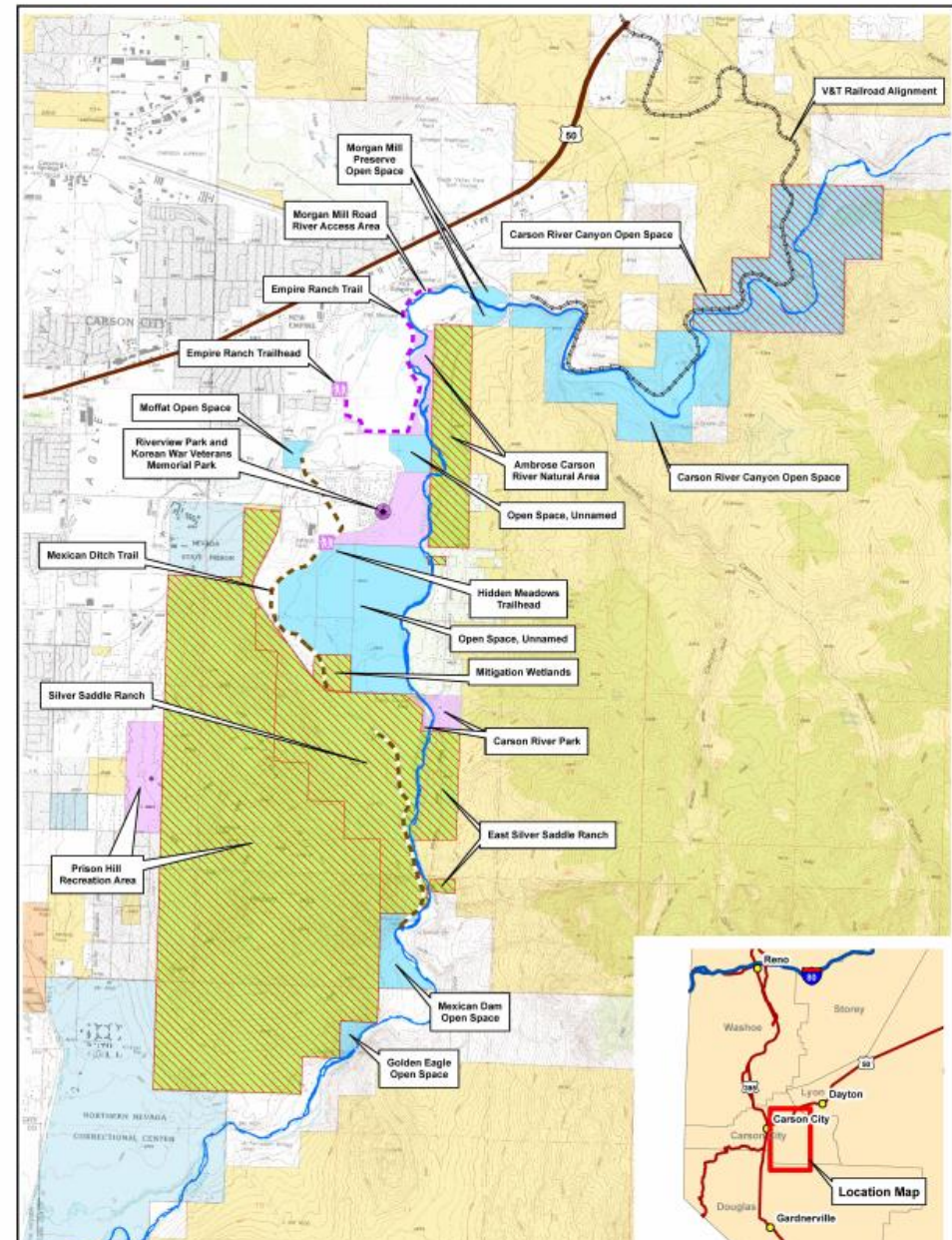
- ⇒ To satisfy BLM Conservation Easement
- ⇒ To describe land condition, development and use
- ⇒ To summarize pertinent information in existing documents
- ⇒ To recommend management actions

# Management Guidance Documents

- ➔ 1996 Carson River Master Plan
- ➔ 2000 CC Open Space Plan
- ➔ 2006 CC Master Plan
- ➔ 2006 CC Parks and Recreation Master Plan
- ➔ 2006 Unified Pathways Master Plan
- ➔ 2006 Carson River Watershed Adaptive Stewardship Plan
- ➔ 2008 Carson River Watershed Regional Floodplain Mgmt Plan
- ➔ 2008 Creating a Community Vision: Silver Saddle Ranch and the Carson River
- ➔ 2010 BLM Conservation Easement
- ➔ 2010 Programmatic Agreement

# 2.0 Conservation Easement Lands

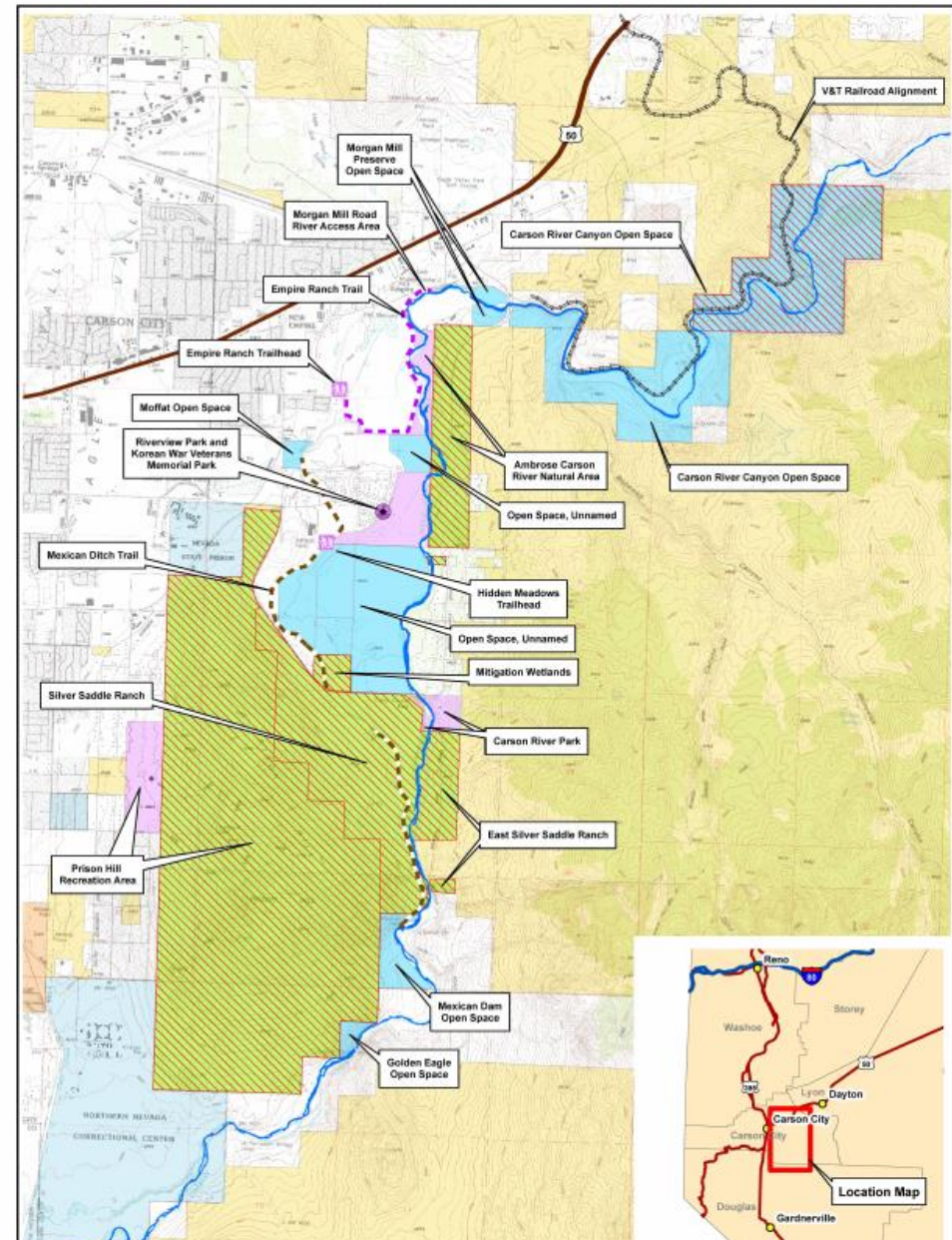
- ➡ *Ambrose Carson River Natural Area*
- ➡ *Prison Hill Recreation Area*
- ➡ *Silver Saddle Ranch*





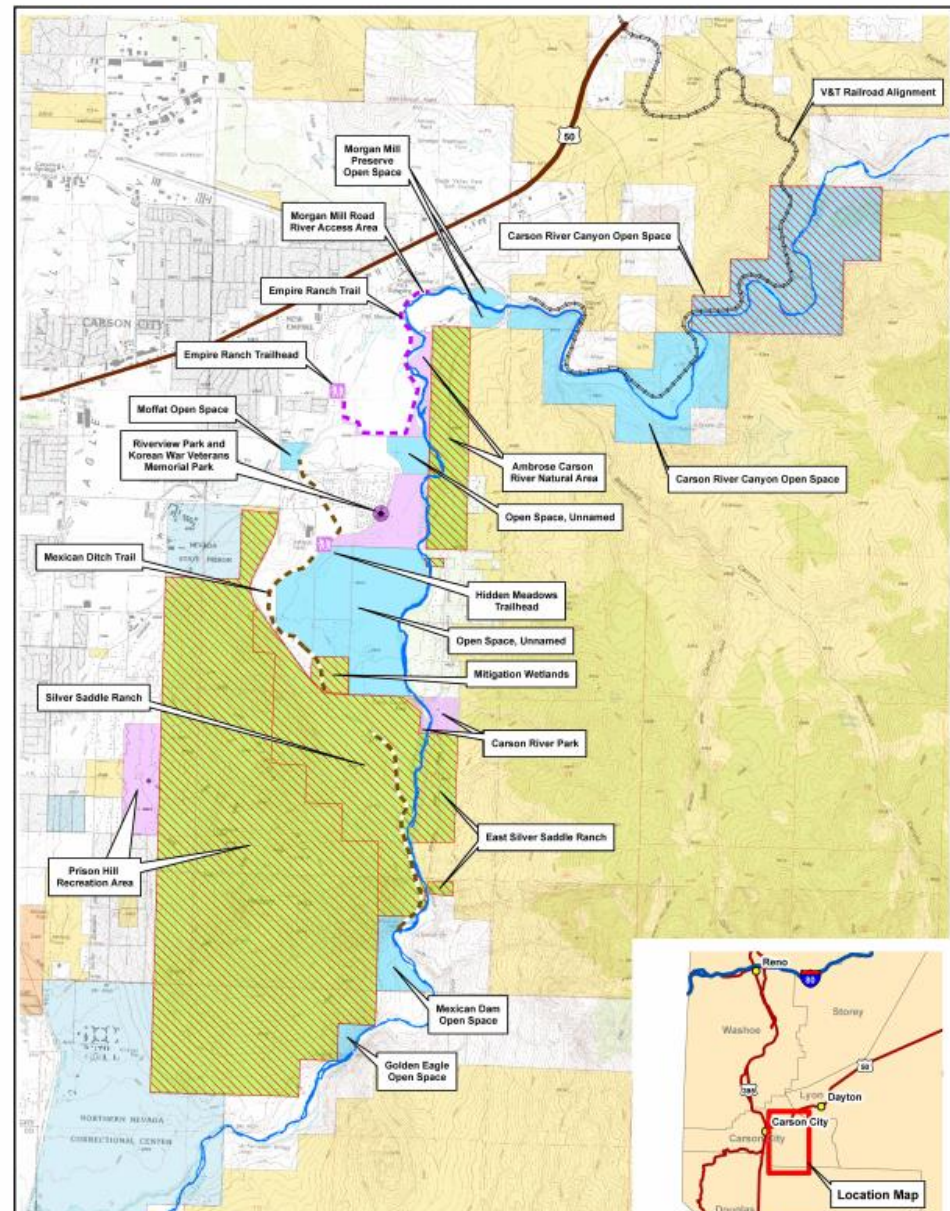
# 3.0 Open Space

- ➔ Carson River Canyon
- ➔ Golden Eagle
- ➔ Mexican Dam
- ➔ Moffat
- ➔ Morgan Mill Preserve
- ➔ unnamed (Andersen Ranch and Jarrard Ranch acquisitions)
- ➔ unnamed (Vidler Water Company donation)



# Parks

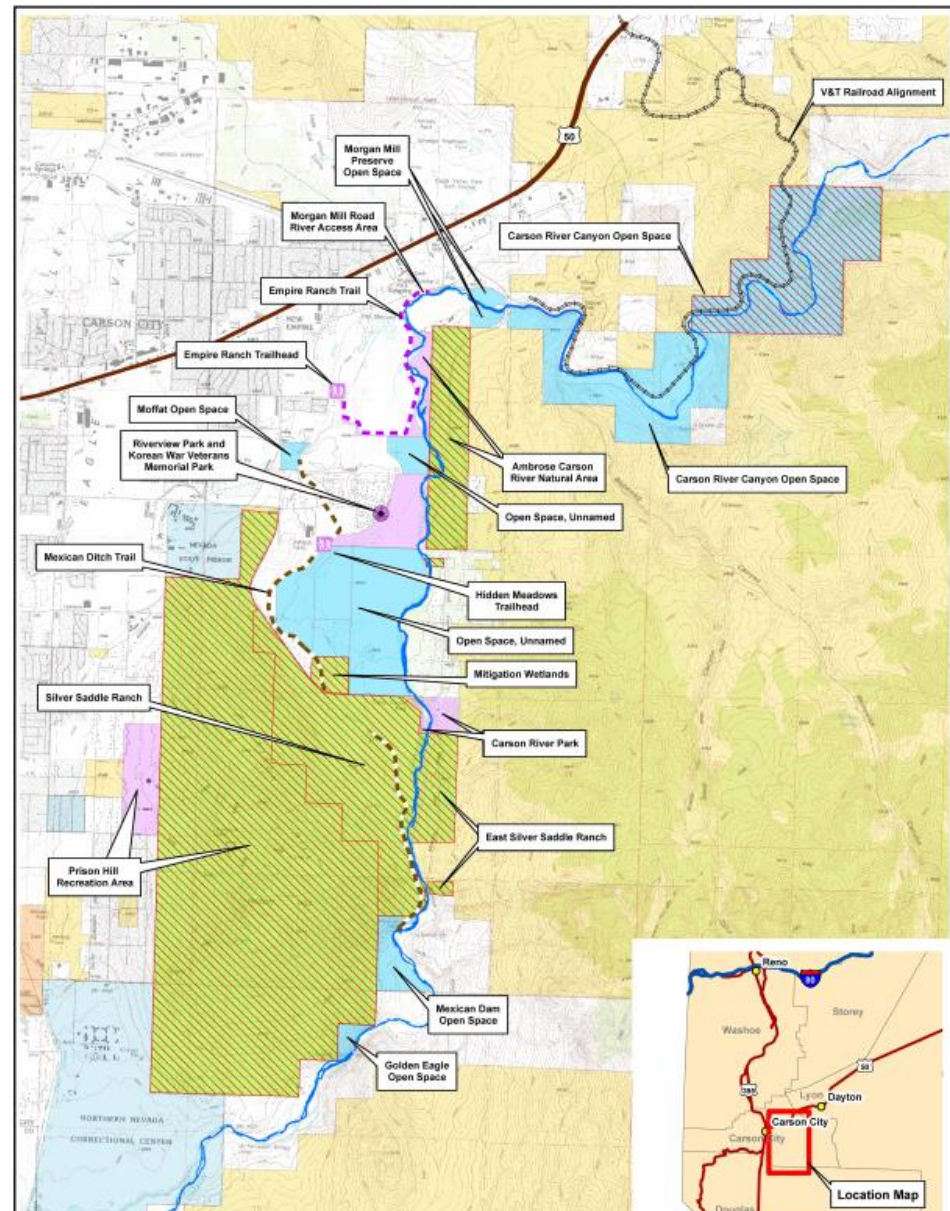
- ➡ Ambrose Carson River Natural Area
- ➡ Carson River Park
- ➡ Prison Hill Recreation Area
- ➡ Riverview Park
- ➡ Korean War Veterans Memorial Park





# Trails

- ➔ Carson River Aquatic Trail
- ➔ Empire Ranch Trail
- ➔ Hidden Meadows Trailhead
- ➔ Mexican Ditch Trail
- ➔ Morgan Mill Road River Access Area





# 5.0 Management Considerations for All Lands

- ⇒ *Adjacent Lands (BLM, NV State)*
- ⇒ *Maintenance and Performance Levels of Service*
- ⇒ *Recreation and Resource Management*
- ⇒ *Summary of Recommended Actions*

# Resources

- Accessibility
- Agriculture
- Camping
- Carson River Mercury Site
- Cultural Resources
- Disc Golf
- Dogs
- Ecotourism
- Floodplain & River Environment
- Fuels Management
- Interpretive Programs
- OHV Use
- Public Safety
- Shooting
- Signage
- Trails
- Water Resources
- Weed Control
- Wetlands
- Wild Horses

# 6.0 Administration

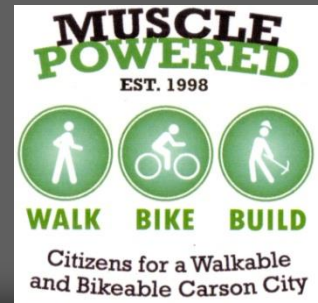
- ⇒ *Related Plans and Ordinances*
- ⇒ *Fees and Reservations*
- ⇒ *Communication Planning*
- ⇒ *Summary of Recommended Actions*



# 7.0 Staffing and Budgets

- ⇒ *Division Responsibilities*
- ⇒ *Staffing*
- ⇒ *Budgets*
- ⇒ *Summary of Recommended Actions*

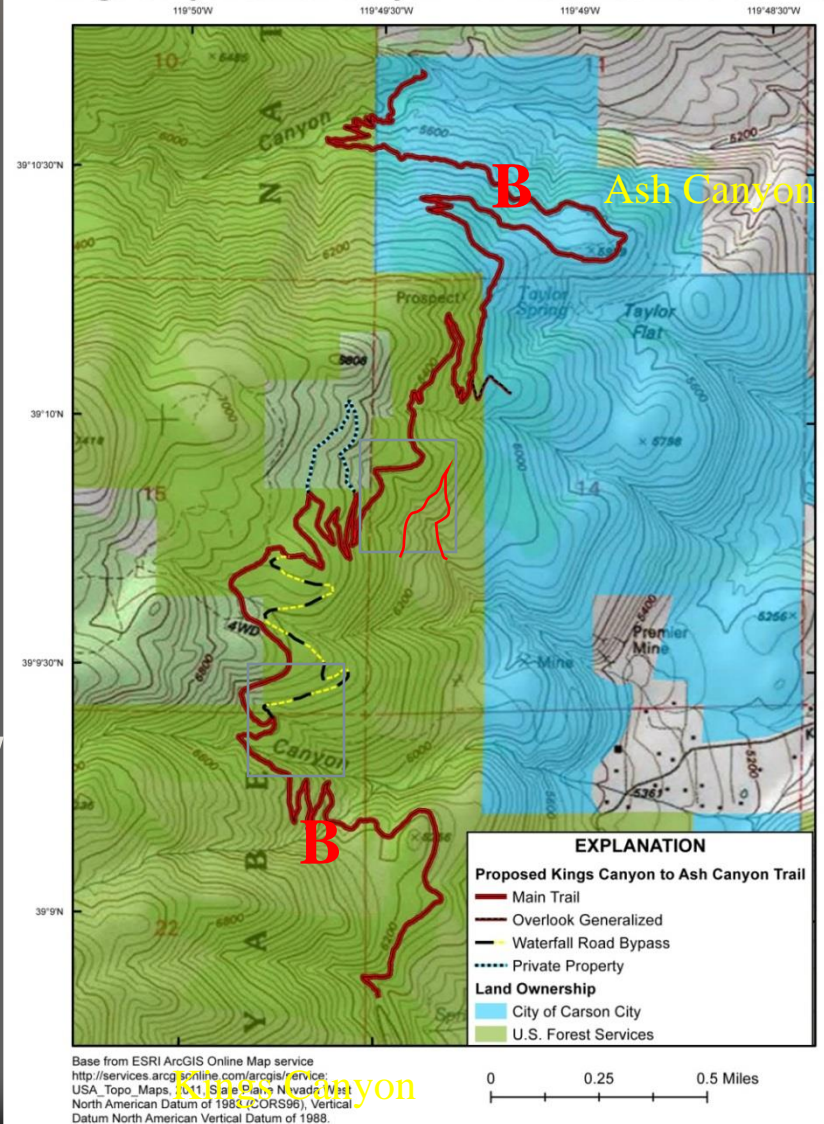
# ASH CANYON to Kings Canyon Trail



# THE ASH TO KINGS CANYON TRAIL

- Joint effort between Carson City, Muscle Powered, USFS & GBI
- Much of trail is completed
- Remainder will be built in 2014
- Two year-round creeks that require bridges
  - Ash Canyon Creek on City Property
  - It will be modified USFS Timber Stringer Trail Bridge, 20 ft. span.
- Trailhead Kiosk & Signage

Kings Canyon to Ash Canyon Non-Motorized Multi-Use Trail





# PLANNING, DESIGN, DEVELOPMENT & MAINTENANCE

- Compatible with adjacent land uses and physical setting
- Sustainable and long-lasting design
- Will reduce impacts to the riparian zone
- Proven USFS design with difficult access to site
- grant funding will be matched by volunteer labor to construct abutments

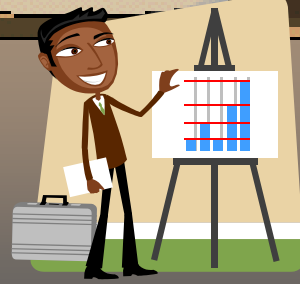


# IT'S ALL ABOUT COMMUNITY

- What started as just the desire to ride fun trail
- Has become a great way build community together



# 2013 MP TRAIL STATISTICS



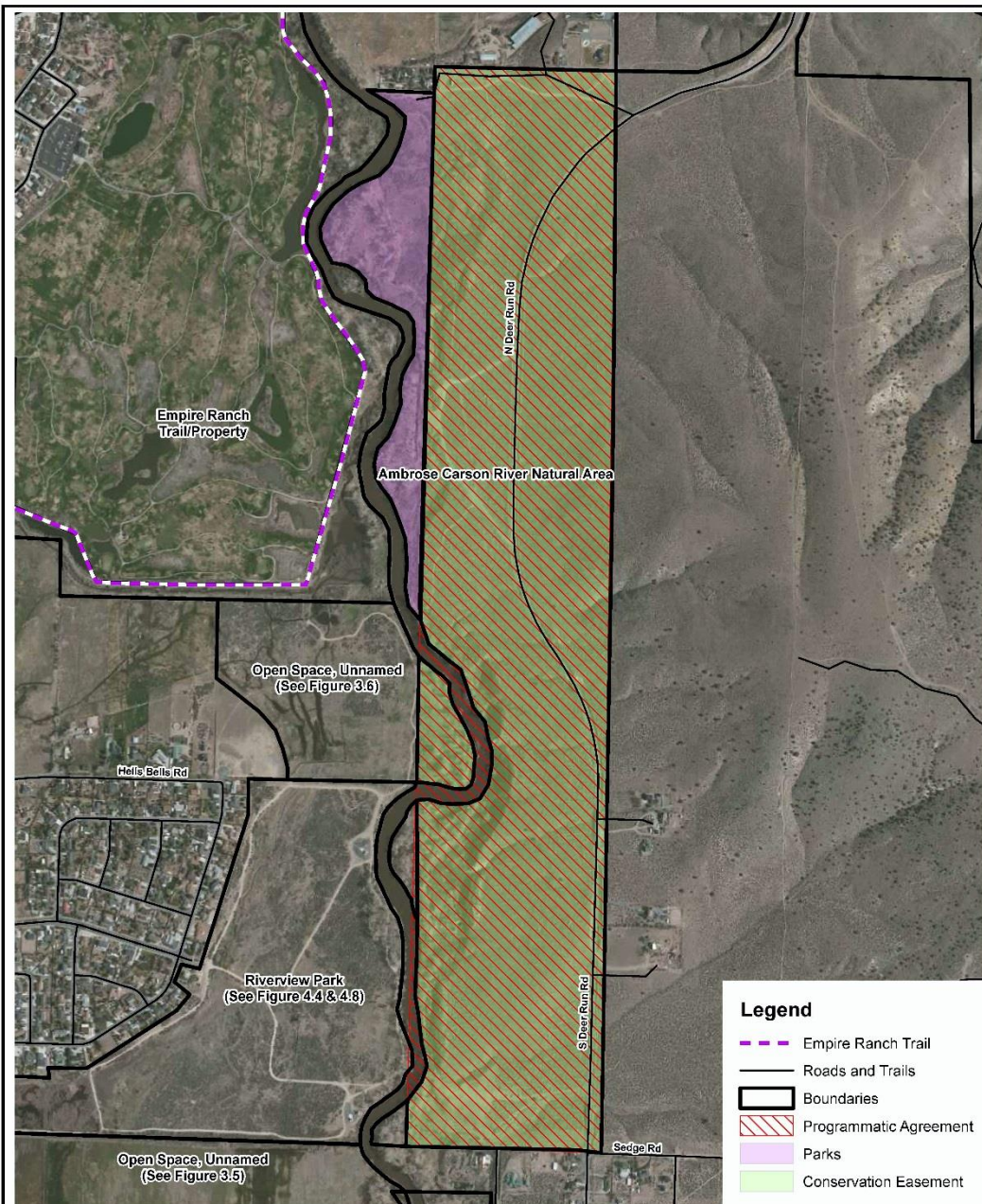
- ⇒ 120 Volunteers, 59 Mountain Bikers, 22 Hikers, 11 Runners, 30 Unknown preference - Scouts, Redrock Dental employees, etc
- ⇒ 121 work days, most of which were 2-3 hr evening work parties.
- ⇒ 2,758 MP volunteer hours – 2013
- ⇒ 1.25 miles – 2013 Completed by MP on CC and PP sections
- ⇒ NCC Crews completed 1.7 miles in 2012-2013
- ⇒ 0.75 miles of CC and Private Property trail remaining
- ⇒ 1.6 miles of USFS trail remaining
- ⇒ 2 bridges to build
- ⇒ Signage



# Questions and Discussion



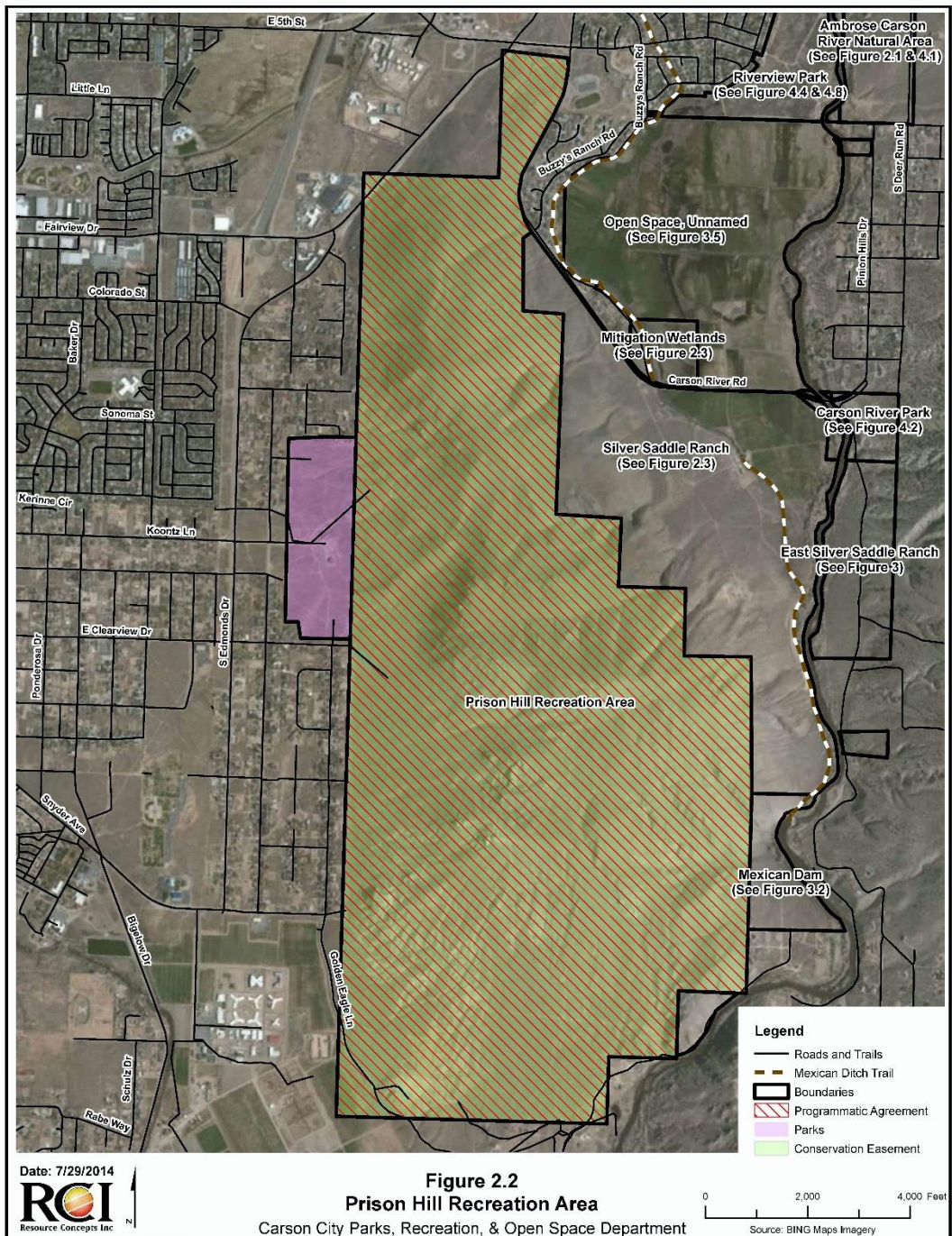




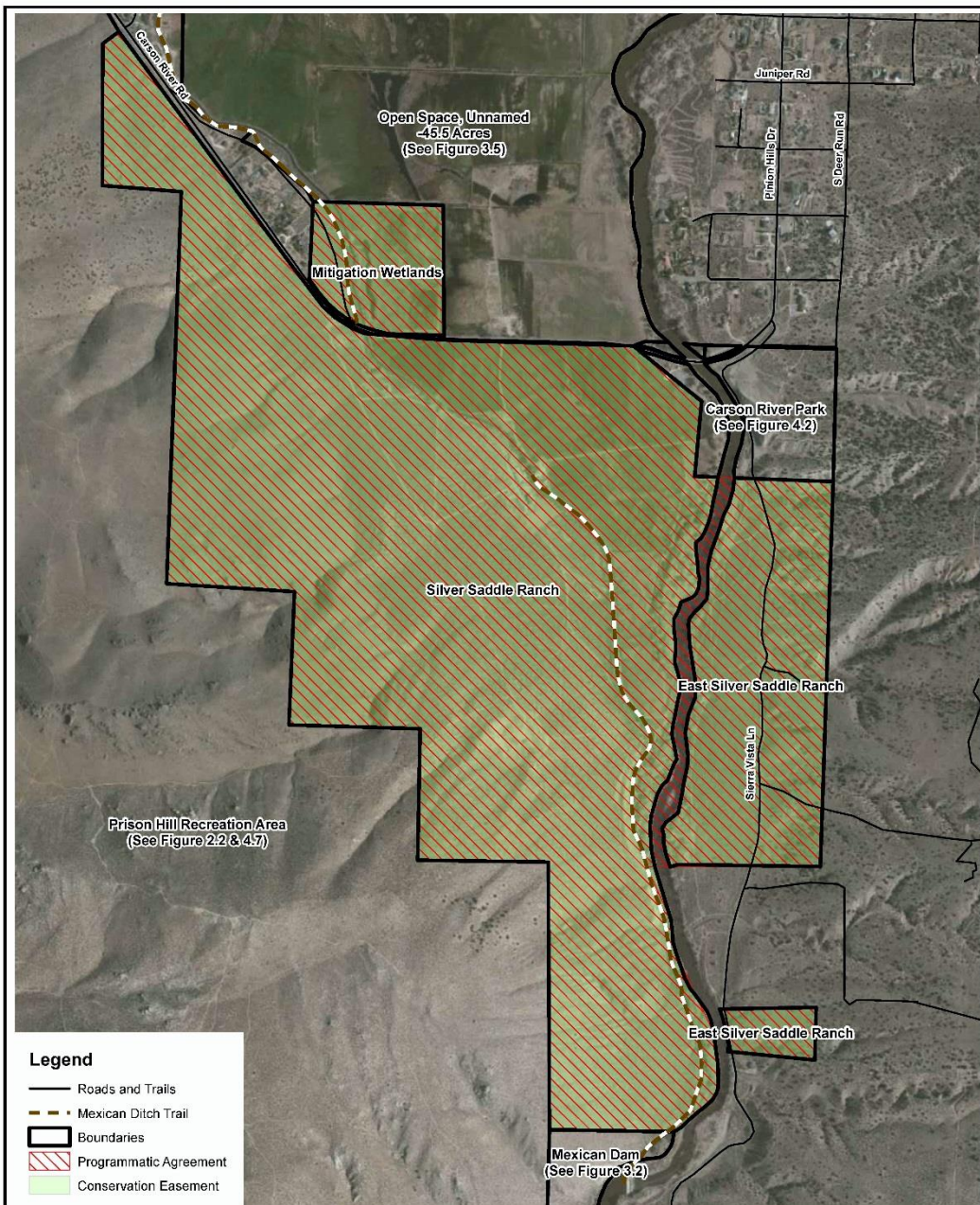
Date: 7/29/2014  
**RCI**  
 Resource Concepts Inc.

**Figure 2.1**  
**Ambrose Carson River Natural Area**  
**Park and Conservation Easement Lands**  
 Carson City Parks, Recreation, & Open Space Department







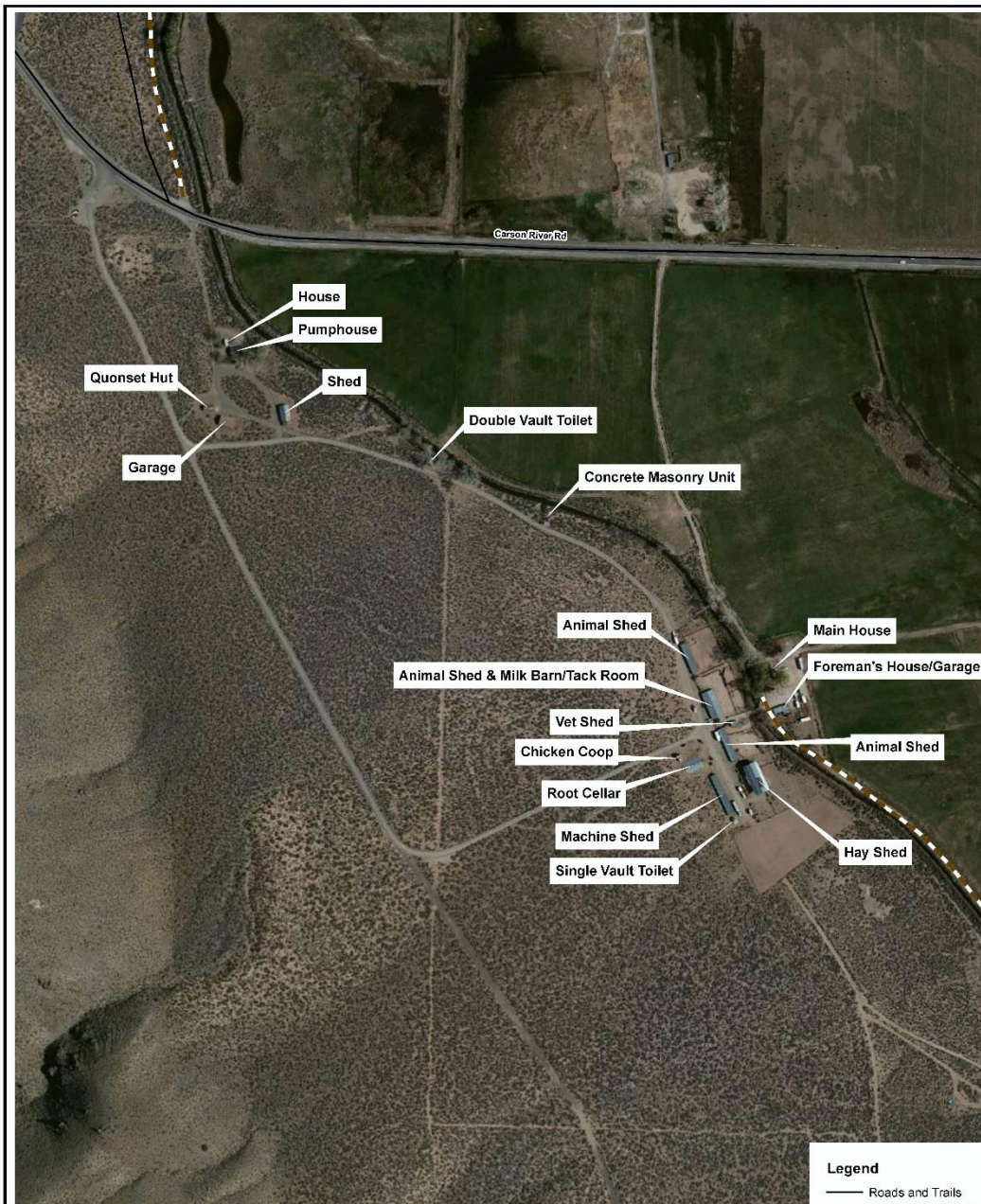


Date: 7/29/2014  
**RCI**  
 Resource Concepts Inc.

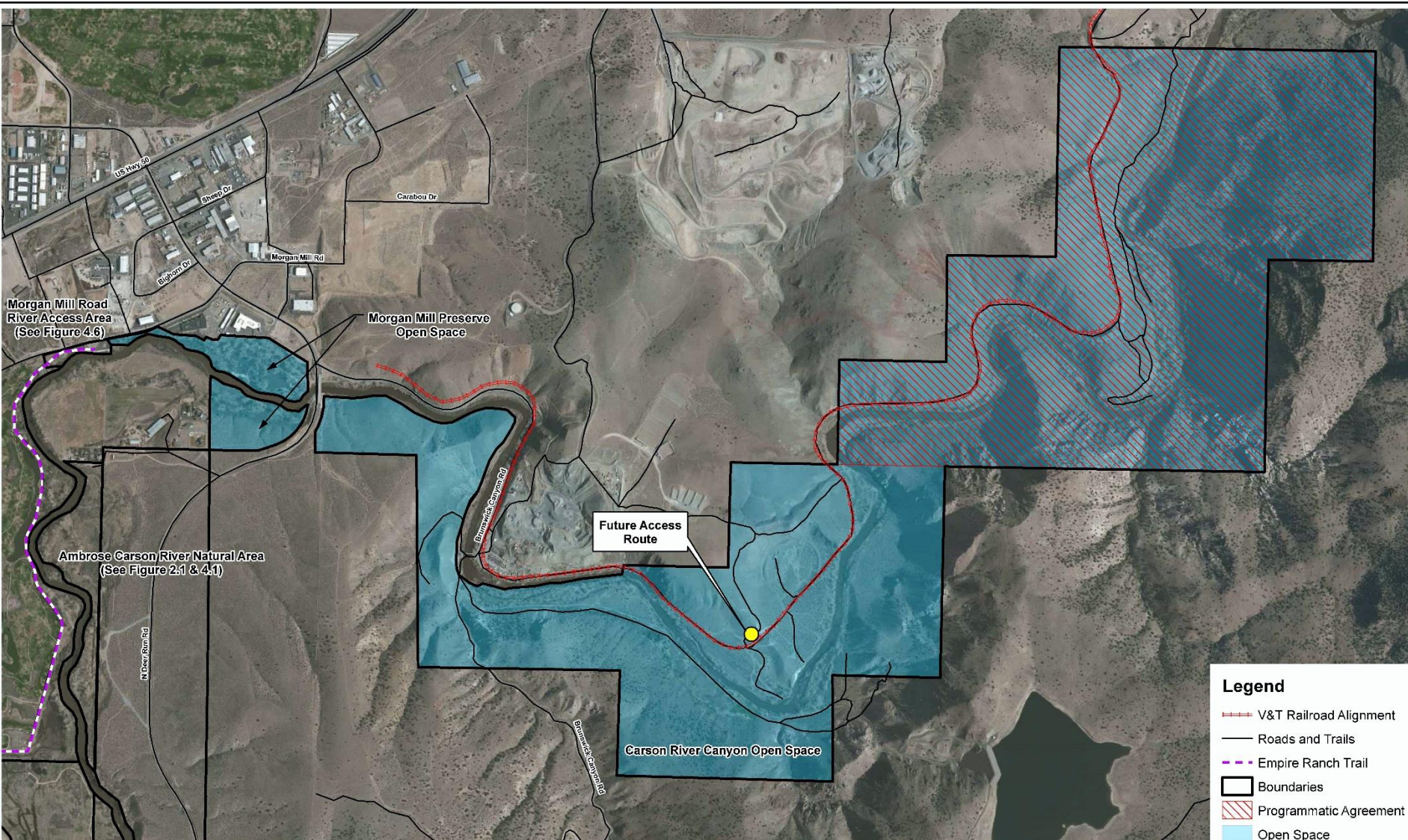
**Figure 2.3**  
**Silver Saddle Ranch, East Silver**  
**Saddle Ranch, And Mitigation Wetlands**  
 Carson City Parks, Recreation, & Open Space Department

0 1,000 2,000 Feet  
 Source: BING Maps Imagery



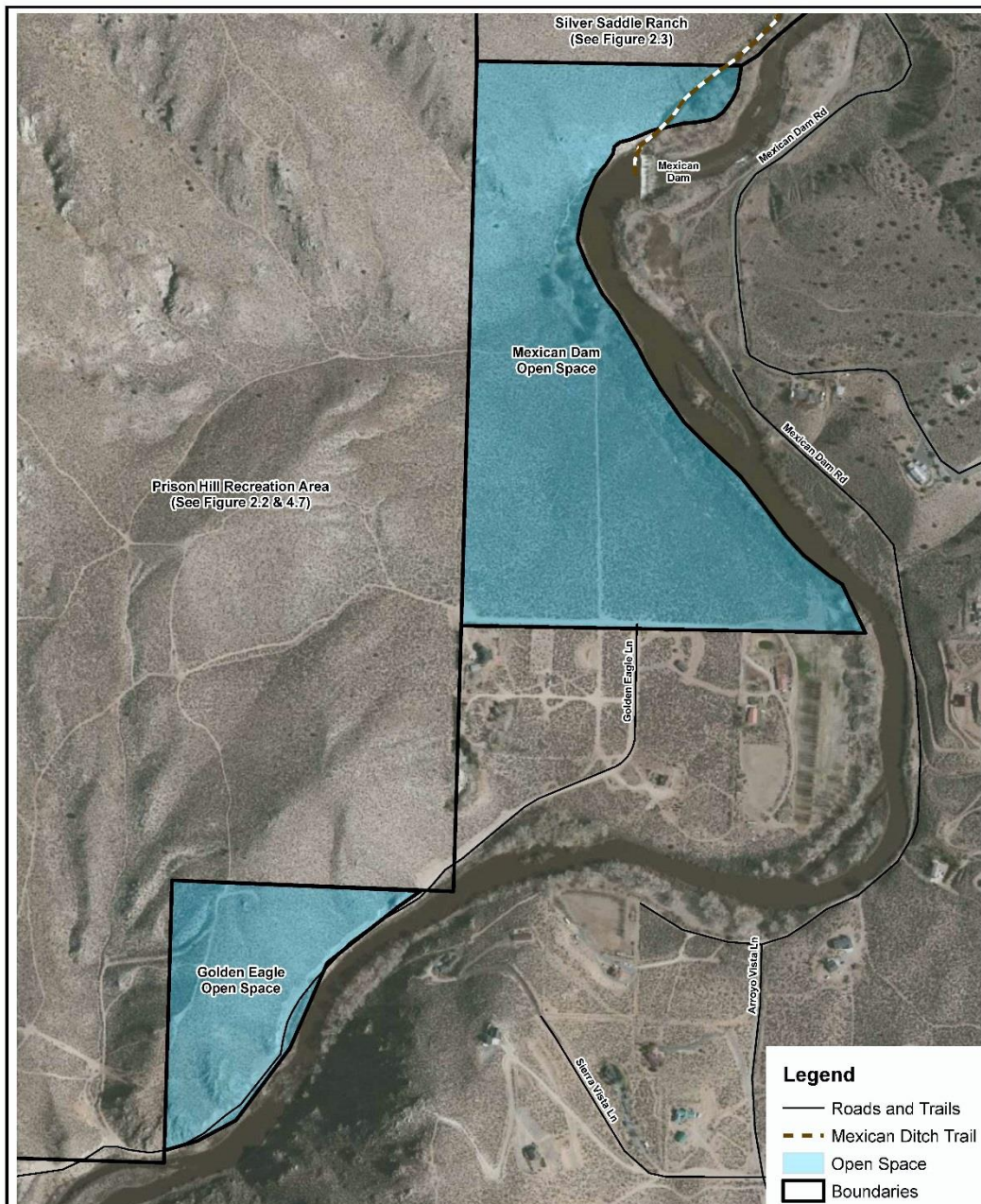






**Figure 3.1**  
**Carson River Canyon Open Space and Morgan Mill Preserve Open Space**  
Carson City Parks, Recreation, & Open Space Department





Date: 7/30/2014  
**RCI**  
 Resource Concepts Inc.

**Figure 3.2**  
**Golden Eagle & Mexican**  
**Dam Open Space**

Carson City Parks, Recreation, & Open Space Department





Date: 7/29/2014



**Figure 3.3**  
**Moffat Open Space**

Carson City Parks, Recreation, & Open Space Department

Source: BING Maps Imagery



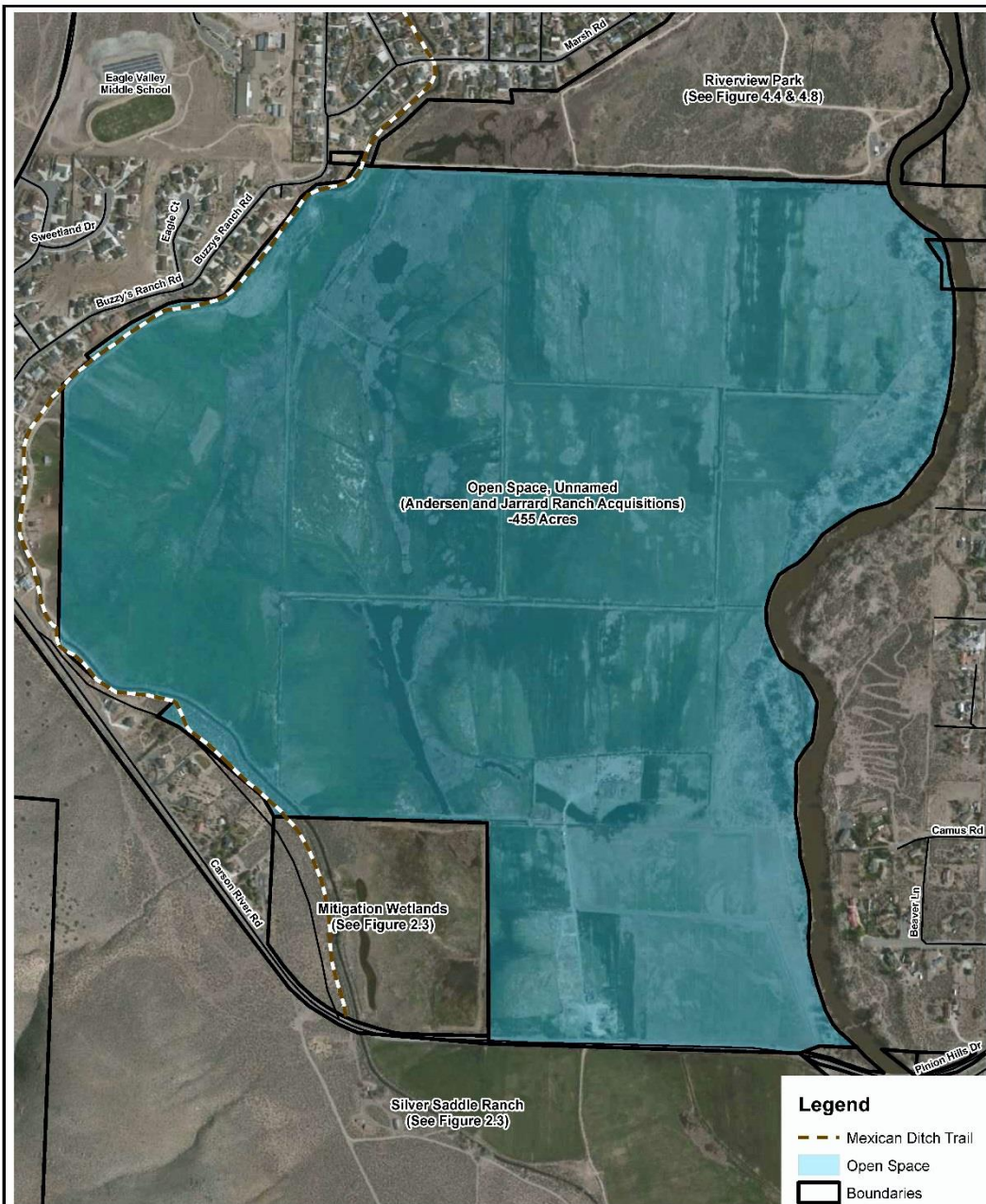


Date: 7/29/2014



**Figure 3.4**  
**Morgan Mill Preserve Open Space**  
 Carson City Parks & Recreation

0 250 500 Feet  
 Source: BING Maps Imagery



Date: 7/29/2014



**Figure 3.5**  
**Open Space, Unnamed**  
**(Andersen and Jarrard Ranch Acquisitions)**  
 Carson City Parks, Recreation, & Open Space Department

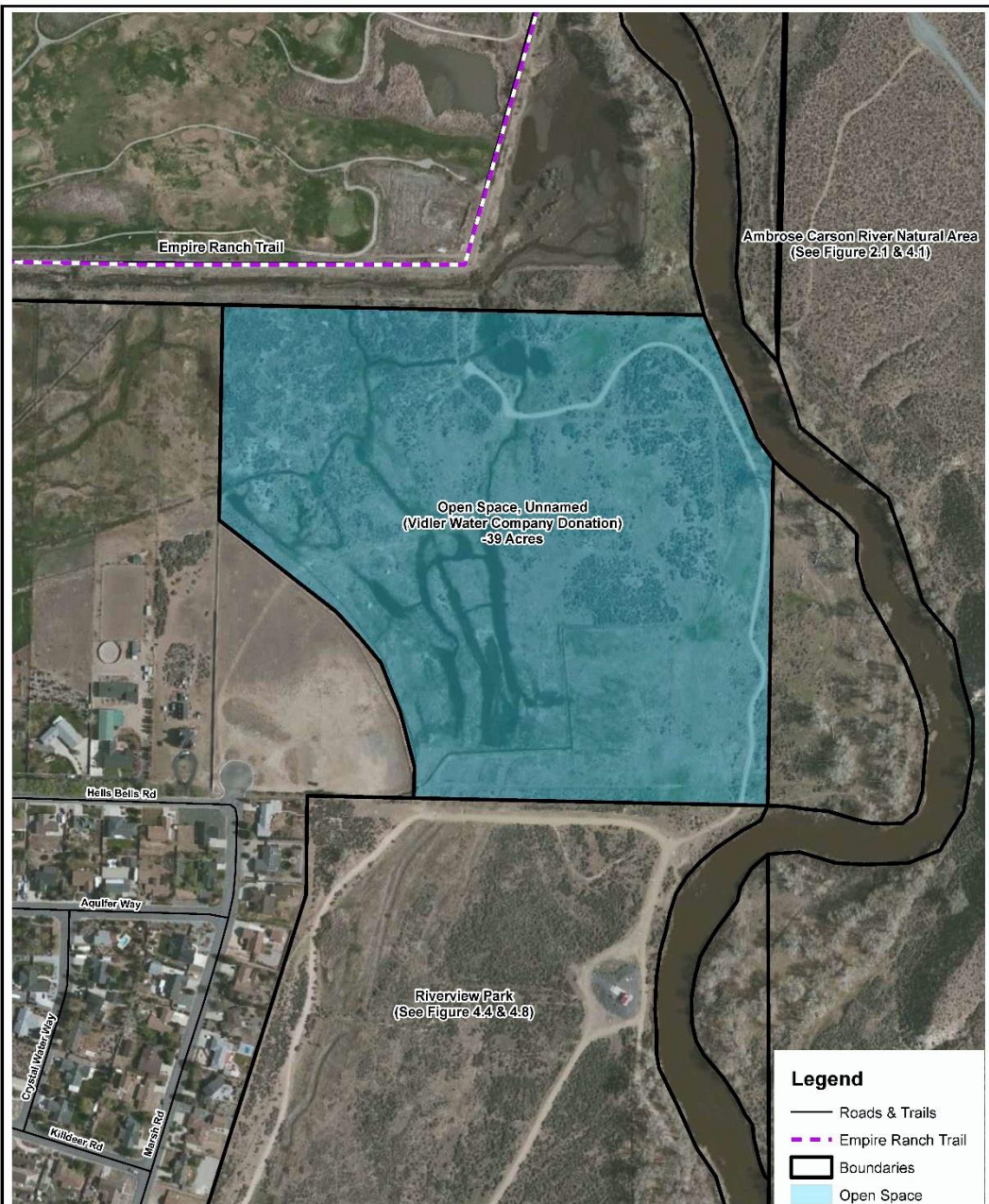
**Legend**

- Mexican Ditch Trail
- Open Space
- Boundaries
- Roads and Trails

0 500 1,000 Feet

Source: BING Maps Imagery





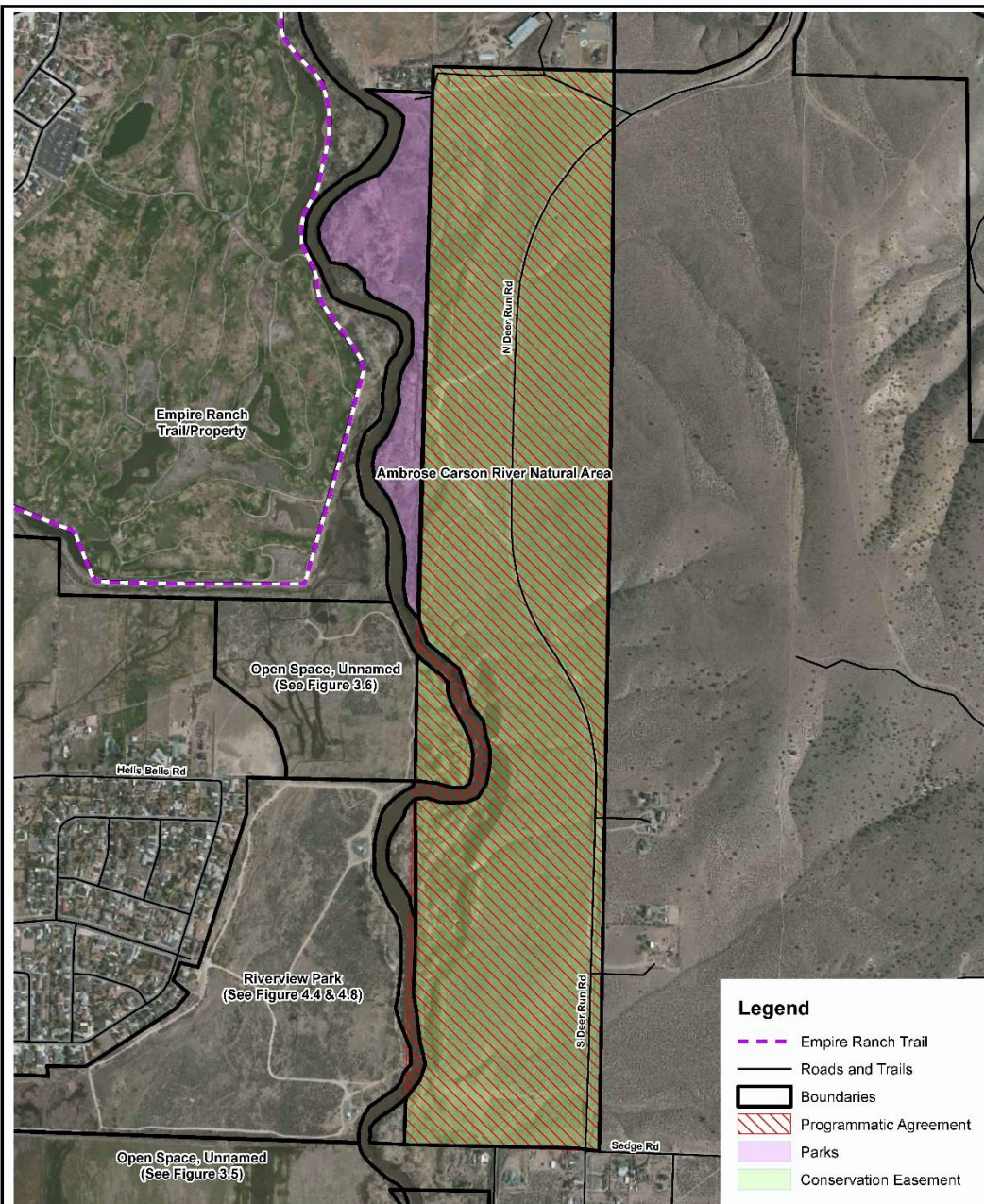
Date: 7/29/2014



N

**Figure 3.6**  
**Open Space, Unnamed**  
**(Vidler Water Company donation)**  
 Carson City Parks, Recreation, & Open Space Department





Date: 7/29/2014



**Figure 4.1**  
**Ambrose Carson River Natural Area**  
**Park and Conservation Easement Lands**  
 Carson City Parks, Recreation, & Open Space Department





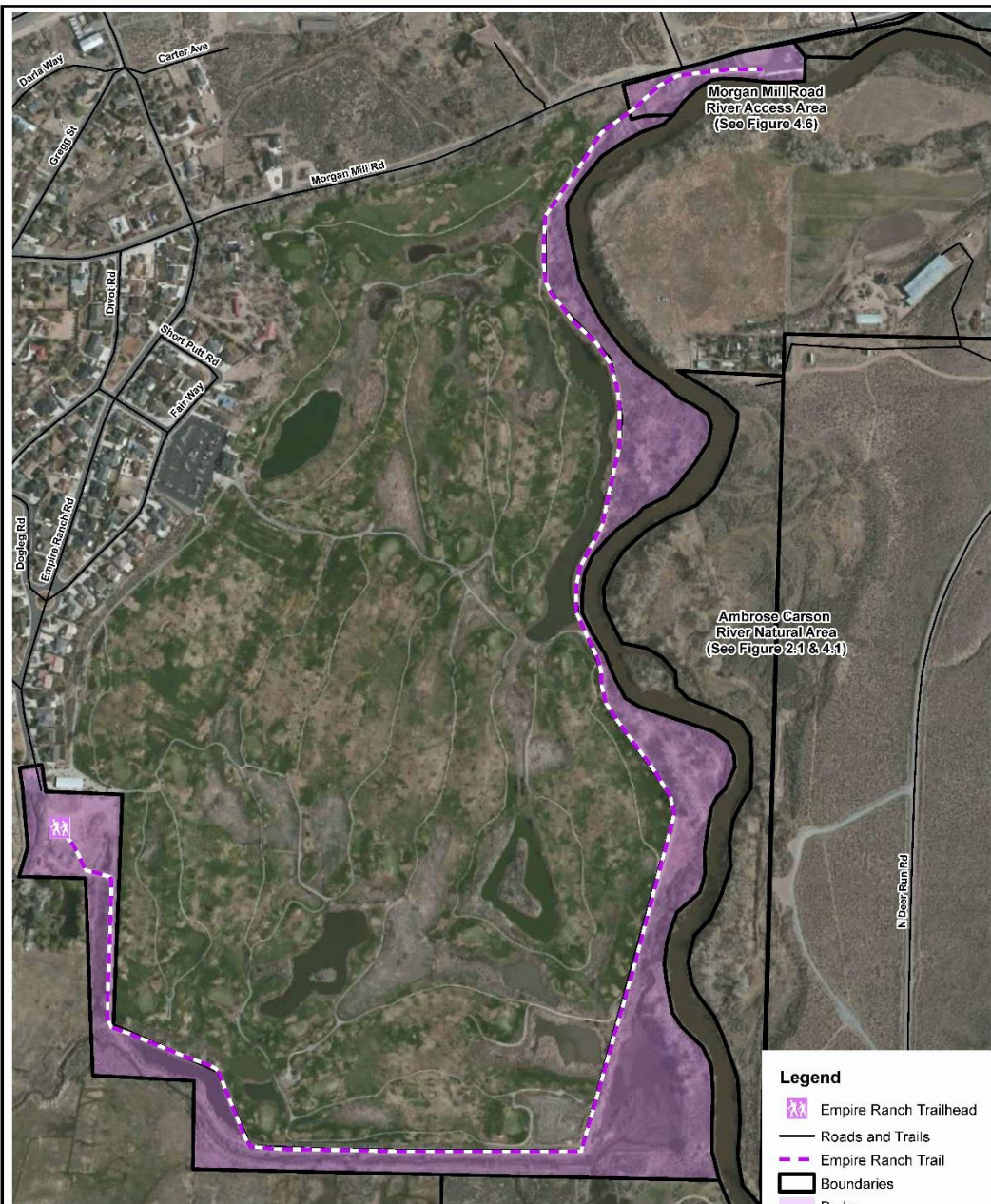
Date: 7/29/2014



**Figure 4.2**  
**Carson River Park**

Carson City Parks, Recreation, & Open Space Department





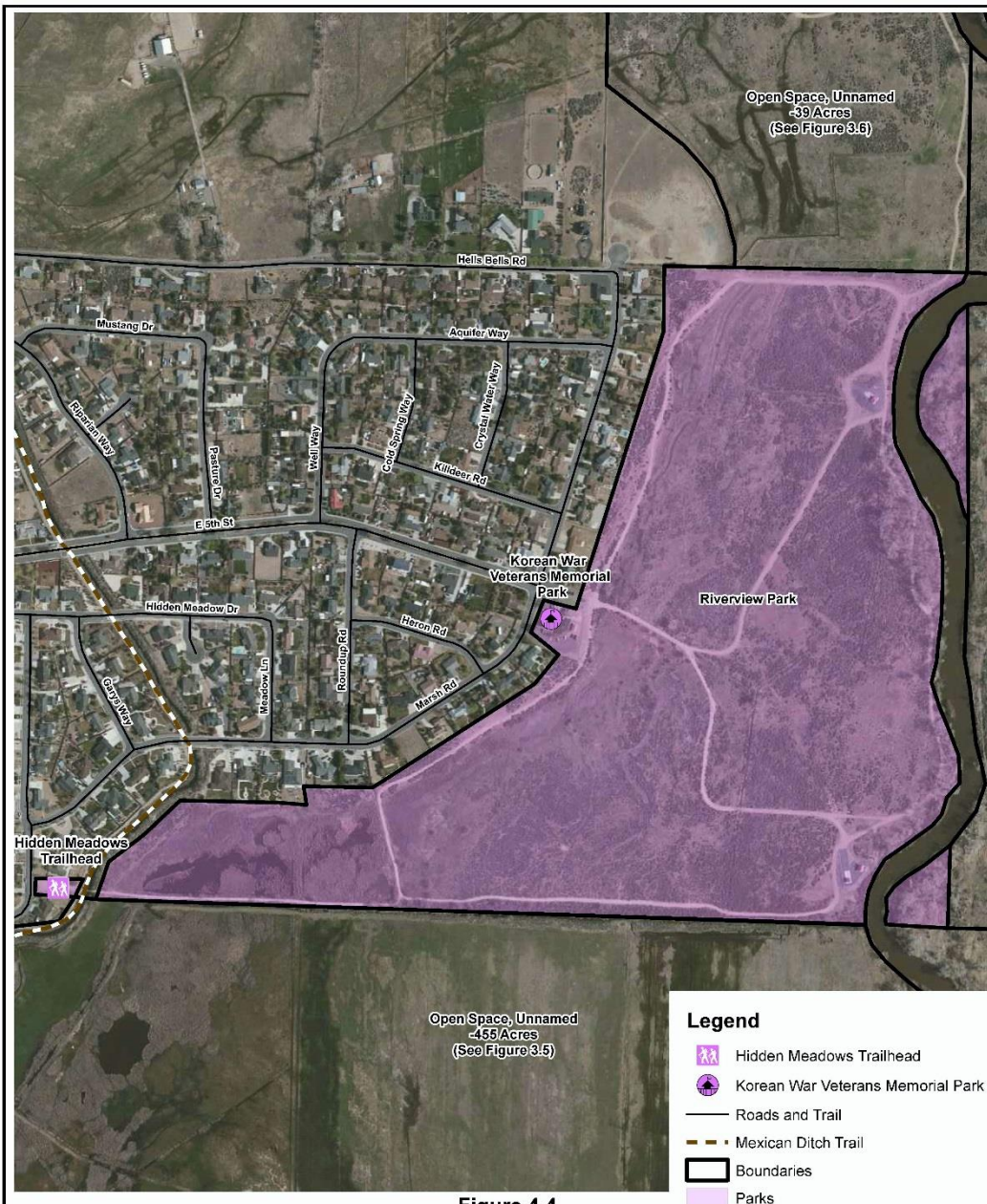
Date: 7/30/2014



**Figure 4.3**  
**Empire Ranch Trail &**  
**Morgan Mill Road River Access Area**  
 Carson City Parks, Recreation, & Open Space Department

0 500 1,000 Feet  
 Source: BING Maps Imagery





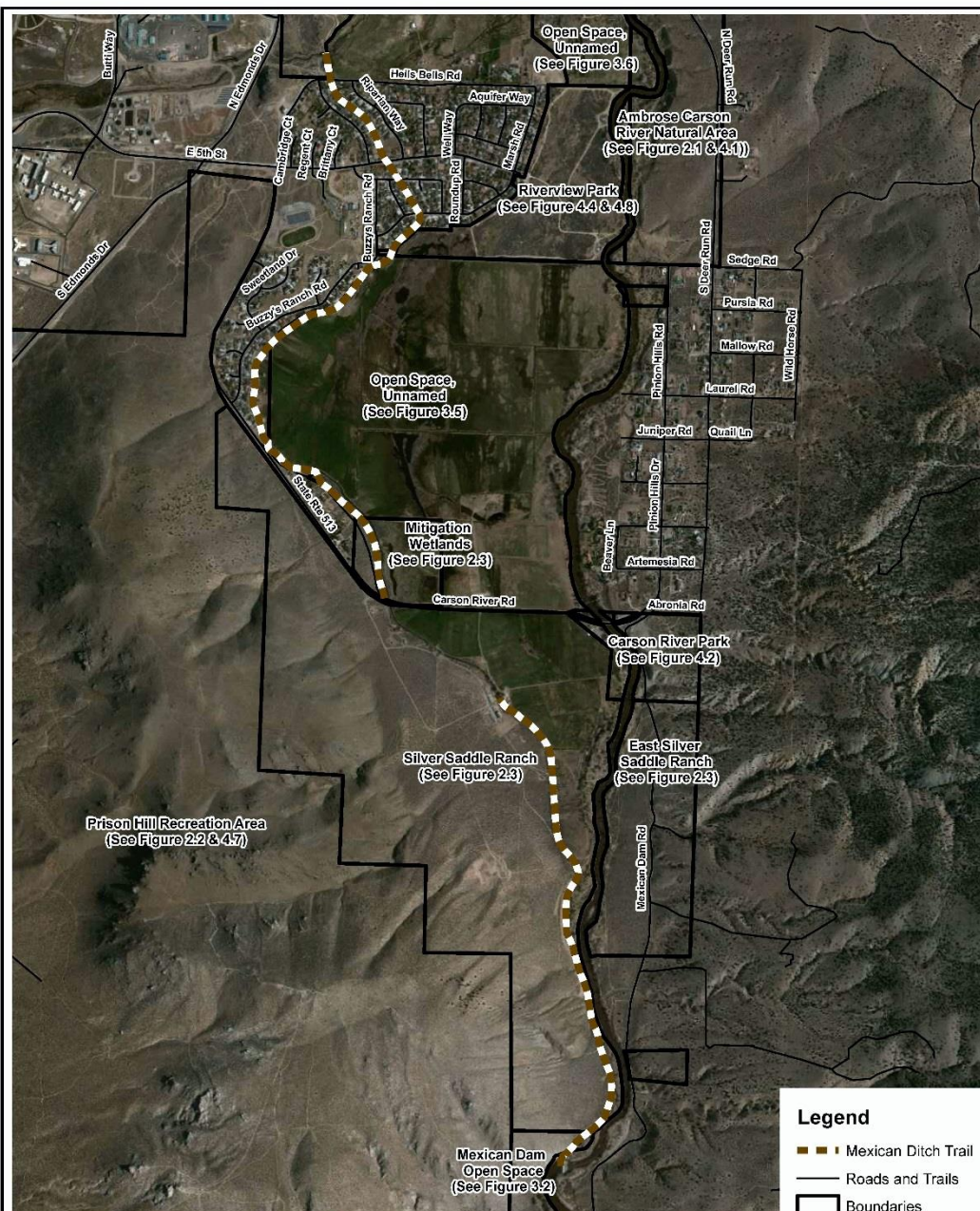
**Figure 4.4**  
**Riverview Park, Korean War Veterans Memorial Park, and Hidden Meadows Trailhead**

Carson City Parks, Recreation, & Open Space Department

Date: 7/29/2014







Date: 7/29/2014



**Figure 4.5**  
**Mexican Ditch Trail**  
Carson City Parks & Recreation

0 0.25 0.5 Miles

Source: BING Maps Imagery





Date: 7/29/2014

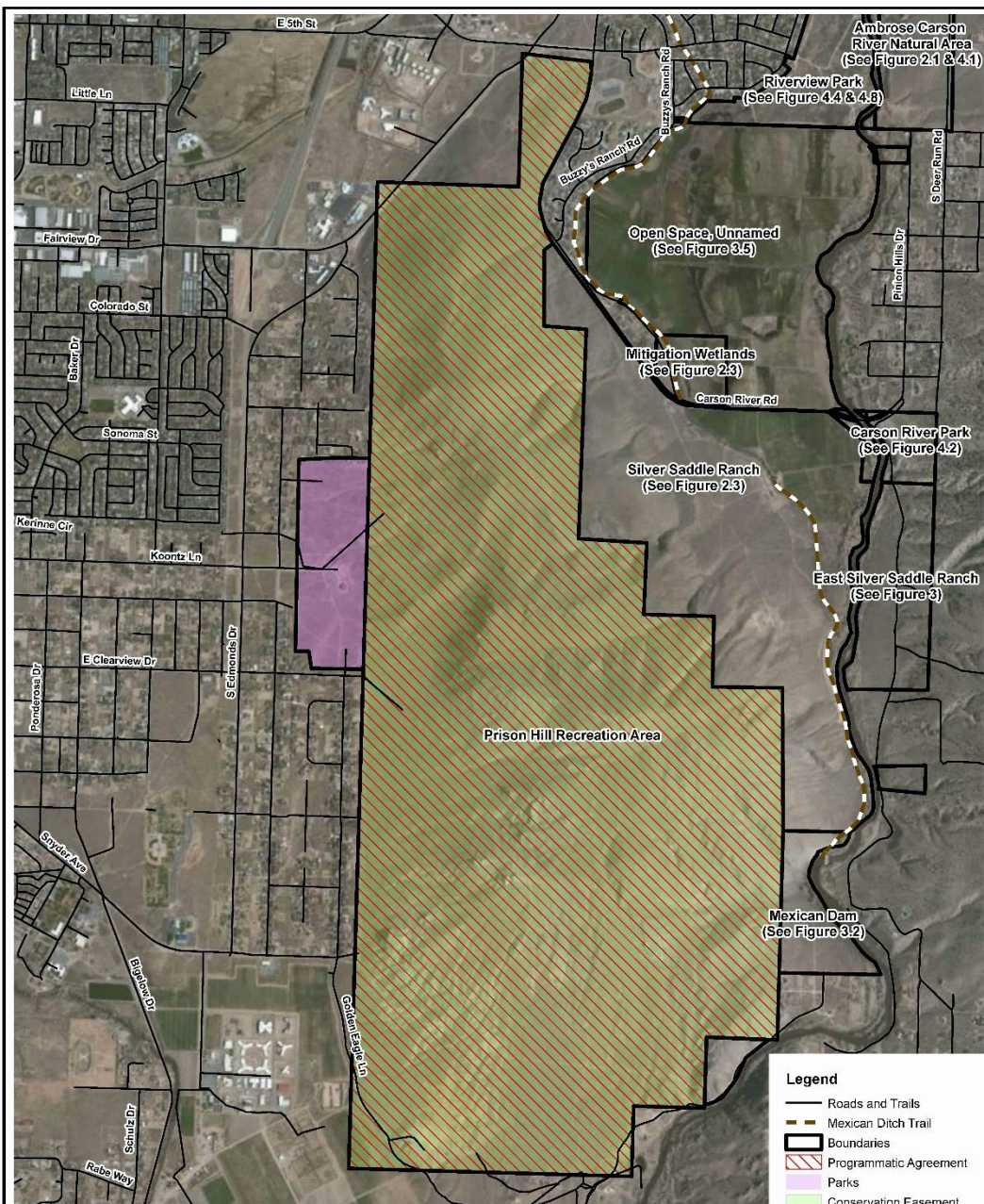


**Figure 4.6**  
**Morgan Mill Road River Access Area**  
 Carson City Parks & Recreation

0 100 200 Feet

Source: BING Maps Imagery





Date: 7/29/2014

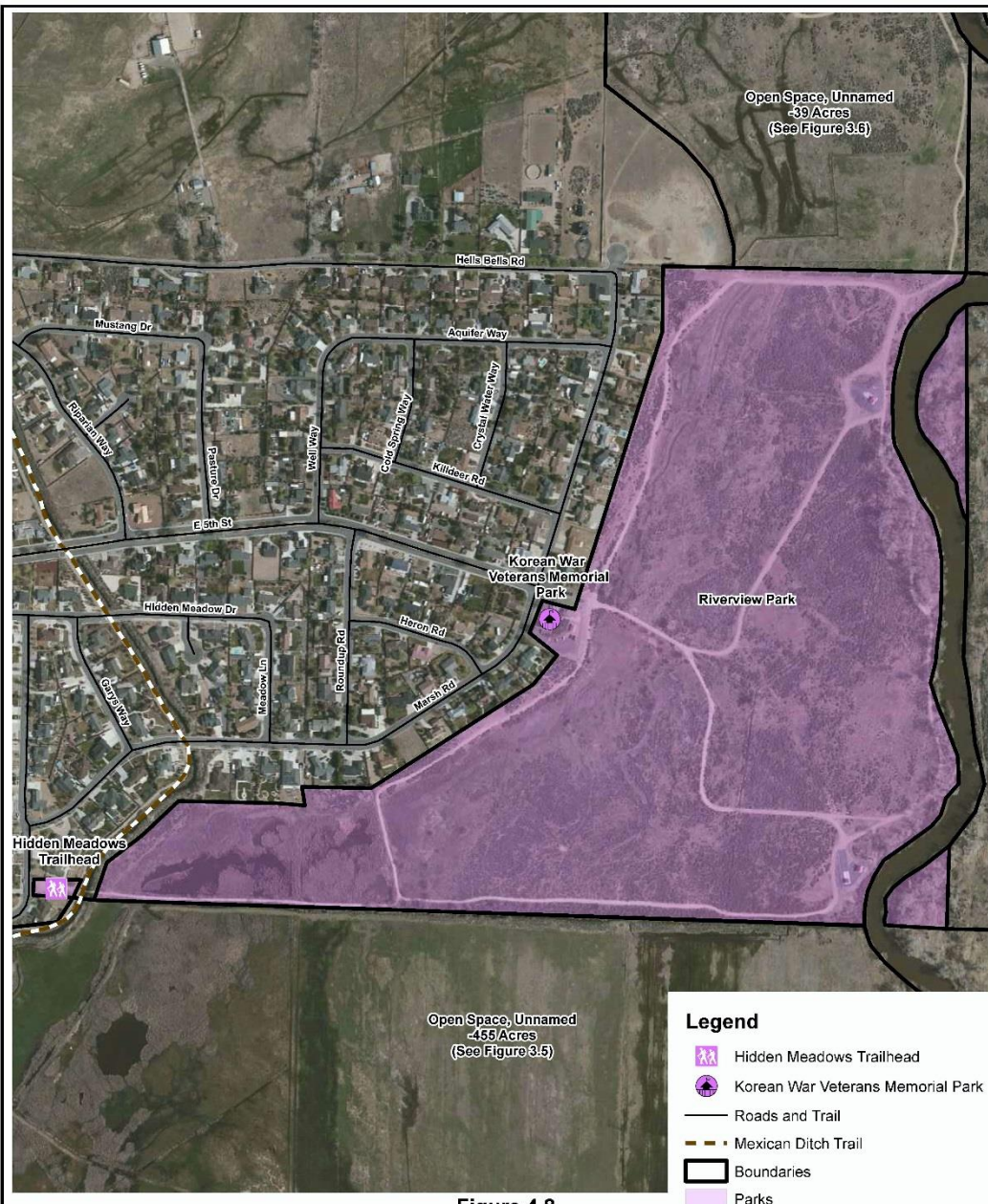


**Figure 4.7**  
**Prison Hill Recreation Area**  
 Carson City Parks, Recreation, & Open Space Department

0 2,000 4,000 Feet

Source: BING Maps Imagery





**Figure 4.8**  
**Riverview Park, Korean War**  
**Veterans Memorial Park,**  
**and Hidden Meadows Trailhead**

Carson City Parks, Recreation, & Open Space Department

Date: 7/29/2014

