



Medical Marijuana Program

Steve Gilbert, Program Manager
Medical Marijuana

Nevada Division of Public and Behavioral Health
Department of Health and Human Services



Medical Marijuana Program

Individual Patient Registry Program

- The program issues patient registry identification cards to Nevadans who meet the qualifications defined in NRS 453A.050.
- Individuals can apply for the registry and if found eligible, they are issued an identification card to show approval for use of the Cannabis plant for medicinal purposes.



Medical Marijuana Program

Medical Marijuana Establishment Program

- Medical marijuana establishments include
 - independent testing laboratories
 - cultivation facilities
 - facilities for the production of edible marijuana products or marijuana-infused products
 - medical marijuana dispensaries
- A medical marijuana dispensary is a business that supplies or dispenses marijuana or related supplies and educational materials to holders of valid registry identification cards.
- They will not be open to the public.



Medical Marijuana Program

Structure

With the passage of S.B. 374, the Medical Marijuana Program grew to be comprised of two authorized groups.

**Medical Marijuana
Cardholders**

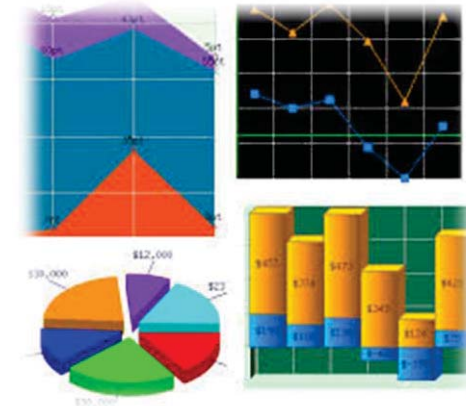
**Medical Marijuana
Establishments
(MME)**



Medical Marijuana Cardholder Program

Statistics

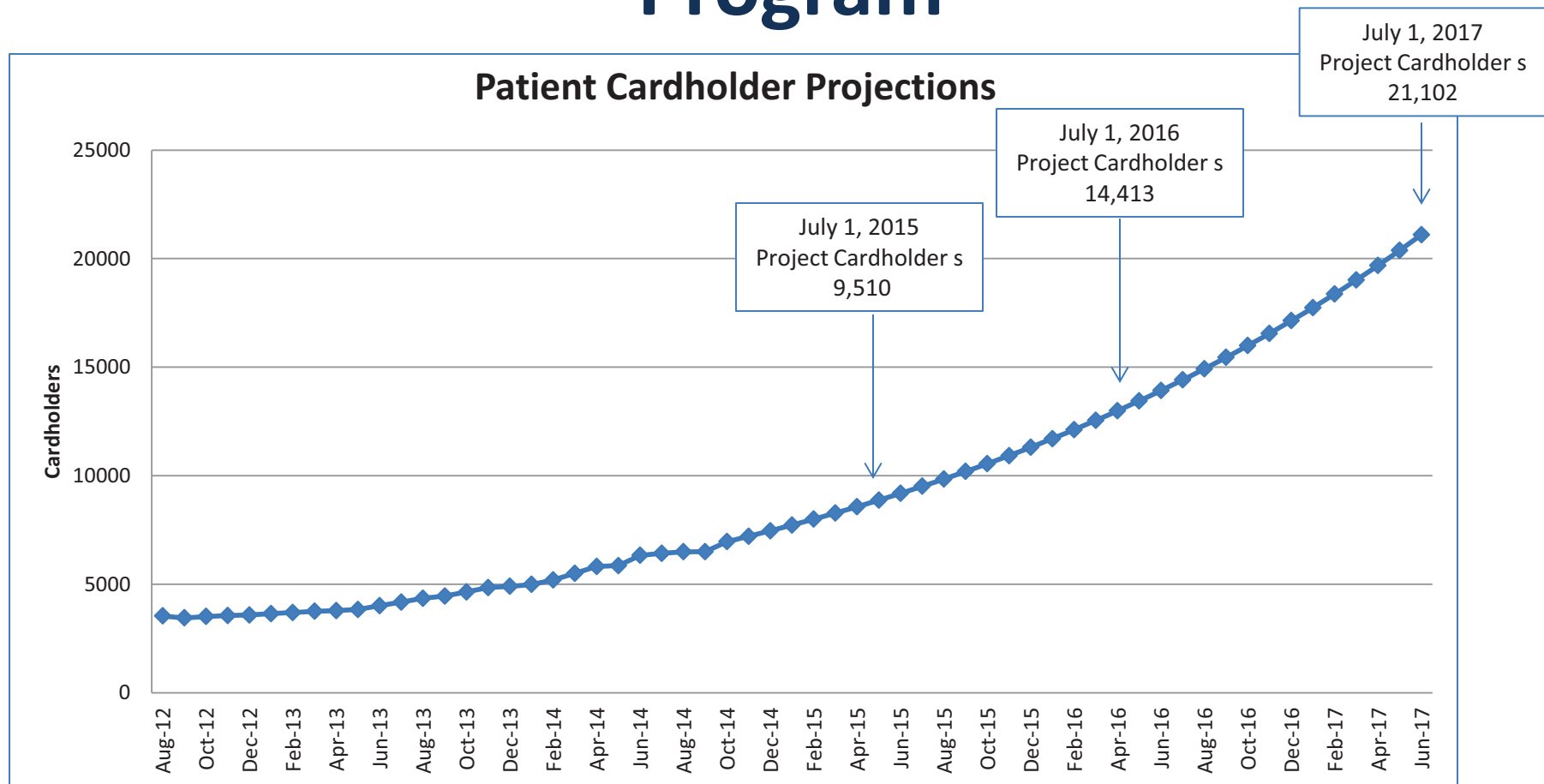
- Total number of active patient cards: 6,500
- Total number of active caregiver cards: 374
- Total number of active patient cardholders by region:
 - Clark County: 4,728 (73%)
 - Washoe County: 746 (11%)
 - Balance of State: 1,026 (16%)



Includes data through September, 2014



Medical Marijuana Cardholder Program





Medical Marijuana Establishment Applications

Total Number of Applications: 519

Total Applications By Establishment Type	
Dispensary	199
Cultivation	183
Production	119
Laboratory	18

The Division will be issuing provisional licenses to approved establishments in early November, 2014.



Dispensary Totals by County

County	Dispensaries Allocated	Number of Dispensary Applications Received	Number of Provisional Licenses Issued by the Division	
Carson	2	11	2	Total allocated will be issued
Churchill	1	1	1	Total allocated will be issued
Clark	40	135	40	Total allocated will be issued
Douglas	1	0	0	No applications received
Elko	1	0	0	No applications received
Esmeralda	1	0	0	No applications received
Eureka	1	0	0	No applications received
Humboldt	1	0	0	No applications received
Lander	1	0	0	No applications received
Lincoln	1	0	0	No applications received
Lyon	1	0	0	No applications received
Mineral	1	0	0	No applications received
Nye	1	6	1	Total allocated will be issued
Pershing	1	0	0	No applications received
Storey	1	1	1	Total allocated will be issued
Washoe	10	45	10	Total allocated will be issued
White Pine	1	0	0	No applications received
Total	66	199	55	



Medical Marijuana Establishment (MME) Program

Local Government Role

- Clarify local zoning and licensing requirements for establishments.
- Have authority to supplement the Division's regulations.
- Provide first line of response for law enforcement needs and criminal activity.
- Work with the Division on complaints and investigations, as applicable.



Medical Marijuana Establishment Program

Unified Roles

- In a county with a population of 100,000 or more, the Division shall ensure that not more than 25 percent of the total number of dispensaries that may be certified in the county, are located in any one local governmental jurisdiction within the county (per NRS 453A.326).
- The board of county commissioners of the county may increase the percentage if it determines that to do so is necessary to ensure that the more populous areas of the county have access to sufficient distribution of marijuana for medical use (per NRS 453A.326).



Economic Impacts of Medical Marijuana

Expected Benefits Include:

- Stimulation of skilled employment opportunities for the industry.
- Reciprocity sales for nonresident medical marijuana patients.
- Increased Nevada state tax generation and related benefits.
- Revenue from applications of Medical Marijuana Establishments.



Medical Marijuana Establishment Applications

According to NRS, the maximum number of dispensaries allowed in Nevada is population-driven and limited to 66:

40 in Clark County

10 in Washoe County

2 in Carson City

1 each in the other counties

The number of MMEs that are not dispensaries is not limited in statute.



Reciprocity Sales for Nonresident Medical Marijuana Patients

Under Nevada Revised Statute (NRS) 453A, medical marijuana patients from other States are eligible to purchase their needed medical marijuana in Nevada.

In 2013, California residents comprised 33% of the visitors to Las Vegas*. California has approximately 77,000 medical marijuana patient cardholders**.

*Las Vegas Visitor Profile Study 2013

**cumulative count from CA Dept. of Public Health



Revenue from Medical Marijuana Establishment Application Revenue

Per S.B. 374, 25% of Excise Tax to DPBH

Based on projected patient cardholders, and limits on amount of medical marijuana that can be purchased, the MME Program has budgeted the following for its share of the total excise tax:

- FY16: \$1,042.975
- FY17 \$1,580,815



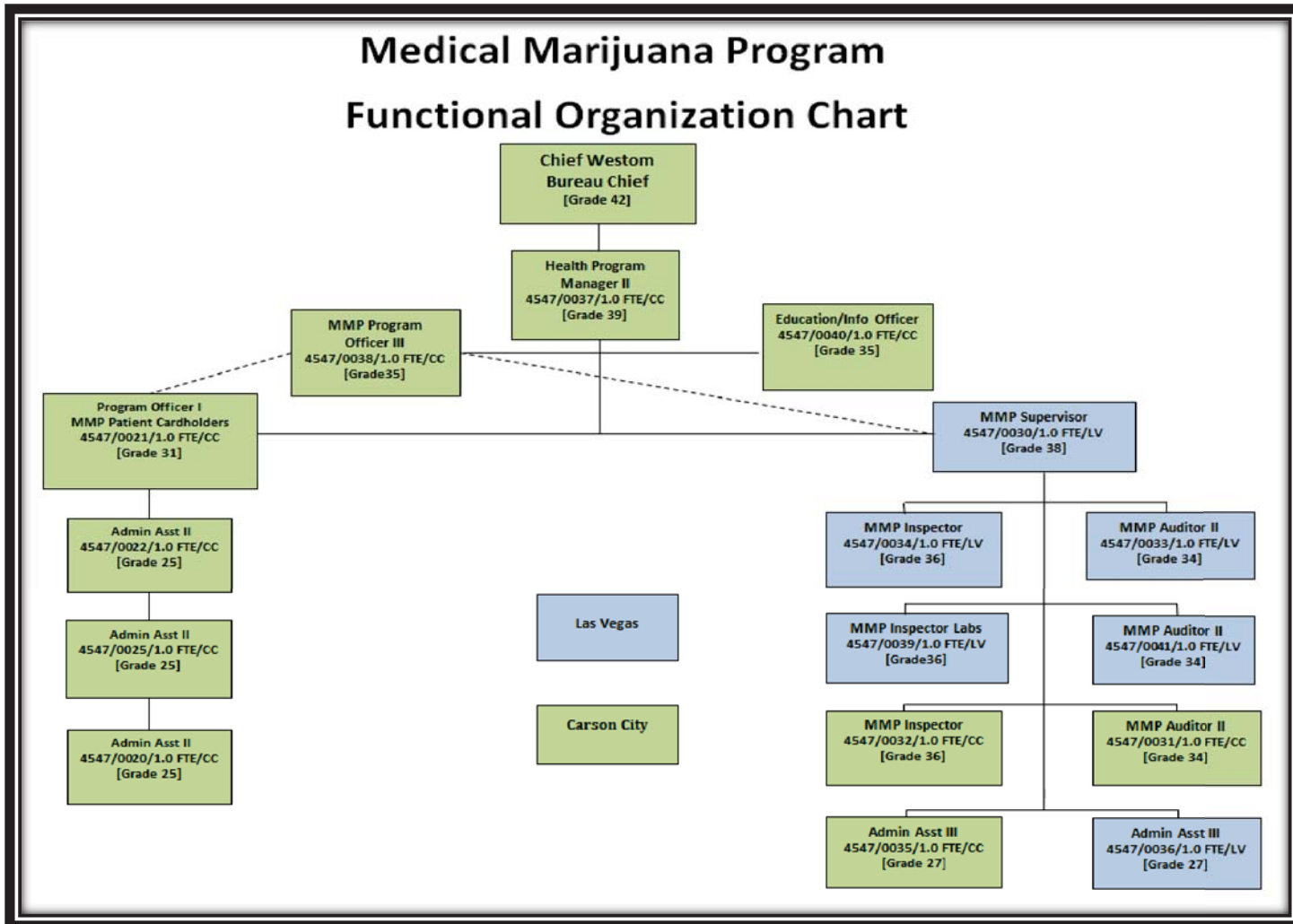
Revenue from Medical Marijuana Establishment Application Fees

Revenue generated from MME fees

- Pay back the costs of the Division in carrying out the provisions of NRS 453A.320-370.
- Excess fee revenue is paid to the State Treasurer to be deposited to the credit of the State Distributive School Account in the Nevada General Fund.



Medical Marijuana Program Functional Organization Chart





Medical Marijuana Program Contacts

– **Chad Westom, Bureau Chief**

775-684-4155

cwestom@health.nv.gov



– **Steve Gilbert, Program Manager II**

775-684-4162

sfgilbert@health.nv.gov



Medical Marijuana Program



Questions

