

Van Sickle Bi-State Park: *A Partnership*

Nevada Division of State Parks
California Tahoe Conservancy
Nevada Division of State Lands



EXHIBIT L -TAHOE
Document consists of 13 slides.
Entire Exhibit Provided
Meeting Date: 03-19-12

A Park is Born



California Becomes a Partner

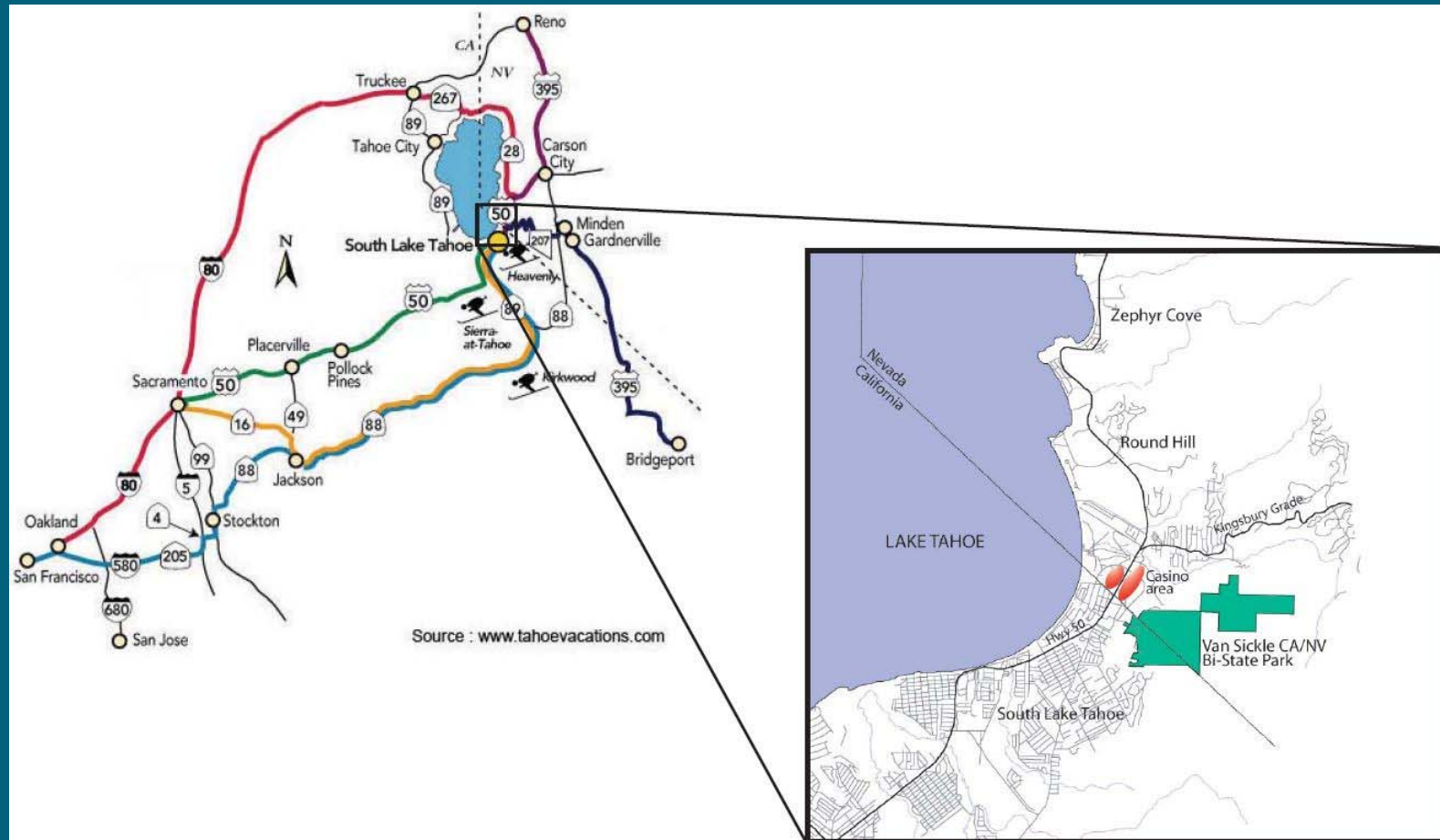


The Lake Tahoe Environmental Improvement Program

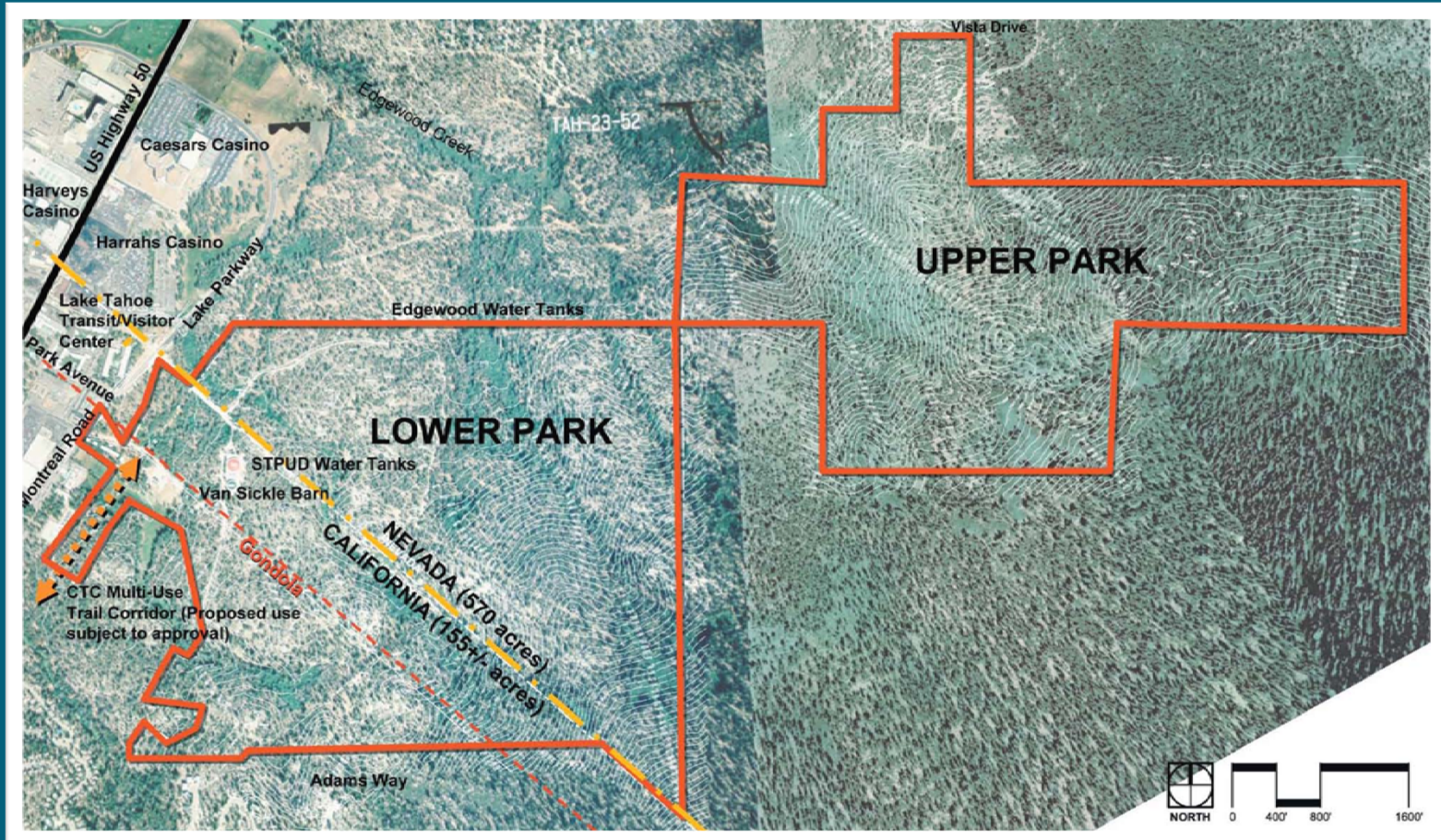
The Nevada Division of State Lands, through the Nevada Tahoe Resource Team, is part of a network of agencies and groups working in the Tahoe Basin to implement the Lake Tahoe Environmental Program (EIP). The EIP identified over \$900 million in projects and programs needed to improve the environment of Lake Tahoe.

EIP funds paid for the majority of the planning and development of facilities at Van Sickle Bi-State Park.

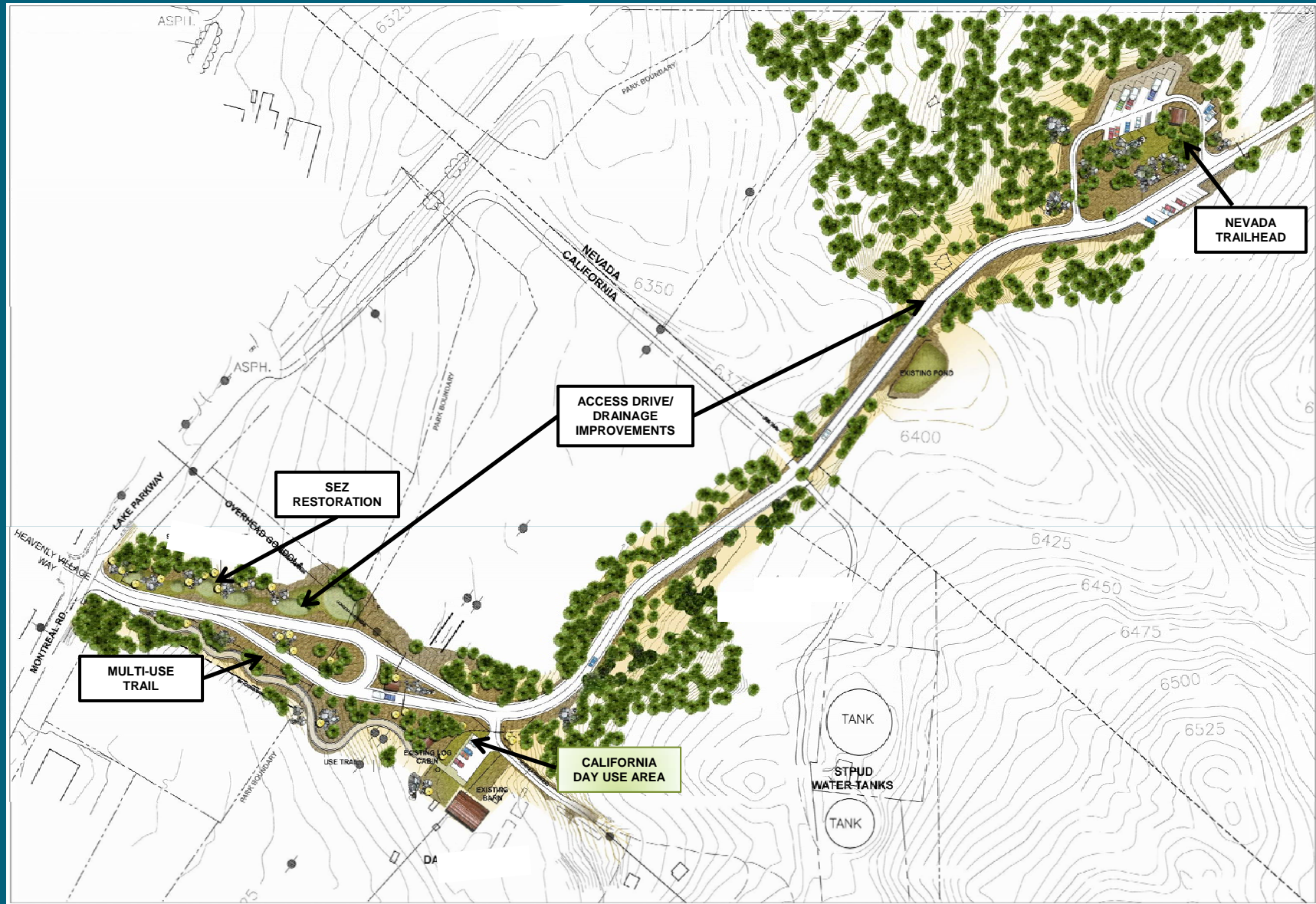
Vicinity Map



Park Boundary



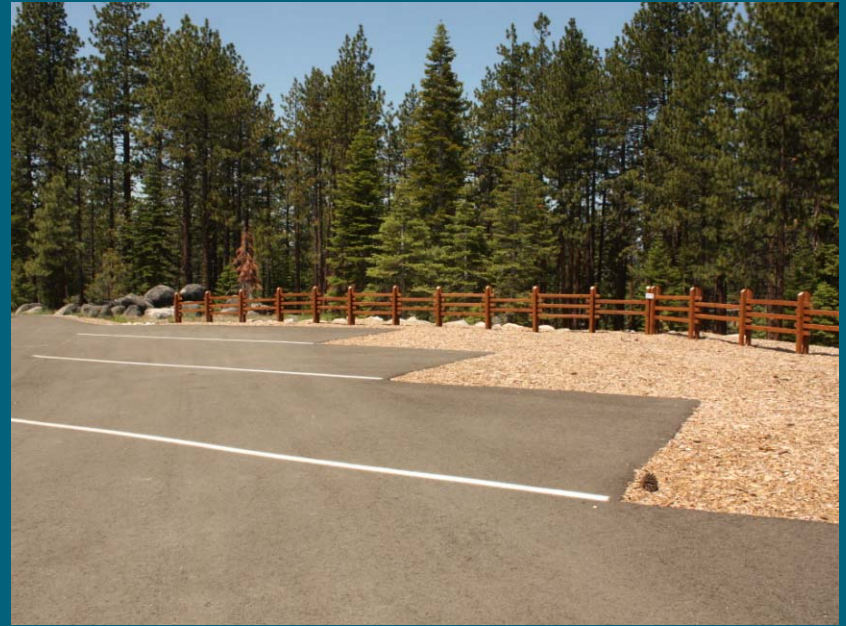
Phase 1 Development Plan



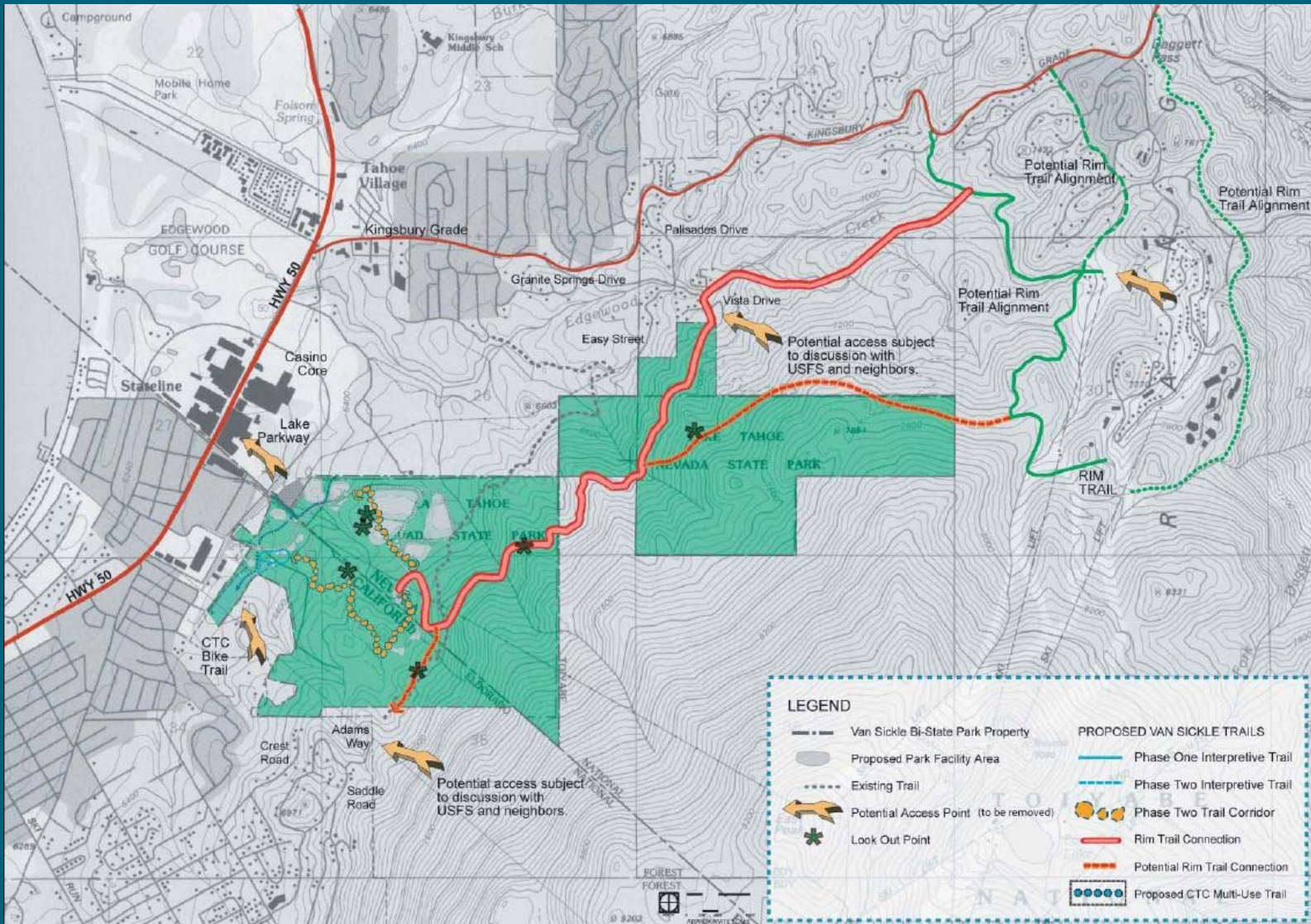
Phase 1 Development – Park Entry



Phase 1 Development – Nevada Trailhead



Trails Plan



Park Vistas



Partners in the Park

- The Tahoe Rim Trail Association has obtained a grant from the Van Sickle Foundation to fund Park operations for five years.
- The Tahoe Fund has provided a grant to assist the Tahoe Conservancy with Park operations.

It Takes Visionaries

