



California Department of Transportation

Transportation Planning in the Lake Tahoe Basin

Jeff Pulverman, District 3 Deputy Director
Division of Planning & Local Assistance
January 30, 2012

EXHIBIT F - TAHOE
Document consists of 10 slides.
Entire Exhibit provided.
Meeting Date: 01-30-12



Caltrans' Role in the Lake Tahoe Basin

- Caltrans manages 64.1 centerline miles, 155 lane miles in the Tahoe Basin
- Approximately 55,000 vehicles and 884,000 miles per day driven on the California SHS
- California State Highways serve as community main streets and primary transportation links

Caltrans' Tahoe Basin Priorities

- ✓ Highway system maintenance & operations
- ✓ Completion of Environmental Improvement Program (EIP) commitments
- ✓ Participation in the Tahoe regional transportation planning process

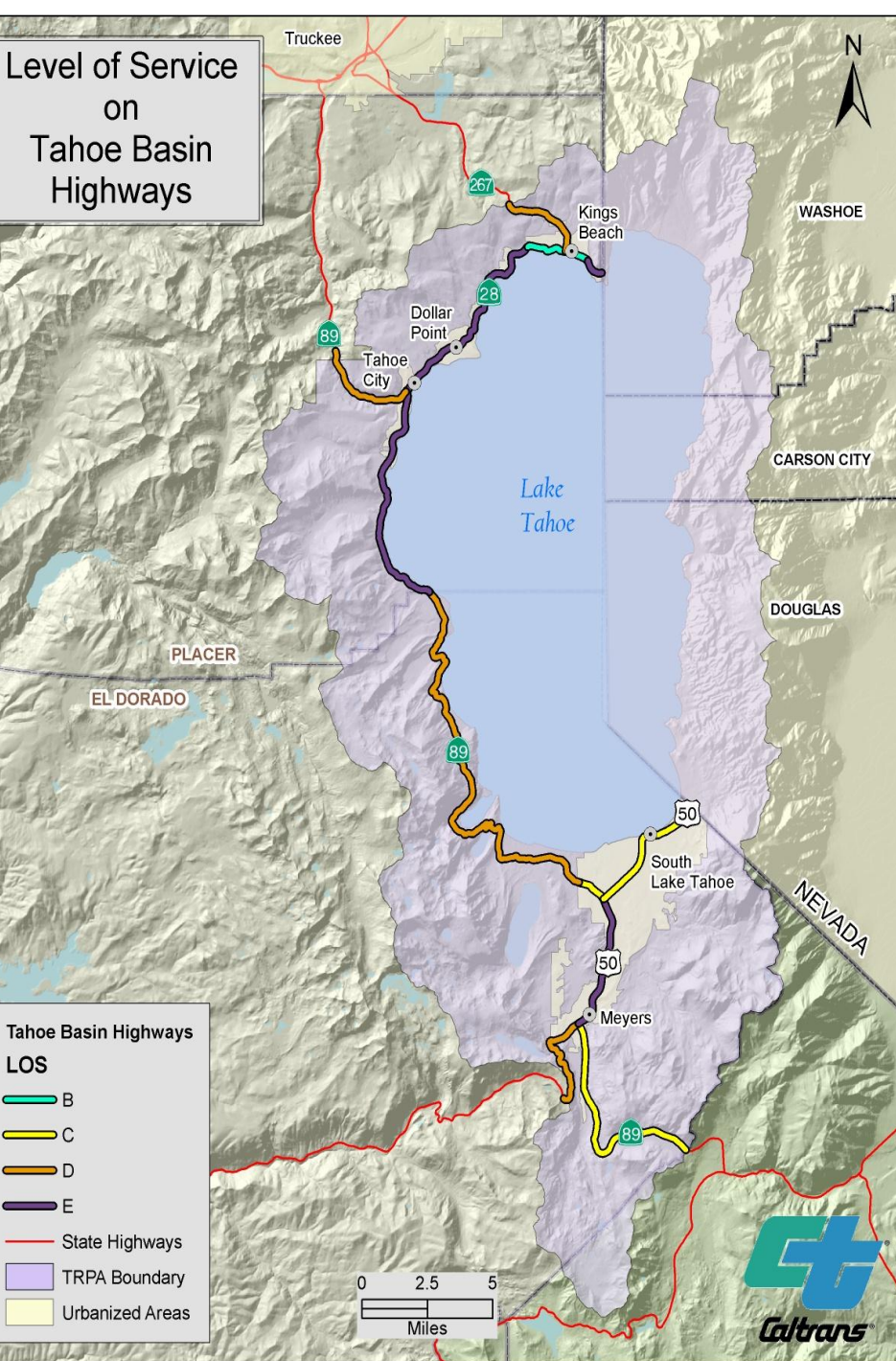
Environmental Improvement Program (EIP)

- Caltrans' project emphasis involves storm water treatment
- Completed or in construction: \$223M in projects
- 9 Projects (\$260M) in development
- 29 miles storm water treatment completed

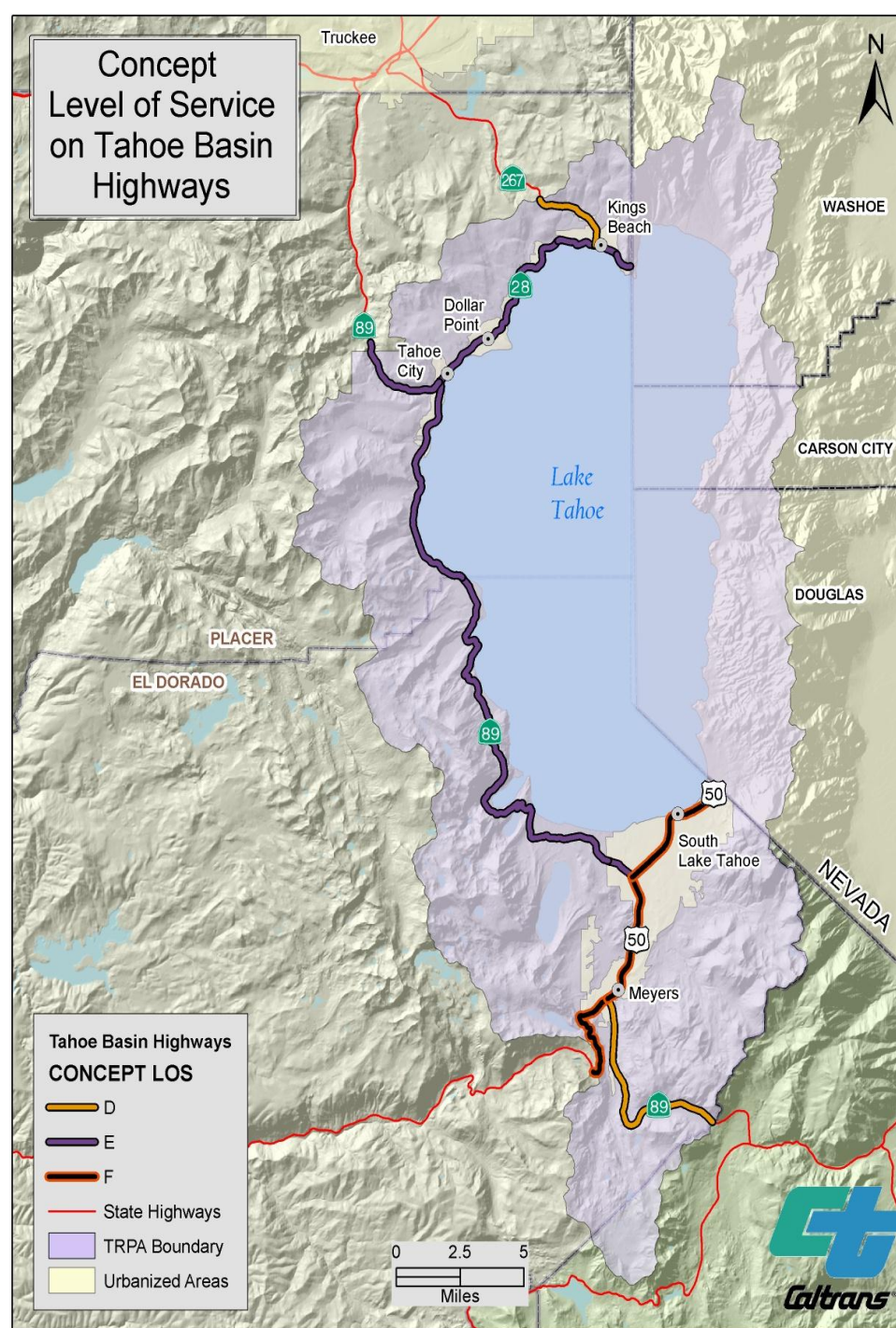
Caltrans System Planning Activities

Segment	Route	Average Annual Daily Traffic	Current Level of Service	Concept Level of Service	Concept Facility
Junction SR 89 to Estates Dr.	28	15,200	E	E	2C
Estates Dr. to Chipmunk St.	28	16,100	B	E	2C/4C
Chipmunk St. to Nevada Stateline	28	13,200	E	E	2C
Brockway Summit to SR 28	267	12,120	D	D	2C
Alpine/El Dorado County Line to US 50	89	4,500	C	D	2C
Junction Route 50 to Camp Richardson	89	16,900	C	E	4C
Camp Richardson to Placer County line	89	4,500	D	E	2C
El Dorado/Placer County line to SR 28	89	15,730	E	E	2C
SR 28 to TRPA Boundary	89	13,440	D	E	2C
Echo Summit to SR 89 South	50	9,200	D	F	2C
SR 89 South to Luther Pass Road	50	20,000	E	F	2C, 4.23 miles 5C, 0.60 miles
SR 89 North to Nevada Stateline	50	36,500	C	F	4C with 2-way left turn lane

Level of Service on Tahoe Basin Highways



Concept Level of Service on Tahoe Basin Highways





Key SHS Improvement Projects—

TMPO, TTD, & Caltrans partnering to improve the SHS

- SR 89 Realignment Project
- Adaptive Signalization Project (Highway 50)
- US 50/South Shore Community Revitalization



Caltrans' Complete Streets Policy

- Consider Complete Streets Directive
- Recognizes importance of complete streets
- All projects consider Complete Streets
- Needed: Complete Streets Implementation Strategy for the Tahoe Basin



Caltrans Transportation Planning Grants

- Environmental Justice
- Community-Based Transportation Planning
- Partnership Planning
- Statewide or Urban Transit Planning Studies
- Rural or Small Urban Transit Planning Studies
- Transit Planning Student Internships
 - Example grant funded project: Bi-state/ US 50 Transportation Improvement & Community Planning Project



Contact:

Jeff Pulverman

District 3 Deputy Director

Division of Planning and Local Assistance

jeff_pulverman@dot.ca.gov

(530) 741-4337