

# Nevada

## Differential Response Program

**EXHIBIT E - ChildWelfare**  
Document consists of 23 pages.  
Entire document provided.  
Meeting Date: 04-04-12

A Collaborative Pilot Project  
Between Public Child Welfare  
Agencies and Family Resource  
Centers (Community Based  
Service Providers)

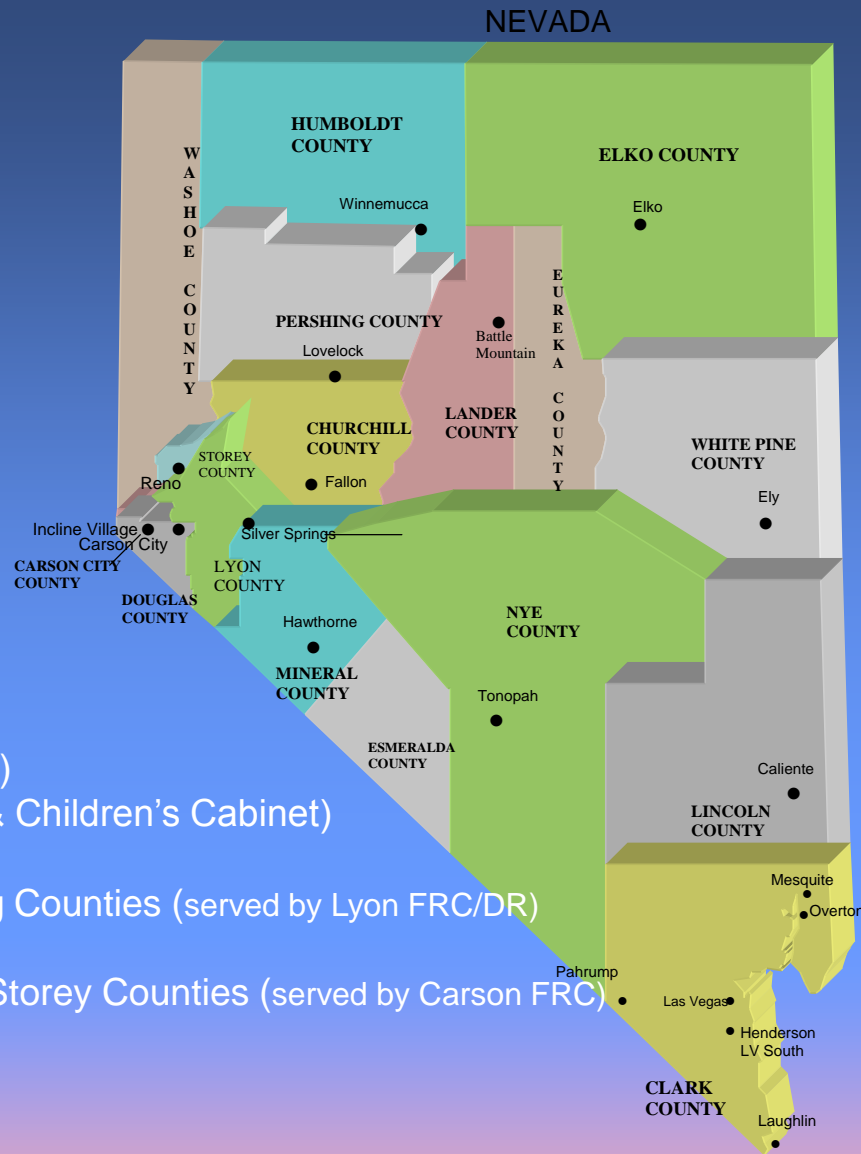


# Differential Response

- An approach to ensuring child safety by expanding the ability of child welfare to respond to reports of child abuse and neglect by creating partnerships with community based organizations that can help support families that are in need and before further problems can develop.



Families referred to Differential Response “are the subject of reports of child abuse and/or neglect which have been determined by the agency as likely to benefit from early intervention through the assessment of their unique strengths, risks and individual needs, rather than the more intrusive approach of investigation.”



DR. Programs:

Clark Urban (4 programs)

Washoe (Washoe FRC & Children's Cabinet)

Elko County

Lyon, Mineral & Pershing Counties (served by Lyon FRC/DR)

Churchill County

Carson City, Douglas & Storey Counties (served by Carson FRC)

Pahrump

# Differential Response Partners

- Department of Health and Human Services  
Grants Management Unit
- Family Resource Centers
- Division of Child and Family Services,  
Administration
- Clark County Department of Family Services
- Washoe County Department of Social Services
- Division of Child and Family Services Rural  
Region office



# Family Resource Centers

- Established in Nevada Revised Statute 430A in 1995
- Funded by State General Funds
- Statewide coverage through 18 service areas
- Each FRC required to provide information and referral and case management.
- Differential Response has created a stronger partnership with the Child Welfare System



# Department of Health and Human Services Grants Management Unit

- Administrative Unit within the Department of Health and Human Services Director's Office
- Administers and monitors grants to local, regional and statewide programs, including FRCs.
- Funding for Differential Response is included in the FRC budget which is administered by the Grants Management Unit.





# SFY 12 Program Funding

(Funding amounts have not changed significantly since 2007)

## Family Resource Centers

- \$1,460.737 (\$1,289,062 state general fund and \$171,675 from other GMU funding)
- 20 FRCs
- Allocation funding based on population, poverty rates and child abuse and neglect reports in service area

## Differential Response

- \$1,335,268 (\$1,209,268 state general fund and \$120,000 from Casey Family Programs)
- 11 FRC Differential Response Programs
- \$15,000 for DR training
- Funding based on number of staff at each site.

# Casey Family Programs Funding for Differential Response

Casey funding has supported the evaluation process, training and technical assistance and direct services.

<u>Casey Funding</u>	<u>% of Total DR Budget</u>
2007 - \$130,000	61%
2008 - \$115,000	14%
2009 - \$225,000	17%
2010 - \$140,000	11%
2011 - \$120,000	9%
2012 - \$120,000	9%



# Nevada's Differential Response Model

- Child Welfare Agency staff review report of child abuse/neglect and make determination whether report is transferred to Differential Response (DR) or is responded to in the traditional investigative manner.
- Only priority 3 reports are assigned to DR - e.g.
  - Educational Neglect
  - Environmental Neglect
  - Physical Neglect
  - Medical Neglect
  - Improper Supervision



# History

- June 2006 – meeting with FRC representatives and administrators from the three child welfare agencies (Clark, Washoe and DCFS)
- Sept. 2006 established a steering committee with representatives from all partners (including the Deputy Attorney General for DHHS).
  - Monthly meetings
  - Included other members when additional expertise was needed
  - Began to develop staff requirements, training needs and criteria for referrals to FRC Staff



- Implementation was escalated to have two sites in operation in Las Vegas by the end of February 2007.
- October – December
  - Steering Committee and sub-committees developed policies and operating guideline
  - Reviewed assessment tools and determined which tool would best fit the Nevada Model
    - NCFAS-G chosen as the assessment tool to be used for DR cases



- 2007 legislature provided state general funds for the continuation of Differential Response Pilot Program.
- Casey Family Programs provided additional funding to support the project.
  - Provides funding for evaluation – 3 year evaluation done by Institute for Applied Research
- 5 additional DR sites added in SFY 08
  - (total of 7 DR sites – 4 in Las Vegas, 2 in Washoe and 1 in Elko)



- SFY 09 added 5 more DR programs for a total of 12 programs statewide.\*
  - 5 in Las Vegas, 2 in Reno and 5 Rural sites (Elko, Carson City, Lyon County (which also covers Pershing and Mineral Counties), Southern Nye (Pahrump), and Churchill County
  - SFY 11 a decision was made to reduce the Pahrump DR to a half time position. This allowed for a half time DR worker in Douglas County which increases the number of rural sites to 6

\*count includes Children's Cabinet which is funded by Washoe County Department of Social Services.



# Successes

- 13 DR programs in operation in Nevada
  - 12 FRC programs and Children's Cabinet, a community based provider that is funded through WCDSS
- 4,067 reports referred to DR from 2/28/07– 12/31/11
- 3,699 families served by DR (2/28/07 – 12/31/11)
- Institute for Applied Research evaluation found that while DR families had more past reports than comparison families, the DR families had fewer new/additional reports.





# Institute for Applied Research

## Evaluation Findings

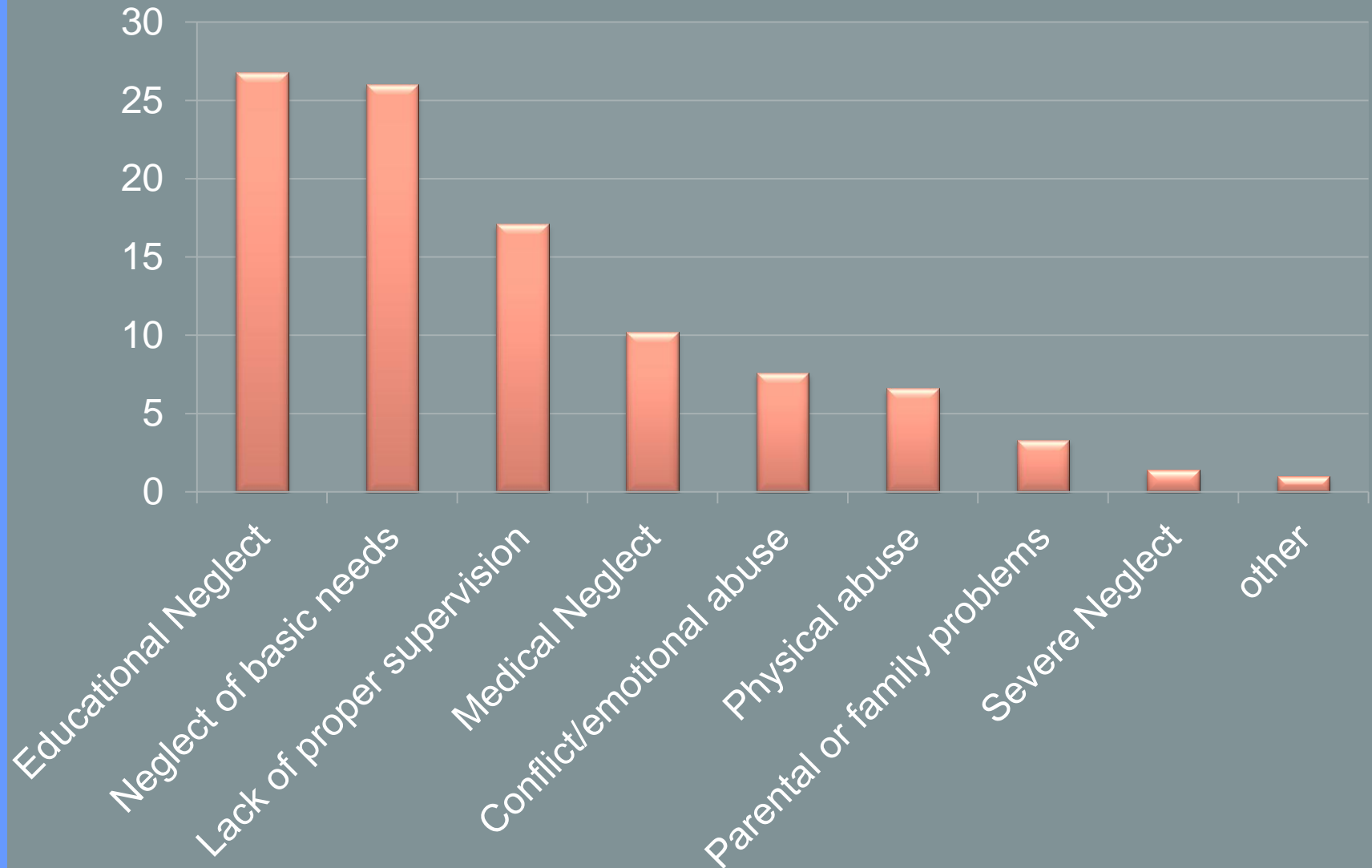
- Nearly all families who received a family assessment expressed satisfaction with the way they were treated and with the help they received. Most felt that their families were better off after the experience.
- Many of the families who receive a family assessment are poorer and less educated than other families in the state. Many of the families tend to be those experiencing significant problems related to the wellbeing of their children, who often live in poverty, with problems that are sometimes acute and often chronic in nature.
- Feedback from families and FRC/DR workers indicate that the DR program has been implemented with model fidelity, as designed both in terms of protocol (the manner in which families are approached in response to a report of child maltreatment) and in terms of the assistance and services provided to them, often addressing basic needs.



# Reports Screened for DR Family Assessments February 2007 – final IAR data extract (August 2010)

- Based on IAR data extracts
  - 18,582 accepted reports of maltreatment in areas where the DR program operational
  - 2,407 reports referred to DR (13%)
  - 2,005 reports served - 11 % of referrals in areas where DR is operational. (402 reports returned to CPS)
  - DR Referrals
    - 46% Clark
    - 30% Washoe
    - 25% Rural

## Types of allegations in DR reports



The IAR analysis can be interpreted to show that, *compared to similar families that were investigated, families provided with DR services can be expected to experience approximately a 27% reduction in new investigations/DR assessments over a 40 month period.*



# Foster Care Maintenance Payments

Foster care maintenance payments are made for eligible children in licensed traditional foster homes and licensed relative foster homes

## Age 0 -12 years

*Daily Rate: \$22.45*

*Monthly Rate: \$682.94*

*Annual Amount: \$8195.28*

## Age 13 and Older

*Daily Rate: \$25.42*

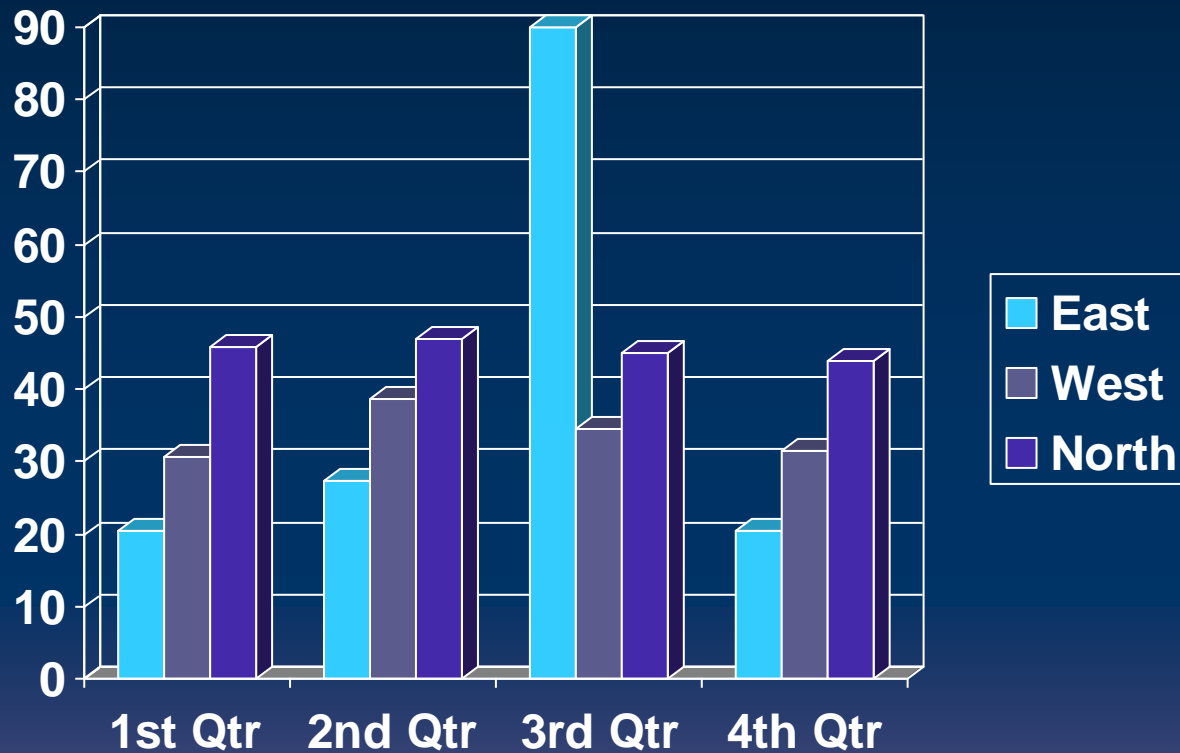
*Monthly Rate: \$773.17*

*Annual Amount: \$9278.04*

These rates are intended to reimburse the caregiver for housing, food, transportation, child care and entertainment



# Foster Care Caseloads



- Nevada Department of Health and Human Services, Grant Management Unit
- [http://dhhs.nv.gov/Grants/Sitemap\\_Grants.htm#Reports](http://dhhs.nv.gov/Grants/Sitemap_Grants.htm#Reports)
- Institute for Applied Research  
<http://www.iarstl.org>

Quality Improvement Center for Differential Response

<http://www.differentialresponseqic.org>

A stylized, dark green silhouette of a mountain range is positioned at the bottom of the slide, spanning the width of the content area. The background of the slide features a gradient from blue at the top to purple and pink at the bottom, where the mountains are located.