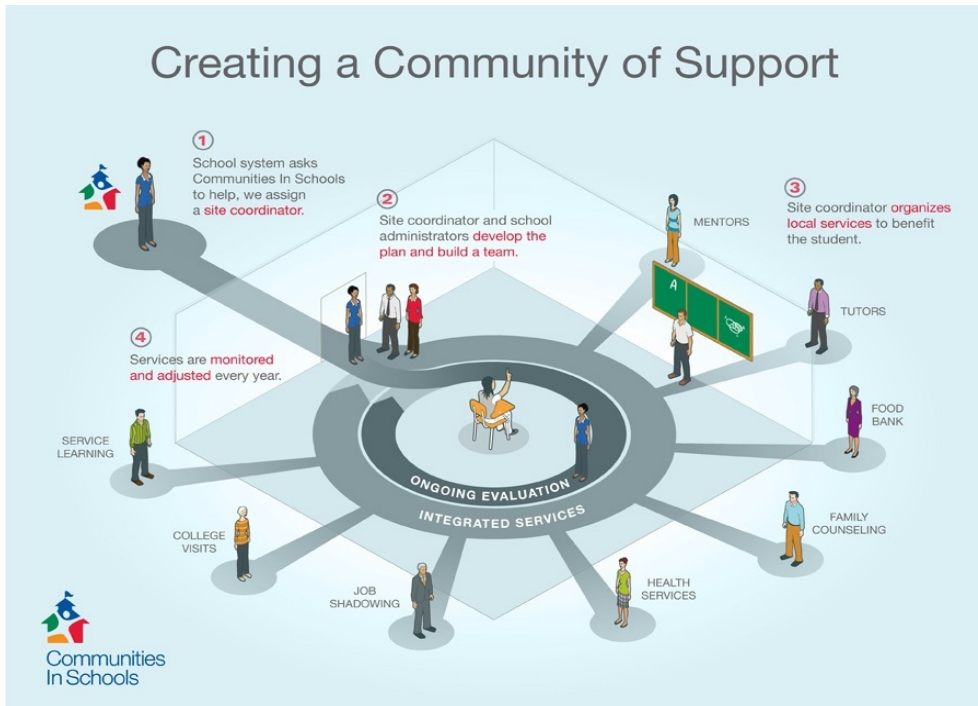


# The nation's leading drop out prevention organization

**Every three minutes in Nevada** a student drops out of school.

Communities In Schools works within the school system to address underlying factors that impede student success. By providing a site coordinator at our partner sites we are able to coordinate community resources to *surround students with a community of support, empowering them to stay in school and achieve in life.*



The integrated services model has had proven success in urban and rural communities, and is making a significant impact in addressing the unique needs of students in both Northeastern and Southern Nevada. The statistics below capture Free and Reduced Lunch and Limited English Proficiency rates at our comprehensive partner sites.

## CCSD Partner Sites:

- Kit Carson Elementary
  - 82.8% FRL
  - 25.3% LEP
- Cunningham Elementary
  - 71.6% FRL
  - 33.3% LEP
- Martinez Elementary
  - 100% FRL
  - 65% LEP
- McCall Elementary
  - 100% FRL
  - 65% LEP
- Wynn Elementary
  - 74.5% FRL
  - 63.4% LEP

- Bridger Middle School
  - 78.3% FRL
  - 39.8% LEP
- Rancho High School
  - 55% FRL
  - 24.3% LEP
- Canyon Springs HS
  - 67.6% FRL
  - 18.2% LEP

## ECSD Partner Sites:

- Southside Elementary
  - 63% FRL
- Spring Creek High School
  - 13.4% FRL
  - 9.2% Credit Deficient

## Data Highlights:

- CIS serves 22,000 students in 37 schools across the state
- It costs CISN approx. \$200 per student per year to deliver its services.
- 95 percent of CISN case-managed students were promoted to the next grade
- 90 percent of CISN case-managed seniors graduated from high school
- Last year, CISN provided 34,000 breakfasts for food-insecure students in rural Nevada.

## Our Results:

After only **one semester** of interaction, CISN documented the following for Clark County School District students:

### Attendance

Middle School/High School:

**73% Improved**

Elementary School:

**52% Improved**

### Student GPA

Middle & High School:

**62% Improved**

(.55 average increase in GPA on a 4.0 scale)

The results were equally strong in the Elko County School District where CIS also documented student achievement:

### Reading Program

Elementary School:

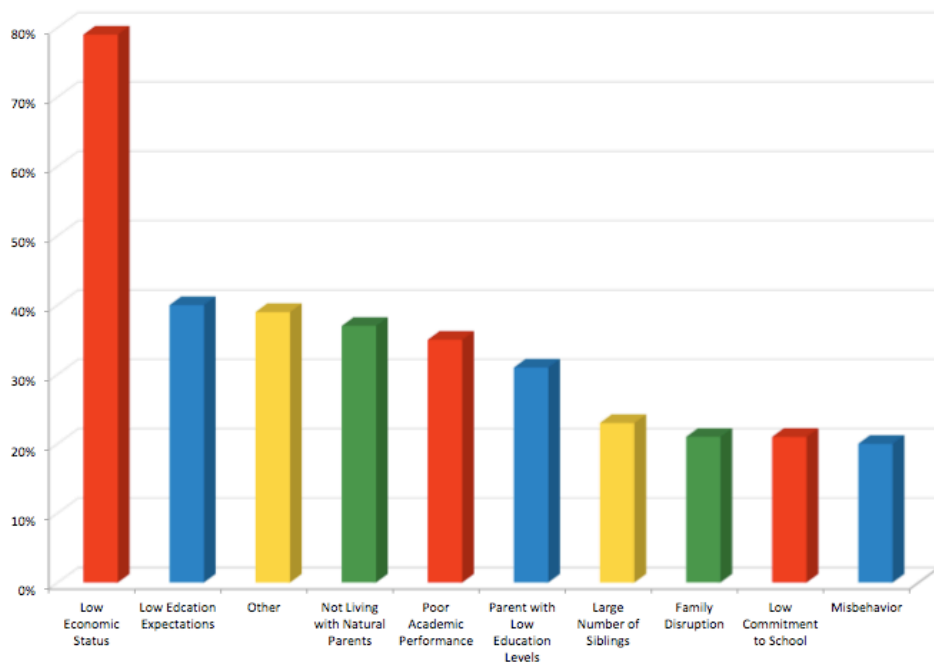
**62% Met their goals**

### Student GPA

High School:

**50% Improved**

(.9 average increase in GPA on a 4.0 scale)



A five-year longitudinal independent evaluation of the Communities In Schools model identified the risk factors for drop out before completion. The integrated services, implemented in at-risk school sites, was the only program that both decreased drop out and increased graduation rate.

### Examples of CISN Initiatives

- **CIS (Fellows) Academy:** CISN partners with the Clark and Elko County School District to operate its CIS (Fellows) Academy. CIS Academy is an in-school, program that provides at-risk youth with credit retrieval, tutoring, life skills training and career and college preparation.
- **Hunger Prevention:** In all our service areas, CIS coordinates programs to send food-fragile children home every Friday afternoon with backpacks full of nutritious food to help them make it through the weekend.
- **Mental Health & Counseling:** CISN offers counseling services to students in Northeastern Nevada via video telehealth network managed by the Office of Rural Health. Proctored UNLV counseling students provide services to ensure that at-risk students have access to counseling.
- **Pediatric Medical Services:** CISN partners with organizations in both Northeastern and Southern Nevada to ensure that children receive the immunizations and flu vaccines they need to stay healthy.
- **Resource Centers:** Resource centers have been placed in several of Nevada's most at-risk schools to provide families with food, school supplies, and hygiene packs.
- **School Supplies:** CISN provides schools with the supplies that children need to do their schoolwork at the start of each school year.
- **Early Childhood:** Our partnership with the GBC's Mark H. Dawson Child and Family Center in Northeastern Nevada helps to manage the Little Red Caboose Preschool in Carlin, a community with no private or public preschool services.
- **Academic Services Centers:** Tutoring and credit retrieval opportunities in collaboration with the Southern Nevada Housing Authority.

### Return On Investment:

A national economic evaluation by Economic Modeling Specialists Inc. found:

- The cost/benefit of every dollar invested in CIS yields **\$11.60 in benefit to the economy.**
- Average annual return to society is 18.4%
- High school graduates will be net contributors to their communities for an average of **44 years of their working life.**

### Plans for Expansion

CISN plans to expand to meet the need of more students and schools in both affiliates. In the 2012-13 school year, CISN will strategically expand to fill in feeder patterns under the two current partner high schools in Southern Nevada and one in Northeastern Nevada.

#### CCSD:

- Roy Martin Middle School
- Marvin Sedway Middle School
- JD Smith Middle School
- Chaparral High School

#### ECSD

- Adobe Middle School

In addition to expansion within the affiliates, a Northwestern Nevada affiliate serving Carson City and Reno is within the strategic growth strategy of the organization.

