



# Supporting the 21<sup>st</sup> Century Learner

Jhone Ebert  
Chief Technology Officer  
Clark County School District

**EXHIBIT T - EDUCATION**  
Document consists of 25 pages.  
Entire document provided.  
Meeting Date 05-09-12

# Clark County School District

The District employs **37,341 employees** including full-time, part-time, substitute, and temporary employees

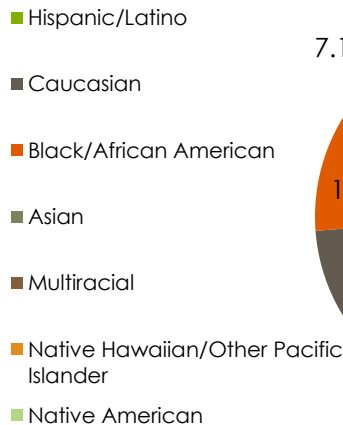
2010-2011 General fund operating budget  
**\$2.13 billion**

2010-2011 enrollment  
**309,893 students**

## 357 schools

- 217 Elementary schools
- 59 Middle schools
- 49 High schools
- 24 Alternative schools
- 8 Special schools

### Student Population



CCSD is the  
**5<sup>th</sup>**  
**Largest**  
School  
District in  
the Nation.

# Challenges

- Too few islands of excellence
- Achievement gaps are too great
- Reserved expectations of excellence

# Strategies

- Embrace transparency
- Welcome criticism
- Partner with critical friends

# Focus for Action

- **Harness breakthrough innovation** and redefine how schooling is accomplished.
- **Fully tap the potential of a new model of schooling.**
- **Align resources to our highest priorities** and execute with precision.
- **Continue to do what works** and stop doing what does not.

# CCSD Technology

**105,000 computers** supported with an average child to one computer ration of **4.9**.

Over **150 million email messages** are delivered each year; spam filters caught **300 million spam messages** last year.

**6,000 business process jobs** are processed monthly.

There are over **32,000 telephones** on the CCSD telephone network, with over **75,000,000 calls** processed per year.



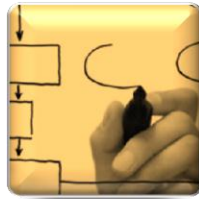
**All schools and sites are interconnected** via a data communications network; most sites are on the gigabit WAN (1.5 Gb/s capacity).

Over **19,000 data switches**

Approximately **120,000 data ports**

Over **12,400 Wi-Fi access points** are installed in CCSD schools.

# Current Projects and Comparisons



Major Projects



Comparisons



1:1 Initiatives

# Recommended Equipment Life Cycle

(examples)

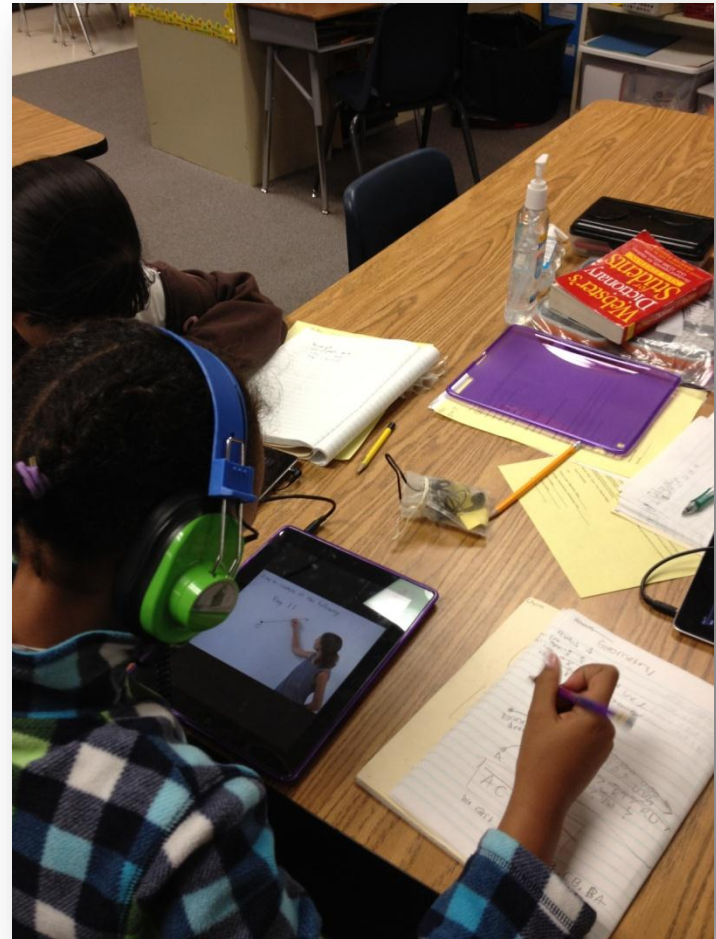
Equipment	Recommend ed Upgrade (yrs)	CCSD Upgrade (yrs)	Difference
Backbone (WAN) Routers	5 years	7 years	2 years
Campus Wiring	9.5	15 years	5.5 years
Digital Telephones	6 years	12 years	6 years
Servers	4 years	5 years	1 year
Network Switches	4.5 years	10 years	5.5 years
Wi-Fi Access Points	3 years	5 years	2 years

Information taken from Network World, "When to Upgrade", November 2005

<http://www.networkworld.com/supp/2005/tips/112805-lifecycle-tips.html>

# Other Devices

- Purchased by schools and departments
  - Printers
  - Projectors
  - Whiteboards
  - Document Cameras
- Annual cost = \$3.7 million

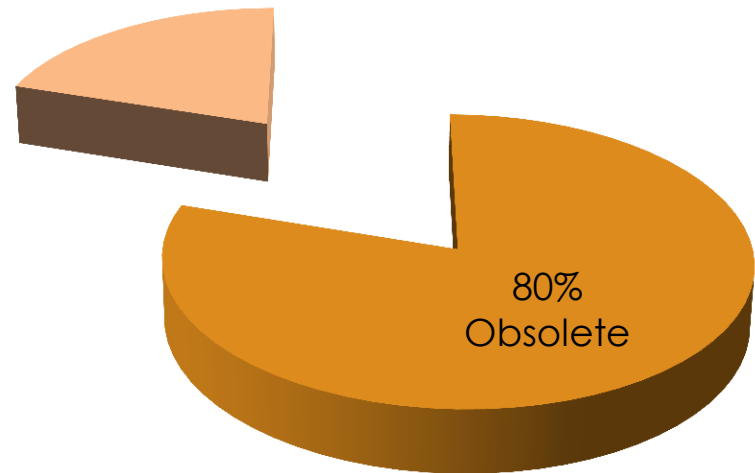




# WiFi

- WiFi is available in most schools
- Annual Cost =  
\$2.2 Million

## WiFi Access Points



# Internet

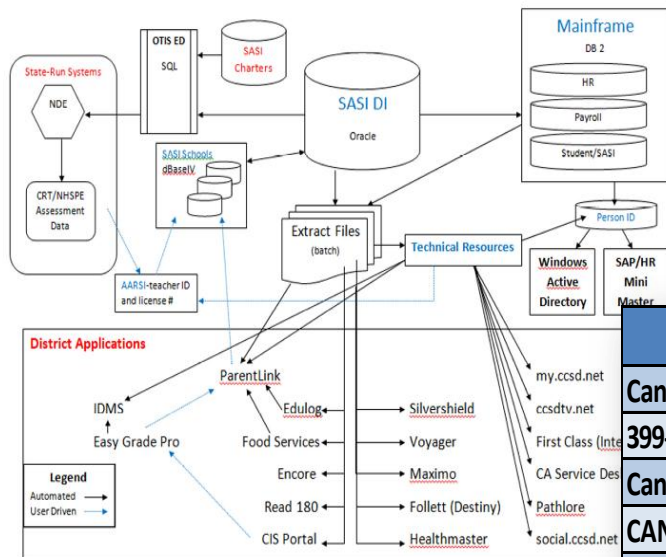
- Proxy servers
- Firewalls
- Access to the internet
- Total annual cost is \$780,000

# High Priority Projects

Project	Description	Estimated Cost
Data Management	Establishing and implementing enterprise data standards, data processes, clear staff roles and responsibilities for data management, and efficient data integration across all mission-critical systems.	\$7.7 Million
Business Intelligence	Implementation of the already identified SAP Business Objects has been identified as the Business Intelligence platform for the District.	\$1.6 Million
Identity Management	Implementation of an Identity Management System to streamline provisioning of users into systems, reducing or eliminating delays in getting staff access to applications.	\$1.4 Million
Microsoft Windows and Active Directory Conversion	Conversion from Novell Netware to Microsoft Windows and Active Directory to allow the District to implement additional services and to keep pace with industry standard directory structures.	\$1.63 Million
SIS Replacement	Selection and implementation of the new student information system (SIS) to replace SASI.	\$23 Million

# Data Management (example)

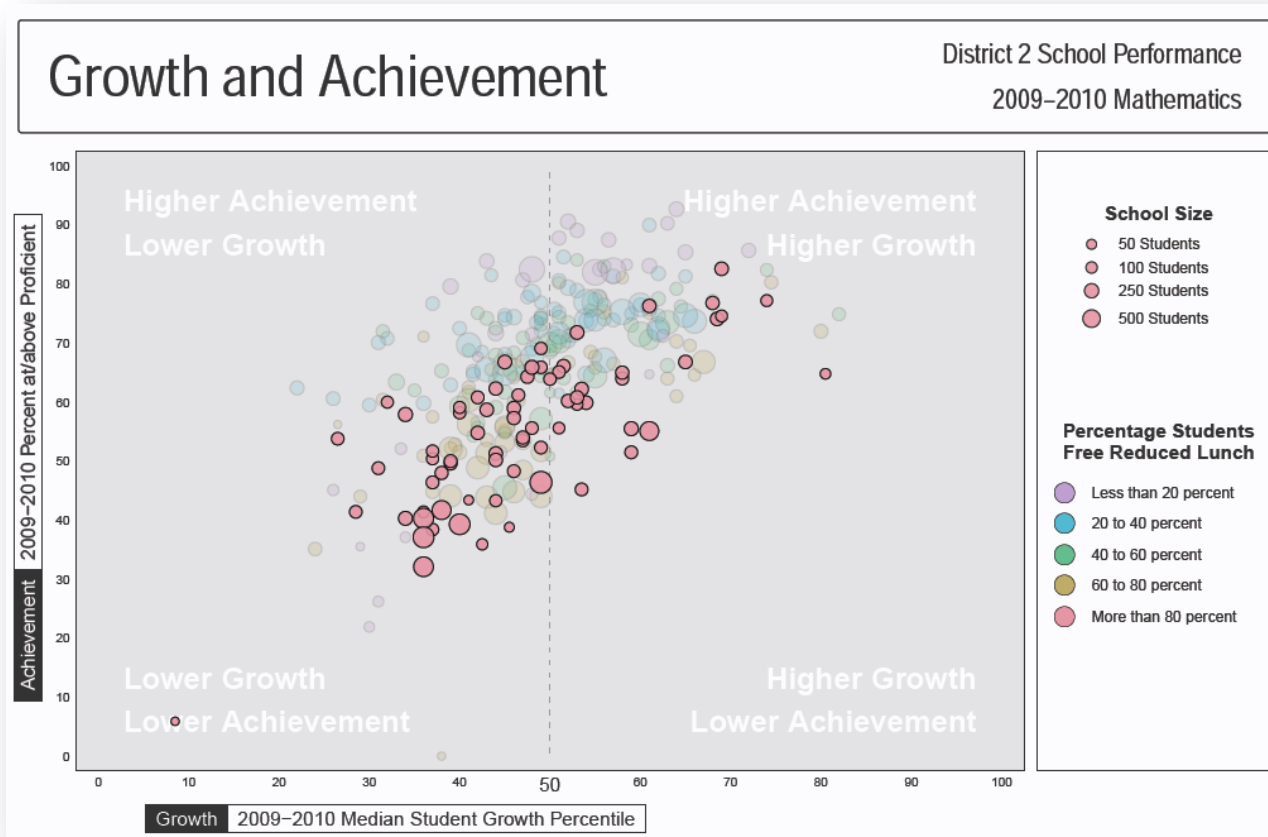
Figure 5-4.1 CCSD data/account management configuration



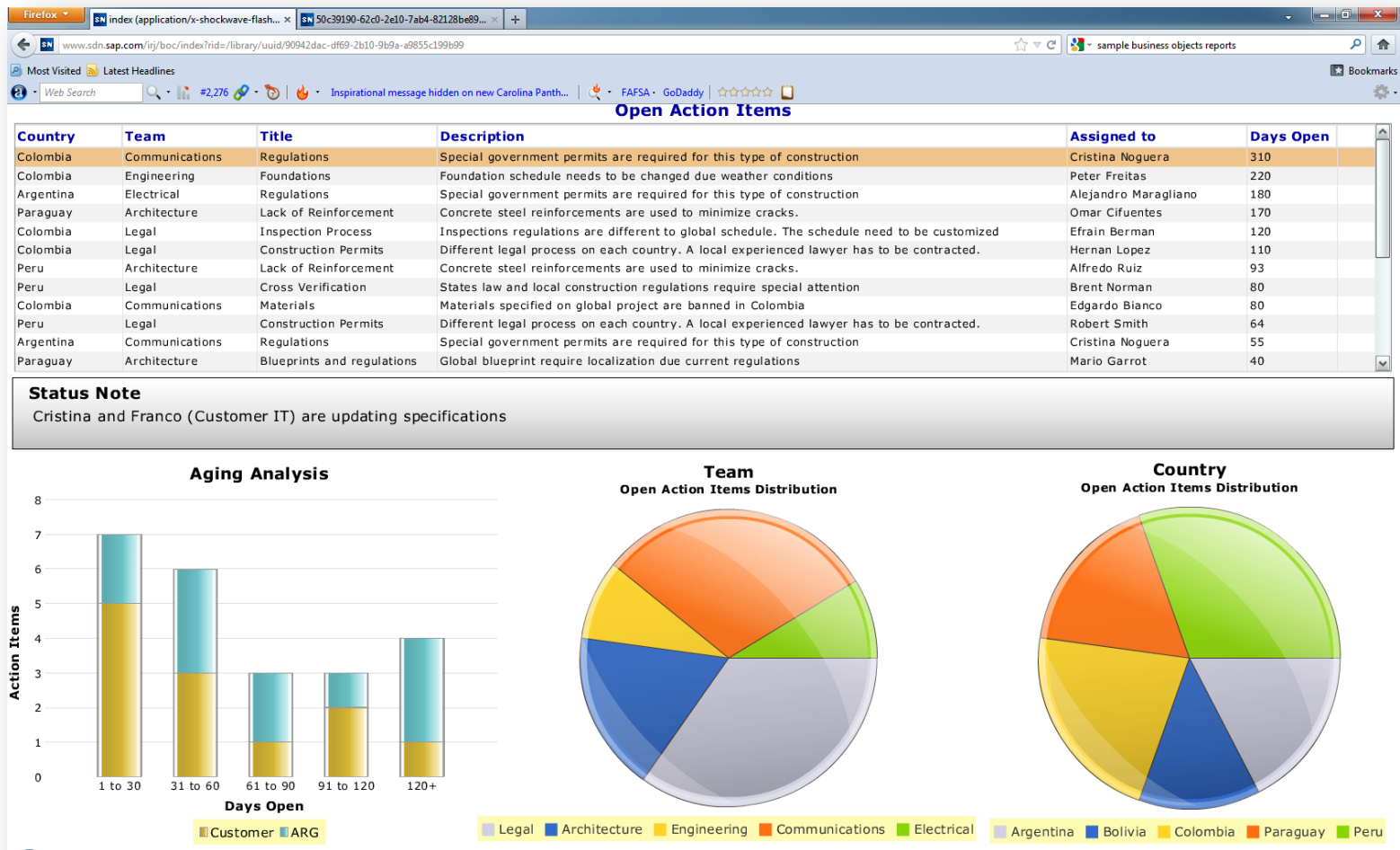
Source: TISS Division, 2011

School Name	Source
Canarelli, Lawrence & Heidi MS	SASI.SCHOOLS
399-Canarelli Middle School	SASI.ASCH
Canarelli, Lawrence & Heidi MS	ccsd.net
CANARELLI H AND L MS	RSTARS
399-CANARELLI MIDDLE SCHOOL	Screen 19
Canarelli, Lawrence & Heidi MS	School Telephone Directory
CANARELLI MS	SAP Org Hierarchy
399-Canarelli MS	11-12 Official CCSD Count Day Demographics .xlsx
Canarelli, Lawrence & Heidi MS	TISS ServiceDesk
Canarelli Middle School	ParentLink
Canarelli, Heidi & Lawrence MS	School Payment Solutions
Canarelli MS	Nevada Growth Model

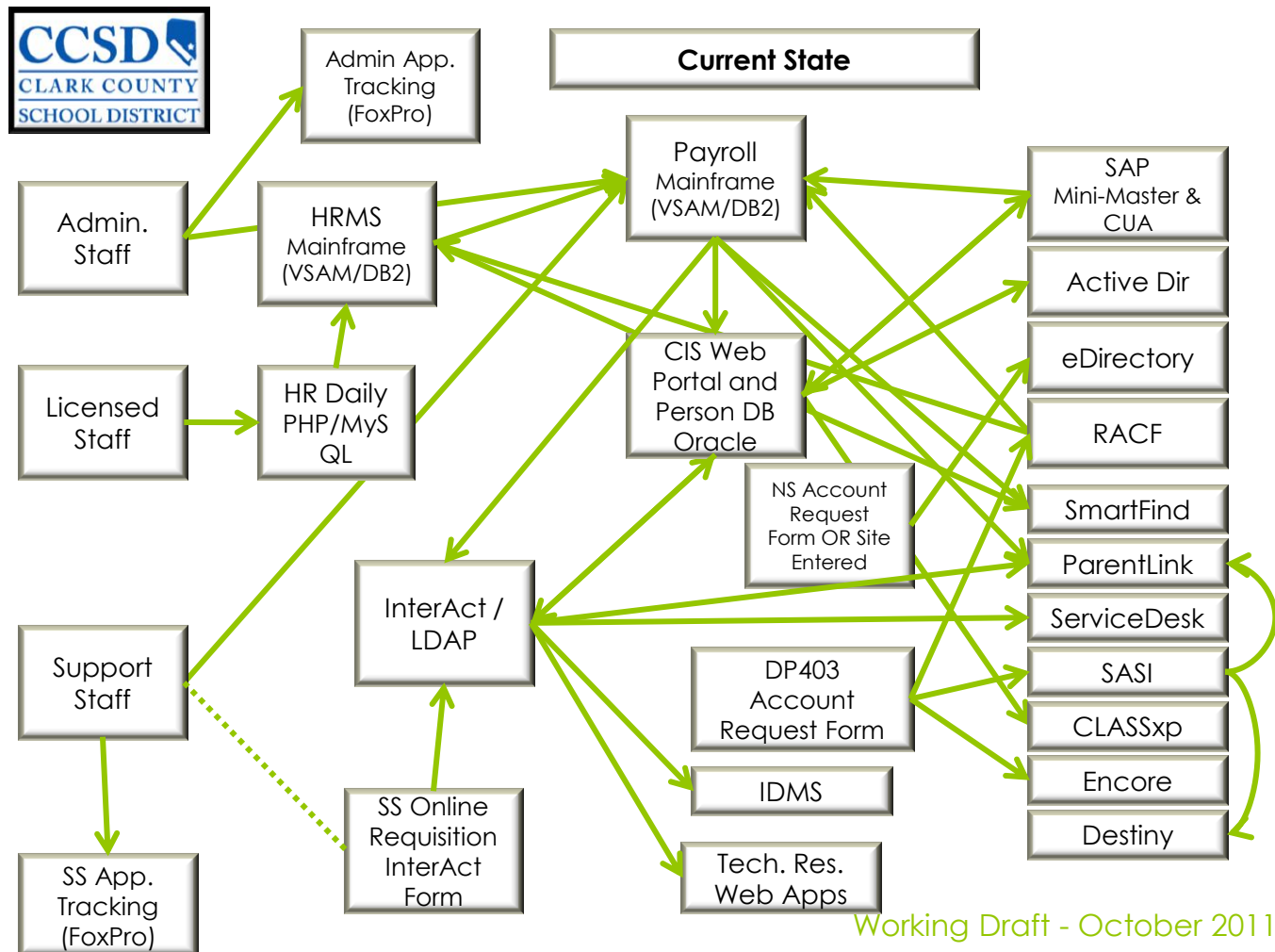
# Nevada Growth Model

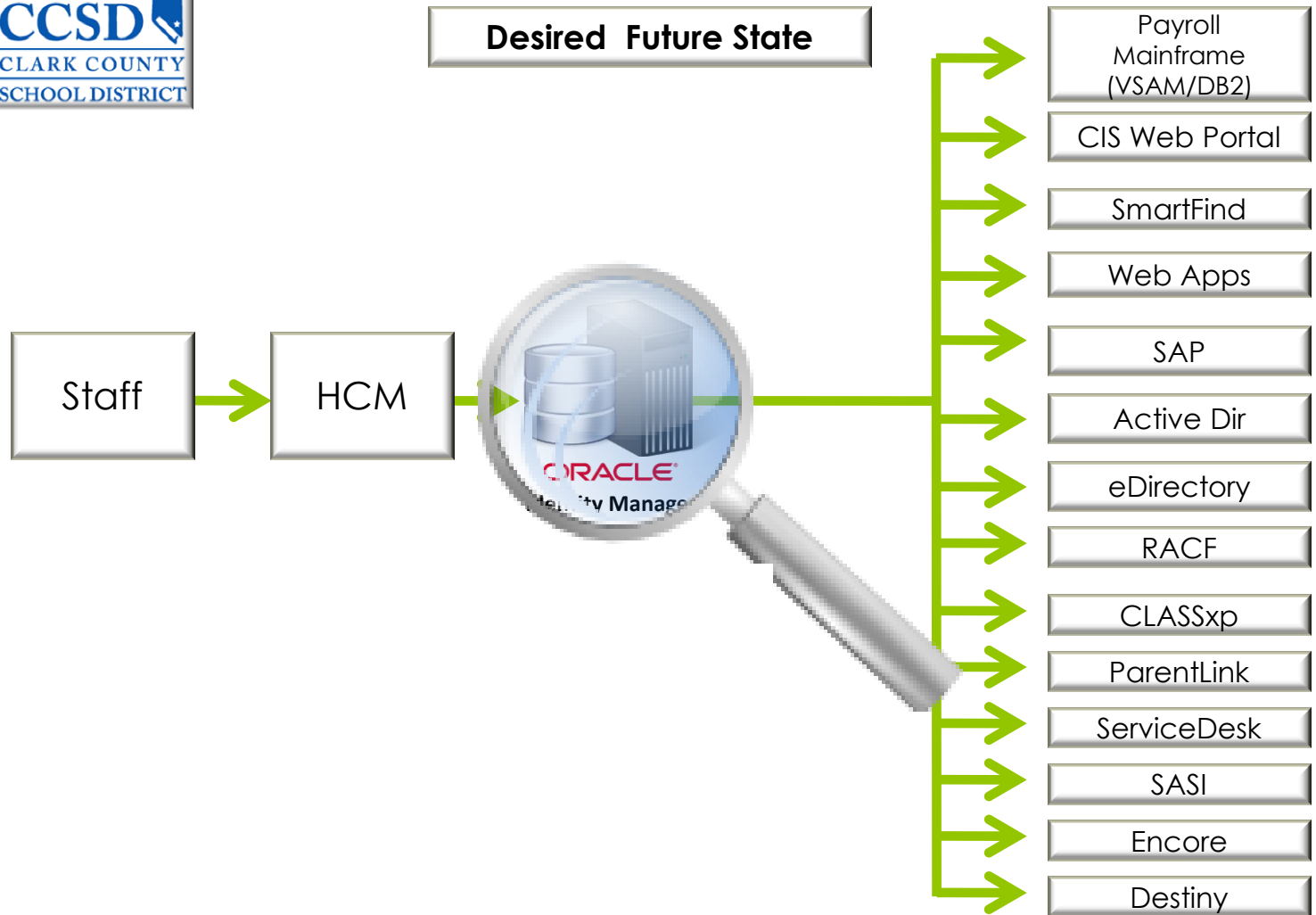


# Business Intelligence



# Identity Management (example)

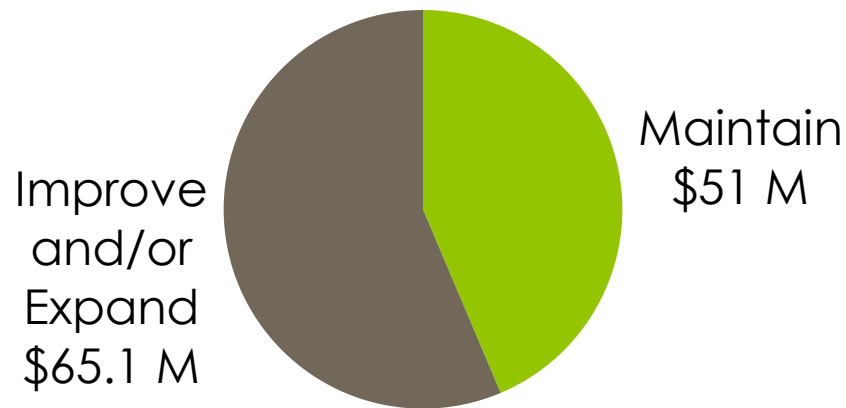
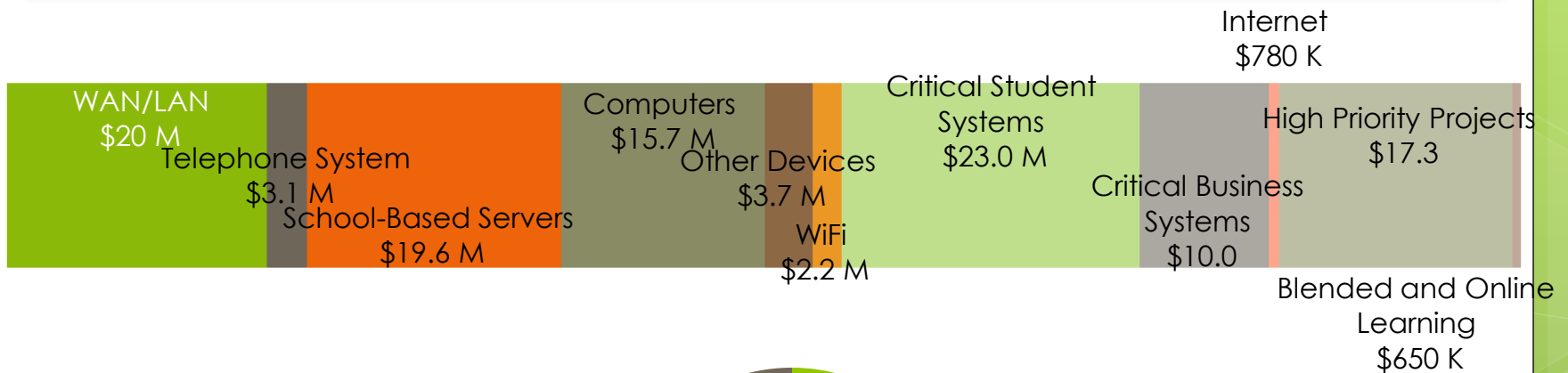






# Budgetary Considerations

**\$ 116.1 million**



# Technology Metrics

Key Metric	State and Local Government Entities (Gartner)	Clark County School District
IT Spending as a % of Operating Expense	2.7%	1.7%
IT Spending Percentage to Run-Grow-Transform	78% - 11% - 11%	100% - 0% - 0% Currently Funded  50% - 10% - 40% Desired State (estimated)



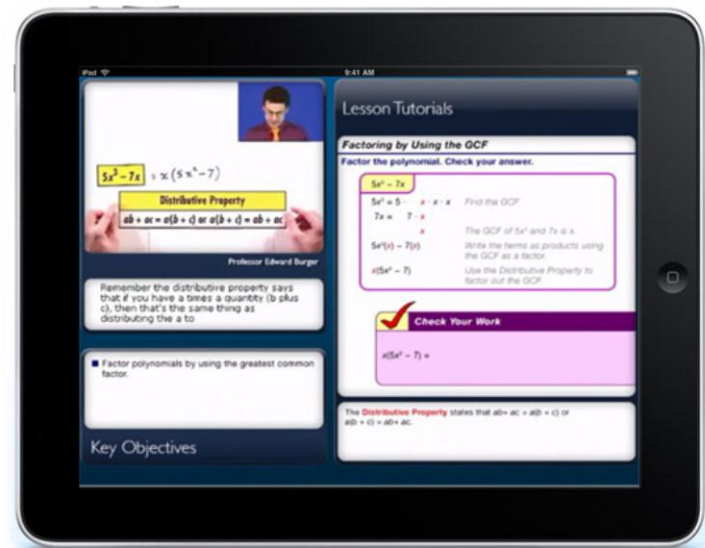
# Mobile Devices and 1:1 Model

For students to use a mobile device, they must have:

- Device
- Access to content
- Access to LAN, WAN, Internet

Teachers and schools must have:

- Software
- Professional Development
- Related Services



# Diverse pathways to high school completion

- Immediate targeted implementation to increase the graduation rate **this year.**
  - **Competency-based education**
- Credit retrieval
- Dropout recovery

# Blended learning

- Innovative Learning Environments
  - Unique and specialized programs at all CCSD schools
  - Aligned professional development
  - Virtual High School and Academy of Individualized Study
  - Blended Learning and Technology Resources Task Force

# Blended & Online Learning

- 100,00 students blended/online by 2015
- Shifting the K-12 learning environment from the present arrangement to one that is instead almost entirely composed of **blended** or full-time **virtual** learning
- \$300 per student/per course/per semester

**TAKE A HEALTHY TEST DRIVE**

**Enroll your Student in Health or Driver Education\* ONLY \$10!**

For a limited time, CCSD Virtual High School will be offering Health and Driver Education\* to students across the state of Nevada free† of charge. Interested schools need to request a school counselor account to register your students. See website for details and deadlines.

**Try Virtual High School:**

- Enroll in Health or Driver Education\* ONLY \$10! - For a limited time only!
- Courses Delivered Online - interactive lessons, instant message support.
- Accredited High School - approved by Northwest Accreditation.
- Highly Qualified Teachers - licensed, full-time CCSD teachers.
- On-demand Enrollment - request enrollment for students as needed until June 1st.
- Self-paced Competency-based - students complete assignments at their own pace and finish once all content has been mastered. All courses must be complete by June 30th to receive credit.

**INNOVATIVE LEARNING ENVIRONMENTS**

ACADEMY OF INDIVIDUALIZED STUDY  
VIRTUAL HIGH SCHOOL  
VEGAS VIRTUAL ONLINE EDUCATION

**A Variety of Options to Meet Student Needs**

**Academy of Individualized Study**  
High School (AIGS)

**Vapor PACE**  
Vapor PACE Virtual Online Education

**Get Started at AIGS**  
Academy of Individualized Study  
High School  
702.798.6326  
702.798.6326  
www.nvhigh.org

**Get Started at Vapor PACE**  
Vapor PACE  
702.798.6326  
702.798.6326  
www.nvhigh.org

# Our Charge

“All our efforts have one purpose.  
It is to ensure all students are ready by exit.”

— Superintendent Dwight D. Jones



# Connections

