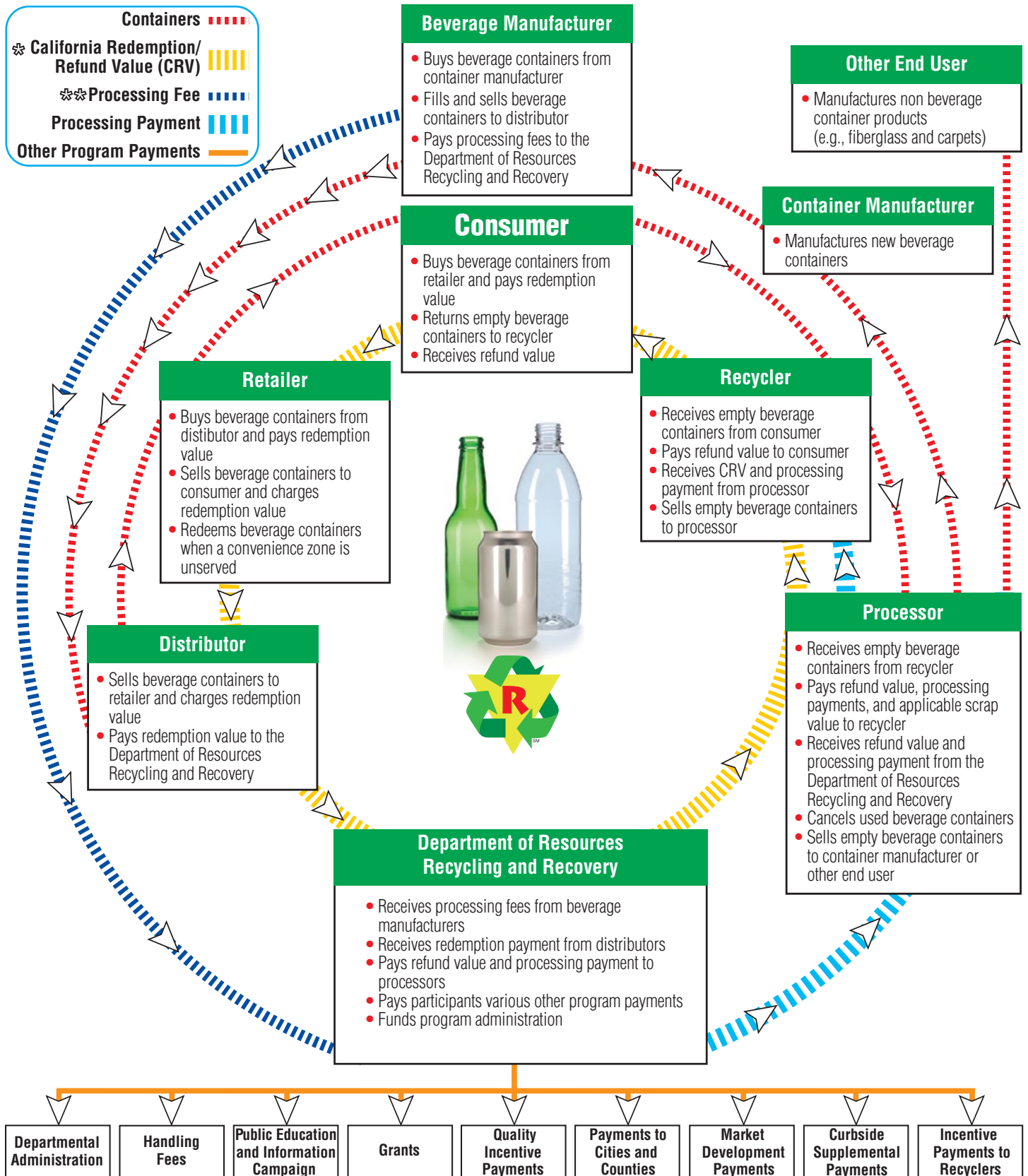


NOTES: ❖ California Redemption Value is paid when a beverage container is purchased. California Refund Value is received when a beverage container is returned for recycling. CRV is used to reference both terms.

❖❖ Processing payments are paid to recyclers equaling the difference between the average cost to recycle and the average scrap value received. Processing fees are equal to a percentage of processing payments ranging from 10 to 65 percent.



NOTES: ☼ California Redemption Value is paid when a beverage container is purchased. California Refund Value is received when a beverage container is returned for recycling. CRV is used to reference both terms.

☼☼ Processing payments are paid to recyclers equaling the difference between the average cost to recycle and the average scrap value received. Processing fees are equal to a percentage of processing payments ranging from 10 to 65 percent.

Keep it *Green*, Recycle!



Green Earth
RECYCLING

California BEVERAGE CONTAINER LABELING*

CRV MESSAGE LABELING OPTIONS:

- CALIFORNIA REDEMPTION VALUE
- CA REDEMPTION VALUE
- CALIFORNIA CASH REFUND
- CA CASH REFUND • CA CRV

For all qualifying beverage containers regardless of container size



A

ALUMINUM OR BIMETAL CANS (A)

Section 2200(b)(1): Metal containers shall be marked on the top end of the container in minimum lettering size at least 3/16" (inch) in height. Metal containers with a top lid of two inches or less in diameter shall have a minimum lettering size of at least 1/8" (inch) in height.

ALUMINUM OR BIMETAL BOTTLES

Section 2200(b)(4): Metal bottles shall be marked on the side of the bottle in minimum lettering size at least 3/16" (inch) in height.

GLASS OR PLASTIC BOTTLES

Option #1.
Section 2200(b)(2)(A): Along the bottom edge of the container label in minimum lettering size at least 3/16" (inch) in height.

Option #2.
Section 2200(b)(2)(B): On or in a secondary label minimum lettering size at least 3/16" (inch) in height.

* Please see the full text of the regulations for complete requirements.



A



1



1



2



2



A

CT-DE-IA-MA-ME-NY-OR-VT 5c

CA CASH REFUND

GOVERNMENT WARNING: (1) ACCORDING TO THE SURGEON GENERAL, WOMEN SHOULD NOT DRINK ALCOHOLIC BEVERAGES DURING PREGNANCY BECAUSE OF THE RISK OF BIRTH DEFECTS. (2) CONSUMPTION OF ALCOHOLIC BEVERAGES IMPAIRS YOUR ABILITY TO DRIVE A CAR OR OPERATE MACHINERY, AND MAY CAUSE HEALTH PROBLEMS.

MADE FROM FERMENTED APPLE JUICE, CARBONATED WATER, SUGAR, MALIC ACID, YEAST WITH ASCORBIC ACID, CONTAINS SULFITING AGENT SULFUR DIOXIDE.
PRODUCT OF APPLE HILL, CA, 95614 U.S.A.

Nutrition Facts

Serving Size 8 fl oz
Serving Per Container about 4

Amount per serving	% Daily Value*
Calories 100	
Total Fat 0g	0%
Sodium 15mg	<15%
Total Carbohydrates 7g	2%
Sugar 7g	
Protein 0g	0%

* Percent Daily Values are based on a 2,000 calorie diet.

3

Option #3.
Section 2200(b)(2)(C): On a container body label or secondary label with contrasting colors with legible lettering size at least 1/8" (inch) in height. Contrasting colors shall direct the readers to the message required.

PLASTIC PORTION CONTROLLED CUPS

Section 2200 (b)(3): Plastic portion controlled cups that have peelable, heat sealed lids that are not resealable, shall be marked in a minimum lettering size of at least 1/8" (inch) in height on either side of the container only, or on the lid and bottom of the container.

** California only

Printed on Recycled Paper
(Revised 1/10)

Beverages subject to California Refund Value (CRV)

Beverage Container Recycling and Litter Reduction Act: PRC Section 14504

The following products packaged in aluminum, glass, plastic or bimetal beverage containers:

- **Beer and malt beverages...** *for example:* Budweiser, Coors, Corona, Heineken, Mike's Pomegranate Martini, Smirnoff Ice, Bartles & Jaymes Strawberry Daiquiri
- **Wine coolers and distilled spirit coolers...** *for example:* Arbor Mist White Zinfandel Exotic Fruits, Woodchuck Hard Cider, Wyder's Pear Cider
- **Carbonated fruit drinks...** *for example:* Martinelli's Sparkling Cider, Ocean Spray Sparkling Juice Drink, Welch's Sparkling Juice Cocktail
- **Noncarbonated fruit drinks that contain any percentage of fruit juice...** *for example:* Snapple Juice Drink, Hawaiian Punch Fruit Juicy Red, Minute Maid Orange Juice
- **Carbonated water, including soda and carbonated mineral water...** *for example:* S. Pellegrino Sparkling Natural Mineral Water, Crystal Geyser Sparkling Mineral Water, Perrier Sparkling Natural Mineral Water
- **Coffee and tea beverages...** *for example:* Starbucks Frappuccino Coffee Drink, Lipton Iced Tea, Arizona Green Tea .
- **Noncarbonated water, including noncarbonated mineral water...** *for example:* Evian Natural Spring Water, Dasani Purified Water, Fiji Natural Artesian Water
- **Carbonated soft drinks...** *for example:* 7Up, Coca-Cola, Mountain Dew, Pepsi, Sprite
- **Noncarbonated Soft Drink...** *for example:* SoBe Lifewater, Country Time Lemonade, Glaceau Vitaminwater, Visvita Aloe Vera Drink, Don Jose Horchata.
- **Vegetable Juice (16 oz and under only)...** *for example:* V8 100% Vegetable Juice, Odwalla Carrot Juice, Campbell's Tomato Juice
- **"Sport" drinks...** *for example:* Powerade, Gatorade



**The products listed in this document are intended to provide a range of examples and should not be construed as an endorsement of any products by the Department of Resources Recycling and Recovery (CalRecycle).*

Excluded: Milk, medical food, infant formula, wine, 100% fruit juice in containers 46 ounces or more, vegetable juice over 16 oz.

For more information about recycling your beverage containers, visit CalRecycle at:

www.calrecycle.ca.gov/BevContainer
1-800-RECYCLE

For CRV labeling questions or to submit products for CRV compliance contact:

(916) 323-1835 or **reg.crvlabeling@calrecycle.ca.gov**

Si necesita información en español, llame al 1-800-RECYCLE



(Revised January 2012)