

# SB 413 Hearing Senate Judiciary Committee April 7, 2023

---



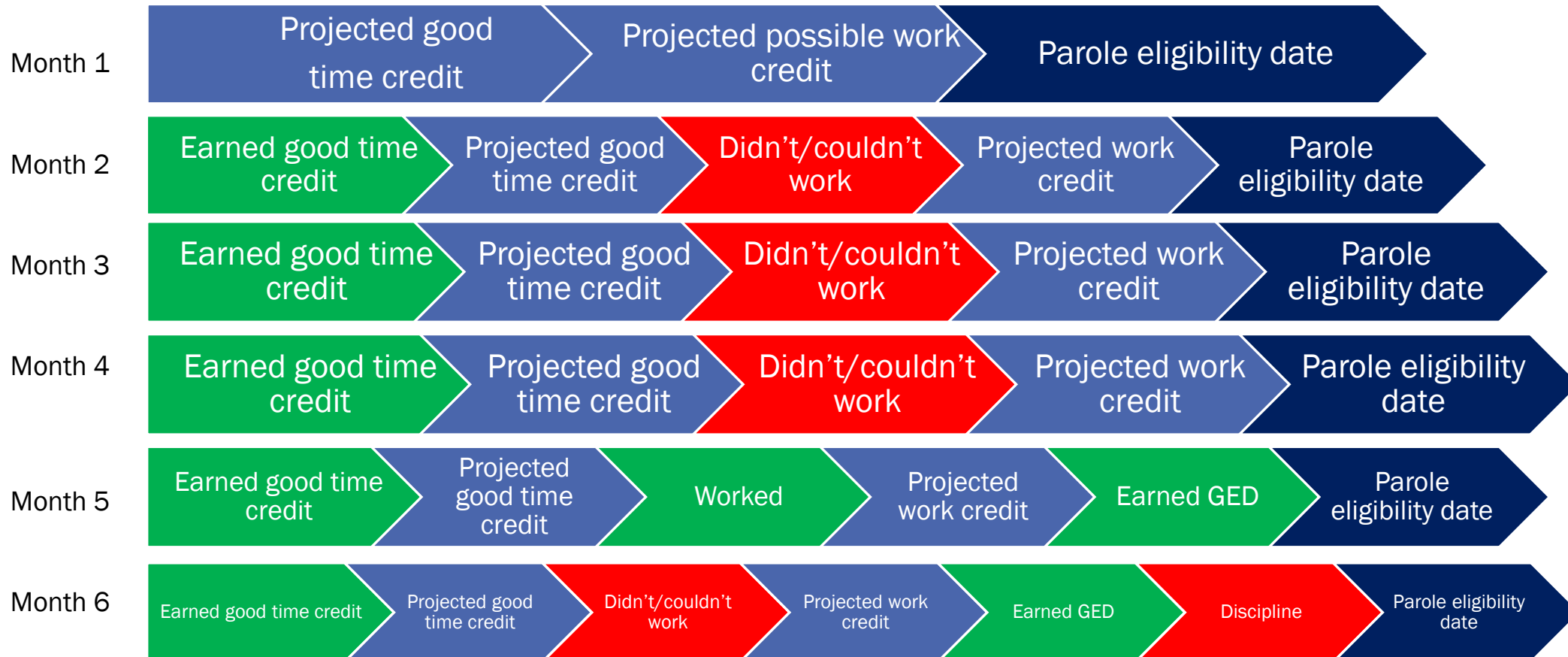
# Current Sentence Credit Scheme

---

- See “Sentence Credit Calculation Examples” exhibit
- These calculations can be provided to any incarcerated person
- Questions we all have:
  - “Which credits were earned?”
  - “Which credits were not earned?”
  - “When is this person eligible for parole?”
  - “What does *that* credit mean!?!?”
  - “So, the dates keep moving?”

# “When is the incarcerated person eligible for parole?”

\*Diagram is not to scale with actual time calculation



# Methodology Used to Measure Percentage of Minimum Served Upon First Release to Parole

---

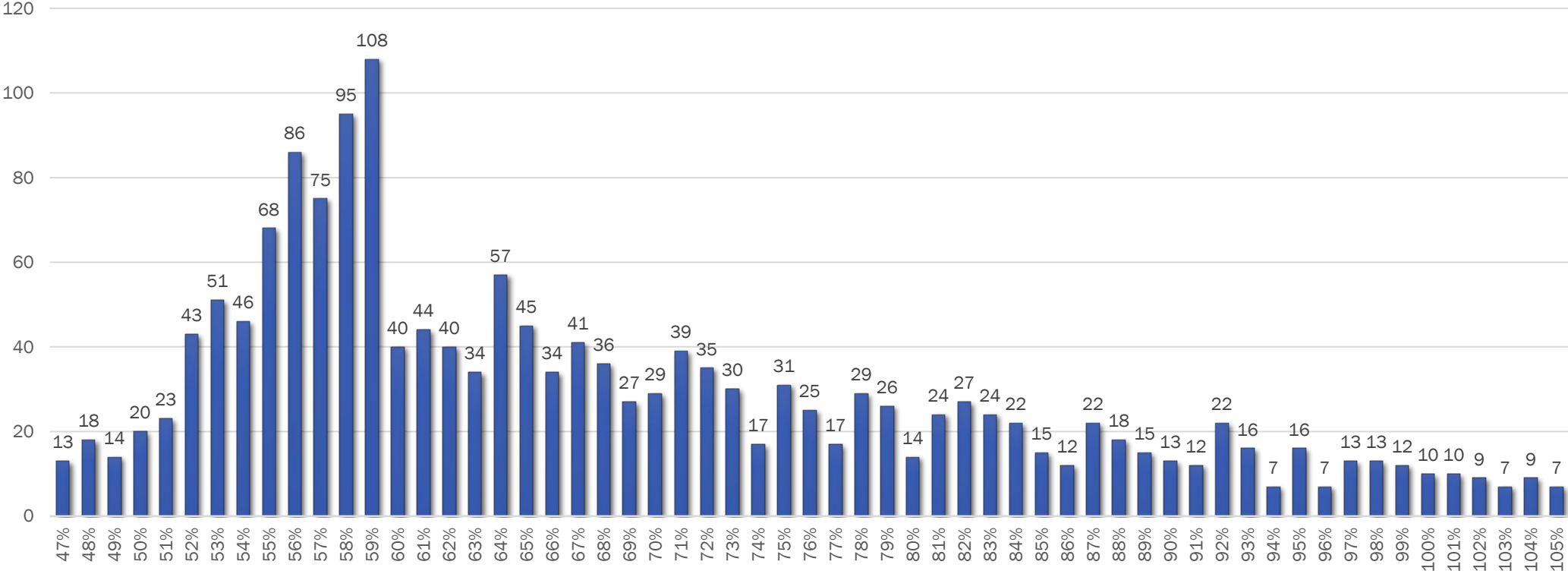
- Analyzed releases from 2017-2022
- New commitments
- One offense in the booking (meaning the incarcerated persons in this data set do not have multiple offenses/sentences)
- Measured time served from retro date to release
  - A retro date is the start date of sentence after any jail credits have been applied
- Divided time served before release to parole by minimum sentence

# Average Percentage of Minimum Served – Drug and Property Offense Group (CAT C, D, and E)

---

Felony Category	Average % of Min Served
C	71%
D	72%
E	75%

# Percentage of Minimum Sentence Served by Drug and Property for Categories C, D, & E - by Occurrence



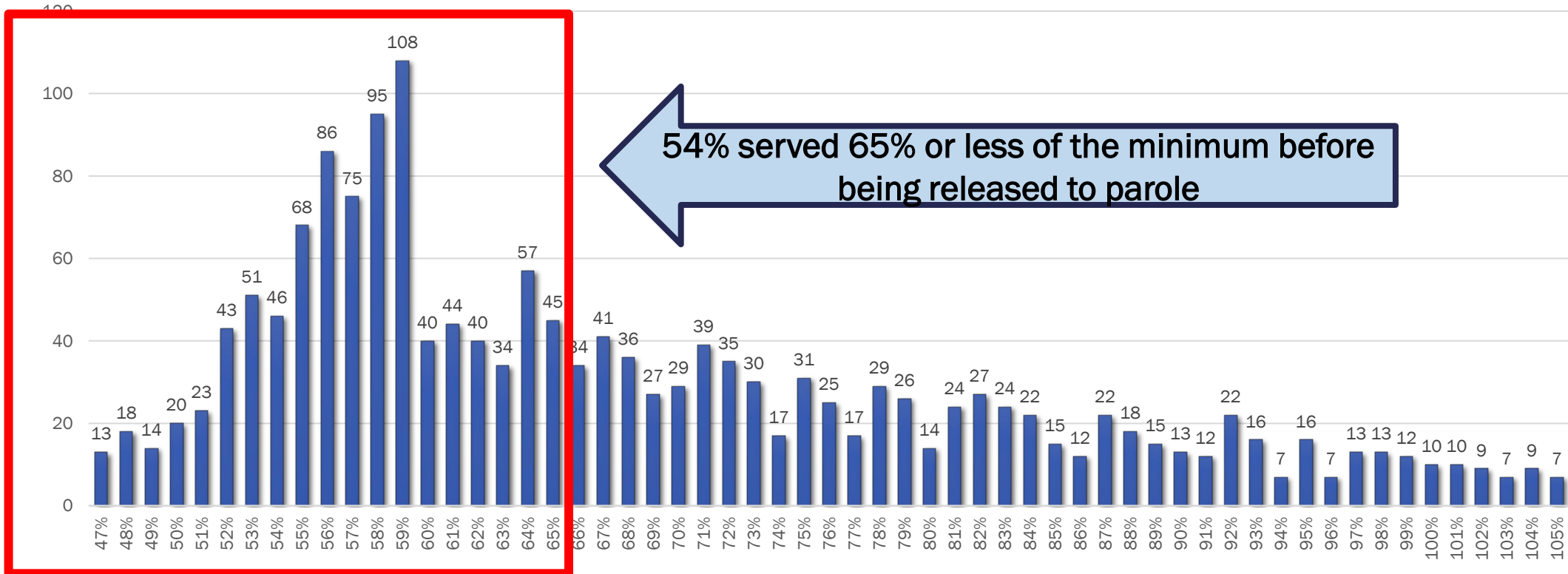
This visual only includes most occurrences to improve visibility of visual.

# Details of Percentage of Minimum by Occurrence on Slide 6

---

- The visual represents 1,712 category C, D, and E felonies in the drug and property offense group between 2017-2022
- These incarcerated persons (1,712) served 47% to 105% of minimum sentence upon release to parole
- Of the 1,712, 54% served 65% or less of the minimum sentence before being released to parole (920 incarcerated persons of the 1,712)

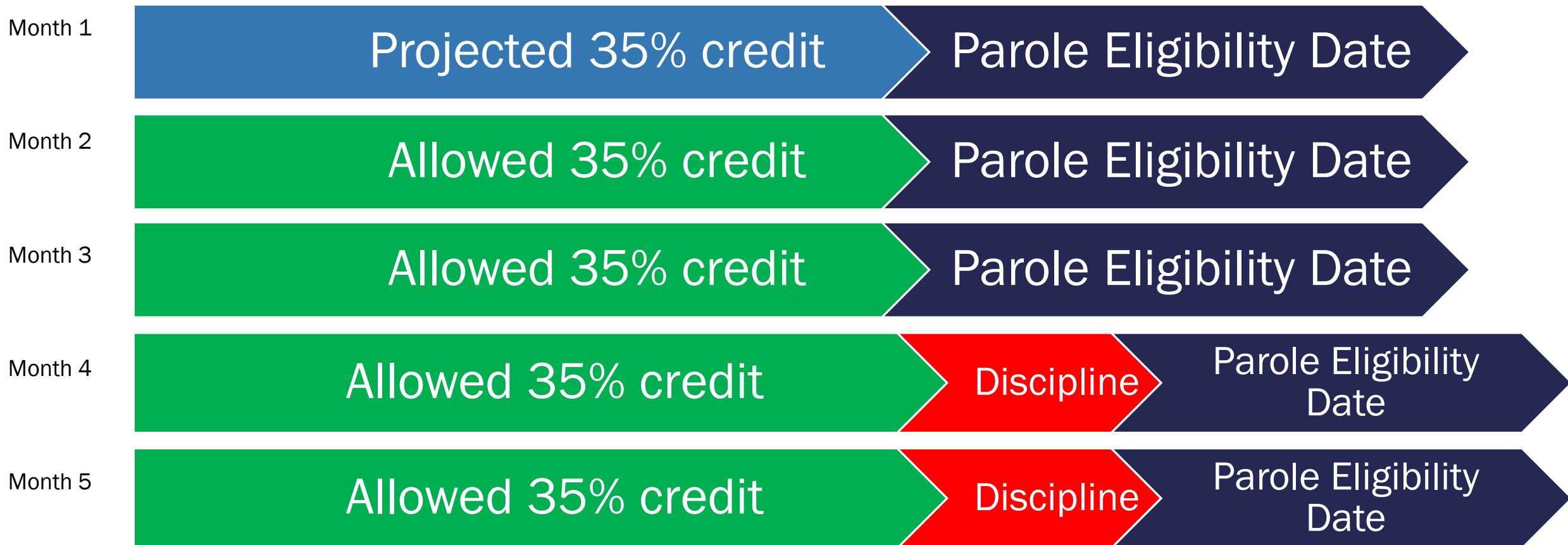
# Percentage of Minimum Sentence Served by Drug and Property for Categories C, D, & E - by Occurrence



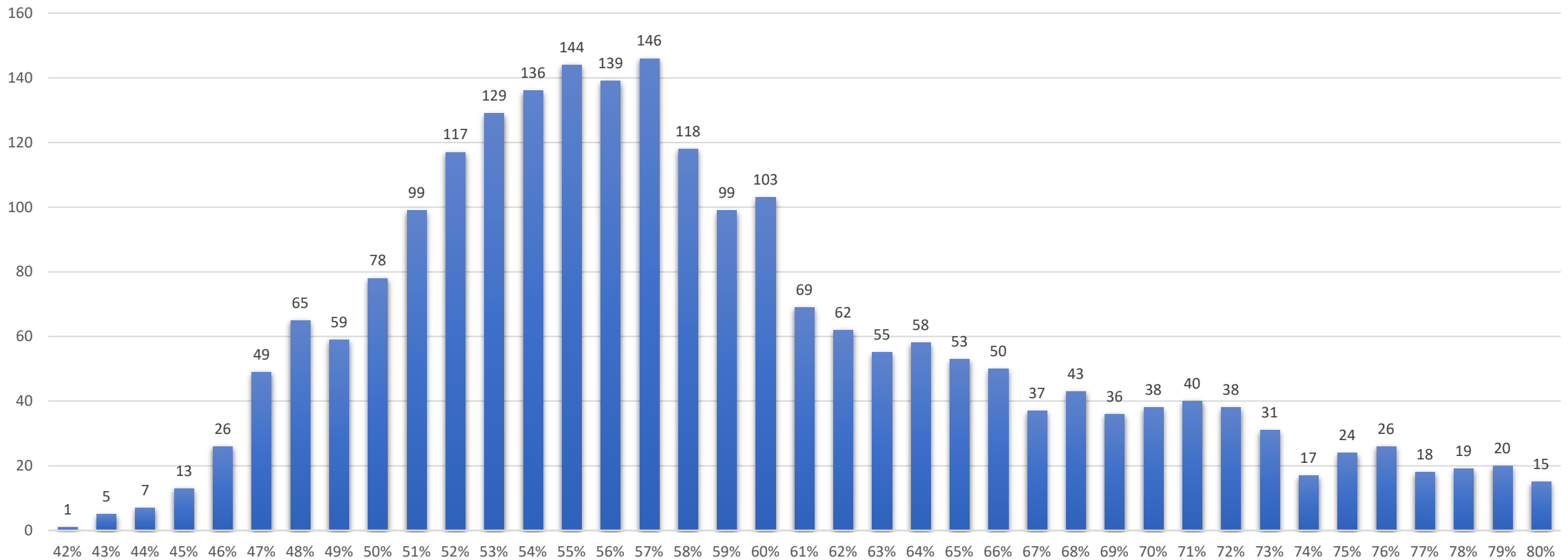


# SB 413 (w/amendment)

\*Diagram is not to scale with actual time calculation



# Percentage of Maximum Sentence Served When Discharged





Questions?

---