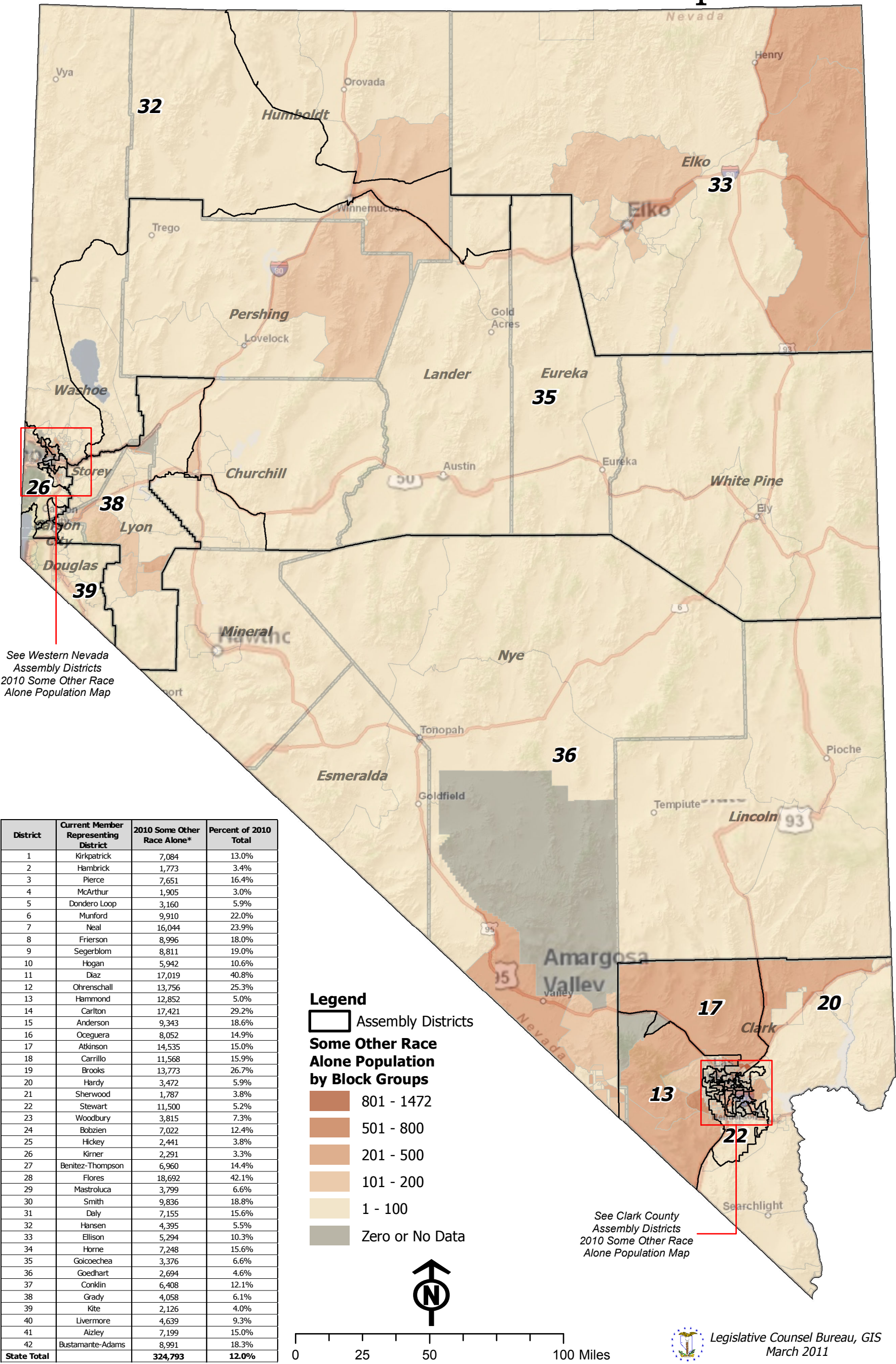


State of Nevada Assembly Districts

2010 Some Other Race Alone Population



Note: The population database is derived from the 2010 Census Public Law 94-171 Redistricting Data as provided by the U.S. Bureau of the Census and validated by the Legislative Counsel Bureau.

*Racial population data is based on self-identification. Respondents have the option of selecting one or more races.