



Clark County Senatorial Districts - 2010 Black or African American Alone Population

Senatorial District	Current Member Representing District	2010 Black or African American Alone*	Percent of 2010 Total
Clark 1	Lee	26,411	17.2%
Clark 2	Denis	10,343	10.7%
Clark 3	Wiener	12,971	13.1%
Clark 4	Horsford	32,554	26.3%
Clark 5**	Breeden & Roberson	13,856	5.5%
Clark 6	Copenig	8,444	8.4%
Clark 7**	Manendo & Parks	24,048	10.7%
Clark 8	Cegavske	8,345	8.1%
Clark 9	Halseth	28,555	8.1%
Clark 10	Kihuen	8,597	8.9%
Clark 11	Schneider	12,053	10.3%
Clark 12	Hardy	16,098	7.6%

Legend

Senatorial Districts

Black or African American Alone Population by Block Groups

1001 - 1987

551 - 1000

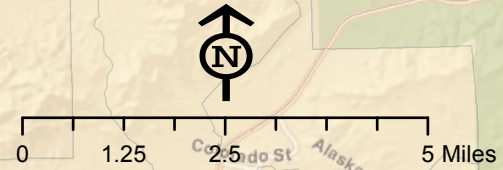
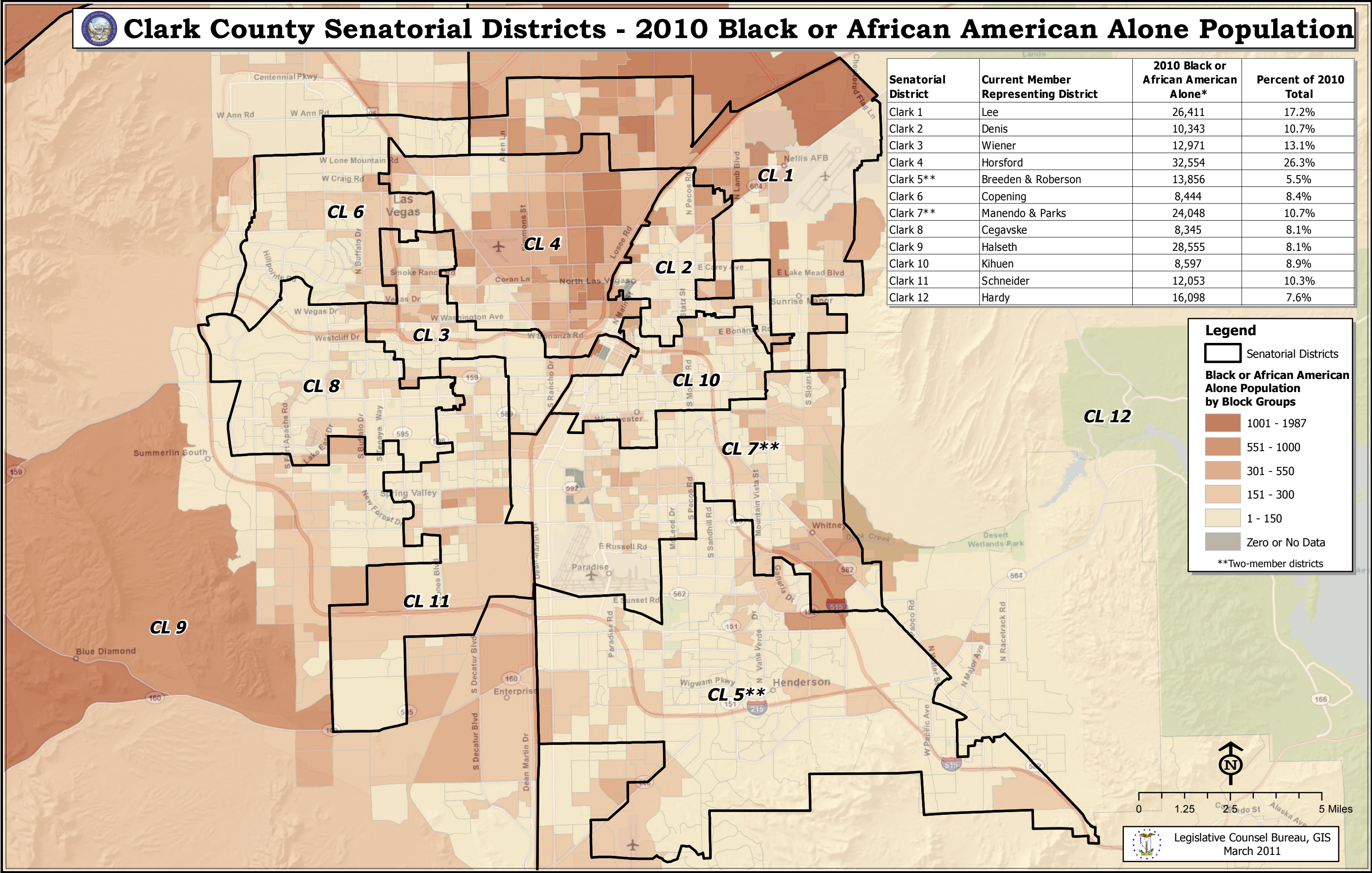
301 - 550

151 - 300

1 - 150

Zero or No Data

**Two-member districts



Legislative Counsel Bureau, GIS
March 2011

Note: The population database is derived from the 2010 Census Public Law 94-171 Redistricting Data as provided by the U.S. Bureau of the Census and validated by the Legislative Counsel Bureau.
*Racial population data is based on self-identification. Respondents have the option of selecting one or more races.