



Clark County Senatorial Districts - 2010 Hispanic or Latino (of any race) Population

Senatorial District	Current Member Representing District	2010 Hispanic or Latino (of any race)*	Percent of 2010 Total
Clark 1	Lee	58,878	38.3%
Clark 2	Denis	72,923	75.5%
Clark 3	Wiener	37,573	38.0%
Clark 4	Horsford	44,450	35.9%
Clark 5**	Breeden & Roberson	41,575	16.5%
Clark 6	Copening	14,392	14.3%
Clark 7**	Manendo & Parks	86,008	38.3%
Clark 8	Cegavske	16,571	16.0%
Clark 9	Halseth	55,113	15.6%
Clark 10	Kihuen	57,480	59.8%
Clark 11	Schneider	41,844	35.9%
Clark 12	Hardy	37,993	17.9%

Legend

Senatorial Districts

Hispanic or Latino (of any race) Population by Block Groups

1201 - 2205

901 - 1200

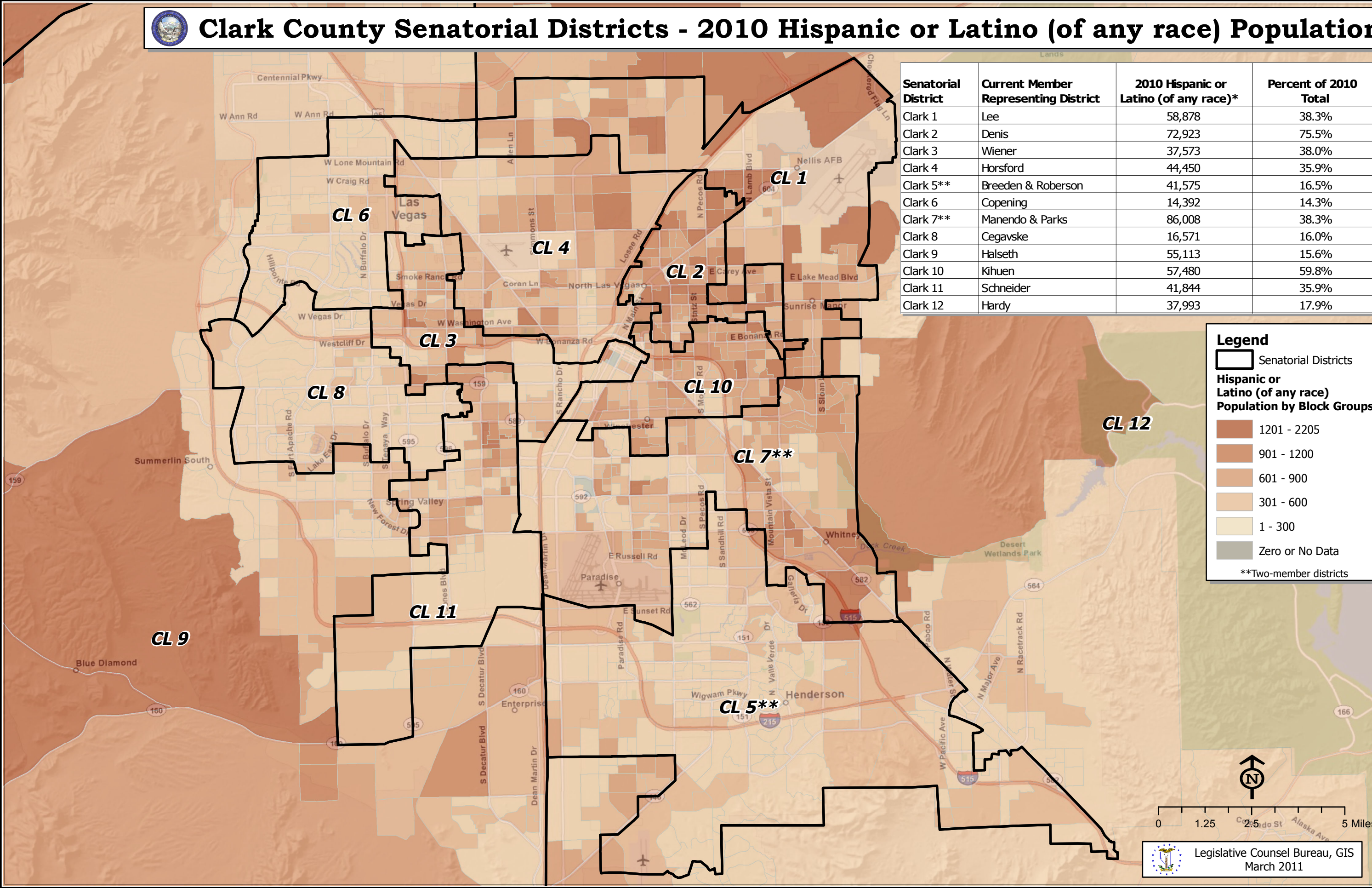
601 - 900


301 - 600

1 - 300

Zero or No Data

**Two-member districts



 Legislative Council Bureau, GIS
March 2011

Note: The population database is derived from the 2010 Census Public Law 94-171 Redistricting Data as provided by the U.S. Bureau of the Census and validated by the Legislative Council Bureau.
*Hispanic or Latino is reported by the Census Bureau as a language group, separately.
Racial population data is based on self-identification. Respondents have the option of selecting one or more races.